



ARTIFICIAL INTELLIGENCE



WHAT IS AI?

AI, or artificial intelligence, is a type of computer technology that can perform tasks that usually require human intelligence.

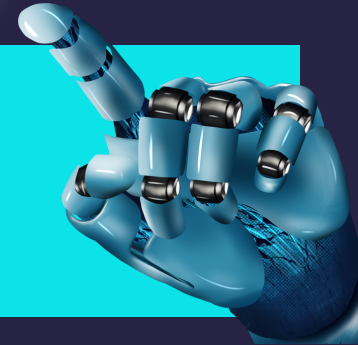
HOW DOES IT WORK?

AI learns by using data to recognize patterns and make predictions. It's like teaching a computer by showing it examples and letting it learn from its mistakes. Once trained, the AI can apply what it learned to new information. It can also grow its data set and continue to learn through the input of users.

HOW CAN IT BE USED?

Teachers can use AI to assist with:

1. Personalized learning
 - Adapting materials
2. Productivity and efficiency
 - Clerical tasks, feedback
3. Creating and supplementing content



HOW CAN WE KEEP OUR DATA SAFE?



Only use AI tools that are approved by your district, so that you can ensure they are compliant with Ed Law 2d. This ensures that any data this may be collected is handled in an appropriate manner.



Model best practices for AI use with students and teach them about proper use of tools. Show them how to use AI safely to enhance their work. Remind students of academic honesty and the importance of citations.



Teachers and students should not enter any Personally Identifiable Information (PII) into the AI. PII is any data that can be used to reasonably identify someone. For example, name, address, school, etc.



Don't use AI blindly. You should consider privacy, biases, and verify accuracy of information with other sources. Also consider that anything you enter into these models could be out there forever.

