



GAHANNA-JEFFERSON PUBLIC SCHOOLS

ENROLLMENT PROJECTIONS & HOUSING STUDY

January 2024



ENROLLMENT PROJECTIONS





ENROLLMENT PROJECTIONS

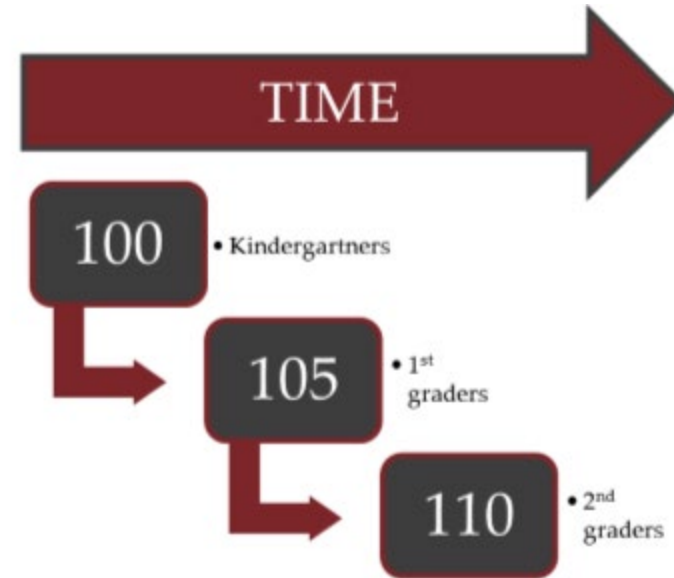
- 10-year enrollment projections by grade, district-wide
- 10-year enrollment projections by grade, by boundary
- Developed using the cohort survival method
 - 10 years of historical enrollment by grade, by year
 - Student data
 - Historical resident live birth counts
- Housing
 - Building permits & housing development information
- Census data



METHODOLOGY

COHORT SURVIVAL METHOD

- Uses **historical** live birth data and **historical** student enrollment to “age” (or progress) a known population (cohort) throughout the school grades
- Survival ratios analyzed
- Projection ratios developed





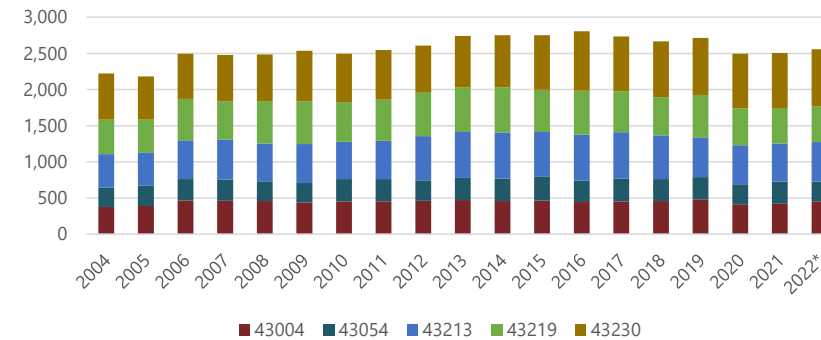
BIRTH DATA

- Birth data is used to project kindergarten enrollment 5 years later

**GAHANNA-JEFFERSON PUBLIC SCHOOLS ZIP CODES
RESIDENT LIVE BIRTH COUNTS**

Year	43004	43054	43062	43068	43213	43219	43230
2004	377	264	371	761	464	480	637
2005	388	285	344	772	450	460	600
2006	465	298	404	794	536	573	625
2007	460	294	400	850	555	523	647
2008	459	272	323	761	521	587	647
2009	439	267	387	785	541	589	701
2010	452	311	395	716	514	543	675
2011	455	305	361	733	532	569	686
2012	460	286	370	727	608	603	652
2013	471	307	349	767	637	617	708
2014	459	311	417	787	636	625	720
2015	464	329	320	780	621	582	755
2016	443	297	403	820	636	607	823
2017	452	318	352	868	639	567	758
2018	459	301	387	803	606	530	769
2019	481	307	396	845	543	596	787
2020	413	276	385	799	540	509	759
2021	422	305	359	832	527	492	759
2022*	453	275	409	837	545	497	788

**GAHANNA-JEFFERSON PUBLIC SCHOOLS ZIP
CODES
RESIDENT LIVE BIRTH COUNTS**



Source: Ohio Department of Health

*preliminary



HISTORICAL ENROLLMENT

Historical Enrollment - District-wide

Grade	2014-15	2015-16	2016-17	2017-18	2018-19	2019-20	2020-21	2021-22	2022-23	2023-24
K	538	512	535	555	558	531	518	561	564	577
1	511	559	551	536	567	590	536	572	564	597
2	541	513	564	556	538	568	594	581	564	582
3	552	559	547	593	560	561	564	618	599	599
4	531	567	588	544	576	552	561	581	619	592
5	527	535	580	590	548	620	541	598	574	615
6	530	549	554	579	574	558	636	576	611	604
7	573	557	567	566	563	579	571	649	581	624
8	564	581	579	590	550	601	598	575	646	607
9	655	606	608	576	589	612	633	662	619	680
10	577	626	575	591	541	583	608	624	600	608
11	563	567	632	560	546	522	583	583	570	604
12	559	579	567	643	521	566	538	586	583	606
23	8	13	0	8	11	10	21	16	23	19
GR	1	0	0	0	0	0	0	0	0	0
K - 12 Total	7,221	7,310	7,447	7,479	7,231	7,443	7,481	7,766	7,694	7,895
Grand Total	7,230	7,323	7,447	7,487	7,242	7,453	7,502	7,782	7,717	7,914

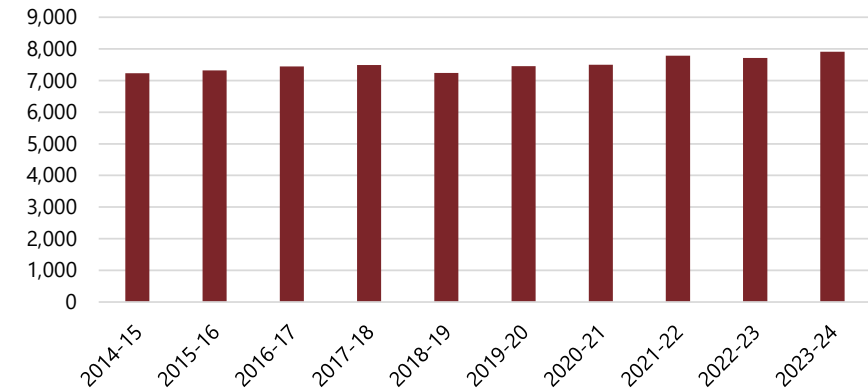
Source: Gahanna Jefferson Public Schools, October Count

Historical Enrollment - District-wide

Grade	2014-15	2015-16	2016-17	2017-18	2018-19	2019-20	2020-21	2021-22	2022-23	2023-24
K - 5	3,200	3,245	3,365	3,374	3,347	3,422	3,314	3,511	3,484	3,562
6 - 8	1,667	1,687	1,700	1,735	1,687	1,738	1,805	1,800	1,838	1,835
9 - 12	2,354	2,378	2,382	2,370	2,197	2,283	2,362	2,455	2,372	2,498
Other	9	13	0	8	11	10	21	16	23	19
K - 12 Total	7,221	7,310	7,447	7,479	7,231	7,443	7,481	7,766	7,694	7,895
Grand Total	7,230	7,323	7,447	7,487	7,242	7,453	7,502	7,782	7,717	7,914

Source: Gahanna Jefferson Public Schools, October Count

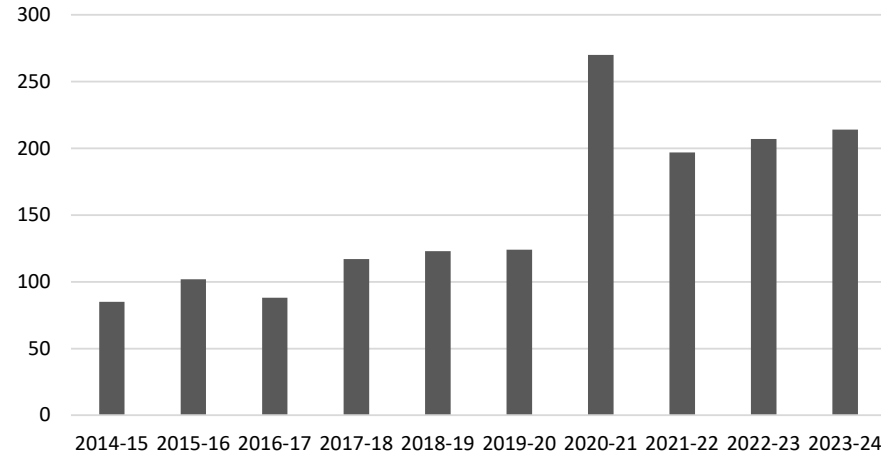
HISTORICAL ENROLLMENT - DISTRICT-WIDE



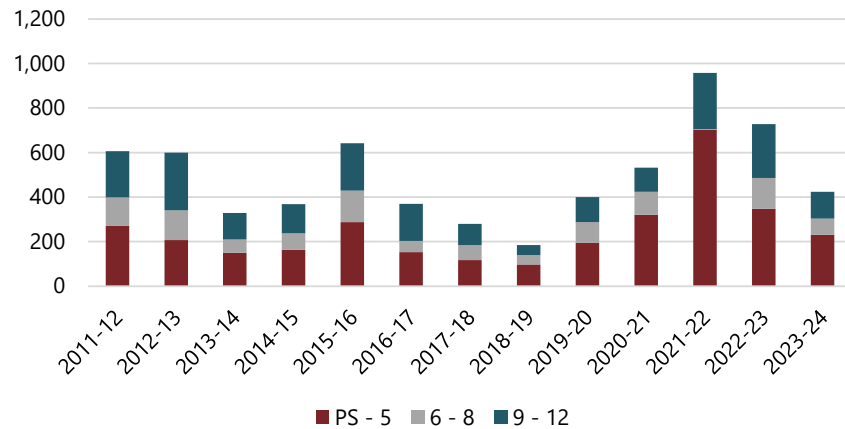


OTHER ENROLLMENT

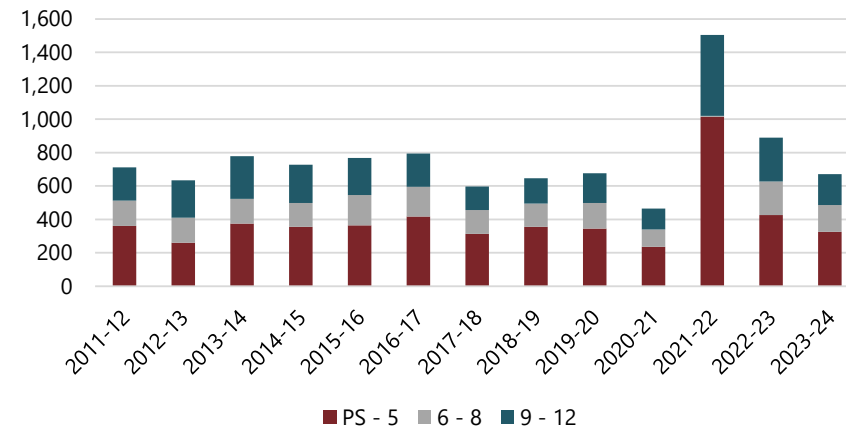
TOTAL HOME SCHOOL STUDENTS



TOTAL TRANSFERS-OUT



TOTAL TRANSFERS-IN





SURVIVAL RATIOS

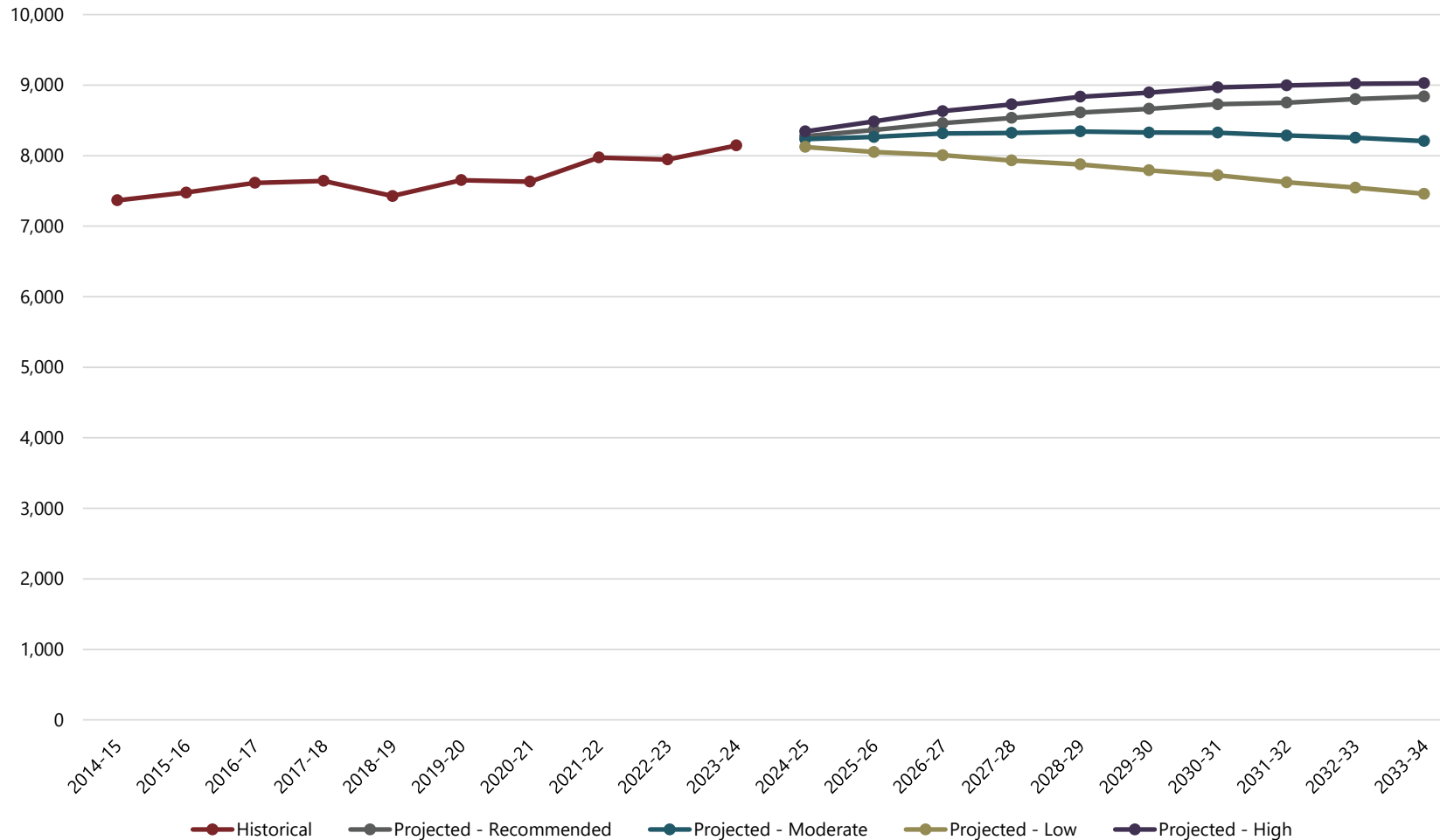
Survival Ratios - District-wide

from	to	Birth to K	K to 1	Birth to 1	1 to 2	2 to 3	3 to 4	4 to 5	5 to 6	6 to 7	7 to 8	8 to 9	9 to 10	10 to 11	11 to 12
2014-15	2015-16	20.52%	103.90%	22.03%	100.39%	103.33%	102.72%	100.75%	104.17%	105.09%	101.40%	107.45%	95.57%	98.27%	102.84%
2015-16	2016-17	21.01%	107.62%	22.08%	100.89%	106.63%	105.19%	102.29%	103.55%	103.28%	103.95%	104.65%	94.88%	100.96%	100.00%
2016-17	2017-18	21.27%	100.19%	21.04%	100.91%	105.14%	99.45%	100.34%	99.83%	102.17%	104.06%	99.48%	97.20%	97.39%	101.74%
2017-18	2018-19	20.36%	102.16%	21.73%	100.37%	100.72%	97.13%	100.74%	97.29%	97.24%	97.17%	99.83%	93.92%	92.39%	93.04%
2018-19	2019-20	19.30%	105.73%	21.53%	100.18%	104.28%	98.57%	107.64%	101.82%	100.87%	106.75%	111.27%	98.98%	96.49%	103.66%
2019-20	2020-21	18.83%	100.94%	19.48%	100.68%	99.30%	100.00%	98.01%	102.58%	102.33%	103.28%	105.32%	99.35%	100.00%	103.07%
2020-21	2021-22	19.99%	110.42%	20.79%	108.40%	104.04%	103.01%	106.60%	106.47%	102.04%	100.70%	110.70%	98.58%	95.89%	100.51%
2021-22	2022-23	20.63%	100.53%	20.10%	98.60%	103.10%	100.16%	98.80%	102.17%	100.87%	99.54%	107.65%	90.63%	91.35%	100.00%
2022-23	2023-24	21.65%	105.85%	21.84%	103.19%	106.21%	98.83%	99.35%	105.23%	102.13%	104.48%	105.26%	98.22%	100.67%	106.32%
mean simple all years		20.40%	104.15%	21.18%	101.51%	103.64%	100.56%	101.61%	102.57%	101.78%	102.37%	105.74%	96.37%	97.04%	101.24%
std. dev. simple all years		0.91%	3.53%	0.91%	2.84%	2.40%	2.56%	3.37%	2.78%	2.13%	2.93%	4.15%	2.88%	3.44%	3.69%
mean simple 5 years		20.08%	104.70%	20.75%	102.21%	103.38%	100.12%	102.08%	103.66%	101.65%	102.95%	108.04%	97.15%	96.88%	102.71%
std. dev. simple 5 years		1.11%	4.08%	0.98%	3.83%	2.55%	1.76%	4.64%	2.07%	0.72%	2.90%	2.86%	3.67%	3.74%	2.56%
mean simple 3 years		20.76%	105.60%	20.91%	103.40%	104.45%	100.67%	101.58%	104.62%	101.68%	101.57%	107.87%	95.81%	95.97%	102.28%
std. dev. simple 3 years		0.84%	4.95%	0.87%	4.90%	1.59%	2.14%	4.35%	2.21%	0.70%	2.58%	2.73%	4.49%	4.66%	3.51%
mean simple 2 years		21.14%	103.19%	20.97%	100.90%	104.65%	99.50%	99.07%	103.70%	101.50%	102.01%	106.46%	94.43%	96.01%	103.16%
std. dev. simple 2 years		0.72%	3.76%	1.23%	3.25%	2.20%	0.94%	0.40%	2.16%	0.89%	3.49%	1.69%	5.37%	6.59%	4.47%
mean weighted all years		20.59%	104.48%	21.00%	102.17%	103.97%	100.02%	100.99%	103.58%	101.60%	102.40%	106.62%	96.39%	96.93%	102.47%
std. dev. weighted all years		1.00%	3.68%	0.92%	3.34%	2.33%	1.88%	3.51%	2.46%	1.32%	2.73%	3.23%	3.51%	3.98%	3.59%
mean weighted 5 years		20.97%	104.76%	21.12%	102.42%	104.70%	99.74%	100.23%	104.35%	101.77%	102.75%	106.70%	96.41%	97.56%	103.75%
std. dev. weighted 5 years		0.96%	3.52%	0.94%	3.29%	2.12%	1.51%	3.08%	1.77%	0.64%	2.55%	2.22%	3.80%	4.44%	3.25%
mean weighted 3 years		21.41%	105.10%	21.49%	102.59%	105.58%	99.23%	99.54%	104.74%	101.90%	103.46%	105.90%	96.90%	98.84%	104.98%
std. dev. weighted 3 years		0.59%	2.80%	0.82%	2.57%	1.49%	1.12%	1.77%	1.48%	0.59%	2.39%	1.63%	3.54%	4.39%	3.13%
mean weighted 2 years		21.60%	105.60%	21.75%	102.97%	106.06%	98.89%	99.33%	105.08%	102.07%	104.24%	105.38%	97.86%	100.22%	106.02%
std. dev. weighted 2 years		0.31%	1.60%	0.52%	1.38%	0.94%	0.40%	0.17%	0.92%	0.38%	1.49%	0.72%	2.29%	2.81%	1.90%



HISTORICAL & PROJECTED ENROLLMENT

HISTORICAL & PROJECTED ENROLLMENT - GAHANNA JEFFERSON PUBLIC SCHOOLS





PROJECTED ENROLLMENT

Projected Enrollment - Recommended - District-wide

Grade	2024-25	2025-26	2026-27	2027-28	2028-29	2029-30	2030-31	2031-32	2032-33	2033-34
K	585	548	552	574	557	557	557	557	557	557
1	609	617	577	581	603	587	587	587	587	587
2	606	618	626	586	589	613	595	595	595	595
3	607	633	647	656	613	617	641	624	624	624
4	603	611	637	651	660	617	621	644	628	628
5	599	610	616	645	658	668	624	628	652	635
6	636	620	630	637	668	684	693	647	650	676
7	614	646	632	642	649	680	695	703	658	663
8	640	630	663	645	657	665	699	712	723	676
9	651	685	675	712	693	703	716	750	765	776
10	666	637	670	663	696	679	690	700	735	748
11	597	651	625	659	650	682	666	677	688	723
12	615	609	662	635	670	663	696	678	691	702
23	19	19	19	19	19	19	19	19	19	19
K - 12 Total	8,028	8,115	8,212	8,286	8,363	8,415	8,480	8,502	8,553	8,590
Grand Total	8,047	8,134	8,231	8,305	8,382	8,434	8,499	8,521	8,572	8,609

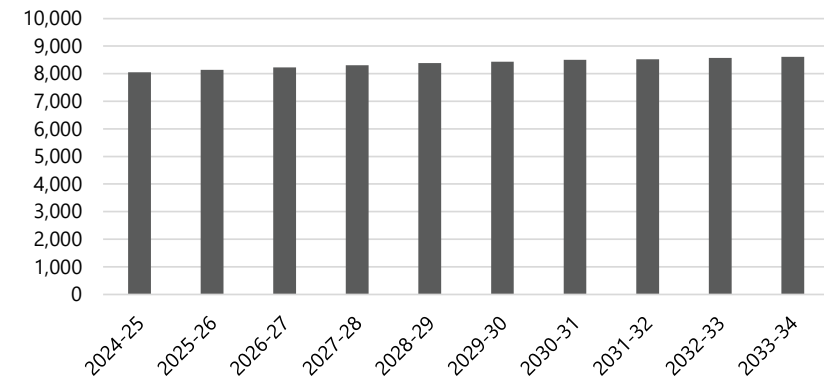
Source: Cooperative Strategies

Projected Enrollment - Recommended - District-wide

Grade	2024-25	2025-26	2026-27	2027-28	2028-29	2029-30	2030-31	2031-32	2032-33	2033-34
K - 5	3,609	3,637	3,655	3,693	3,680	3,659	3,625	3,635	3,643	3,626
6 - 8	1,890	1,896	1,925	1,924	1,974	2,029	2,087	2,062	2,031	2,015
9 - 12	2,529	2,582	2,632	2,669	2,709	2,727	2,768	2,805	2,879	2,949
Other	19	19	19	19	19	19	19	19	19	19
K - 12 Total	8,028	8,115	8,212	8,286	8,363	8,415	8,480	8,502	8,553	8,590
Grand Total	8,047	8,134	8,231	8,305	8,382	8,434	8,499	8,521	8,572	8,609

Source: Cooperative Strategies

PROJECTED ENROLLMENT - RECOMMENDED - DISTRICT-WIDE





PROJECTED ENROLLMENT

Projected Enrollment - High - District-wide

Grade	2024-25	2025-26	2026-27	2027-28	2028-29	2029-30	2030-31	2031-32	2032-33	2033-34
K	559	514	516	526	519	519	519	519	519	519
1	615	595	547	549	561	552	552	552	552	552
2	620	639	618	569	571	583	574	574	574	574
3	608	649	668	646	595	597	609	600	600	600
4	604	614	654	674	652	600	602	615	606	606
5	617	630	640	682	702	679	625	627	640	631
6	643	645	659	669	713	734	711	654	656	670
7	616	656	658	672	682	727	749	725	667	669
8	651	642	684	686	700	711	758	780	755	695
9	664	711	702	748	750	765	777	829	853	826
10	672	656	703	694	739	741	756	768	819	843
11	599	662	646	693	684	728	730	745	757	807
12	627	622	688	671	719	710	756	758	774	786
23	19	19	19	19	19	19	19	19	19	19
K - 12 Total	8,095	8,235	8,383	8,479	8,587	8,646	8,718	8,746	8,772	8,778
Grand Total	8,114	8,254	8,402	8,498	8,606	8,665	8,737	8,765	8,791	8,797

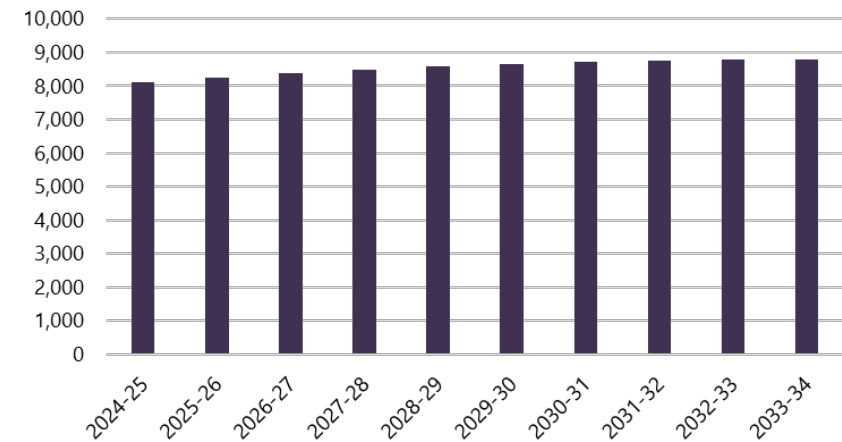
Source: Cooperative Strategies

Projected Enrollment - High - District-wide

Grade	2024-25	2025-26	2026-27	2027-28	2028-29	2029-30	2030-31	2031-32	2032-33	2033-34
K - 5	3,623	3,641	3,643	3,646	3,600	3,530	3,481	3,487	3,491	3,482
6 - 8	1,910	1,943	2,001	2,027	2,095	2,172	2,218	2,159	2,078	2,034
9 - 12	2,562	2,651	2,739	2,806	2,892	2,944	3,019	3,100	3,203	3,262
Other	19	19	19	19	19	19	19	19	19	19
K - 12 Total	8,095	8,235	8,383	8,479	8,587	8,646	8,718	8,746	8,772	8,778
Grand Total	8,114	8,254	8,402	8,498	8,606	8,665	8,737	8,765	8,791	8,797

Source: Cooperative Strategies

PROJECTED ENROLLMENT - HIGH - DISTRICT-WIDE





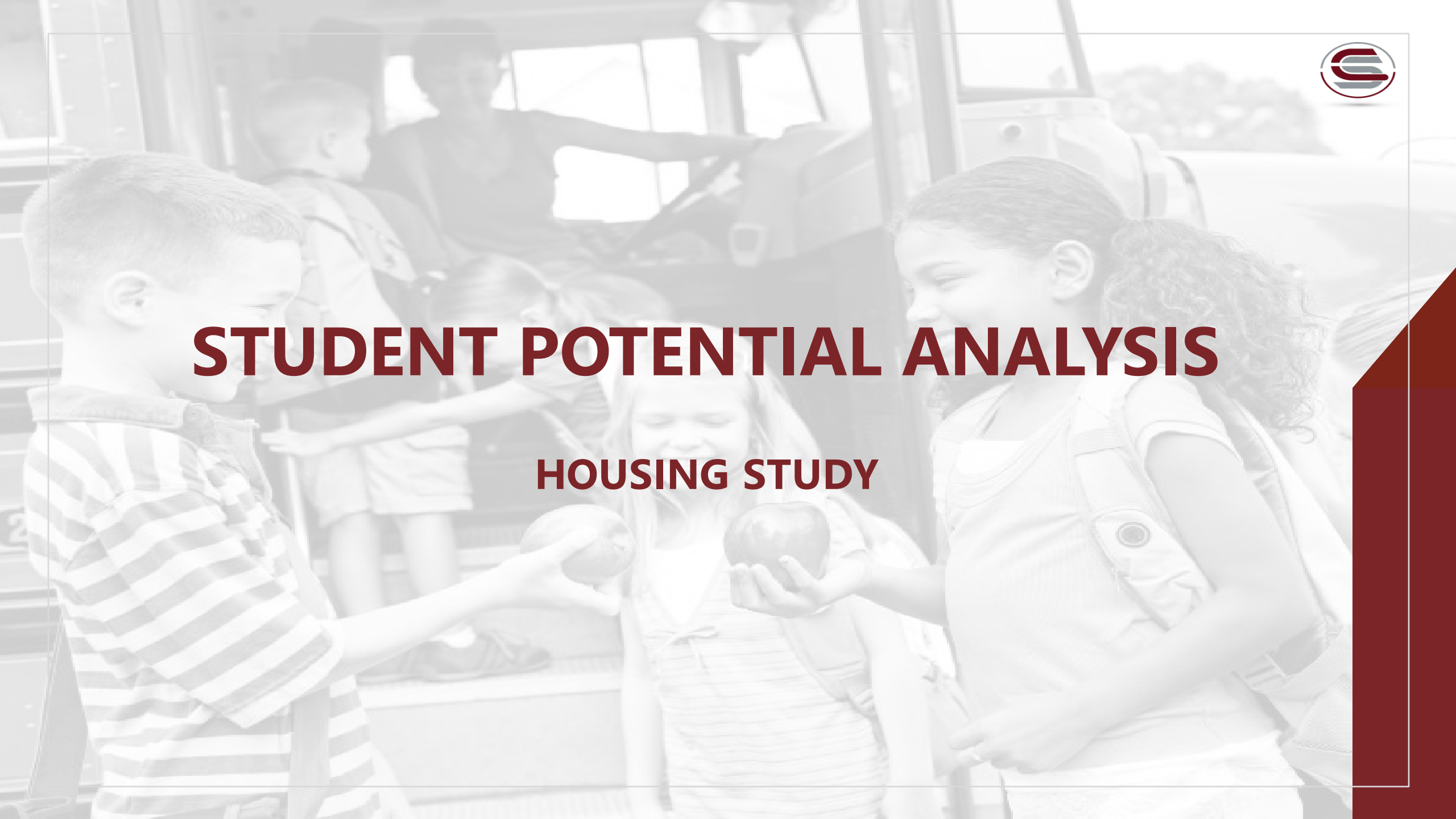
FACTORS TO CONSIDER

- It is important to continue to monitor enrollment trends and live birth trends as these factors impact future enrollment
- The following factors can also cause significant change in projected student enrollment
 - Boundary adjustments
 - New school openings
 - School closures
 - Changes / additions in program offerings
 - Preschool programs
 - Change in grade configuration
 - Interest rates / unemployment shifts
 - Intra- and inter-District transfer
 - Magnet / charter / private school opening or closure
 - Zoning changes
 - Annexations
 - Unplanned new housing activity
 - Planned, but not built, housing
 - School voucher programs
 - Pandemics



STUDENT POTENTIAL ANALYSIS

HOUSING STUDY



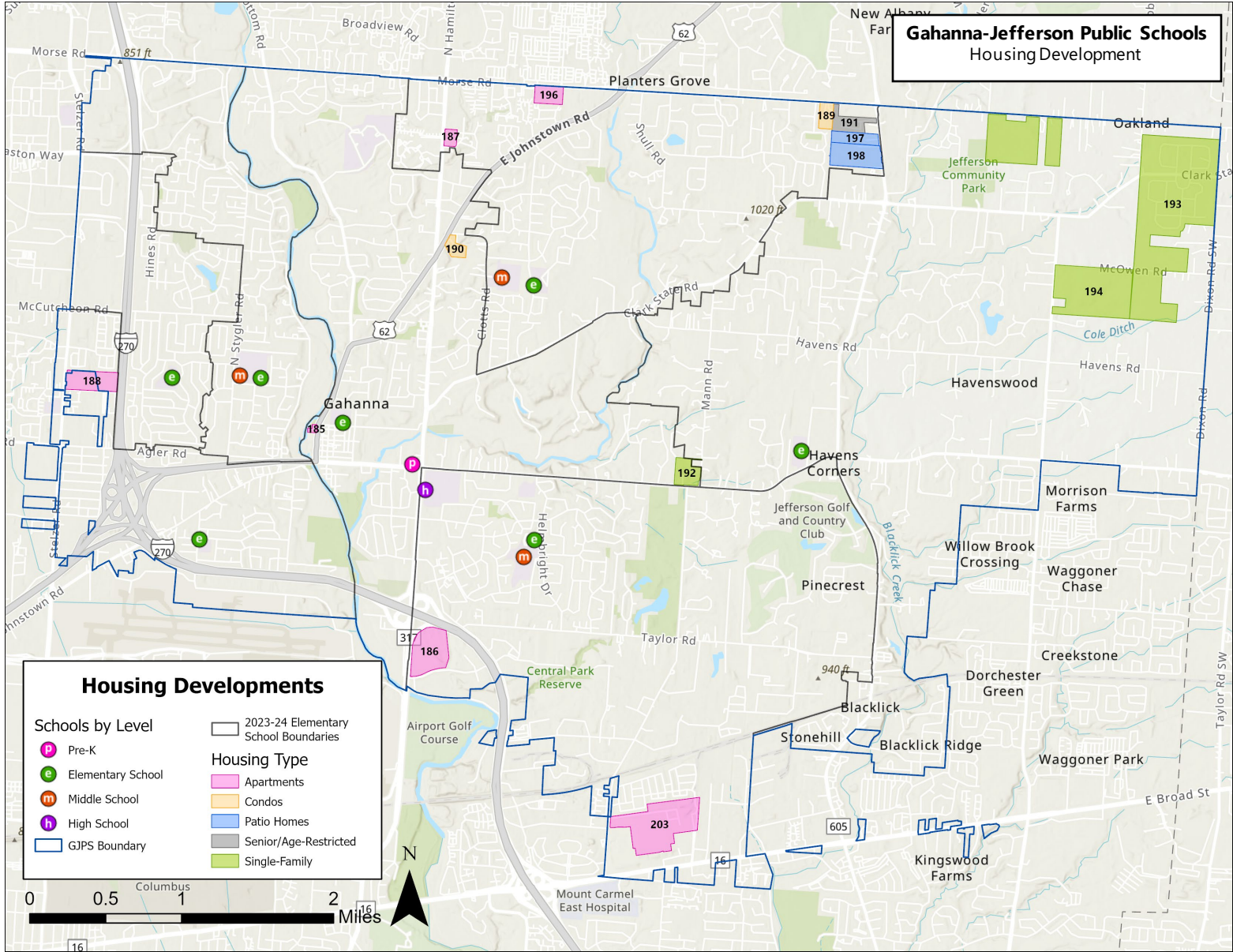


CURRENT STUDENT YIELDS

Existing Housing Type	23-24 Units	23-24 Students	23-24 Yield	21-22 Yield
Apartments	4,831	993	0.21	0.22
Attached Condos	1,985	384	0.19	0.21
Detached Condos	40	5	0.13	0.09
Condominium Total	2,025	389	0.19	0.20
Subdivided Single-Family	12,847	5,872	0.46	0.46

Table shows housing units from fully completed subdivisions/complexes

STUDENT POTENTIAL





PLANNED DEVELOPMENT

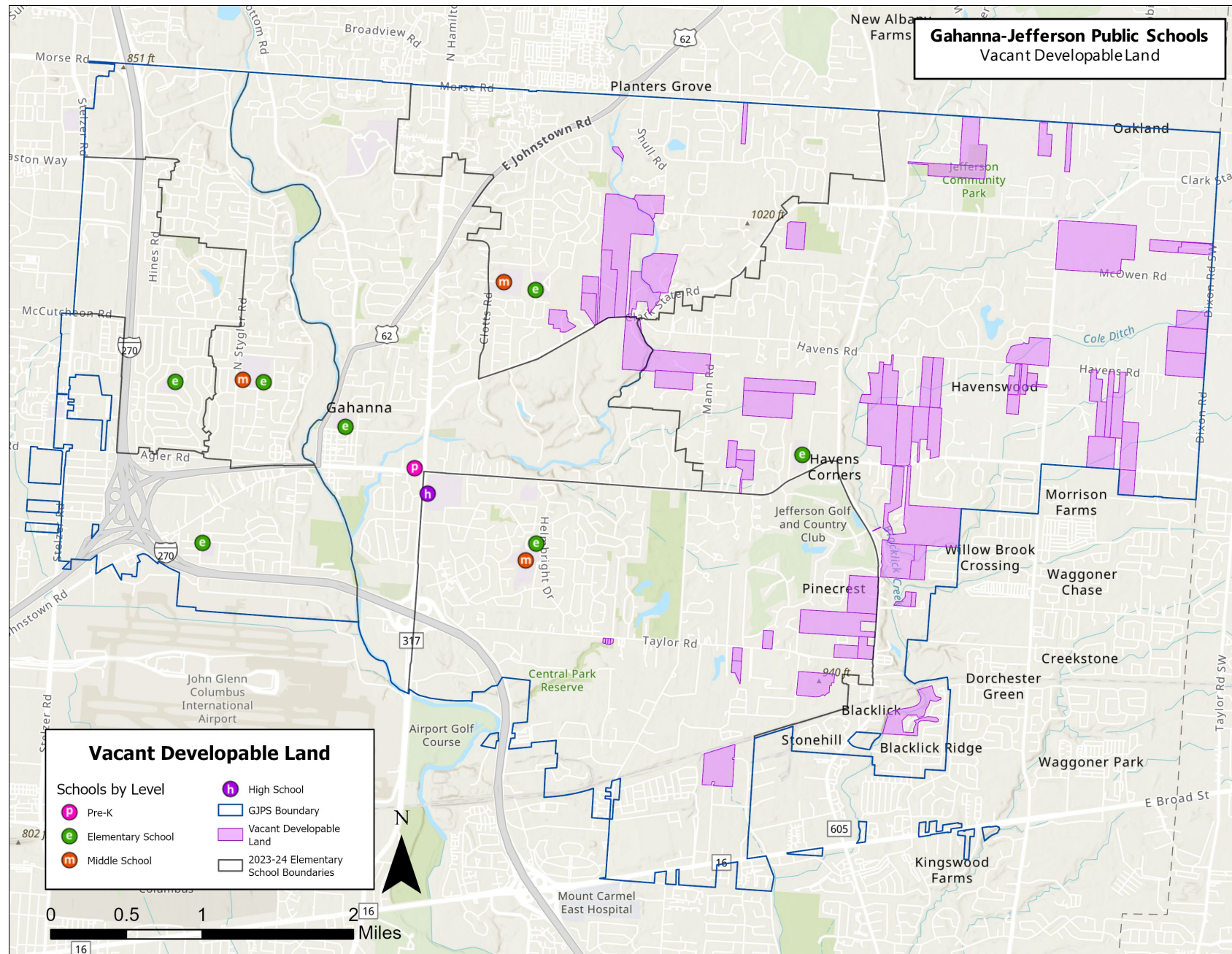
Development Information			Boundary		Units at Build Out	Maximum Enrollment	Mature Enrollment
Name	Housing Type	Status	Elementary	Middle			
Carpenter Rd & Mill St.	Apartments	Planned	Jefferson ES	East MS	74	15	15
Crescent at Central Park (pre. Crescent Woods)	Apartments	Planned	Lincoln ES	South MS	300	62	62
Hamilton Town Center	Apartments	Prospective	High Point ES	East MS	150	31	31
Walden Lakes	Apartments	Construction/Active	Goshen Lane ES	West MS	360	74	74
Elliot Parc	Apartments	Approved	High Point ES	East MS	251	52	52
Morse Road Townhomes (Pulte)	Condominiums	Construction	High Point ES	East MS	62	12	12
Pinnacle Pointe Villas	Condominiums	Construction/Active	Jefferson ES	East MS	36	7	7
Courtyards at Morse Road	Patio Homes (Condos)	Approved	High Point ES	East MS	39	7	7
Woodland Preserve	Patio Homes (Condos)	Approved	High Point ES	East MS	58	11	11
Courtyards at Morse Circle	Senior (Age-Restricted)	Construction/Active	High Point ES	East MS	93	0	0
Briarfield	Single-Family	Construction	Jefferson ES	East MS	40	37	16
Farms at Jefferson	Single-Family	Construction/Active	Blacklick ES	South MS	358	329	143
Jefferson Manor	Single-Family	Construction	Blacklick ES	South MS	38	35	15
Lucent Technologies Site	Apartments	Prospective	Lincoln ES	South MS	240	49	49

1,285 acres of developable land

Jefferson Township:
1,224ac

City of Gahanna:
31ac

City of Columbus:
30ac



100 units/year

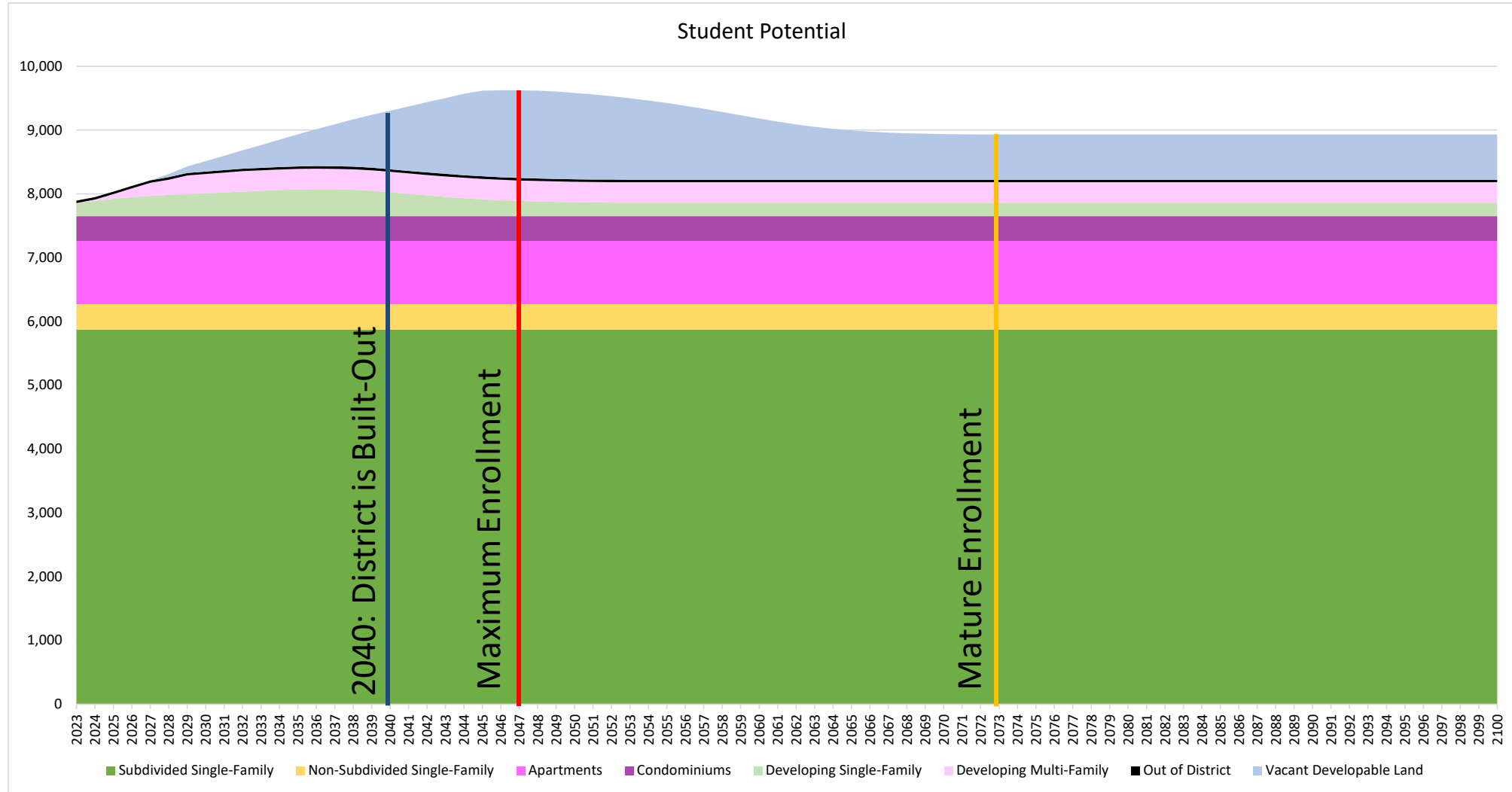
1.3 units/acre

9,624 = max enrollment (2047)

8,929 = mature enrollment (2073)



STUDENT POTENTIAL





IMPACT



Student Counts

Grade Band	Capacity	2023-24	High Enrollment Projection					100 units/year Student Potential					
			2024-25	2025-26	2026-27	2027-28	2028-29	2030-31	2035-36	2040-41	2045-46	2050-51	2055-56
K-5	4,250	3,562	3,623	3,641	3,643	3,646	3,600	3,929	4,123	4,294	4,438	4,423	4,350
6-8	2,300	1,835	1,910	1,943	2,001	2,027	2,095	1,965	2,061	2,147	2,219	2,212	2,175
9-12	3,000	2,498	2,562	2,651	2,739	2,806	2,892	2,619	2,749	2,862	2,959	2,949	2,900
TOTAL	9,550	7,895	8,095	8,235	8,383	8,479	8,587	8,513	8,933	9,303	9,616	9,584	9,425

School Utilization

Grade Band	Capacity	2023-24	High Enrollment Projection					100 units/year Student Potential					
			2024-25	2025-26	2026-27	2027-28	2028-29	2030-31	2035-36	2040-41	2045-46	2050-51	2055-56
K-5	4,250	84%	85%	86%	86%	86%	85%	92%	97%	101%	104%	104%	102%
6-8	2,300	80%	83%	84%	87%	88%	91%	85%	90%	93%	96%	96%	95%
9-12	3,000	83%	85%	88%	91%	94%	96%	87%	92%	95%	99%	98%	97%
TOTAL	9,550	83%	85%	86%	88%	89%	90%	89%	94%	97%	101%	100%	99%

150 units/year

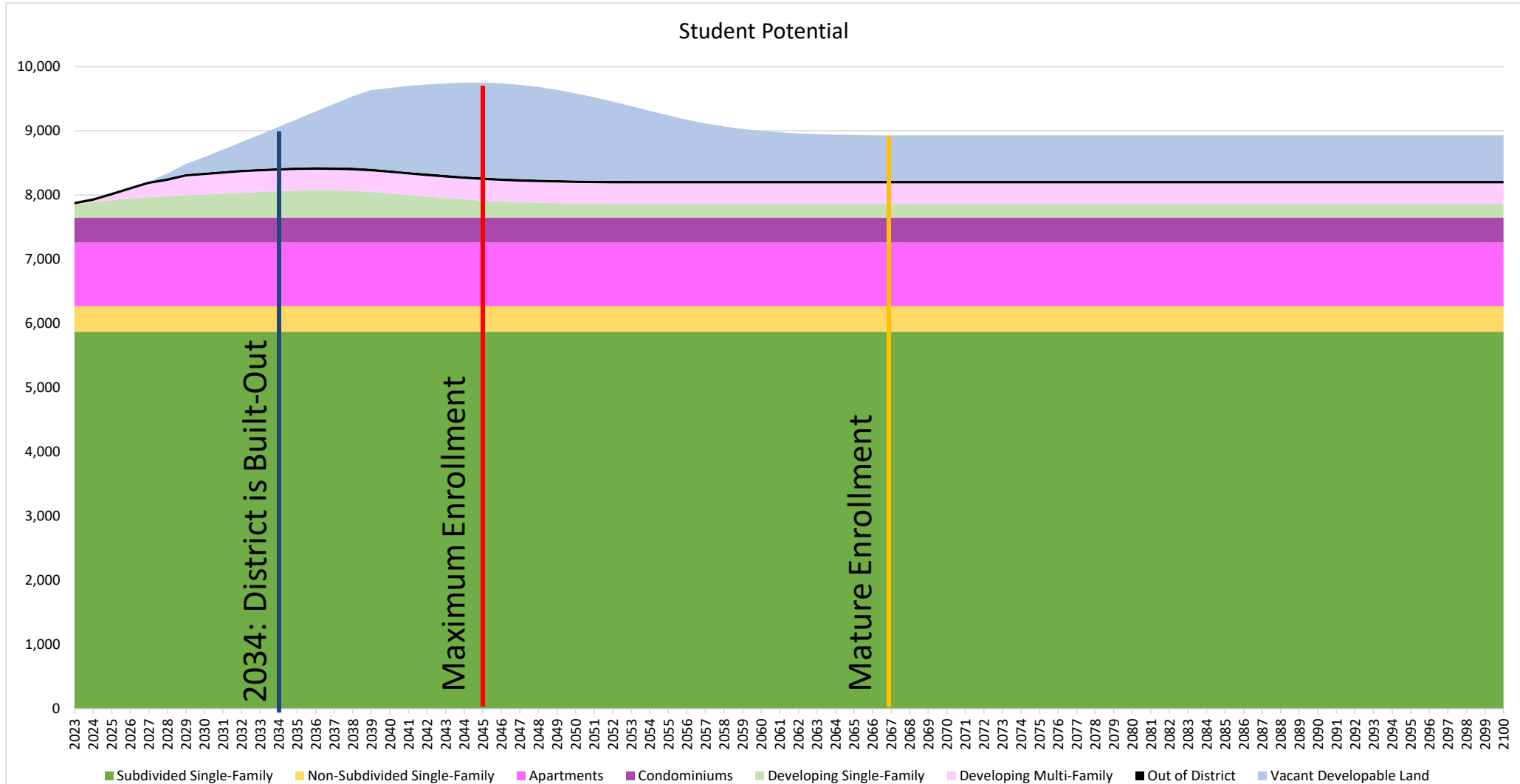
1.3 units/acre

9,753 = max enrollment (2045)

8,929 = mature enrollment (2067)



STUDENT POTENTIAL





IMPACT



Student Counts

Grade Band	Capacity	2023-24	High Enrollment Projection					150 units/year Student Potential					
			2024-25	2025-26	2026-27	2027-28	2028-29	2030-31	2035-36	2040-41	2045-46	2050-51	2055-56
K-5	4,250	3,562	3,623	3,641	3,643	3,646	3,600	3,966	4,239	4,463	4,501	4,425	4,266
6-8	2,300	1,835	1,910	1,943	2,001	2,027	2,095	1,983	2,119	2,232	2,251	2,212	2,133
9-12	3,000	2,498	2,562	2,651	2,739	2,806	2,892	2,644	2,826	2,975	3,001	2,950	2,844
TOTAL	9,550	7,895	8,095	8,235	8,383	8,479	8,587	8,594	9,184	9,670	9,753	9,587	9,243

School Utilization

Grade Band	Capacity	2023-24	High Enrollment Projection					150 units/year Student Potential					
			2024-25	2025-26	2026-27	2027-28	2028-29	2030-31	2035-36	2040-41	2045-46	2050-51	2055-56
K-5	4,250	84%	85%	86%	86%	86%	85%	93%	100%	105%	106%	104%	100%
6-8	2,300	80%	83%	84%	87%	88%	91%	86%	92%	97%	98%	96%	93%
9-12	3,000	83%	85%	88%	91%	94%	96%	88%	94%	99%	100%	98%	95%
TOTAL	9,550	83%	85%	86%	88%	89%	90%	90%	96%	101%	102%	100%	97%



QUESTIONS