



# Eastern Suffolk BOCES by the **NUMBERS**

Eastern Suffolk BOCES is an inclusive educational cooperative of 51 Long Island school districts, providing regional leadership and advocacy, direct instruction, management, and support through quality, cost-effective instructional programs, and shared services. These programs and services maximize inclusive educational and career opportunities and equitable access for Long Island's diverse community promoting lifelong learning for both children and adults, to achieve excellence and enhance the operational effectiveness of the region.



## Engine for **Economic Growth**

**1,752**

adult students improved their job prospects by enrolling in workforce development courses

**828**

businesses are on our CTE advisory council

**50**

career education courses for high school students are offered

**14%**

of CTE graduates entered the workforce directly after graduation

**6,115**

computing devices were purchased for component school districts, including 426 desktop computers, 3,845 laptop computers, 638 tablets, and 1,206 mobile hot spots

**2,206**

school staff attended 46 professional development workshops offered



## Facilitator of **Collaboration & Efficiency**

**38**

colleges and universities have 149 articulation agreements with ESBOCES

**11**

school districts participate in BOCES coordinated health benefits consortium

**190**

school districts received support from the Regional Information Center

**60**

school districts participate in the ESBOCES Regional Transportation Program

**171**

school districts receive support from ESBOCES Educational Support Services

**112**

school districts receive support from ESBOCES Management Services

**\$8.9**

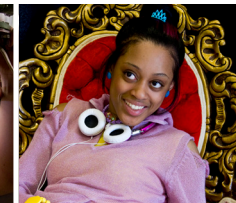
million is estimated to have been saved through 63 cooperative bids in 2023

**Educational Services that Transform Lives**

[www.esboces.org](http://www.esboces.org)



# Eastern Suffolk BOCES by the **NUMBERS**



## Trusted Leader in Education

**96**

students earned at least three college credits through dual enrollment agreements

**2,183**

people are employed by ESBOCES

**83%**

of CTE graduates went on to college after graduation

**59**

Cooperative Service Agreements (CoSers) are available to 51 component districts, 18 districts in Western Suffolk, and 139 other districts/BOCES throughout the state

**1,221**

CTE students graduated with a high school diploma or equivalent in 2023

**4,694**

students are enrolled in instructional programs operated by ESBOCES



## Educator for All Ages and Abilities

**2,845**

high school students developed college and career ready skills

**1,823**

students' needs were supported in special education classrooms

**1,891**

adult students improved their language comprehension, speaking, and literacy skills through English as a Second Language (ESL) programs

**200**

CTE students completed a program with a technical endorsement. 95 of them are students with disabilities.

**26**

students' academic, social, and emotional needs were met in alternative education programs

**335**

adult students broadened their employment options by taking High School Equivalency (HSE) courses

**Educational Support Services** offers innovative and high-quality programs and services designed to assist school districts in enhancing instruction with the goal of improving student outcomes.

The **Regional Information Center** provides school districts with a wide array of technology tools and solutions that provide school districts with the most cost-effective and efficient technologies available.

The **Career, Technical, and Adult Education Program** provides high school and adult students with technical and academic skills for future employment or a path to college or other post-secondary programs.

The **Special Education Program** offers a broad spectrum of services and programs to the region's most severely impaired, disabled, and "at-risk" students.

The **Human Resources Department** provides a range of services that promote staff development, recruitment, communications, and research that capitalize on the diverse backgrounds and experiences of school staff.

**Administrative Services** promotes cost effectiveness in school district management that allows school districts to utilize their limited resources for instructional purposes.

### Eastern Suffolk BOCES Board

**President**  
Lisa Israel

**Vice President**  
William K. Miller

#### Members

Arlene Barresi  
Linda S. Goldsmith  
William Hsiang

Susan Lipman  
Joseph LoSchiavo  
Anne Mackesey

James F. McKenna  
Brian O. Mealy  
Catherine M. Romano

Robert P. Sweeney  
John Wyche

**Interim District Superintendent**  
April E. Poprilo

**Chief Operating Officer**  
David Wicks

Eastern Suffolk BOCES does not discriminate against any employee, student, applicant for employment, or candidate for enrollment on the basis of sex, gender, race, color, religion or creed, age, weight, national origin, marital status, disability, sexual orientation, gender identity or expression, transgender status, military or veteran status, domestic violence victim status, genetic predisposition or carrier status, or any other classification protected by Federal, State, or local law. ESBOCES also provides equal access to the Boy Scouts and other designated youth groups. Inquiries regarding the implementation of the applicable laws should be directed to either of the ES-BOCES Civil Rights Compliance Officers at [ComplianceOfficers@esboces.org](mailto:ComplianceOfficers@esboces.org): the Assistant Superintendent for Human Resources, 631-687-3029, or the Associate Superintendent for Educational Services, 631-687-3056, 201 Sunrise Highway, Patchogue, NY 11772. Inquiries may also be addressed to the Office for Civil Rights at the US Department of Education, 32 Old Slip, 26th Floor, New York, NY 10005, 646-428-3800, [OCR.NewYork@ed.gov](mailto:OCR.NewYork@ed.gov).