



Westport Public Schools

10-Year Enrollment Projections Update

November 16, 2023



Contents

- Projections Review
- Enrollment Drivers – Demographics and Housing
- Student Enrollment Trends & Analysis
- Enrollment Projection Update
- Appendices



Projections Comparison

High Comparison	K	1	2	3	4	5	6	7	8	9	10	11	12	K to 5	6 to 8	9 to 12	Total
2023-24 Actual	392	395	428	413	368	398	421	386	426	391	409	406	423	2,394	1,233	1,629	5,256
2023-24 Projected (High)	394	421	444	413	387	403	444	384	438	379	415	407	420	2,462	1,266	1,621	5,349
Deviation	(2)	(26)	(16)	0	(19)	(5)	(23)	2	(12)	12	(6)	(1)	3	(68)	(33)	8	(93)
% Diff.	-0.5%	-6.2%	-3.6%	0.0%	-4.9%	-1.2%	-5.2%	0.5%	-2.7%	3.2%	-1.4%	-0.2%	0.7%	-2.8%	-2.6%	0.5%	-1.7%
Medium Comparison	K	1	2	3	4	5	6	7	8	9	10	11	12	K to 5	6 to 8	9 to 12	Total
2023-24 Actual	392	395	428	413	368	398	421	386	426	391	409	406	423	2,394	1,233	1,629	5,256
2023-24 Projected (Med)	390	419	443	412	386	402	443	383	436	378	414	405	419	2,452	1,262	1,616	5,330
Deviation	2	(24)	(15)	1	(18)	(4)	(22)	3	(10)	13	(5)	1	4	(58)	(29)	13	(74)
% Diff.	0.5%	-5.7%	-3.4%	0.2%	-4.7%	-1.0%	-5.0%	0.8%	-2.3%	3.4%	-1.2%	0.2%	1.0%	-2.4%	-2.3%	0.8%	-1.4%
Low Comparison	K	1	2	3	4	5	6	7	8	9	10	11	12	K to 5	6 to 8	9 to 12	Total
2023-24 Actual	392	395	428	413	368	398	421	386	426	391	409	406	423	2,394	1,233	1,629	5,256
2023-24 Projected (Low)	387	415	439	408	382	398	438	380	432	374	410	401	414	2,429	1,250	1,599	5,278
Deviation	5	(20)	(11)	5	(14)	0	(17)	6	(6)	17	(1)	5	9	(35)	(17)	30	(22)
% Diff.	1.3%	-4.8%	-2.5%	1.2%	-3.7%	0.0%	-3.9%	1.6%	-1.4%	4.5%	-0.2%	1.2%	2.2%	-1.4%	-1.4%	1.9%	-0.4%

- Actual 2023-24 enrollment is lower than all three projections models.
- Greatest deviation at the elementary level (-58), particularly driven by lower in-migration in 1st, 2nd, and 4th grade.
 - Kindergarten enrollment projection under the medium model performed well (within 2 students).
- Middle school enrollment also lower than all three projections models, aligning most closely with the low model.
- High school enrollment exceeds projections, with high model performing the best.



Projections Comparison by Elementary

- Kindergarten enrollment higher than projected Coleytown (+14), Green's Farms (+6), and King's Highway (+6). Kindergarten 12 students lower than projected at both Long Lots and Saugatuck.
- Greatest K-5 deviation at Long Lots (-29) and Saugatuck (-25)
- Coleytown, Green's Farms, Long Lots, and King's Highway within 7 students overall of projections

School	Enroll	K	1	2	3	4	5	K-5
Coleytown	Actual	91	72	79	89	76	80	487
	Projected	77	79	90	82	78	83	489
	Difference	14	(7)	(11)	7	(2)	(3)	(2)
Green's Farms	Actual	81	78	85	85	68	75	472
	Projected	75	78	87	88	77	74	479
	Difference	6	0	(2)	(3)	(9)	1	(7)
King's Highway	Actual	81	65	83	74	72	88	463
	Projected	75	66	83	75	71	88	458
	Difference	6	(1)	0	(1)	1	0	5
Long Lots	Actual	85	111	109	93	88	88	574
	Projected	97	113	111	97	96	89	603
	Difference	(12)	(2)	(2)	(4)	(8)	(1)	(29)
Saugatuck	Actual	54	69	72	72	64	67	398
	Projected	66	83	72	70	64	68	423
	Difference	(12)	(14)	0	2	0	(1)	(25)
Total All Schools	Actual	392	395	428	413	368	398	2,394
	Projected	390	419	443	412	386	402	2,452
	Difference	2	(24)	(15)	1	(18)	(4)	(58)
% Difference		0.5%	-5.7%	-3.4%	0.2%	-4.7%	-1.0%	-2.4%



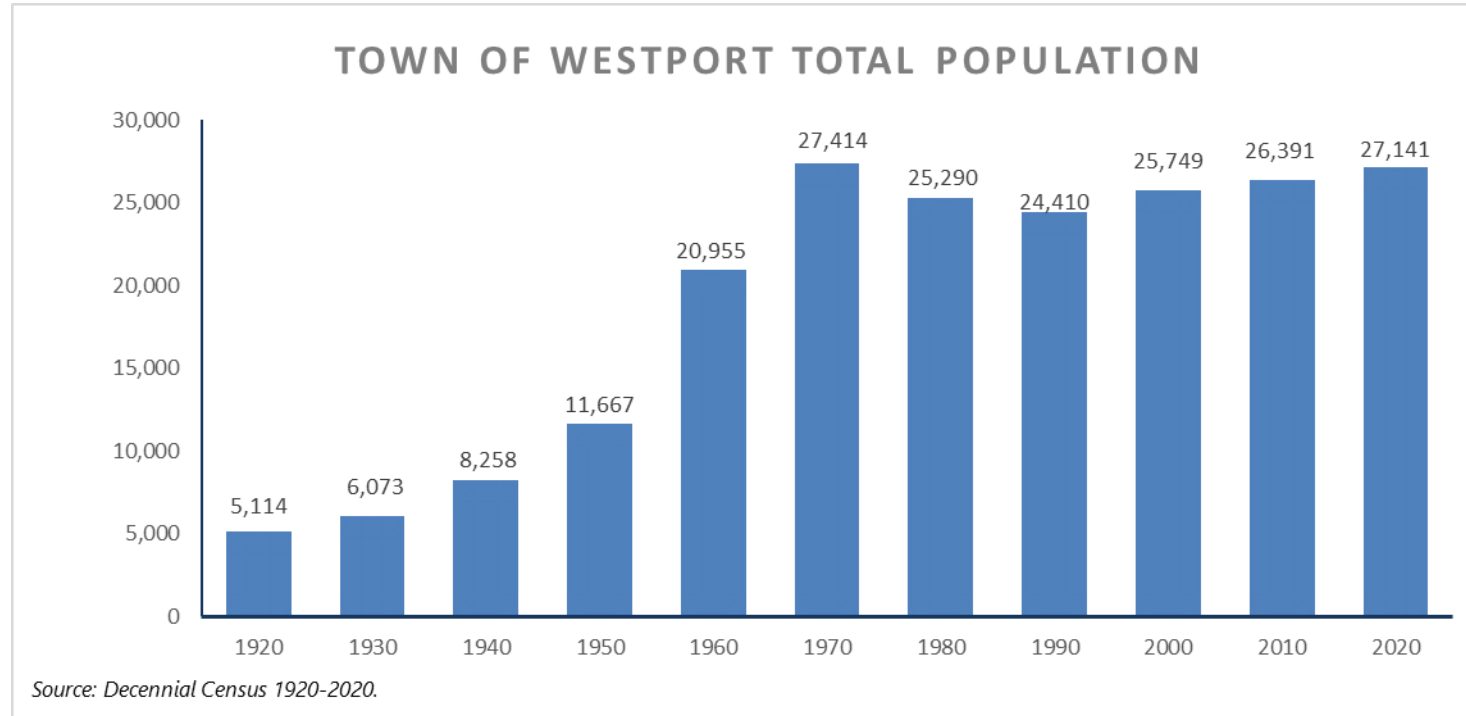
Enrollment Drivers

Enrollment Drivers



Westport's Population

- According to 2020 Decennial Census, Westport's total population grew by 750 or 2.8% over the last decade.
- Impacts from the pandemic over the last 40 months not captured in 2020 census counts
- CTDPH Population estimates for 2022 estimate Westport's population is 27,427, a growth of about 280 residents or 1% since 2020.

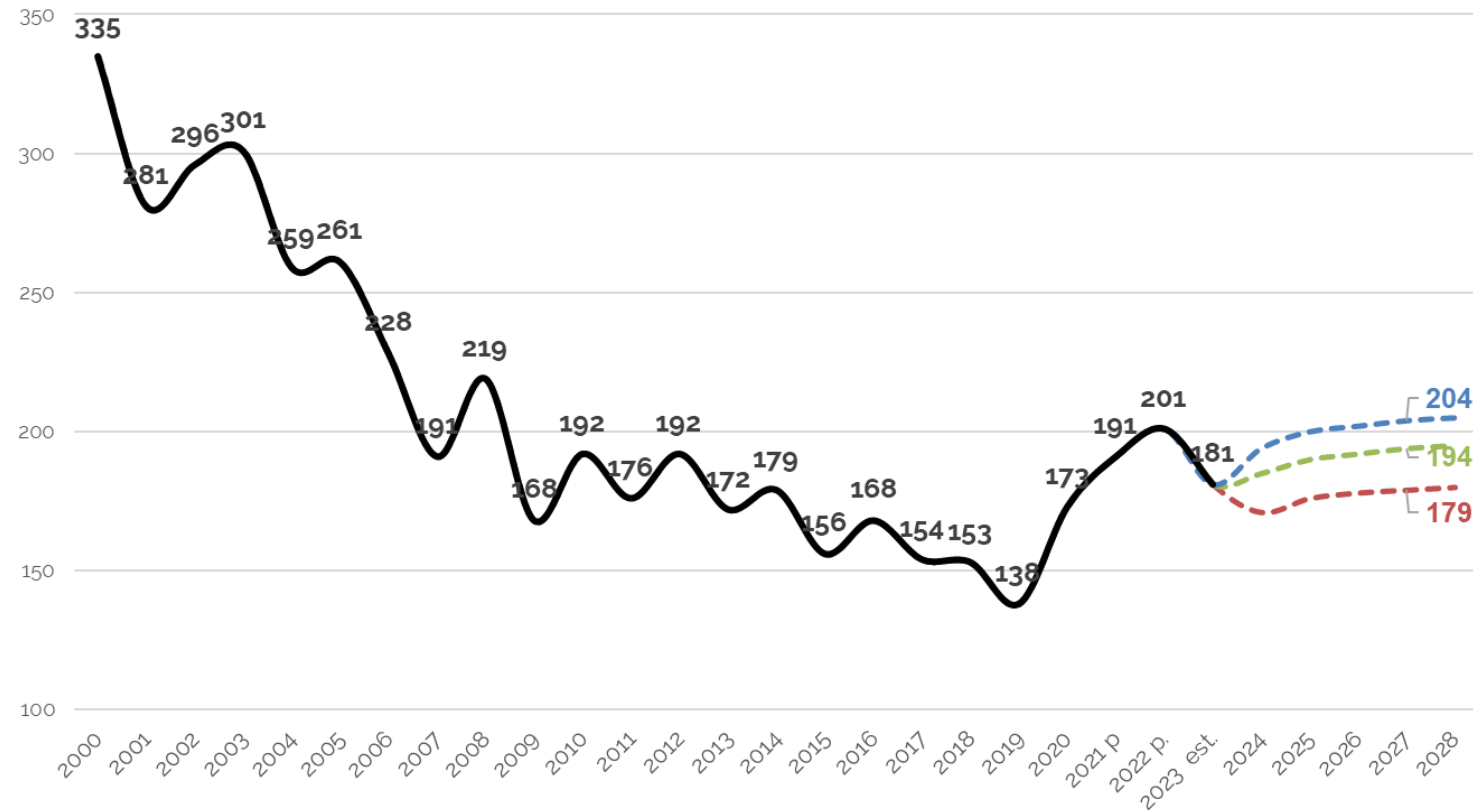




Reported Birth & Projections

- Year-to-date births through September are below prior two years but still above pre-pandemic average.
- Recent uptick in births not captured in demographic-based models.
- Beginning in 2019, births transitioned from calendar year to September-August to align with new CT entry age requirements (2024-25 Kindergarten class).
- Mathematical models assume different growth factors for high, medium, and low birth projections
- All three models yield a continuation of the elevated births for 2023-27.
 - Low model: avg. 177 (171-180)
 - Medium model: avg. 191 (185-195)
 - High model: avg. 201 (194-205)

Westport Actual and Projected Births: 2000 to 2028*



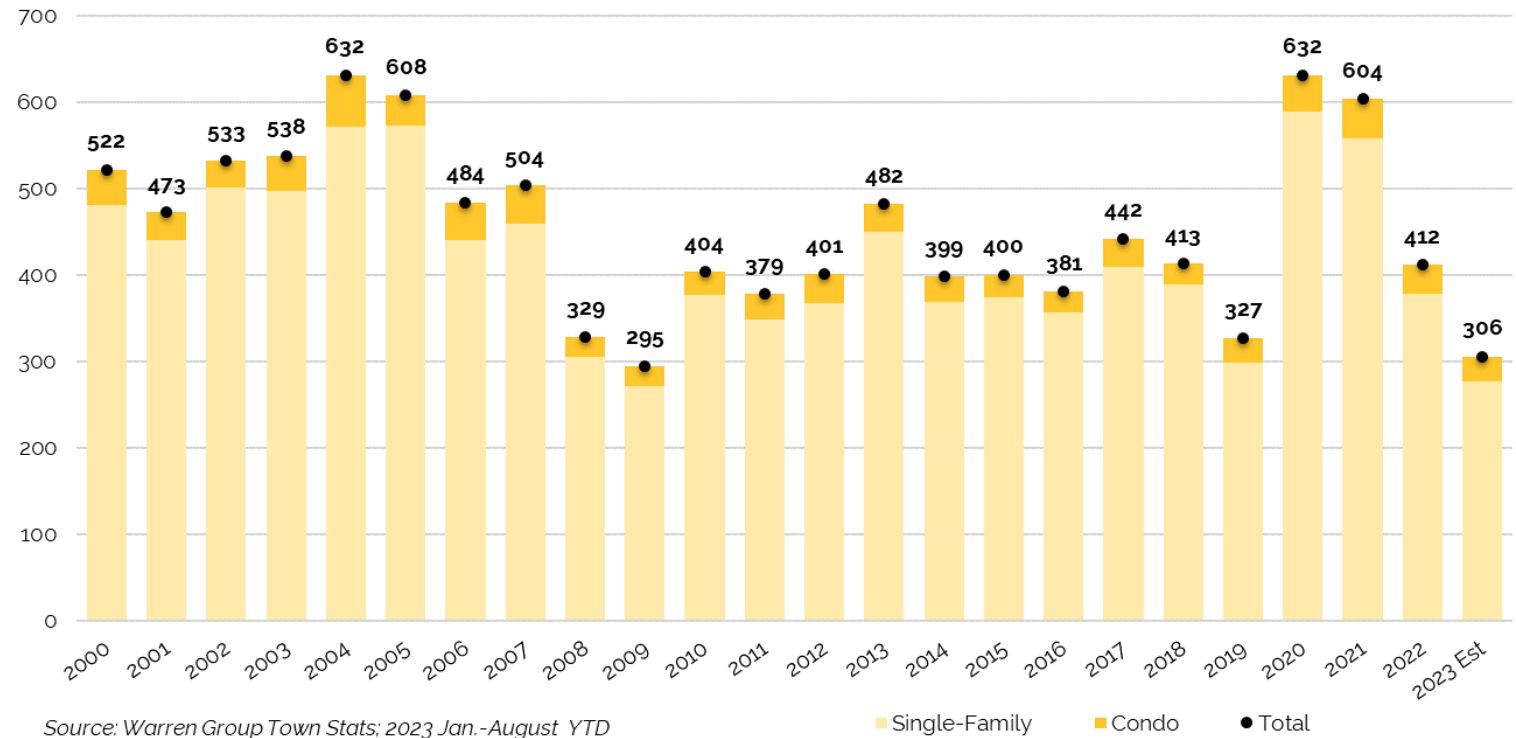
Source: Connecticut Department of Public Health & Westport Town Clerk. 2023 extrapolated from Jan. - September actual births. Beginning in 2019, births transitioned from calendar year to September to August to align with new Kindergarten entry age requirements.



Housing Market

- Significant jump in sales in 2020 and 2021, with sales equaling peak seen in the mid-2000s prior to the Great Recession
- Sales slowed in 2022, returning to levels seen in 2013-2018 time period.
- YTD 2023 sales are the lowest levels since 2009 and are on pace for just 306 total sales.
- Single-family sales are decreasing at a faster rate than condominiums.
- Reduced inventory and high prices are all contributing factors to current housing market conditions.

Westport Home Sales (2000-2023)



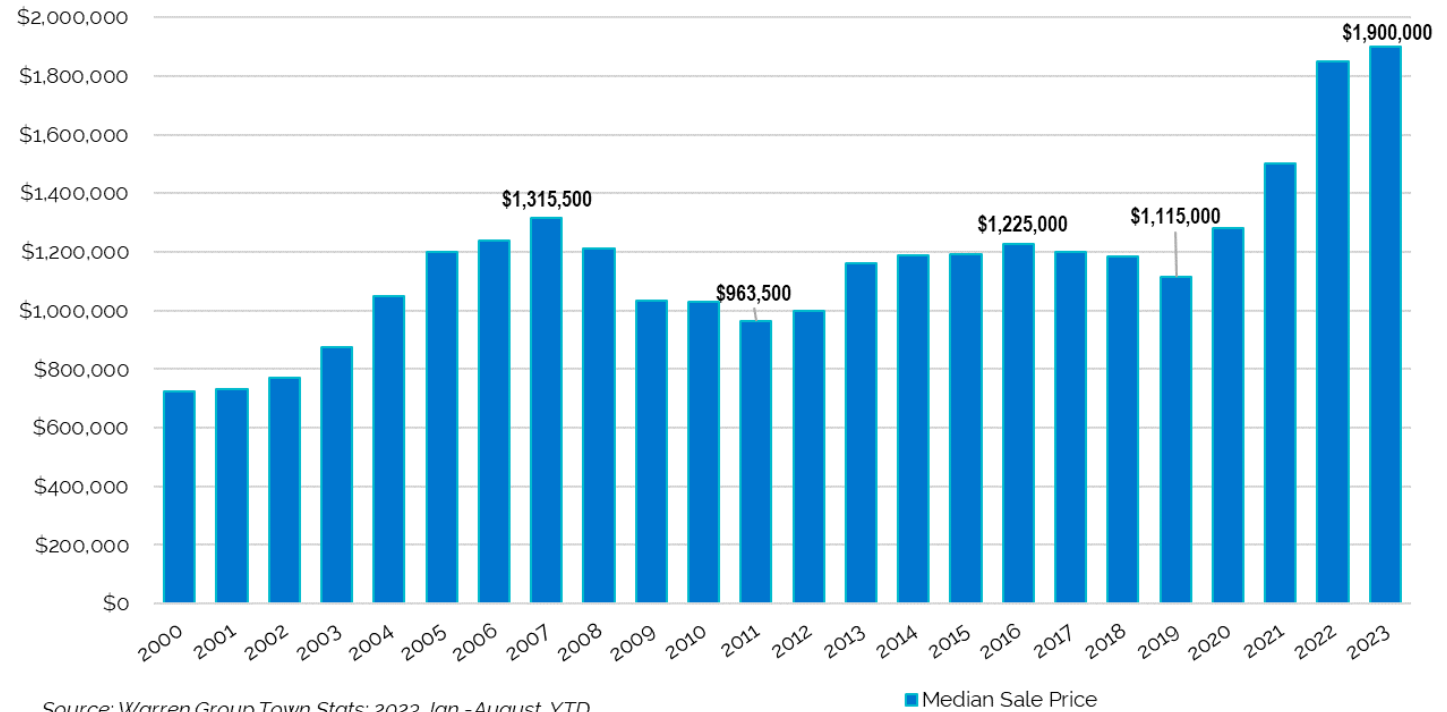
Source: Warren Group Town Stats; 2023 Jan.-August YTD extrapolated full year



Housing Market

- Dramatic increase in median single-family sale price since 2019, increasing by 70% to \$1.9 million for 2023 YTD.
- Rate of increase has slowed between 2022 and 2023 YTD.
- Single-family home sale prices now greatly exceed levels during the prior housing peak of the early 2000's
- Median sale price for condos is \$845K YTD, up from \$575K in 2019

Westport Median Sale Price Single Family Homes (2000-2023 YTD)



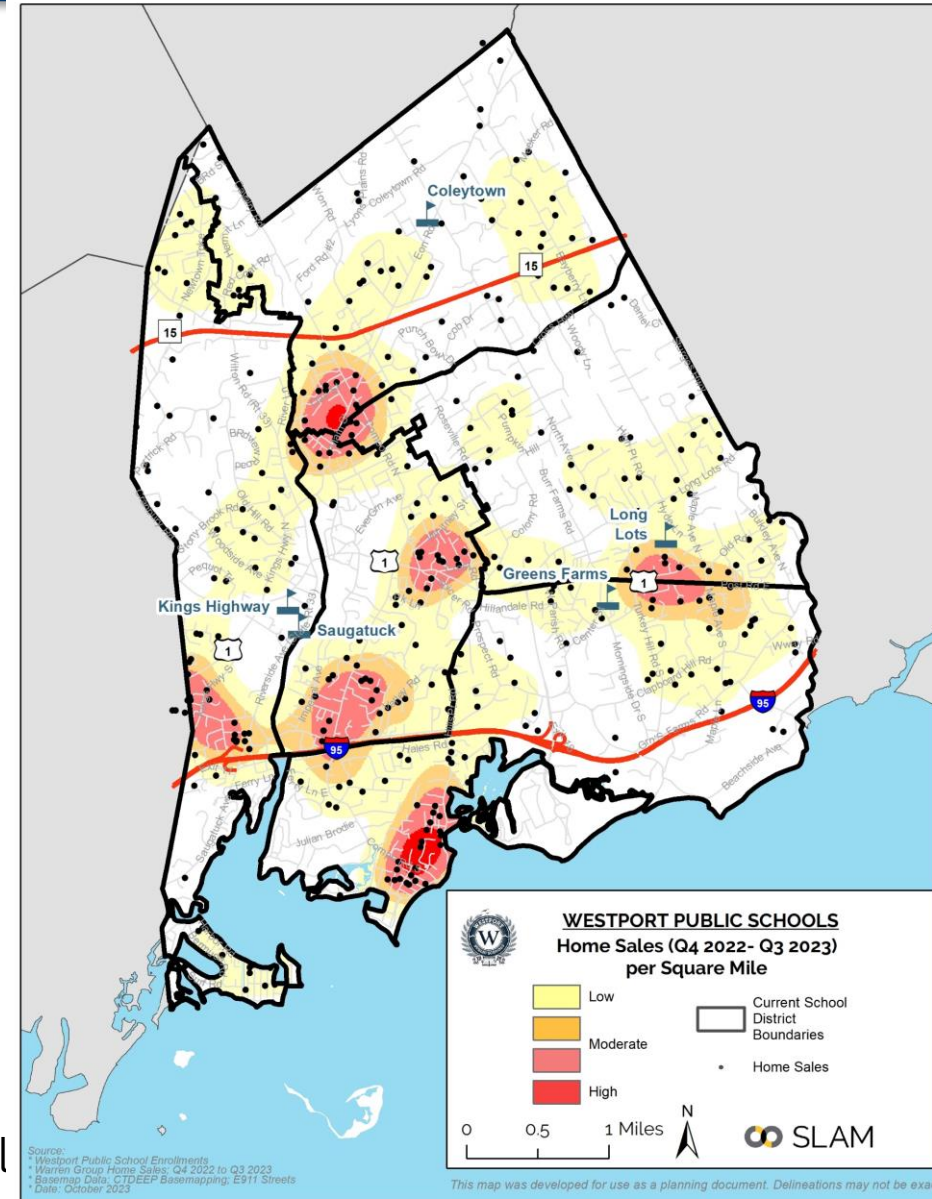


Home Sale “Hotspot”

- The greatest density of recent home sales are located near Compo Cove, Route 1, and the neighborhoods around Compo Rd and Main St.
- Current hotspot map shows similar pattern to 2022 analysis, albeit driven by fewer home sales
- Historically, Long Lots and Greens Farms have the greatest share of sales while Coleytown and Saugatuck have the lowest share of sales
 - However, notable decrease in sales in Long Lots for the 2023-24 school year

Distribution of Home Sales, by Attendance Zone

School	2019	2020	2021	2022	2023 YTD	5-Year Avg
Coleytown	16.8%	16.5%	17.0%	20.0%	18.5%	17.6%
Greens Farms	22.2%	22.2%	21.1%	20.6%	24.2%	21.9%
Kings Highway	23.6%	19.0%	21.1%	22.7%	21.9%	21.3%
Long Lots	22.2%	24.4%	23.6%	22.0%	16.8%	22.4%
Saugatuck	15.1%	18.0%	17.2%	14.7%	18.5%	16.8%

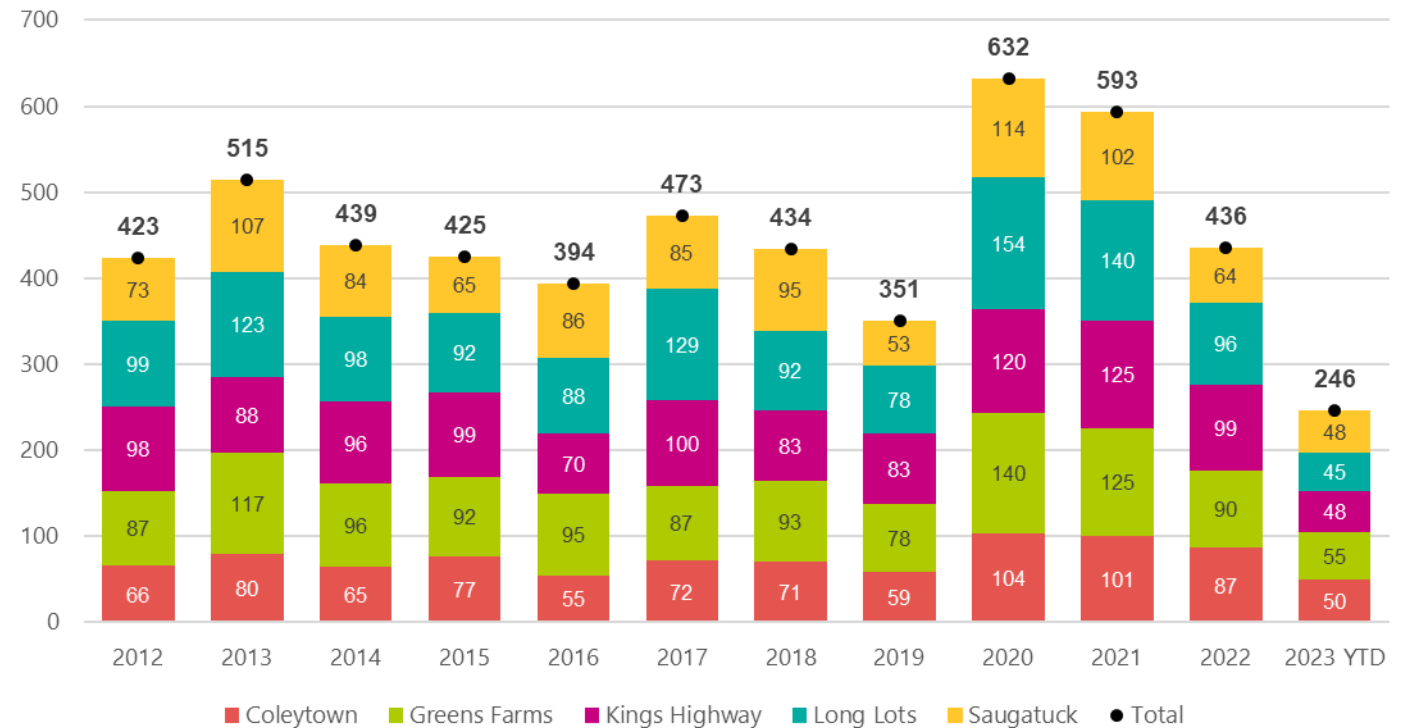




Housing Market

- Much higher sales throughout all elementary districts in 2020 and 2021.
- 2023 Year-to-date home sales through September are below levels seen over the last ten years. This impact has been felt across all elementary districts.
- Greens Farms, Coleytown, and Saugatuck each had a higher share of sales compared to the 5-year average.
- Long Lots had a much smaller share of sales in 2023 compared to the prior four years.

Westport Home Sales by Elementary District 2012 to 2023 YTD



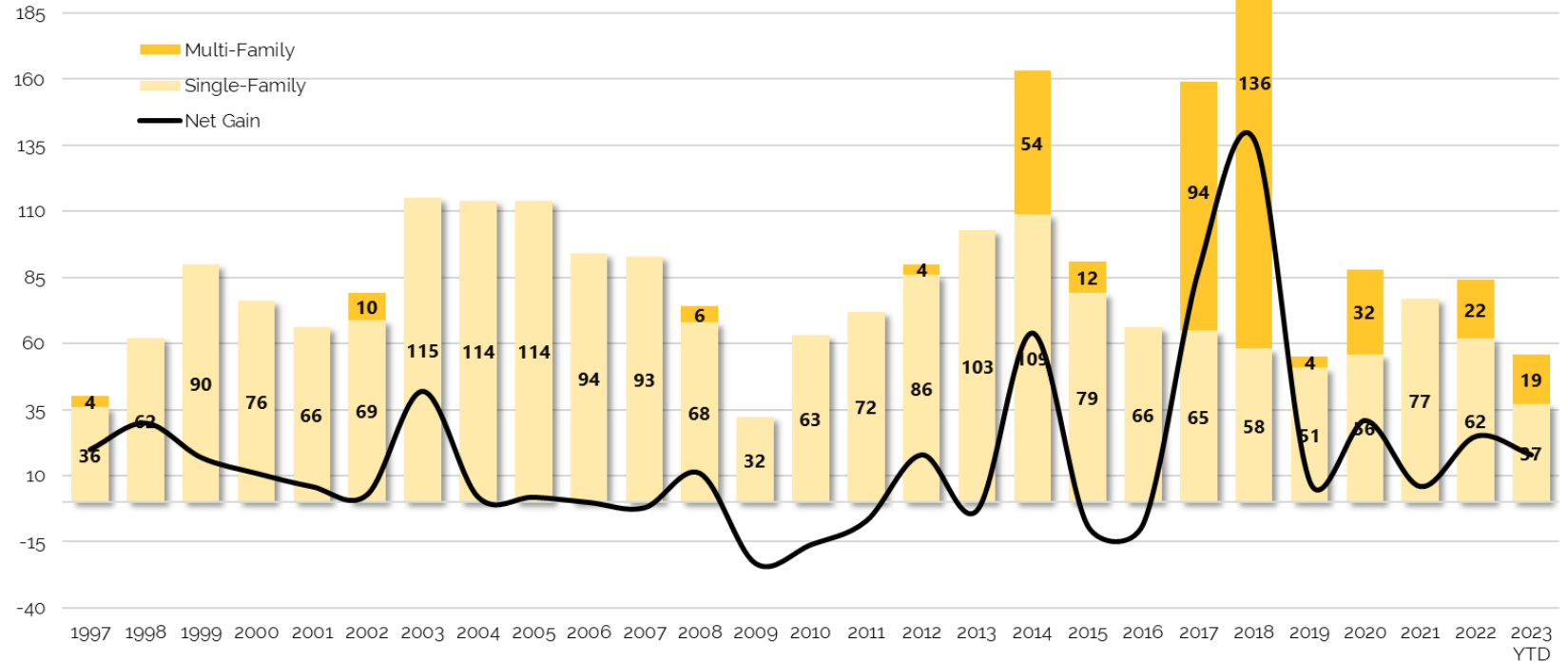
Source: The Warren Group. YTD sales based on YTD data through September. Totals differ slightly from town-wide totals due to differences in reporting methodology. Note that some addresses have been redacted and location within Westport is unknown



Housing Trends

- Teardown/rebuilds continue to predominate in a largely built-out community; over the last ten years, Westport has seen 660 single-family permits, and 673 demolition permits
- Sizable net gains in 2017 and 2018 tied to new multi-family construction
- 2023 YTD through August is trending on par with previous four years at 56 units YTD (37 SF & 19 MF units).

Housing Permits 1990-2023 YTD



Source: DECD, 1997 to 2022. 2023 YTD data provided by the Westport Building Department through September.



Recent and Approved Housing

Address	Status	Total Units	Affordable Units	Approval Date
793 Post Road East	Constructed	28	6	3/15/2018
33 Elm Street	Constructed	4	1	3/15/2018
500 Main Street (Daybreak)	Constructed	9	0	6/14/2018
201 Main Street (Belden Place)	Constructed	14	3	4/23/2020
1480 Post Road East	Constructed	32	7	11/27/2019
54 Wilton Road	Constructed	12	0	4/25/2018
260 Riverside Avenue	Constructed	9	2	10/8/2020
41 Richmodville Avenue	Constructed	33	7	6/25/2020
122 Wilton Road	Under Construction	19	6	10/22/2020
553, 570 & 580 Riverside Ave/9 Ketchum St	Approved	17	3	10/17/2019
Post Road West	Approved	68	25	6/17/2021
Hiawatha Lane	Approved	157	47	5/12/2021
950 Post Road	Approved	14		5/27/2021
259 Riverside Avenue	Proposed	8		TBD

Source: Town of Westport Planning Department website, October 2023

- No major projects of scale approved in the last 12 months
- However, there are still several large multi-family developments that have been approved but not yet built, including Hiawatha Lane (157 units) and Post Road West (68 units). These projects are carried forward and student generation is included in the projections

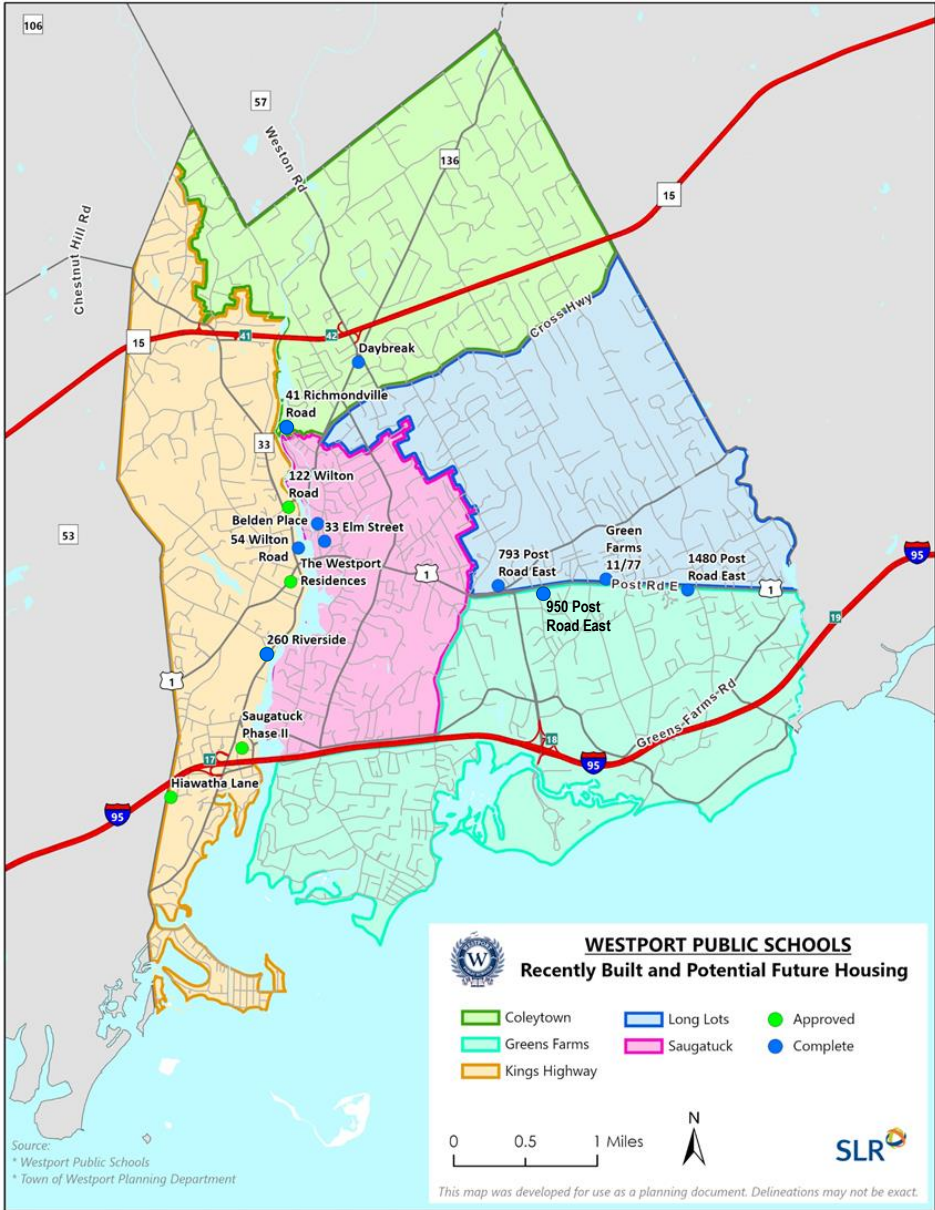


Recent and Approved Housing

- Recent and approved housing is primarily concentrated in Downtown Westport and the Post Road/Route 1 Corridor
- Approved Hiawatha Lane & Post Road West (formerly "The Westport Residences") are located in Kings Highway attendance zone
- Student generation from future housing was estimated by examining enrollments in other condominium and apartment developments in Westport as well as review of ESI Multipliers

Apartment Comps
 Hales Court
 Hidden Brook/Sasco Creek
 Greens Farms 11/77

Condo Comps
 Harvest Commons
 Regents Park
 Terra Nova Cir
 793 Post Road East





Estimated Student Generation

Estimated Students Generated from Approved Housing Developments

Address	Status	Total Units	Estimated Student Generation			
			Elementary	Middle	High	Total
553, 570 & 580 Riverside Ave/9 Ketchum St	Approved	17	1	1	1	3
950 Post Road	Approved	14	1	0	1	2
122 Wilton Road	Approved	19	2	1	1	4
Post Road West "The Westport Residences"	Under Const.	68	7	4	7	18
Hiawatha Lane	Approved	157	16	8	16	40
Total:		275	27	14	26	67

Source: Town of Westport Planning Department, October 2023

Multipliers and student generation developed based on comparable apartment and condo properties in Westport & ESI Multipliers

- For Hiawatha Lane and the Post Road West, enrollment multipliers have been phased into the projections starting in 2024-25
- Smaller projects are captured in the baseline persistency ratios and are “built in” to the projections model



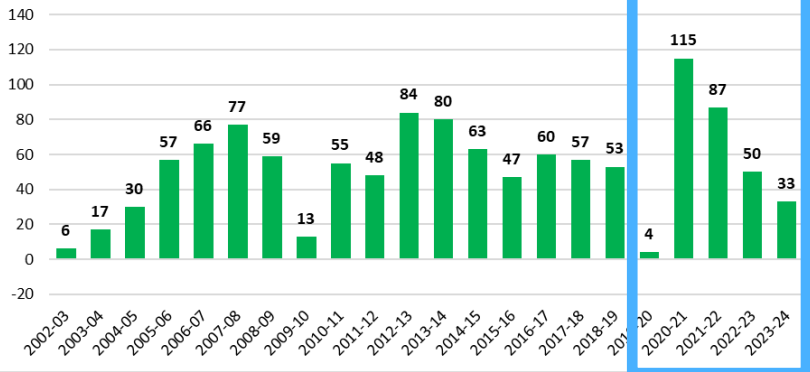
Enrollment Trends & Analysis

Enrollment Trends & Analysis

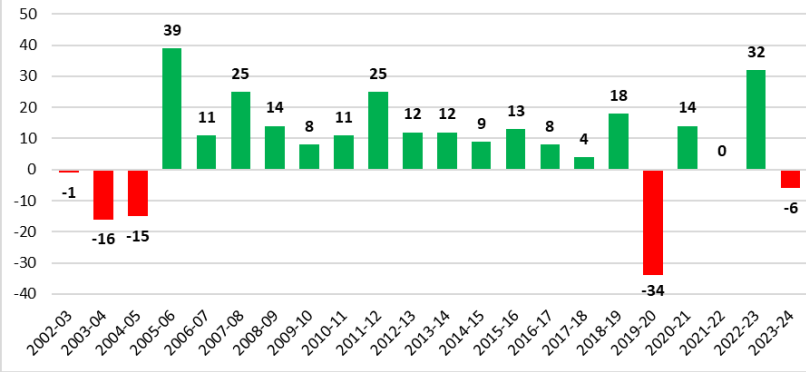


Net Migration

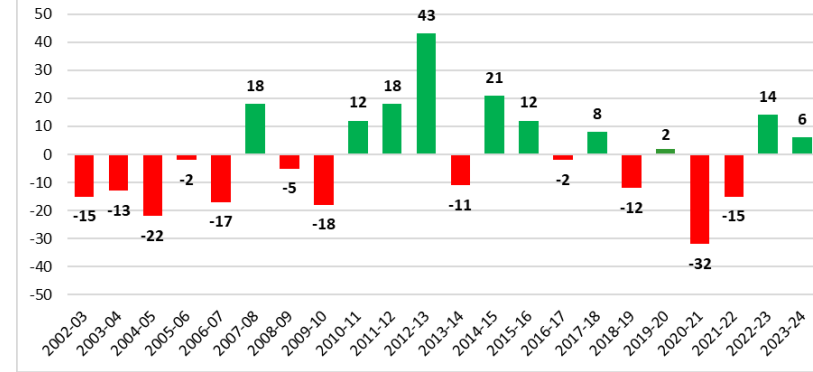
Historic Elementary Net Migration



Historic Middle School Net Migration



Historic High School Net Migration

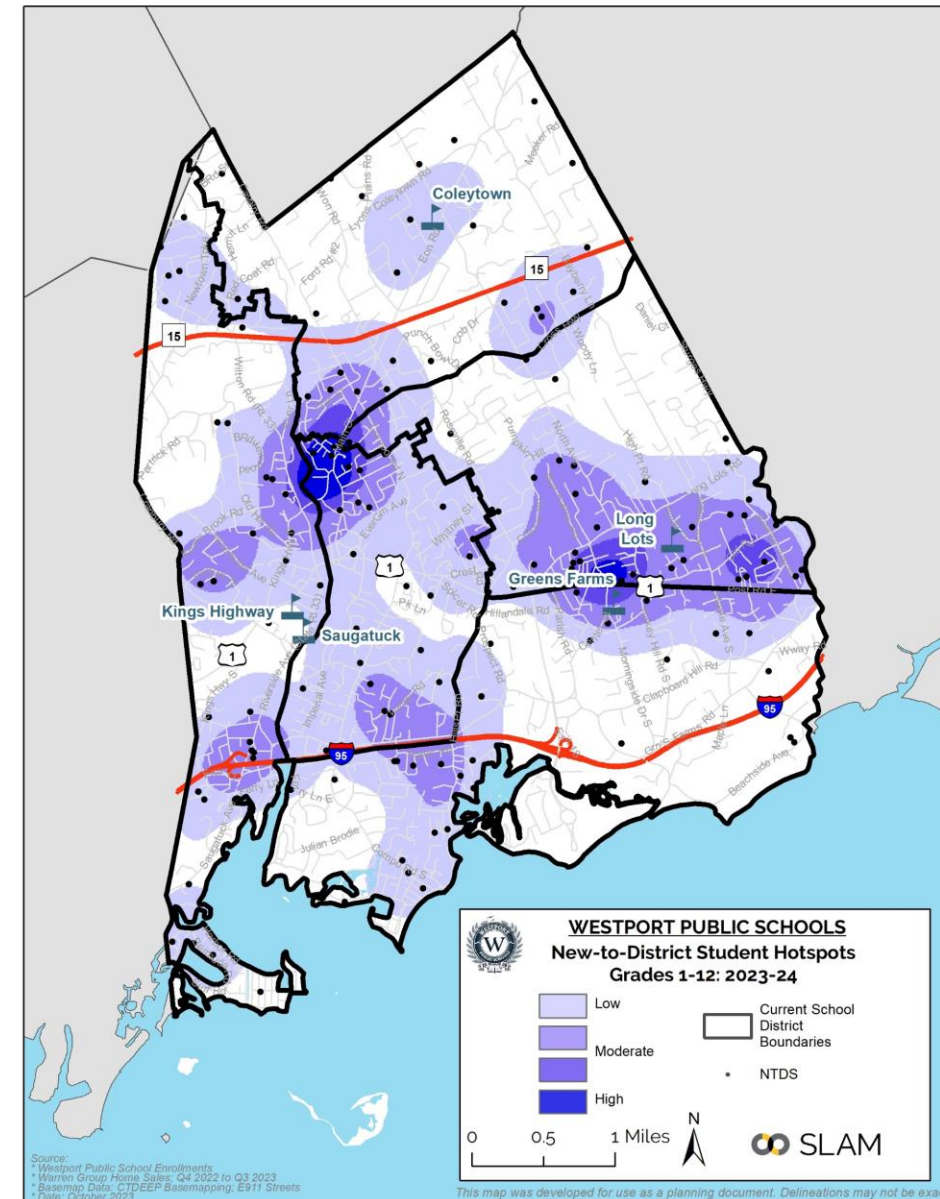
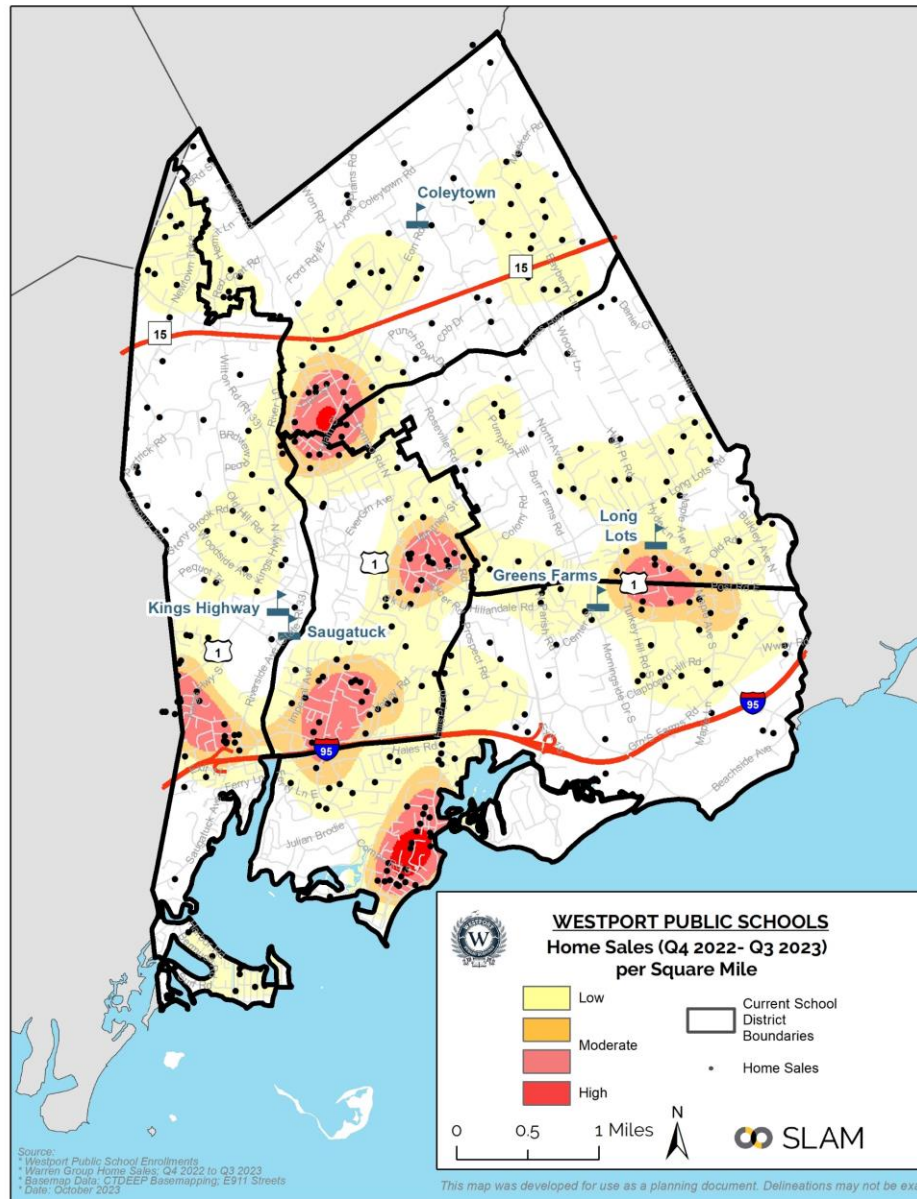


- After a period of elevated elementary net in-migration over the three prior years, net in-migration for 2023-24 was just +33 students, which is below pre-pandemic levels.
- After experiencing high level of in-migration (+32) in 2022-23, the middle school grades saw a small level of out-migration (-6) in 2023-24.
- After two years of high school net out-migration in 2020-21 and 2021-22, WPS saw net in-migration for the 2022-23 school year at +14 students and for the 2023-24 school year at +6 students.



Housing Market & Student Migration

- A side-by-side comparison of “Hot Spots” for home sales and “New Students” shows a good alignment except in Compo Beach area

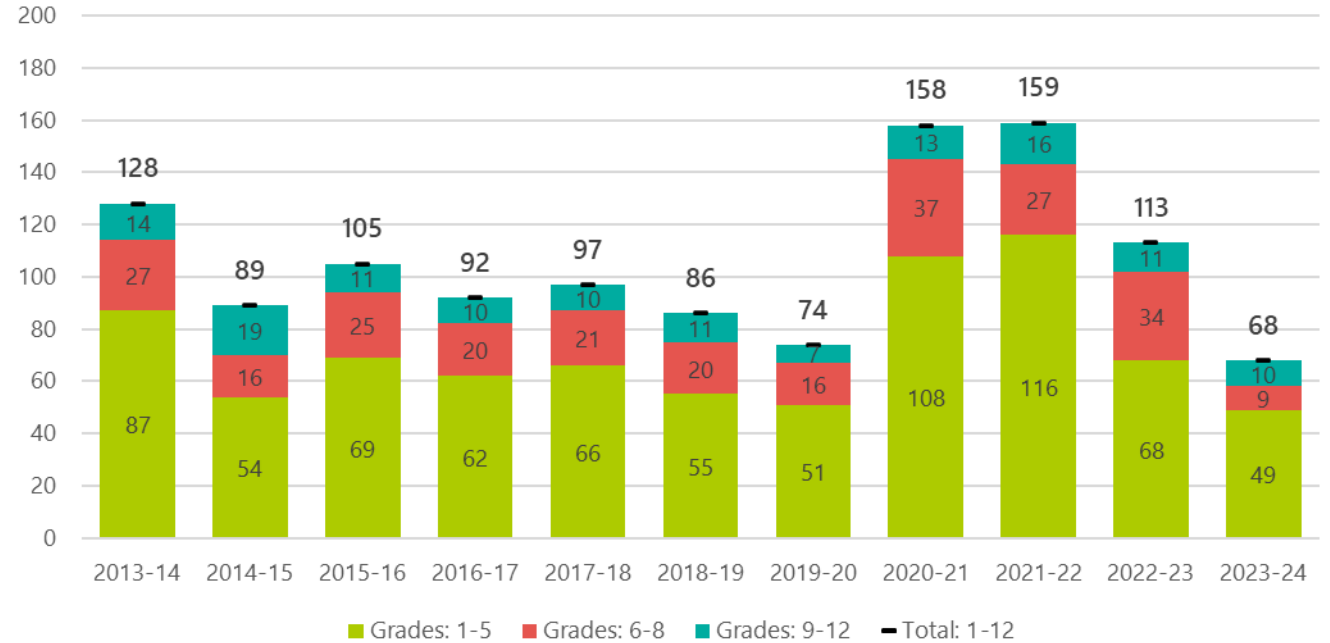




Housing Market & Student Migration

- Matching of known home sales to students entering the system (unique ID not present in prior year) yields an estimate of students generated from housing turnover
- After two years of very strong migration linked to home sales, the number of new-to-district students has decreased over the last two years.
- Number of students matched to home sales in 2023-24 is lowest in recent memory and aligns with decreasing number of overall home sales.

New to District Students Attributed to the Prior Year's Home Sales (2013-14 to 2023-24)

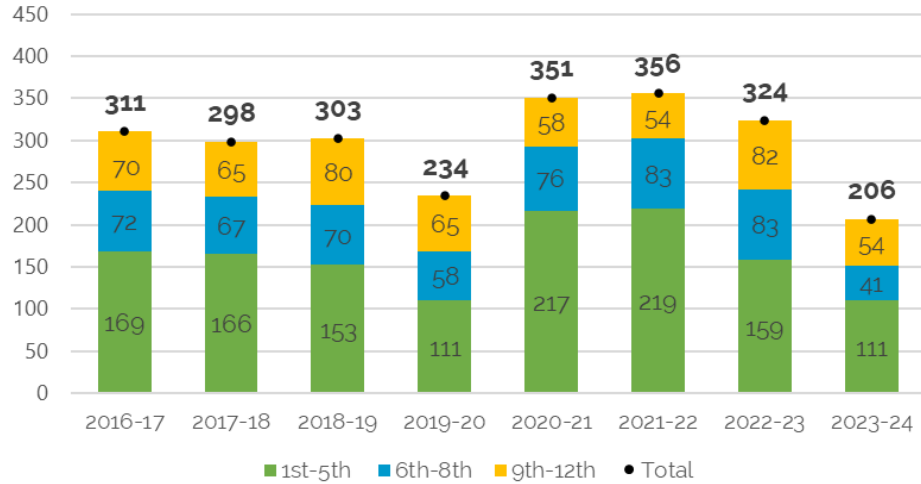


Source: Westport Public Schools, Warren Group
 To be counted as matching sale home must be sold between Q4 of previous year, and Q1-Q3 of current year

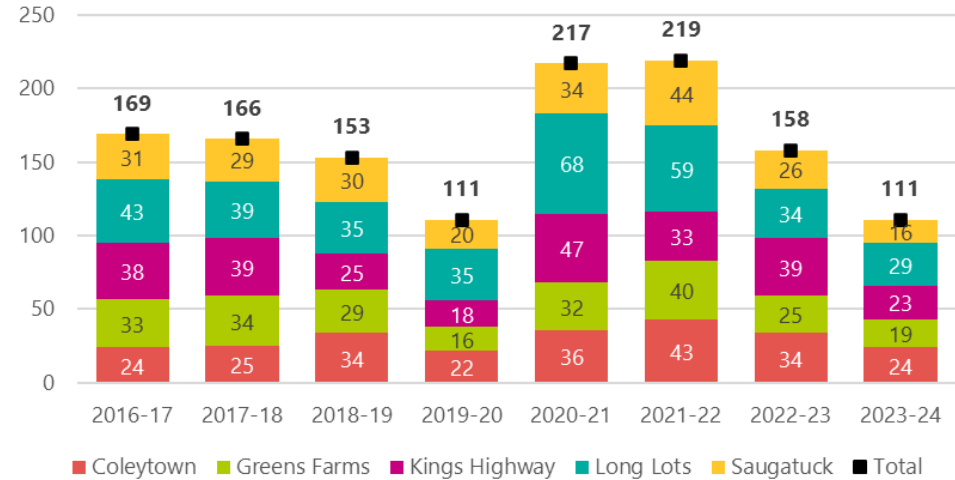


Student Migration

New-to-District Students By Grade Grouping



New-to-District Students (Grades 1-5)



- The total number of “New to District (NTD)” was identified by comparing unique student identifiers (SASID’s) that were not enrolled the previous year (excludes K). This includes students that are attributed to home sales on the previous slide
- Overall, NTD students was down ~120 students from last year at just 206 total students.
- For Grades 1-5, there were a total of 111 NTD students, which is on par with 2019-20 lows, and is well below the last three years. Decrease was felt across all elementary schools.

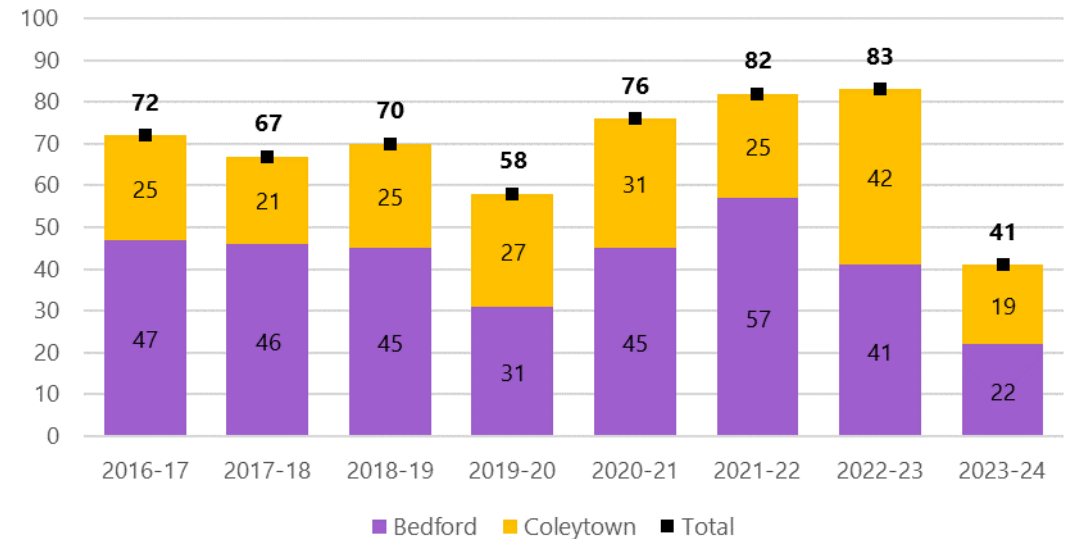


Student Migration

- After elevated NTD middle students in 2021-22 and 2022-23, NTD students for 2023-24 were the lowest in recent memory at just 41 students.
- Decrease in 2023-24 was felt across both middle schools.
- Historically, BMS has more new-to-district students, however over the last two years levels have been roughly equal.

Note: *2019-20 and 2020-21 enrollment data assigned to CMS or BMS based on address

New-to-District Students (Grades 6-8)



New-to-District Students by School (Grades 6-8)

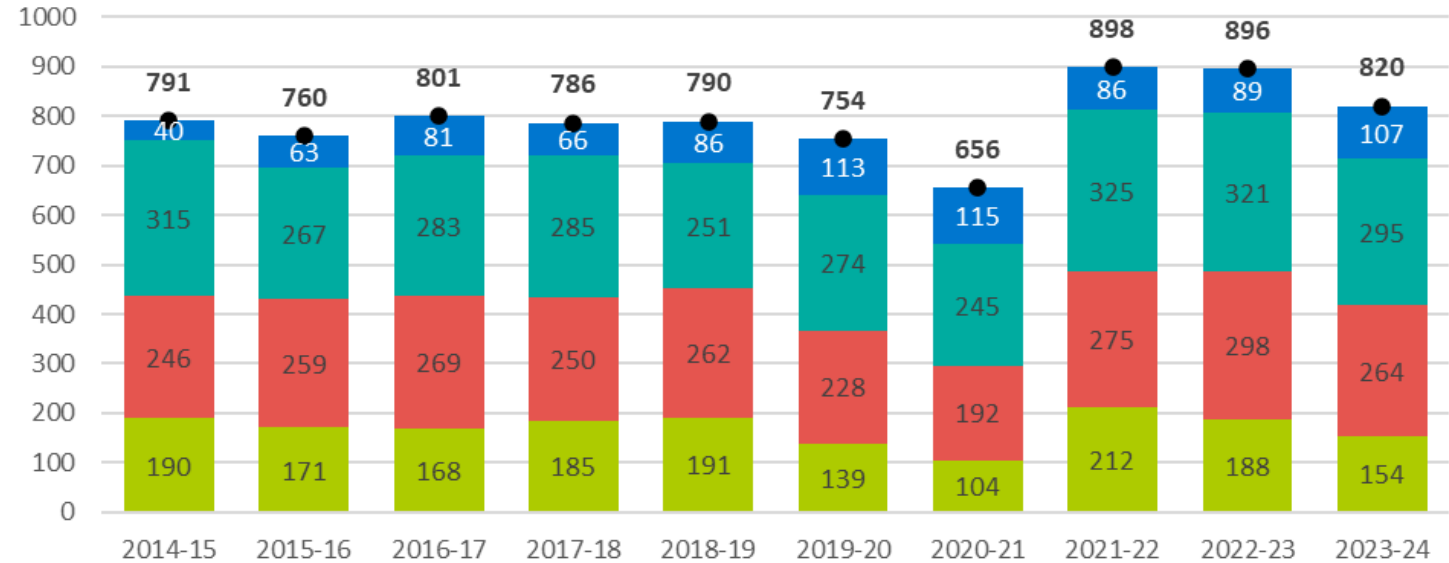
School Name	2016-17	2017-18	2018-19	2019-20	2020-21	2021-22	2022-23	2023-24
Bedford	47	46	45	31	45	57	41	22
Coleytown	25	21	25	27	31	25	42	19
Total	72	67	70	58	76	82	83	41



Pre-K Analysis

- WPS tracks enrollment of Westport residents in public and private Pre-K programs.
- In the years leading up to the pandemic, enrollment was stable between 750-800 per year, with the largest enrollment in the PK4 cohort.
- Sharp decrease in 2020-21 followed by sharp increase in 2021-22 and 2022-23, averaging nearly 900 students.
- For 2023-24, the PK4 and PK5 cohorts are larger than the historic average, while the PK3 and PK2 cohorts have returned to pre-pandemic levels

Westport Pre-K Enrollment, by Age



Source: Westport Public Schools
Includes Stepping Stones and Private Pre-K Programs

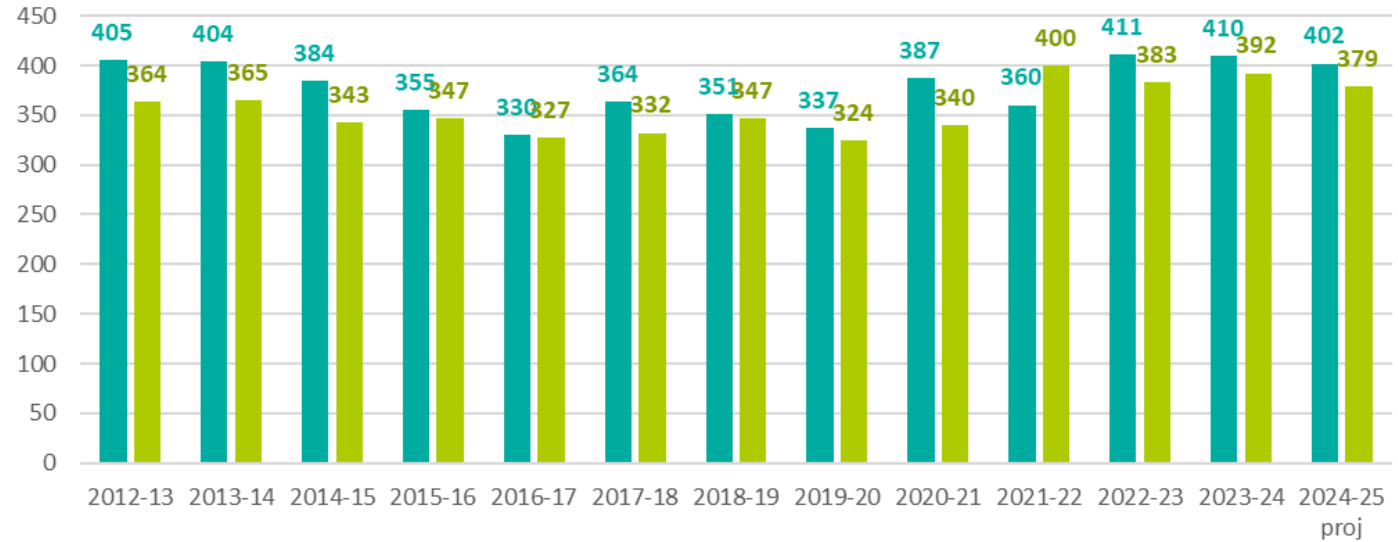
■ 2 YOs ■ 3 YOs ■ 4 YOs ■ 5 YOs ● Total



Pre-K Analysis

- Historically WPS Kindergarten enrollment is about 95% the size of the corresponding PK4 and PK5 class the year prior.
- This method works well for a 1-year forecast but is not as reliable for long-term forecasting due to impact of in-migration.
- Given higher-than-average enrollment in the current PK4 cohort, we would anticipate larger kindergarten class next year than would be projected using a traditional approach.
- Given the return of the PK2 and PK3 cohorts to pre-pandemic levels suggests that Kindergarten enrollment will eventually revert to historic trends.
- From the Pre-K Analysis, near term K projection models were modified accordingly.

Comparison of Kindergarten Enrollment and PK4/5 Enrollment the Year prior



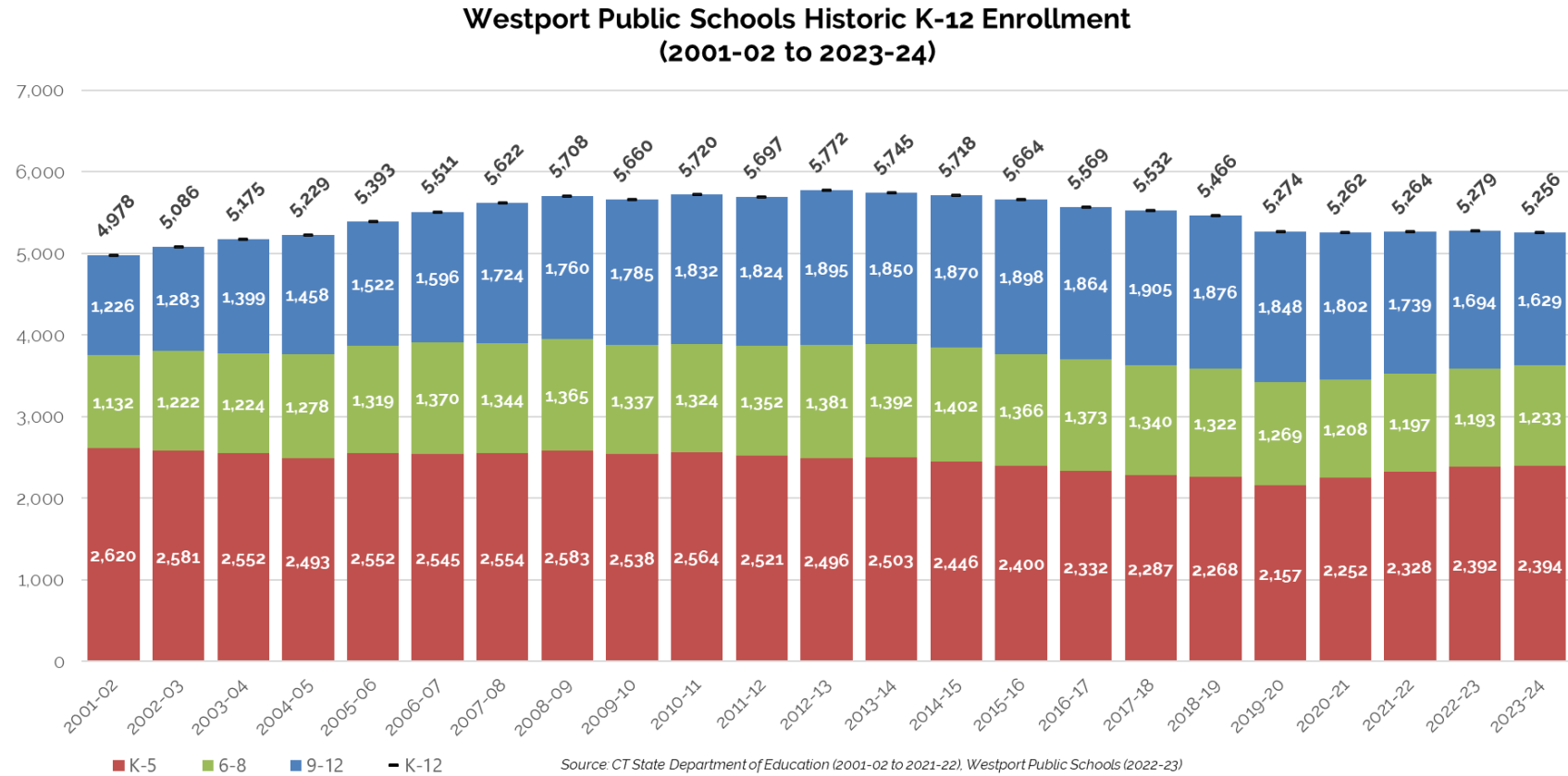
Source: Westport Public Schools
Includes Stepping Stones and Private Pre-K Programs

■ PK 4 and 5 year olds year prior ■ K enrollment



Historic Enrollments

- Overall, K-12 enrollment was stable since the 2019-20 school year, however, different trends have been experienced at elementary, middle and high
- Declining elementary enrollment experienced since 2008-09 peak through 2019-20 school year. However, over the last five years, elementary enrollment has increased by 11%, driven by larger kindergarten classes and increased in-migration.
- Middle and high school enrollment have both decreased over the last four years, offsetting gains at the elementary level.





Historic Enrollments

Westport Public School Enrollment History
Pre-Kindergarten to 12th Grade

School Year	Birth Year	Births	K	1	2	3	4	5	6	7	8	9	10	11	12	PK
2001-02	1996	357	418	447	433	467	422	433	396	394	342	354	329	273	270	29
2002-03	1997	326	388	442	442	430	464	415	421	404	397	350	346	319	268	40
2003-04	1998	309	369	412	439	446	422	464	416	413	395	404	337	344	314	49
2004-05	1999	314	375	396	430	435	445	412	465	403	410	387	400	327	344	51
2005-06	2000	335	414	400	410	438	438	452	427	480	412	420	389	392	321	55
2006-07	2001	281	379	443	415	435	434	439	461	419	490	406	426	384	380	59
2007-08	2002	296	371	418	462	422	443	438	449	464	431	488	412	434	390	56
2008-09	2003	301	408	412	430	465	433	435	449	445	471	437	484	411	428	56
2009-10	2004	259	377	430	404	442	464	421	448	444	445	466	435	474	410	56
2010-11	2005	261	392	402	441	421	462	446	436	445	443	463	467	433	469	55
2011-12	2006	228	355	400	421	442	430	473	460	436	456	464	461	471	428	39
2012-13	2007	191	364	389	421	431	453	438	479	463	439	481	471	470	473	46
2013-14	2008	219	365	387	403	435	450	463	446	484	462	442	479	466	463	41
2014-15	2009	168	343	390	408	416	449	440	468	445	489	473	442	482	473	54
2015-16	2010	192	347	346	406	419	427	455	440	470	456	493	479	438	488	50
2016-17	2011	176	327	373	361	423	414	434	450	452	471	465	493	468	438	54
2017-18	2012	192	332	347	387	370	432	419	437	448	455	480	463	490	472	66
2018-19	2013	172	347	350	358	400	374	439	431	433	458	465	478	445	488	73
2019-20	2014	179	324	355	369	348	401	360	422	412	435	451	469	479	449	70
2020-21	2015	156	340	359	381	401	360	411	376	410	422	432	443	457	470	72
2021-22	2016	168	400	389	370	386	414	369	422	370	405	413	422	440	464	72
2022-23	2017	154	383	420	398	377	391	423	386	430	377	417	412	417	448	58
2023-24	2018	153	392	395	428	413	368	398	421	386	426	391	409	406	423	54

Source: State Department of Education, CeDar, 2001-02 to 2006-07; EdSight Enrollment Counts 2007-08 to 2022-23; Westport Public Schools 2023-24



K-5 Historic Enrollments

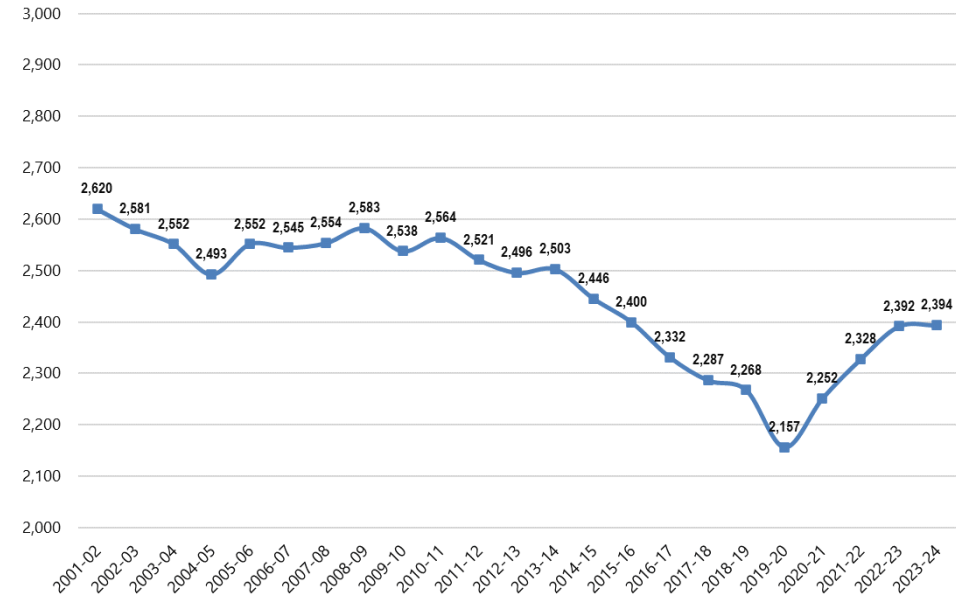
Historic Total Elementary (K-5) Enrollments
Westport Public Schools

Elementary School	2014-15	2015-16	2016-17	2017-18	2018-19	2019-20	2020-21	2021-22	2022-23	2023-24	5-Year Change	10-Year Change
Coleytown	410	411	377	369	383	391	424	446	477	487	24.6%	18.8%
Greens Farms	455	416	422	422	403	380	418	426	442	472	24.2%	3.7%
Kings Highway	498	491	495	463	471	446	451	446	449	463	3.8%	-7.0%
Long Lots	560	560	545	545	544	519	554	576	590	574	10.6%	2.5%
Saugatuck	518	516	483	483	466	422	405	421	434	398	-5.7%	-23.2%

Includes enrollment in the GFS and LLS intensive programs

- Elementary enrollment increased by 237 students or ~11% since 2019-20. Enrollment was stable between 2022-23 and 2023-24.
- Elementary enrollment increase has been driven by increased in-migration, and another large kindergarten cohort this year
- All schools except Saugatuck have experienced enrollment growth over the last five years
- Since 2019-20, the greatest enrollment increases have occurred at Coleytown (+96), Green's Farms (+92), and Long Lots (+55)

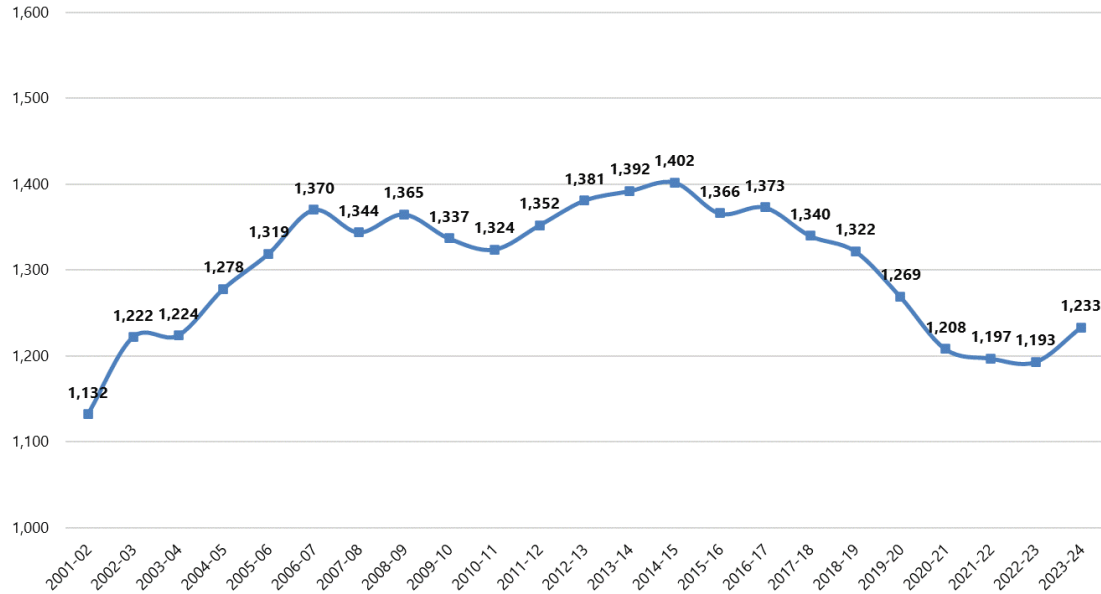
Westport Public Schools Historic K-5 Enrollment
(2001-02 to 2023-24)



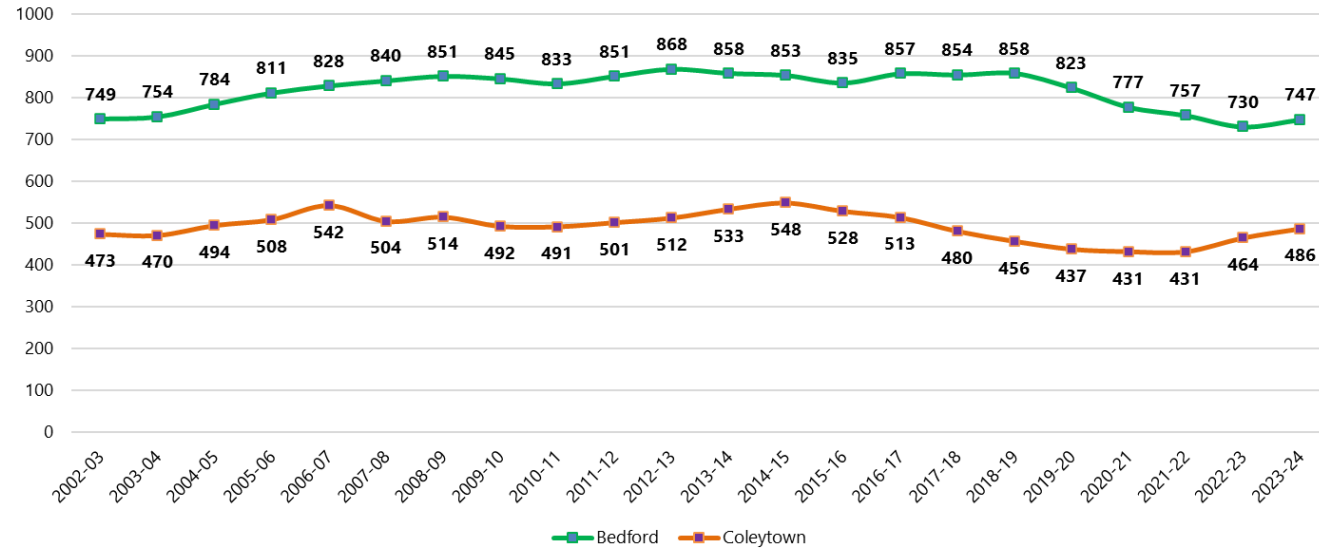


Middle School Historic Enrollments

Westport Public Schools Historic 6-8 Enrollment
(2001-02 to 2023-24)



Westport Middle (6-8) Enrollment by School
(2002-03 to 2023-24)



- 6-8 enrollment experienced historic peak in 2014-15 and has since decreased 12.1%; Enrollment flattened beginning in 2020-21 and grew by ~40 students for 2023-24
- After a period of stability from 2018-19 to 2021-22, CMS enrollment increased by 22 students since last year.
- After a period of decline through 2022-23, BMS saw enrollment increase by 17 students since last year.

*2019-20 and 2020-21 enrollment data assigned to CMS or BMS based on address

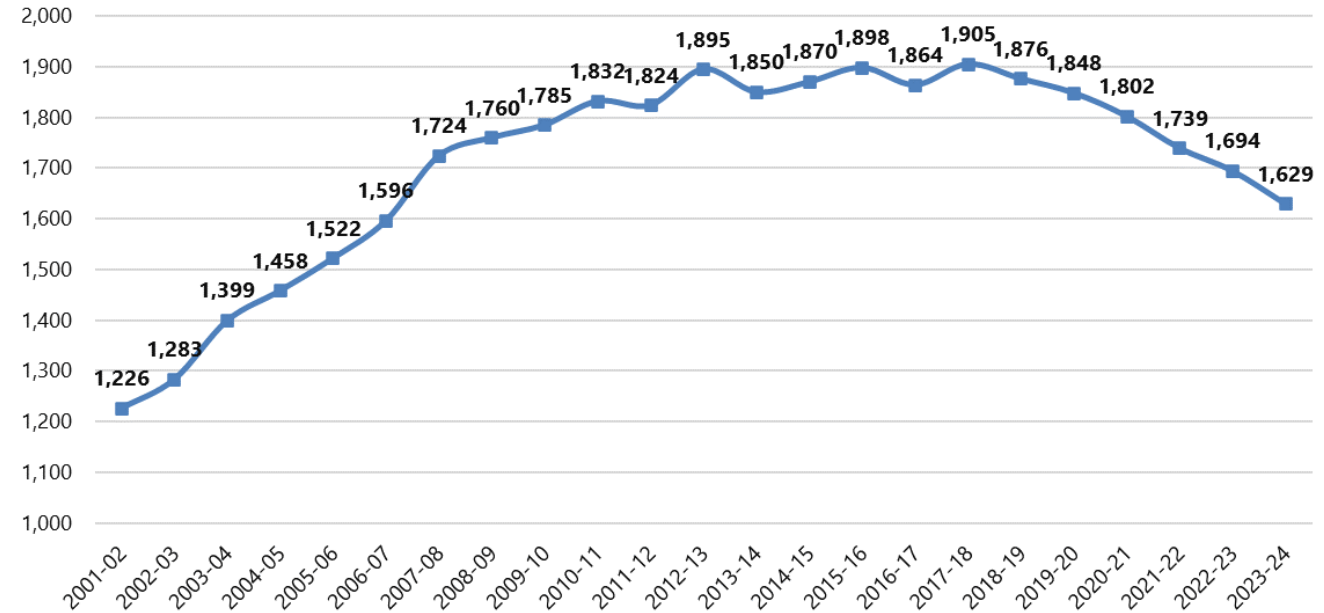




9-12 Historic Enrollments

- High school enrollment peaked at 1,905 students in 2017-18, and has since declined by 276 students or 14.5%
- Smaller 9th grade cohorts replacing larger graduating cohorts are contributing to continued enrollment decline at high school.
- Net in-migration of 9th graders helped slightly offset rate of decrease in 2023-24.

**Westport Public Schools Historic 9-12 Enrollment
(2001-02 to 2023-24)**



Source: CT State Department of Education (2001-02 to 2022-23), Westport Public Schools
2023-24 enrollment excludes out of district students who attend non-WPS facilities



Enrollment Projections

Enrollment Projections



Projections Primer

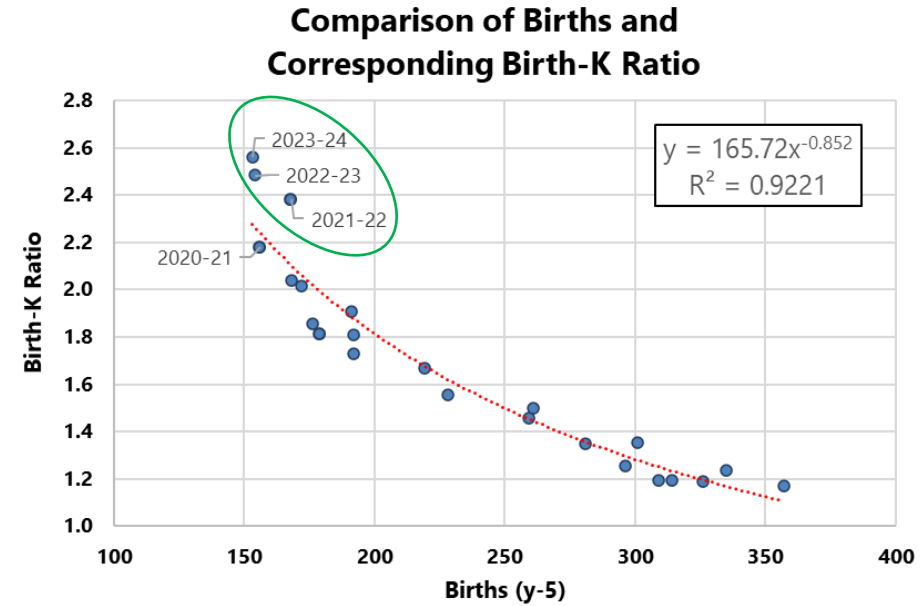
- Based on Cohort Survival Methodology – Standard method accepted by the OSCG&R for school construction projects
- The cohort survival methodology **relies on observed data from the recent past in order to project the near future**
- Persistency Ratios calculated from historic enrollment data to determine growth or loss in a class as it progresses through the school system
- Persistency Ratio of 1.0 means cohort size remains the same; 1.05 means the cohort size increases by 5%, or a cohort of 100 grows to 105 the following year
- Persistency Ratios account for the various external factors affecting enrollments: housing characteristics, residential development, economic conditions, student transfers in and out of system, and student mobility
- Changes in population, housing stock and tenure, and economic conditions help explain persistency ratios
- Changes in programming affect persistency ratios of individual schools
- Recent impacts due to the pandemic adds variability to student migration, enrollment trends, housing market conditions, residential mobility and overall economic conditions and labor market.



Persistency Ratios

Kindergarten through 12th Grade Persistency Ratios by School Year
2002-2003 to 2023-24

Year	Birth-K	K-1	1-2	2-3	3-4	4-5	5-6	6-7	7-8	8-9	9-10	10-11	11-12	Est. of Migration (1-7 / 2-8)
2002-03	1.1902	1.0574	0.9888	0.9931	0.9936	0.9834	0.9723	1.0202	1.0076	1.0234	0.9774	0.9696	0.9817	-0.6%
2003-04	1.1942	1.0619	0.9932	1.0090	0.9814	1.0000	1.0024	0.9810	0.9777	1.0176	0.9629	0.9942	0.9843	-0.8%
2004-05	1.1943	1.0732	1.0437	0.9909	0.9978	0.9763	1.0022	0.9688	0.9927	0.9797	0.9901	0.9703	1.0000	-0.4%
2005-06	1.2358	1.0667	1.0354	1.0186	1.0069	1.0157	1.0364	1.0323	1.0223	1.0244	1.0052	0.9800	0.9817	2.4%
2006-07	1.3488	1.0700	1.0375	1.0610	0.9909	1.0023	1.0199	0.9813	1.0208	0.9854	1.0143	0.9871	0.9694	1.6%
2007-08	1.2534	1.1029	1.0429	1.0169	1.0184	1.0092	1.0228	1.0065	1.0286	0.9959	1.0148	1.0188	1.0156	2.1%
2008-09	1.3555	1.1105	1.0287	1.0065	1.0261	0.9819	1.0251	0.9911	1.0151	1.0139	0.9918	0.9976	0.9862	1.0%
2009-10	1.4556	1.0539	0.9806	1.0279	0.9978	0.9723	1.0299	0.9889	1.0000	0.9894	0.9954	0.9793	0.9976	0.0%
2010-11	1.5019	1.0663	1.0256	1.0421	1.0452	0.9612	1.0356	0.9933	0.9977	1.0404	1.0021	0.9954	0.9895	1.3%
2011-12	1.5570	1.0204	1.0473	1.0023	1.0214	1.0238	1.0314	1.0000	1.0247	1.0474	0.9957	1.0086	0.9885	2.1%
2012-13	1.9058	1.0958	1.0525	1.0238	1.0249	1.0186	1.0127	1.0065	1.0069	1.0548	1.0151	1.0195	1.0042	2.0%
2013-14	1.6667	1.0632	1.0360	1.0333	1.0441	1.0221	1.0183	1.0104	0.9978	1.0068	0.9958	0.9894	0.9851	2.2%
2014-15	2.0417	1.0685	1.0543	1.0323	1.0322	0.9778	1.0108	0.9978	1.0103	1.0238	1.0000	1.0063	1.0150	1.5%
2015-16	1.8073	1.0087	1.0410	1.0270	1.0264	1.0134	1.0000	1.0043	1.0247	1.0082	1.0127	0.9910	1.0124	1.9%
2016-17	1.8580	1.0749	1.0434	1.0419	0.9881	1.0164	0.9890	1.0273	1.0021	1.0197	1.0000	0.9770	1.0000	1.4%
2017-18	1.7292	1.0612	1.0375	1.0249	1.0213	1.0121	1.0069	0.9956	1.0066	1.0191	0.9957	0.9939	1.0085	1.4%
2018-19	2.0174	1.0542	1.0317	1.0336	1.0108	1.0162	1.0286	0.9908	1.0223	1.0220	0.9958	0.9611	0.9959	1.9%
2019-20	1.8101	1.0231	1.0543	0.9721	1.0025	0.9626	0.9613	0.9559	1.0046	0.9847	1.0086	1.0021	1.0090	-1.4%
2020-21	2.1795	1.1080	1.0732	1.0867	1.0345	1.0249	1.0444	0.9716	1.0243	0.9931	0.9823	0.9744	0.9812	3.5%
2021-22	2.3810	1.1441	1.0306	1.0131	1.0324	1.0250	1.0268	0.9840	0.9878	0.9787	0.9769	0.9932	1.0153	1.4%
2022-23	2.4870	1.0500	1.0231	1.0189	1.0130	1.0217	1.0461	1.0190	1.0189	1.0296	0.9976	0.9882	1.0182	2.3%
2023-24	2.5621	1.0313	1.0190	1.0377	0.9761	1.0179	0.9953	1.0000	0.9907	1.0371	0.9808	0.9854	1.0144	0.5%



Source: State Department of Education, Public School Information System (2001-2020), Westport Public Schools (2021-22) enrollments, and CT Department of Public Health (CT DPH) Birth Data.

- For 2023-24, net in-migration dropped to 0.5% after 3 years of elevated net-migration
- Birth-K of 2.56 was the greatest over the last 20-years, leading to the third consecutive year with an abnormally large kindergarten cohorts



Projections Assumptions

These projections are predicated on the following assumptions:

- Pre-K enrollment will grow remain at recent (6-year average) levels the next two years before increasing to 98 students beginning in 2026-27
- Housing, student generation, and future birth assumptions at the districtwide level will prove accurate
- Housing Multipliers for developments have been applied locally to all projection models. The recent pace of new home construction will continue.
- Elevated Birth-K assumptions for the next year tied to in-migration holds true, followed by a return to the historic variable Birth-K ratio starting in 2025-26.
- **High projections:** Assume high birth projections (average 201 annually) and housing sales will return to elevated level for next 3-4 years; albeit not height of pandemic levels. Student in-migration averages 1.9%, which is in line with recent elevated levels.
- **Medium projections:** Assume medium birth projections (average 191 annually), housing market returns to pre-pandemic levels. Student in-migration averages 1.6%, which aligns with historic average
- **Low projections:** Assume low birth projections (average 177 annually) and housing activity remains at current level and in-migration averages 0.8%, which is below historic average



Kindergarten Caveats & Assumptions

- Historically, variable Birth-K ratio was used to project enrollment based on a historic “best fit” line with R-squared value of ~ 0.97 , excluding the last 2 years. However, this best fit line did not capture the elevated in-migration that WPS has seen over the last two years, resulting in consecutive large kindergarten classes.
- Kindergarten enrollment has corresponded well with the number of Westport resident 4- and 5-year-olds enrolled Pre-K programs (including private providers) the year prior.
 - Every 100 PK4 and PK5 year olds typically results in ~ 95 Kindergarteners the following year on average.
- If historic trend holds true, larger PK4 cohort enrolled this year will result in larger kindergarten classes next year.
 - Kindergarten projections for 2024-25 revised upwards to better align with corresponding PK cohorts.
 - Kindergarten projection performed well in last two years using this model.
- Current PK2 and PK3 cohorts are similar in size to pre-pandemic levels. Projections assume return to historic variable Birth-K ratio beginning in 2025-26.



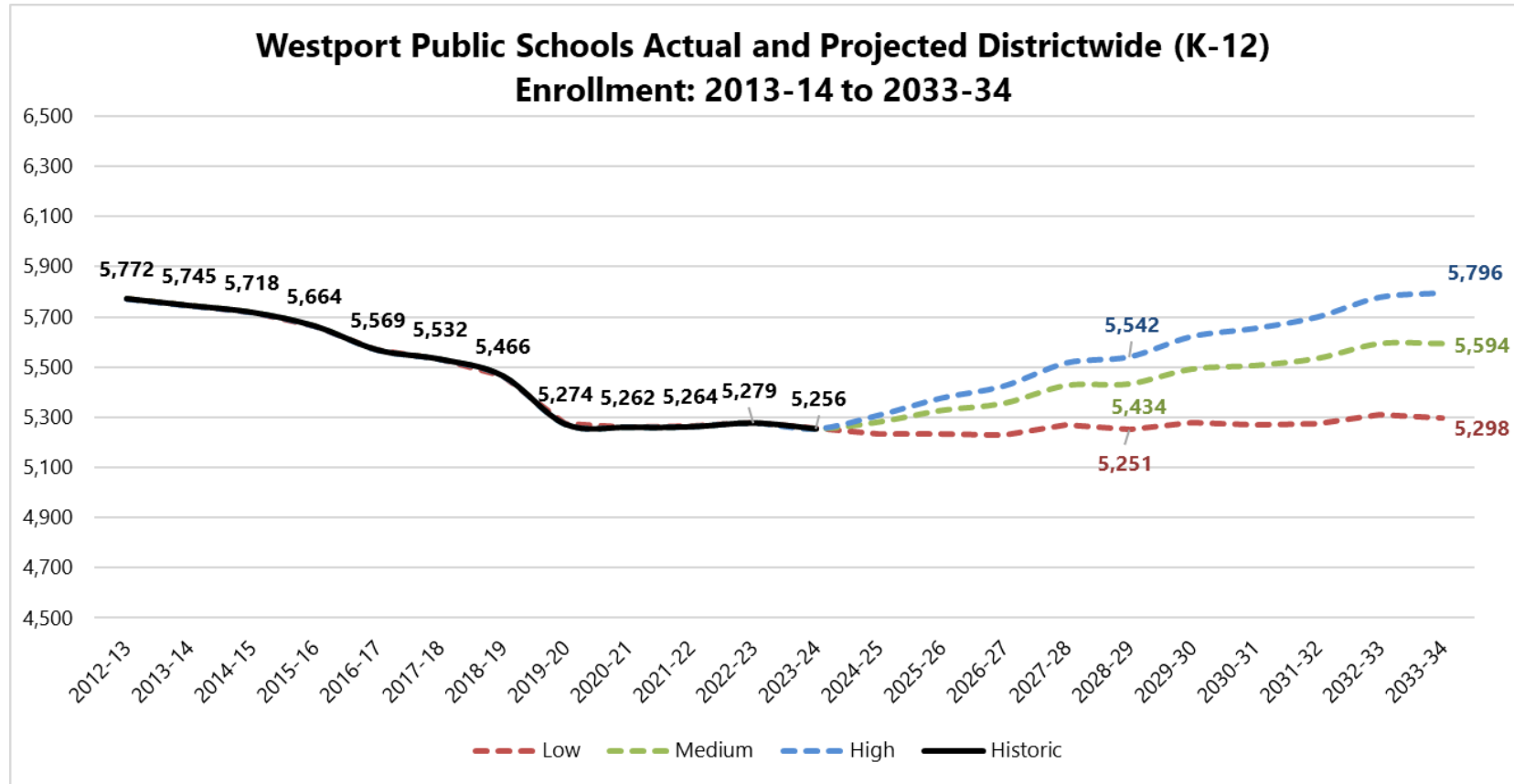
Kindergarten Caveats & Assumptions

- New Kindergarten entry date becomes effective for 2024-25 school year per state law.
 - Cutoff date shifts from January 1st to September 1st.
- 2024-25 kindergarten class will have a smaller eligibility window (8 months) as cutoff date transitions to September 1st. Subsequent years will return to a 12-month eligibility window.
- State law allows for an exception process to enter kindergarten if a child turns 5 years old after September 1st.
- WPS has indicated that they will admit students who turn 5 years old between September 2nd and December 31st into the 2024-25 kindergarten class upon parental request and readiness.
 - Exemption process adds uncertainty to the kindergarten projections, since you cannot accurately forecast the number of parents that will request an exception.
- Based on SLAM's analysis of historic kindergarten enrollment, we estimate that there are ~52 students who turn 5 years old between September 2nd and December 31st who could request an exception to enter kindergarten for 2024-25. Our assumptions for the projections are as follows:
 - Low model assumes 50% of eligible students are granted exceptions
 - Medium model assumes 70% of eligible students are granted exceptions
 - High model assumes 90% of eligible students are granted exceptions



Districtwide Projections

- Both the High and Medium Models agree, showing steady growth, whereas the low model is projecting flatter enrollment
- By 2028-29, both High and Medium Models have a narrow band with enrollment ranging from 5,434-5,542 students
- Under the medium model, K-12 enrollment is projected to peak in 2032-33 at just under 5,600 students, then stabilize
- **Recent housing conditions, demographics and enrollment in-migration align best with Medium Model and represents the most likely direction. However, recent housing conditions and demographic shifts should be monitored.**

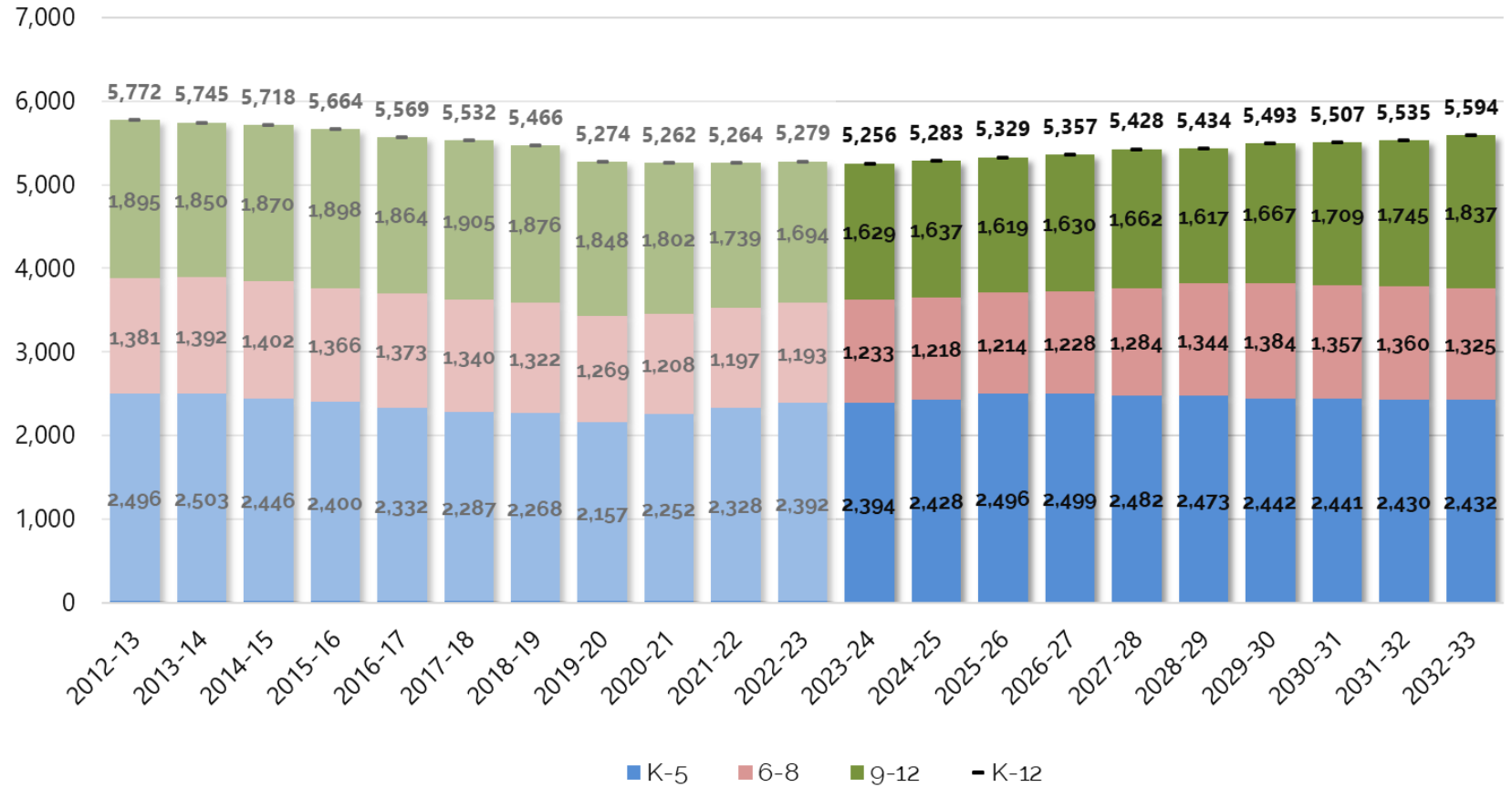




Districtwide Projections

- K-5 enrollment troughed in 2019-20 and has rebounded by ~12% since.
- K-5 enrollment is projected to continue to grow, peaking in 2026-27 at ~2,500 students; averaging 2,455 students over next decade
- 6-8 enrollment is projected to grow modestly over the next decade, peaking at 1,384 students in 2029-30.
- 9-12 enrollment is projected to trough in 2025-26 at ~1,620 students, followed by a period of projected growth, reaching 1,837 students by 2033-34.

Historic and Projected K-12 Enrollment (Medium) 2012-13 to 2033-34





Elementary School Projections (Medium)

Actual & Projected ES Enrollments 2023-24 to 2033-34 (Medium)

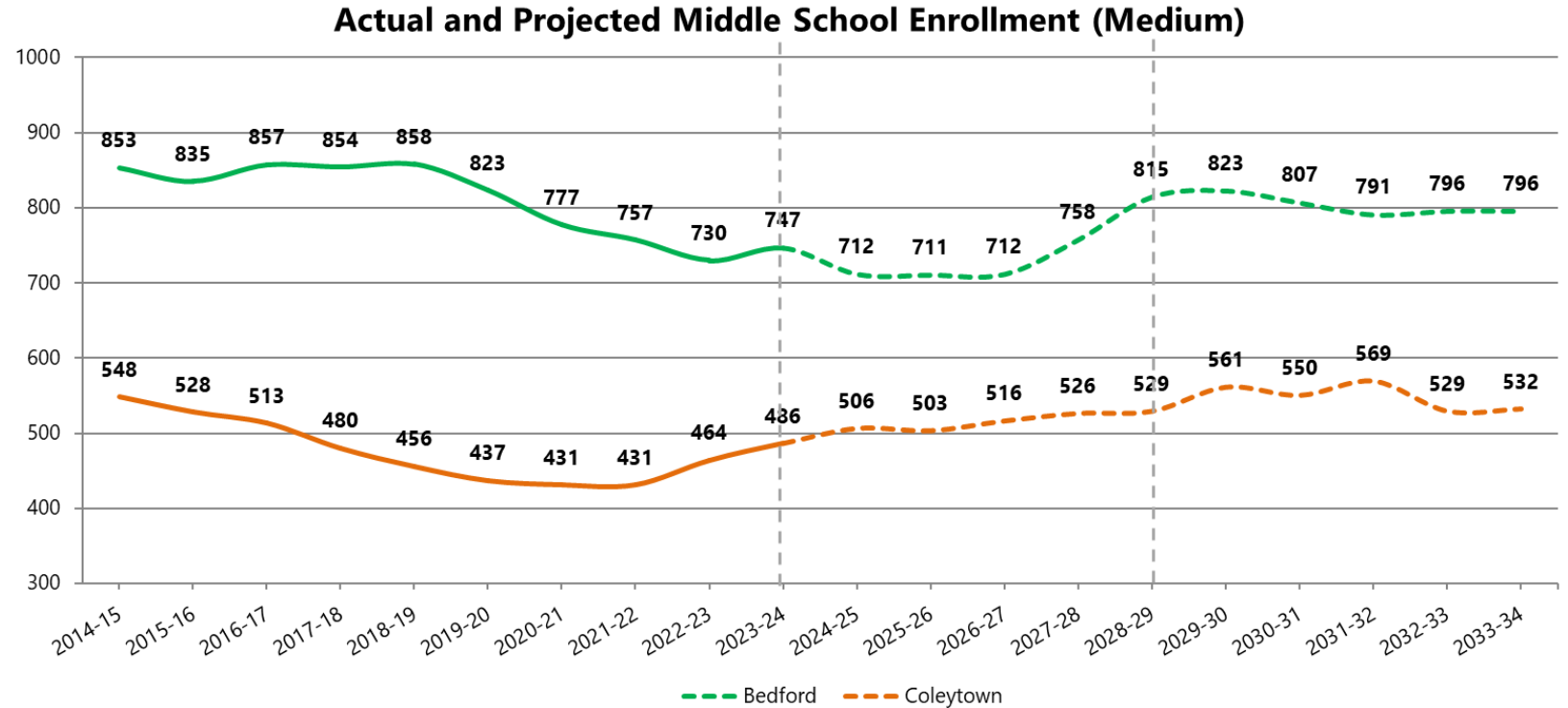
School	2023-24	2024-25	2025-26	2026-27	2027-28	2028-29	2029-30	2030-31	2031-32	2032-33	2033-34	First 5-Year % Change	10 year % Change
Coleytown	487	496	509	502	508	516	494	493	492	492	489	4.3%	0.4%
Greens Farms	472	481	497	495	488	486	475	475	473	474	472	3.4%	0.0%
Kings Highway	463	458	468	470	460	464	456	457	456	461	462	-0.6%	-0.2%
Long Lots	574	598	624	641	642	627	631	628	623	617	615	11.8%	6.7%
Saugatuck	398	395	398	391	384	380	386	388	386	388	390	-3.5%	-2.1%
K-5 Total	2,394	2,428	2,496	2,499	2,482	2,473	2,442	2,441	2,430	2,432	2,428	3.7%	1.4%

- Medium Model projections vary by school:
 - Long Lots is projected to have greatest growth in next 5-years, peaking in 2027-28 at 642 students
 - Coleytown is projected to grow by ~4 %, then average ~490 students
 - Greens Farms is projected to grow by over 3% in the first 5-years, peaking in 2025-26 at ~497students
 - Stable enrollment projected at King's Highway with students from future housing offsetting natural decrease in student population.
 - Saugatuck's enrollment is projected to decrease slightly over the next five years before stabilizing at ~390 students.



Middle School Projections (Medium)

- BMS is projected to average ~742 students the next 5-years
- BMS enrollment is projected to peak ~820 students from 2029-30 to 2030-31 due to successive “bubbles” of large 5th grade cohorts matriculating from Long Lots and Greens Farm (note due to decreased in-migration that size of bubbles is lower than last year’s projections).
- CMS is projected to grow slowly and average ~516 for the first 5-years & ~548 for the last 5 projected years





Projection Takeaways

- Projections revised downwards due to reduced housing sales and lower in-migration rates
- Medium Projection Model reflects the most likely trajectory for future enrollment. However, recent changes to enrollment drivers bear watching. Should housing market activity return to elevated levels, the High Projection Model may prove more accurate in the long-term
- Overall K-12 enrollment is projected to increase by ~3% over the next five years, then growth slows slightly for last 5-years; peaking in 2032-33 at ~5,600
- Elementary enrollments are projected to increase by ~4 % first 5-years, peaking in 2026-27 at ~2,500
- Largest growth at Long Lots (11.8%), Coleytown (4.3 %) and Greens Farms (3.4%) over next 5-years
- Middle school enrollment bottomed out in 2022-23, projected peak in 2029-30 at ~1,380 students
- CMS is projected to grow slowly, averaging 532 students over the next decade
- BMS is projected to experience continued growth, averaging 742 students the next 5-years, with enrollment “bubbles” pushing enrollment over ~820 by 2029-30.
- High school enrollment is projected to trough in 2025-26 at 1,619 students and then recover, reaching 1,838 students in 2033-34



10- Year Enrollment Projections (Update)

Appendix A Low, Medium & High Districtwide Projections



Appendix: Districtwide Projections Low

School Year	Birth Year	Low Births	K	1	2	3	4	5	6	7	8	9	10	11	12	PK	PK-12	K-12	K-5	6-8	9-12
2023-24	2018	153	392	395	428	413	368	398	421	386	426	391	409	406	423	54	5,310	5,256	2,394	1,233	1,629
2024-25	2019	138	350	418	409	437	416	370	407	416	386	430	383	402	410	67	5,301	5,234	2,400	1,209	1,625
2025-26	2020	173	364	373	432	417	440	418	379	402	416	390	421	377	406	67	5,302	5,235	2,444	1,197	1,594
2026-27	2021	191	363	387	385	440	419	441	427	374	401	419	381	413	380	98	5,328	5,230	2,435	1,202	1,593
2027-28	2022	201	367	387	400	393	443	421	451	422	374	406	412	376	418	98	5,368	5,270	2,411	1,247	1,612
2028-29	2023	181	362	390	399	407	395	444	430	445	421	378	397	404	379	98	5,349	5,251	2,397	1,296	1,558
2029-30	2024	171	358	386	403	407	410	397	454	425	445	426	371	391	408	98	5,379	5,281	2,361	1,324	1,596
2030-31	2025	176	359	381	398	410	409	411	405	448	424	450	417	364	394	98	5,368	5,270	2,368	1,277	1,625
2031-32	2026	178	361	383	393	405	412	410	419	399	447	429	440	410	367	98	5,373	5,275	2,364	1,265	1,646
2032-33	2027	179	362	385	396	400	407	413	418	414	399	453	421	433	412	98	5,411	5,313	2,363	1,231	1,719
2033-34	2028	180	362	385	397	402	402	408	421	413	413	404	443	413	435	98	5,396	5,298	2,356	1,247	1,695

1st 5-Year Change	1.1%	0.3%	0.7%	1.1%	-1.0%
2nd 5-Year Change	0.9%	0.9%	-1.7%	-3.8%	8.8%
10-Year Change	1.6%	0.8%	-1.6%	1.1%	4.1%



Appendix: Districtwide Projections Medium

School Year	Birth Year	Medium Births	K	1	2	3	4	5	6	7	8	9	10	11	12	PK	PK-12	K-12	K-5	6-8	9-12
2023-24	2018	153	392	395	428	413	368	398	421	386	426	391	409	406	423	54	5,310	5,256	2,394	1,233	1,629
2024-25	2019	138	363	421	412	440	419	373	410	419	389	433	386	405	413	67	5,350	5,283	2,428	1,218	1,637
2025-26	2020	173	373	390	439	424	446	424	384	408	422	396	428	383	412	67	5,396	5,329	2,496	1,214	1,619
2026-27	2021	191	364	399	406	450	429	451	436	382	410	428	390	423	389	98	5,455	5,357	2,499	1,228	1,630
2027-28	2022	201	368	391	416	417	456	434	465	434	385	418	424	388	432	98	5,526	5,428	2,482	1,284	1,662
2028-29	2023	181	362	394	407	427	422	461	446	462	436	392	412	419	394	98	5,532	5,434	2,473	1,344	1,617
2029-30	2024	185	364	389	411	418	433	427	475	444	465	445	387	408	427	98	5,591	5,493	2,442	1,384	1,667
2030-31	2025	190	365	391	404	421	423	437	439	472	446	474	438	383	414	98	5,605	5,507	2,441	1,357	1,709
2031-32	2026	192	365	392	406	414	426	427	449	436	475	455	467	434	389	98	5,633	5,535	2,430	1,360	1,745
2032-33	2027	194	366	392	409	416	419	430	439	447	439	485	449	463	440	98	5,692	5,594	2,432	1,325	1,837
2033-34	2028	195	367	392	407	418	421	423	442	437	449	448	478	444	468	98	5,692	5,594	2,428	1,328	1,838

1st 5-Year Change	4.1%	3.3%	3.7%	4.1%	2.0%
2nd 5-Year Change	2.9%	2.9%	-1.8%	-1.2%	13.7%
10-Year Change	7.2%	6.4%	1.4%	7.7%	12.8%



Appendix: Districtwide Projections High

High Districtwide Projections (Multipliers)

School Year	Birth Year	High Births	K	1	2	3	4	5	6	7	8	9	10	11	12	PK	PK-12	K-12	K-5	6-8	9-12
2023-24	2018	153	392	395	428	413	368	398	421	386	426	391	409	406	423	54	5,310	5,256	2,394	1,233	1,629
2024-25	2019	138	374	422	413	441	420	374	411	421	390	435	387	407	415	67	5,377	5,310	2,444	1,222	1,644
2025-26	2020	173	379	403	441	426	448	427	387	411	426	398	431	385	416	67	5,445	5,378	2,524	1,224	1,630
2026-27	2021	191	372	407	420	454	432	454	440	386	414	434	393	428	392	98	5,524	5,426	2,539	1,240	1,647
2027-28	2022	201	375	401	425	433	462	439	469	440	390	423	431	392	438	98	5,616	5,518	2,535	1,299	1,684
2028-29	2023	181	370	403	418	437	439	468	453	467	444	398	418	428	399	98	5,640	5,542	2,535	1,364	1,643
2029-30	2024	194	373	398	421	431	444	446	484	453	472	454	394	416	437	98	5,721	5,623	2,513	1,409	1,701
2030-31	2025	200	373	402	415	433	437	450	460	482	457	482	449	391	424	98	5,753	5,655	2,510	1,399	1,746
2031-32	2026	202	375	402	419	427	439	443	464	458	486	467	476	446	398	98	5,798	5,700	2,505	1,408	1,787
2032-33	2027	204	376	404	420	431	433	445	457	463	463	498	463	473	453	98	5,877	5,779	2,509	1,383	1,887
2033-34	2028	205	377	404	421	431	437	439	459	457	467	473	492	459	480	98	5,894	5,796	2,509	1,383	1,904
																1st 5-Year Change	5.8%	5.0%	5.9%	5.4%	3.4%
																2nd 5-Year Change	4.5%	4.6%	-1.0%	1.4%	15.9%
																10-Year Change	11.0%	10.3%	4.8%	12.2%	16.9%



10- Year Enrollment Projections (Update)

Appendix B Individual ES & MS School Projections



Appendix: ES (Low)

Westport Public Schools Elementary School Enrollment Projections 2024-25							
School	K	1	2	3	4	5	K-5th
Coleytown	71	94	75	79	91	77	487
Green's Farms	67	88	81	87	85	67	475
King's Highway	67	85	65	89	74	73	453
Long Lots	88	91	119	111	94	90	593
Saugatuck	57	60	69	71	72	63	392
TOTAL	350	418	409	437	416	370	2,400

Westport Public Schools Elementary School Enrollment Projections 2027-28							
School	K	1	2	3	4	5	K-5th
Coleytown	76	77	81	78	103	79	494
Green's Farms	71	75	78	78	93	83	478
King's Highway	70	71	72	75	90	71	449
Long Lots	93	101	104	100	98	121	617
Saugatuck	57	63	65	62	59	67	373
TOTAL	367	387	400	393	443	421	2,411

Westport Public Schools Elementary School Enrollment Projections 2030-31							
School	K	1	2	3	4	5	K-5th
Coleytown	73	75	80	83	83	84	478
Green's Farms	69	74	78	81	80	80	462
King's Highway	71	73	72	76	75	77	444
Long Lots	88	95	102	108	109	107	609
Saugatuck	58	64	66	62	62	63	375
TOTAL	359	381	398	410	409	411	2,368

Westport Public Schools Elementary School Enrollment Projections 2033-34							
School	K	1	2	3	4	5	K-5th
Coleytown	74	76	79	79	81	83	472
Green's Farms	69	74	77	79	79	79	457
King's Highway	72	74	74	78	76	76	450
Long Lots	89	97	102	102	103	106	599
Saugatuck	58	64	65	64	63	64	378
TOTAL	362	385	397	402	402	408	2,356

Westport Public Schools Elementary School Enrollment Projections 2025-26							
School	K	1	2	3	4	5	K-5th
Coleytown	74	74	99	76	82	93	498
Green's Farms	70	73	91	83	88	84	489
King's Highway	70	70	85	71	90	75	461
Long Lots	92	93	97	119	109	95	605
Saugatuck	58	63	60	68	71	71	391
TOTAL	364	373	432	417	440	418	2,444

Westport Public Schools Elementary School Enrollment Projections 2028-29							
School	K	1	2	3	4	5	K-5th
Coleytown	74	78	81	81	80	105	499
Green's Farms	70	76	77	80	78	92	473
King's Highway	70	71	70	76	74	90	451
Long Lots	89	101	108	106	101	99	604
Saugatuck	59	64	63	64	62	58	370
TOTAL	362	390	399	407	395	444	2,397

Westport Public Schools Elementary School Enrollment Projections 2031-32							
School	K	1	2	3	4	5	K-5th
Coleytown	73	75	78	80	85	85	476
Green's Farms	69	75	76	80	81	79	460
King's Highway	72	74	72	76	75	75	444
Long Lots	89	94	102	105	108	109	607
Saugatuck	58	65	65	64	63	62	377
TOTAL	361	383	393	405	412	410	2,364

Westport Public Schools Elementary School Enrollment Projections 2026-27							
School	K	1	2	3	4	5	K-5th
Coleytown	75	77	77	99	78	83	489
Green's Farms	70	76	75	93	84	87	485
King's Highway	69	72	69	90	70	90	460
Long Lots	92	97	100	99	119	111	618
Saugatuck	57	65	64	59	68	70	383
TOTAL	363	387	385	440	419	441	2,435

Westport Public Schools Elementary School Enrollment Projections 2029-30							
School	K	1	2	3	4	5	K-5th
Coleytown	72	76	82	81	83	81	475
Green's Farms	69	75	78	79	80	77	458
King's Highway	71	72	72	76	77	75	443
Long Lots	88	98	107	109	106	102	610
Saugatuck	58	65	64	62	64	62	375
TOTAL	358	386	403	407	410	397	2,361

Westport Public Schools Elementary School Enrollment Projections 2032-33							
School	K	1	2	3	4	5	K-5th
Coleytown	73	76	79	79	82	86	475
Green's Farms	69	75	77	79	80	80	460
King's Highway	73	75	74	77	76	76	451
Long Lots	89	94	101	102	104	109	599
Saugatuck	58	65	65	63	65	62	378
TOTAL	362	385	396	400	407	413	2,363



Appendix: ES (Medium)

Westport Public Schools Elementary School Enrollment Projections 2024-25							
School	K	1	2	3	4	5	K-5th
Coleytown	74	96	76	80	92	78	496
Green's Farms	69	88	82	88	86	68	481
King's Highway	68	85	66	90	75	74	458
Long Lots	95	92	118	111	93	89	598
Saugatuck	57	60	70	71	73	64	395
TOTAL	363	421	412	440	419	373	2,428

Westport Public Schools Elementary School Enrollment Projections 2027-28							
School	K	1	2	3	4	5	K-5th
Coleytown	76	78	84	82	107	81	508
Green's Farms	71	76	80	81	95	85	488
King's Highway	70	72	75	77	92	74	460
Long Lots	94	101	109	113	101	124	642
Saugatuck	57	64	68	64	61	70	384
TOTAL	368	391	416	417	456	434	2,482

Westport Public Schools Elementary School Enrollment Projections 2030-31							
School	K	1	2	3	4	5	K-5th
Coleytown	74	77	81	85	86	90	493
Green's Farms	70	77	79	83	82	84	475
King's Highway	72	75	73	78	77	82	457
Long Lots	90	97	104	111	113	113	628
Saugatuck	59	65	67	64	65	68	388
TOTAL	365	391	404	421	423	437	2,441

Westport Public Schools Elementary School Enrollment Projections 2033-34							
School	K	1	2	3	4	5	K-5th
Coleytown	74	77	83	84	85	86	489
Green's Farms	70	76	78	82	84	82	472
King's Highway	74	75	75	80	80	78	462
Long Lots	90	99	104	106	106	110	615
Saugatuck	59	65	67	66	66	67	390
TOTAL	367	392	407	418	421	423	2,428

Westport Public Schools Elementary School Enrollment Projections 2025-26							
School	K	1	2	3	4	5	K-5th
Coleytown	76	77	101	77	83	95	509
Green's Farms	71	75	92	85	89	85	497
King's Highway	72	71	86	72	91	76	468
Long Lots	94	103	99	121	111	96	624
Saugatuck	60	64	61	69	72	72	398
TOTAL	373	390	439	424	446	424	2,496

Westport Public Schools Elementary School Enrollment Projections 2028-29							
School	K	1	2	3	4	5	K-5th
Coleytown	74	79	83	85	85	110	516
Green's Farms	70	77	79	83	82	95	486
King's Highway	70	72	72	80	77	93	464
Long Lots	89	102	108	112	113	103	627
Saugatuck	59	64	65	67	65	60	380
TOTAL	362	394	407	427	422	461	2,473

Westport Public Schools Elementary School Enrollment Projections 2031-32							
School	K	1	2	3	4	5	K-5th
Coleytown	75	78	81	82	88	88	492
Green's Farms	69	76	80	82	84	82	473
King's Highway	72	75	75	78	78	78	456
Long Lots	90	97	104	106	111	115	623
Saugatuck	59	66	66	66	65	64	386
TOTAL	365	392	406	414	426	427	2,430

Westport Public Schools Elementary School Enrollment Projections 2026-27							
School	K	1	2	3	4	5	K-5th
Coleytown	75	79	81	102	80	85	502
Green's Farms	70	77	78	95	86	89	495
King's Highway	69	74	71	92	72	92	470
Long Lots	93	102	111	101	121	113	641
Saugatuck	57	67	65	60	70	72	391
TOTAL	364	399	406	450	429	451	2,499

Westport Public Schools Elementary School Enrollment Projections 2029-30							
School	K	1	2	3	4	5	K-5th
Coleytown	74	77	84	84	88	87	494
Green's Farms	71	76	80	82	84	82	475
King's Highway	72	73	73	78	81	79	456
Long Lots	89	97	109	110	112	114	631
Saugatuck	58	66	65	64	68	65	386
TOTAL	364	389	411	418	433	427	2,442

Westport Public Schools Elementary School Enrollment Projections 2032-33							
School	K	1	2	3	4	5	K-5th
Coleytown	74	78	83	82	85	90	492
Green's Farms	70	75	79	83	83	84	474
King's Highway	73	75	76	80	78	79	461
Long Lots	91	98	104	106	106	112	617
Saugatuck	58	66	67	65	67	65	388
TOTAL	366	392	409	416	419	430	2,432



Appendix: ES (High)

Westport Public Schools Elementary School Enrollment Projections 2024-25							
School	K	1	2	3	4	5	K-5th
Coleytown	76	96	76	80	92	78	498
Green's Farms	71	88	82	88	86	68	483
King's Highway	71	85	66	90	75	74	461
Long Lots	96	93	119	112	94	90	604
Saugatuck	60	60	70	71	73	64	398
TOTAL	374	422	413	441	420	374	2,444

Westport Public Schools Elementary School Enrollment Projections 2027-28							
School	K	1	2	3	4	5	K-5th
Coleytown	76	79	87	86	107	82	517
Green's Farms	71	77	82	84	97	86	497
King's Highway	73	75	76	81	94	74	473
Long Lots	95	103	112	114	103	127	654
Saugatuck	60	67	68	68	61	70	394
TOTAL	375	401	425	433	462	439	2,535

Westport Public Schools Elementary School Enrollment Projections 2030-31							
School	K	1	2	3	4	5	K-5th
Coleytown	75	79	85	87	88	95	509
Green's Farms	72	77	80	85	84	87	485
King's Highway	74	76	76	82	81	84	473
Long Lots	92	103	105	112	116	115	643
Saugatuck	60	67	69	67	68	69	400
TOTAL	373	402	415	433	437	450	2,510

Westport Public Schools Elementary School Enrollment Projections 2033-34							
School	K	1	2	3	4	5	K-5th
Coleytown	77	82	86	85	89	91	510
Green's Farms	71	76	80	85	85	84	481
King's Highway	75	76	76	82	82	82	473
Long Lots	92	103	110	112	112	113	642
Saugatuck	62	67	69	67	69	69	403
TOTAL	377	404	421	431	437	439	2,509

Westport Public Schools Elementary School Enrollment Projections 2025-26							
School	K	1	2	3	4	5	K-5th
Coleytown	78	79	102	77	83	95	514
Green's Farms	72	77	92	85	89	86	501
King's Highway	73	74	86	72	91	77	473
Long Lots	96	106	100	123	113	96	634
Saugatuck	60	67	61	69	72	73	402
TOTAL	379	403	441	426	448	427	2,524

Westport Public Schools Elementary School Enrollment Projections 2028-29							
School	K	1	2	3	4	5	K-5th
Coleytown	77	81	84	89	89	110	530
Green's Farms	70	78	80	86	85	97	496
King's Highway	72	76	75	82	81	95	481
Long Lots	91	101	111	112	115	105	635
Saugatuck	60	67	68	68	69	61	393
TOTAL	370	403	418	437	439	468	2,535

Westport Public Schools Elementary School Enrollment Projections 2031-32							
School	K	1	2	3	4	5	K-5th
Coleytown	77	79	84	86	90	91	507
Green's Farms	71	78	80	83	86	85	483
King's Highway	73	77	76	81	82	82	471
Long Lots	93	101	111	109	113	117	644
Saugatuck	61	67	68	68	68	68	400
TOTAL	375	402	419	427	439	443	2,505

Westport Public Schools Elementary School Enrollment Projections 2026-27							
School	K	1	2	3	4	5	K-5th
Coleytown	76	82	84	103	80	85	510
Green's Farms	71	79	80	96	86	89	501
King's Highway	72	76	74	93	72	92	479
Long Lots	94	102	114	102	124	116	652
Saugatuck	59	68	68	60	70	72	397
TOTAL	372	407	420	454	432	454	2,539

Westport Public Schools Elementary School Enrollment Projections 2029-30							
School	K	1	2	3	4	5	K-5th
Coleytown	76	79	85	85	92	91	508
Green's Farms	71	77	81	83	87	85	484
King's Highway	73	76	76	81	83	83	472
Long Lots	93	98	111	115	113	118	648
Saugatuck	60	68	68	67	69	69	401
TOTAL	373	398	421	431	444	446	2,513

Westport Public Schools Elementary School Enrollment Projections 2032-33							
School	K	1	2	3	4	5	K-5th
Coleytown	77	81	84	86	89	93	510
Green's Farms	70	77	82	84	84	86	483
King's Highway	74	76	78	82	81	83	474
Long Lots	95	102	108	111	110	115	641
Saugatuck	60	68	68	68	69	68	401
TOTAL	376	404	420	431	433	445	2,509



Appendix: MS (Low)

Westport Public Schools Middle School Enrollment 2024-25				
School	6	7	8	6-8th
Bedford	235	251	221	707
Coleytown	172	165	165	502
TOTAL	407	416	386	1,209

Westport Public Schools Middle School Enrollment 2025-26				
School	6	7	8	6-8th
Bedford	225	227	249	701
Coleytown	154	175	167	496
TOTAL	379	402	416	1,197

Westport Public Schools Middle School Enrollment 2026-27				
School	6	7	8	6-8th
Bedford	255	218	225	698
Coleytown	172	156	176	504
TOTAL	427	374	401	1,202

Westport Public Schools Middle School Enrollment 2027-28				
School	6	7	8	6-8th
Bedford	274	247	217	738
Coleytown	177	175	157	509
TOTAL	451	422	374	1,247

Westport Public Schools Middle School Enrollment 2028-29				
School	6	7	8	6-8th
Bedford	277	265	245	787
Coleytown	153	180	176	509
TOTAL	430	445	421	1,296

Westport Public Schools Middle School Enrollment 2029-30				
School	6	7	8	6-8th
Bedford	254	269	264	787
Coleytown	200	156	181	537
TOTAL	454	425	445	1,324

Westport Public Schools Middle School Enrollment 2030-31				
School	6	7	8	6-8th
Bedford	246	246	267	759
Coleytown	159	202	157	518
TOTAL	405	448	424	1,277

Westport Public Schools Middle School Enrollment 2031-32				
School	6	7	8	6-8th
Bedford	254	238	244	736
Coleytown	165	161	203	529
TOTAL	419	399	447	1,265

Westport Public Schools Middle School Enrollment 2032-33				
School	6	7	8	6-8th
Bedford	255	247	237	739
Coleytown	163	167	162	492
TOTAL	418	414	399	1,231

Westport Public Schools Middle School Enrollment 2033-34				
School	6	7	8	6-8th
Bedford	255	247	245	747
Coleytown	166	166	168	500
TOTAL	421	413	413	1,247



Appendix: MS (Medium)

Westport Public Schools Middle School Enrollment 2024-25				
School	6	7	8	6-8th
Bedford	237	252	223	712
Coleytown	173	167	166	506
TOTAL	410	419	389	1,218

Westport Public Schools Middle School Enrollment 2025-26				
School	6	7	8	6-8th
Bedford	228	230	253	711
Coleytown	156	178	169	503
TOTAL	384	408	422	1,214

Westport Public Schools Middle School Enrollment 2026-27				
School	6	7	8	6-8th
Bedford	260	222	230	712
Coleytown	176	160	180	516
TOTAL	436	382	410	1,228

Westport Public Schools Middle School Enrollment 2027-28				
School	6	7	8	6-8th
Bedford	282	253	223	758
Coleytown	183	181	162	526
TOTAL	465	434	385	1,284

Westport Public Schools Middle School Enrollment 2028-29				
School	6	7	8	6-8th
Bedford	287	275	253	815
Coleytown	159	187	183	529
TOTAL	446	462	436	1,344

Westport Public Schools Middle School Enrollment 2029-30				
School	6	7	8	6-8th
Bedford	266	281	276	823
Coleytown	209	163	189	561
TOTAL	475	444	465	1,384

Westport Public Schools Middle School Enrollment 2030-31				
School	6	7	8	6-8th
Bedford	268	258	281	807
Coleytown	171	214	165	550
TOTAL	439	472	446	1,357

Westport Public Schools Middle School Enrollment 2031-32				
School	6	7	8	6-8th
Bedford	272	261	258	791
Coleytown	177	175	217	569
TOTAL	449	436	475	1,360

Westport Public Schools Middle School Enrollment 2032-33				
School	6	7	8	6-8th
Bedford	268	266	262	796
Coleytown	171	181	177	529
TOTAL	439	447	439	1,325

Westport Public Schools Middle School Enrollment 2033-34				
School	6	7	8	6-8th
Bedford	268	262	266	796
Coleytown	174	175	183	532
TOTAL	442	437	449	1,328



Appendix: MS (High)

Westport Public Schools Middle School Enrollment 2024-25				
School	6	7	8	6-8th
Bedford	237	254	223	714
Coleytown	174	167	167	508
TOTAL	411	421	390	1,222

Westport Public Schools Middle School Enrollment 2025-26				
School	6	7	8	6-8th
Bedford	230	232	255	717
Coleytown	157	179	171	507
TOTAL	387	411	426	1,224

Westport Public Schools Middle School Enrollment 2026-27				
School	6	7	8	6-8th
Bedford	262	225	233	720
Coleytown	178	161	181	520
TOTAL	440	386	414	1,240

Westport Public Schools Middle School Enrollment 2027-28				
School	6	7	8	6-8th
Bedford	286	257	226	769
Coleytown	183	183	164	530
TOTAL	469	440	390	1,299

Westport Public Schools Middle School Enrollment 2028-29				
School	6	7	8	6-8th
Bedford	292	279	258	829
Coleytown	161	188	186	535
TOTAL	453	467	444	1,364

Westport Public Schools Middle School Enrollment 2029-30				
School	6	7	8	6-8th
Bedford	272	287	281	840
Coleytown	212	166	191	569
TOTAL	484	453	472	1,409

Westport Public Schools Middle School Enrollment 2030-31				
School	6	7	8	6-8th
Bedford	280	265	288	833
Coleytown	180	217	169	566
TOTAL	460	482	457	1,399

Westport Public Schools Middle School Enrollment 2031-32				
School	6	7	8	6-8th
Bedford	279	274	266	819
Coleytown	185	184	220	589
TOTAL	464	458	486	1,408

Westport Public Schools Middle School Enrollment 2032-33				
School	6	7	8	6-8th
Bedford	278	273	275	826
Coleytown	179	190	188	557
TOTAL	457	463	463	1,383

Westport Public Schools Middle School Enrollment 2033-34				
School	6	7	8	6-8th
Bedford	277	273	274	824
Coleytown	182	184	193	559
TOTAL	459	457	467	1,383