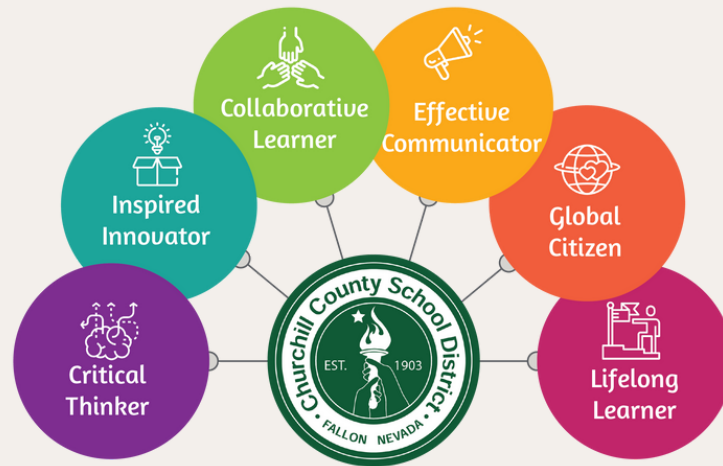


Churchill County School District



MISSION: *Everyone Always Learning*

VISION:

We will implement educational opportunities to:

- develop “life ready” learners;
- develop the whole person through intentional experiences that lead to engaged citizens; and
- formalize internal and external communication structures between students, teachers, leadership, families, and community to create effective engagement and collaboration.

BELIEFS:

- All people have inherently equal worth.
- All people can learn.
- Personalized learning supports individuals as they discover and develop their unique talents.
- Learning can be measured in different ways and occurs throughout life at different speeds, in various settings, with diverse methods.
- Individuals are responsible for the choices they make.
- High expectations inspire high performance.
- Personal effort is essential to achieve full potential.
- A community thrives when individuals support each other.
- Effective instruction and maximum achievement require a safe environment and teamwork among parents, school district employees, and students.
- Integrity and respect are essential in building trusting relationships.
- Embracing diversity strengthens and enriches our community.
- A nurturing, supportive family is uniquely important to a child’s healthy development.
- Character is an important component of instruction.

#AlwaysLearning