

# Trinity Area School District Middle School Additions and Alterations



Construction Update  
April 16, 2024



# Intermediate Addition – Front Entrance





# Intermediate Addition – West Elevation





# Intermediate Addition – South Elevation



# Intermediate Addition – South Elevation





# Intermediate Addition – South Elevation





# Intermediate Addition – East Elevation





# Intermediate Addition – East Elevation





# Intermediate Addition – East Elevation





# Intermediate Addition – East Elevation





# Intermediate Addition – Playground





# Intermediate Addition – Playground





# Intermediate Addition – Playground





# Intermediate Addition – 1<sup>st</sup> Floor - Corridor





# Intermediate Addition – 1<sup>st</sup> Floor - Classroom





# Intermediate Addition – 1<sup>st</sup> Floor – Project Classroom





# Intermediate Addition – 1<sup>st</sup> Floor - Toilet





# Intermediate Addition – 1<sup>st</sup> Floor - Office





# Intermediate Addition – 1<sup>st</sup> Floor – Conference Room





# Intermediate Addition – 1<sup>st</sup> Floor – Gymnasium



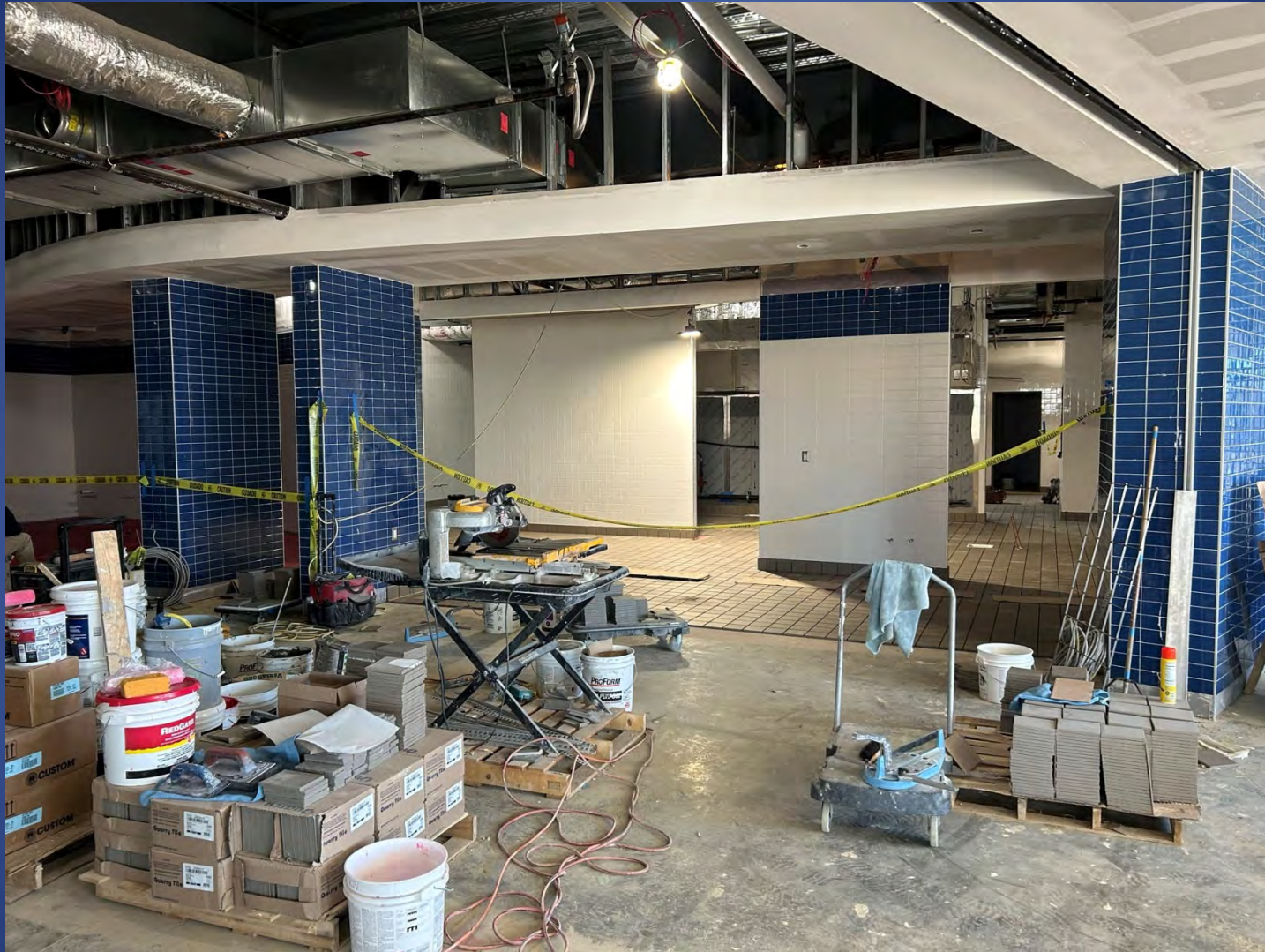


# Intermediate Addition – 1<sup>st</sup> Floor - Cafeteria





# Intermediate Addition – 1<sup>st</sup> Floor – Serving Area/Kitchen





# Intermediate Addition – 1<sup>st</sup> Floor – Kitchen





# Intermediate Addition – Stairway





# Intermediate Addition – 2<sup>nd</sup> Floor - LGI





# Intermediate Addition – 2<sup>nd</sup> Floor – Corridor Storage





# Intermediate Addition – 2<sup>nd</sup> Floor – Instrument Storage





# Intermediate Addition – 2<sup>nd</sup> Floor – Music Room





# Intermediate Addition – 2<sup>nd</sup> Floor - Corridor





# Intermediate Addition – 2<sup>nd</sup> Floor – STEAM Room





# Intermediate Addition – 2<sup>nd</sup> Floor – Media Center





# Intermediate Addition – 2<sup>nd</sup> Floor - Corridor





# Intermediate Addition – 2<sup>nd</sup> Floor - Corridor





# Intermediate Addition – 2<sup>nd</sup> Floor - Corridor





# Intermediate Addition – 2<sup>nd</sup> Floor – Project Classroom





# Intermediate Addition – 2<sup>nd</sup> Floor – Learning Support





# Intermediate Addition – 3<sup>rd</sup> Floor - Corridor





# Intermediate Addition – 3<sup>rd</sup> Floor – Project Classroom





# Intermediate Addition – 3<sup>rd</sup> Floor - Corridor





# Intermediate Addition – 3<sup>rd</sup> Floor – Hearing Room





# Intermediate Addition – 3<sup>rd</sup> Floor – Landing Area





# Intermediate Addition – Water Feature Wall



# Athletic Addition – Roof Overflow Drains





# Overall Progress

## Upcoming Work

- Composite metal panel installation ongoing at exterior.
- Elevator installation started.
- Area K ceiling tile, flooring, electric devices, plumbing fixtures, & casework ongoing.
- Areas H&J 2<sup>nd</sup> Floor: Drywall, ceilings and painting finishing up.
- Areas H&J 1<sup>st</sup> Floor: Ceiling rough-ins for gym. Ceramic tile in kitchen/cafeteria ongoing. Ceilings and equipment next!
- Playground work underway.
- Exterior signage to start.



## Project Stats

- Safety = 216 Days with Zero Recordable Accidents

## Project Schedule

- Project is on pace to be turned over August 2024