

INTERNATIONAL EDUCATION & SUSTAINABILITY LEADERSHIP SUMMIT 18-20 April 2024

HOSTED BY
INTERNATIONAL
SCHOOL OF
LUXEMBOURG



Regenerative Leadership - Collaborative Action - Sustainable Impact

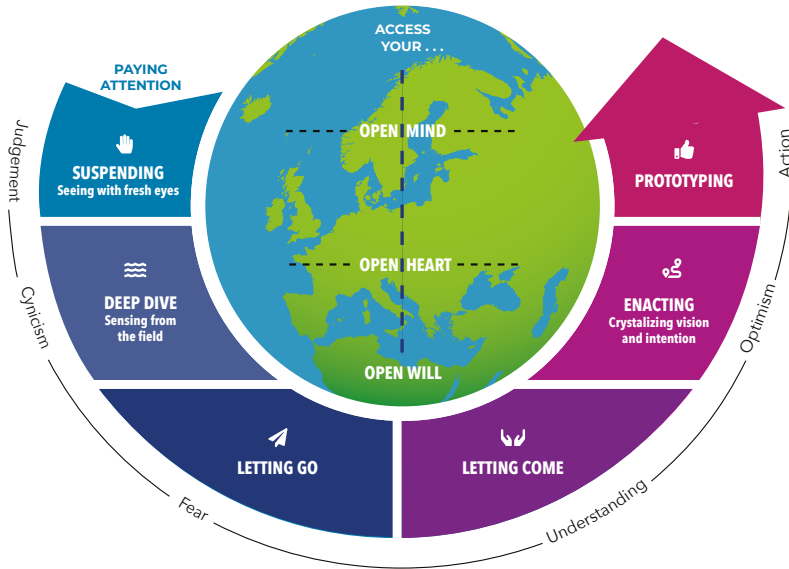
CONCEPTUAL UNDERSTANDINGS

- We all have responsibilities as planetary citizens, because we are all interconnected in a diverse global ecosystem.
- Systems thinking helps us grasp our interdependence and interconnectedness and navigate the complexities of change.
- System pressure trends tell us that the unprecedented poly-crisis that humanity faces has social, economic, political, environmental and educational dimensions.
- Maintaining a conscious focus on diversity, equity and individual and collective wellbeing, as an essential part of creating sustained impact over time.
- Leadership happens at every level of a school. Leaders can be the designers, stewards and teachers of an education focused on sustainability.
- Education for a sustainable world will need to equip learners of all ages with specific skills and competencies, using transformational pedagogy.

OBJECTIVES

- Reimagine our moral purpose: Explore redefining moral purpose in education locally, regionally, and globally for sustainability.
- Spark sustainability thinking: Embrace sustainability and systems thinking to ignite minds and kindle hearts.
- Critically assess the role of education: Be critical, compassionate, and courageous in evaluating education's role past, present and future for sustainability.
- Understand organizational responses: Examine sustainability positions of various sectors- business, industry, government, and development.
- Create action networks: Establish networks for agency and connected action towards sustainable education.
- Optimize leadership impact: Explore the role of regenerative leadership at all education levels for sustainable practices.
- Forge impactful futures: Understand strategies to create sustained impact over time in education for a better future.

Andragogy based on Otto Scharmer's "Theory U"



Each day of the summit is dedicated to a particular theme.

THEME FOR DAY 1: The Challenge We Face

THEME FOR DAY 2: Meeting the Challenge

THEME FOR DAY 3: A Call to Action

Our shared learning across the summit will propel us forward in terms of our understanding, appreciation and application of a regenerative leadership approach to taking collaborative action leading to sustainable impact.

PROGRAMME



Thursday 18 April

DAY 1

*Please note that the programme content might be subject to change.

The Challenge We Face

Paying Attention

11h30 - 12h00	Registration - Coffee, Orientation <i>Lunch provided if pre-booked*</i>	Registration: LS Parent Area in Reception Lunch: US Cafeteria
12h00 - 12h45	1.1 Welcome, Introductions & Purpose of Summit Aim: To introduce participants to each other, to the programme, U Theory, and the programme faculty Facilitators: SusEd & ISL faculty & students Other topics: GDPR, Safeguarding, housekeeping, security, evacuation Facilitator: ISL staff member	LS Auditorium
12h45 - 13h45	1.2 Spotlight Session (i): THE GLOBAL CONTEXT Facilitators: Richard Calland + Jessica Hayduk Aim: To provide a high-level overview of key system characteristics, system pressures and trends, and an update on the causal interconnectedness of the climate crisis. 45' interactive presentation on the system pressures and trends, covering headlines on great acceleration, demographics, food-energy-water nexus, environmental degradation, social challenges and climate change. 15' Q&A	LS Auditorium

13h45 - 14h00	BREAK	Hillside MPR
14h00 - 15h00	<p>1.3 LEADERSHIP ACTION GROUPS (LAG) (i) The aim of LAG is to provide:</p> <ul style="list-style-type: none"> • A safe space in which delegates can reflect openly about their challenges, views and assumptions for the future. • Peer and Faculty coaching, to help each other advance our thinking on the individual and education leadership questions prompted by the summit. • This is an opportunity for delegates to get to know each other and start to think about, articulate and reflect on, their personal and professional journeys. <p>Facilitators: Programme Faculty</p>	<p>LAG #1 A.101 LAG #2 A.102 LAG #3 A.103 LAG #4 A.104 LAG #5 A.108 LAG #6 A.111 LAG #7 A.118 LAG #8 U.101</p> <p>LAG spare U.102 LAG spare U.103 LAG spare U.104</p>
15h00 - 15h15	BREAK	Hillside MPR
15h15 - 16h30	<p>1.4 Spotlight Session (ii): SYSTEMS THINKING FOR SUSTAINABILITY An opportunity for delegates to critically engage with systems.</p> <ul style="list-style-type: none"> • How to understand, embrace and dance with the systems around us • How do we find leverage in the systems around us to be a Changemaker? • What can we change? What gets in our way with systems? <p>Facilitator: Mike Johnston</p>	LS Gymnasium
16h30 - 17h45	Pre-Symposium Dinner	US Cafeteria
18h00 - 20h00	<p>1.5 ISL Symposium - "Regenerative Leadership & Sustainability" The latest in a series of public symposia organised by ISL. A panel of experts engaged in dynamic discussion with interactive Q & A. Conversation moderated by Phil Keech, Head of Sustainability, ISL. Followed by refreshments & networking opportunities.</p> <p>Panellists:</p> <ul style="list-style-type: none"> • Dr. Claudia Hittaj, Advisor at the Luxembourg Ministry of the Environment, Climate, and Biodiversity • Dr. Ariane König, Senior Researcher at the University of Luxembourg in the field of sustainability science and transformative social learning • Dr Anton Béguin, Director of Educational Innovation at IB • Prof. Richard Calland, Cambridge Institute for Sustainability Leadership 	LS Auditorium

PROGRAMME



Meeting the Challenge

THE ROLE AND RESPONSIBILITY OF EDUCATION:

Opening our mind, heart and will – Re-visioning and Re-aligning

08h30 – 09h00	2.1 ROADMAP AND REFLECTION - Check-in with Theory U Aim: To prepare the group for the day ahead "Our blind spots" Fire Starter by ISL student	US Auditorium
09h00 – 09h45	2.2 Spotlight Session (iii): IS EDUCATION PART OF THE PROBLEM? Facilitators: Andrew Watson & Students with Phil Keech (Head of Sustainability) Provocation on the international education narrative; leadership, the International Baccalaureate, the SusEd "Meta Campus", and Nature Based Learning, Schoolwide Sustainability.	US Auditorium
09h45 – 10h45	2.3 LEADERSHIP ACTION GROUPS (LAG) (ii) <ul style="list-style-type: none">• Exploring education as part of the problem - and part of the solution• Investigating the relationship between systems, sustainability, wellbeing and learning.	LAG #1 A.101 LAG #2 A.102 LAG #3 A.103 LAG #4 A.104 LAG #5 A.108 LAG #6 A.111 LAG #7 A.118 LAG #8 U.101 LAG spare U.102 LAG spare U.103 LAG spare U.104
10h45 – 11h00	BREAK	Hillside MPR

11h00 – 13h00	<p>2.4i STORIES THAT MOVE Leadership perspectives from Business, Industry, Education and Development Sectors.</p> <p>World Café: An interactive opportunity for delegates to actively listen to and question approaches to sustainability thinking from different perspectives. Sector leaders each have 7-10 minutes to tell their story. Sector leaders are encouraged to focus on regenerative economics. The quick-fire presentations should identify problems and opportunities presented by the climate crisis. After the “elevator pitch”, sector leaders move to breakout spaces to engage in critical and compassionate conversations with small groups of delegates.</p> <p>The aims of this and the following session:</p> <ul style="list-style-type: none"> • To “quieten our cleverness” and listen openly to the challenges facing leadership across sectors • To critically and constructively challenge leadership • To understand the interdependence of different sectors • To imagine better ways of doing things. 	US Auditorium and LAG Venues
13h00 – 13h45	LUNCH	US Cafeteria
13h45 – 14h45	<p>2.4ii STORIES THAT MOVE (ii) World Café: continues</p>	LAG Venues
14h45 – 15h00	BREAK	US Cafeteria
15h00 – 16h00	<p>2.5 LEADERSHIP ACTION GROUPS (LAG) (iii) Lessons from Leadership: Should we mow the lawn? Exploring the complexity of sustainable decision making.</p>	LAG Venues
16h00 – 17h00	<p>2.6 MAKE A DIFFERENCE – SUSTAINABLE INNOVATION Innovative approaches to storytelling, sustainability, service and experiential learning. Facilitator: MAD www.madcourses.com</p>	US Auditorium
17h00 – 19h00	<p>2.7 (i) STUDENT SOCIAL FORUM Facilitator: Alexei du Bois</p> <p>2.7 (ii) TEACHERS, ADMINISTRATORS & SECTOR LEADERS SOCIAL FORUM Facilitator: Richard Calland</p>	U.001 Drama Room US Auditorium
19h00 – 21h00	<p>DINNER Gudden Appetit! Enjoy our Luxembourgish menu. Click here for the dinner menu (including the authentic Luxembourgish recipes)</p>	US Cafeteria

PROGRAMME



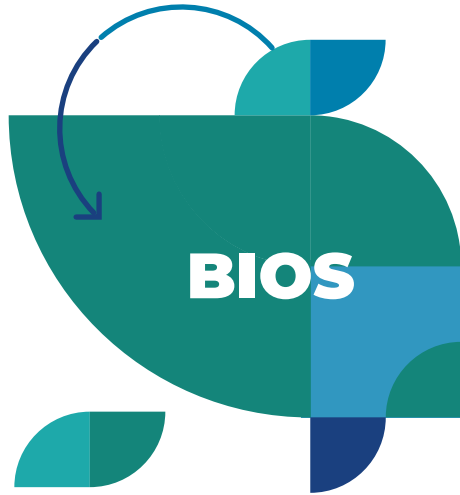
Saturday 20 April

DAY 3

A Call to Action

What is my work?

08h30 – 09h00	3.1 ROADMAP AND REFLECTION - Check-in with Theory U Aim: To prepare the group for the day ahead	US Auditorium
09h00 – 10h00	3.2 STUDENT FORUM FEEDBACK Feedback to plenary from students Facilitator: Alexei du Bois Format: A youth panel of experts, with provocative/challenging suggestions and feedback to plenary.	US Auditorium
10h00 – 10h30	BREAK	US Cafeteria
10h30 – 11h30	3.3 BACK CASTING: WHAT DO WE NEED TO DO NOW TO GET WHERE WE NEED TO BE? LEADERSHIP ACTION GROUPS (LAG) (iv) Who do we need to be? Plotting the changemaker canvas.	LAG Venues
11h30 – 12h00	SNACK BREAK	US Auditorium
12h00 – 13h30	3.4 WHAT NOW? (AKA: The most important bit!) In school groups, business teams, and gatherings of individuals, reflecting on what we have learned through summit about: <ul style="list-style-type: none">• Regenerative Leadership• Collaborative Action• Sustainable Impact Deciding how we are going to think, speak and act differently from World Earth Day, Monday 22 April 2024. Sharing commitments to action in plenary.	LAG Venues (tbc) followed by US Auditorium
13h30 – 14h00	CLOSING REMARKS: ISLux Students / Circle of delegates	US Auditorium



[CLICK FOR MORE INFORMATION ABOUT
SuSED & ISL FACULTY AND LAG FACILITATORS](#)

SuSED FACULTY

Qamaruzzaman Amir
Alexei du Bois
Richard Calland
Alex Catallo
Mike Johnston
Tanisha Muqtada
Andrew Watson
Shamayim Watson
Emma van der Vliet

LEADERSHIP ACTION GROUP FACILITATORS

Michael A. Brittingham II
Cyrille Calmels D'Artansac
Alisha Dang
Lou Duren
Alexander Hals
Helen Harman
Jessica Hayduk
Krisztian Horvath
Daniela Garcia Moreno

Gail Keech
Philip Keech
Fabien Moussay
Ailbhe O'Flaherty
Maria Pawelek