

AI GUIDANCE FOR TEACHERS



Please be clear with students about the extent to which AI tools can be used based on what is (and what is not) being assessed. Look for opportunities for the creative use of AI tools like *Magic School* without impacting your ability to assess discrete learning outcomes.



Do's



Don'ts



Prioritize Process

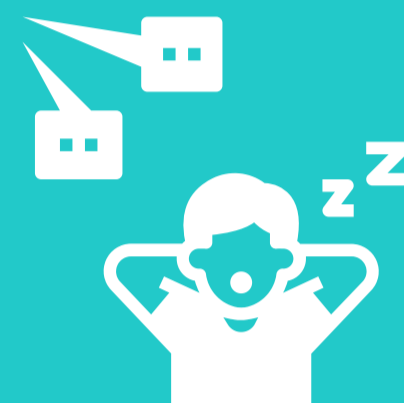
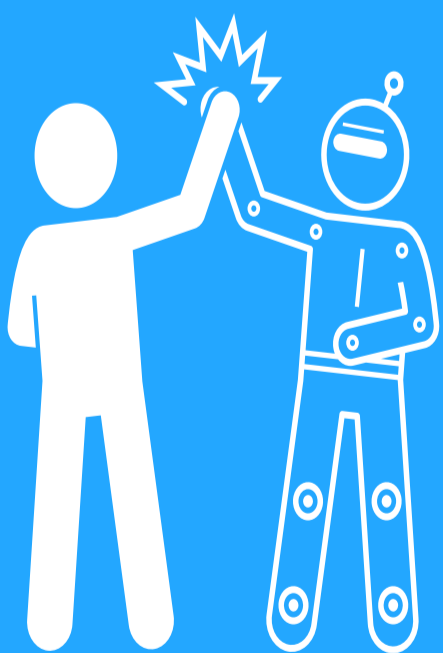
Many of the tasks we ask students to do can be done in seconds by AI. More frequent check-ins, increasing formative feedback, and tracking progress digitally can help focus on the process over the product.

Remain Relevant

Tap into current events and topics/events that are personal to students. Base tasks on student's lived experiences. Use current resources and texts that AI is less familiar with (for now!).

Leverage AI

- Use *Magic School Student* to share and curate AI tools to support the learning process.
- Ask AI to complete an assessment. Then, show it to the class and have them score it, improve it, and/or pick it apart.
- Run an old assessment through AI. Ask it for an AI-friendly update.
- Work with the IT Team to make a "Bot." Students can interview and get feedback from anyone who ever lived. You can even make a "bot" of yourself!
- Reach out to the IT Team about piloting AI-based units. This is already underway!



Don't Ignore It

We are confident in our belief that generative AI is here to stay and will only grow more powerful. Ignoring it means we are creating an AI skills gap that will disadvantage our students.

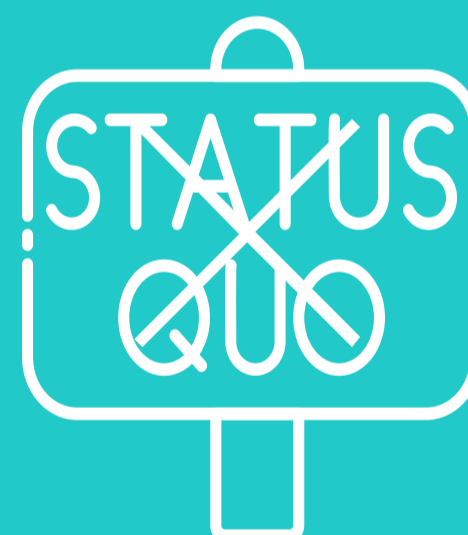
Don't Ban It

There are times when we may need to assess in analog, be clear where AI tools are not allowed, and ensure digital safety. That said, blanket "bans" are not in line with our approach to AI.



Don't Stagnate

If students can use an AI tool to complete an assessment it's not the AI or students' fault, it's the assessment! Let's create new and different ways for students to show what they know. This includes **UDL** strategies and AI integration.



Don't Go Solo

We can do a lot regarding AI in the classroom. Some things we cannot do are ask students to sign up for AI platforms other than *Magic School* without being part of a pilot or hold different AI expectations than departments or teaching partners.



Where are all of our AI Resources?
<https://www.nischina.org/ai>
Check them out!