



www.joshuaisd.org/bond2024





LONG-RANGE PLANNING PROCESS



Reviewed district-wide historic and future enrollment projections



Assessed campus and departmental needs



Gathered feedback from a Future Planning Committee made up of admin, staff, and community members



A recommendation was made to the Board of Trustees on February 16, 2024



Board of Trustees called a bond in the amount of \$106,246,000

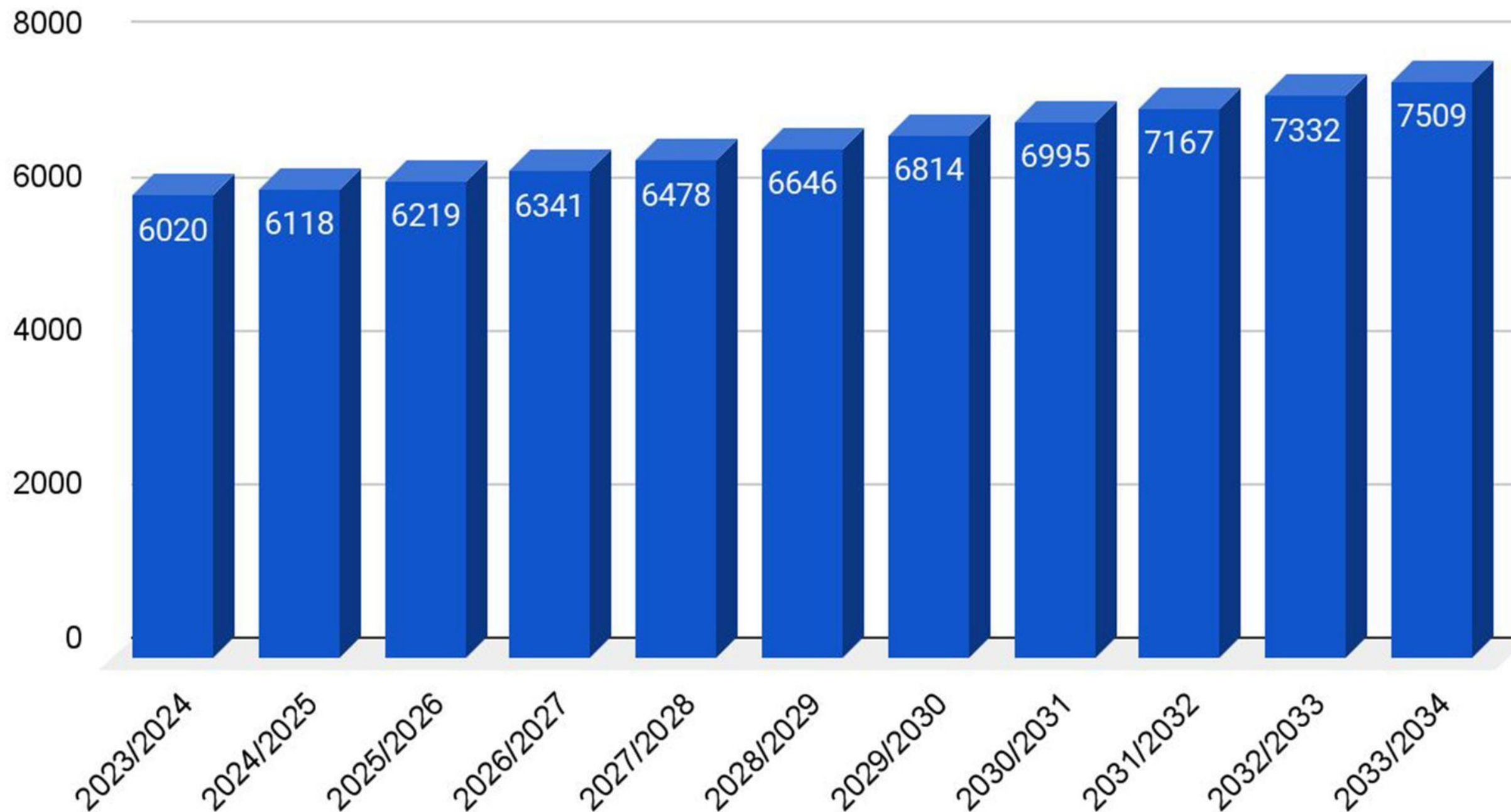


Election day is Saturday, May 4, 2024



JOSHUA ISD IS GROWING

Enrollment Growth



Zonda Education conducted a demographic study for the district projecting Joshua ISD to enroll more than 6,400 students by 2027/28, and approximately 7,000 students by the 2031/32 school year.

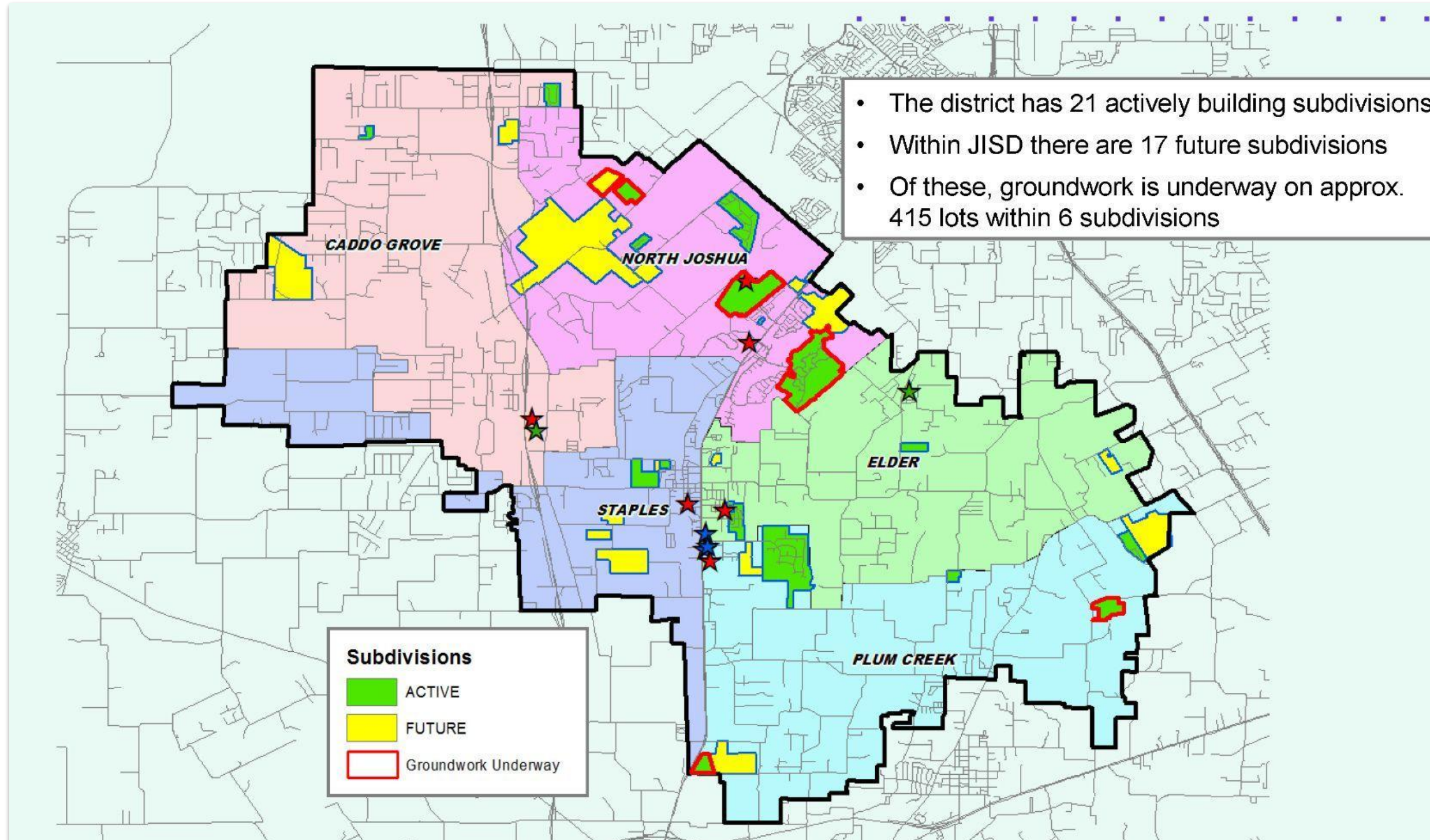
In addition, Elder and North Joshua Elementary are currently exceeding capacity, with North Joshua projected to exceed capacity by approximately 315 students in the 2032/33 school year.



JISD ENROLLMENT PROJECTION

		Fall	Enrollment Projections									
Campus	Capacity	2023/24	2024/25	2025/26	2026/27	2027/28	2028/29	2029/30	2030/31	2031/32	2032/33	2033/34
A.G. Elder Elementary	608	666	677	693	706	722	734	743	753	759	767	776
Caddo Grove Elementary	646	626	630	648	661	674	692	714	738	759	780	805
H.D. Staples Elementary	532	428	445	457	472	482	491	499	505	514	522	531
North Joshua Elementary	703	718	743	773	806	839	873	911	945	980	1,018	1,058
Plum Creek Elementary	627	448	466	480	499	524	554	582	611	638	653	669
ELEMENTARY TOTALS	3,116	2,886	2,961	3,051	3,144	3,241	3,344	3,449	3,552	3,650	3,740	3,839
Elementary Percent Change		2.96%	2.60%	3.04%	3.05%	3.09%	3.18%	3.14%	2.99%	2.76%	2.47%	2.65%
Elementary Absolute Change		83	75	90	93	97	103	105	103	98	90	99
R.C. Loflin Middle School	1,181	726	721	703	708	724	743	758	779	801	824	849
Nichols Middle School	700	603	634	673	705	715	729	745	759	771	782	792
MIDDLE SCHOOL TOTALS	1,881	1,329	1,355	1,376	1,413	1,439	1,472	1,503	1,538	1,572	1,606	1,641
Middle School Percent Change		-0.52%	1.96%	1.55%	2.69%	1.84%	2.29%	2.11%	2.33%	2.21%	2.16%	2.18%
Middle School Absolute Change		-7	26	21	37	26	33	31	35	34	34	35
Joshua 9th Grade Center	699	478	467	478	472	491	500	511	519	534	545	557
Joshua High School	1,411	1,298	1,301	1,279	1,279	1,273	1,296	1,317	1,352	1,377	1,407	1,438
New Horizon High School	100	29	34	35	33	34	34	34	34	34	34	34
HIGH SCHOOL TOTALS	2,210	1,805	1,802	1,792	1,784	1,798	1,830	1,862	1,905	1,945	1,986	2,029
High School Percent Change		2.62%	-0.17%	-0.54%	-0.48%	0.80%	1.78%	1.73%	2.32%	2.10%	2.10%	2.17%
High School Absolute Change		46	-3	-10	-9	14	32	32	43	40	41	43
DISTRICT TOTALS	7,207	6,020	6,118	6,219	6,341	6,478	6,646	6,814	6,995	7,167	7,332	7,509
District Percent Change		2.07%	1.63%	1.66%	1.95%	2.16%	2.59%	2.52%	2.66%	2.46%	2.30%	2.41%
District Absolute Change		122	98	101	121	137	168	168	181	172	165	177

JISD HOUSING DEVELOPMENTS

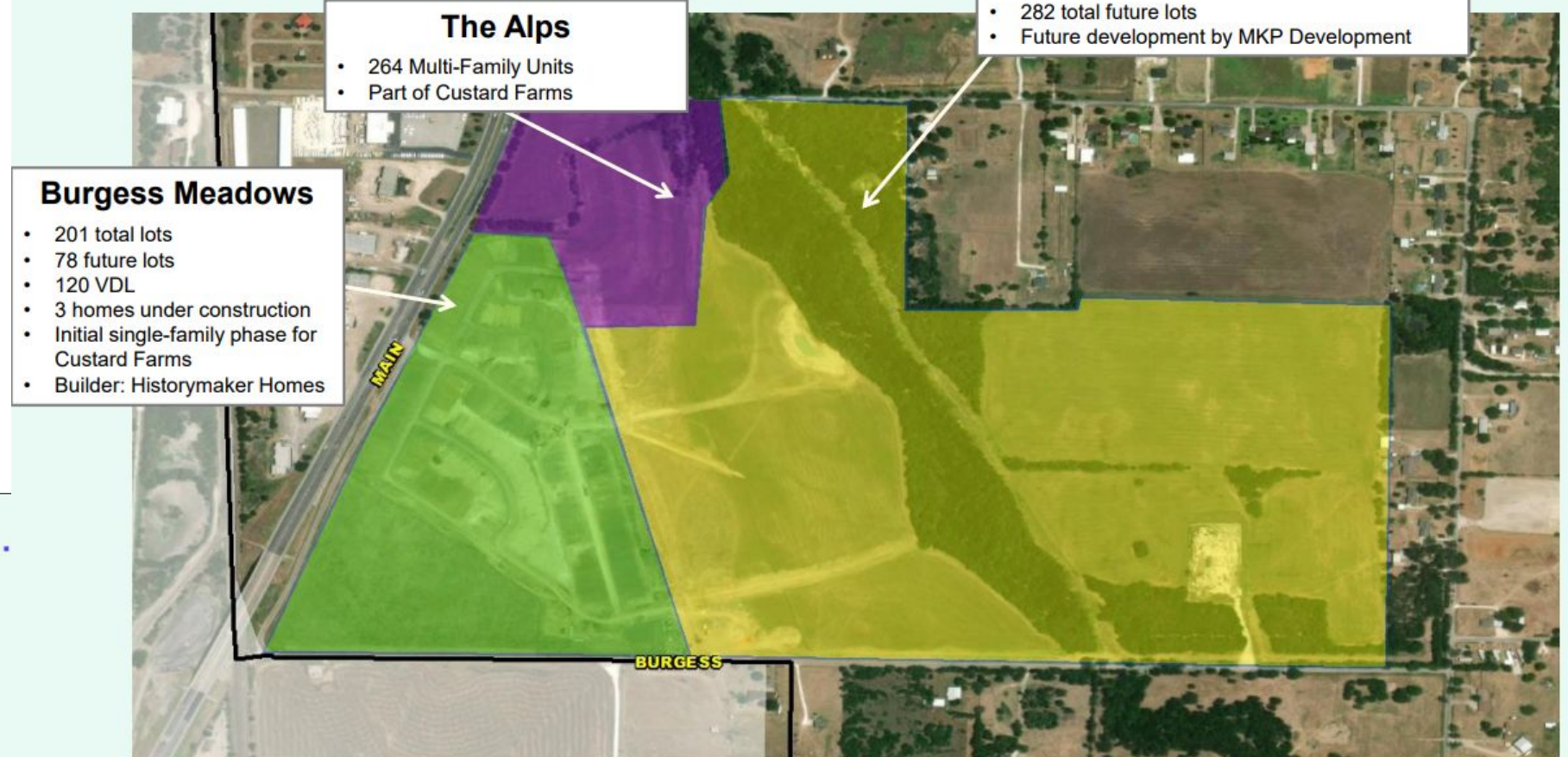


JISD has roughly 120 homes currently in inventory with 500 additional lots available to build on.

JISD HOUSING DEVELOPMENTS



Residential Activity



October 2023



Residential Activity

The Parks at Panchasarp Farms

- 811 total lots
- 583 future lots
- 42 vacant developed lots
- 19 homes under construction
- 157 occupied homes





BOND SCOPE

Proposition A | \$63.1M

Construction of a new elementary school and an addition to Nichols Middle School to have more classrooms for growth

Proposition B | \$8.9M

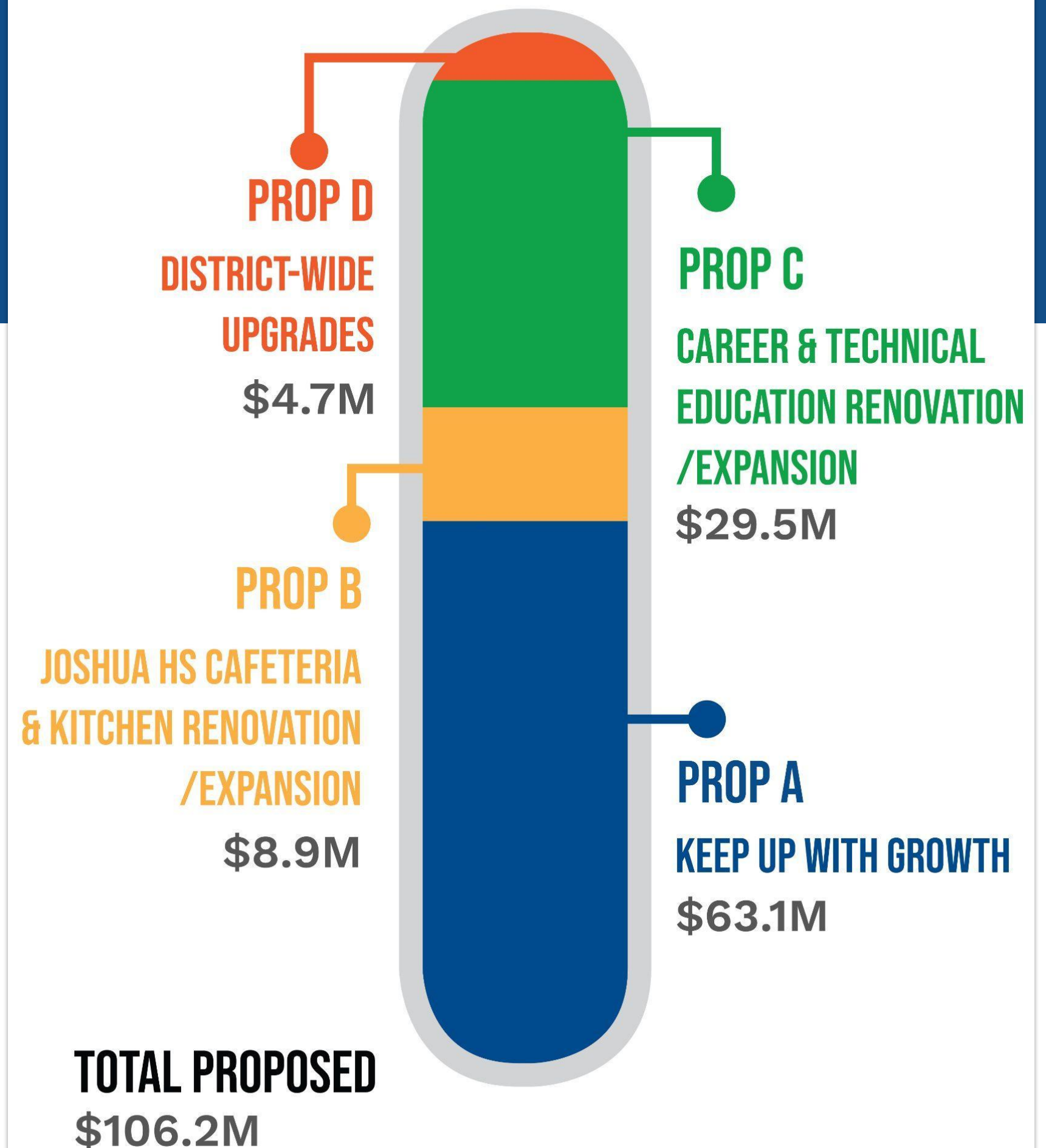
Renovation and expansion updates to the cafeteria and kitchen at Joshua High School

Proposition C | \$29.5M

26,000 square-foot renovation and a 31,000 square-foot addition of the Career and Technical Education facility at Joshua High School

Proposition D | \$4.7M

HVAC replacements, paving improvements at multiple campuses and safety and security upgrades





BOND SCOPE - Proposition C

Proposition C | \$29.5M

26,000 square-foot renovation and a 31,000 square-foot addition of the Career and Technical Education facility at Joshua High School

- Prepare for further education and careers in current or emerging professions.
- Replacing outdated equipment
- Updated spaces for CTE Courses (Culinary, Cosmetology, Construction, Health Sciences, Audio Visual, Engineering, Computer Sciences, Teacher Training, Marketing/Business/Accounting and Criminal Justice)





BOND SCOPE - Proposition C

CTE Impact

- 16 CTE Pathways
- 14 Industry-Based Certifications
- Currently some CTE classrooms are in the main HS building. With the expansion, these classrooms will move to the CTE Wing; therefore providing additional classrooms for growth.
- Students utilize use IBC's (Industry Based Certifications) to identify certifications that prepare them for success in the workforce, military, or postsecondary education.





BOND SCOPE - Proposition C



Parent Notice: Lottery System for CTE Pathways as needed

Eighth-grade students will submit their top three pathway choices through an interest form provided by their Careers class teacher.

If a pathway receives more requests than its available capacity, the students selected to enroll in that pathway will be chosen through a lottery draw. To be eligible for the lottery draw, students must ensure that they submit their interest form by the specified deadline.

Only students who have listed the pathway as their first choice will be eligible to participate in that pathway's lottery. In the event that a student does not secure their first choice, they will be automatically assigned to their second choice pathway unless that particular pathway is already at total capacity; in that case, they will be assigned to their third choice. If all three pathways are at capacity, the student will meet individually with their counselor to determine placement.

A random name generator will determine the recipients for available spaces in the pathway. The Lottery Committee, consisting of at least 3 individuals, will gather after the submission deadline to validate the lottery.

Students will receive notification of their chosen pathway and subsequent endorsement for graduation before course selections occur. The student will have their Four Year Plan to review with their Parent/Guardian, sign, and return to their Careers class teacher.

Additional space in CTE classes can be taken by any student with appropriate prerequisites as an elective, but priority will be given to students within the pathway.



CAREER READY





Register to Vote by
April 4



Early Voting is
April 22 - April 30



Election Day is
Saturday, May 4



Visit **www.joshuaisd.org/bond2024**
for voting times and locations

COMMUNITY INFORMATIONAL MEETINGS

Facebook Lives

- April 18 | 5 p.m. | Prop. D & School Finance

Town Hall

- April 17 | 6 p.m. | JISD Administration Building



Joshua ISD



QUESTIONS?

