



Spring School Campus Safety Reminders

Dear Pine-Richland Students, Staff, Families and Community Members:

As we transition into the spring season and warmer weather, the district would like to take another opportunity to remind our families and community of important safety measures that have been put into place over the past few years.



Access to School Properties & Facilities

Public access to school properties and facilities **during school hours is prohibited**. The challenge is balancing the use of facilities by the public while maintaining a safe and secure learning environment for our students and staff during the school day. The topic is most frequent at the secondary and Richland Elementary campuses due to the availability of facilities such as the tracks and tennis courts.

The administration, school resource officer and the district's safety and security coordinators have been working with the Northern Regional Police Department regarding enforcement and have installed appropriate signage on all six campuses.

Public access on the Pine-Richland School District campuses will be prohibited during school hours:

- **Pine-Richland High School Hours:** 6:45 am - 2:45 pm
- **Pine-Richland Middle School Hours:** 6:45 am - 2:45 pm
- **Eden Hall Upper Elementary School Hours:** 7:15 am - 3:45 pm
- **Hance Elementary School Hours:** 8:00 am - 4:30 pm
- **Richland Elementary School Hours:** 8:00 am - 4:30 pm
- **Wexford Elementary School Hours:** 8:00 am - 4:30 pm

Santacroce Stadium at Richland Elementary School will be available during school hours as long as there are no athletic or school day programs taking place.

The high school stadium, RAM Cage and Santacroce will be available to the public after school hours as long as there are no athletic or evening programs.

Elementary playgrounds, Richland Elementary tennis courts, Pine-Richland High School Stadium and Pine-Richland High School tennis courts will be restricted during school hours but available during the evening hours as long as there are no athletic or school day programs taking place.

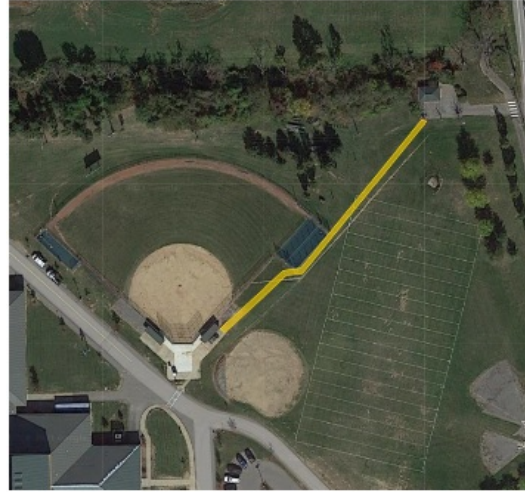
Northern Regional Police Department Partnership

In collaboration with the Northern Regional Police Department, **we are introducing their new K-9 (dog) to our campuses. This K-9 is trained for bomb sniffing.**

The officers will be bringing the dog into our buildings both during and after school hours to help the K-9 become accustomed to all of our facilities.

Vehicle Access on School Property

According to School Board Policy 713, vehicles traveling on district property should use designated public roadways. If traveling to Pine-Richland High School, visitors should enter and exit via Warrendale Road and not via Logan Road. Vehicles should only be on the property for school-related matters during operational hours. Drivers should **follow posted speed limit signs at all times with special caution during arrival and dismissal.**



Bicycles

As a reminder, the district installed bicycle racks near the middle and high school campuses. Students are permitted to ride their bicycles to these racks and lock them during the school day. A new, safe walking/biking trail (see image) was paved this year that connects the Pine Trail to our high school campus.

Students must use the designated bike/walking paths only and never ride on or near our parking lots or automobile routes.



Animals on Campus

Although we understand the desire of some people to walk their pets on campus and bring their pets to sporting events, **pets on campus are prohibited unless a person is being supported by a service animal with proper documentation or as part of a police department.** Our policy defines a service animal as any guide dog, signal dog or any other animal individually trained to do work or perform tasks for the benefit of an individual with a disability.

Alcohol, Drug and Smoke-Free Campus

Tobacco and tobacco-like products are prohibited in all areas of our campuses, both inside and outside of the buildings. In our policy, tobacco use is defined as use and/or possession of a lighted or unlighted cigarette, cigar, and pipe; other lighted smoking products; electronic cigarette; smokeless tobacco in any form; and tobacco-related items/devices. Electronic cigarette refers to any device that provides vapor from liquid nicotine, and/or other substances, which is inhaled to simulate smoking tobacco. The term shall include any such devices, whether they are manufactured, distributed, marketed, or sold as e-cigarettes, e-cigars, e-pipes,

vaporizers, or under any other product name or descriptor.

With safety and security always in mind, we want to share a few important reminders **for all after-school events**. As outlined in [Board Policy #904](#), the use of tobacco and possession and use of controlled substances, alcohol, and weapons are prohibited on school premises. In addition, the board has the authority to prohibit the attendance of any individual whose conduct may constitute a disruption to the school event.

If a spectator has concerns in this area, he or she may direct those concerns to a member of the district staff working the event for further action. The health, safety, and welfare of students and the general public is a significant responsibility for K-12 public school districts. Based on the circumstance, local law enforcement may be notified. We have a close partnership with the Northern Regional Police Department (NRPD).

Also, spectators should be aware that outside coolers are not permitted to be brought into an event. Concession stands are often available. Exceptions, due to medical needs or special circumstances, should be discussed with the site manager of the event. **Bags should be limited. Clear, transparent bags are recommended.**

We appreciate the cooperation of the community as the district balances the public use of property with providing a safe and secure learning environment for all.

[Website](#)

Pine-Richland School District | 702 Warrendale Road, Gibsonia, PA 15044

[Unsubscribe ehasinger@pinerichland.org](#)

[Update Profile](#) | [Constant Contact Data Notice](#)

Sent by ehasinger@pinerichland.org in collaboration
with



Try email marketing for free today!