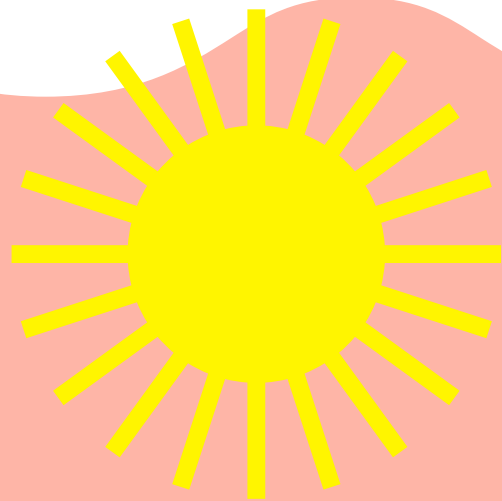




OUR ENERGY

A SUSTAINABLE LIFE



The school has 1,323 solar panels installed. That's the equivalent of the surface of a whole soccer field!

We generate 1,000,000 kWh per year. With this energy, we can supply power to 300 homes! (For homes of approximately 70 m² in moderate climate zones like Barcelona, Shanghai, and San Francisco)

kWh



15%

15% of the energy we use at school is generated by our solar panels.

Having our solar panels is equivalent to 750 trees actively purifying our air every day.



We save 335.77 tons of CO₂ emissions per year, equal to driving from Earth to Saturn and back (in an efficient and reliable car like a Honda Civic).

For every unit of energy we generate from our solar plant, we prevent polluting 1.2 liters of drinking water. This is like saving the same amount of water found in 5,400 standard 500 ml bottles of mineral water.



We've reduced annual pollution emissions by 491 tons, making a significant environmental impact.



Come to the MS/HS Design Center and see the daily energy production in action. Experience firsthand the sustainable power generation that is taking place.

