



www.joshuaisd.org/bond2024





LONG-RANGE PLANNING PROCESS



Reviewed district-wide historic and future enrollment projections



Assessed campus and departmental needs



Gathered feedback from a Future Planning Committee made up of admin, staff, and community members



A recommendation was made to the Board of Trustees on February 16, 2024



Board of Trustees called a bond in the amount of \$106,246,000

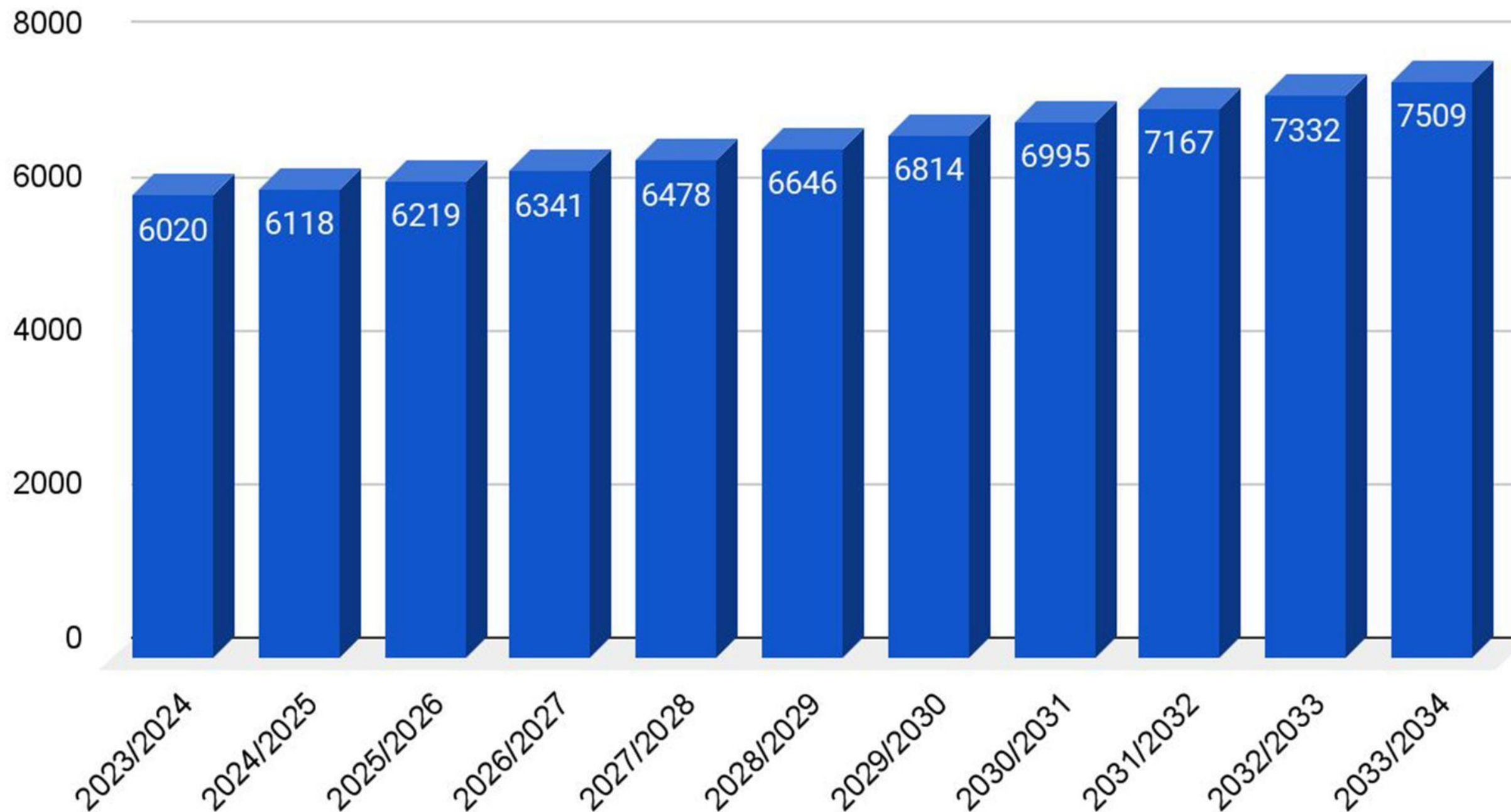


Election day is Saturday, May 4, 2024



JOSHUA ISD IS GROWING

Enrollment Growth



Zonda Education conducted a demographic study for the district projecting Joshua ISD to enroll more than 6,400 students by 2027/28, and approximately 7,000 students by the 2031/32 school year.

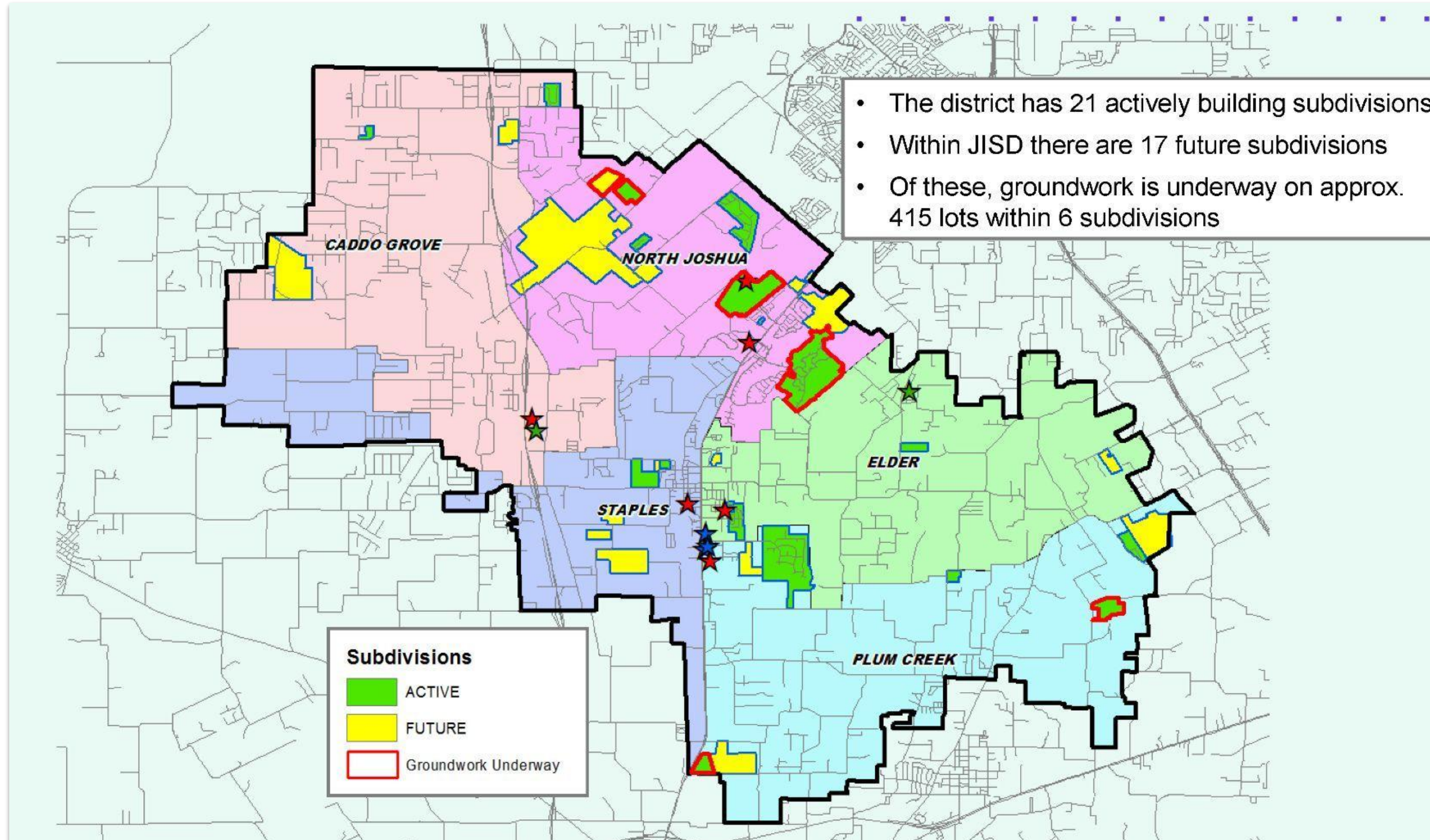
In addition, Elder and North Joshua Elementary are currently exceeding capacity, with North Joshua projected to exceed capacity by approximately 315 students in the 2032/33 school year.



JISD ENROLLMENT PROJECTION

		Fall	Enrollment Projections									
Campus	Capacity	2023/24	2024/25	2025/26	2026/27	2027/28	2028/29	2029/30	2030/31	2031/32	2032/33	2033/34
A.G. Elder Elementary	608	666	677	693	706	722	734	743	753	759	767	776
Caddo Grove Elementary	646	626	630	648	661	674	692	714	738	759	780	805
H.D. Staples Elementary	532	428	445	457	472	482	491	499	505	514	522	531
North Joshua Elementary	703	718	743	773	806	839	873	911	945	980	1,018	1,058
Plum Creek Elementary	627	448	466	480	499	524	554	582	611	638	653	669
ELEMENTARY TOTALS	3,116	2,886	2,961	3,051	3,144	3,241	3,344	3,449	3,552	3,650	3,740	3,839
Elementary Percent Change		2.96%	2.60%	3.04%	3.05%	3.09%	3.18%	3.14%	2.99%	2.76%	2.47%	2.65%
Elementary Absolute Change		83	75	90	93	97	103	105	103	98	90	99
R.C. Loflin Middle School	1,181	726	721	703	708	724	743	758	779	801	824	849
Nichols Middle School	700	603	634	673	705	715	729	745	759	771	782	792
MIDDLE SCHOOL TOTALS	1,881	1,329	1,355	1,376	1,413	1,439	1,472	1,503	1,538	1,572	1,606	1,641
Middle School Percent Change		-0.52%	1.96%	1.55%	2.69%	1.84%	2.29%	2.11%	2.33%	2.21%	2.16%	2.18%
Middle School Absolute Change		-7	26	21	37	26	33	31	35	34	34	35
Joshua 9th Grade Center	699	478	467	478	472	491	500	511	519	534	545	557
Joshua High School	1,411	1,298	1,301	1,279	1,279	1,273	1,296	1,317	1,352	1,377	1,407	1,438
New Horizon High School	100	29	34	35	33	34	34	34	34	34	34	34
HIGH SCHOOL TOTALS	2,210	1,805	1,802	1,792	1,784	1,798	1,830	1,862	1,905	1,945	1,986	2,029
High School Percent Change		2.62%	-0.17%	-0.54%	-0.48%	0.80%	1.78%	1.73%	2.32%	2.10%	2.10%	2.17%
High School Absolute Change		46	-3	-10	-9	14	32	32	43	40	41	43
DISTRICT TOTALS	7,207	6,020	6,118	6,219	6,341	6,478	6,646	6,814	6,995	7,167	7,332	7,509
District Percent Change		2.07%	1.63%	1.66%	1.95%	2.16%	2.59%	2.52%	2.66%	2.46%	2.30%	2.41%
District Absolute Change		122	98	101	121	137	168	168	181	172	165	177

JISD HOUSING DEVELOPMENTS

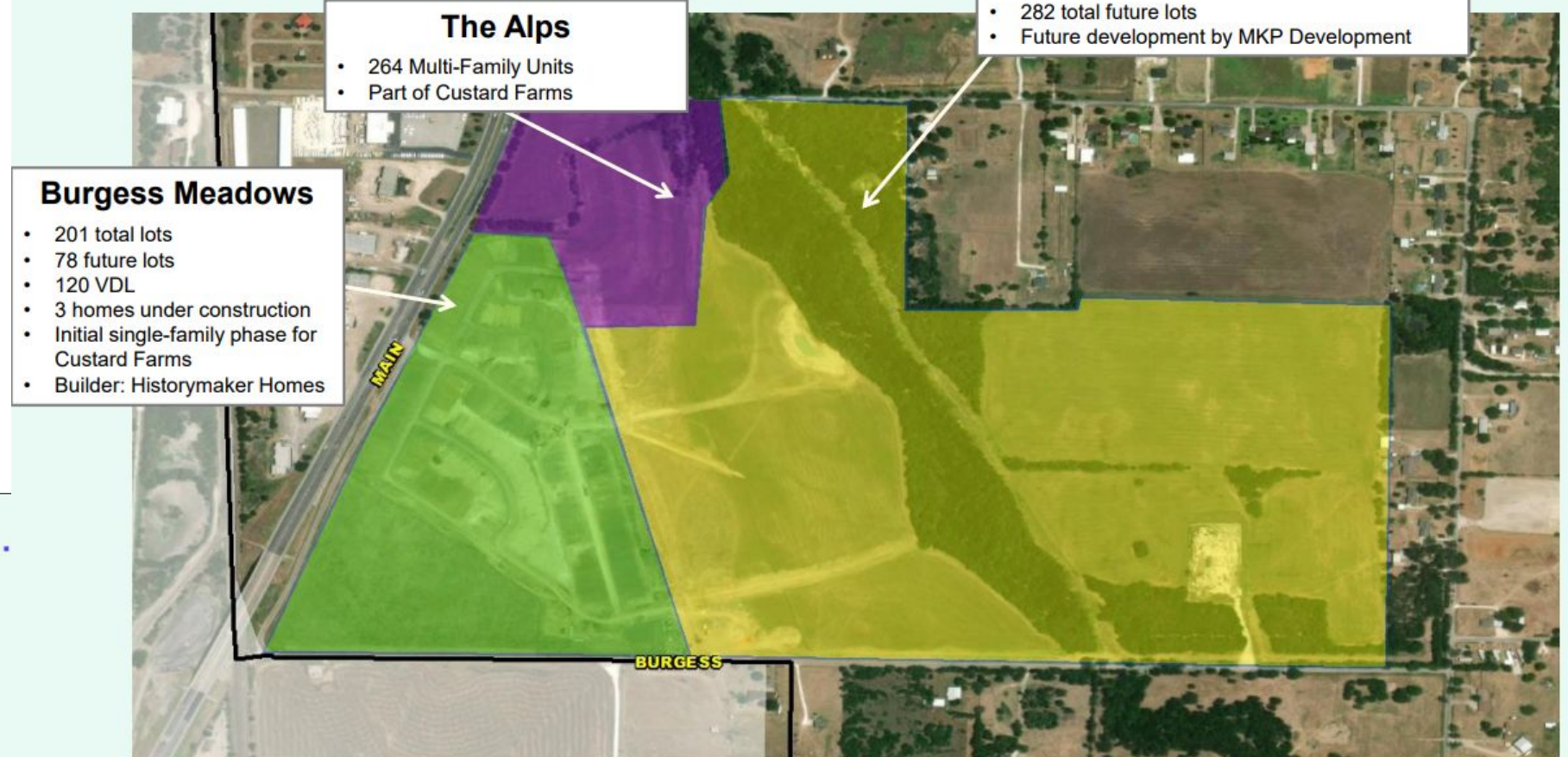


JISD has roughly 120 homes currently in inventory with 500 additional lots available to build on.

JISD HOUSING DEVELOPMENTS



Residential Activity



Residential Activity

The Parks at Panchasarp Farms

- 811 total lots
- 583 future lots
- 42 vacant developed lots
- 19 homes under construction
- 157 occupied homes



October 2023





BOND SCOPE

Proposition A | \$63.1M

Construction of a new elementary school and an addition to Nichols Middle School to have more classrooms for growth

Proposition B | \$8.9M

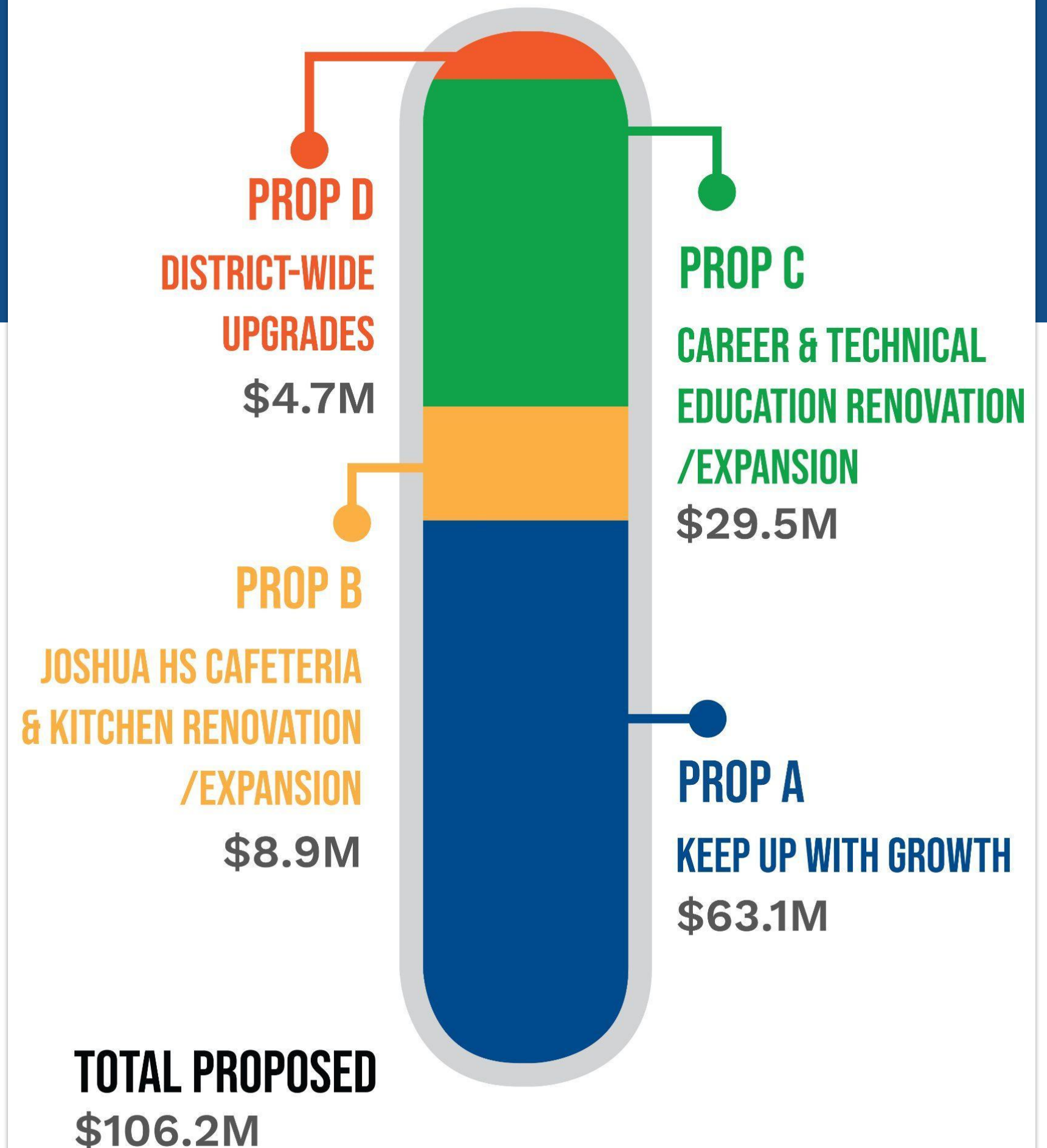
Renovation and expansion updates to the cafeteria and kitchen at Joshua High School

Proposition C | \$29.5M

26,000 square-foot renovation and a 31,000 square-foot addition of the Career and Technical Education facility at Joshua High School

Proposition D | \$4.7M

HVAC replacements, paving improvements at multiple campuses and safety and security upgrades





BOND SCOPE - Proposition B

Proposition B | \$8.9M

Renovation and expansion updates to the cafeteria and kitchen at Joshua High School

- replacing outdated equipment
- expanding to add additional capacity for future growth





BOND SCOPE - Proposition B

- **Current Kitchen Area**
 - Walls deteriorating leaving porous surfaces that can not be cleaned.
 - Loose wires run across the ceiling and coming out of holes in the wall.
 - PVC holding up the ceiling in the walk in freezer.





BOND SCOPE - Proposition B

- **Current Kitchen Area**
 - Floors deteriorating causing trip hazards and surfaces that can't be properly cleaned.





BOND SCOPE - Proposition B

- **Current Kitchen Area**
 - Floor drain edges breaking down and causing a safety hazard
 - Space is too narrow between cook lines and drains so a lot of newer equipment that we would like to buy does not fit.





BOND SCOPE - Proposition B

- **Current Kitchen Area**
 - Hood vent is past it is expected life expectancy and is rusting.
 - Lights and pipes rusting out.
 - Electric socket basically on the floor exposed to water, grease, and dirt.





BOND SCOPE - Proposition B

- **Current Kitchen Area**
 - Dishroom area tables are broken and rusted.
 - Dish machine and booster heater is past its life expectancy and needs replacing.





BOND SCOPE - Proposition B

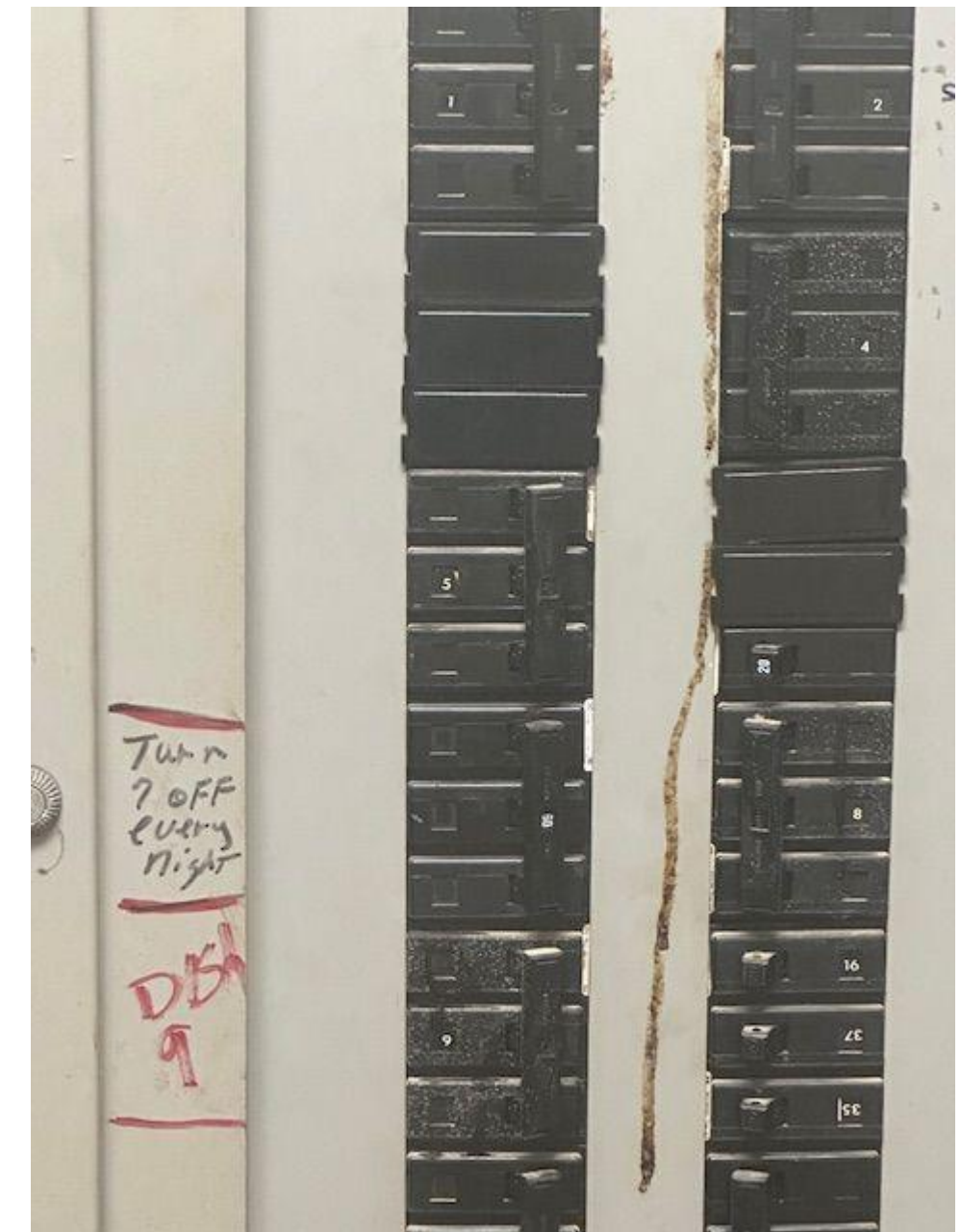
- **Current Kitchen Area**
 - **Serving line drains in front where students are walking.**
 - **All prep tables are corroded.**
 - **Shelves in the dry storage are coming apart.**





BOND SCOPE - Proposition B

- Current Kitchen Area
 - Outdated electrical panels that prevent us from buying newer equipment.





Register to Vote by
April 4



Early Voting is
April 22 - April 30



Election Day is
Saturday, May 4



Visit **www.joshuaisd.org/bond2024**
for voting times and locations

COMMUNITY INFORMATIONAL MEETINGS

Facebook Lives

- April 15 | 9 a.m. | Prop C
- April 18 | 5 p.m. | Prop. D & School Finance

Town Hall

- April 17 | 6 p.m. | JISD Administration Building



Joshua ISD



QUESTIONS?

