



www.joshuaaisd.org/bond2024





LONG-RANGE PLANNING PROCESS



Reviewed district-wide historic and future enrollment projections



Assessed campus and departmental needs



Gathered feedback from a Future Planning Committee made up of admin, staff, and community members



A recommendation was made to the Board of Trustees on February 16, 2024



Board of Trustees called a bond in the amount of \$106,246,000

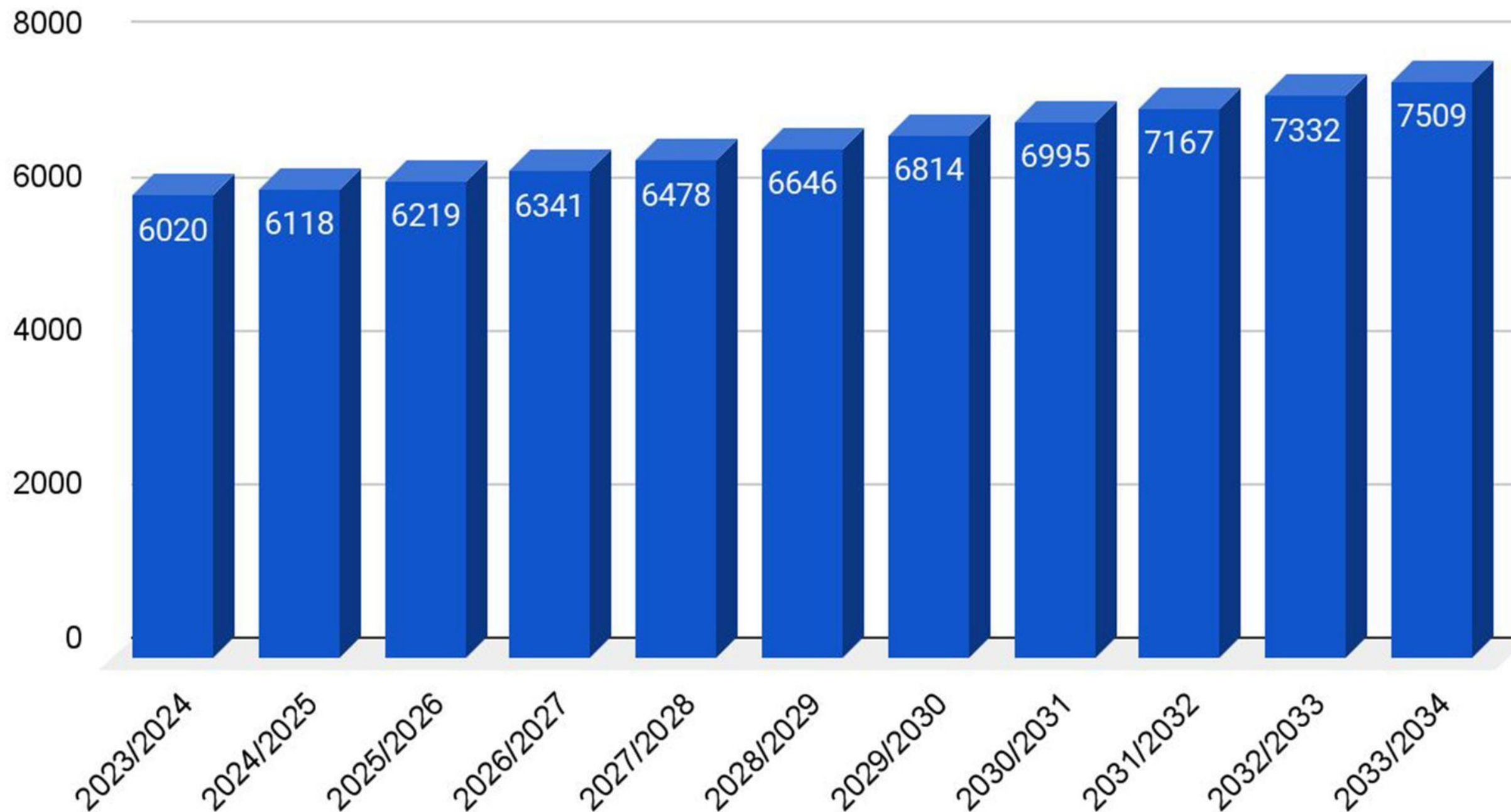


Election day is Saturday, May 4, 2024



JOSHUA ISD IS GROWING

Enrollment Growth



Zonda Education conducted a demographic study for the district projecting Joshua ISD to enroll more than 6,400 students by 2027/28, and approximately 7,000 students by the 2031/32 school year.

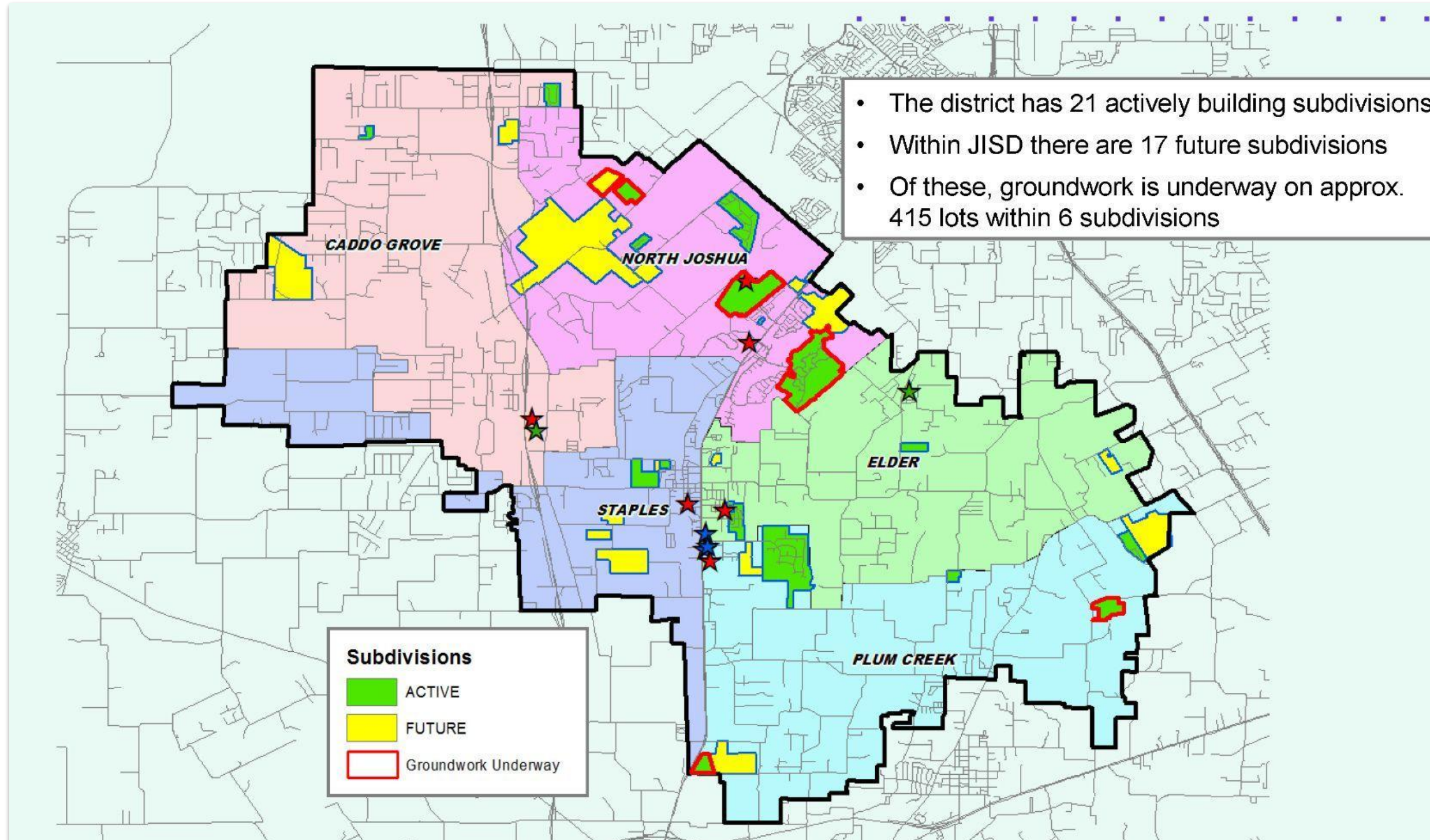
In addition, Elder and North Joshua Elementary are currently exceeding capacity, with North Joshua projected to exceed capacity by approximately 315 students in the 2032/33 school year.



JISD ENROLLMENT PROJECTION

		Fall	Enrollment Projections									
Campus	Capacity	2023/24	2024/25	2025/26	2026/27	2027/28	2028/29	2029/30	2030/31	2031/32	2032/33	2033/34
A.G. Elder Elementary	608	666	677	693	706	722	734	743	753	759	767	776
Caddo Grove Elementary	646	626	630	648	661	674	692	714	738	759	780	805
H.D. Staples Elementary	532	428	445	457	472	482	491	499	505	514	522	531
North Joshua Elementary	703	718	743	773	806	839	873	911	945	980	1,018	1,058
Plum Creek Elementary	627	448	466	480	499	524	554	582	611	638	653	669
ELEMENTARY TOTALS	3,116	2,886	2,961	3,051	3,144	3,241	3,344	3,449	3,552	3,650	3,740	3,839
Elementary Percent Change		2.96%	2.60%	3.04%	3.05%	3.09%	3.18%	3.14%	2.99%	2.76%	2.47%	2.65%
Elementary Absolute Change		83	75	90	93	97	103	105	103	98	90	99
R.C. Loflin Middle School	1,181	726	721	703	708	724	743	758	779	801	824	849
Nichols Middle School	700	603	634	673	705	715	729	745	759	771	782	792
MIDDLE SCHOOL TOTALS	1,881	1,329	1,355	1,376	1,413	1,439	1,472	1,503	1,538	1,572	1,606	1,641
Middle School Percent Change		-0.52%	1.96%	1.55%	2.69%	1.84%	2.29%	2.11%	2.33%	2.21%	2.16%	2.18%
Middle School Absolute Change		-7	26	21	37	26	33	31	35	34	34	35
Joshua 9th Grade Center	699	478	467	478	472	491	500	511	519	534	545	557
Joshua High School	1,411	1,298	1,301	1,279	1,279	1,273	1,296	1,317	1,352	1,377	1,407	1,438
New Horizon High School	100	29	34	35	33	34	34	34	34	34	34	34
HIGH SCHOOL TOTALS	2,210	1,805	1,802	1,792	1,784	1,798	1,830	1,862	1,905	1,945	1,986	2,029
High School Percent Change		2.62%	-0.17%	-0.54%	-0.48%	0.80%	1.78%	1.73%	2.32%	2.10%	2.10%	2.17%
High School Absolute Change		46	-3	-10	-9	14	32	32	43	40	41	43
DISTRICT TOTALS	7,207	6,020	6,118	6,219	6,341	6,478	6,646	6,814	6,995	7,167	7,332	7,509
District Percent Change		2.07%	1.63%	1.66%	1.95%	2.16%	2.59%	2.52%	2.66%	2.46%	2.30%	2.41%
District Absolute Change		122	98	101	121	137	168	168	181	172	165	177

JISD HOUSING DEVELOPMENTS

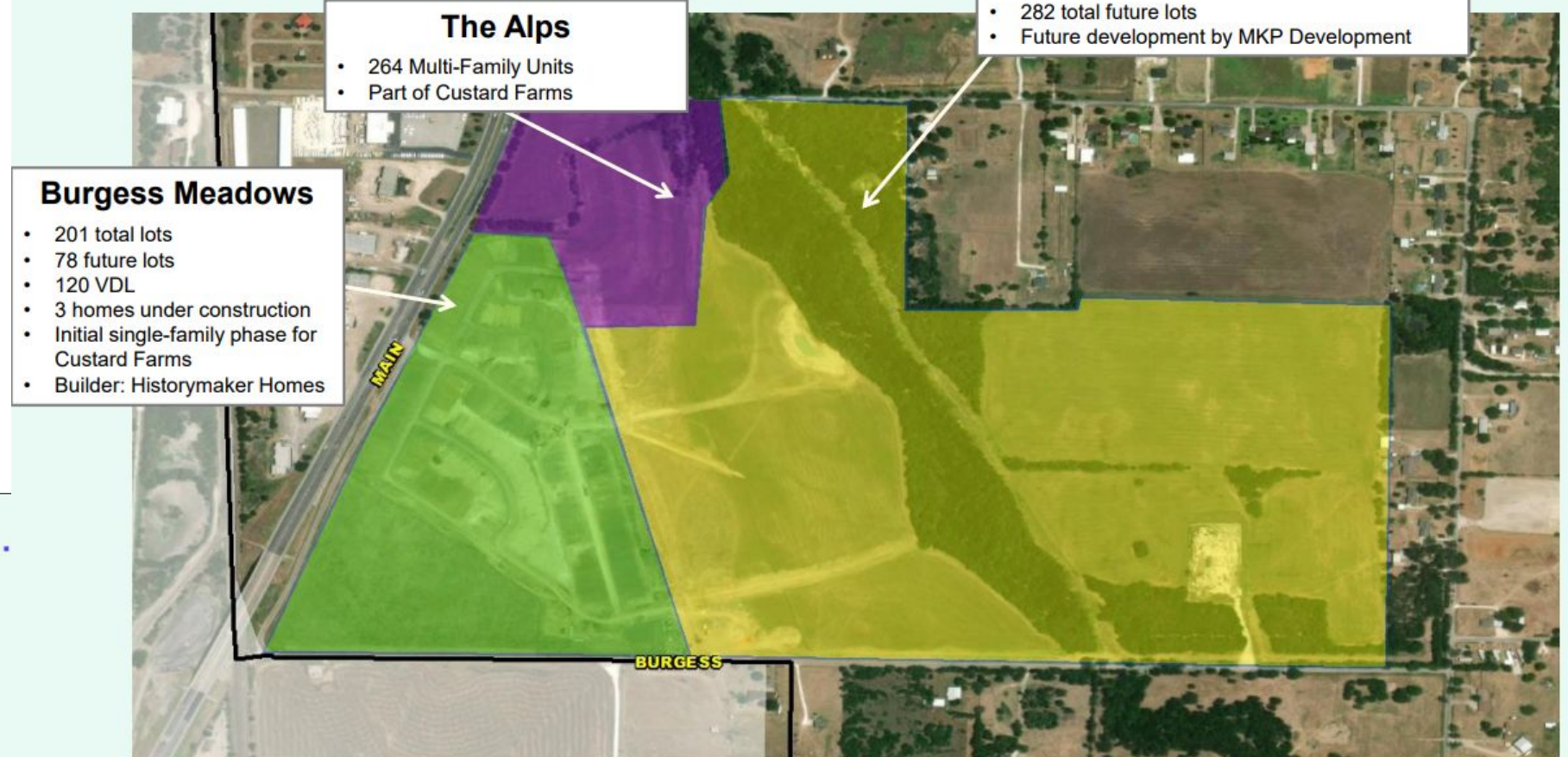


JISD has roughly 120 homes currently in inventory with 500 additional lots available to build on.

JISD HOUSING DEVELOPMENTS



Residential Activity



October 2023



Residential Activity

The Parks at Panchasarp Farms

- 811 total lots
- 583 future lots
- 42 vacant developed lots
- 19 homes under construction
- 157 occupied homes





BOND SCOPE

Proposition A | \$63.1M

Construction of a new elementary school and an addition to Nichols Middle School to have more classrooms for growth

Proposition B | \$8.9M

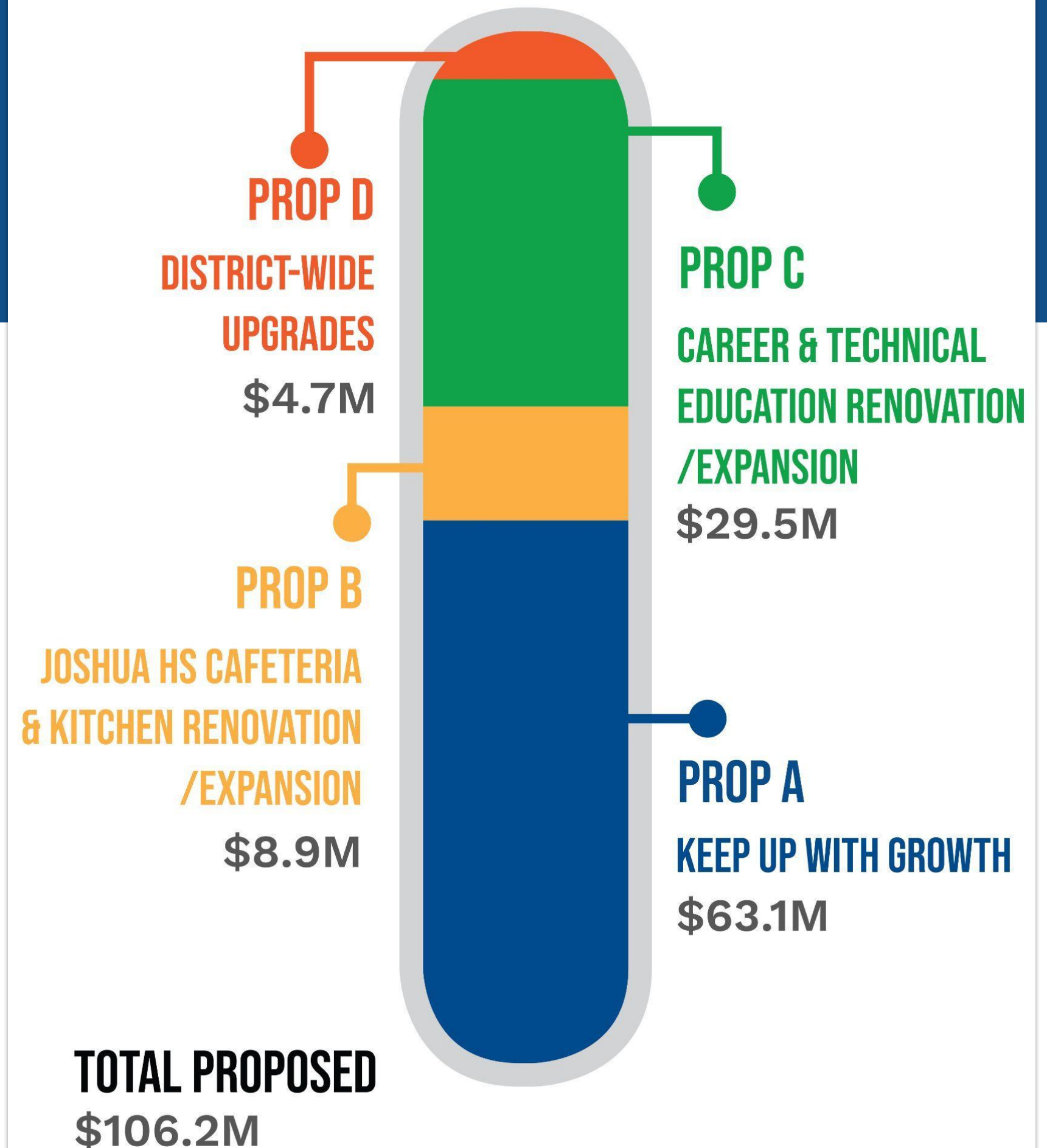
Renovation and expansion updates to the cafeteria and kitchen at Joshua High School

Proposition C | \$29.5M

26,000 square-foot renovation and a 31,000 square-foot addition of the Career and Technical Education facility at Joshua High School

Proposition D | \$4.7M

HVAC replacements, paving improvements at multiple campuses and safety and security upgrades





BOND SCOPE - Proposition A

Proposition A | \$63.1M

Construction of a new elementary school and an addition to Nichols Middle School to have more classrooms for growth

Location: The Parks at Panchasarp Farms

- **PreK - 5 Campus**
- **Size: 92,500 SF / 750 Student Capacity**
- **Safety Features:**
 - **Controlled Entry**
 - **Tornado Shelter - Gym**





BOND SCOPE - Proposition A

Proposition A | \$63.1M

Construction of a new elementary school and an addition to Nichols Middle School to have more classrooms for growth

Prepare for projected increase of approximately 300 students in 10 years, which will create a capacity for 1,000 students

- **Size: 13,500 SF / 10 Classrooms**
- **Features - general and science classrooms**





BOND SCOPE

Bond 2015 - Nichols Middle School

50K Foot Cost				
High-Level Buckets	Millions	Sq Ft?	Sq Ft Calculated	Cost Per Sq Ft
Physical Building	\$ 24.75	y	\$ 24,749,134	\$ 203.82
Interior Additions	\$ 1.78	y	\$ 1,778,941	
Construction Oversight	\$ 1.32		\$ -	
Roadway/Parking/Slabs/Signs	\$ 1.07	y	\$ 1,072,873	
Sports Additions	\$ 1.00		\$ -	
Outside Additions	\$ 0.80		\$ -	
TxDot	\$ 0.30		\$ -	
Signage	\$ 0.04		\$ -	
Roadway/Parking	\$ -		\$ -	
Totals	\$ 31.06		\$ 27,600,948	



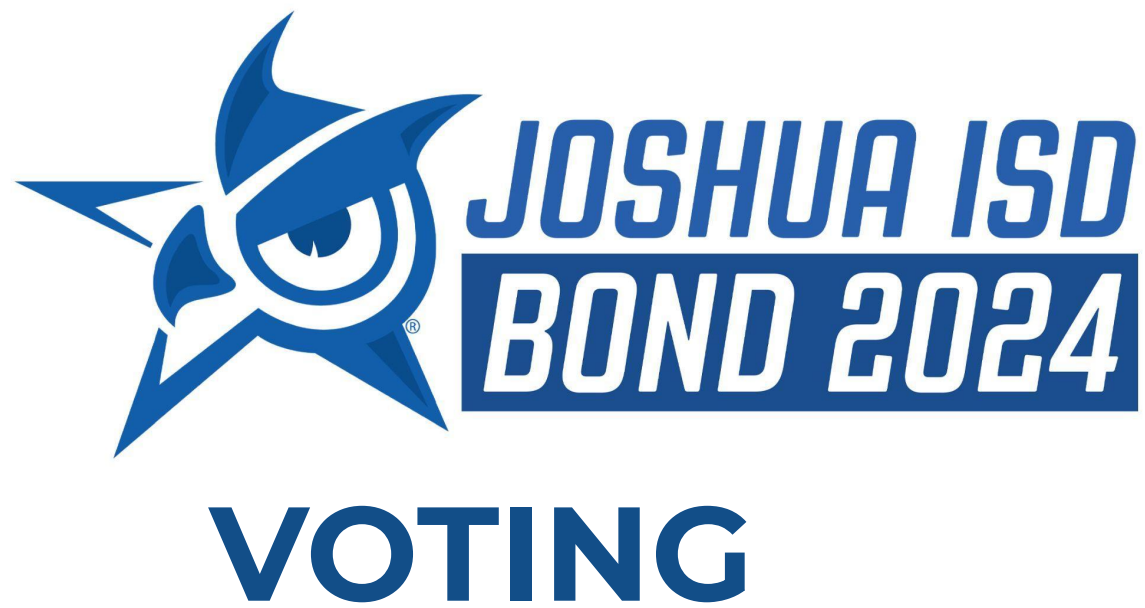
BOND SCOPE

Bond 2015 - Nichols Middle School

Top 10 Cost Elements For NMS			
Top 10	Millions	High-Level Buckets	% Of Cost
Concrete	\$ 5.75		Items Account For 67% Of The Total Cost For NMS
Masonry	\$ 3.76	Physical Building	
Site Utilities	\$ 3.00	Physical Building	
Electrical	\$ 2.09	Physical Building	
Steel	\$ 1.64	Physical Building	
Roofing	\$ 1.32	Physical Building	
Plumbing	\$ 1.18	Physical Building	
HVAC	\$ 0.75	Physical Building	
Food Service Equipment	\$ 0.67	Interior Additions	
Drywall and Ceilings	\$ 0.67	Physical Building	
Balance	\$ 10.25		33%
Totals	\$ 31.06		



ELEMENTARY SCHOOL



Register to Vote by
April 4



Early Voting is
April 22 - April 30



Election Day is
Saturday, May 4



Visit **www.joshuaisd.org/bond2024**
for voting times and locations

COMMUNITY INFORMATIONAL MEETINGS

Facebook Lives

- April 11 | 5 p.m. | Prop A
- April 12 | 9 a.m. | Prop B
- April 15 | 9 a.m. | Prop C
- April 18 | 5 p.m. | Prop. D & School Finance

Town Hall

- April 17 | 6 p.m. | JISD Administration Building



Joshua ISD



QUESTIONS?

