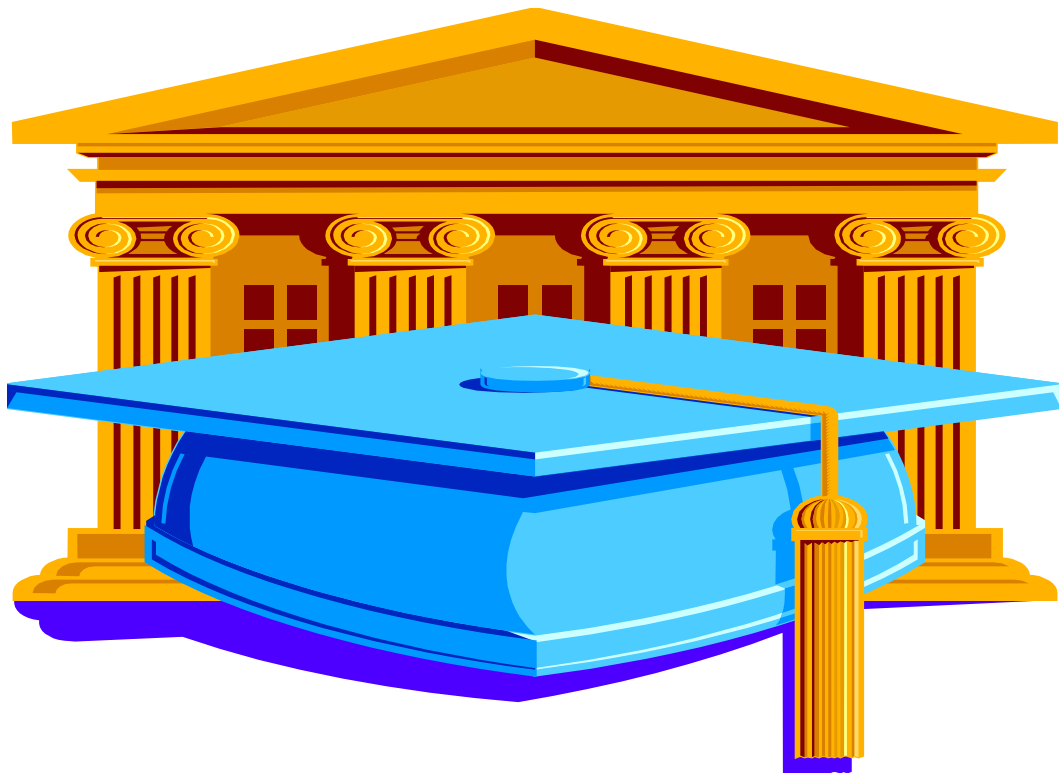


Lakeview High School



Culminating Survey Class of 2018

Prepared by:

LifeTrack Services, Inc.
1271 Port Drive, Clarkston, WA 99403
1-800-738-6466

SURVEY SUMMARY

AS OF 10/4/2023

MAILING SUMMARY

GRADUATES:	60
BAD ADDRESSES	3

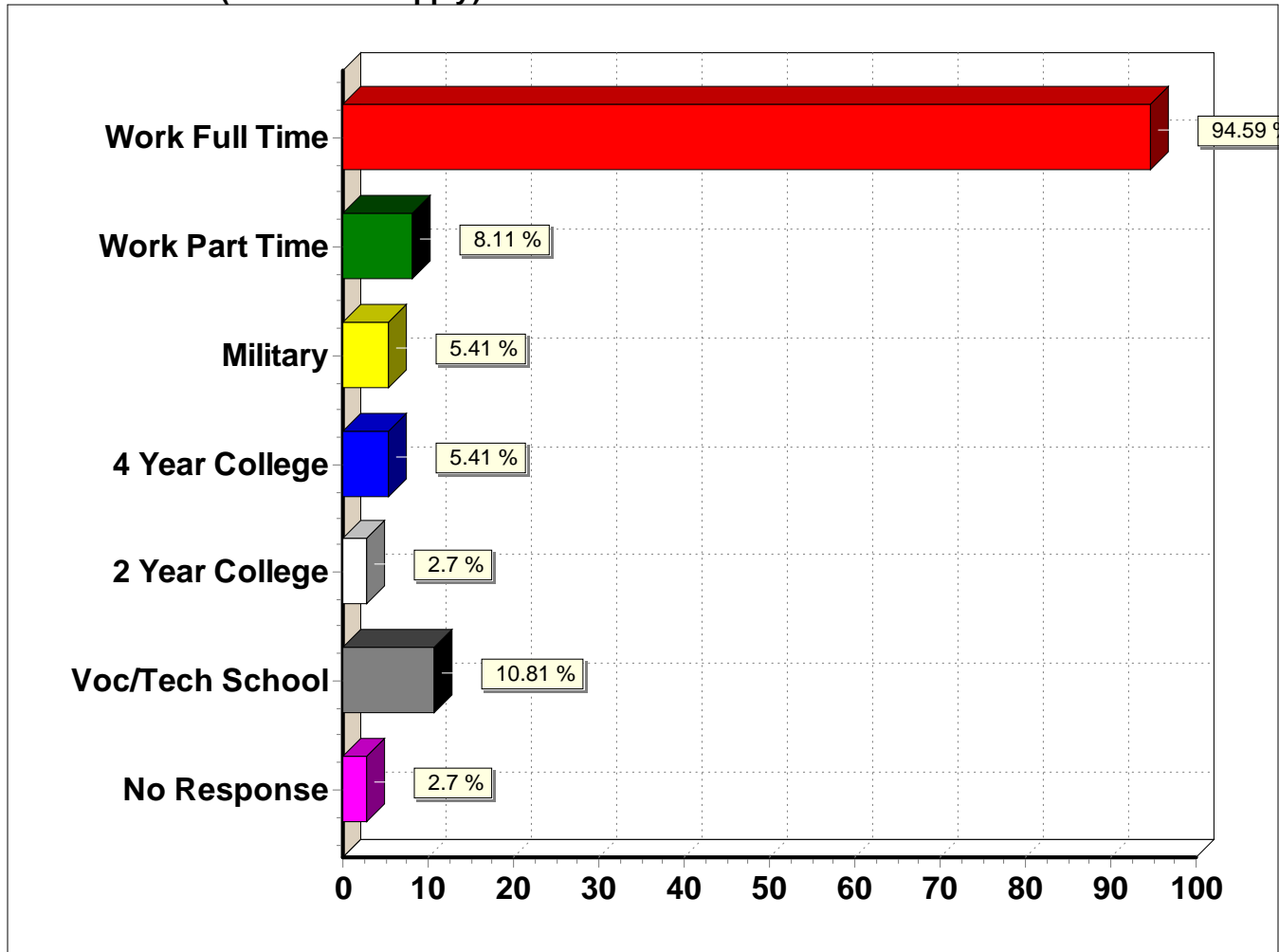
FOLLOW-UP CALL SUMMARY

GRADUATES:	60
NO PHONE NUMBERS:	0
DISCONNECTED PHONE NUMBERS:	2
WRONG PHONE NUMBERS:	1
GRADUATE FOLLOW-UP CALLS	57

SURVEY RESULTS

NOT INTERESTED IN COMPLETING	2
TOTAL RESPONSES TO SURVEY:	37
% RESPONDING TO SURVEY:	61.7%

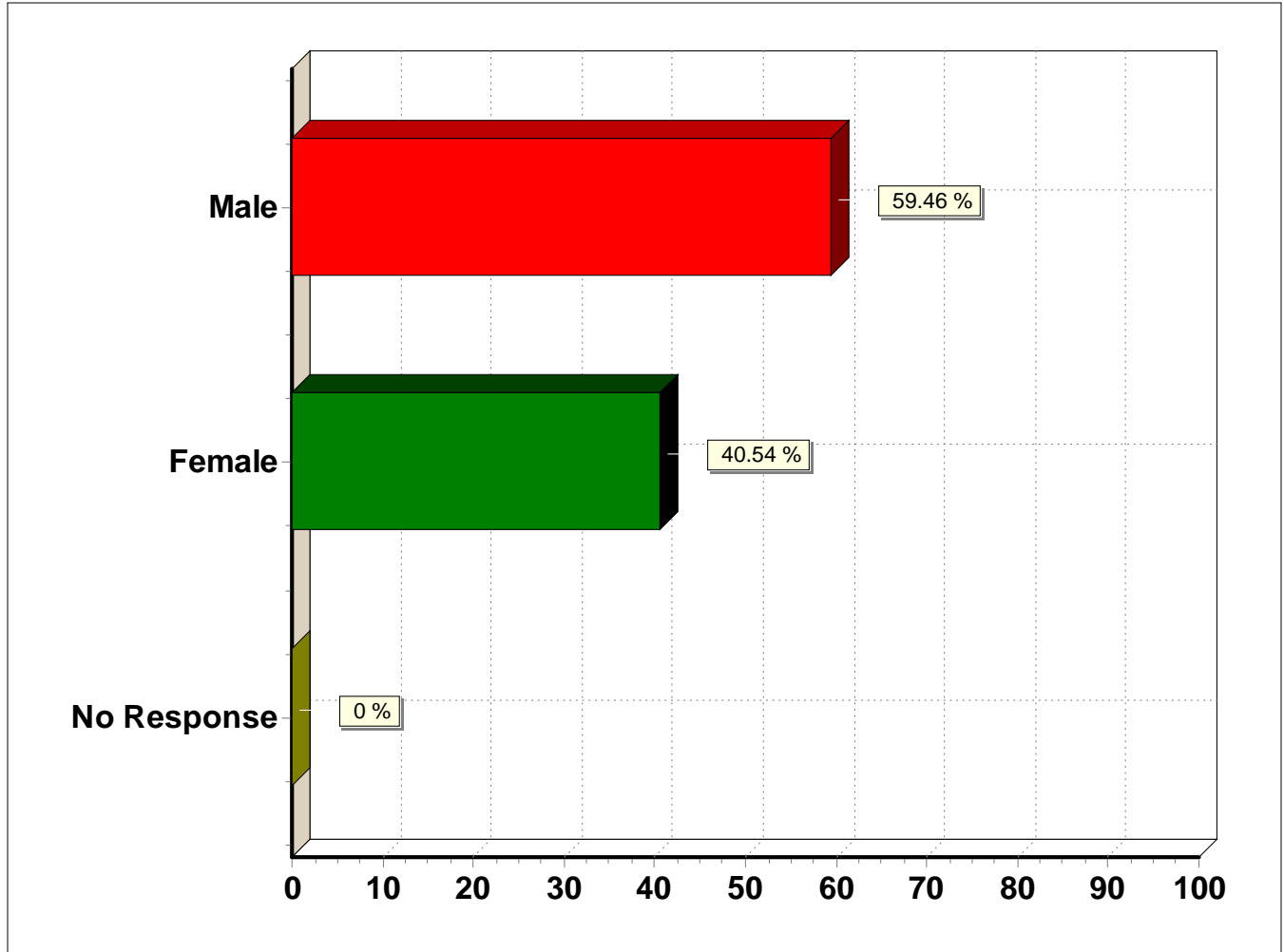
Present Status: (Mark all that apply)



Present Status: (Mark all that apply)

Response (n = 37)	Frequency	Percent
Work Full Time	35	94.6%
Work Part Time	3	8.1%
Military	2	5.4%
4 Year College	2	5.4%
2 Year College	1	2.7%
Voc/Tech School	4	10.8%
No Response	1	2.7%

Gender:



Gender:

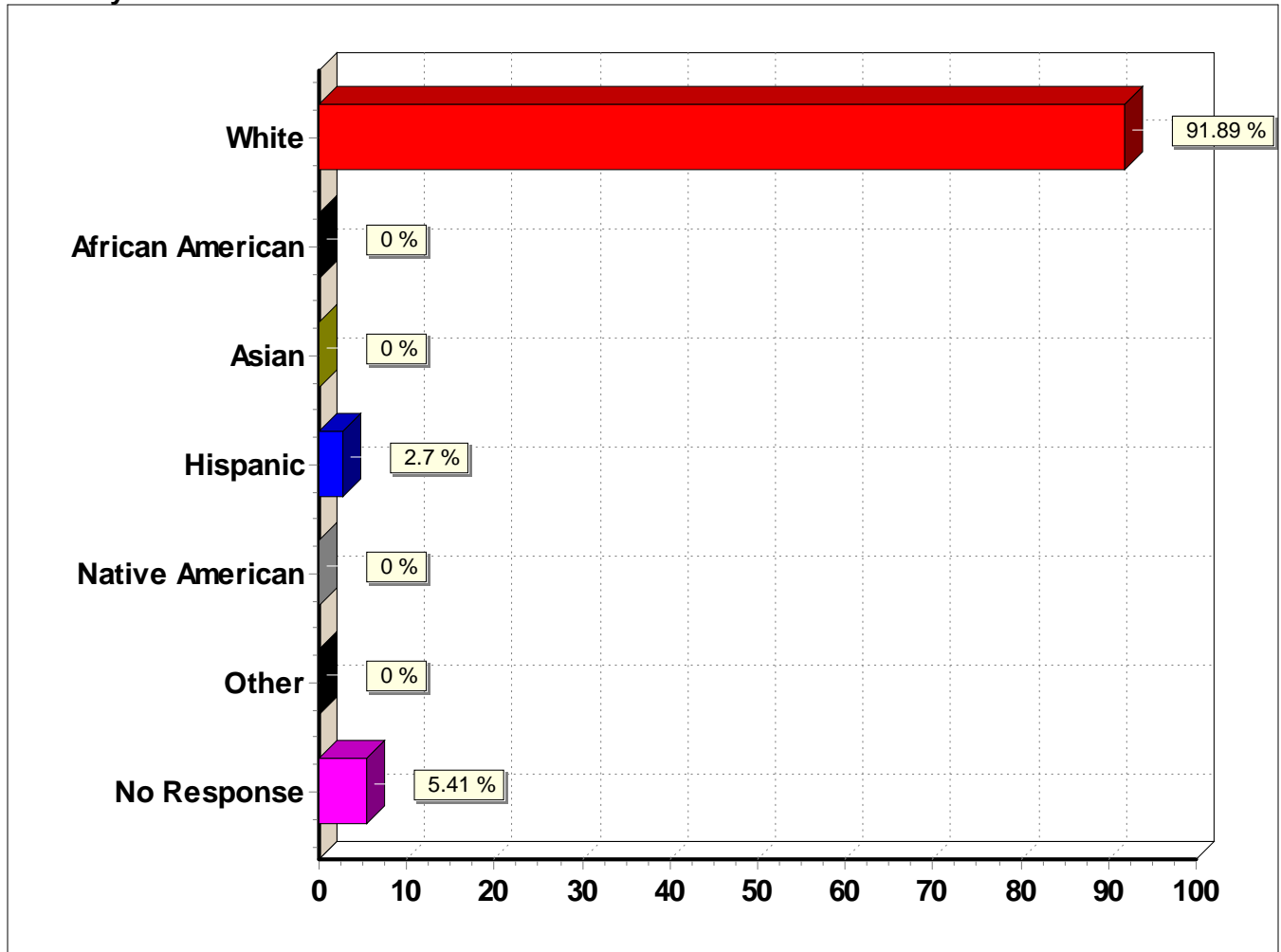
Response (n = 37)	Frequency	Percent
Male	22	59.5%
Female	15	40.5%
No Response	0	0.0%

Question disaggregated into cross tabulations by Ethnic Origin and Gender

Frequency Row Percent		Gender:			
		Male	Female	No Response	Total (Row)
Ethnicity / Race:	White	21 61.8%	13 38.2%	0 0.0%	34 100.0%
	African American	0 0.0%	0 0.0%	0 0.0%	0 0.0%
	Asian	0 0.0%	0 0.0%	0 0.0%	0 0.0%
	Hispanic	0 0.0%	1 100.0%	0 0.0%	1 100.0%
	Native American	0 0.0%	0 0.0%	0 0.0%	0 0.0%
	Other	0 0.0%	0 0.0%	0 0.0%	0 0.0%
	No Response	1 50.0%	1 50.0%	0 0.0%	2 100.0%
	Total (Column)	22	15	0	37
	Count (n)	-	-	-	-

Frequency Row Percent		Ethnicity / Race:							Total (Row)
		White	African American	Asian	Hispanic	Native American	Other	No Response	
Gender:	Male	21 95.5%	0 0.0%	0 0.0%	0 0.0%	0 0.0%	0 0.0%	1 4.5%	22 100.0%
	Female	13 86.7%	0 0.0%	0 0.0%	1 6.7%	0 0.0%	0 0.0%	1 6.7%	15 100.0%
	No Response	0 0.0%	0 0.0%	0 0.0%	0 0.0%	0 0.0%	0 0.0%	0 0.0%	0 0.0%
	Total (Column)	34	0	0	1	0	0	2	37
	Count (n)	-	-	-	-	-	-	-	-

Ethnicity / Race:



Ethnicity / Race:

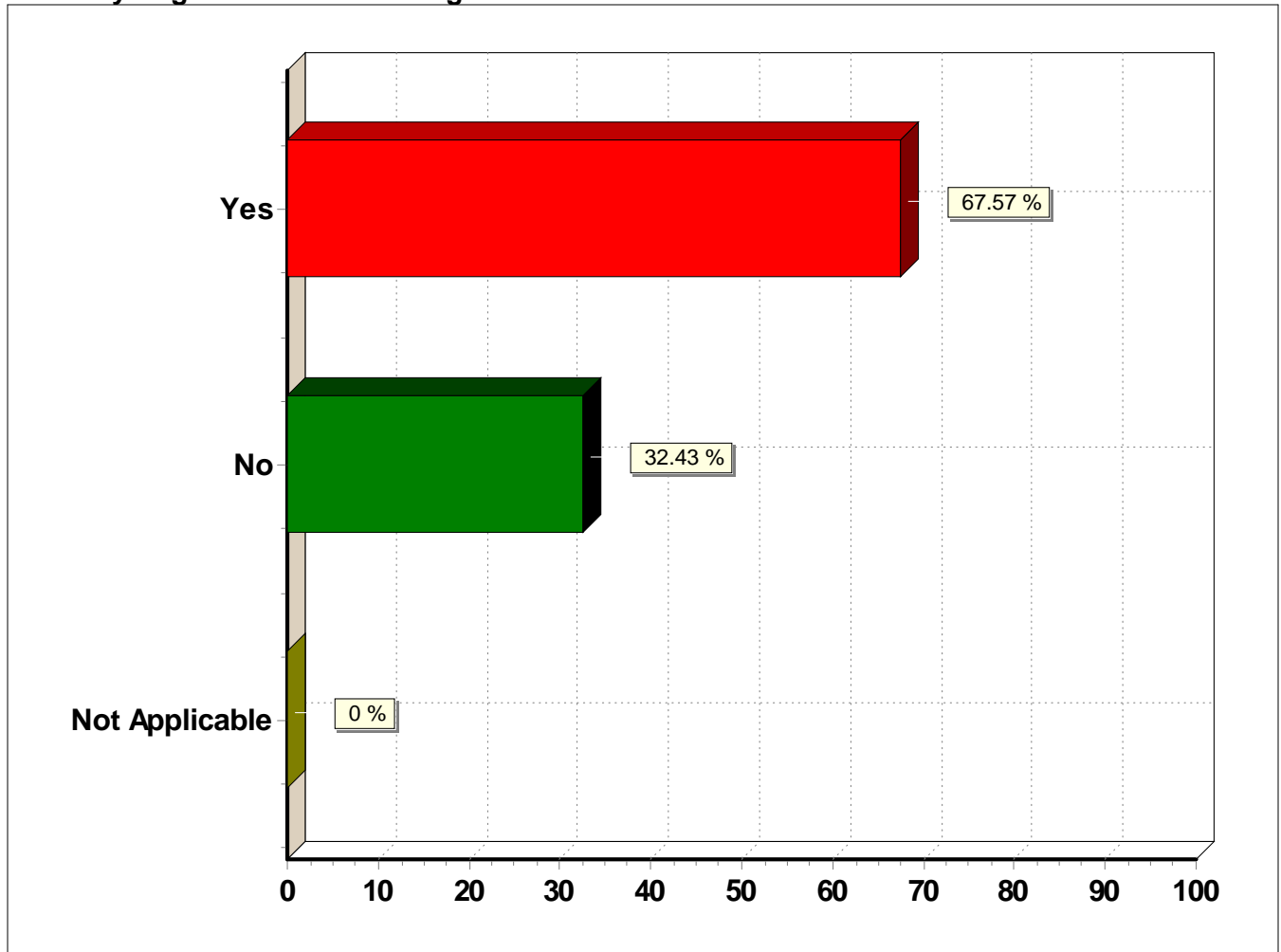
Response (n = 37)	Frequency	Percent
White	34	91.9%
African American	0	0.0%
Asian	0	0.0%
Hispanic	1	2.7%
Native American	0	0.0%
Other	0	0.0%
No Response	2	5.4%

Question disaggregated into cross tabulations by Ethnic Origin and Gender

Frequency Row Percent		Gender:			
		Male	Female	No Response	Total (Row)
Ethnicity / Race:	White	21 61.8%	13 38.2%	0 0.0%	34 100.0%
	African American	0 0.0%	0 0.0%	0 0.0%	0 0.0%
	Asian	0 0.0%	0 0.0%	0 0.0%	0 0.0%
	Hispanic	0 0.0%	1 100.0%	0 0.0%	1 100.0%
	Native American	0 0.0%	0 0.0%	0 0.0%	0 0.0%
	Other	0 0.0%	0 0.0%	0 0.0%	0 0.0%
	No Response	1 50.0%	1 50.0%	0 0.0%	2 100.0%
	Total (Column)	22 -	15 -	0 -	37 -
Count (n) 37					

Frequency Row Percent		Ethnicity / Race:							
		White	African American	Asian	Hispanic	Native American	Other	No Response	Total (Row)
Gender:	Male	21 95.5%	0 0.0%	0 0.0%	0 0.0%	0 0.0%	0 0.0%	1 4.5%	22 100.0%
	Female	13 86.7%	0 0.0%	0 0.0%	1 6.7%	0 0.0%	0 0.0%	1 6.7%	15 100.0%
	No Response	0 0.0%	0 0.0%	0 0.0%	0 0.0%	0 0.0%	0 0.0%	0 0.0%	0 0.0%
	Total (Column)	34 -	0 -	0 -	1 -	0 -	0 -	2 -	37 -
	Count (n) 37								

1. Have you graduated from college?



1. Have you graduated from college?

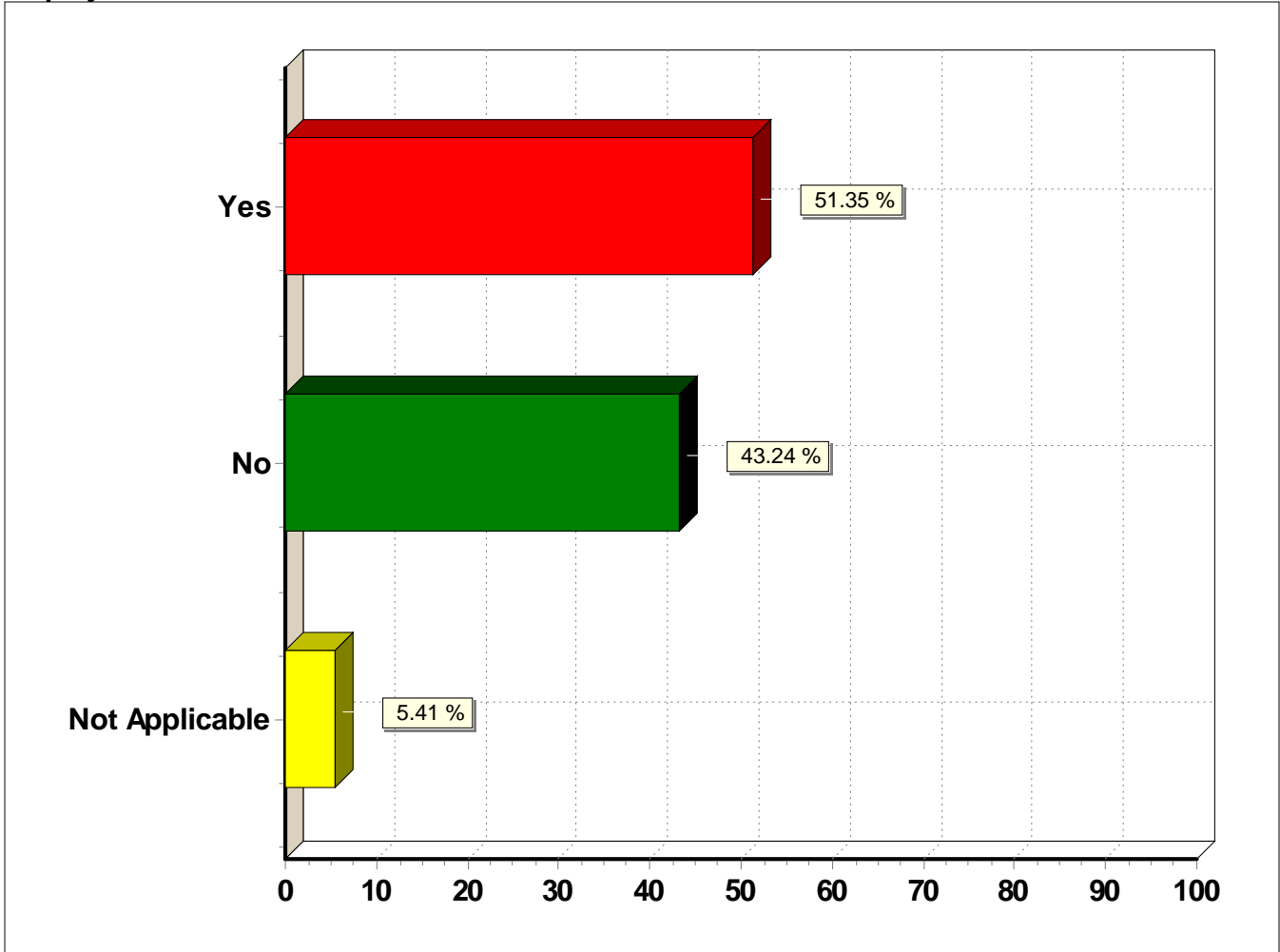
Response (n = 37)	Frequency	Percent
Yes	25	67.6%
No	12	32.4%
Not Applicable	0	0.0%

Question 1 disaggregated into cross tabulations by Ethnic Origin and Gender

Frequency Row Percent		1. Have you graduated from college?			
		Yes	No	Not Applicable	Total (Row)
Gender:	Male	14 63.6%	8 36.4%	0 0.0%	22 100.0%
	Female	11 73.3%	4 26.7%	0 0.0%	15 100.0%
	No Response	0 0.0%	0 0.0%	0 0.0%	0 0.0%
	Total (Column)	25	12	0	37
	Count (n)	-	-	-	-

Frequency Row Percent		1. Have you graduated from college?			
		Yes	No	Not Applicable	Total (Row)
Ethnicity / Race:	White	24 70.6%	10 29.4%	0 0.0%	34 100.0%
	African American	0 0.0%	0 0.0%	0 0.0%	0 0.0%
	Asian	0 0.0%	0 0.0%	0 0.0%	0 0.0%
	Hispanic	1 100.0%	0 0.0%	0 0.0%	1 100.0%
	Native American	0 0.0%	0 0.0%	0 0.0%	0 0.0%
	Other	0 0.0%	0 0.0%	0 0.0%	0 0.0%
	No Response	0 0.0%	2 100.0%	0 0.0%	2 100.0%
	Total (Column)	25	12	0	37
	Count (n)	-	-	-	-

2. Did you select career and technical programs in high school to prepare you for your current employment?



2. Did you select career and technical programs in high school to prepare you for your current employment?

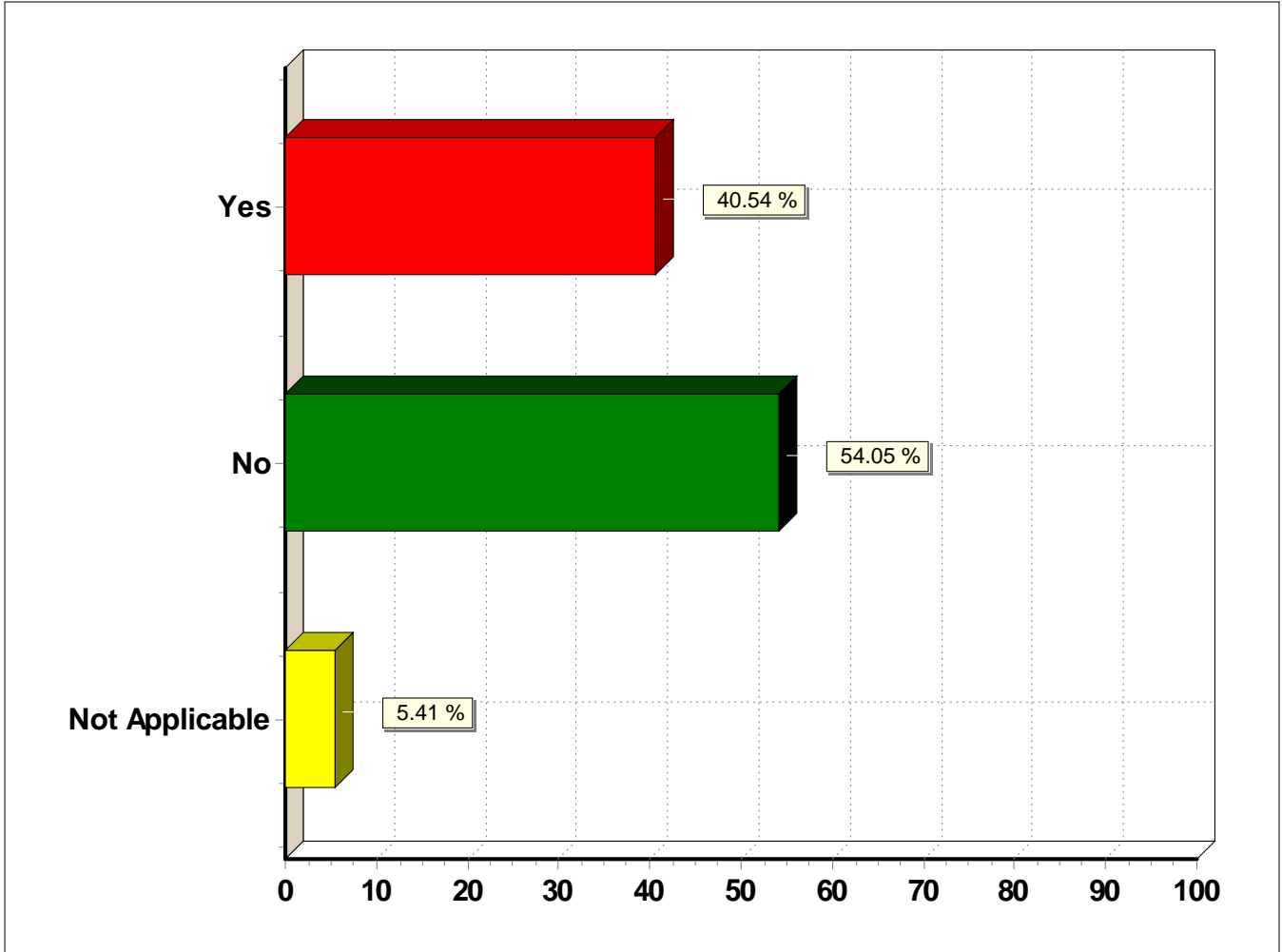
Response (n = 37)	Frequency	Percent
Yes	19	51.4%
No	16	43.2%
Not Applicable	2	5.4%

Question 2 disaggregated into cross tabulations by Ethnic Origin and Gender

Frequency Row Percent		2. Did you select career and technical programs in high school to prepare you for your current employment?			
		Yes	No	Not Applicable	Total (Row)
Gender:	Male	12 54.5%	9 40.9%	1 4.5%	22 100.0%
	Female	7 46.7%	7 46.7%	1 6.7%	15 100.0%
	No Response	0 0.0%	0 0.0%	0 0.0%	0 0.0%
	Total (Column)	19	16	2	37
	Count (n)	-	-	-	-
Count (n) 37					

Frequency Row Percent		2. Did you select career and technical programs in high school to prepare you for your current employment?			
		Yes	No	Not Applicable	Total (Row)
Ethnicity / Race:	White	19 55.9%	15 44.1%	0 0.0%	34 100.0%
	African American	0 0.0%	0 0.0%	0 0.0%	0 0.0%
	Asian	0 0.0%	0 0.0%	0 0.0%	0 0.0%
	Hispanic	0 0.0%	1 100.0%	0 0.0%	1 100.0%
	Native American	0 0.0%	0 0.0%	0 0.0%	0 0.0%
	Other	0 0.0%	0 0.0%	0 0.0%	0 0.0%
	No Response	0 0.0%	0 0.0%	2 100.0%	2 100.0%
	Total (Column)	19	16	2	37
	Count (n)	-	-	-	-
Count (n) 37					

3. Was additional and/or specialized training required to meet the demands of any job you've had?



3. Was additional and/or specialized training required to meet the demands of any job you've had?

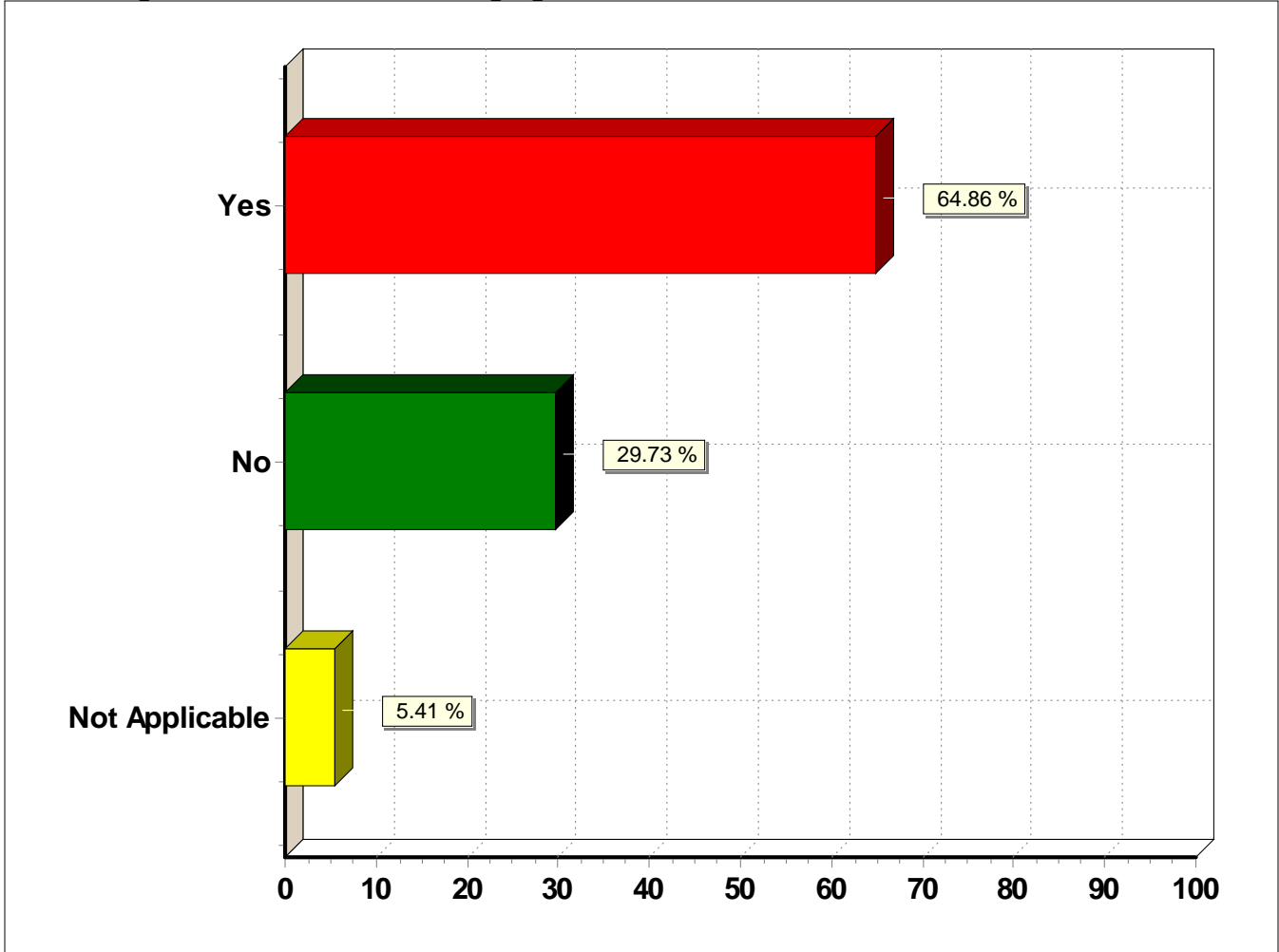
Response (n = 37)	Frequency	Percent
Yes	15	40.5%
No	20	54.1%
Not Applicable	2	5.4%

Question 3 disaggregated into cross tabulations by Ethnic Origin and Gender

Frequency Row Percent		3. Was additional and/or specialized training required to meet the demands of any job you've had?			
		Yes	No	Not Applicable	Total (Row)
Gender:	Male	10 45.5%	11 50.0%	1 4.5%	22 100.0%
	Female	5 33.3%	9 60.0%	1 6.7%	15 100.0%
	No Response	0 0.0%	0 0.0%	0 0.0%	0 0.0%
	Total (Column)	15 -	20 -	2 -	37 -
	Count (n)	37			

Frequency Row Percent		3. Was additional and/or specialized training required to meet the demands of any job you've had?			
		Yes	No	Not Applicable	Total (Row)
Ethnicity / Race:	White	14 41.2%	18 52.9%	2 5.9%	34 100.0%
	African American	0 0.0%	0 0.0%	0 0.0%	0 0.0%
	Asian	0 0.0%	0 0.0%	0 0.0%	0 0.0%
	Hispanic	0 0.0%	1 100.0%	0 0.0%	1 100.0%
	Native American	0 0.0%	0 0.0%	0 0.0%	0 0.0%
	Other	0 0.0%	0 0.0%	0 0.0%	0 0.0%
	No Response	1 50.0%	1 50.0%	0 0.0%	2 100.0%
	Total (Column)	15 -	20 -	2 -	37 -
	Count (n)	37			

4. Were high school courses challenging?



4. Were high school courses challenging?

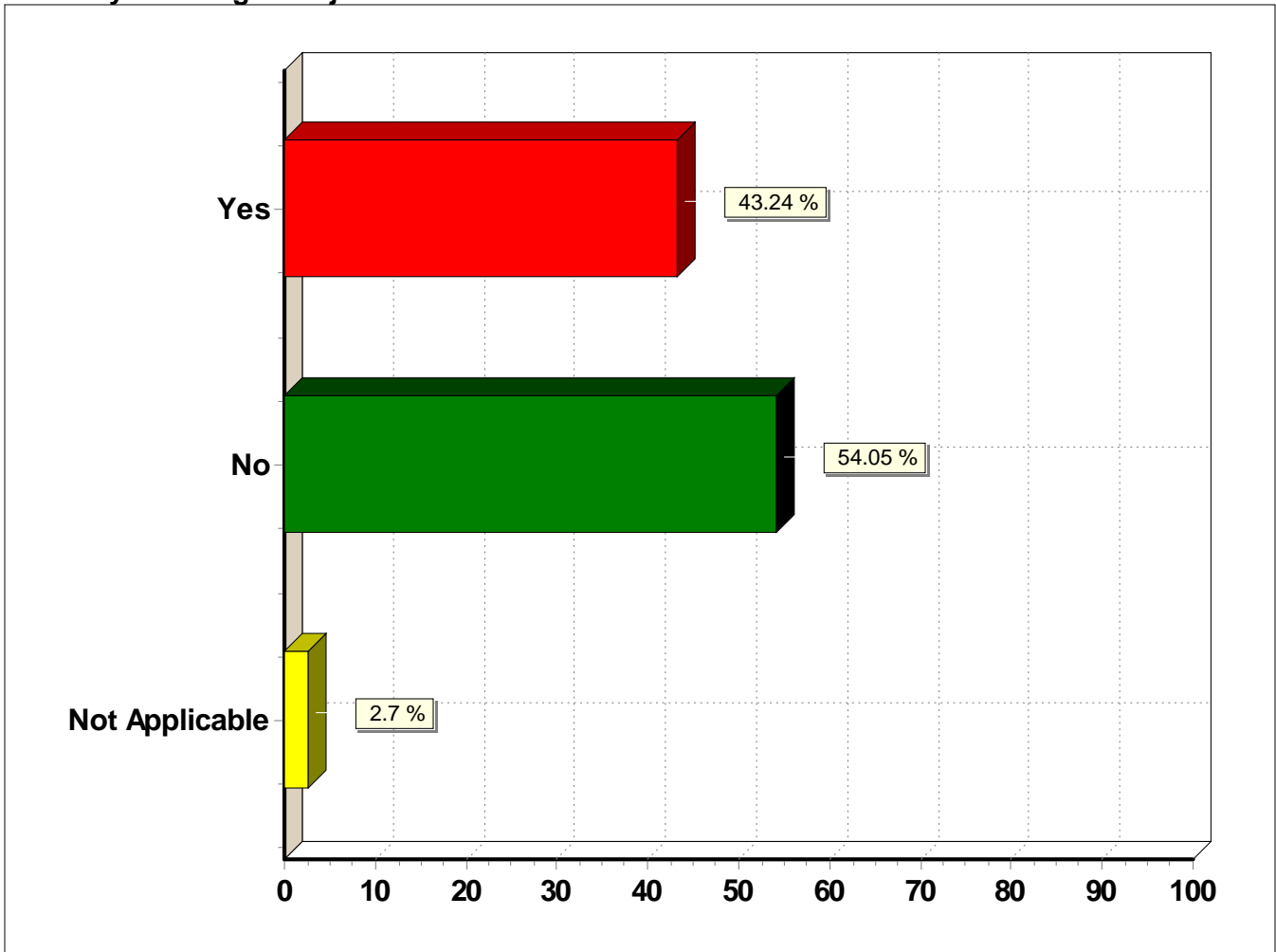
Response (n = 37)	Frequency	Percent
Yes	24	64.9%
No	11	29.7%
Not Applicable	2	5.4%

Question 4 disaggregated into cross tabulations by Ethnic Origin and Gender

Frequency Row Percent		4. Were high school courses challenging?			
		Yes	No	Not Applicable	Total (Row)
Gender:	Male	14 63.6%	7 31.8%	1 4.5%	22 100.0%
	Female	10 66.7%	4 26.7%	1 6.7%	15 100.0%
	No Response	0 0.0%	0 0.0%	0 0.0%	0 0.0%
	Total (Column)	24 -	11 -	2 -	37 -
	Count (n)	37			

Frequency Row Percent		4. Were high school courses challenging?			
		Yes	No	Not Applicable	Total (Row)
Ethnicity / Race:	White	21 61.8%	11 32.4%	2 5.9%	34 100.0%
	African American	0 0.0%	0 0.0%	0 0.0%	0 0.0%
	Asian	0 0.0%	0 0.0%	0 0.0%	0 0.0%
	Hispanic	1 100.0%	0 0.0%	0 0.0%	1 100.0%
	Native American	0 0.0%	0 0.0%	0 0.0%	0 0.0%
	Other	0 0.0%	0 0.0%	0 0.0%	0 0.0%
	No Response	2 100.0%	0 0.0%	0 0.0%	2 100.0%
	Total (Column)	24 -	11 -	2 -	37 -
	Count (n)	37			

5. Have you changed majors or career direction?



5. Have you changed majors or career direction?

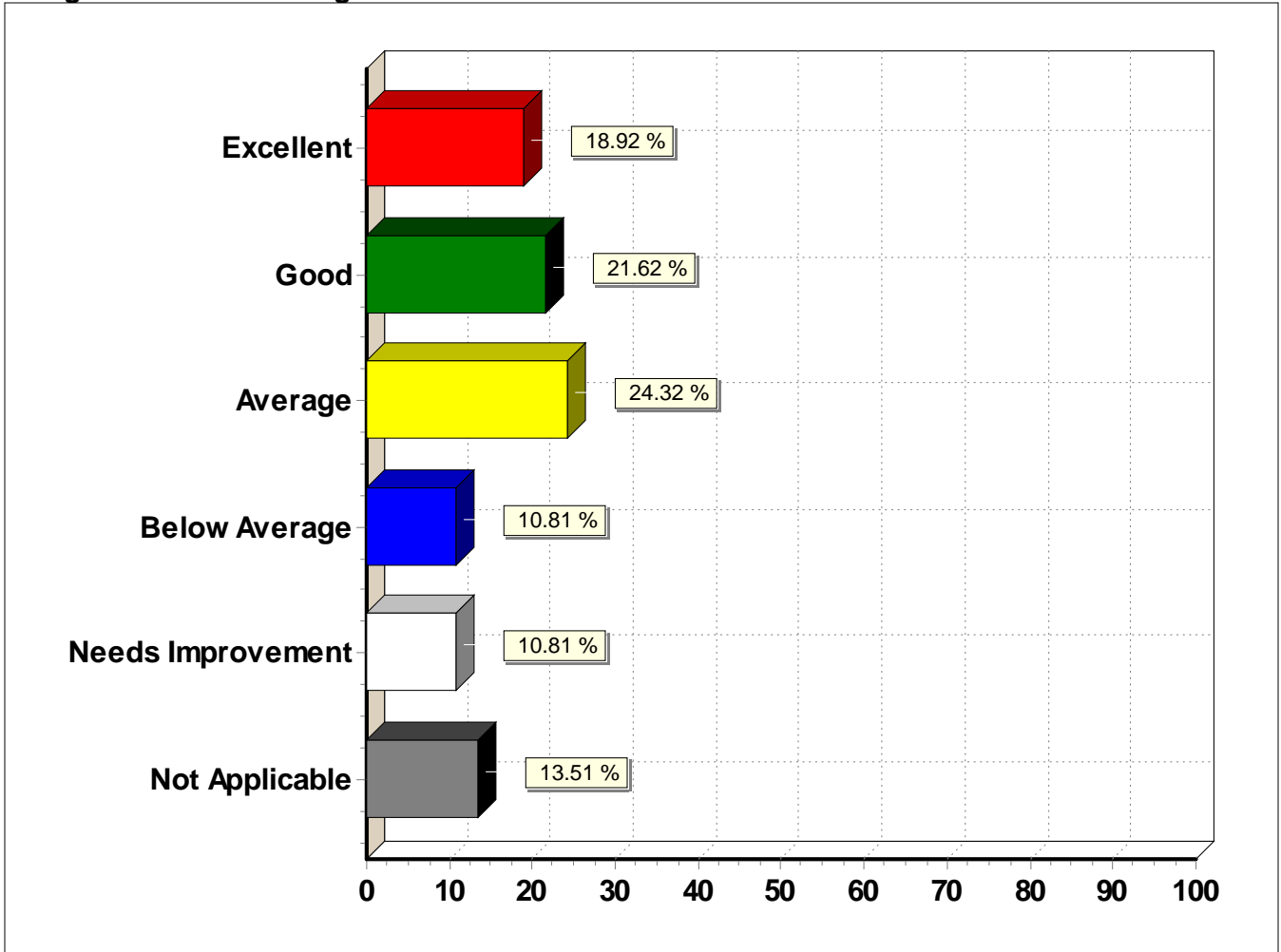
Response (n = 37)	Frequency	Percent
Yes	16	43.2%
No	20	54.1%
Not Applicable	1	2.7%

Question 5 disaggregated into cross tabulations by Ethnic Origin and Gender

Frequency Row Percent		5. Have you changed majors or career direction?			
		Yes	No	Not Applicable	Total (Row)
Gender:	Male	9 40.9%	13 59.1%	0 0.0%	22 100.0%
	Female	7 46.7%	7 46.7%	1 6.7%	15 100.0%
	No Response	0 0.0%	0 0.0%	0 0.0%	0 0.0%
	Total (Column)	16	20	1	37
	Count (n)	-	-	-	-
		Count (n) 37			

Frequency Row Percent		5. Have you changed majors or career direction?			
		Yes	No	Not Applicable	Total (Row)
Ethnicity / Race:	White	15 44.1%	18 52.9%	1 2.9%	34 100.0%
	African American	0 0.0%	0 0.0%	0 0.0%	0 0.0%
	Asian	0 0.0%	0 0.0%	0 0.0%	0 0.0%
	Hispanic	1 100.0%	0 0.0%	0 0.0%	1 100.0%
	Native American	0 0.0%	0 0.0%	0 0.0%	0 0.0%
	Other	0 0.0%	0 0.0%	0 0.0%	0 0.0%
	No Response	0 0.0%	2 100.0%	0 0.0%	2 100.0%
	Total (Column)	16	20	1	37
	Count (n)	-	-	-	-
		Count (n) 37			

6. High school counseling services.



6. High school counseling services.

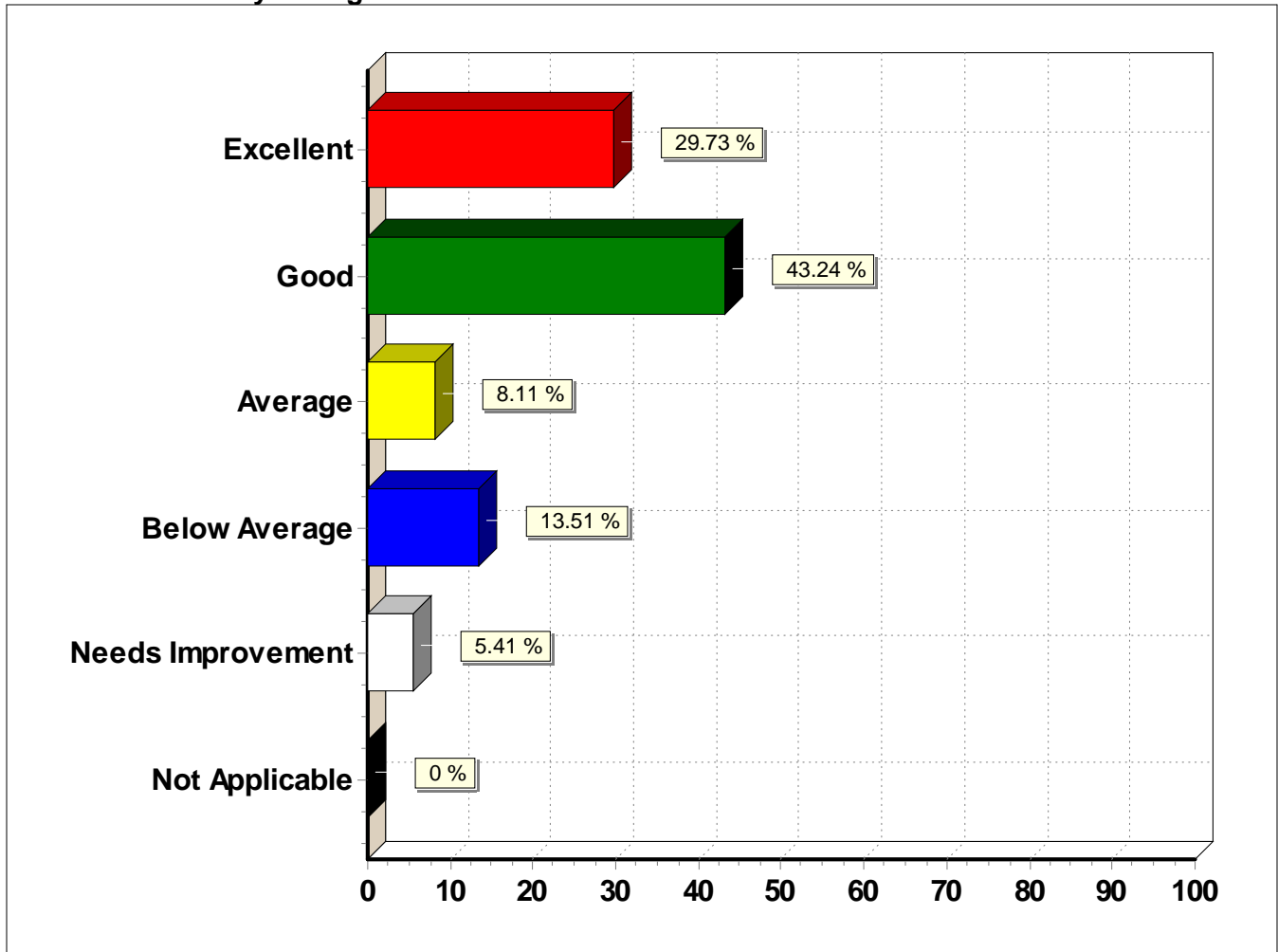
Response (n = 37)	Frequency	Percent
Excellent	7	18.9%
Good	8	21.6%
Average	9	24.3%
Below Average	4	10.8%
Needs Improvement	4	10.8%
Not Applicable	5	13.5%

Question 6 disaggregated into cross tabulations by Ethnic Origin and Gender

Frequency Row Percent		6. High school counseling services.						Total (Row)
		Excellent	Good	Average	Below Average	Needs Improvement	Not Applicable	
Gender:	Male	4 18.2%	4 18.2%	6 27.3%	2 9.1%	2 9.1%	4 18.2%	22 100.0%
	Female	3 20.0%	4 26.7%	3 20.0%	2 13.3%	2 13.3%	1 6.7%	15 100.0%
	No Response	0 0.0%	0 0.0%	0 0.0%	0 0.0%	0 0.0%	0 0.0%	0 0.0%
	Total (Column)	7 -	8 -	9 -	4 -	4 -	5 -	37 -
Count (n) 37								

Frequency Row Percent		6. High school counseling services.						Total (Row)
		Excellent	Good	Average	Below Average	Needs Improvement	Not Applicable	
Ethnicity / Race:	White	7 20.6%	8 23.5%	8 23.5%	3 8.8%	3 8.8%	5 14.7%	34 100.0%
	African American	0 0.0%	0 0.0%	0 0.0%	0 0.0%	0 0.0%	0 0.0%	0 0.0%
	Asian	0 0.0%	0 0.0%	0 0.0%	0 0.0%	0 0.0%	0 0.0%	0 0.0%
	Hispanic	0 0.0%	0 0.0%	0 0.0%	0 0.0%	1 100.0%	0 0.0%	1 100.0%
	Native American	0 0.0%	0 0.0%	0 0.0%	0 0.0%	0 0.0%	0 0.0%	0 0.0%
	Other	0 0.0%	0 0.0%	0 0.0%	0 0.0%	0 0.0%	0 0.0%	0 0.0%
	No Response	0 0.0%	0 0.0%	1 50.0%	1 50.0%	0 0.0%	0 0.0%	2 100.0%
	Total (Column)	7 -	8 -	9 -	4 -	4 -	5 -	37 -
Count (n) 37								

7. How useful was your high school education?



7. How useful was your high school education?

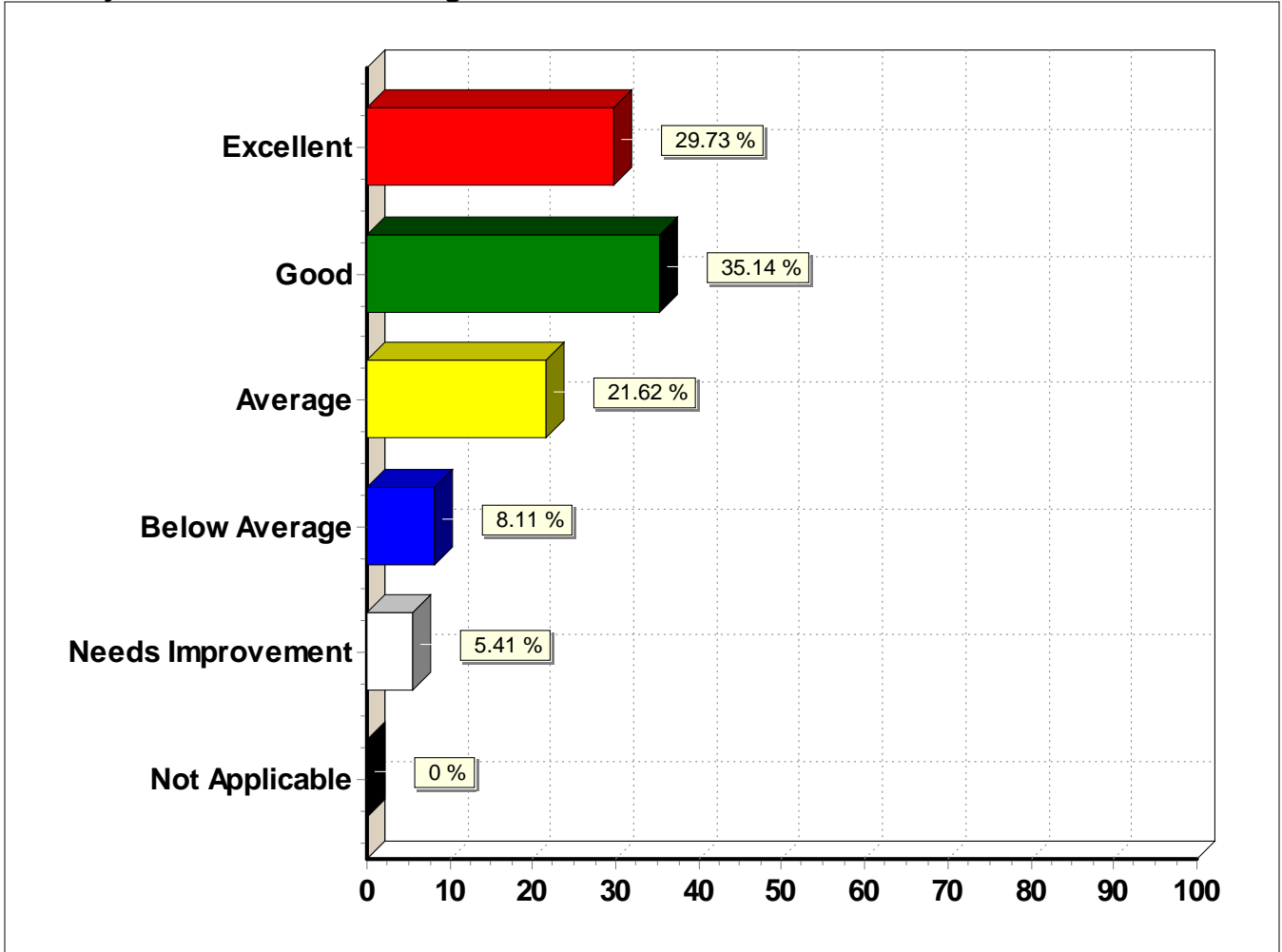
Response (n = 37)	Frequency	Percent
Excellent	11	29.7%
Good	16	43.2%
Average	3	8.1%
Below Average	5	13.5%
Needs Improvement	2	5.4%
Not Applicable	0	0.0%

Question 7 disaggregated into cross tabulations by Ethnic Origin and Gender

Frequency Row Percent		7. How useful was your high school education?						
		Excellent	Good	Average	Below Average	Needs Improvement	Not Applicable	Total (Row)
Gender:	Male	6 27.3%	7 31.8%	2 9.1%	5 22.7%	2 9.1%	0 0.0%	22 100.0%
	Female	5 33.3%	9 60.0%	1 6.7%	0 0.0%	0 0.0%	0 0.0%	15 100.0%
	No Response	0 0.0%	0 0.0%	0 0.0%	0 0.0%	0 0.0%	0 0.0%	0 0.0%
	Total (Column)	11 -	16 -	3 -	5 -	2 -	0 -	37 -
	Count (n)	37						

Frequency Row Percent		7. How useful was your high school education?						
		Excellent	Good	Average	Below Average	Needs Improvement	Not Applicable	Total (Row)
Ethnicity / Race:	White	11 32.4%	15 44.1%	2 5.9%	4 11.8%	2 5.9%	0 0.0%	34 100.0%
	African American	0 0.0%	0 0.0%	0 0.0%	0 0.0%	0 0.0%	0 0.0%	0 0.0%
	Asian	0 0.0%	0 0.0%	0 0.0%	0 0.0%	0 0.0%	0 0.0%	0 0.0%
	Hispanic	0 0.0%	0 0.0%	1 100.0%	0 0.0%	0 0.0%	0 0.0%	1 100.0%
	Native American	0 0.0%	0 0.0%	0 0.0%	0 0.0%	0 0.0%	0 0.0%	0 0.0%
	Other	0 0.0%	0 0.0%	0 0.0%	0 0.0%	0 0.0%	0 0.0%	0 0.0%
	No Response	0 0.0%	1 50.0%	0 0.0%	1 50.0%	0 0.0%	0 0.0%	2 100.0%
	Total (Column)	11 -	16 -	3 -	5 -	2 -	0 -	37 -
	Count (n)	37						

8. Rate your academic effort in high school.



8. Rate your academic effort in high school.

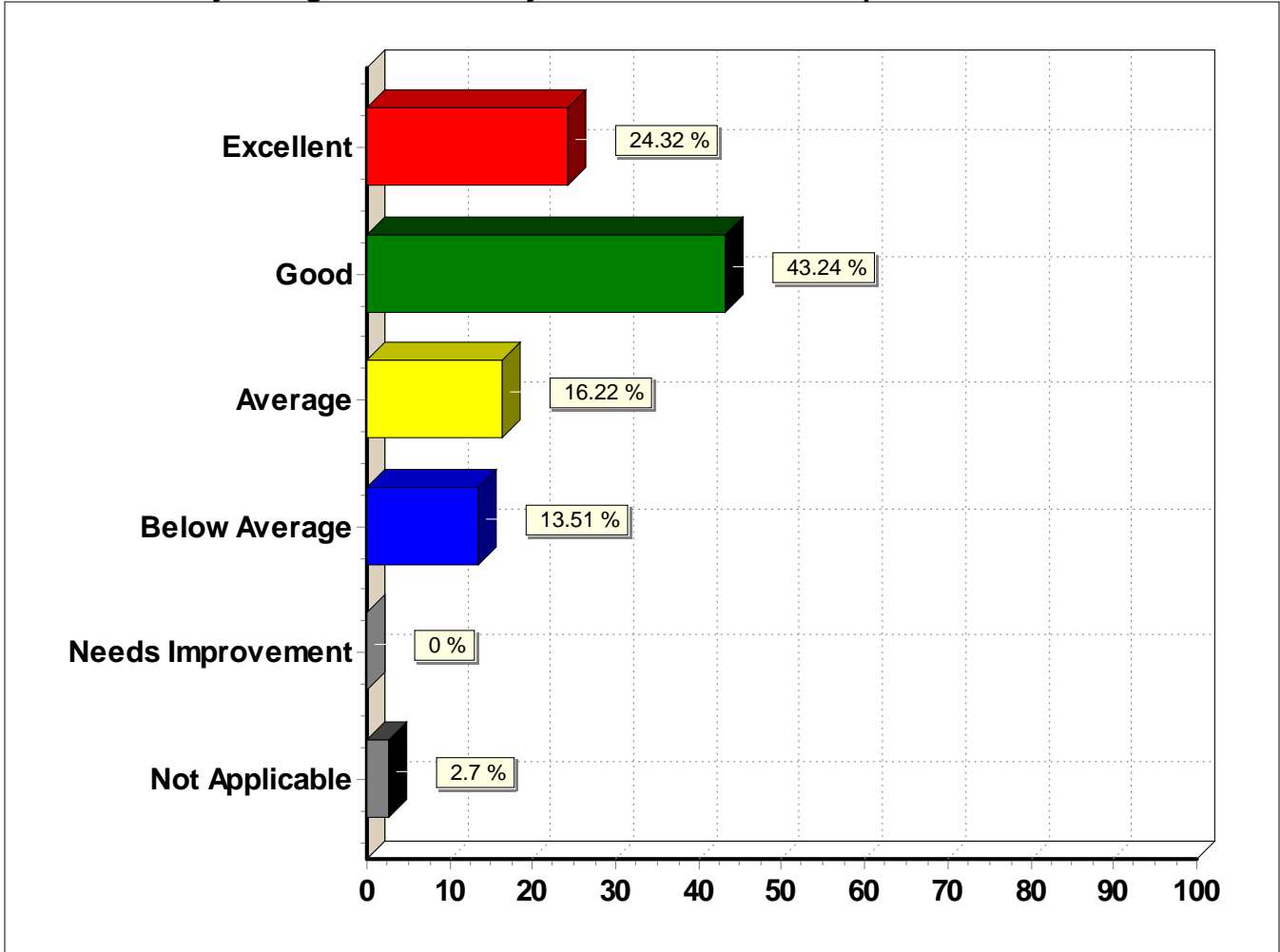
Response (n = 37)	Frequency	Percent
Excellent	11	29.7%
Good	13	35.1%
Average	8	21.6%
Below Average	3	8.1%
Needs Improvement	2	5.4%
Not Applicable	0	0.0%

Question 8 disaggregated into cross tabulations by Ethnic Origin and Gender

Frequency Row Percent		8. Rate your academic effort in high school.						
		Excellent	Good	Average	Below Average	Needs Improvement	Not Applicable	Total (Row)
Gender:	Male	6 27.3%	5 22.7%	6 27.3%	3 13.6%	2 9.1%	0 0.0%	22 100.0%
	Female	5 33.3%	8 53.3%	2 13.3%	0 0.0%	0 0.0%	0 0.0%	15 100.0%
	No Response	0 0.0%	0 0.0%	0 0.0%	0 0.0%	0 0.0%	0 0.0%	0 0.0%
	Total (Column)	11 -	13 -	8 -	3 -	2 -	0 -	37 -
	Count (n)	37						

Frequency Row Percent		8. Rate your academic effort in high school.						
		Excellent	Good	Average	Below Average	Needs Improvement	Not Applicable	Total (Row)
Ethnicity / Race:	White	10 29.4%	13 38.2%	7 20.6%	2 5.9%	2 5.9%	0 0.0%	34 100.0%
	African American	0 0.0%	0 0.0%	0 0.0%	0 0.0%	0 0.0%	0 0.0%	0 0.0%
	Asian	0 0.0%	0 0.0%	0 0.0%	0 0.0%	0 0.0%	0 0.0%	0 0.0%
	Hispanic	0 0.0%	0 0.0%	1 100.0%	0 0.0%	0 0.0%	0 0.0%	1 100.0%
	Native American	0 0.0%	0 0.0%	0 0.0%	0 0.0%	0 0.0%	0 0.0%	0 0.0%
	Other	0 0.0%	0 0.0%	0 0.0%	0 0.0%	0 0.0%	0 0.0%	0 0.0%
	No Response	1 50.0%	0 0.0%	0 0.0%	1 50.0%	0 0.0%	0 0.0%	2 100.0%
	Total (Column)	11 -	13 -	8 -	3 -	2 -	0 -	37 -
	Count (n)	37						

9. How well did your high school teach you to think and to solve problems?



9. How well did your high school teach you to think and to solve problems?

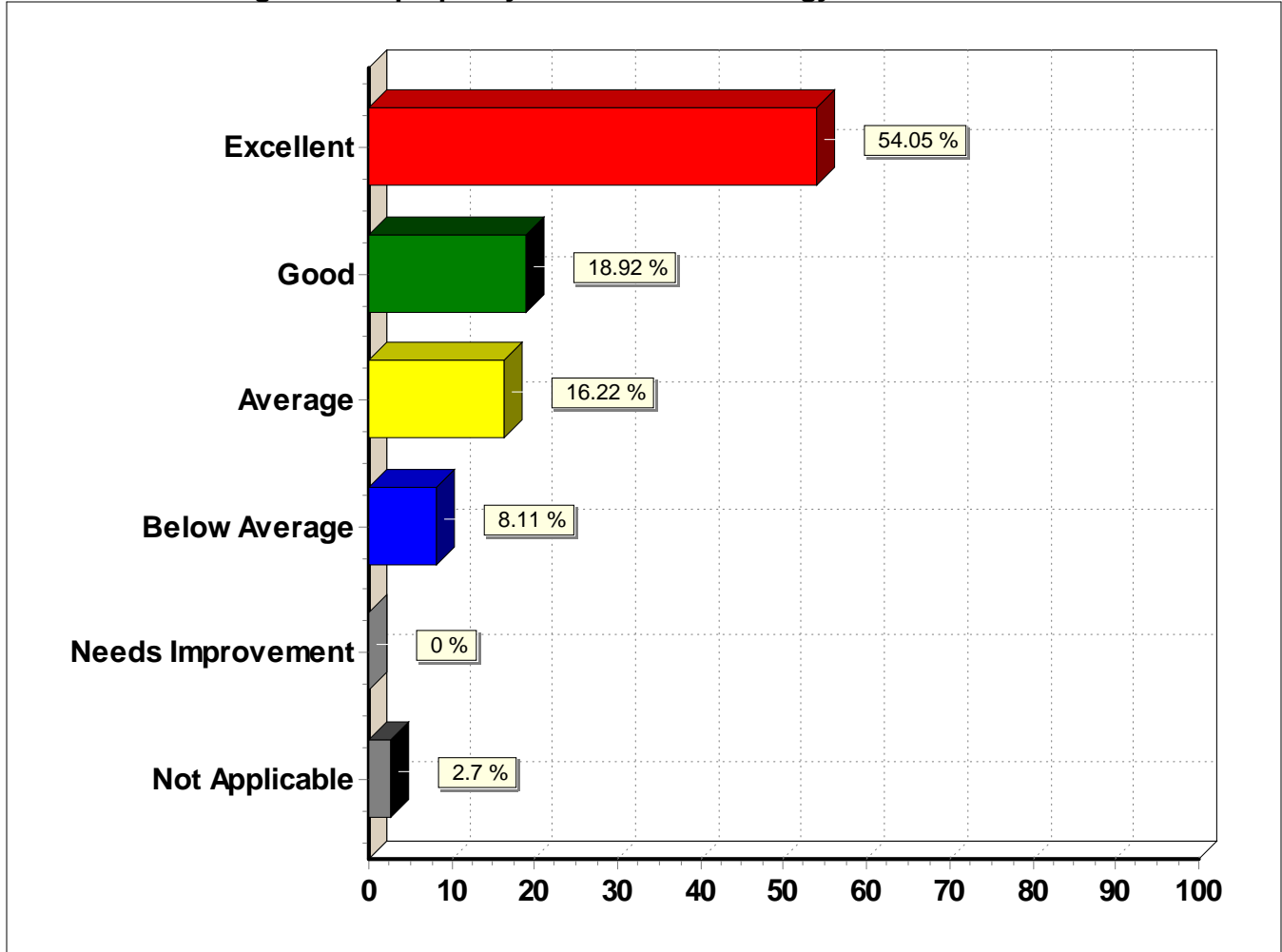
Response (n = 37)	Frequency	Percent
Excellent	9	24.3%
Good	16	43.2%
Average	6	16.2%
Below Average	5	13.5%
Needs Improvement	0	0.0%
Not Applicable	1	2.7%

Question 9 disaggregated into cross tabulations by Ethnic Origin and Gender

Frequency Row Percent		9. How well did your high school teach you to think and to solve problems?						
		Excellent	Good	Average	Below Average	Needs Improvement	Not Applicable	Total (Row)
Gender:	Male	6 27.3%	9 40.9%	2 9.1%	5 22.7%	0 0.0%	0 0.0%	22 100.0%
	Female	3 20.0%	7 46.7%	4 26.7%	0 0.0%	0 0.0%	1 6.7%	15 100.0%
	No Response	0 0.0%	0 0.0%	0 0.0%	0 0.0%	0 0.0%	0 0.0%	0 0.0%
	Total (Column)	9 -	16 -	6 -	5 -	0 -	1 -	37 -
	Count (n)	37						

Frequency Row Percent		9. How well did your high school teach you to think and to solve problems?						
		Excellent	Good	Average	Below Average	Needs Improvement	Not Applicable	Total (Row)
Ethnicity / Race:	White	9 26.5%	16 47.1%	5 14.7%	4 11.8%	0 0.0%	0 0.0%	34 100.0%
	African American	0 0.0%	0 0.0%	0 0.0%	0 0.0%	0 0.0%	0 0.0%	0 0.0%
	Asian	0 0.0%	0 0.0%	0 0.0%	0 0.0%	0 0.0%	0 0.0%	0 0.0%
	Hispanic	0 0.0%	0 0.0%	1 100.0%	0 0.0%	0 0.0%	0 0.0%	1 100.0%
	Native American	0 0.0%	0 0.0%	0 0.0%	0 0.0%	0 0.0%	0 0.0%	0 0.0%
	Other	0 0.0%	0 0.0%	0 0.0%	0 0.0%	0 0.0%	0 0.0%	0 0.0%
	No Response	0 0.0%	0 0.0%	0 0.0%	1 50.0%	0 0.0%	1 50.0%	2 100.0%
	Total (Column)	9 -	16 -	6 -	5 -	0 -	1 -	37 -
	Count (n)	37						

10. How well did high school prepare you to utilize technology?



10. How well did high school prepare you to utilize technology?

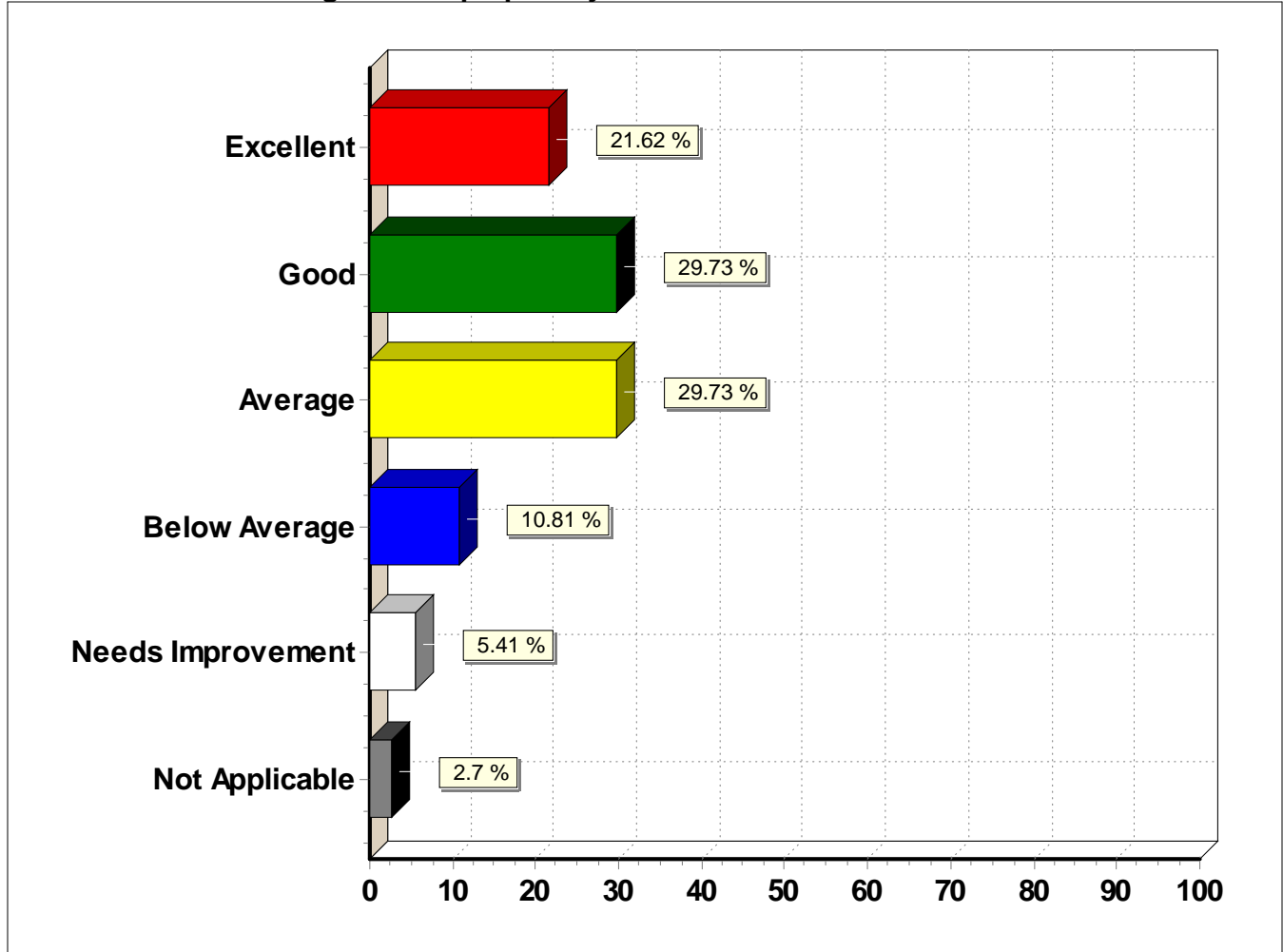
Response (n = 37)	Frequency	Percent
Excellent	20	54.1%
Good	7	18.9%
Average	6	16.2%
Below Average	3	8.1%
Needs Improvement	0	0.0%
Not Applicable	1	2.7%

Question 10 disaggregated into cross tabulations by Ethnic Origin and Gender

Frequency Row Percent		10. How well did high school prepare you to utilize technology?						Total (Row)
		Excellent	Good	Average	Below Average	Needs Improvement	Not Applicable	
Gender:	Male	11 50.0%	4 18.2%	3 13.6%	3 13.6%	0 0.0%	1 4.5%	22 100.0%
	Female	9 60.0%	3 20.0%	3 20.0%	0 0.0%	0 0.0%	0 0.0%	15 100.0%
	No Response	0 0.0%	0 0.0%	0 0.0%	0 0.0%	0 0.0%	0 0.0%	0 0.0%
	Total (Column)	20 -	7 -	6 -	3 -	0 -	1 -	37 -
	Count (n)	37						

Frequency Row Percent		10. How well did high school prepare you to utilize technology?						Total (Row)
		Excellent	Good	Average	Below Average	Needs Improvement	Not Applicable	
Ethnicity / Race:	White	20 58.8%	6 17.6%	5 14.7%	3 8.8%	0 0.0%	0 0.0%	34 100.0%
	African American	0 0.0%	0 0.0%	0 0.0%	0 0.0%	0 0.0%	0 0.0%	0 0.0%
	Asian	0 0.0%	0 0.0%	0 0.0%	0 0.0%	0 0.0%	0 0.0%	0 0.0%
	Hispanic	0 0.0%	0 0.0%	1 100.0%	0 0.0%	0 0.0%	0 0.0%	1 100.0%
	Native American	0 0.0%	0 0.0%	0 0.0%	0 0.0%	0 0.0%	0 0.0%	0 0.0%
	Other	0 0.0%	0 0.0%	0 0.0%	0 0.0%	0 0.0%	0 0.0%	0 0.0%
	No Response	0 0.0%	1 50.0%	0 0.0%	0 0.0%	0 0.0%	1 50.0%	2 100.0%
	Total (Column)	20 -	7 -	6 -	3 -	0 -	1 -	37 -
	Count (n)	37						

11. Rate how well the high school prepared you to enter the workforce.



11. Rate how well the high school prepared you to enter the workforce.

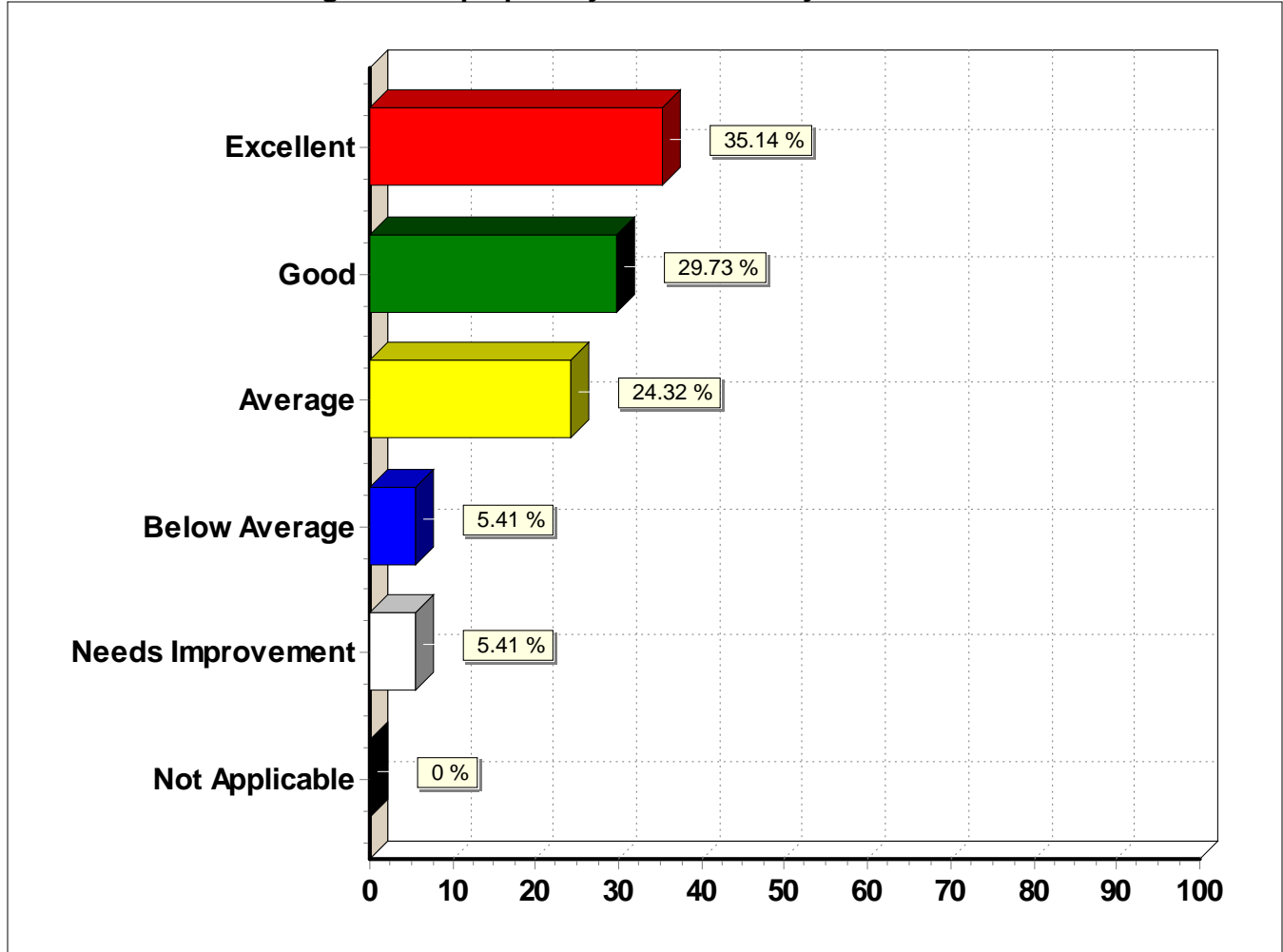
Response (n = 37)	Frequency	Percent
Excellent	8	21.6%
Good	11	29.7%
Average	11	29.7%
Below Average	4	10.8%
Needs Improvement	2	5.4%
Not Applicable	1	2.7%

Question 11 disaggregated into cross tabulations by Ethnic Origin and Gender

Frequency Row Percent		11. Rate how well the high school prepared you to enter the workforce.						Total (Row)
		Excellent	Good	Average	Below Average	Needs Improvement	Not Applicable	
Gender:	Male	5 22.7%	5 22.7%	7 31.8%	2 9.1%	2 9.1%	1 4.5%	22 100.0%
	Female	3 20.0%	6 40.0%	4 26.7%	2 13.3%	0 0.0%	0 0.0%	15 100.0%
	No Response	0 0.0%	0 0.0%	0 0.0%	0 0.0%	0 0.0%	0 0.0%	0 0.0%
	Total (Column)	8 -	11 -	11 -	4 -	2 -	1 -	37 -
Count (n) 37								

Frequency Row Percent		11. Rate how well the high school prepared you to enter the workforce.						Total (Row)
		Excellent	Good	Average	Below Average	Needs Improvement	Not Applicable	
Ethnicity / Race:	White	8 23.5%	11 32.4%	10 29.4%	3 8.8%	2 5.9%	0 0.0%	34 100.0%
	African American	0 0.0%	0 0.0%	0 0.0%	0 0.0%	0 0.0%	0 0.0%	0 0.0%
	Asian	0 0.0%	0 0.0%	0 0.0%	0 0.0%	0 0.0%	0 0.0%	0 0.0%
	Hispanic	0 0.0%	0 0.0%	0 0.0%	1 100.0%	0 0.0%	0 0.0%	1 100.0%
	Native American	0 0.0%	0 0.0%	0 0.0%	0 0.0%	0 0.0%	0 0.0%	0 0.0%
	Other	0 0.0%	0 0.0%	0 0.0%	0 0.0%	0 0.0%	0 0.0%	0 0.0%
	No Response	0 0.0%	0 0.0%	1 50.0%	0 0.0%	0 0.0%	1 50.0%	2 100.0%
	Total (Column)	8 -	11 -	11 -	4 -	2 -	1 -	37 -
Count (n) 37								

12. Rate how well the high school prepared you to continue your education.



12. Rate how well the high school prepared you to continue your education.

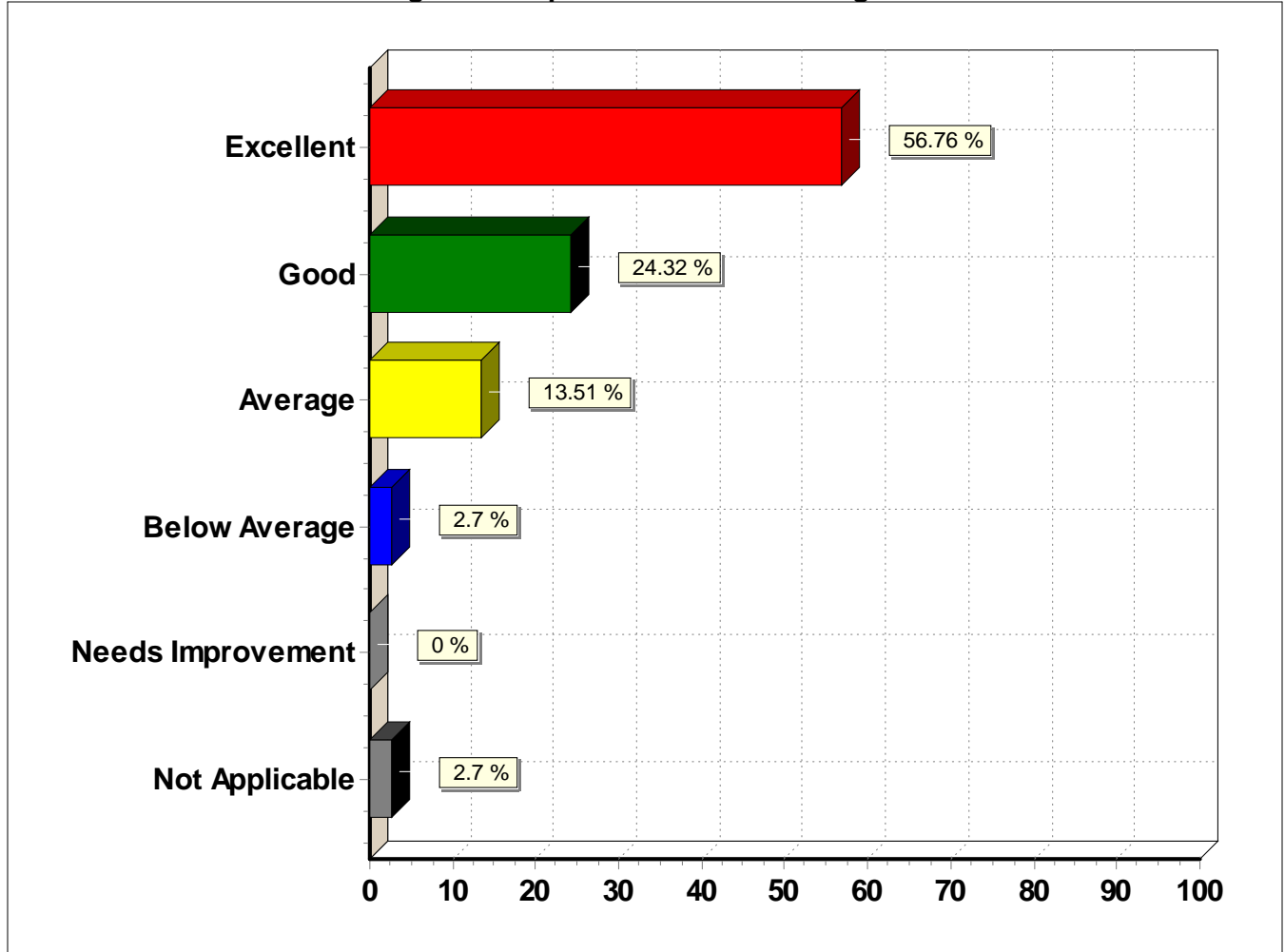
Response (n = 37)	Frequency	Percent
Excellent	13	35.1%
Good	11	29.7%
Average	9	24.3%
Below Average	2	5.4%
Needs Improvement	2	5.4%
Not Applicable	0	0.0%

Question 12 disaggregated into cross tabulations by Ethnic Origin and Gender

Frequency Row Percent		12. Rate how well the high school prepared you to continue your education.						
		Excellent	Good	Average	Below Average	Needs Improvement	Not Applicable	Total (Row)
Gender:	Male	8 36.4%	7 31.8%	4 18.2%	1 4.5%	2 9.1%	0 0.0%	22 100.0%
	Female	5 33.3%	4 26.7%	5 33.3%	1 6.7%	0 0.0%	0 0.0%	15 100.0%
	No Response	0 0.0%	0 0.0%	0 0.0%	0 0.0%	0 0.0%	0 0.0%	0 0.0%
	Total (Column)	13	11	9	2	2	0	37
	Count (n)	-	-	-	-	-	-	-

Frequency Row Percent		12. Rate how well the high school prepared you to continue your education.						
		Excellent	Good	Average	Below Average	Needs Improvement	Not Applicable	Total (Row)
Ethnicity / Race:	White	13 38.2%	11 32.4%	7 20.6%	2 5.9%	1 2.9%	0 0.0%	34 100.0%
	African American	0 0.0%	0 0.0%	0 0.0%	0 0.0%	0 0.0%	0 0.0%	0 0.0%
	Asian	0 0.0%	0 0.0%	0 0.0%	0 0.0%	0 0.0%	0 0.0%	0 0.0%
	Hispanic	0 0.0%	0 0.0%	1 100.0%	0 0.0%	0 0.0%	0 0.0%	1 100.0%
	Native American	0 0.0%	0 0.0%	0 0.0%	0 0.0%	0 0.0%	0 0.0%	0 0.0%
	Other	0 0.0%	0 0.0%	0 0.0%	0 0.0%	0 0.0%	0 0.0%	0 0.0%
	No Response	0 0.0%	0 0.0%	1 50.0%	0 0.0%	1 50.0%	0 0.0%	2 100.0%
	Total (Column)	13	11	9	2	2	0	37
	Count (n)	-	-	-	-	-	-	-

13. Please rate how well the high school provided a safe learning environment.



13. Please rate how well the high school provided a safe learning environment.

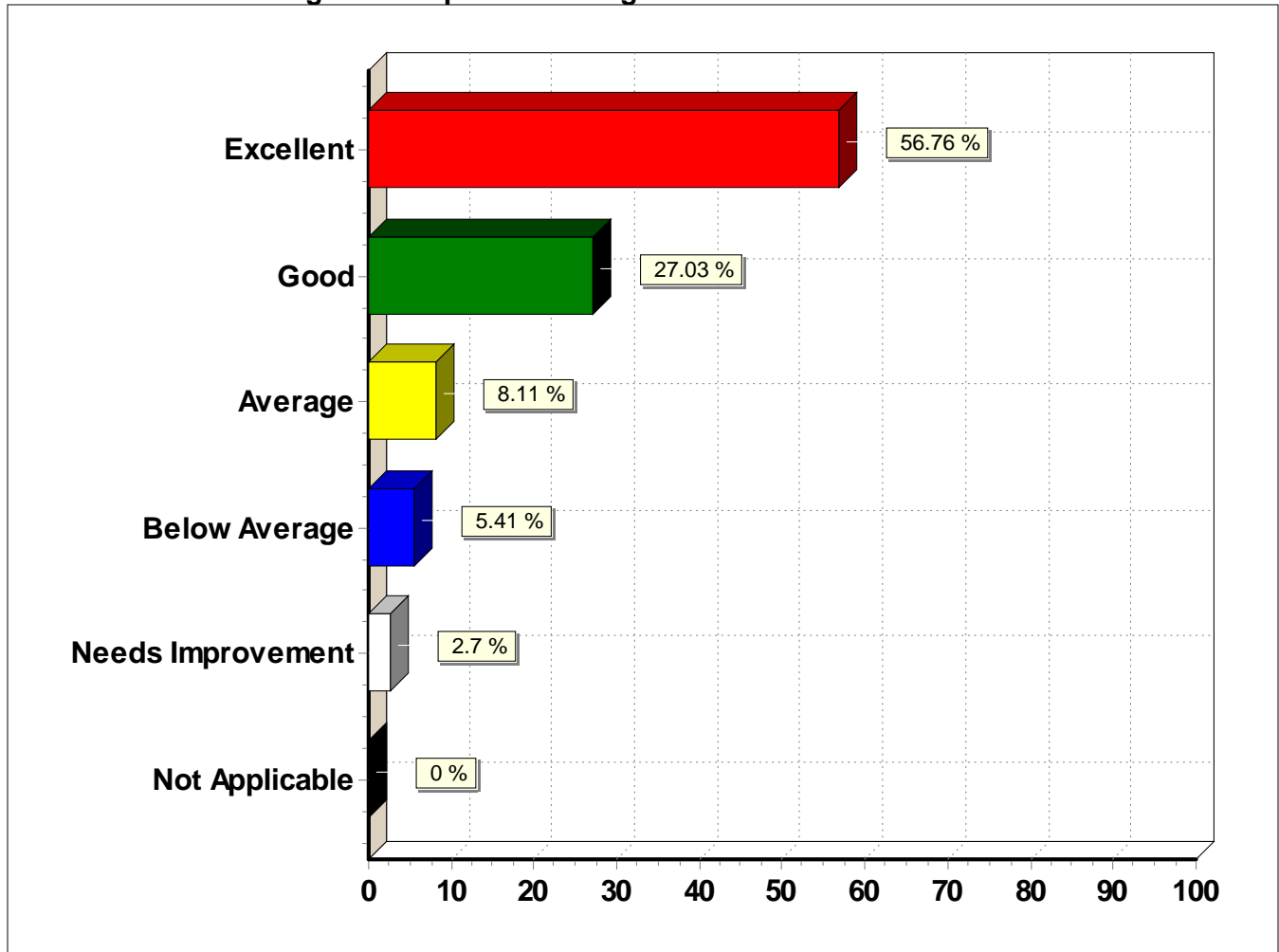
Response (n = 37)	Frequency	Percent
Excellent	21	56.8%
Good	9	24.3%
Average	5	13.5%
Below Average	1	2.7%
Needs Improvement	0	0.0%
Not Applicable	1	2.7%

Question 13 disaggregated into cross tabulations by Ethnic Origin and Gender

Frequency Row Percent		13. Please rate how well the high school provided a safe learning environment.						
		Excellent	Good	Average	Below Average	Needs Improvement	Not Applicable	Total (Row)
Gender:	Male	11 50.0%	6 27.3%	3 13.6%	1 4.5%	0 0.0%	1 4.5%	22 100.0%
	Female	10 66.7%	3 20.0%	2 13.3%	0 0.0%	0 0.0%	0 0.0%	15 100.0%
	No Response	0 0.0%	0 0.0%	0 0.0%	0 0.0%	0 0.0%	0 0.0%	0 0.0%
	Total (Column)	21 -	9 -	5 -	1 -	0 -	1 -	37 -
	Count (n)	37						

Frequency Row Percent		13. Please rate how well the high school provided a safe learning environment.						
		Excellent	Good	Average	Below Average	Needs Improvement	Not Applicable	Total (Row)
Ethnicity / Race:	White	20 58.8%	9 26.5%	4 11.8%	1 2.9%	0 0.0%	0 0.0%	34 100.0%
	African American	0 0.0%	0 0.0%	0 0.0%	0 0.0%	0 0.0%	0 0.0%	0 0.0%
	Asian	0 0.0%	0 0.0%	0 0.0%	0 0.0%	0 0.0%	0 0.0%	0 0.0%
	Hispanic	0 0.0%	0 0.0%	1 100.0%	0 0.0%	0 0.0%	0 0.0%	1 100.0%
	Native American	0 0.0%	0 0.0%	0 0.0%	0 0.0%	0 0.0%	0 0.0%	0 0.0%
	Other	0 0.0%	0 0.0%	0 0.0%	0 0.0%	0 0.0%	0 0.0%	0 0.0%
	No Response	1 50.0%	0 0.0%	0 0.0%	0 0.0%	0 0.0%	1 50.0%	2 100.0%
	Total (Column)	21 -	9 -	5 -	1 -	0 -	1 -	37 -
	Count (n)	37						

14. How well did the high school provide a drug-free environment?



14. How well did the high school provide a drug-free environment?

Response (n = 37)	Frequency	Percent
Excellent	21	56.8%
Good	10	27.0%
Average	3	8.1%
Below Average	2	5.4%
Needs Improvement	1	2.7%
Not Applicable	0	0.0%

Question 14 disaggregated into cross tabulations by Ethnic Origin and Gender

Frequency Row Percent		14. How well did the high school provide a drug-free environment?						
		Excellent	Good	Average	Below Average	Needs Improvement	Not Applicable	Total (Row)
Gender:	Male	10 45.5%	7 31.8%	2 9.1%	2 9.1%	1 4.5%	0 0.0%	22 100.0%
	Female	11 73.3%	3 20.0%	1 6.7%	0 0.0%	0 0.0%	0 0.0%	15 100.0%
	No Response	0 0.0%	0 0.0%	0 0.0%	0 0.0%	0 0.0%	0 0.0%	0 0.0%
	Total (Column)	21 -	10 -	3 -	2 -	1 -	0 -	37 -
	Count (n)	37						

Frequency Row Percent		14. How well did the high school provide a drug-free environment?						
		Excellent	Good	Average	Below Average	Needs Improvement	Not Applicable	Total (Row)
Ethnicity / Race:	White	20 58.8%	9 26.5%	3 8.8%	1 2.9%	1 2.9%	0 0.0%	34 100.0%
	African American	0 0.0%	0 0.0%	0 0.0%	0 0.0%	0 0.0%	0 0.0%	0 0.0%
	Asian	0 0.0%	0 0.0%	0 0.0%	0 0.0%	0 0.0%	0 0.0%	0 0.0%
	Hispanic	0 0.0%	1 100.0%	0 0.0%	0 0.0%	0 0.0%	0 0.0%	1 100.0%
	Native American	0 0.0%	0 0.0%	0 0.0%	0 0.0%	0 0.0%	0 0.0%	0 0.0%
	Other	0 0.0%	0 0.0%	0 0.0%	0 0.0%	0 0.0%	0 0.0%	0 0.0%
	No Response	1 50.0%	0 0.0%	0 0.0%	1 50.0%	0 0.0%	0 0.0%	2 100.0%
	Total (Column)	21 -	10 -	3 -	2 -	1 -	0 -	37 -
	Count (n)	37						

Want More?

Additional copies of your bound report \$7.50 each

Want Even More???

Data Disaggregation:

Gender

Report showing only male responses and report showing only female responses

Generates 2 Reports \$30.00

Present Status:

Report showing responses for each of the following categories:

Work Full Time, Work Part Time, Military, 4 Year College, 2 Year College, Vocational / Technical School

Generates 6 Reports \$60.00

Ethnic Origin:

Report showing responses for each of the following categories:

White/Caucasian, African American, Asian, Hispanic, Native American, & Other

Generates 6 Reports \$55.00

Yes/No Question

Report showing responses for those answering a question "Yes" and a report showing those that answered "No" to the same question (you choose which yes/no question you want segregated)

Generates 2 Reports \$30.00

Excellent/Good/Average/Below Average/Needs Improvement Question

Report showing responses for those answering a question "Excellent", those answering "Good", those answering "Average", those answering "Below Average", and a report showing those that answered "Needs Improvement" to the same question (you choose which A/B/C/D/F question you want segregated)

Generates 5 Reports \$50.00

Customized Reports

You may customize your data segregation to focus on a group meeting specific criteria.

(For example: A report showing those attending a 4-Year College, answered "yes" to question #1 and answered question #10 with "Excellent".

Generates 1 Report Starting at \$25.00

Data File

A delimited text file emailed to you so you can manipulate the data at your leisure. ... \$25.00

Electronic Report (Acrobat PDF File)

An exact duplicate of your bound paper report emailed to you as a convenient pdf file which can be read with Acrobat Reader. Makes it easy to share your results with a group or cut and paste to other applications \$50.00

Actual shipping charges applied to all orders.

Thank You!

**For the opportunity
to help you**



your graduates' success!

**Your patronage is
greatly appreciated!**

**The Graduate Follow-up Specialists
@ LifeTrack Services
1-800-738-6466**