

AI GUIDANCE FOR STUDENTS



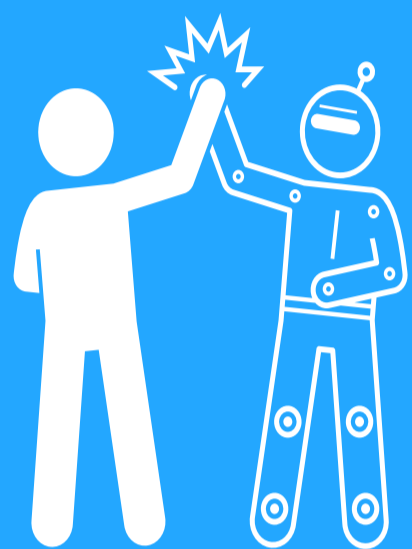
Work with your teachers to determine the extent to which AI can be used. This is largely based on what is being assessed. Our goal is to give feedback that improves *your* understanding and academic growth. Your teachers grading and giving feedback on AI-generated work does not help you learn.



AI? YAY!



AI? No Way!



Study Partner

AI tools can generate practice problems and give you detailed feedback on your answers. Think of it like a very attentive personalized study partner.



On-Demand Tutor

Have a conversation with AI about any topic... in any language at any reading level. Practice your prompting by asking it questions, seeking clarification, and coming up with creative ways to remember information.



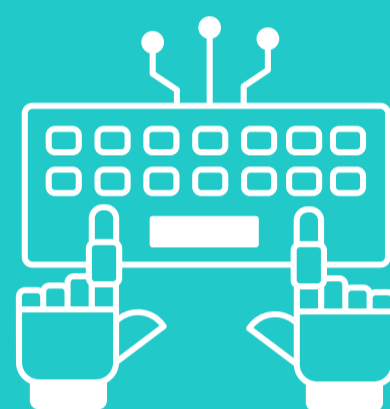
Feedback and Tips

Use AI to get initial feedback on your work. You can even upload the criteria for the assignment and ask for tips to improve! It's important to critically evaluate and decide which suggestions to incorporate.



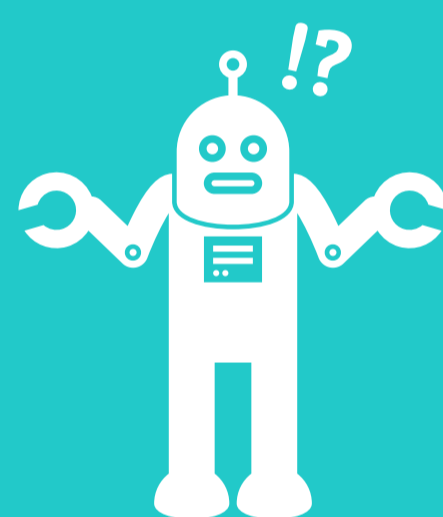
Capture the Magic!

Use the range of tools in *Magic School Student* to improve your skills and understanding. Remember to ask your teacher about how it can be used!



Don't Submit AI Work as Your Own

Using AI to complete essays, reports, assignments, or any other coursework and submitting it as if it were your own work is a form of plagiarism. It also does not help you learn!



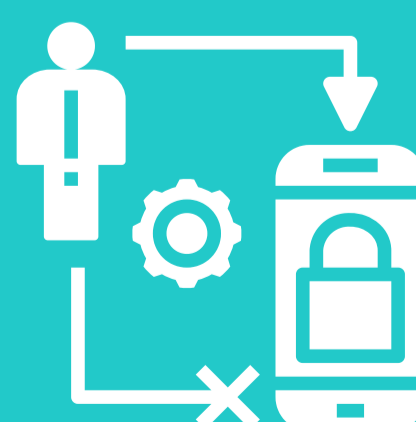
Don't Assume AI is Right

AI is not a reliable source. It does not always produce accurate information. AI can lie, make mistakes, and hallucinate, just like humans.



Don't Let AI Tools Research for You

Generative AI is not a reliable research tool. It is not great at giving you accurate (or even real) sources. It's also not very good at APA references or citations.



Don't Input Personal Data

Giving personal details to AI tools is risky because there's a chance that this info might get stolen or used in ways you didn't agree to. If you are using AI to process data, always anonymize.