

Arts & Enrichment

After School Care is available at Lauri Ann West Community Center for children in the Fox Chapel School District through 5th grade. That includes all of the elementary schools.

The students are bussed to Lauri Ann West Community Center and arrive around 3:45-4:00 pm. Pick up is by 6:00 pm. Snacks and meals are not provided. This two-hour program serves as a resource for busy parents with children in grades K-5. We offer care on Fox Chapel half days and some full-day care.

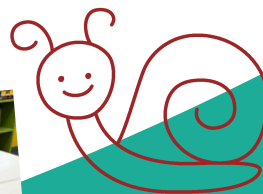
During After School Care we offer our Arts & Enrichment Program (A & E). It is a unique combination of enriching activities designed to inspire and complement individual interests in a relaxed atmosphere. All activities are led by professional educators with a balance of learning, play, physical activity and outdoor time (weather permitting). The program is certified by the Pennsylvania Office of Child Development and Early Learning.

The A&E program strives to present art activities, group projects and play that stimulate creativity and wonder while promoting a broader awareness and engagement with the world. This active, hands-on approach to learning promotes self-confidence and exploration while it provides children the opportunity to pursue their own unique, expressive solutions. Activities include: Art lessons and activities exploring a specific artist, musician, culture or historical period; gardening; science experiments; sewing; exercise and outdoor play. Some time is also allotted each day for exploration of individual interests, such as reading, building with various materials, games, and creative, imaginative play.

We also ask that each family pay a non-refundable \$175 registration fee to reserve a spot.

Parents can choose from 2, 3, 4 or 5 days of A&E. The days of the week must be consistent each week.

Scholarships are available.




LAURI ANN WEST
COMMUNITY CENTER

412-828-8566
www.lauriannwestcc.org
aande@lauriannwestcc.org

YOU BELONG HERE!