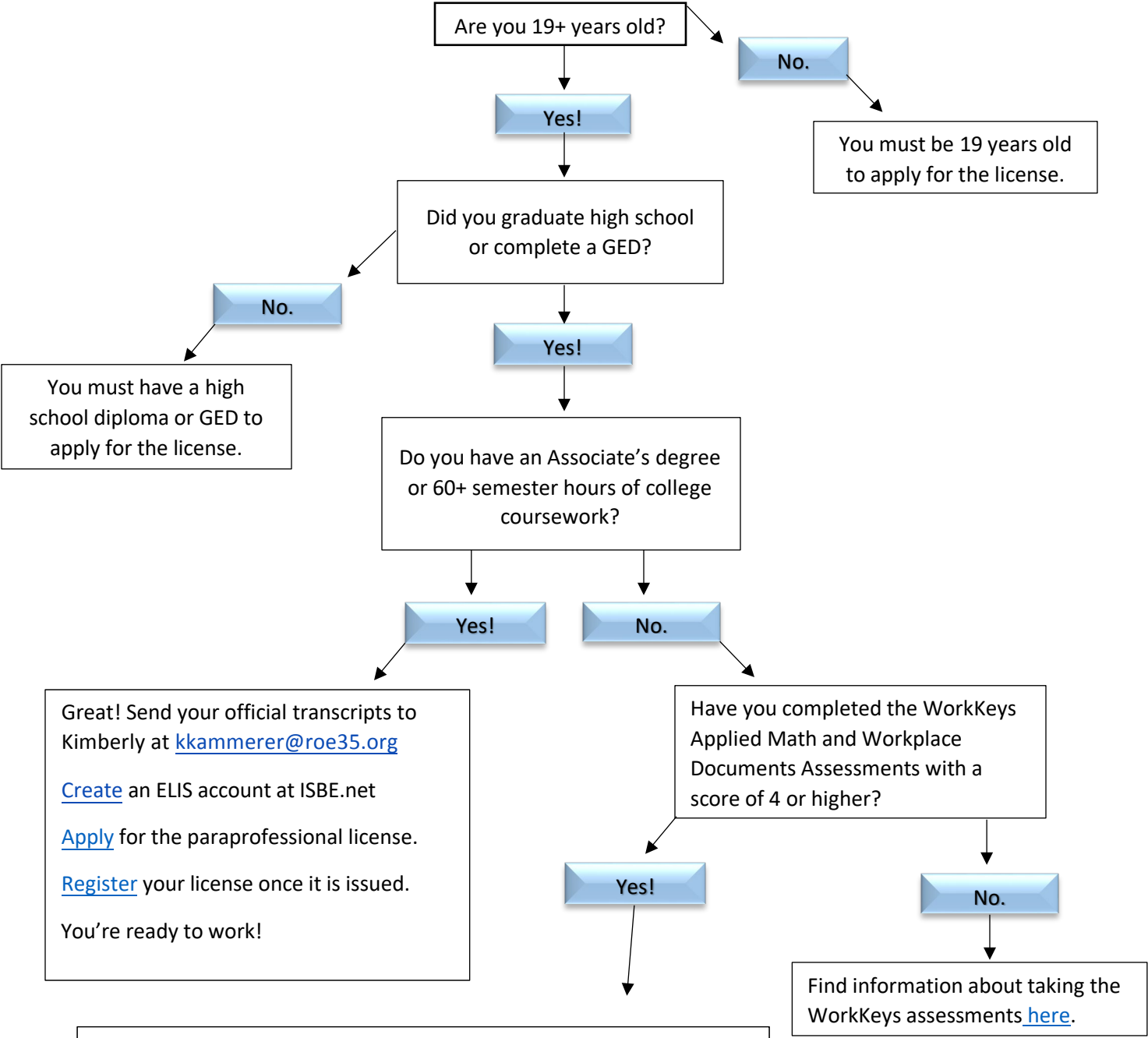


How Do I Apply for a Paraprofessional License?



Great! Send high school diploma/transcript with graduation date or GED with completion day AND your score of 4 or higher on both tests to Kimberly Kammerer at kkammerer@roe35.org
[Create](#) an ELIS account at ISBE.net
[Apply](#) for the paraprofessional license.
[Register](#) your license once it is issued.
You're ready to work!