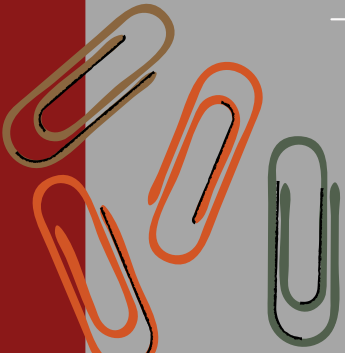
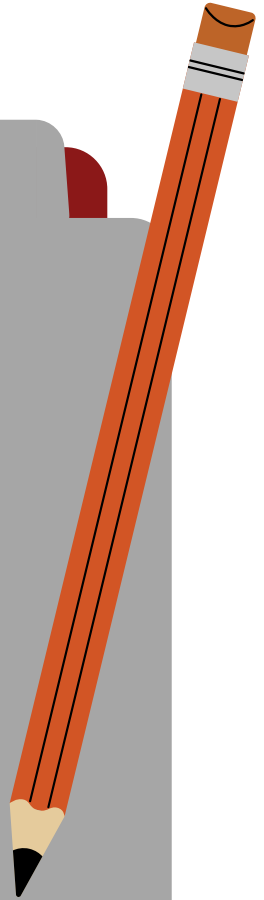




Middle School

2024-2025



Imagine Edgenuity



- 1** The Edgenuity program is used for grade levels 6th to 12th
- 2** Each student will be enrolled in 6 courses per semester
- 3** A course is worth 5 credits per semester/10 credits per year with passing grade
- 4** Earn a minimum of 60 credits per school year



Course Selection



- Complete Course Selection Form for all incoming 7th and 8th graders

- Pick Courses from the 2024-25 Course Elective List

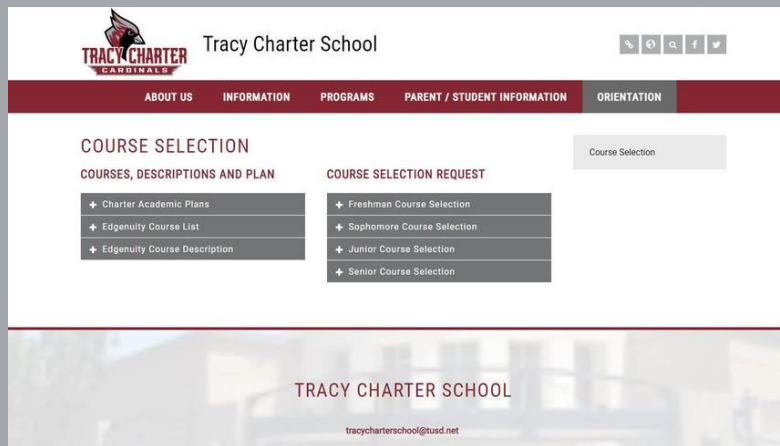
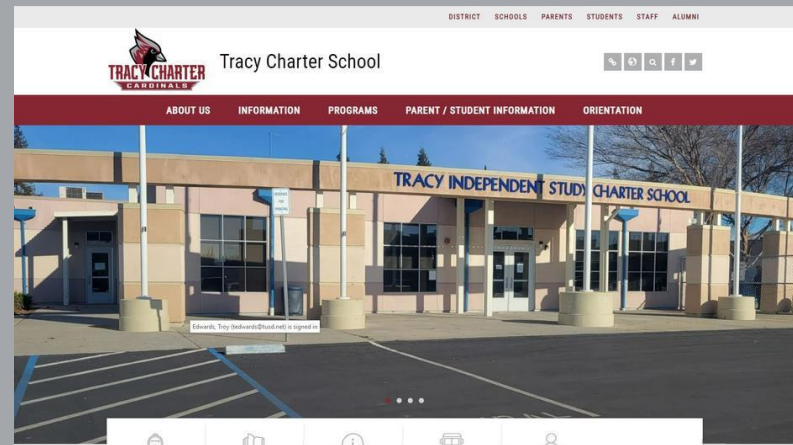
- Utilize the 2024-25 Course Catalog to review course descriptions

- 6th grade students have a set of courses already selected (No form is necessary)

- Course Selection Forms due by 4/30/2024

Tracy Charter Website

Information & Resources



Resources for Middle School



[Incoming 7th & 8th Grade Course Sheet](#)

[Middle School Coursework](#)

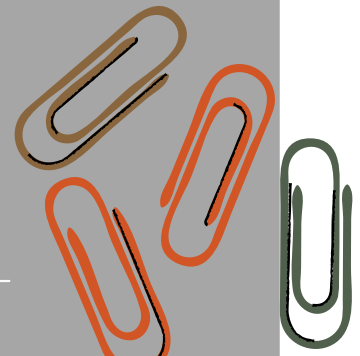
[Middle School Course Catalog](#)

Important Items



Weekly Meetings: This is a **MANDATORY** requirement to participate in the Tracy Charter School program.

- Missed Weekly Meetings due to emergencies must be rescheduled and completed.
 - After missing 3 Weekly Meetings the Administration will follow up with parent.
 - If missed meetings continue to be an issue, the student will be returned to their home school.
-





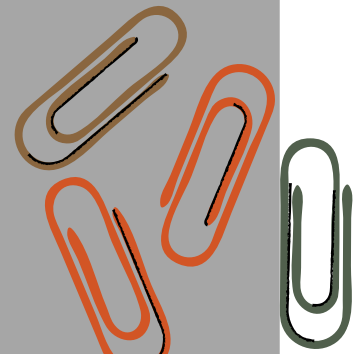
Important Items

Academic Honesty Policy

All work submitted by students should be a true reflection of their effort and ability. If it is not, then the student has demonstrated unacceptable behavior. The following instances are considered cheating:

- Claiming credit for work that is not the product of one's own honest effort.
- Providing unwarranted access to materials or information so that others may dishonestly claim credit.
- Submitting work done entirely or in part by another person.
- Giving test answers to another student or getting test answers from another student.
- Representation of another person's words or ideas as your own by not properly citing the source and giving the author credit.
- Copying from the internet and/or from another student.
- Knowledge and tolerating of the foregoing circumstances.

Any behavior, which can be defined as cheating, represents a violation of mutual trust and respect essential to education. Students who cheat should expect to be confronted by their teacher and be subject to penalties.





Important Items

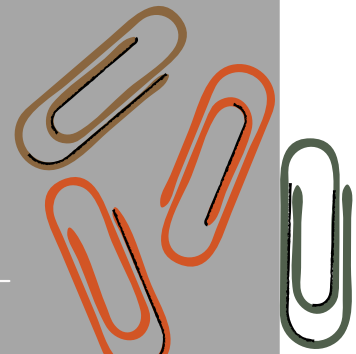
Course Map

The screenshot shows a course map for a unit titled "Storms". The map is organized into a vertical timeline with three main sections:

- Warm-Up** (FEB 03): "Get ready for the lesson." with a "Your Time: 7m 58s" indicator. A blue checkmark icon is visible to the left.
- Instruction** (FEB 03): "What causes thunderstorms, tornadoes, and hurricanes?" with a "Your Time: 39m 28s" indicator. A blue checkmark icon is visible to the left.
- Summary** (FEB 06): "Review and connect what you learned" with a "Your Time: 2m" indicator. An information icon (i) is visible to the left.

At the bottom of the screenshot, there is a small notification: "teams.microsoft.com is sharing your screen." with "Stop sharing" and "Hide" buttons. A copyright notice "© 2023 Imagine Learning, LLC. All rights reserved." and a link "About Us" are also visible.

- The Course Map will be flagged with a Warning that you are behind
- It will tell you how many activities that are late
- It will tell you how long it should take to complete late activities



How to Calculate a Grade Point Average

GPA's are important as you prepare for high school

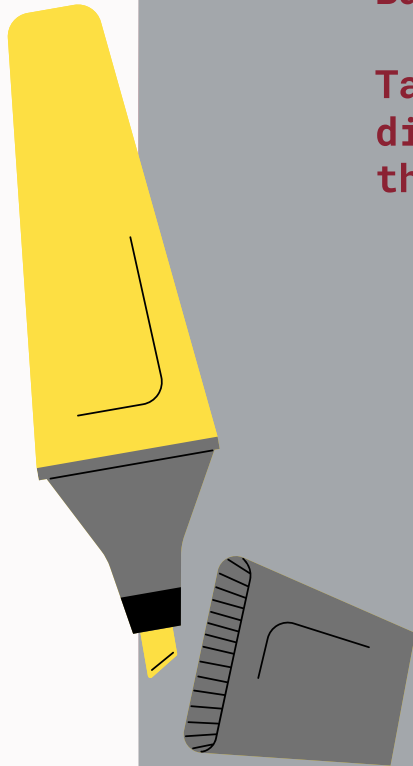
Basic Math.....

Take the number courses completed and divide by the grade points earned. Using this table:

- A = 4 grade points
 - B = 3 grade points
 - C = 2 grade points
 - D = 1 grade point
 - F = 0 grade points
-

SAMPLE

6 course with these grades.....



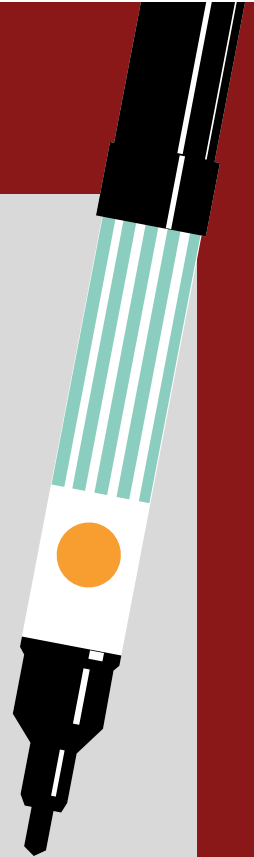
GPA Calculation



REPORT CARD GRADES

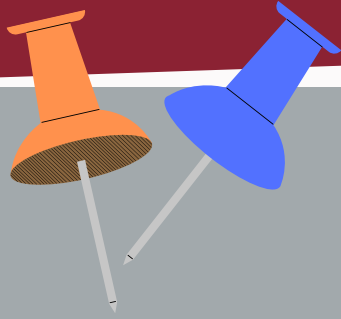
1. English = B 3 grade points
2. Math = C 2 grade points
3. Science = B 3 grade points
4. History = A 4 grade points
5. PE = A 4 grade points
6. Art = A 4 grade points

TOTAL Grade Points = 20 grade points



**20 (grade points) divided by 6 (# of courses) =
3.33 Grade Point Average**

You must pass all courses with a grade of D or better in order to earn credit



QUESTIONS?

Due Date for Incoming 7th & 8th Course Selection Forms is
Tuesday, April 30th!