



Bus Routing

Safety & Efficiencies



Meet the Team

Ivy Fleming, Asst. Superintendent of Finance
and Operations

Vicki Burback, Director of Transportation

Cheryl Burns, Asst. Director of
Transportation





Why do we need to make changes to our current routes?

- Driver Bus Shortage
- Safety Risks
- Consistent Routes for Students & Families
- Inclusive for all students
- Continuity for FSD79 Bus Drivers
- Less Mileage Traveled

Transportation Task Force Objective

To improve sustainability of our transportation services and address the bus driver shortage by re-establishing bus routes that reduce door-to-door services and cul-de-sac utilization.

Transportation Task Force Members

5 Parents

2 Bus Drivers

1 Asst. Principal

2 Transportation Administrators

1 Central Office Administrator



Illinois State Board
of Education

School Bus Safety

**Guidelines
Development**



Illinois Department of
Transportation

School Safety Busing

How are routes developed with the new guidelines?

Fremont School District 79 Route Guidelines

Safety

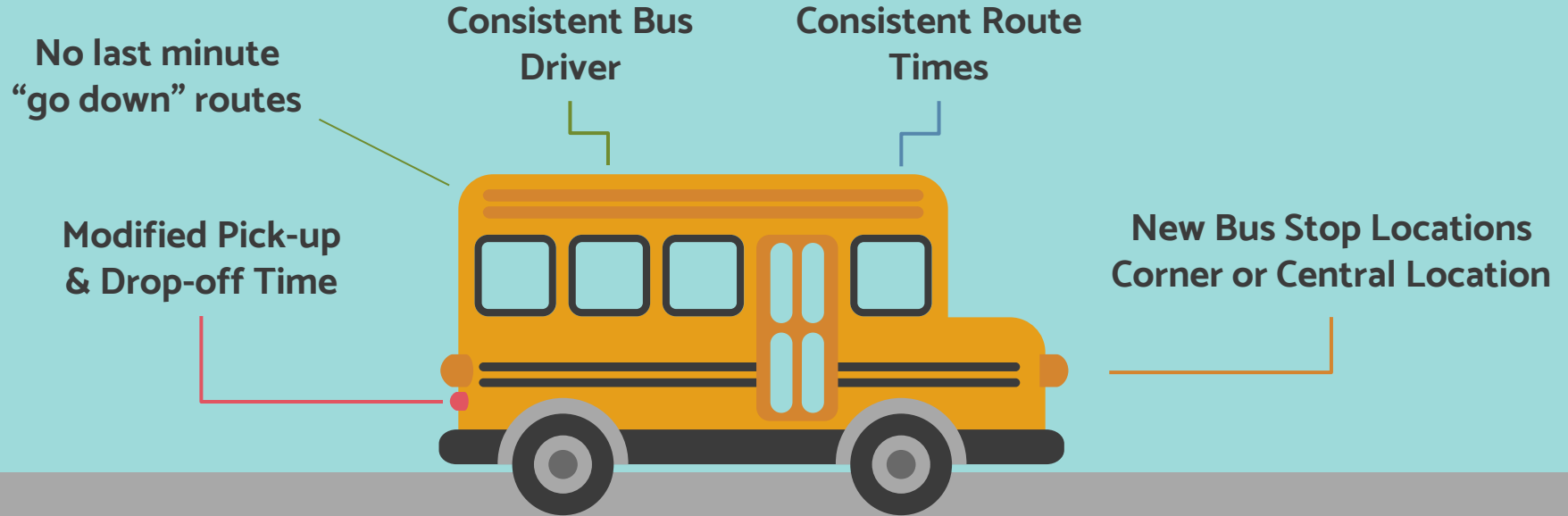
- Age of the student
- Walking distance to bus stop
- Hazardous walking routes (volume of traffic, speed limit)
- Neighborhood Configuration (long drive ways, no corners, no sidewalks)
- Accident prone routes

Efficiency

- Less Miles Traveled
- Less Carbon Emission
- Additional Bus Drivers
- Special Transportation Serviced by FSD79 Staff & Buses
- Accommodating Route Additions/Changes
- Maximize Seating Capacity



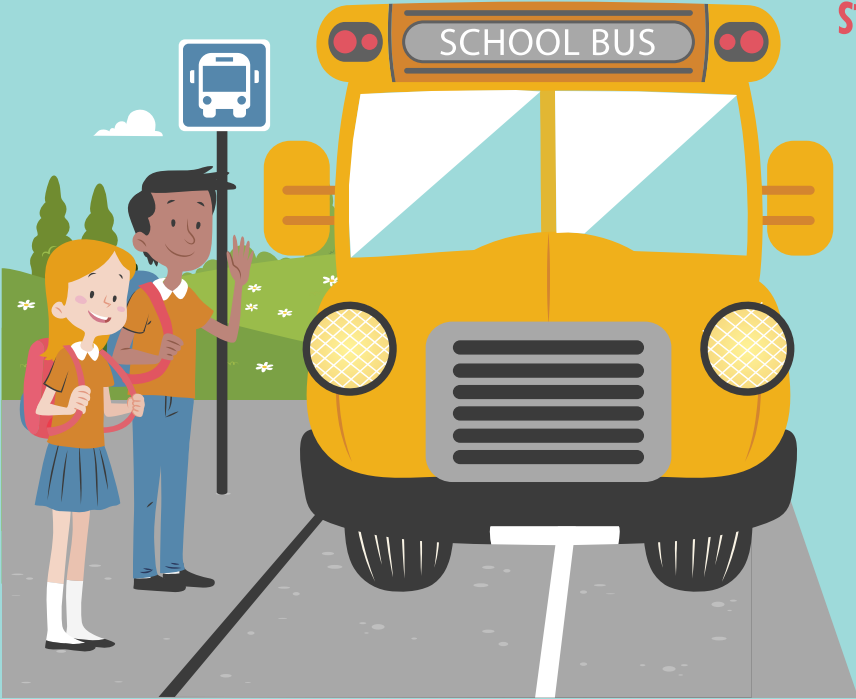
What does the new routing guidelines mean to students & parents?



Known Questions

My Neighborhood doesn't have sidewalks. How can you ensure student safety walking in the snowy and dark winter months?

- The District has strictly aligned to the safety guidelines presented by the following governing bodies:
 - *Illinois Board of Education*
 - *Illinois Department of Transportation*
- The District reviewed the revised routing process with local law enforcement to verify approach.
- The District conferred with other local districts who have similar routing to learn from experiences.
- Communication shared with local law enforcement, villages, township, and home owner associations of changes.



Known Questions

My Neighborhood doesn't have sidewalks. How can you ensure student safety walking in the snowy and dark winter months?

Other ideas for families IF they prefer to take these step:

- Have an adult walk the student to the bus stop
- Create a rotating parent bus stop supervision schedule with neighbors
- Remind students of proper bus stop & walking safety expectations
- Add reflective tape to student's backpack

Neighborhoods with limited or no corners and long driveways will have more centrally located bus stops.



NEW Routing Information Released Timeline

**Transportation routing is a complex process
Routes are based on registration data from new and returning students
Final routes are developed over the entire month of July
Final routes will be communicated to families by AUGUST 5TH.**

**On an annual basis routes will be evaluated and designed to best support the
transportation operations.**





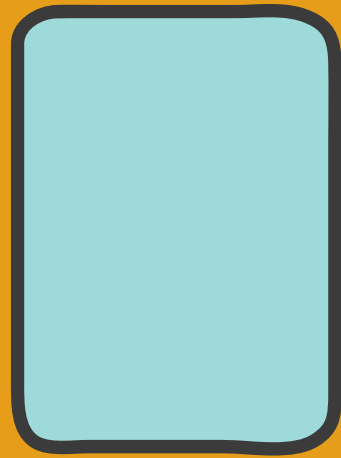
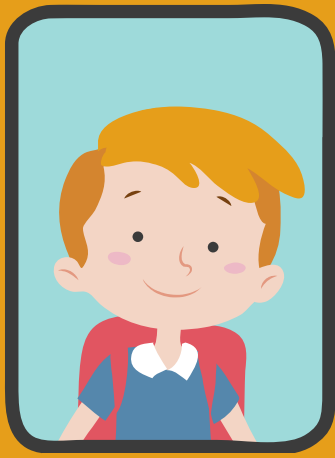
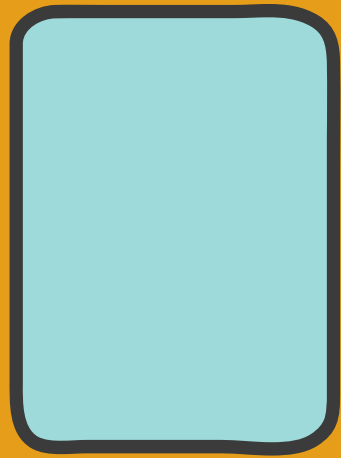
Questions

Are you taking into consideration the length of routes?

Has the District Investigated a GPS parent apps?

If no student is visibly present, what is the protocol?

Has the District looked into an electronic bus tagging system?



Questions

<https://forms.gle/EWCQoGDiezUHaugd6>

Thank you!