

Outsourced Operations District Effectiveness Report April 8, 2024

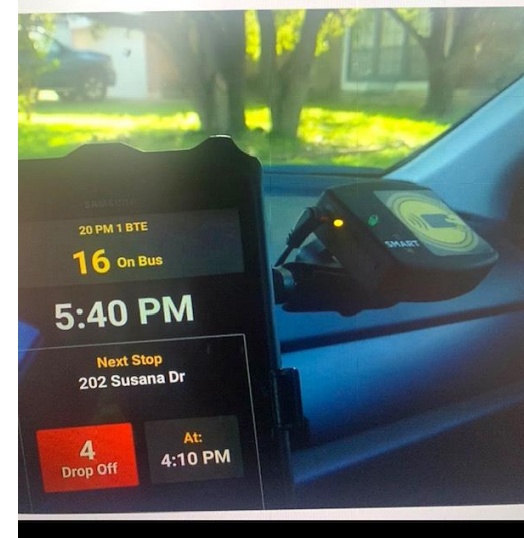


Transportation 2023-2024



Transportation Information

- On Time Performance – 97% daily average
- Fully staffed – but continue to hire staff to accommodate for growth for the 24-25 school year
- Annual support of NEF through the Angel Tree Program by providing labor and buses to deliver all of the hundreds of donated gifts to each of the campuses for distribution
- First full year utilizing Smart Tag for student bus ridership tracking
- We continue student roll calls to capture daily student ridership



Routes & Field Trips

2022/2023

- Daily Operations
 - 125 Regular Ed Routes
 - 41 Special Ed Routes
 - 30 Midday Routes
 - For 15,450 miles per day
- Field Trips
 - 1,700 Field Trips
 - 106,000 miles for all school year
- Transporting approx. 16,000 students/day
- Year End Mileage – 2,700,000 miles

2023/2024

- Daily Operations
 - 123 Regular Ed Routes
 - 43 Special Ed Routes
 - 44 Midday Routes
 - For 16,200 miles per day
- Field Trips
 - 1,900 Field Trips
 - 170,000 miles this school year to date
- Transporting approx. 18,000 students/day
- Year End Projection – 2,900,000 miles



ABM Custodial Services

Hourly staff

- Currently at 92% staffed. 40% of current staff has been here since ABM was awarded the contract in 2016. 21 employees have over 20 years working with NISD.

Quality Control

- Site inspections scores average=96% positive.

Customer satisfaction

- Principal/Office Manager survey scores shows expectations being met.

Employee Recognition

- Employees recognized monthly and yearly with awards and presentations.



District Partnership

- \$5,000 hole sponsor for NEF golf tournament
- \$5,000 table sponsorship at NEF Gala
- Participation in Emergent Bilingual Families Vendor Fair at NISD Administration building
- Donated Supplies for NISD Community Big Event





2023-2024 Food Service



Leadership Team



LOCAL
RESTAURANT
ROW
GLOBAL FLAVORS. LOCAL FAVORITES.

SY 23 - 24: Growing & Serving



General Info

- Meals served to date - 2,830,423
- Meals per labor hours 17.2
- Currently Staffed at 96%
- Completed Cool Cafe marketing in new elementary schools

Service Challenges

- Vendor Logistics and Distribution – continued food and supply shortages

Successes

- Opened 3 Elementaries & 1 Middle School
- Implementation of new POS – Mosaic
- Concessions updated for credit card payment
- Reopening coffee stations in BNHS & EHS
- Vendor participation in Local Restaurant Row is 100%



Community Engagement

- NEF Partnership
 - Total annual sponsorship worth \$12K.
 - Participated in various community events.
- Life Skills Class at Medlin Middle School, Executive Chef Anthony Moore presented at the event.
- Justin Elementary Career Day - Executive Chef Benjamin Willhite in attendance.
- Offered various tasting tables at elementary schools.



AlphaBEST Education

Serving over 1,000 students weekly

- Northwest ISD employee's children served: 229 kids
- Partnered with Texas Workforce to provide care for those needing financial assistance
- Provide after school care at all new elementary schools on the horizon

Employing over 90 Team Members

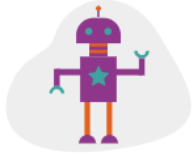
- Partnership with Northwest ISD CTE Teaching and Training Program to hire and train Northwest ISD High School students

Family Friendly Flexible Programming

- School year offering 1–5-day weekly enrollment options
- Full Day camp offered for several non-instructional days and school holidays



After School is Where Adventure Begins



STEM



WORLD LANGUAGES &
CULTURES



FITNESS & WELLNESS

- AlphaBEST Extended Day includes World Languages & Cultures, STEM, Fitness & Wellness, MAKER, Arts & Entertainment
- High-quality, caring staff, with a program designed to meet the changing needs of working parents
- AlphaBEST Extended Day offered at all elementary schools



ARTS &
ENTERTAINMENT



MAKER



PERSONAL SKILL
BUILDING

Enrichment Classes by AlphaBEST



- Enrichment vendor management services available to families at all Northwest Elementary schools throughout the school year
- Vendors offering Sports and Art Enrichment classes for 1-hour after school with Spring and Fall sessions available
- AlphaBEST oversees vendor contracts, promotes the programs, enrolls families, and supervises each session

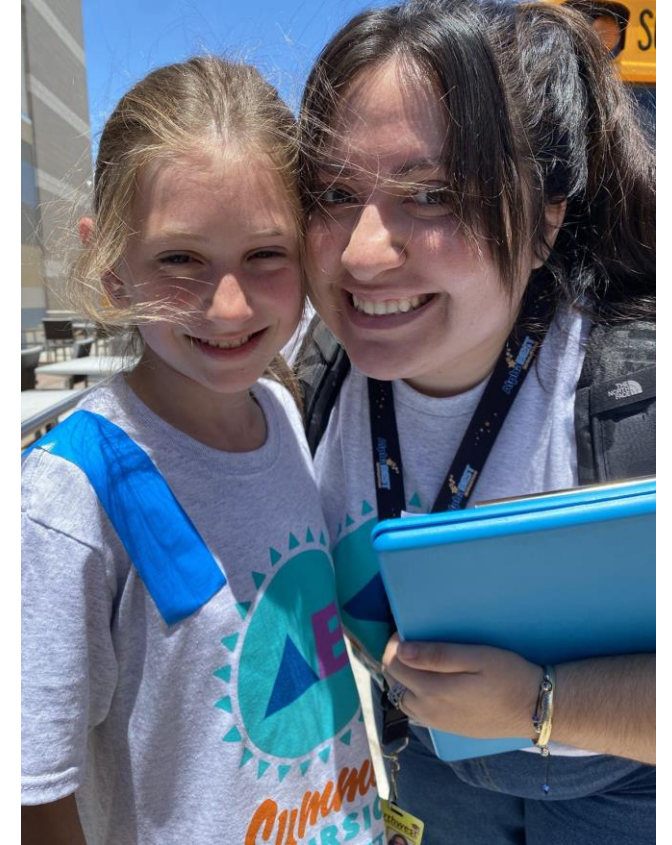
Summer Camp Excursions

Full-day summer camp offered at three convenient locations

- Operating 7 am – 6:30 pm
- Weekly enrollment options from 3–5-days
- Discounts for Northwest ISD team members

Partners with Northwest ISD Transportation

- Provides bus transportation to and from weekly field trips, including all AlphaBEST North Texas districts



Northwest Education Foundation Partnership



North Texas Giving Day

- Matched \$5,000

Cornhole Raffle Sponsor

- Contributed \$2,000

Big Shots Presenting Sponsor

- Contributed \$15,000

Party With a Purpose Gala

- Contributed \$2,000

Alphabest Education On the Horizon

- Providing care for NISD Employees during the Engage Conference
- Participating in Emergent Bilingual vendor event
- Offering more care for NISD Employees during professional development dates



Discussion

