



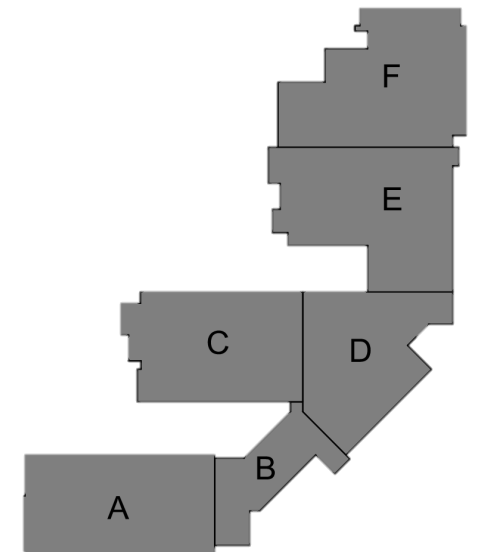
Mary E. Britton Middle School

➤ **Completed Work:**

- Structural Steel at Storm Shelter
- Handrails and Ladders at Area A Platform
- Complete CMU at Platform G301
- Install Freezer/Cooler Thermal Break and Prep Slab in Kitchen
- Prep Topping Slab at G301 Corridor
- Block Fill Beginning in Area C
- Dry in Cafeteria and Entrance Lobby
- Complete Domestic and Sanitary Testing Area C and at Kitchen
- Continue Pulling Feeder Wire at all electrical panels
- Continuing to Excavate Geothermal Lines to Building Connection

➤ **Upcoming Work/Look Ahead:**

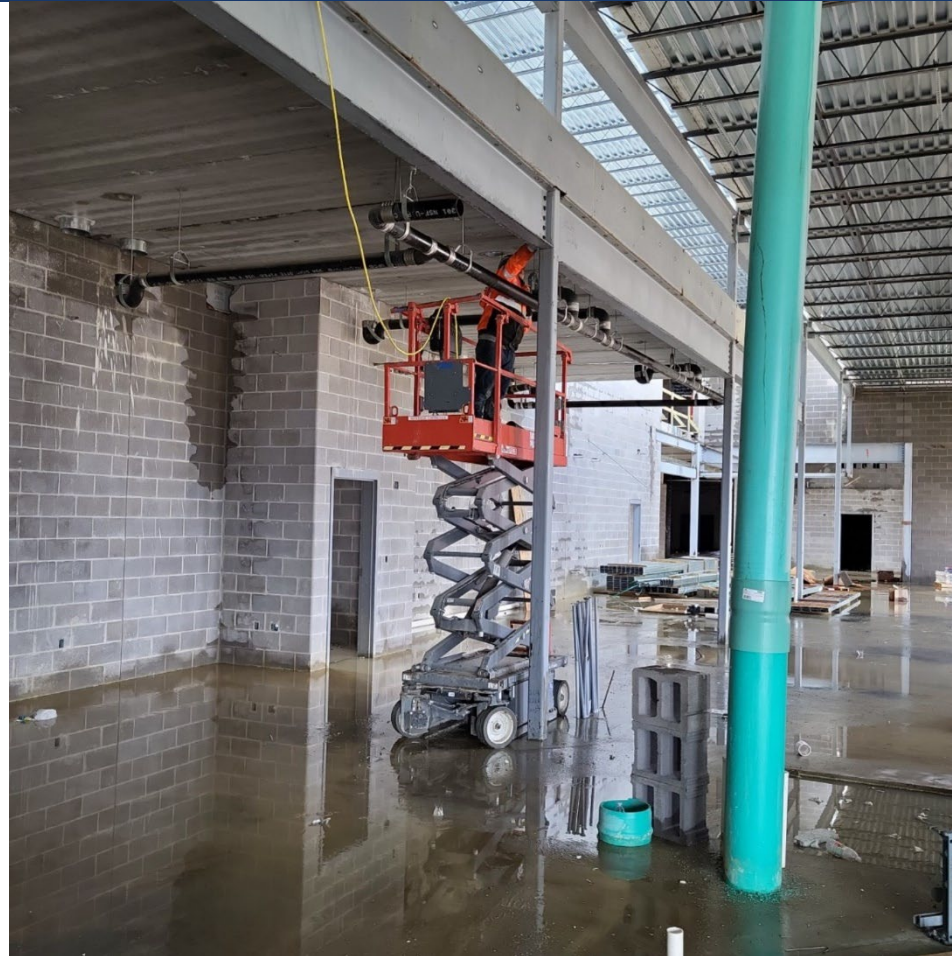
- Place Topping Slab at Area E Mechanical Mezzanine (All 2" Topping Slabs Complete)
- Place Topping Slab at Area B Mechanical Mezzanine
- Pour Cooler/Freezer Slab in Kitchen
- Continue Handrails at Area A Platform
- Continue Structural Steel at Storm Shelter
- Complete Load Bearing Masonry
- Continue Misc. Masonry Infills
- Dry In Complete At Cafeteria, Main Entrance Roof
- Continue Exterior Framing
- Continue Block Fill at Area C
- Start Hanging Sheetrock at Area A 1st and 2nd Floors
- Continue MEP and Sprinkler Rough IN and Equipment Connections
- Continue Pulling Main Building Power
- Finish Geothermal Piping to the Building



Mary E. Britton Middle School



Area B – Admin MEP Roughins Continue



Week Ending April 5, 2024

Mary E. Britton Middle School



Area B – Media Center Roof Deck Installed



Mary E. Britton Middle School



Area B- Mezzanine Ready for Concrete Pour



Week Ending April 5, 2024

Mary E. Britton Middle School



Area B – Vestibule Roof Deck Installed



Week Ending April 5, 2024

Mary E. Britton Middle School



Area D – Stair Opening



Week Ending April 5, 2024

Mary E. Britton Middle School



Area E – Stage Cafeteria



Week Ending April 5, 2024



Mary E. Britton Middle School

Area F – Furring for ACM Panels has Begun



Week Ending April 5, 2024

Mary E. Britton Middle School



Area F – Loading Dock Ready for Concrete Pour



Week Ending April 5, 2024