



Strategic Planning

Dr. Wendel McCollum
School Board Overview
February 28, 2023



Strategic Planning Methodology

PHASE

Plan & Align

January-February 2023

Foundations

February 2023

Design

March-April 2022

Launch

May-July 2023

Key Objectives

- We know how, when, and to what extent we will engage stakeholders in the planning process

- We collect data to highlight our strengths and opportunities
- We create a draft vision that guides our work

- We use a designer's mindset to think critically about when to flare and when to focus
- We prioritize areas that support our vision and design solutions for those areas
- We codify not only the plan but also how we will "pivot" when needed
- We inform groups not already involved

- Identify milestones for strategic planning initiatives
- Build habits of reflection to identify "pivots" as plan progresses

Key Outputs

- Project Calendar
- Steering Committee list
- Constituent engagement plan

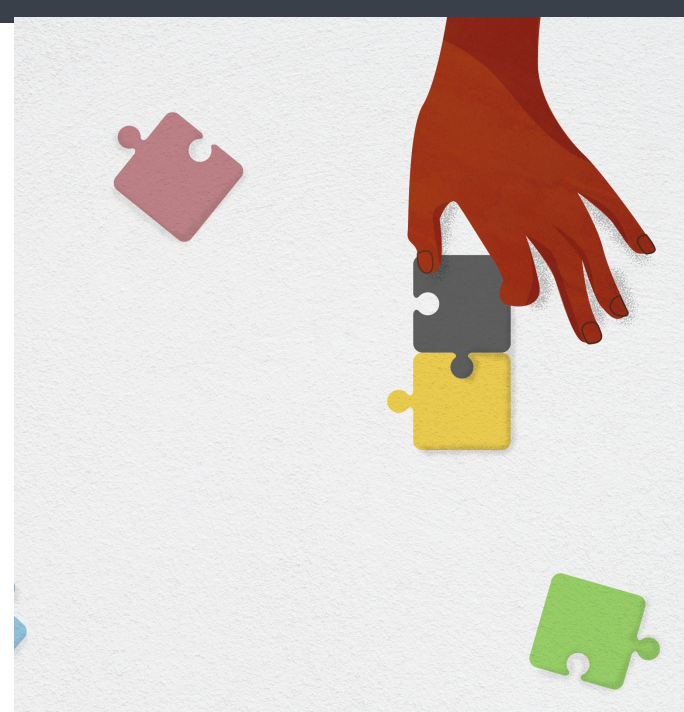
- Summarize findings + data review
- Draft vision statement + areas of focus

- Planning canvas with priority areas
- Strategic plan outline
- Implementation plan + timeline
- Final strategic plan + board presentation
- Plan for progress monitoring

- Progress monitoring
- Targeted initiative support
- Retrospective session to reflect on progress

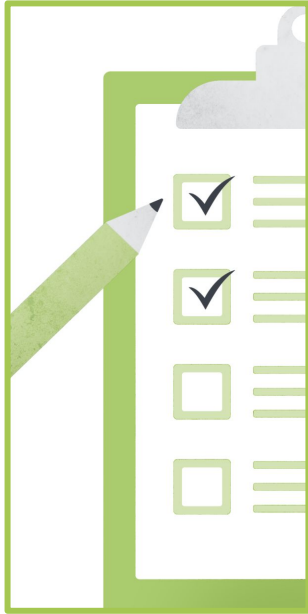
Foundations Phase

- Project Team - Biweekly logistics and planning meetings
- Steering Team
 - Convened February 16 virtually
 - Day long planning meeting March 14
- Community Engagement has begun!



HOW WE ARE GOING TO ENGAGE OUR COMMUNITY

SURVEY



Feb. 13-24

FOCUS GROUP



Feb. 21-28
(10 focus groups)

TOWN HALL



March 13

WHAT | Community Engagement Domains

Access + Communication	To what extent do individuals have access to the information they need and ability to provide feedback or influence the process?
Climate and Responsive Culture	To what extent are various constituents involved in the decision-making process and satisfied with the district and its policies? (safety, leadership, discipline, decision-making, policies and procedures)
Student Performance	To what extent are students able to perform at their highest level and express their learning in multiple ways?
Curriculum and Instruction	What offerings and pedagogical practices are accessible? (courses including AP, arts etc)
Belonging	To what extent do individuals feel comfortable being themselves in their community? What is it like to be a member of this community?
Wellness	To what extent does school support creativity, cognitive wellbeing, and social-emotional safety?

Survey Participation

- Current student: 1613 responses
- Former student or alum: 195
- Employee (instructional): 390
- Employee (non-instructional): 121
- Parent/guardian of current student: 468
- Parent/guardian of former student: 197
- School or district leadership: 48
- Adult education student: 3
- Community member: 245



Up Next...



TOWN HALL

Monday, March 13

Michigan City High School

5:00 - 7:00 PM

Join us to hear about the process to develop a new strategic plan for MCAS and engage in conversation to help inform the plan.



RSVP AT

[EDUCATEMC.NET/TOWNHALL](https://educatemic.net/townhall)