

# Madison Elementary School District

Maricopa County

Efficiency peer groups 8 and T-1, Achievement peer group 12<sup>1</sup>

Legislative district(s): 24 and 28

District size, location:

Medium-large, City

Students attending:

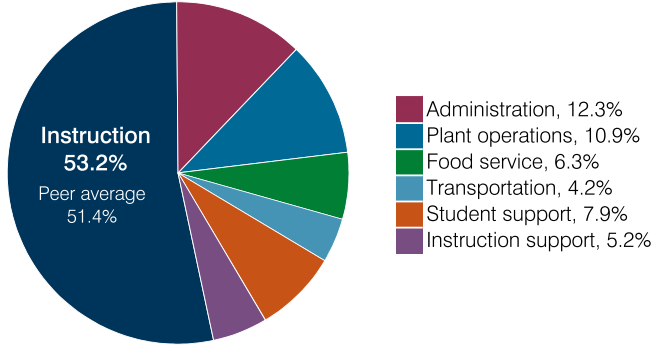
5,531

Number of schools:

8

## OPERATIONAL EFFICIENCY

### Spending by operational area



### Efficiency measures relative to peer averages

Operational area	Measure	District	Peer average	State average
Administration	Cost per pupil	\$917	\$1,025	\$860
	Students per administrative position	61	67	66
Plant operations	Cost per square foot	\$5.88	\$6.61	\$6.34
	Square footage per student	138	143	156
Food service	Cost per meal	\$2.86	\$2.92	\$3.02
Transportation	Cost per mile	\$9.63	\$7.19	\$4.05
	Cost per rider	\$1,247	\$1,106	\$1,301

Very low
Low
Comparable
High
Very high

### Per pupil spending

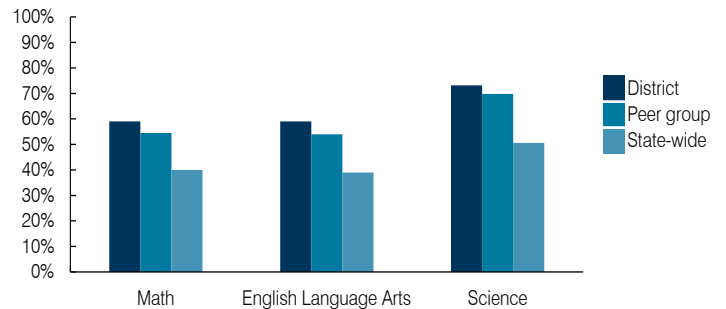
Spending by area	District		Peer average 2018	State average 2018
	2017	2018		
Instruction	\$ 3,648	\$ 3,962	\$ 4,392	\$ 4,480
Administration	985	917	1,025	860
Plant operations	841	810	971	988
Food service	434	468	659	425
Transportation	294	311	331	388
Student support	517	592	631	693
Instruction support	388	387	546	462
<b>Total operational</b>	<b>7,107</b>	<b>7,447</b>	<b>8,555</b>	<b>8,296</b>
Land and buildings	2,284	5,592	1,140	827
Equipment	321	381	697	409
Interest	440	720	327	228
Other	912	990	172	169
<b>Total nonoperational</b>	<b>3,957</b>	<b>7,683</b>	<b>2,336</b>	<b>1,633</b>
<b>Total per pupil spending</b>	<b>\$ 11,064</b>	<b>\$ 15,130</b>	<b>\$ 10,891</b>	<b>\$ 9,929</b>

## STUDENT ACHIEVEMENT, STUDENT AND TEACHER MEASURES, AND REVENUES

### ADE-assigned school letter grades

Grade	Number of schools	Percentage of schools
A	4	50%
B	3	38%
C	1	12%
D	0	0%
F	0	0%

### Students who passed State assessments



### Student and teacher measures

Measure	District	Peer average	State average
Attendance rate	96%	95%	94%
Graduation rate (2017)	N/A	N/A	N/A
Poverty rate (2017)	14%	11%	19%
Special education population	8%	10%	12%
Students per teacher	19.7	18.8	18.4
Average teacher salary	\$45,716	\$47,982	\$48,951
Amount from Prop 301	\$6,838	\$6,094	\$6,411
Average years of teacher experience	7.8	10.3	11.4
Percentage of teachers in first 3 years	21%	17%	19%

### Per pupil revenues

Revenues by source	District		Peer average 2018	State average 2018
	2017	2018		
Federal	\$ 689	\$ 780	\$ 1,723	\$ 1,317
State	2,311	2,580	3,921	4,011
Local	8,294	9,102	4,869	4,592
<b>Total per pupil revenues</b>	<b>\$ 11,294</b>	<b>\$ 12,462</b>	<b>\$ 10,513</b>	<b>\$ 9,920</b>

### Select revenues from common sources

Source	District	Peer average	State average
Equalization formula funding	\$ 4,835	\$ 4,994	\$ 5,175
Grants	624	921	1,843
Donations and tax credits	158	161	54

### Select revenues from less common sources

Source	District	Peer average	Number of peers receiving
Desegregation	\$ 0	\$ 0	4 of 19
Small school adjustment	0	0	0 of 19
Federal impact aid	0	0	0 of 19
Voter-approved levy increases	3,407	4,063	19 of 19

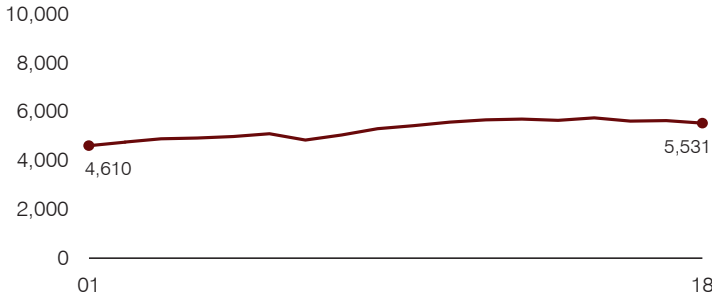
<sup>1</sup> See Appendix A for information such as districts included in each peer group and Appendix B for sources and methodology.

**Instructional spending percentage**

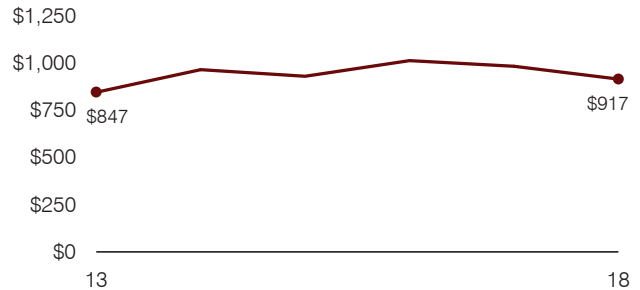
Year: 2001 2002 2003 2004 2005 2006 2007 2008 2009 2010 2011 2012 2013 2014 2015 2016 2017 2018  
 Percentage: 54.3 56.1 58.1 59.5 59.3 59.2 58.4 55.0 54.6 53.2 51.1 53.1 52.7 51.7 53.1 51.9 51.3 53.2

**TRENDS AND FINANCIAL STRESS ASSESSMENT**  
 Fiscal years as indicated

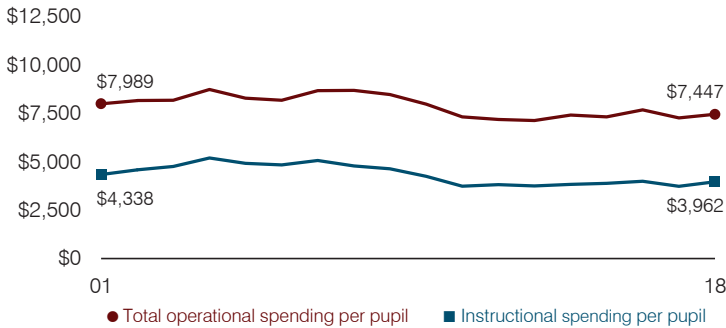
**Students attending**



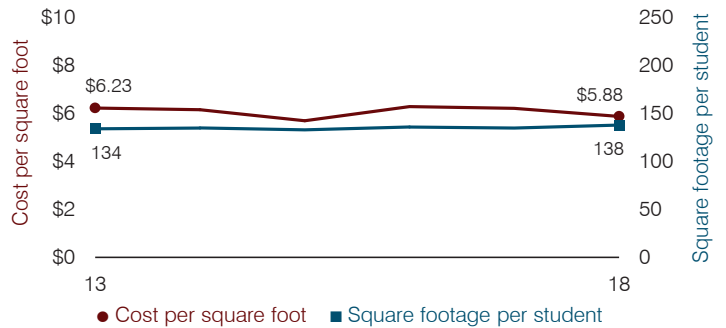
**Administrative cost per pupil**



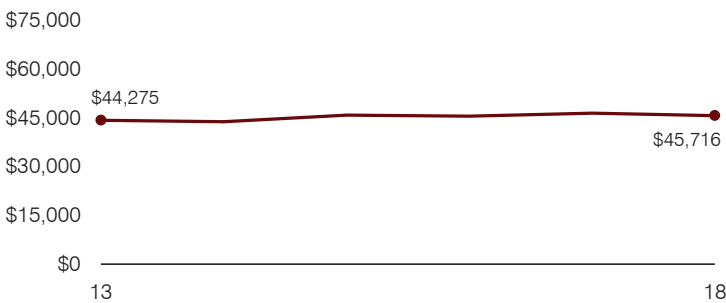
**Total operational and instructional spending per pupil (inflation adjusted to 2018 dollars)**



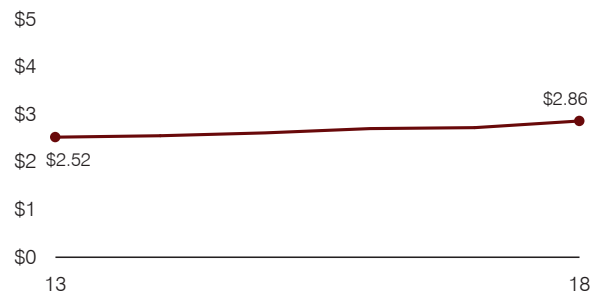
**Plant cost per square foot and square footage per student**



**Average teacher salary**



**Food service cost per meal**



**Financial stress assessment**

Overall financial stress level: **Low**

Measure: 2016 through 2018	Assessment
Change in number of district students	Steady
Spending exceeded operating/capital budgets	No overspending
Spending increase election results	Voter-approved
Operating reserve percentage, Trend	4.9%, Varying
Years of capital reserve held	More than 3 years
Current financial and internal control status	Compliant

**Low**      **Moderate**      **High**

**Transportation costs per mile and per rider**

