



2024 BELLEVUE SCHOOL DISTRICT COLLEGE CONFERENCE SERIES



Running Start Information Session

Presented by BSD School Counselors and Bellevue College Staff

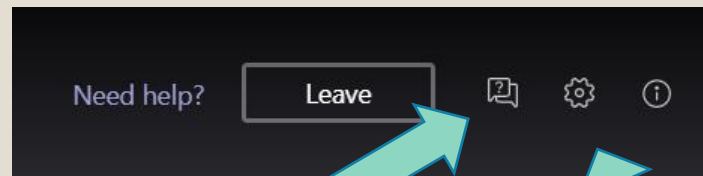


RUNNING START

MANDATORY INFORMATION SESSION

For School Year 2024-2025

Questions will be answered as time allows



Go to the 'Q & A' feature to ask a question

Ask a question

Go to the 'settings' icon to chose a language for closed captions

Español, 简体中文 Simplified Chinese, 傳統漢 Traditional Chinese, हिंदी Hindi, 한국어 Korean and Việt Vietnamese



Presenters:

**Mary Beth Smith + Sarah
Manesh Berger**

- BHS School Counselors

Linda Kepler
Bellevue College Representative



**Type questions in
Q & A**

Carri McDermott
Interlake

Nicole Anderson
Sammamish

Tania Maxfield
Newport

Outline for today

- Who?
- What?
- Where?
- When?
- Why?



Who can do Running Start? What is it?

A program for Juniors and Seniors to earn **College Credit** and **High School credit** at the same time.

Students take their classes at a local college.



Quarter system
(Bellevue College)

Semester system
(BSD High School)

Terms: Fall, Winter, Spring

Terms: Fall, Spring

Number of classes: ~ 3

Number of classes: 6-7

Number of credits:
12-21 college credits/quarter
(5 college credits= 1 HS credit)
45 college credits/full year
(=9 HS credits)

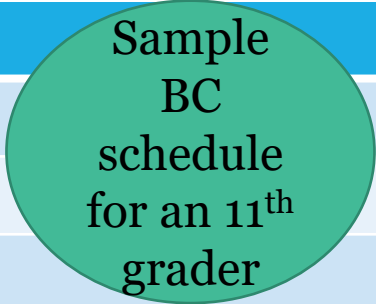
Number of credits:
3.0-3.5 HS credits/semester
6.0-7.0 HS credits/full year

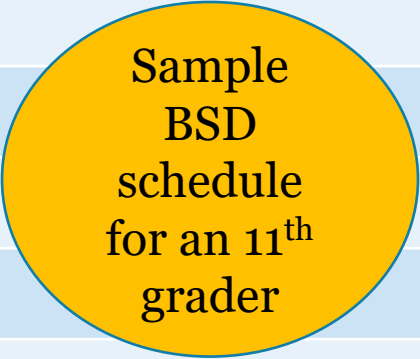
Length of Term: ~ 9 weeks

Length of Term: ~ 18 weeks

School Breaks (approx.):
Winter: 2- 3 weeks in Dec.
Mid-winter: NONE
Spring: 1 week in **March**

School Breaks (approx.):
Winter: 2 weeks in Dec.
Mid-winter: 1 week in Feb.
Spring: 1 week in **April**

	FALL QRT	WINTER QRT	SPRING QRT
	English 101	History 147	Physics 101
	World Lang	Math 141	Math 142
	Art	Elective	Elective
HS Credits Earned:	3	3	3

	1st SEMESTER	2 nd SEMESTER
	American Lit or AP/IB	American Lit or AP/IB
	US History or AP US /IB	US History or AP US /IB
	Pre-calculus or other	Pre-calculus or other
	Physics or other	Physics or other
	World Language	World Language
	Elective	Elective
	Art	Elective
HS Credits Earned:	3.5	3.5

Associate's Degree Opportunities

Degree Requirements	Credit	Qtr/Yr
Written Communication: 10 credits		
Group A:		
Group B:		
Quantitative/Symbolic Reasoning: 5 credits		
Humanities: 15 credits (<i>three different subjects</i>)		
Social Sciences: 15 credits (<i>three different subjects</i>)		
Natural Sciences: 15-16 credits (<i>three different subjects</i>)		
Lab:		
Electives: 30 credits or sufficient credits to meet total of 90 (<i>max. 15</i>)		

- Many Running Start students try to earn an AA Degree.
- You can visit the BC webpage for an AA Planning Sheet that will help guide you towards earning the AA Degree (sample on left).
- **BC also has Advisors available to help you track your credits for the AA.**

Why?

- Why should I do Running Start?
- How do I know if it is a good fit?

Is Running Start Right for You?

- Are you.....
 - Excited about **academic challenges**?
 - More **mature** than most high school students?
 - Comfortable with diverse situations?
 - **Assertive** and able to ask for help?
 - Doing well academically?
 - **Independent** and **motivated**?
 - **Consistent** with attendance and work completion?
 - Able to **commit** to the program for a full year?

Benefits of Running Start

- Free college tuition!
 - Reminder –Students pay for Textbooks, other class fees, & Parking
- Advanced course work and academic challenge
- Variety in course selection
 - Foreign languages, sciences, astronomy with a real planetarium, etc.
- Flexible schedule
- Develop independence
- Make connections with college faculty
- A new social environment
- Opportunity to earn a two-year college degree (A.A./A.S)



Challenges of Running Start

- Scheduling challenges
- Student is ultimately responsible for ensuring that high school graduation requirements are met!
- Transfer credit issues
 - Credits may not be accepted at all schools
- Books, fees and transportation costs \$\$\$
 - Can be a few hundred dollars per quarter

Challenges of Running Start

- Fast pace and time demands of college studies
- A new social environment and age diversity
- Impact to your college **and** high school transcript by doing poorly
 - Financial aid ramifications (if below 2.0 GPA)
- Some classes may be online
- Conflicting vacation dates
- May miss out on assemblies/activities

FERPA and Parent Involvement

- Under the Family Educational Rights and Privacy Act (FERPA), college professors **cannot communicate with anyone but the student** about the student's course work or grades. **All students taking college courses are considered adults.**
- The student is responsible for all communication regarding course work, grades, and appeals or complaints.

What about Part-time?



VERY DIFFICULT TO MANAGE



Parking and transportation issues

Must be on time



Your high school schedule will not change to accommodate your college schedule.



Different calendars

Holidays, assemblies, testing, etc.



Running Start enrollment balance is a year-long commitment



We encourage **full-time** Running Start.

Running Start vs IB vs AP vs “College in the High School”

- Universities see these rigorous courses as **equivalent** (all are college level)
- College credit can be earned by:
 - Completing the class:
 - Running Start
 - College in the High School
 - Earning a score on an end of year exam:
 - IB & AP Classes
- Ultimately, the college you attend after you graduate high school will determine how to grant you credit.



How?

How do I qualify?

How do I pick my college classes?

How do I register for classes?

How is my HS counselor involved?

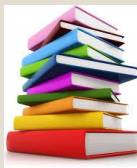
Cost

Paid by BSD:

Tuition: Up to 21 college credits for full-time Running Start students each quarter approved by RSEVF (state form)

Paid by student:

- Textbooks + other class materials required
 - Class fees
 - Parking
- Any credits over the approved 21/quarter
- Any credits below the 100 level placement (ex: Math 099, ENGL092)



Placement Requirements

You will need to be able to “place” into certain classes.

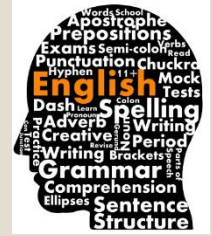
- Submit your transcript for placement or complete an English/math placement exam or an alternative placement option

<http://www.bellevuecollege.edu/testing/placement/>

Must use the Placement button on Placement website to submit requests

- Must meet **all** program deadlines!

English Placement

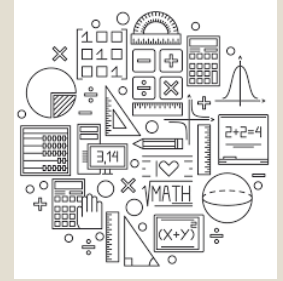


- Students may place into English 101 or higher with:
 - High School transcript, overall GPA of 3.0 or higher
 - See college website for alternative options if needed (including a placement test)

Ask for English and Math Placement and Submit your Documentation

<https://www.bellevuecollege.edu/testing/placement/>

Math Placement



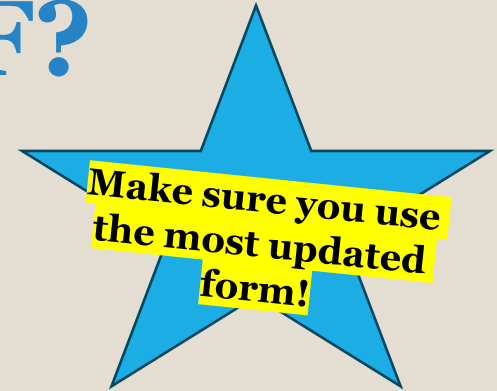
- Students may use one of the following:
 - Appropriate grade in a high school math course
 - Visit the link for more info:
<https://www.bellevuecollege.edu/wp-content/uploads/sites/143/2018/07/BSD-grid-for-website-math-only-ALEKS-update-1.pdf>
 - Placement using ALEKS, a web-based program

Ask for English and Math Placement and Submit your Documentation

<https://www.bellevuecollege.edu/testing/placement/>

What is an RSEVF?

- Running Start Enrollment Verification Form
- It's like a permission slip and a check!
- Completed with your school counselor each quarter
- Shows the college how many credits you can take
- Can help you request financial assistance for class and student fees



Free and Reduced-Price Lunch (FRPL) Status (required to be completed)

Students who are currently FRPL eligible (or anytime in the past five school years) may receive tuition and fee waivers from a college.

Is the student currently eligible for FRPL? Yes No HS Counselor Initials: _____

The parent or guardian signature below provides permission to share FRPL eligibility status only with the Running Start college for the purpose of ensuring access to tuition and/or fee waivers. Choosing not to sign the consent will not affect the student's eligibility for access to Running Start or free and reduced-price meals or free milk. The individuals and programs receiving the information will not share the information with any other entity or program.

Parent/Guardian Signature: _____ Date: _____

- Helps you know what classes at the college count for HS graduation requirements!

Recommended Running Start Classes:

College Course (Dept. & Number)	# of College Credits		High School Equivalency	# of HS Credits
_____	_____	=	_____	_____
_____	_____	=	_____	_____
_____	_____	=	_____	_____
_____	_____	=	_____	_____

Signature of High School Counselor	Date	Signature of College Running Start Advisor/Rep	Date
High School Counselor Printed Name	Phone Number	College Running Start Advisor/Rep Printed Name	Phone Number

Students submit completed RSEVF to Bellevue College here:

Running Start Program Menu

[Academic Calendar](#)

[Running Start Home](#)

[RS Information Session Schedule](#)

[RS Admissions](#)

[RS Current Students](#)

[RS Summer](#)

[RS Advising & Educational Planning](#)

[RS General Rules and Information](#)

[RS Parents / Guardians](#)

[RS Forms and Quick Links](#)

[RS Resources](#)

Student Forms

- [Summer Quarter RS Enrollment Request Form \(2022\)](#)
- [RS New Student Intent Form](#)
- [RS Enrollment Verification Form](#)
- [College General Admission Application](#)
- [RS Fee Waiver Form](#)
- [RS Fee Waiver Instructions with Q & A](#)
- [Student Information Release Authorization Form](#)
 - [Withdraw Permission to Access Student Information Form](#)

Submit your form [here](#)

Questions? runningstartnewstudent@bellevuecollege.edu

Bellevue College Academic Policy

- **Running Start students follow the same academic policy as all Bellevue College students.**

Academic Standing Policy

- Bellevue College is committed to the academic success of its students. The college identifies and alerts students who are not making satisfactory academic progress and provides those students with assistance to improve their academic performance. The Academic Standing Policy applies to all students, with limited exceptions ([policy #3200](#)).

Academic Standing Procedures

- Students must earn a cumulative and quarterly Grade Point Average (GPA) of 2.0 or higher to remain in good academic standing and off of academic probation. The college applies progressive consequences for students who do not achieve a good academic standing at the end of each quarter.
- Exceptions may include students admitted through programs that establish academic standards that include criteria in addition to a student's GPA, such as students receiving financial aid, international students, and Running Start students. Students impacted by these exceptions should contact the appropriate program advisor for information ([3200p Academic Standing Procedures](#)).

runningstartnewstudent@bellevuecollege.edu
<https://www.bellevuecollege.edu/runningstart>

Bellevue College: Running Start Academic Policy

The college requires students to earn at least a 2.00 grade point average (GPA) each quarter.

- RS students follow the college [Academic Standing](#) policy and process.
- The college uses four levels of progressive intervention for students who do not earn at least a 2.0 at the end of each quarter.
 - Level 1: [Academic Concern](#)
 - Level 2: [Academic Intervention](#)
 - Level 3: [Academic Restriction](#)
 - Level 4: [Academic Dismissal](#)
- Students can appeal college actions taken for Level 3 and Level 4.

<https://www.bellevuecollege.edu/academicstanding/>

*Students may be charged fees for dropping classes



Join Running Start at Bellevue College!

- **For students that plan to attend the Running Start Program Starting Summer or Fall Quarter 2024**
- Priority Registration Begins for Summer and Fall 2024 Quarter classes May 8, 2024. For students that have completed all of the RS Admissions Steps.
- For Information about Summer and Fall 2024 Quarters Running Start please see our webpage at:
- [Summer 2023 Running Start \(RS\) Program :: Running Start \(bellevuecollege.edu\)](https://www.bellevuecollege.edu/runningstart) OR
- [New Student Running Start \(RS\) Admissions Process :: Running Start \(bellevuecollege.edu\)](https://www.bellevuecollege.edu/runningstart)
- Summer Quarter Deadline: **June 10, 2024, College Application, RS Intent to Participate and ALL RS ADMISSIONS STEPS REQUIRED.**
- Fall Quarter Deadline: **September 6, 2024, College Application, RS Intent to Participate and ALL RS ADMISSIONS STEPS REQUIRED.**

runningstartnewstudent@bellevuecollege.edu
<https://www.bellevuecollege.edu/runningstart>

BSD Running Start Policies

- Must indicate an interest **this spring**
(follow steps in your packet)
- After BSD starts, NO BSD classes will be dropped to accommodate Running Start.
- After BC starts, NO BSD classes will be ADDED for credit.
- Students must turn in signed BSD Running Start contract (see packet).

Interested? Next Steps:

- 1) Review your packet with your family and think about your options.
- 2) Attend RS Information Session with the college
- 3) Apply for Running Start Online Website
 - Complete BOTH (starting March 1)
 - RUNNING START INTENT
 - BELLEVUE COLLEGE APPLICATION

Apply for Running Start Admission at BC Website

<https://apply.ctc.edu/register>



Take your life to the next level!



Start A New Application

Immediately below this page, you will find detailed explanations for each section.

Logout

College *

 Bellevue College

I will be enrolling as a... *

First Year

Program *

Non-Award Seeking

Term *


FALL 2024

Degree or Certificate I am seeking... *

Non-degree - Other

Academic Focus Area

Apply

 Explore our Programs

 In-progress applications

 Instructions Guide

 Submitted Applications



After completing all steps with Bellevue College (**BHS**)

Make an appointment for you and your parent/guardian(s) to meet with your BHS school counselor

- Contact Diane Campbell, BHS school counseling secretary, to schedule an appointment (campbelld@bsd405.org)
- Your BHS counselor will help you to plan out your college courses and sign your registration paperwork.
- After your meeting, turn in your completed enrollment verification form to the college Running Start office. They will tell you next steps to register for courses.



After completing all steps with the College (NHS)

- Attend a College Information Session (required)
 - Review the BSD/NHS Running Start presentation pdf & packet
- Make an appointment with your NHS school counselor (at least 3 days prior to the enrollment period)
 - Bring the signed [BSD Running Start Information/Contract](#) to this meeting
 - Your counselor will work with you to figure out your college courses and will give you the required Running Start Enrollment Verification Form (RSEVF)
 - *Prior to each quarter, you must set up a meeting with your counselor to fill out a new RSEVF*
- After your meeting, **upload the completed RSEVF** to the college (link is on their website). They will tell you next steps to register for courses
 - *Check your College email regularly*
- Register for your courses at the College
 - *Do Not Procrastinate! – classes fill up quickly*
- Pay for your course fees and buy your books



After completing all steps with **Bellevue College (SHS)**

- Attend a College Information Session (required)
- Make an appointment to meet with your SHS school counselor. Parents aren't required to attend the meeting but are encouraged to come
 - Contact your counselor directly through bookings, email, or Teams to schedule an appointment
 - Your SHS counselor will help you to plan out your college courses and sign your registration paperwork.
 - Bring your signed contract to the meeting
 - After your meeting, turn in your completed enrollment verification form to the college Running Start office. They will tell you next steps to register for courses.



After completing all steps with the College (IHS)

- Make an appointment to meet with your High School Counselor to complete the Running Start Enrollment Verification Form
 - Submit signed BSD contract
 - Determine FTE
 - Review remaining graduation requirements
 - Identify equivalent courses at Bellevue College to meet graduation requirements

After completing all steps with Bellevue College (BDD)

- Attend a College Information Session (required)
- Make an appointment to meet with your BDD school counselor Ms. Christianto or Ms. Williams. Parents aren't required to attend the meeting but are encouraged to come.
 - Contact your counselor directly through Bookings, email, or Teams to schedule an appointment
 - Your counselor will help you to plan out your college courses and sign your registration paperwork.
 - Bring your signed contract to the meeting.
 - After your meeting, turn in your completed enrollment verification form to the college Running Start office. They will tell you next steps to register for courses.



Big Picture School

- Running Start and the BP Internship program are specialty programs that can be challenging to coordinate but can work well with some thoughtful planning and for students who are ready for the responsibility!
- Unlike the comprehensive high schools, Big Picture students can only do Running Start part-time because our Internship program is a required class.
 - This also means students cannot register for RS classes that conflict with Thursdays during your 7-hour internship or 3rd period Advisory on Mon, Tues, Wed, or Fri.
- **NEXT STEPS:**
- If you want to learn more about how the Big Picture program and Running Start program can work together, please join us at the VIRTUAL Running Start Info Night on **February 28th at 6:30 pm!** More info to come from the HS counselor, Amy Stephens.

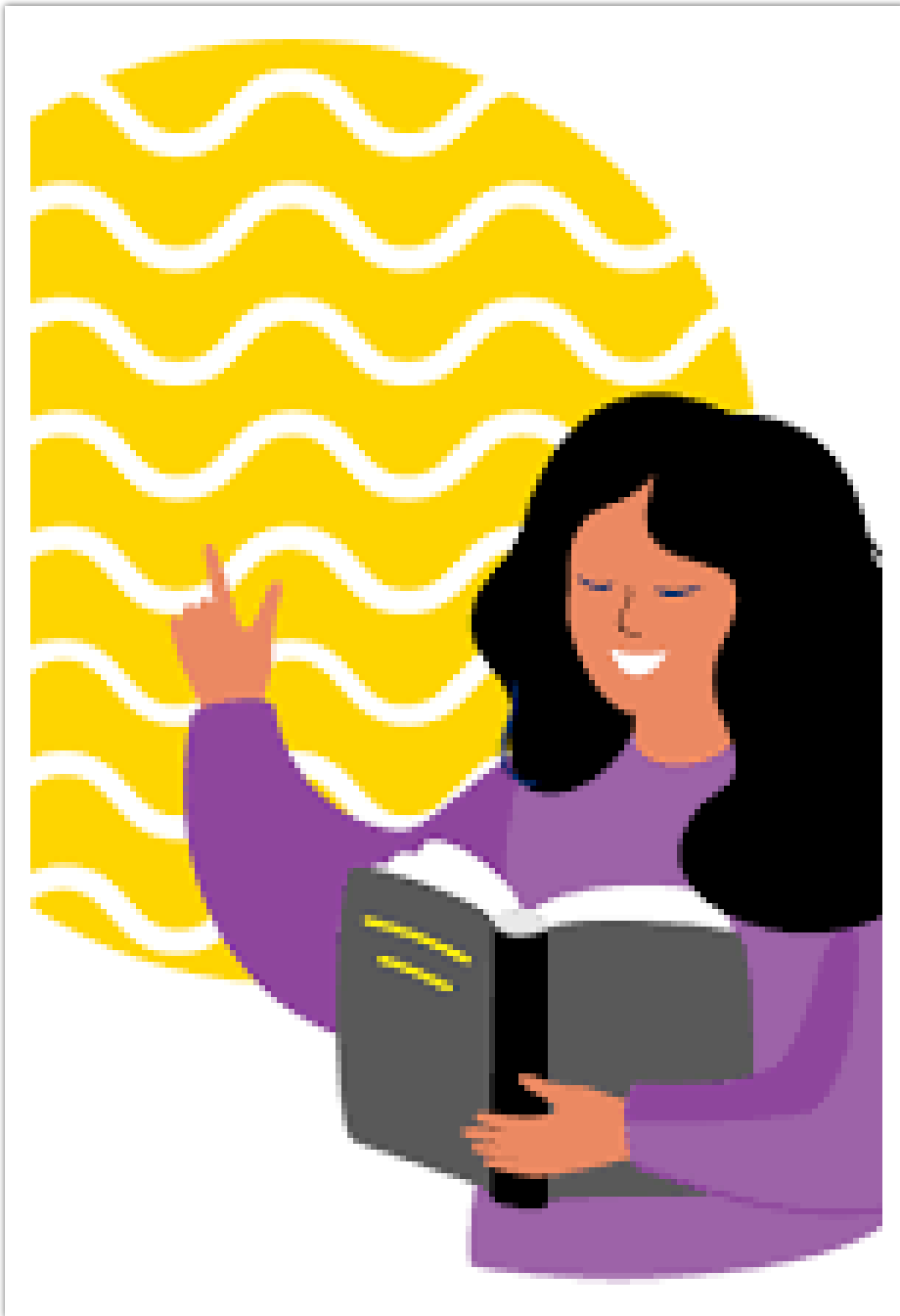
Planning Reminders

- It is important to plan out the courses you will take each quarter for the entire year.
(see planning sheet in packet)
- One 5-credit college course is equal to one year (1.0 credit) of the high school level course.
 - Students must be fully enrolled at all times. This means 12+ college credits each quarter if full-time Running Start.

Fall 2024 Info Sessions for Bellevue College – in person



- Saturday Mar 23, 2024
 - 9:00 am - 10:30 am
 - 11:00 am- 12:30 pm
 - 1:00 pm – 2:30 pm
- Saturday Apr 13, 2024
 - 9:00 am - 10:30 am
 - 11:00 am- 12:30 pm
 - 1:00 pm – 2:30 pm
- Saturday Apr 27, 2024
 - 9:00 am - 10:30 am
 - 11:00 am- 12:30 pm
 - 1:00 pm – 2:30 pm
- Saturday May 11, 2024
 - 9:00 am - 10:30 am
 - 11:00 am- 12:30 pm
 - 1:00 pm – 2:30 pm



BC Resources

- Tutoring:
<https://www.bellevuecollege.edu/asc/>
- Mental Health Counseling
 - <https://www.bellevuecollege.edu/counseling/>
- Advisors
 - <https://www.bellevuecollege.edu/advising/>
- Disability Resources Center
 - <https://www.bellevuecollege.edu/drc/>

Other Running Start Partner Programs Nearby



- Lake Washington Institute of Technology
- Seattle Central College
- Cascadia College

Advice from BSD Running Start students

Do your work on time. Work piles up over time and your teachers will not remind you. Don't be afraid to reach out to your professors if you need help, extra time, or want to learn more. Majority teachers are very good at accommodating, and most are lenient if you ever need an extension for an appropriate reason (not procrastination).

*Stay involved in high school!
Don't take 7:30 AMs (or even 8:30 for me) if you can help it.*

You need to try very hard to make sure to speak up with you need help and work with your professors because they are there to help you and are willing to help at all times; There's no need to feel embarrassed for needing help because everyone does.

Learn how to time manage for sure. Also talk to you professors if you need help. Don't be scared of them. Be responsible for you grade and learning. Absolutely No one is going to come to you and talk to you about how you can bring your grade up.

Make sure you keep track of all your assignments

More advice...

Go to your classes even if its optional.

Plan ahead and register for your classes as soon as possible. Also, make sure you are prepared for your tests, quizzes, etc. Utilize resources like office hours, study groups, and the academic success center if you need it.

Make sure to stay on top of your assignments, and always communicate with your professors! They might seem scary at first since it is college courses, but they want the best for your education and all you have to do is let them know what's going on.

make sure to do things on time

Just stay on track of your work and schedule classes for a good time

Enroll if you can discipline yourself to stay on track. This is great for students who want to stay in state or already know what area they want to get into. Even if you don't know what you want to major in though, it is still a great opportunity to get ahead and get some general classes out of the way if you plan on going to university.

Other thoughts/feedback

It is such a good program! I would really take advantage of the fact that you're in college while in high school. You get so many credits that you can transfer. The professors are much nicer and more lenient if you show interest and are willing to learn.

It is MUCH MORE different than regular highschool classes.

It's the best decision I've ever made.

I actually enjoy some of the classes I'm taking and I feel like I'm way more independent.



4.72 Average Rating

I loved every second of it! It worked with my busy schedule perfectly and I never had a bad teacher.

The classroom environment is much more mature. Teachers offer more freedom.

I've really enjoyed the diversity of classes & instructors available at BC.

i have so much more free time and i feel like i'm actually doing better in school now than i was when i was taking high school classes

I enjoyed the freedom of classes on your own time

I really struggled my Freshman and Sophomore year with my grades and I never fully knew why. I decided to do Running Start because it would help me kick start my career I want to do, and I was really nervous for if I would do good in these classes. Having less classes, even if the work load is more, makes for a very low-stress school year while also getting great education and a head start.

I loved having more independence in my classes and schedule, which means a lot less busy work and more free time (and sleep). It is also great that I can get college credit for my classes, which will reduce the price I pay for college later on.

It's been an awesome experience so if you are a pretty independent person, Running Start is a better choice for you than staying in High School

Especially during COVID, running start has allowed me to focus on fewer classes at a higher intensity so that my overall workload doesn't feel as overwhelming.

I'm really glad I decided to do Running Start. It's so nice I was able to kind of pick my own schedule and do work on my own time.

Closing Thoughts/Questions

- Refer to the digital packet:
 - Checklists, instructions, planning sheet
 - Course equivalencies, RSEVF, contract, graduation progress tracking sheet

- Visit Bellevue College's website:

<http://www.bellevuecollege.edu/runningstart/>

runningstartnewstudent@bellevuecollege.edu



BSD College Conference— Wednesday, February 7, 2024

Participate *In Person* or *Online*

In person

Meet college and university admissions representatives and other speakers such as BSD alumni, staff, and industry experts. Nearly all speakers will be in person at Highland

Highland Middle School
15027 Ne Bel/Red Road

6:00- Keynote by Dr. Kelly Aramaki

6:40-7:10- Session A

7:20-7:50- Session B

8:00 – 8:30 – Session C

Online

Sessions will be live streamed on Teams from Highland. Join live to participate in the Q & A.

Go to www.bsd405.org/CC2024

Links to join live sessions will be posted here

After each session, return to the College Conference page to join the next



Please watch the College Conference page on the BSD website for the conference schedule, session descriptions, links to join sessions and session recordings.

www.bsd405.org/cc2024