



2024 BELLEVUE SCHOOL DISTRICT COLLEGE CONFERENCE SERIES



BSD College Application 101 for Families

Presented by BSD School Counselors



Today!



January
 *Junior Counselor Lesson
 College 101 (1/24)
 *Running Start Info Session (1/31)



February
 *College Conference (2/7) Highland Middle School
 Virtual sessions available too

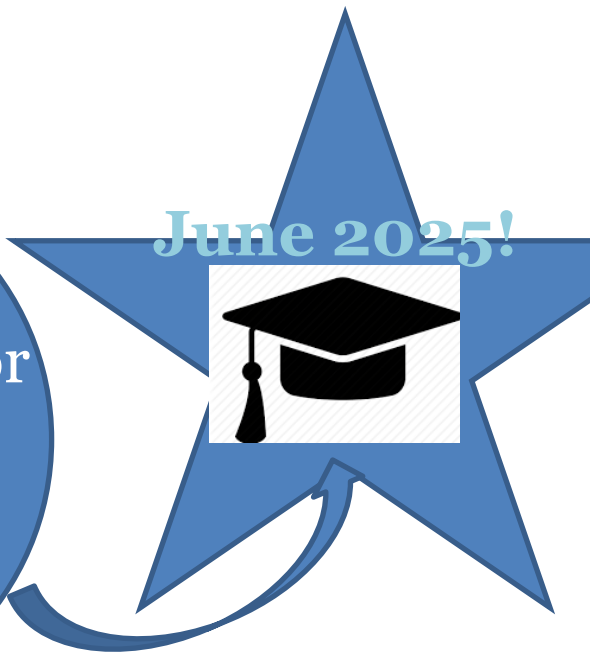


March
 *Junior Blitz/Class Registration

May
 *Junior Counselor Lesson in SS classrooms



September
 *Senior Counselor lesson
 *Senior Blitz!
 *Drop-in support





Application Process Overview

Prepare

Research and Build your list

Apply – the components of the application



Prepare (9th, 10th, 11th)

Course Selection – appropriate college prep rigor

GPA – prioritize and balance your time

Activities - in areas of passion and interest & build resume

Essay - draft in Junior English

PSAT in 11th grade Super Wed(October) & **SAT School Day** (March)

Visit with College Reps **Visit** local colleges

Attend **college fairs**
Seattle National College Fair (Nov)

Talk as a family about priorities, goals and finances



Prepare – Questions to ask for Course Selection

How many AP/IB
Classes should I
take?

How important are
grades compared
to taking a rigorous
class load?

What are college
admission officers
looking for?

What about Dual
Credit Courses?



High School Courses taken during Middle School:

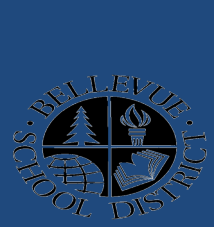
WA State has automatically posted any high school level courses taken in middle school to your high school transcript. If you would like them removed, you must do so by the end of 11th grade. ***Once the course grade/credit are removed, they cannot be re-added. Recommend to make this decision in the Spring of 11th grade.***

§ Two options:

§ Remove course from transcript (remove credit & grade)

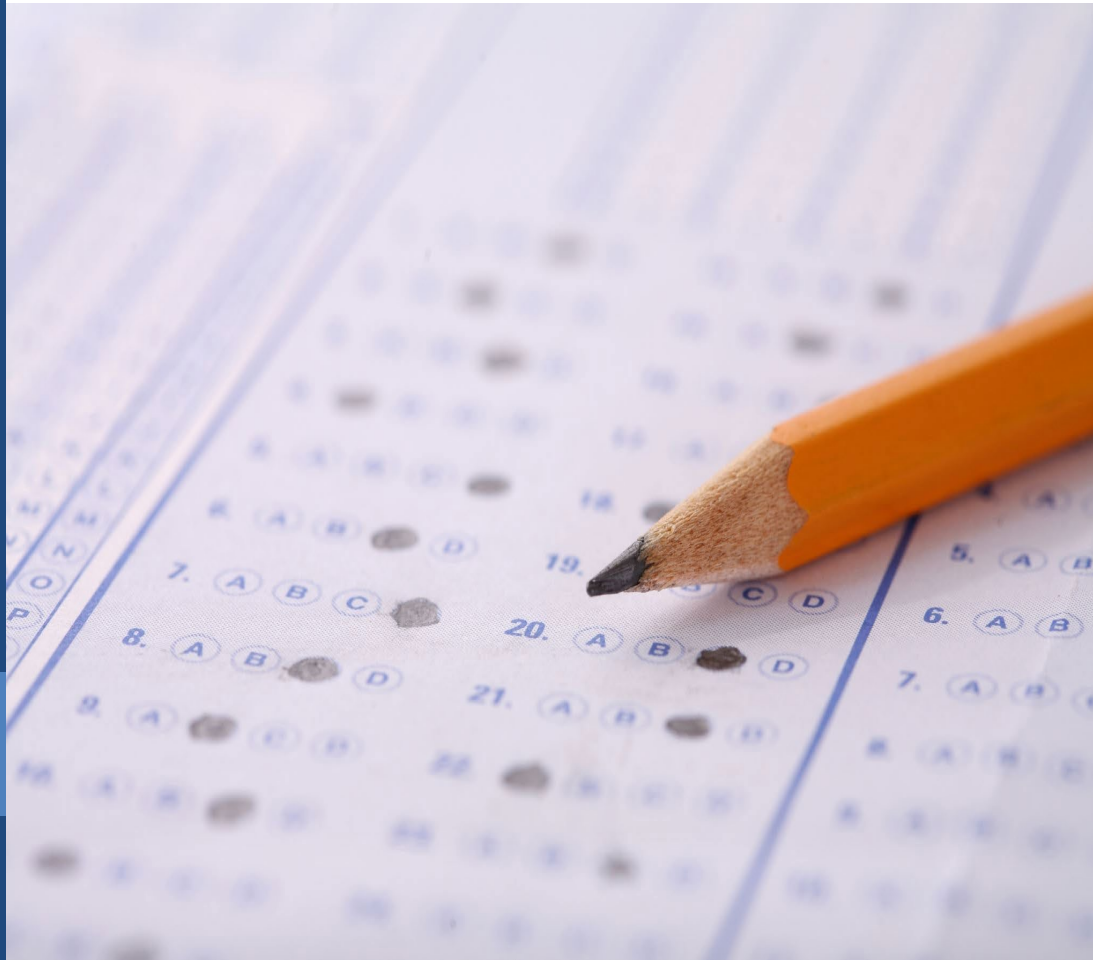
§ Remove grade only (course remains on transcript with "CR")

§ [Request for Removal of Credit/Grade Form](#) must be completed and signed by parents and submitted to Registrar at the high school. [Policy 24101P](#).



Prepare – TAKE THE PSAT & THE SAT OR ACT

The SAT is an entrance exam used by some colleges and universities to make admissions decisions. The SAT is a multiple-choice, digital test created and administered by the College Board. The PSAT is mostly a practice version of the SAT®, but it can also lead to more money for college. The highest performers on this exam are eligible to earn scholarships, and even just becoming a Commended Scholar can be a helpful addition to a college application. The ACT test is another option for students. This test included a STEM component and has digital and paper and pencil test options.



Class of 2025 (current 11th graders) – PSAT offered on Super Wednesday in October 2023.

Practice SAT- no need to sign up or pay

- Students are given their test booklets along with their score reports in order to review results
- They can log in to the college board website and review practice questions aimed at their weak areas of the test
- Free test prep available: College Board and Kahn Academy

Class of 2025 – Current 11th graders will take the SAT School Day in March 2024, during the school day.

- No need to sign up
- No charge for test during school day
- Student can opt out
- Free test prep available: College Board and Kahn Academy
- Students can self report scores to colleges if desired.
- Most colleges in the US are still test optional (all schools in WA state are test optional)



Prepare - College Admission Testing

To test or not to test: Over 1800 colleges and universities are now test optional or test blind, according to the National Center for Fair & Open Testing

If testing, we recommend students take both the SAT and the ACT in the spring of 11th grade. Students can retest in the fall of 12th grade if needed

In WA State, there are no colleges or universities that require the SAT or ACT

SAT changes: No more essays and no subject tests. Coming spring 2024 - All digital, shorter test, the allowance of graphing calculators and faster results

Students sign up for the tests and pay for tests on the college board website or the ACT website. Scholarships are available for students who qualify for F/R lunch. Students can check with school counselor



Prepare – Use the College & Career Center

Our **College & Career Specialists** work closely with the School Counselors at the four comprehensive high schools:

College Exploration

- Meet with students to discuss post high school options
- Answer questions about college application process
- Assist with Naviance
- Help with the WANIC career classes
- Arrange for the college representative visits to the high school
- Help students with looking for scholarships and financial aid

Career Exploration

- Career counseling to assist students in identifying future careers and potential areas of study in college
- Assist students to find and apply to vocational programs
- Arrange military representative visits
- Resume, Cover Letter and Interview guidance
- Job search and job boards
- Local volunteer opportunities



BSD COLLEGE CONFERENCE SERIES

JANUARY 24 - FEBRUARY 29, 2024

www.bsd405.org/cc2024

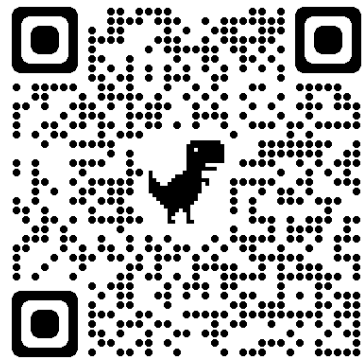


Career and Technical Education (CTE) Connecting Students to Post-Secondary Options

Presenter: Jess Moyer, BSD Director of Career and Technical Education Programs

College Credit Opportunities in High School

Presenter: Scott Powers, BSD Director of Teaching and Learning



Please watch the College Conference page on the BSD website for the conference schedule, session descriptions, links to join sessions and session recordings.

www.bsd405.org/cc2024

BSD COLLEGE CONFERENCE SERIES

JANUARY 24 - FEBRUARY 29, 2024

www.bsd405.org/cc2024



Sports Recruiting

Presenter: Larry Judd, Advisor, Varsity Student Institute



Please watch the College Conference page on the BSD website for the conference schedule, session descriptions, links to join sessions and session recordings.

www.bsd405.org/cc2024



Research - What college is right for me?



A “good school” is the one that is best for the individual student to thrive!

- Visit in person and online!
- Research! Learning about schools & the interests and values you share!
- Overlooking small things that might bug you (i.e., the weather...the fact that the laundry facilities are in the basement & small town vs. city)
- Does the college offer the major you are interested in, study abroad, and other activities that matter to you?
- Substance (the right fit) vs. reputation & status (what is popular or following the crowd)
- Just because a school is a good fit for one student- does not mean it will be a good fit for another.



Research – Finding your Best Fit

Your best fit should have ...

Learning environment that supports how you learn

Level of rigor that meets your level

Consider campus and living arrangements

Program/major to meet your academic needs and goals

Research retention and graduation rates

Apply to 4-6 schools. Don't make it a contest! Research cost.

BSD COLLEGE CONFERENCE SERIES

JANUARY 24 - FEBRUARY 29, 2024

www.bsd405.org/cc2024



Finding the Right Fit

Presenter: Claire Nold Glasser, College Planning Help

College Planning Help

www.collegeplanninghelp.com



Please watch the College Conference page on the BSD website for the conference schedule, session descriptions, links to join sessions and session recordings.

www.bsd405.org/cc2024



BSD COLLEGE CONFERENCE SERIES

JANUARY 24 - FEBRUARY 29, 2024

www.bsd405.org/cc2024



P
A
N
E
L

S
E
S
S
I
O
N
S

Washington Technical Schools

University of California Schools

University of Washington (Seattle and Bothell)

Admission to University in British Columbia

Fine and Performing Arts Colleges

Private Colleges

WA GAP- Washington Guaranteed Admissions Program Schools

(WSU, WWU, CWU, EWU, UWT, Evergreen)

WASHINGTON

**Guaranteed
Admissions
Program**



Please watch the College Conference page on the BSD website for the conference schedule, session descriptions, links to join sessions and session recordings.

www.bsd405.org/cc2024

BSD COLLEGE CONFERENCE SERIES

JANUARY 24 - FEBRUARY 29, 2024

www.bsd405.org/cc2024



Western Undergraduate Exchange (WUE)

Presenter: Palmer Muntz, University of Alaska Fairbanks

The Western Undergraduate Exchange (WUE) is America's largest regional interstate tuition savings program through which 160+ participating public colleges and universities provide steep nonresident tuition savings for Western students. Through WUE, eligible students can choose from hundreds of undergraduate programs outside their home state and pay no more than 150 percent of that institution's resident tuition rate. Since full nonresident college-tuition rates may exceed 300 percent of resident rates, WUE increases affordable higher-education choices for students, and minimizes the adverse impacts of student loan debt.



Please watch the College Conference page on the BSD website for the conference schedule, session descriptions, links to join sessions and session recordings.
www.bsd405.org/cc2024

BSD COLLEGE CONFERENCE SERIES

JANUARY 24 - FEBRUARY 29, 2024

www.bsd405.org/cc2024



Eastside Youth Coalition - University Of Washington Admissions Black Student Recruitment – *Session A*

Presenters: Nelson Wynn, Admissions/Multicultural Outreach & Recruitment, Office of Minority Affairs, University of Washington; Zach McKinlay, College Success Foundation Manager; April Paris-Joseph, Paris Educational Solutions; Humaira Ahmad Jackson, Bellevue College, Economics Professor, BSD College Corps

Eastside Youth Coalition - BSD Black Alumni Panel

Sessions B & C

A panel of Black Bellevue School District Alumni will share what they experienced attending Historically Black Colleges and Universities (HBCUs) and Predominantly White Institutions (PWIs).

BSD COLLEGE CONFERENCE SERIES

JANUARY 24 - FEBRUARY 29, 2024

www.bsd405.org/cc2024



College Opportunities for Students with Learning Differences

Learn from a panel of college representatives about opportunities here in Washington!

- **Bellevue College** *Neurodiversity Navigators Program*
- **Bellevue College** *Occupational Life Skills Program*
- **Washington State University** *ROAR Program*
- **Washington State University** *Access Center*
- **Highline College** *Achieve Program*



Please watch the College Conference page on the BSD website for the conference schedule, session descriptions, links to join sessions and session recordings.

www.bsd405.org/cc2024



Build Your College List

- **Types of Colleges** – Compare your GPA/Test Scores with their Average Range and Acceptance Rate
 - **Reach** (below their average and low acceptance rate)
 - **Reasonable or Target** (withing their average range and acceptance rate 25-75%)
 - **Likely** (above their average range and high acceptance rate)
 - **Lottery** (no guarantee for anyone)
- **Research using Search Engines**
 - Super Match/College Match
 - College Board Search Engine
 - And many others like Cappex, Peterson's etc.
- **List in Naviance** – “Colleges I’m Interested in” and “Colleges I’m Applying To”
- **College Reps Visit High Schools** – receive a notification when the rep is visiting
- **Manage Your List** - List positives and negatives, update info, prioritize
- **Net Price Calculator**- Available on a colleges/university’s website and allow prospective students to enter information about themselves to find out what students like them paid to attend the institution in the previous year, after taking grants and scholarship aid into account.



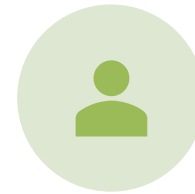
Research - Campus Visits



Work College Visits into family vacations



Take an official campus **tour**



Speak with an **admission counselor**



Ask about **financial aid** opportunities



Sit in on a class of interest



Read the student **newspaper**



Talk to students and faculty



Participate in **overnight stays and attend college preview days**



Naviance

- **What is it?** A web-based software tool that allows you to:
 - Take Interest Inventories and Personality Assessments
 - Explore Careers
 - Research Colleges and majors
 - Research Scholarships
 - Create a resume
 - Request Letters of Rec and Transcripts
- **How to Log In**
 - **Students:** Log In with Clever
 - **Parents:** Go to: <https://bsd405.org/about/initiatives/college/naviance/> Choose your student's high school. Check email for Naviance log-in instructions for parents sent in early December. If you need help, contact your students' school.



Naviance – Research Tool

Naviance Home Self-Discovery Courses Careers **Colleges** Planner 11th Grade

College Home
Find Your fit
SuperMatch College Search
College Events
Scattergrams
Advanced College Search
College Lookup

Research Colleges
Colleges I'm Thinking About
College Visits
College Compare
College Resources
Acceptance History
Enrichment Programs
College Maps

Apply to College
Colleges I'm Applying To
Manage Transcripts
Test Scores

Scholarships & Money
College-Specific Scholarships
National Scholarship Search
Scholarship Search
Favorite Scholarships



Naviance – Research Tool

Naviance Home Self-Discovery Courses Careers **Colleges** Planner 11th Grade DE EN

- College Home
- Find Your fit**
- SuperMatch College Search
- College Events
- Scattergrams
- Advanced College Search
- College Lookup

Research Colleges

- Colleges I'm Thinking About
- College Visits
- College Compare
- College Resources
- Acceptance History
- Enrichment Programs
- College Maps

Apply to College

- Colleges I'm Applying To
- Manage Transcripts
- Test Scores

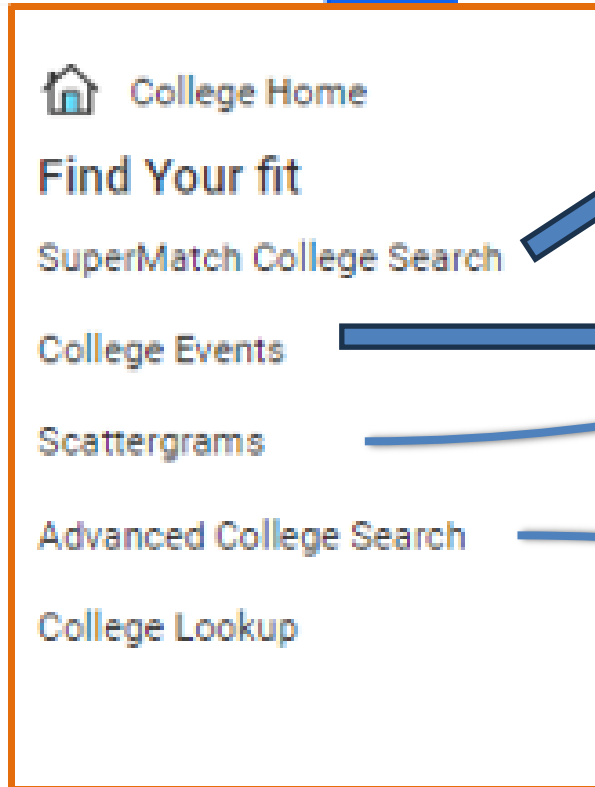
Scholarships & Money

- College-Specific Scholarships
- National Scholarship Search
- Scholarship Search
- Favorite Scholarships



Use Naviance to Find your Fit

Naviance Home Self-Discovery

A screenshot of the Naviance website's "Find Your fit" menu. The menu is enclosed in a brown border and contains the following items: "College Home" with a house icon, "Find Your fit", "SuperMatch College Search", "College Events", "Scattergrams", "Advanced College Search", and "College Lookup". Blue arrows point from "SuperMatch College Search", "College Events", "Advanced College Search", and "College Lookup" to corresponding orange callout boxes on the right.

Find Colleges that **match** your important criteria.

See how you **compare to other students** who applied to that college.

Find **events** in your area for colleges on your list.

Save your search and continue later as you change preferences.



Naviance – Comparing Data

CWU Central Washington University Ellensburg, WA, United States cwu.edu

[Communicate](#) [Apply Online](#) [Learn More](#)

Overview Studies Student Life **Admissions** Costs

NEXT DEADLINE
February
1
Priority Fall Deadline
[See all deadlines](#)

APPLICATION FEES
\$60
Freshman application
SAT: 450, GPA: 3.18

ACCEPTANCE RATE
78%
Check out Scattergrams to see how this relates to you
from 2023

IMPORTANT POLICIES
No Early Decision
No Wait List
Registration By Appointment Only
Rolling Admissions
Rolling Notification
Test Optional

HARVARD UNIVERSITY Harvard University Cambridge, MA, United States harvard.edu

[Virtual Tour](#) [Communicate](#) [Apply Online](#) [Learn More](#)

Overview Studies Student Life **Admissions** Costs Spotlights

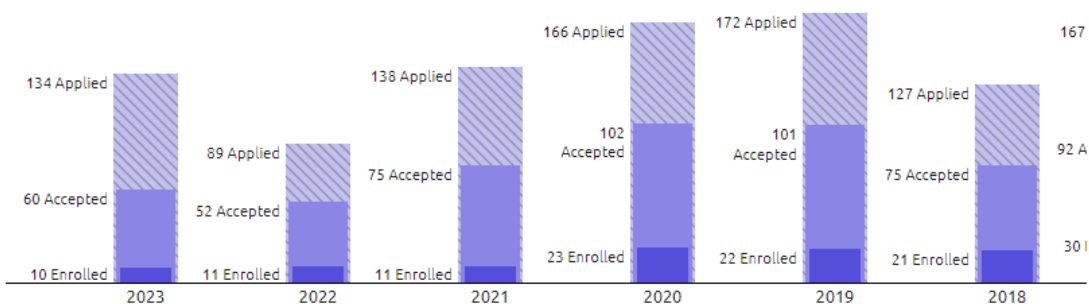
NEXT DEADLINE
November
1
Fall 2024 Term
Restricted Early Action Deadline
[See all deadlines](#)

APPLICATION FEES
\$75
Freshman application
SAT: 1013, GPA: 3.97

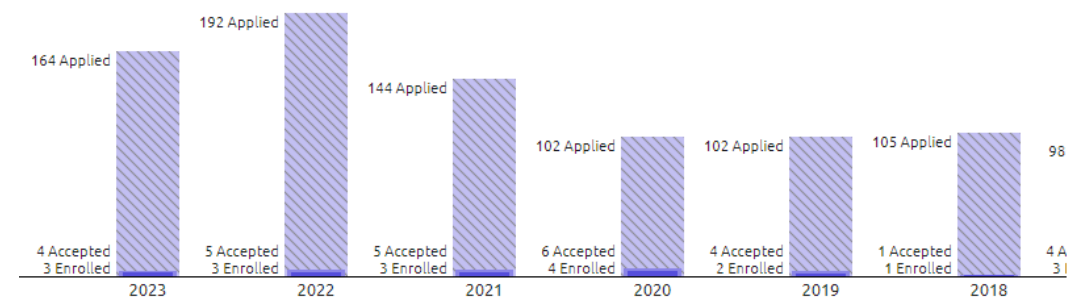
ACCEPTANCE RATE
4%
Check out Scattergrams to see how this relates to you
from 2023

IMPORTANT POLICIES
Competitive Admissions
No Early Decision
Notify By Date
Test Optional
Wait List

Your high school's application history

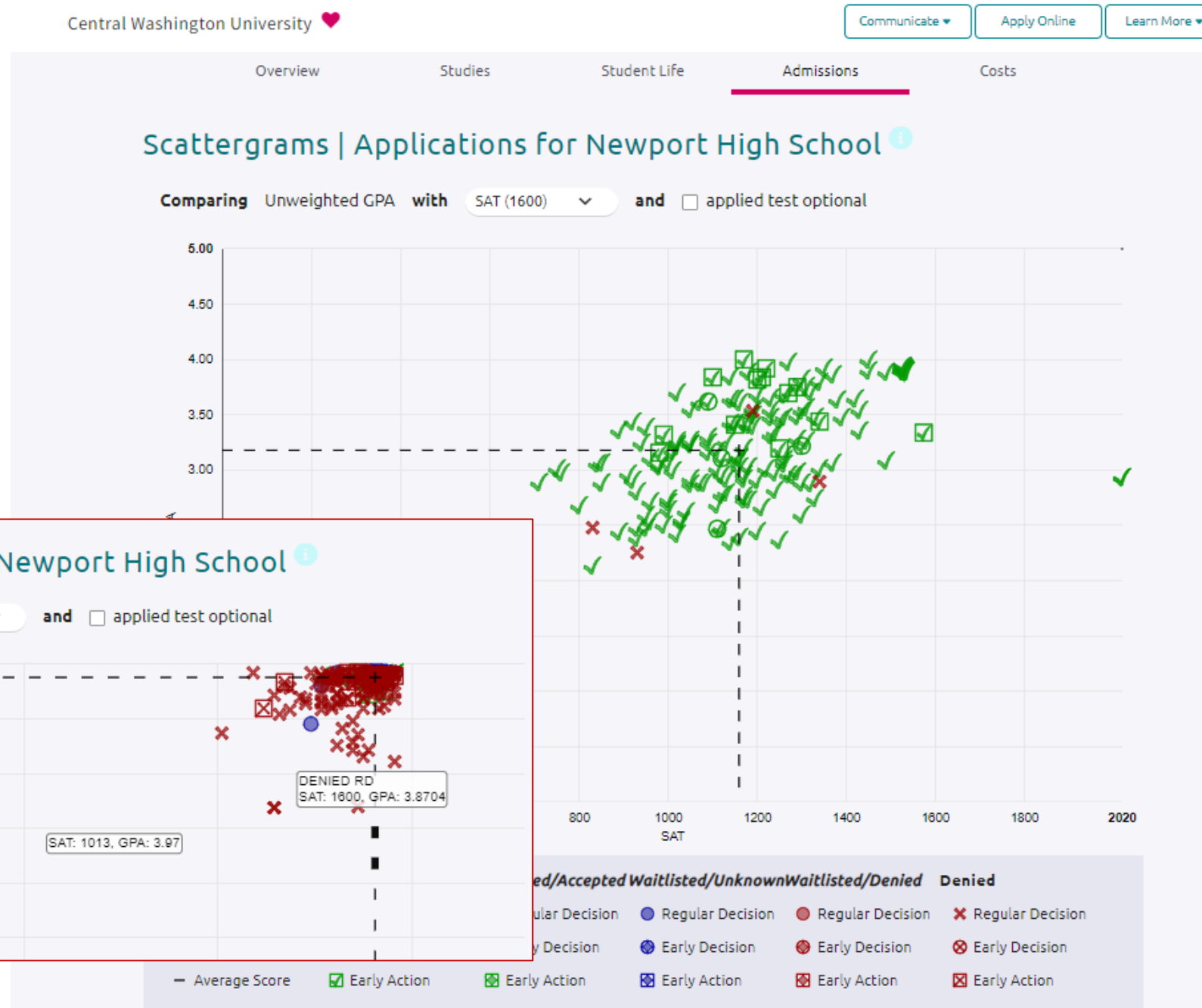


Your high school's application history





Naviance – Finding Fit with Scattergrams





Apply - Components of a College Application

Essay

Strength of Curriculum

Extracurricular Activities

Grades in College Prep

Grades in All Courses-
no weighted grades
in WA state

Admissions Test
Scores (SAT/ACT) &
AP/IB scores

Teacher
Recommendation

Counselor
Recommendation

Student's
Demonstrated
Interest

Application Portals-
Common
Application/Coalition

Interview

Class Rank (our
district does not rank
students)



COMMON APP READY

Completing the Common App

Each year, more than 1 million students apply to more than 1,000 Common App member colleges worldwide through our online college application platform.

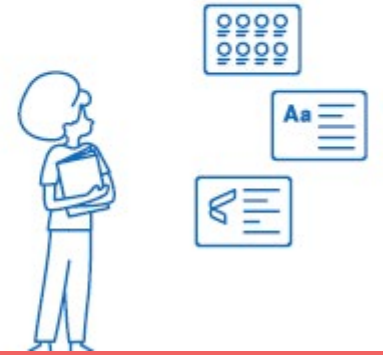
Naviance and Common app are integrated simplifying the submission of school reports, counselor & teacher recommendations and transcripts.

The Common app dashboard helps student track documents and important deadlines.



How the first-year Common App works

A quickstart guide for students using the first-year Common App.



- [Create a Common App account](#)
 1. Gather materials
 2. Create an account
 3. Add colleges
 4. Match Common app & Naviance
 5. Understanding requirements & deadlines
 6. Plan and edit essays
 7. Submit your applications

BSD COLLEGE CONFERENCE SERIES

JANUARY 24 - FEBRUARY 29, 2024

www.bsd405.org/cc2024



Putting Yourself on Paper: Writing the College Essay— All Sessions

Presenter: Jennifer Townsend, English Teacher, Bellevue HS

The college essay can be a critical part of the college application. Strategies to respond to essay prompts will be reviewed as well as ways to avoid mistakes and how to choose a topic that is appropriate for the essay. Recommended for 10th and 11th grade students.



Please watch the College Conference page on the BSD website for the conference schedule, session descriptions, links to join sessions and session recordings.

www.bsd405.org/cc2024

BSD COLLEGE CONFERENCE SERIES

JANUARY 24 - FEBRUARY 29, 2024

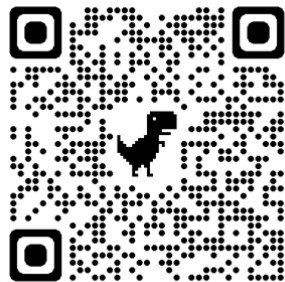
www.bsd405.org/cc2024



College Admissions for students with IEP's and 504's--Setting Students up for Success

Presenter: Sally Sue McDonald, Special Education Coach, Bellevue SD

If your student has a 504 Plan or an IEP, then this session is a must. You will learn what support is available in college, the documentation you will need to provide, examples of college services and programs, and how to prepare for college while in high school. Recommended for students in all grades who have special needs.



Please watch the College Conference page on the BSD website for the conference schedule, session descriptions, links to join sessions and session recordings.

www.bsd405.org/cc2024

BSD COLLEGE CONFERENCE SERIES

JANUARY 24 - FEBRUARY 29, 2024

www.bsd405.org/cc2024



Save Thousands on the Cost of College

Presenter: Peg Keough, Director of Education, College Aid Pro

Learn how colleges assess your eligibility for financial aid, the aid application process, the sources of aid (e.g., scholarships and grants) and how you figure out if you are eligible for need-based aid. Colleges are discounting their cost of attendance many times by more than \$10,000 per year. Learn how you can realize these discounts (even if you are not eligible for need-based aid) and how you can create a comprehensive college funding plan to minimize your net cost of college.

Recommended for parents/guardians.



College Aid Pro™



Please watch the College Conference page on the BSD website for the conference schedule, session descriptions, links to join sessions and session recordings.

www.bsd405.org/cc2024



Application Timeline for Seniors

Senior Year	August-October	<ul style="list-style-type: none"><input type="checkbox"/> Make Common Application account www.commonapp.org<input type="checkbox"/> Senior Counselor Lessons in classrooms and Senior Blitz<input type="checkbox"/> Retake SAT/ACT tests if needed<input type="checkbox"/> Attend Super Wednesday for essay help<input type="checkbox"/> Finalize college applications, write essays and finalize activities/resume<input type="checkbox"/> FAFSA/WASFA Typically opens on October 1
	November-January	<ul style="list-style-type: none"><input type="checkbox"/> Early decision and early action applications due (Nov 1-15)<input type="checkbox"/> Regular applications due<input type="checkbox"/> Apply for scholarships
	Spring	<ul style="list-style-type: none"><input type="checkbox"/> Colleges notify students of decision (Dec-April)<input type="checkbox"/> Decision Day (May 1) Tuition and housing deposits due<input type="checkbox"/> Apply for scholarships- Local and National<input type="checkbox"/> Have fun and enjoy your last days of high school



BELLEVUE
COLLEGE



Bellevue College is an open admissions institution. They believe everyone should have access to a life-changing education.

Bellevue College will offer a fall application workshops at most of the high schools every spring.

Bellevue College has a partnership with Eastern WA University and offer 14 bachelor degree programs. These are 4-year degrees.

Bellevue College offers an Occupational Life Services and Neurodiversity Navigators program for neurodiverse students.

Bellevue College offers on campus housing for students. They offer suites and apartments for up to 400 students.

Bellevue College is a great school to finish the first two years of a 4-year degree and then transfer to a 4-year college or university. There are transfer advisors available to support students.

Bellevue College is home of the Bulldogs, including 11 men's and women's sports team that have earned regional and national awards



Guaranteed Admission Program

- Bellevue School District is excited to announce qualifying Bellevue School District seniors will receive guaranteed admission to five Washington colleges and universities through the Guaranteed Admissions Program or GAP. Guaranteed admission is not free admission. Participating colleges and universities are:

- Central Washington University
- Eastern Washington University
- The Evergreen State College
- Washington State University
- Western Washington University
- University of Washington Tacoma Campus
- Pacific Lutheran University
- St. Martin's University

- For more and important information:

- <https://bsd405.org/services/counseling/guaranteed-admissions-program-gap/>



Get admitted. Guaranteed.

With the Guaranteed Admissions Program, you're just steps away from admission to a Washington public four-year college or university.

All you need to do is:

1. Complete and submit your application
2. Submit your high school transcript
3. You're in!

Talk to your advisor today or visit <https://bit.ly/WaGap> to learn more.





Share Student Info For GAP

to release the information

[Home](#) [Status](#) [My Account](#) [ParentVUE](#) [Logout](#)

Student name and photo in school yearbook (if the school has one).

• By checking this box it is OK to release the information

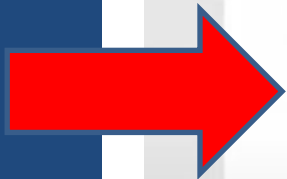
We are **required by law** to release your **student's directory information**, including address and phone number unless you tell us not to.

• By checking these boxes it is **OK** to release the information to:

Military recruiters

Institutions of higher learning

[<< Previous](#) [Save And Continue >>](#)





High School Transcripts

Includes a list of all classes taken, grades and cumulative GPA

All classes taken or attempted must show on the transcript

High School level courses taken during from middle school are automatically on the high school transcript (for example: Algebra, Geometry, Biology, World Language courses) UNLESS requested to be removed (by end of 11th grade.)

Language credit can be earned through competency-based testing – however, some may colleges require that students have courses on transcript



Tips for Families



- Take your student to visit local colleges- so many different types in WA state! Public, Private, Big, Medium and Small
- Talk to your student about how you picked your college and career!
- Have your student talk to friends, teachers and family, too
- Have conversations about how to pay for college- do this at the beginning of the search! Cost should be discussed openly.
- Encourage your student to:
 - Take advantage of all the tools on Naviance
 - Get involved in clubs, sports and activities during HS
 - Community service is a great way to build their confidence, find out about possible career opportunities, to give back to the community and to build their resume
 - Attend the college representative visits at their school. Schedules are posted in Naviance and with the College/Career Center

BSD College Conference— Wednesday, February 7, 2024

Participate *In Person* or *Online*

In person

**Nearly all speakers will be in person at Highland*

Highland Middle School

15027 Ne Bel/Red Road

6:00- Keynote by Dr. Kelly Aramaki

6:40-7:10- Session A

7:20-7:50- Session B

8:00 – 8:30 – Session C

Online

Sessions will be live streamed on Teams from Highland

Go to www.bsd405.org/CC2024

Links to join sessions will be posted here

After each session, return to the College Conference page to join the next



Please watch the College Conference page on the BSD website for the conference schedule, session descriptions, links to join sessions and session recordings.

www.bsd405.org/cc2024



Thank you for Coming!