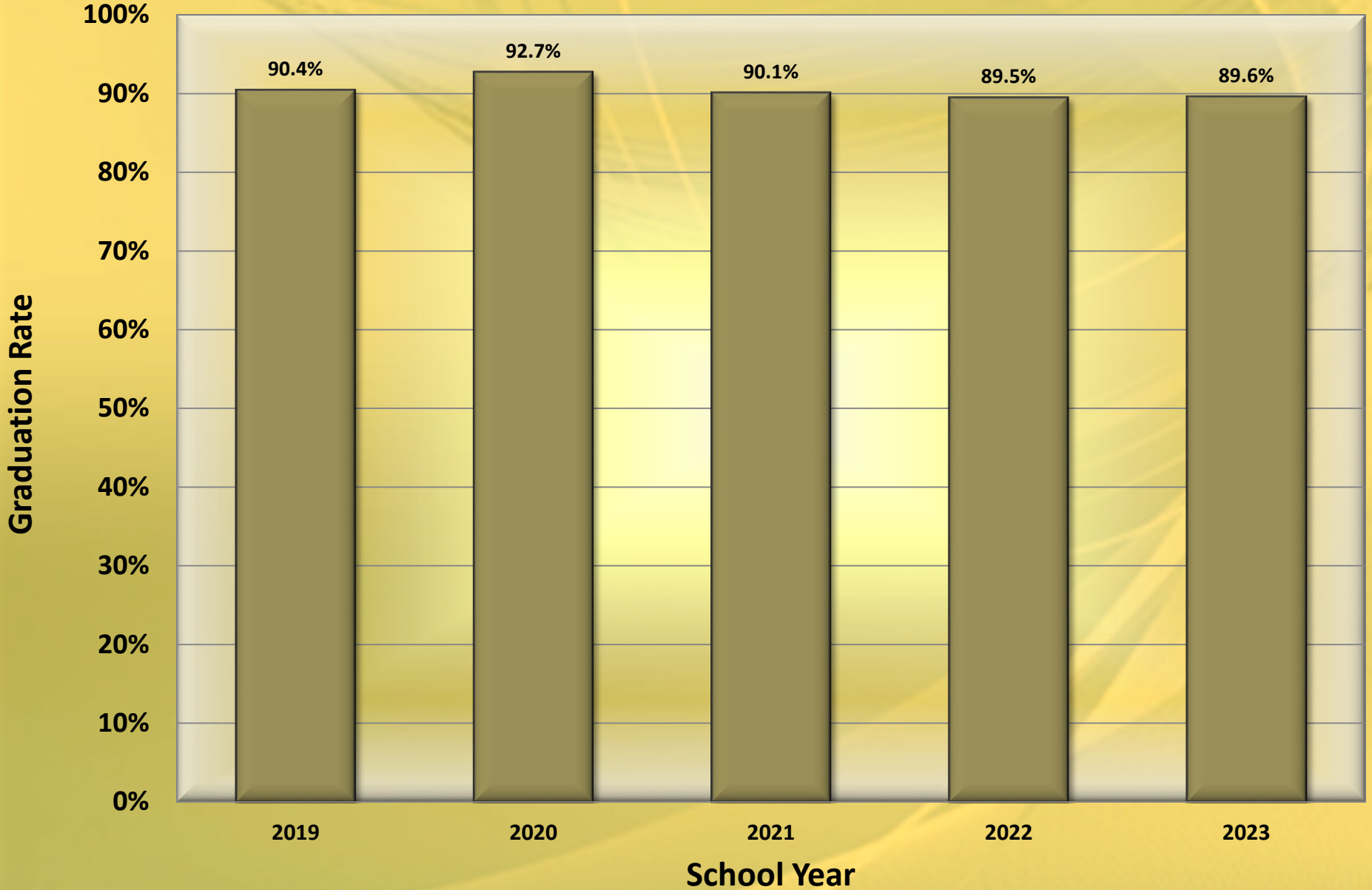
The background is a solid yellow color with several thin, curved, and overlapping lines in a slightly darker shade of yellow, creating a sense of motion and depth. These lines sweep across the frame from the top left towards the bottom right.

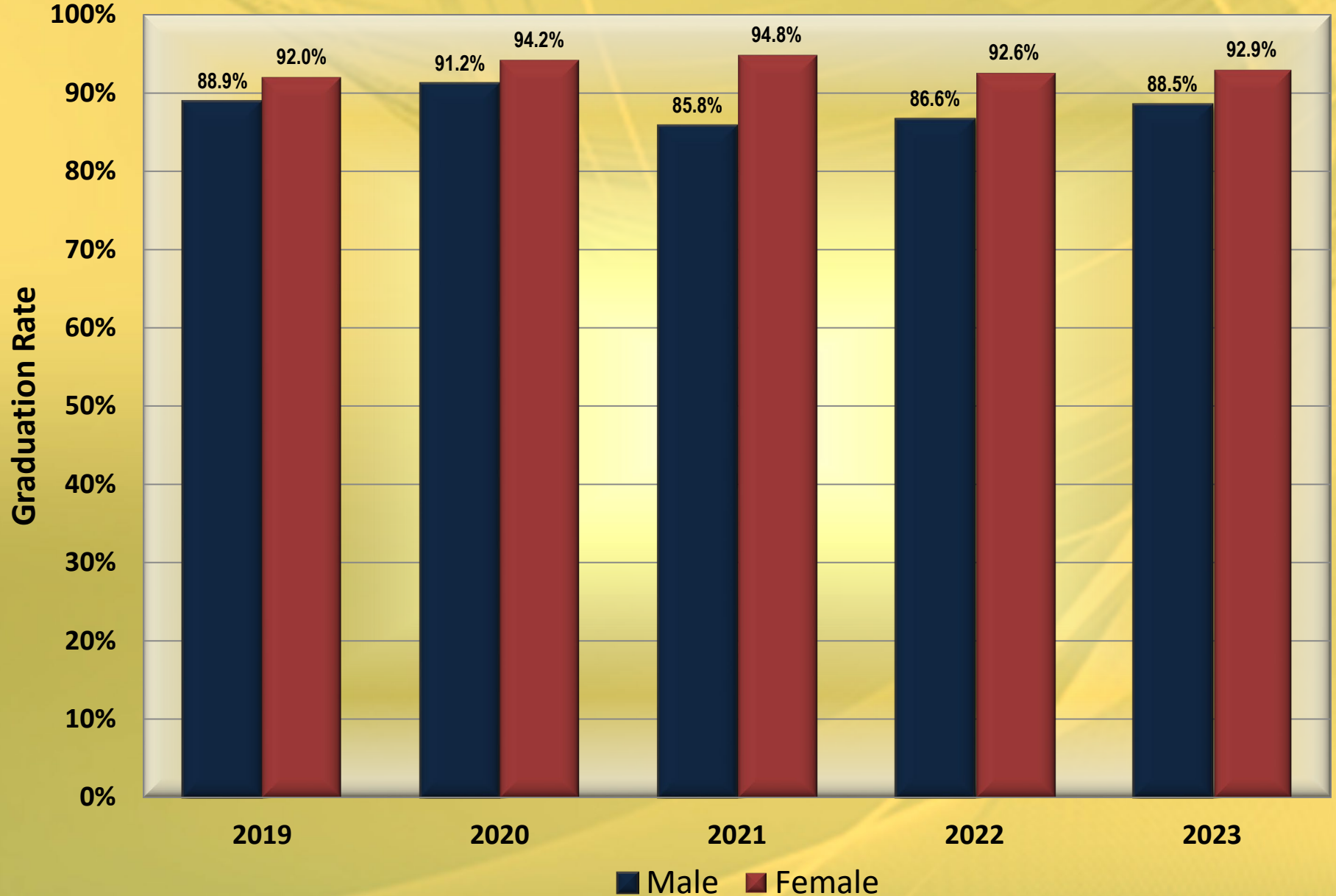
Graduation

Class of 2023

Graduation Rate by School Year

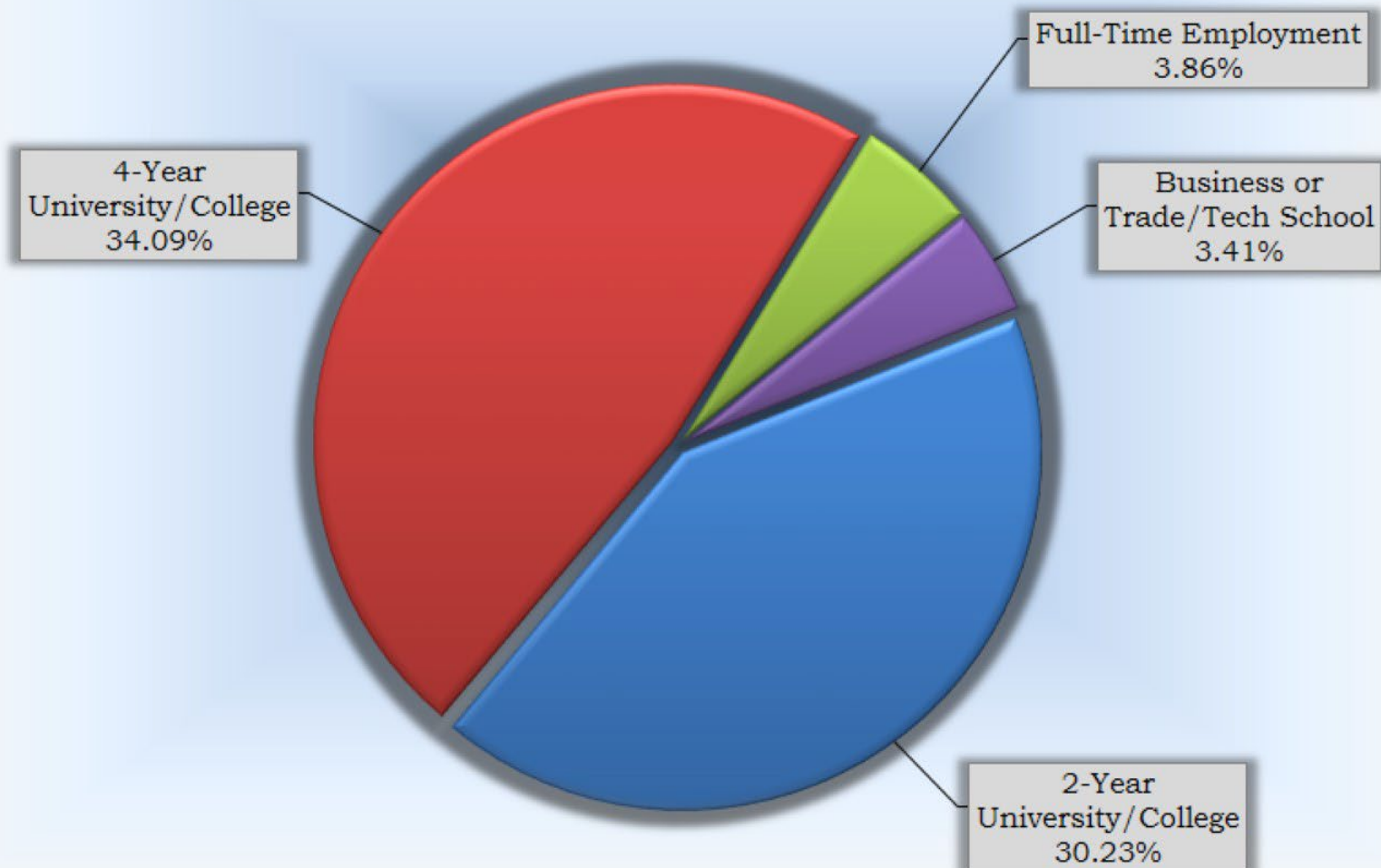


Graduation Rate by Gender and School Year



Exit Survey 2022-2023

Plans Following Graduation

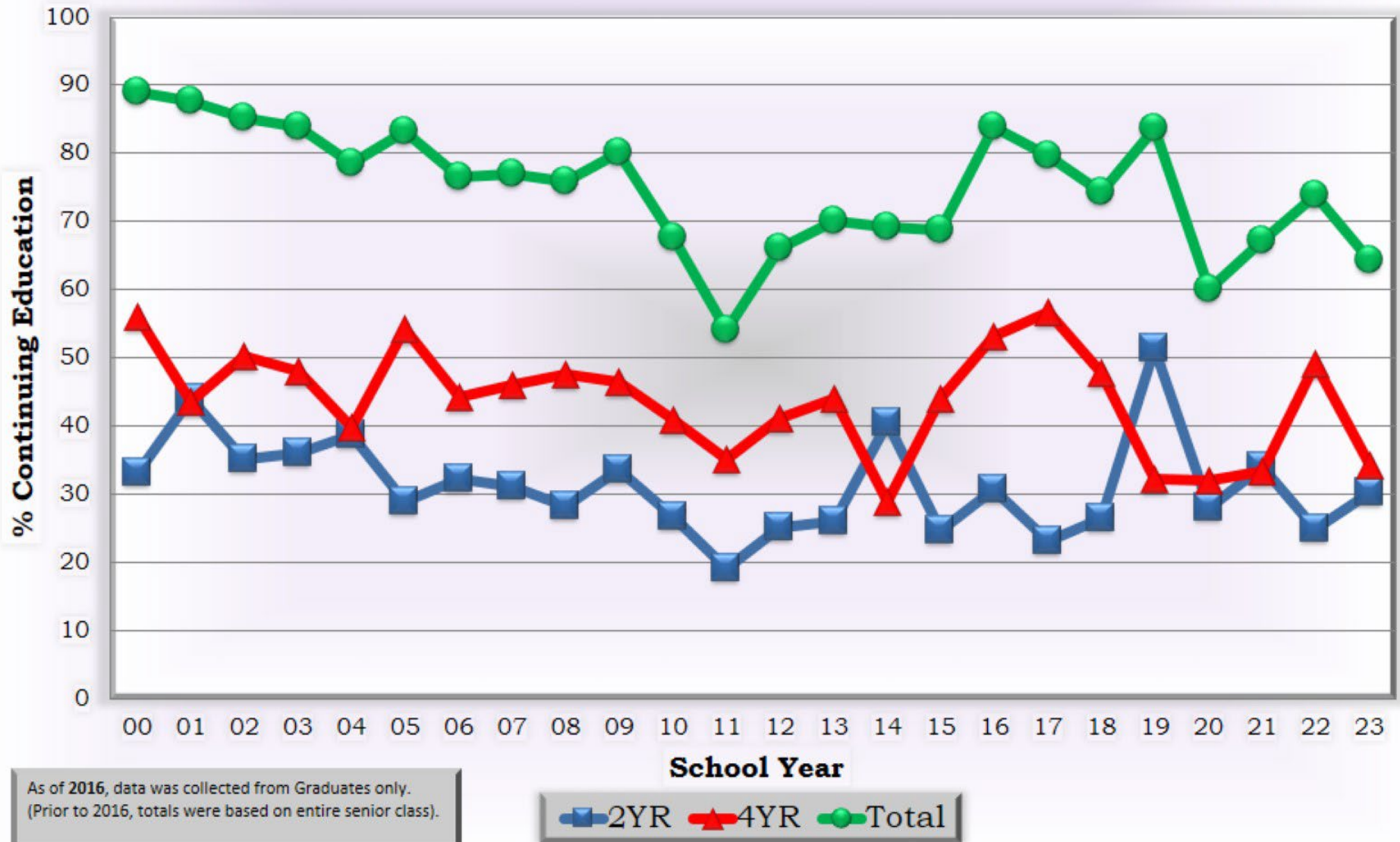


Top 10 Colleges

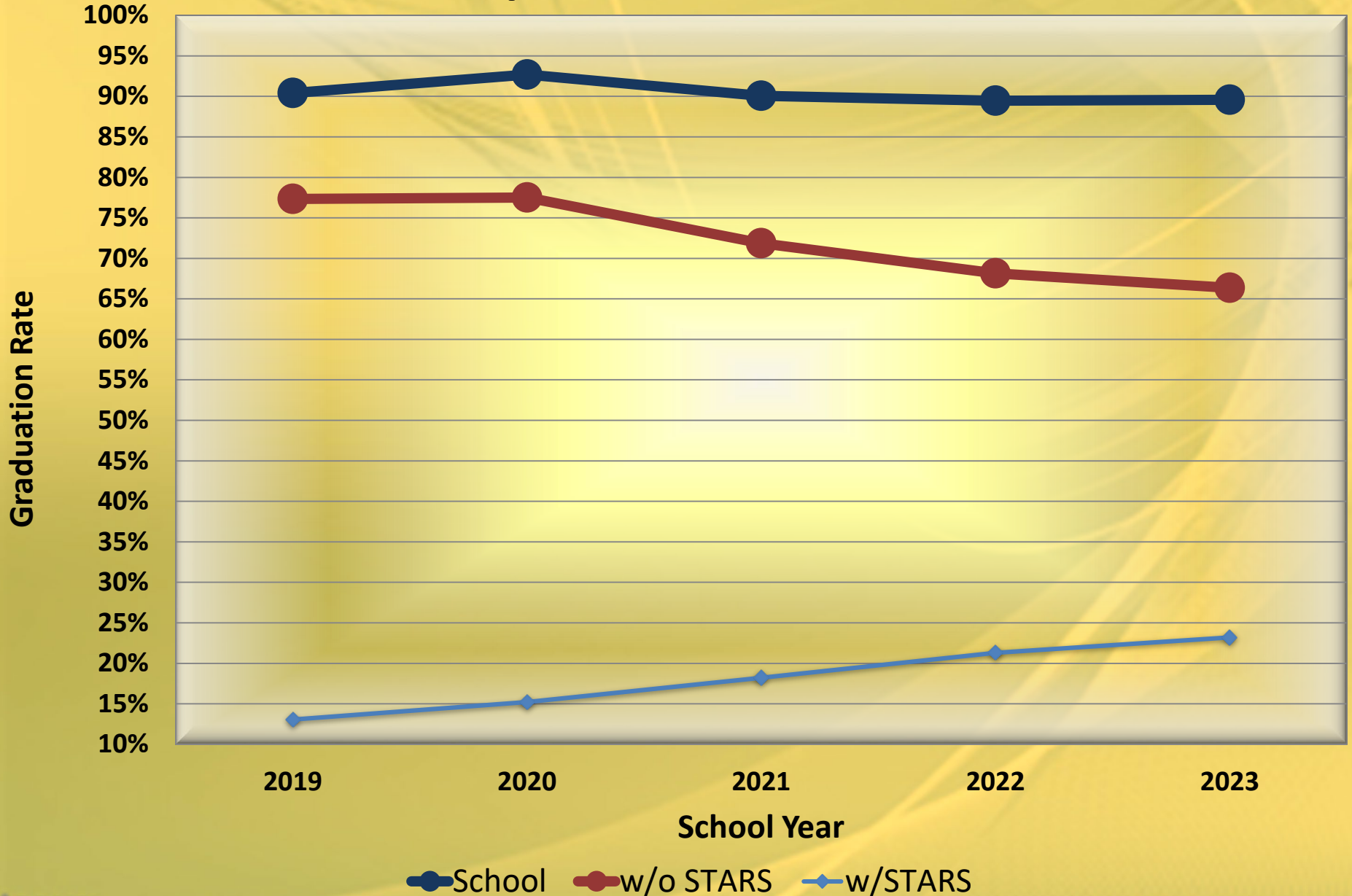
College	Count	Percent
College of DuPage	117	26.59%
Aurora University	23	5.23%
Northern Illinois University	17	3.86%
University of Illinois Urbana-Champaign	16	3.64%
Illinois State University	14	3.18%
University of Illinois-Chicago	11	2.50%
Benedictine University	9	2.05%
Universal Technical Institute	5	1.14%
North Central College	4	0.91%
Waubonsee Community College	4	0.91%

Exit Survey 2000-2023

% of Graduates Continuing Education

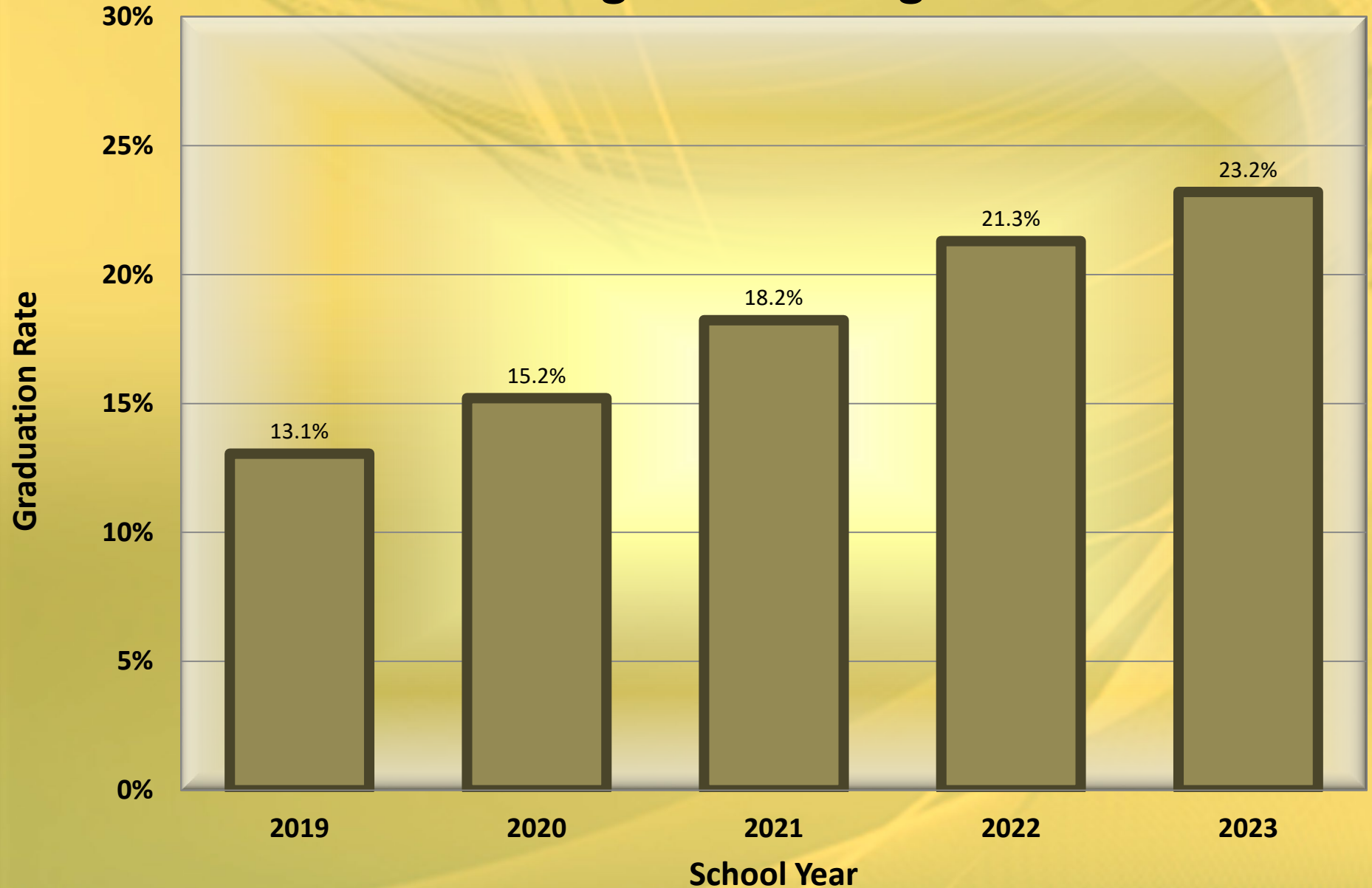


Graduation Rate by School Year Reported VS/With No STARS



Year	Total	w/o STARS	w/STAR S	#Students	#Graduates
2001	88.06%	79.45%	8.60%	28	
2002	92.70%	82.88%	9.82%	43	406
2003	96.70%	86.75%	9.94%	48	467
2004	97.10%	86.16%	10.92%	56	498
2005	96.30%	84.93%	11.35%	58	492
2006	95.70%	84.30%	11.40%	53	445
2007	95.84%	85.74%	10.10%	51	484
2008	96.12%	87.35%	8.78%	43	471
2009	96.71%	87.50%	9.21%	42	441
2010	97.91%	84.31%	13.60%	65	468
2011	94.65%	83.21%	11.64%	61	497
2012	94.17%	83.54%	10.63%	51	452
2013	98.10%	87.89%	10.28%	56	535
2014	93.80%	83.27%	10.48%	52	465
2015	97.54%	82.59%	14.96%	67	437
2016	96.44%	79.32%	17.09%	81	457
2017	97.10%	83.04%	14.06%	63	435
2018	94.20%	77.53%	16.60%	82	465
2019	90.40%	77.35%	13.05%	68	471
2020	92.90%	77.71%	15.21%	73	446
2021	90.08%	71.86%	18.22%	90	445
2022	89.45%	68.15%	21.30%	105	441
2023	89.57%	66.37%	23.20%	118	455

Percent of Graduates with Requirements Met Through STARS Program



Number of Graduates with Requirements Met Through STARS Program

