



soirée
PETILLANTE
ROCHAMBEAU
GALA 2024



SATURDAY, MARCH 23
6:00 PM

**BUBBLY BAR, DINNER, SILENT & LIVE
AUCTIONS, MUSIC & DANCING!**

Black tie optional

The Mayflower Hotel
1127 Connecticut Ave NW
Washington, DC 20036

WWW.ROCHAMBEAUORG/GALA





ROCHAMBEAU

THE FRENCH INTERNATIONAL SCHOOL

MISSION

Rochambeau fosters excellence through rigorous, accredited French and International curricula. The school provides a safe and caring environment that welcomes students of all backgrounds and nationalities, nurturing them to become plurilingual, confident, and open-minded critical thinkers.

VALUES

Pursuit of Excellence

We expect and help everyone to do their best.

Intellectual Rigor and Fairness

Strong emphasis on hard work and work well-done.

Adaptability

To a changing world.

Respect

For diversity, the individual, ideas, cultures and the environment.

Support and Cooperation

Between and among our students, our staff and our community.

Openness and Transparency

In our decision making process and communication.

VISION

Rochambeau, the French International School, empowers students to thrive in an evolving world, positively impact their communities, and value diversity and multiculturalism.





Order of
EVENTS

COCKTAIL RECEPTION

WELCOME TOAST

DINNER SERVICE

GUEST SPEAKERS

◆ His Excellency Laurent Bili, the Ambassador of France
to the United States

◆ Samantha & Daniel Pressman, Rochambeau Terminale Students

SILENT AUCTION CLOSES

LIVE AUCTION

Red Apple Auctions, Auctioneer

RAISE THE PADDLE

Red Apple Auctions, Auctioneer

MUSIC AND DANCING



WHY WE GIVE

Your gift to the Gala makes possible important investments and advancements in Financial Aid for students and school academic projects, STEM activities, modern learning, and outdoor play and sports facilities.

Raise the paddle to fund need-based financial aid, scholarships, and tuition support. A robust scholarship and Financial Aid program is vital for the school's continued growth. Many families rely on some level of tuition assistance, and your gift ensures that a Rochambeau education is accessible to all students who have the potential and desire to excel at our school.

Other **fundraising initiatives** will facilitate needed enhancements in outdoor play and athletic facilities. By donating towards these improvements, you are investing in physical structures and in the overall well-being and future success of our students and school.

Every donation, regardless of the amount, makes an immediate impact. We are grateful to you - the parents, alumni, faculty and staff, and other community members who generously contribute to Rochambeau's future.

WHY WE GIVE

by the numbers

55

different languages spoken
across the Rochambeau
Community.

69

years since Rochambeau
opened in 1955!

10%

of students received
financial aid in the 2023-2024
School Year.

\$7,425

the average amount of
scholarship funds distributed
per student for the 2023-2024
School Year!

\$300,000

Amount needed to cover the Maternelle playground
and refurbish the Secondary School track.

AEROLAB




WIND TUNNEL DESIGN, FABRICATION & SERVICE

SINCE 1947

8291 Patuxent Range Rd
Jessup, Maryland 20794
USA

contact@aerolab.com
301-776-6585

WWW.AEROLAB.COM

 @aerolabwindtunnel

Thank you SPONSORS



DIAMOND



TRUIST 

GOLD



 **Brown & Brown**
INSURANCE®

SILVER



MEDIA



Our Gala Auction Video was
generously produced by a
Rochambeau Parent

Antonio Souto Productions

alioth74@gmail.com



EVOO GOLD

[.com](https://www.evoo.com)



instagram website



SPRING FAIR

C'est la fête de l'école
ROCHAMBEAU

JUNE 1, 2024 | 11AM -3PM



The world is your playground!

FRENCH IMMERSION CAMPS | AGES 3 1/2 - 11



REGISTER ON
rochambeau.org/summer-camps

Thank you

TO OUR COMMUNITY

*As of 3/20/2024

Gala Co-Chairs

Alexandra Amiel Vitaletti
Virginie Coder Saget

Phebe Abiye
Luis Aguilar
Idile Ahmed
Hella Akrouf
Emmanuelle Angarita
Henriette Angoulvant
Erika Aparakakankanange
Martine Arcaz
Raphael Attie
Christel Babot-Sauvage
Ani Balayan
Christelle Beaujon
Helene Bellaches
Youri Billet
Sarah Breitenother
Christina Busso
Mary Clayton Carr
Estelle Chabert
Patricia Chagnon
Sylvie Chazelle
Farida Chergui
Camille Couderc
The TPS classes
The GS classes
The CP classes
CP Immersion class
The CM2A class
The CM2B class
Andreas and Marie Comminos
Adriana Ortiz de Raet
Celine Baudlet Delorme
Ayanis Dennis
Marianna Dervecelli
Aissatou Diop
Isabelle Drake del Castillo
Leila Chennoufi-Di Leva

The Digby Family
Olga Dimitriadis
Elodie Domenge
Cyril Dorange
Leslie Dorit
Mathilde Durand
Nicole Fabri
Elizabeth Farrelly
Tess Finnegan
Karine Fradet
Laetitia Han-Byeol van Hecke
Anoush Gavoor
Vanina Goldzstein
Stephanie Guerin
Amanda and Michael Gujda
Meaghan Hlinka
Julie Huin
Aurelie Johnson
Nyala Joyce
Noor-Amelie Kamaruzzaman
Victoria Kidd
Catherine Krim
Jessica Kritz
Emma Larocche
de Larosiere-Petty Family
Celia Laurent
Laurence Machenaud
Carène Maurel
Benedicte Maurice
Gaelle Mondesir
Nawel Mostefa
Albane Mourcou
Danielle Moussalli
Valentina Nahon
Beatriz Navarro
Odile Nicol

Kayko Novotny
Camille Ogez
Katie Patterson
Juanita Pied
Jean-Pierre Plaa
Daniel Pressman
Samantha Pressman
Fenohasina Rakotondrazaka
Virginie Rampon
Ike Relacion
Maria Rivera-Lacombe
Jessica & Michael Rosenthal
Cynthia Rouhana
Marc Roux
Juan Carlos Ruano
Eema Sahrai
Virginie Saint-Omer
Magda Salman
Maria Eugenia Schwermer
Meredith Shields
Ludmila Silva
Antonio Souto Fraguas
Cristen Steele
Sahar Tabbara-Pareja
Anne Tichadou
Charlotte Toto
Rhonda Trad
Shawna Tunnell
Irina Ona Lemos
Yazmin Vando Flores
Phillippe Vanhille
Vanena Wilmot
Michael Wise
Jean Christophe Yin Yeung Cho
Barbara Zappe
Claire Zietz



**MECHANICAL ENGINEERING &
CONSTRUCTION CORPORATION**

CELEBRATING 20 YEARS...

**As Maryland's premier Mechanical Contractor
for HVAC Service and Maintenance**

Deborah A. Dietrich

Account Manager/Business Development

Cell: 301-310-5147

Email: deborahd@m-corp.us



*Solutions
at a Higher
Level*

**Celebrate with
Us 20 Years of
Advisory
& Tax Services**

For companies and individuals
Between United States and
France



SI JADE
FIDUCIAL
20TH ANNIVERSARY

Washington DC:

4720 Montgomery Lane, suite 205
Bethesda, MD 20814
Tel: (240) 348-8850
washingtonejade-fiducial.com

Jade-Fiducial.com



**BUTLER
AUTO & FLEET
SERVICE CENTER**

Mechanical. Collision. Paint.

For All of Your Auto, Truck,
and Fleet Repair Needs

WWW.BUTLERAUTOSERVICE.COM



Thank you



TO OUR OUTSIDE SUPPORTERS

*As of 3/20/2024



Bach to Rock
Balducci's
Barre 3
Barrie Camp
Bayard & Milan USA (Washington)
Belfint, Lyons, Shuman
Bella MedSpa
Bethesda Bagels
Bethesda Spine and posture
BoConcept
Bonjour Books
Bowlero
By Paige
Call Your Mother
Chess Wizards
Chevy Chase Arts Academy
City Dance
Coach Nate
CodeAdvantage
Cooper's Hawk
Dr. Amanda Lezanski-Gujda
Dr. Idriss
ESF Camps
Elements Massage
En Route CaribEducation
EVOO Gold
Fins Swimming
Flagship Carwash
France Channels
French-American Chamber of Commerce
Friendship Hospital
Georgetown cupcakes
Glenstone
Gorove Slade
Great Frogs
Great country farms
Green Hydrangea Flowers
Guillaume Caunègre
Heller Orthodontics
Innately Italy
Inn at Raven's Peek, LLC
Intercultural Alliances
Julii
KLM/Air France
Kaam Karite
Kendra Scott Jewelry



Kicks Karate
La Piquette
Laperaux Restaurant
Le Castel Patisserie
LifeTime Fitness
Lisa Maco Photography, LLC
Little Bloomer
Maryland Soccerplex
MOD Pizza
MVP Builders LLC
Me Land
Medical Cosmetic Enhancements
Medium Rare
Michael Wise
Mon Ami Gabi
Métier Restaurant
Nailsaloon
National Children's Museum DC
Olivia Macaron
Orangetheory Fitness
Patricia Green Collection
Perfectly Pressed
Play Bac Presse / Le Petit Quotidien
Power Hour Editing & Consulting
Rockville Fencing Academy
RTR Pilates
Souto Productions
SPA Orthodontics
Sportsrock
Spy Museum
Stable
Starbucks
Steve Mabley Art
Stone tower winery
Stretchlab
The Glow Plastic Surgery
The Kennedy Center
Trader Joe's (Darnestown Road)
Unity Dance And Movement
Washington Intl Flight Academy
Washington Nationals
Wildfire Restaurant
Y-Brush
Yong Studios
Zava Zone



LIVE Auctions



One Magnum of Champagne

Get ready to pop some serious bubbles!
Be the talk of the Gala, elevate your table's status to absolutely legendary.
Treat your table to this iconic Champagne!

Bottle of Veuve Cliquot Yellow Brut, 1.5L Magnum. Value: \$180



A weekend in an authentic Château in France

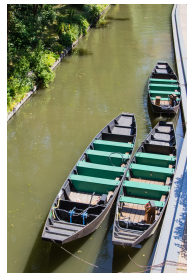
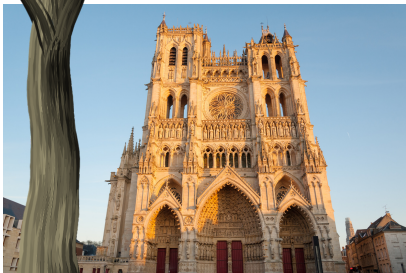
Spend a weekend in the Château de Bovelles, located in the Somme department near the city of Amiens (1 hour by train from Paris) in the company of the de Larosière-Petty family, a Rochambeau alumna.

The castle was constructed in 1769 by Jean-Baptiste Vaquette de Gribeauval, renowned for reforming the French artillery leading to military victories during the French Revolutionary Wars and Napoleonic wars, and remains in the family to this date.

During your visit, the family will share the history of the castle and the small village of Bovelles, and bring you for a guided tour of the local sites, including the Amiens Cathedral and the Saint-Leu quartier, known for its charming canalside houses and vibrant atmosphere.

2 nights (Saturday and Sunday) meals included for 2 people during the months of July and August.

Donated and owned by the de Larosière-Petty Rochambeau alumna family.
Value: \$1,000



Two Tasting Menus at the Métier Restaurant

Métier is a small and intimate restaurant, located in the heart of Washington D.C.. Métier offers creative and contemporary American cuisine with a continued dedication to hospitality. Dinner at Métier revolves around a chef-driven experience, with a creative seven-course tasting menu.

The restaurant has been designed by Darryl Carter, a Washington D.C. native and a leader in the design world, recognized for his restrained, distinguished and livable environments. Antique materials and furniture pieces are mingling with modern details to create an elegant yet warm and comfortable atmosphere.

One Michelin Star Rating.

1015 7th Street NW WASHINGTON, D.C. 20001

Beverages and tax are excluded.

Saturday nights and holidays are excluded.

Donated by the Ziebold Rochambeau family. Value: \$400



MÉTIER



Vacation in L'Ametlla De Mar, Spain

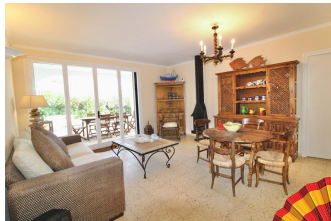
This beautiful villa is located in L'Ametlla de Mar, a picturesque fishing town located about an hour and 20 minutes away from Barcelona. Its coastline spans 16 km and boasts 30 bays with crystal-clear waters and white sandy beaches surrounded by pine trees. This charming villa is conveniently located within walking distance from the sea, making it an ideal destination for your vacation. L'Ametlla de Mar has been recognized with 5 blue flags for its beaches and one for its marina, making it the second municipality in Catalonia to receive such many awards.

The villa can accommodate up to 10 people with three comfortable bedrooms - one with a double bed and the other two with bunk beds and double beds, and three full bathrooms.

The air conditioning will provide respite from the heat, and free WiFi will allow you to share your special moments with the world. The garden offers a peaceful and private space to enjoy the fresh air. You can have fun and create unforgettable memories around the pool and barbecue area. Additionally, you can relax on the sunroof, which invites you to disconnect and contemplate the breathtaking sunsets.

Currently available for Spring break, May, July, and the last 2 weeks of August. Possibility to schedule the stay time in advance for the 2025 summer.

Donated and owned by the Ortiz de Raet Rochambeau family. Value: \$2,500



Villa in South of France for 10 people

One week stay in the village of Bargemon, "La Perle du Haut Var". Ease yourselves into the gentle mood of the picturesque medieval village and its rich history. A 5-minute walk to the village and a 1-hour drive from the Nice Airport. Ideal for families looking for peace and tranquility. 4 bedrooms, 2 bathrooms, heated pool.

Also well located for visiting the French Riviera Beaches and the Verdon canyons.

Black-out is April (last two weeks) and July 2024.

Donated and owned by the Gujda Rochambeau family. Value: \$2,500



Sunday Brunch at the Four Seasons for 4 guests

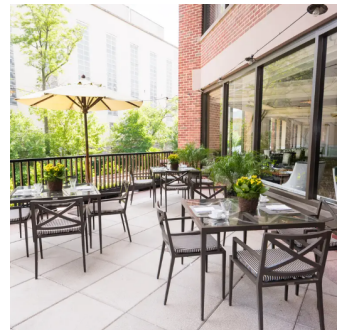
Executive Chef Bilal invites you to enjoy his Mediterranean brunch inspired by his native Jordan. Enjoy fresh salads, hummus, falafel (his mother's recipe), kabsa rice, baba ghanoush, shakshuka and grilled rack of lamb, in addition to our Seasons brunch favourites.

Executive Pastry Chef Ashish Thalakkat crafts Mediterranean delicacies such as kunafa and warbat as new additions to our Pastry Room.

2800 Pennsylvania Ave NW, Washington DC, 20007

Expiration date: 3/9/2025

Donated by the Gavoor Rochambeau family. Value: \$520



Vacation in "Beaulieu-sur-Duck" - Outer Banks

Designed for families that want a coastal inspired vacation home with comfortable amenities and a convenient seaside location. "Beaulieu-Sur-Duck" is bright and inviting inside with 4 bedrooms (7 sleeps) and 3 updated baths. In the off season, curl up with a book next to the gas fireplace. Enjoy ocean views from the deck and great room, as well as from the dune seating on the private walkway. The wide sandy beaches are only steps away, down a direct ocean access shared boardwalk.

The home has a paved bike path that leads straight to the heart of Duck Village, and is within walking distance of bike, kayak and SUP rentals.

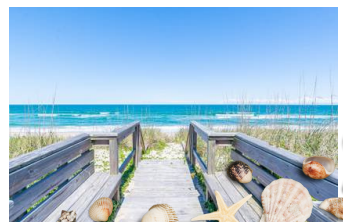
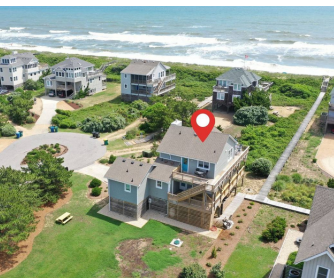
Amenities include upgraded linens with beds made prior to your arrival, pet friendly, keyless entry, wireless internet access, cable tv, gas fired water heater with unlimited hot water on demand, outdoor shower and charcoal grill.

Wonderful memories await you and your family at Beaulieu-Sur-Duck, and you will want to return again and again.

Duration: one week from starting on a Sunday leaving the following Sunday by 9:30 am. Available from Oct 1st to April 27th; note the house is not available for holidays throughout the year.

In terms of the school break dates: Fall break (Oct 21-25) - available | Winter break (Jan 1-3) - not available | Feb break (Feb 17-21) - not available | Spring break (April 14-25) - available

Donated and owned by the Lacombe Rochambeau family. Value: \$3,500



One week vacation in Breckenridge, Colorado

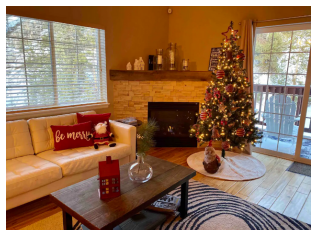
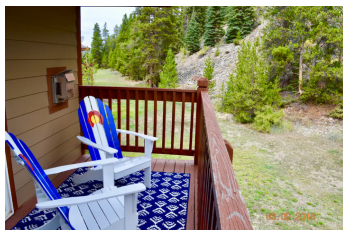
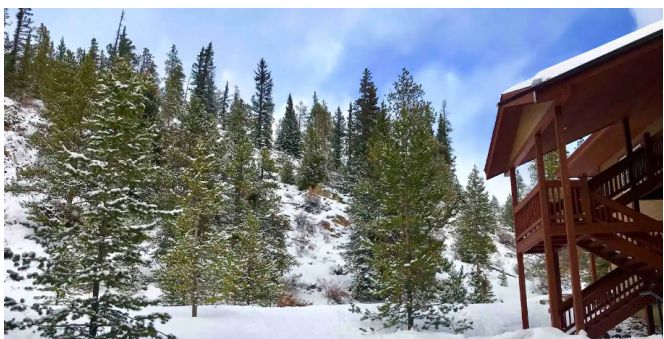
Located just 5 miles from downtown Frisco and downtown Breckenridge, this recently renovated condo is the perfect mountain getaway for your family and friends.

The spacious unit, which features high-end contemporary furnishings, has 2 bedrooms, one loft, and 2 full baths. After a day of adventure and skiing, you can come home to a warm fire in the living room or take a dip in the community hot tub.

The condo's location allows you to enjoy all that Summit County has to offer, from hiking and mountain biking on the amazing scenic trails, to Fly Fishing in the clear waters of the beautiful Swan and Blue Rivers. Explore the world class skiing of Breckenridge, Keystone, Copper Mountain, and Vail, all within 30 minutes.

**Available year-round,
excluding the dates
around Christmas and
New Year, as well as the
February break.**

Donated and owned by the
Ortiz de Raet Rochambeau
family. Value: \$2,850





Let's change our communities for the better

We are proud to support Rochambeau, The French International School, and those working to build a brighter tomorrow for students.

Learn more at cibc.com/US

The CIBC logo is a registered trademark of CIBC, used under license.
©2024 CIBC Bank USA.



America's Wine Superstore®

The country's largest independent retailer of fine wine



GREEN
HYDRANGEA
FLOWERS

3404 Connecticut Avenue NW
Washington, DC 20008

@greenhydrangeaflowers
info@greenhydrangea.com

www.greenhydrangea.com

GOROVE SLADE

Transportation Planners and Engineers

*Proven leaders
advancing transportation
in our communities.*

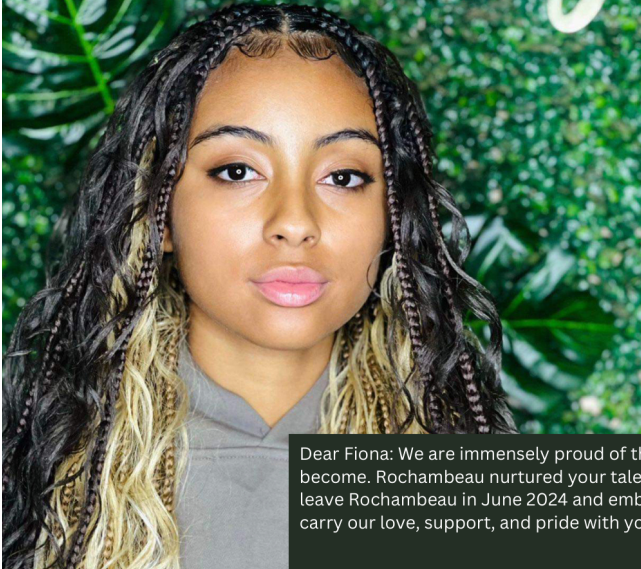
Gorove Slade offers a comprehensive suite of transportation engineering, planning, design, parking, operations, and entitlement services.



Headquarters - Fairfax, VA
Alexandria, VA Bethesda, MD
Richmond, VA Washington, DC

GOROVESLADE.COM

Dear Rochambeau: Tonight, while you partake in the yearly gala without our presence (our inaugural absence), we wish to express our deep appreciation for the thirteen years. From Fiona's initial days in Moyenne Section to her current final year, Rochambeau has been her second home. With 8 university acceptances and 7 academic scholarships, we are filled with gratitude. Misaotra betsaka Rochambeau!



A heartfelt thank you to our extended village, to mention just a few among the many..

Adams - Alpert
Bagnato - Baudlet
Billard - Boutekka
Cho - Comminos
Curioni - Dokic
Durand - Fabre
Fradet - Jacquenet
Keller - Kidd
Kimse - Layour
Legros - Martinez
Meriot-Burn - Papin
Piard - Trad
Vado - Vanhille

Dear Fiona: We are immensely proud of the exceptional woman you've become. Rochambeau nurtured your talents, passions, and character. As you leave Rochambeau in June 2024 and embark on new and exciting beginnings, carry our love, support, and pride with you.

With all our love, Maman et Papa

RochamBio

"Faisons grandir notre lycée plus vert!"

"Let's make Rochambeau grow greener"



Rochambio is a project led by the Eco Délégués (Ecological Student Council) with the help of biology (SVT) Teacher, Mr Marc Roux.

The initiative is to educate our community about the importance of ecology. Rochambio is dedicated to raising awareness on environmental issues, such as preservation of biodiversity and waste management.

Go to rochambeau.org/rochambio to learn more about their projects.



BALDUCCI'S

Chef Prepared Catering




Balducci's is committed to bringing our customers the very best in gourmet finds, international delights, and unique flavors with high quality ingredients. Our chef prepared foods are the best in class and used to deliver delicious and wholesome menus for any occasion.

Balducci's is proud to partner with Rochambeau on their school lunch program. For more information, please use the QR code below.

BALDUCCIS.COM
CATERING@BALDUCCIS.COM
866.278.8866



SCAN FOR SCHOOL
LUNCH INFORMATION



Free dessert with any entree purchase with this flyer

ENJOY THE TASTE OF PARIS

LAPER AUX
The Journeymanchef's *French Bistro*

NAMED BEST RESTAURANT IN GERMANTOWN
18056 MATENY RD
GERMANTOWN, MD 20874
CALL 240-912-3100 FOR RESERVATIONS OR
WWW.LAPER A UX.COM

We are a proud sponsor of the Rochambeau School



Future is Bright

We are proud to support the

Rochambeau Gala

■ ■ ■ ■ ■

BLS

BELFINT • LYONS • SHUMAN
Certified Public Accountants

302.225.0600 » info@belfint.com

NEW!



En Route CaribEducation

Cultural and language immersion travels

En Route aims to make educational connections between the French Caribbean and the United States.

Our carefully curated programs combine language learning, cultural immersion, and thrilling adventures in *Guadeloupe* and *Martinique*.

We offer year around *school trips, students exchange, and summer camps in French*. Join us on this unique educational adventure and discover the beauty of the *French Caribbean*.

Contact:
office@enroute-education.org
Website:
www.enroute-education.org




FRIENDSHIP
HOSPITAL FOR ANIMALS

Comprehensive wellness, emergency and specialty care

- **Night and weekend appointments available**
- **More than 15 specialties and services**
- **Over 60 veterinarians under one roof**
- **Walk in 24/7 for urgent care**

202.363.7300 +24 hours

Located in Tenleytown with parking:
4105 Brandywine Street, NW
Washington, DC 20016
www.friendshiphospital.com



Brown & Brown Overview

As an independent insurance intermediary, Brown & Brown specializes in domestic and international:

- Employee Benefits
- Property & Casualty
- Risk Management Consulting
 - Personal Lines
 - National Programs
- Wholesale Brokerage
 - Services Division

For More Information, please contact
 Steve Butterworth, MBA
 EVP & Mid-Atlantic EB Practice Leader
 Brown & Brown Mid-Atlantic
 410.794.3887

Annual Report

Website



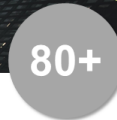
Top 1% of insurance brokerage firms in the U.S. as ranked by Business Insurance



Revenues are greater than \$3.6B and premiums placed exceed \$35B



Employs more than 15,000 teammates in 500+ locations



Providing superior service to our customers for more than 80 years



EMPLOYEE BENEFITS

Our Experience Spans All Industries + All Market Segment Solutions



TRANSFORMING CHALLENGES INTO GROWTH & SUCCESS

Unlock your full potential today!

Use code ROCH24 to book a FREE individual or parenting coaching sample session at thechallengecoach.com



COACHING | CONSULTING | TRAINING | SPEAKING



Mother Nature Perfects It, WE PROTECT IT.

PLANT HEALTH CARE SERVICES:

Nutrient Treatments • Soil Health Care
 Plant Growth Regulators • Root Excavation/Pruning
 Insect & Disease Treatments

GENERAL TREE CARE SERVICES:

24-Hour Emergency Service
 Complete Tree Removal • Tree & Shrub Pruning
 Hazardous Tree Assessment • Stump Grinding

240-558-0222

MonsterTreeService.com/MoCo

COMPASS



UN GRAND BIENVENUE À NOTRE NOUVEL AGENT, LÉO!

Joignez-vous à moi pour accueillir Léo Poulmarc'h
Groupe David Crossland avec Compass.

La spécialisation de Léo en droit des affaires, combinée à sa passion pour l'architecture et le design, font de lui un candidat idéal pour ce secteur. Né à Pau, l'une des plus belles villes françaises au pied des Pyrénées, Léo incarne le meilleur de sa région. Il a vécu à Paris pendant dix ans avant de déménager à Washington, DC en 2020, et considère la capitale nationale comme sa nouvelle maison. Pensez à Léo si vous ou un proche avez des besoins en immobilier. Contacter Léo: leo.poulmarch@compass.com



DAVID CROSSLAND

Realtor®

M: 202.320.5046

O: 301.298.1001

david.crossland@compass.com



DAVID
CROSSLAND
GROUP
OF COMPASS

We're honored to support the 2024 Rochambeau Gala.

Caring for the community starts with providing support for the people who live in it. So we're proud to work with Rochambeau, the French International School. Together, we can inspire and build better lives and communities.



[Truist.com](https://www.truist.com)

Truist Bank, Member FDIC. © 2023 Truist Financial Corporation. Truist, the Truist logo and Truist Purple are service marks of Truist Financial Corporation.



**Scan to Donate
to Rochambeau
Excellence Fund**



ROCHAMBEAU
THE FRENCH INTERNATIONAL SCHOOL