



POCATELLO/CHUBBUCK SCHOOL DISTRICT 25
LEARNING TODAY FOR THE POSSIBILITIES OF TOMORROW

**Administration Offices
3115 Pole Line Road
Pocatello, Idaho 83201**

Addendum No. 1

April 2, 2024

RE: 2024 HVAC Revisions at Irving Middle School

FROM: Business Services
(208) 235-3270

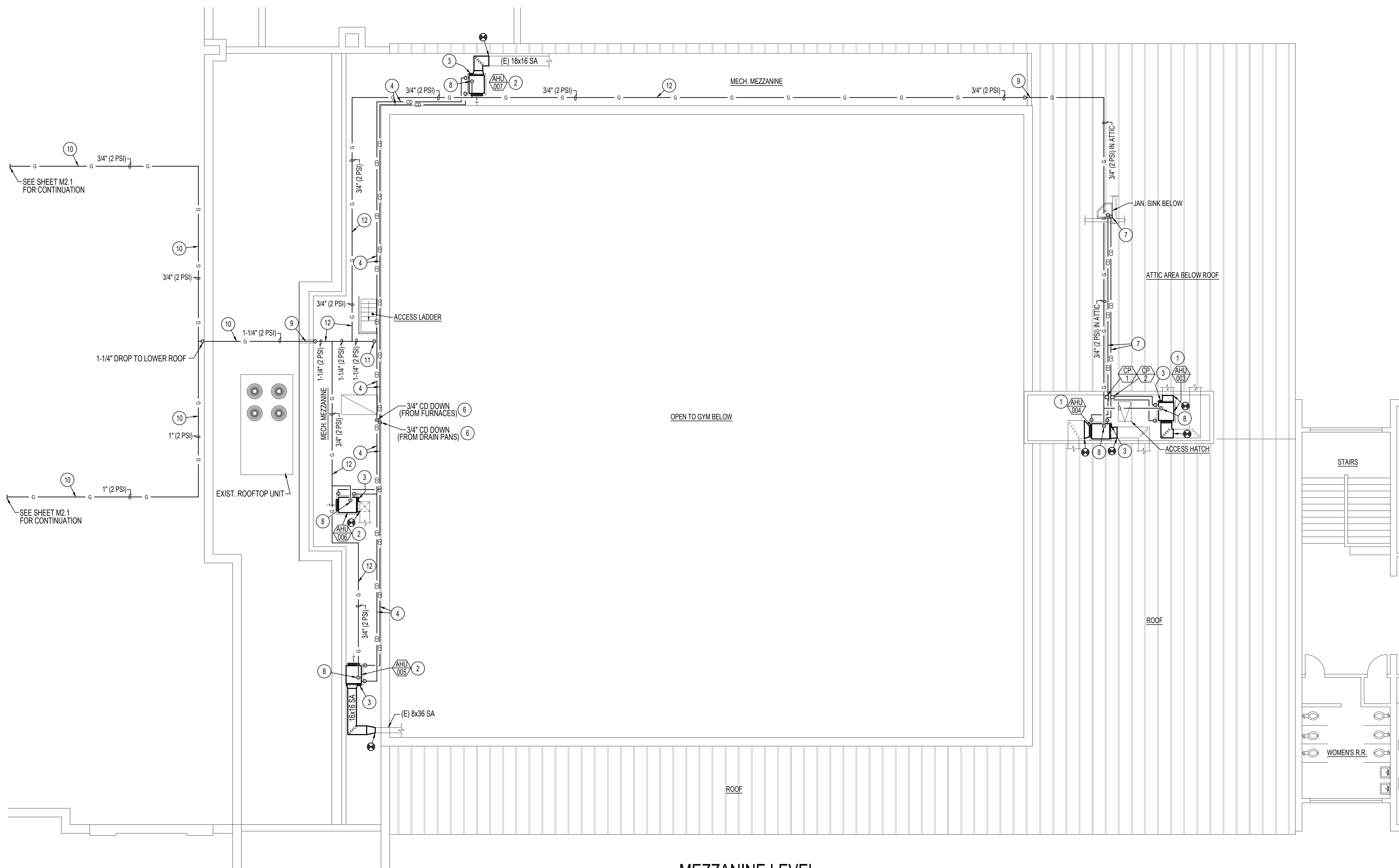
This Addendum becomes a part of the Contract Documents and modifies the original Bidding Specifications, as noted below. This addendum consists of one (1) page plus attachments. Total two (2) pages. Acknowledge Addendum on the original Bid Proposal. **Failure to acknowledge Addendum(s) on the bid proposal sheet may subject the bidder to disqualification.**

M2.2 CORRECTION TO SPECIFICATION / DRAWINGS

1. Inclusion of Drawing that was missing from the original specification, Mezzanine Level, Mechanical Floor Plan.

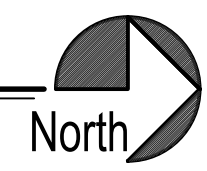
NO OTHER CHANGES

END OF ADDENDUM No.1 – April 2, 2024, js



**MEZZANINE LEVEL
MECHANICAL FLOOR PLAN**

SCALE: 1/8" = 1'-0"



PLAN NOTES:

- 1 INSTALL NEW GAS FIRED FURNACE AIR HANDLING UNIT ON ANGLE IRON STAND AND RECONNECT TO EXISTING SUPPLY AND RETURN AIR DUCTWORK & CONTROLS. FURNACE TO BE COMPLETE WITH DRAIN PAN UNDER UNIT AND 3/4" CONDENSATE DRAIN PIPING FROM BOTH DRAIN PAN AND FURNACE. CONTRACTOR TO PROVIDE AND INSTALL ANY DUCTWORK TRANSITIONS AND FLEXIBLE CONNECTIONS AS REQUIRED.
- 2 INSTALL NEW GAS FIRED FURNACE AIR HANDLING UNIT ON ANGLE IRON STAND AND RECONNECT TO EXISTING SUPPLY AIR DUCTWORK & CONTROLS. LEAVE RETURN AIR ON FURNACE OPEN TO MEZZANINE RETURN AIR PLENUM. FURNACE TO BE COMPLETE WITH DRAIN PAN UNDER UNIT AND 3/4" CONDENSATE DRAIN PIPING FROM BOTH DRAIN PAN AND FURNACE. CONTRACTOR TO PROVIDE AND INSTALL ANY DUCTWORK TRANSITIONS AND FLEXIBLE CONNECTIONS AS REQUIRED.
- 3 INSTALL NEW FURNACE FLUES UP THRU EXISTING ROOF TO VERTICAL VENT TERMINATION ASSEMBLY. SEAL ROOF PENETRATION WEATHERTIGHT. SIZE OF FLUES AND TERMINATION KIT TO BE DETERMINED BY MANUFACTURER INSTRUCTIONS.
- 4 RUN CONDENSATE DRAIN PIPING FROM FURNACE AND DRAIN PAN ON WALL NEAR FLOOR LEVEL OF MEZZANINE AS SHOWN. GRADE PIPING AS REQUIRED TO DRAIN TO JANITOR SINK BELOW ON MAIN LEVEL.
- 6 DROP 3/4" CONDENSATE DRAIN AND 3/4" CONDENSATE DRAIN FROM DRAIN PAN DOWN THRU MEZZANINE FLOOR AND RUN EXPOSED ON CEILING TO JANITOR SINK LOCATION. DROP DOWN AND TERMINATE IN JANITOR SINK WITH AIR GAP.
- 7 RUN 3/4" PUMPED CONDENSATE DRAIN LINES FROM CONDENSATE PUMPS CP-1 AND CP-2 ACROSS ABOVE CEILING OF LOCKER ROOMS AND DROP THRU CEILING OF JANITOR CLOSET BELOW. RUN PIPING ON WALL EXPOSED AND TERMINATE BOTH PUMPED CONDENSATE LINES IN JANITOR SINK COMPLETE WITH AIR GAP.
- 8 DROP 3/4" (2 PSI) GAS LINE DOWN TO SERVE NEW GAS FURNACE. INSTALL 2 PSI TO 0.5 PSI GAS PRESSURE REGULATOR IN 3/4" GAS LINE SIZED FOR ACTUAL BTU LOAD OF FURNACE SUPPLIED. VENT REGULATOR TO THE EXTERIOR. CONNECT 3/4" (0.5 PSI) GAS LINE TO FURNACE COMPLETE WITH SHUT-OFF VALVE, DIRT LEG AND FLEXIBLE CONNECTION. SEE DETAIL ON SHEET M3.1.
- 9 RUN NEW GAS PIPING THRU WALL AS SHOWN. SEAL WALL PENETRATION WEATHERTIGHT.
- 10 ALL GAS PIPING ON ROOF TO BE SUPPORTED AT 10'-0" ON CENTER USING PIPE SUPPORTS SIMILAR TO ERICO PIPE PIERS OR APPROVED EQUAL.
- 11 DROP NEW 1-1/4" (2 PSI) GAS LINE DOWN THRU EXISTING OPENING IN MEZZANINE FLOOR DOWN THRU FLOOR BELOW INTO EXISTING TUNNEL. SEE SHEET M2.1 FOR CONTINUATION OF GAS PIPING BELOW.
- 12 HANG NEW GAS PIPING FROM ROOF STRUCTURE NEAR CEILING OF MEZZANINE.



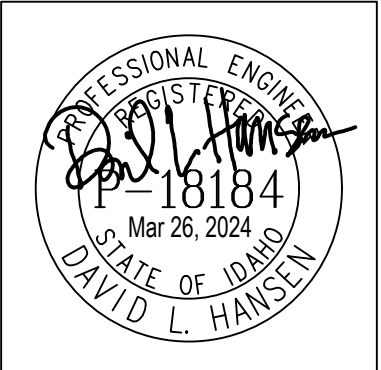
**Engineered Systems Associates
Mechanical Engineers**

Dave Hansen P.E., Tanner Davis P.E.
1355 East Center - Pocatello, Idaho 83201
Phone: (208) 233-0501 email: esa@engsystems.com

**ENGINEERING SERVICE FOR
IRVING MS HVAC REPLACEMENT**
911 N GRANT AVE, POCATELLO, ID 83204

MECHANICAL FLOOR PLANS

PROJECT:
SHEET TITLE:



DRWN. BY: SR	CKD. BY: DH
JOB NO. 23197	DATE: MARCH 2024

SHEET:
M2.2
OF: