



PASADENA
Unified School District

Comprendiendo las evaluaciones de dominio del idioma inglés para California (*ELPAC*)

Departamento de Desarrollo y Evaluación del Lenguaje

Juan Ruelas, Director

Rene Saldivar, Coordinador

25 de enero del 2021



PASADENA
Unified School District

Understanding the English Language Proficiency Assessments for California (ELPAC)

Language Assessment Development Department

Juan Ruelas, Director
Rene Saldivar, Coordinator

January 25, 2021

¿Qué es ELPAC?

EI ELPAC es un examen que:

- Mide qué tan bien los estudiantes entienden inglés cuando no es su idioma principal;
- Proporciona información que ayuda al maestro de su hijo a apoyarlo en las áreas correctas;
- Proporciona información a los padres sobre el progreso de sus hijos en el aprendizaje en inglés.

What is the ELPAC?

The ELPAC is a test that:

- Measures how well students understand English when it is not their primary language;
- Provides information that helps your child's teacher support him or her in the right areas;
- Provides information to parents about their child's progress in learning in English.

Qué prueba el ELPAC?

El ELPAC prueba cuatro áreas de dominio diferentes:



Listening



Speaking



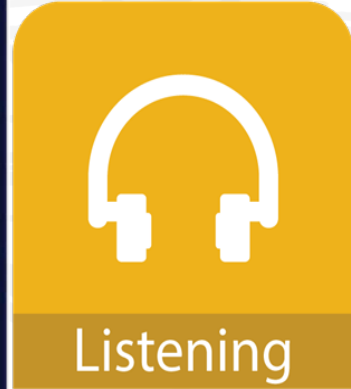
Reading



Writing

What Does the ELPAC Test?

The ELPAC tests four different domain areas:



¿Por qué los estudiantes toman el *ELPAC*?

- **Sí se identifica un idioma que no sea inglés, California requiere que los estudiantes tomen el *ELPAC*.**
- **La identificación de los estudiantes que necesitan ayuda para aprender inglés es importante para que los estudiantes de inglés puedan obtener el apoyo que necesitan para desempeñarse bien en la escuela.**

Why Do Students Take the ELPAC?

- If a language other than English is identified, California requires students to take the ELPAC.
- Identifying students who need help learning in English is important so English learners can get the support they need to do well in school.

El ELPAC tiene dos evaluaciones

Evaluación
Inicial

Evaluación
Sumativa

The ELPAC Has Two Assessments

Initial
Assessment

Summative
Assessment

El ELPAC inicial:

- **Quien necesita tomarlo:** Los estudiantes que son nuevos en las escuelas de California y que están identificados como hablantes de un idioma distinto al inglés reciben la evaluación inicial dentro de los 30 días posteriores a la inscripción en una escuela de California.
- Los estudiantes solo toman la evaluación inicial una vez.
- **Por qué:** La evaluación inicial se utiliza para identificar a los estudiantes como estudiantes de inglés que necesitan apoyo para aprender inglés o que dominan el inglés.

The Initial ELPAC:

- **Who:** Students who are new to California schools and who are identified as speaking a language other than English are given the Initial Assessment within 30 days of when they enroll in a California school.
- Students only take the Initial Assessment once.
- **Why:** The Initial Assessment is used to identify students as either an English learner who needs support to learn in English, or as proficient in English.

El ELPAC sumativo:

- **Quien toma este examen:** Los estudiantes que están aprendiendo inglés reciben la Evaluación sumativa cada primavera entre el 1 de febrero y el 31 de mayo hasta que se reclasifican como competentes en inglés.
- **Por qué:** La evaluación sumativa se utiliza para medir el progreso que los estudiantes de inglés están haciendo en escuchar, hablar, leer y escribir en inglés. Los resultados ayudan a decirle a la escuela si el alumno está listo para ser reclasificado como competente en inglés o si necesita más apoyo para aprender inglés.

The Summative ELPAC:

- **Who:** Students who are English learners are given the Summative Assessment each spring between February 1 and May 31 until they are reclassified as English proficient.
- **Why:** The Summative Assessment is used to measure the progress English learner students are making in listening, speaking, reading, and writing in English. The results help tell the school if the student is ready to be reclassified as proficient in English or if they need more support in learning in English.

¿Qué información obtendré sobre el resultado del *ELPAC* que mi hijo tomó?

Todos los estudiantes que toman el ELPAC recibirán un *Informe de puntaje del estudiante*.

El informe mostrará los resultados de la prueba en cada uno de los 4 dominios y le dará una calificación general en una escala de 1 a 4.

What Information Will I Get About How My Child Did on the ELPAC?

- All students who take the ELPAC will receive a *Student Score Report*.
- The report will show how your child did in each of the 4 domains and will give them an overall score on a 1 to 4 scale.

¿Qué información obtendré sobre el resultado del *ELPAC* sumativo?

- **Un puntaje general y nivel;**
- **Un puntaje y nivel de lenguaje oral;**
- **Un puntaje y nivel de lenguaje escrito;**
- **Y un nivel en cada uno de los 4 dominios;**

What Information Will I Get About How My Child Did on the Summative ELPAC?

- **An Overall Score and Level**
- **An Oral Language Score and Level;**
- **A Written Language Score and Level;**
- **And a level at each of the 4**

Domains;

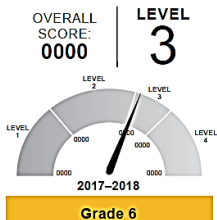
Reporte de puntaje del estudiante de ELPAC



STUDENT SCORE REPORT | 2017-2018
Anita C. Rocco
SUMMATIVE ASSESSMENT | GRADE 6

(SAMPLE REPORT FOR STUDENT'S FIRST-YEAR SCORES)
Anita's Grade 6 Results on the
English Language Proficiency Assessments for California

Anita's overall score of 0000 is in Level 3.
Students at this level have moderately developed English skills.



This was Anita's first time taking the ELPAC. If Anita takes the test again next year, this area will show the score history.

Oral Language Score

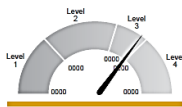


0000 | Level 2

The Oral Language Score is a combination of Anita's Listening and Speaking performance, shown below.

	Beginning	Somewhat/Moderately	Well Developed
Listening		✓	
Speaking	✓		

Written Language Score



0000 | Level 3

The Written Language Score is a combination of Anita's Reading and Writing performance, shown below.

	Beginning	Somewhat/Moderately	Well Developed
Reading		✓	
Writing			✓

For more information about this assessment, visit the California Department of Education ELPAC Web site at <https://www.cde.ca.gov/ta/tap/elpac/>. If you have questions about your child's ELPAC results, please contact your school for more information.

A Parent's Guide to Anita's English Language Proficiency Assessments for California (ELPAC) Score Report

CALIFORNIA DEPARTMENT OF EDUCATION (CDE)

STUDENT #: 9999999999 DATE OF BIRTH: 12/26/2007
GRADE: 6 TEST DATE: Month Day, 2018

Dear Parent/Guardian of Anita Rocco:

This report shows Anita's results on the English Language Proficiency Assessments for California (ELPAC), the newly developed state test of English language proficiency. The ELPAC provides information about your child's annual progress toward English language proficiency. Because the ELPAC measures new English language development standards, your child's ELPAC results should not be compared to prior test results from the California English Language Development Test (CELDT).

Below is information to help you understand the ELPAC, as well as ideas to support your child's continued English language development.

FOR THE PARENT/GUARDIAN OF:
ANITA C. ROCCO
1234 MAIN STREET
YOUR CITY, CA 12345

SCHOOL: California Unified Charter
LEA: California Unified
CDS: 9999991999991-9999

Sincerely,

Tom Torlakson

Tom Torlakson
State Superintendent of Public Instruction



What Is the ELPAC?

The ELPAC Summative Assessment measures student progress toward meeting the California English Language Development Standards (ELD Standards), which describe the English language skills that students need to succeed in school.

The ELPAC Summative Assessment:

- Is given each spring to students who have been identified as English learners
- Includes questions about Listening, Speaking, Reading, and Writing

Your child's ELPAC results:

- Are one measure of English proficiency that should be viewed with other available information, such as classroom tests, assignments, and grades
- Can be used to help talk to your child's teacher about your child's progress in English language development
- Can be used to determine if a student is ready to be reclassified as fluent English proficient (RFEP)

ELPAC Levels	What Students Can Typically Do at Each Level
LEVEL 4 	Students at this level have well developed English skills. <ul style="list-style-type: none"> They can usually use English to learn new things in school and to interact in social situations. They may occasionally need help using English.
LEVEL 3 	Students at this level have moderately developed English skills. <ul style="list-style-type: none"> They can sometimes use English to learn new things in school and to interact in social situations. They may need help using English to communicate on less-familiar school topics and in less-familiar social situations.
LEVEL 2 	Students at this level have somewhat developed English skills. <ul style="list-style-type: none"> They usually need help using English to learn new things at school and to interact in social situations. They can often use English for simple communication.
LEVEL 1 	Students at this level are at a beginning stage of developing English skills. <ul style="list-style-type: none"> They usually need substantial help using English to learn new things at school and to interact in social situations. They may know some English words and phrases.

The four ELPAC levels shown above describe what students at each level on the ELPAC can typically do in English. The table below shows how these four ELPAC levels relate to the three proficiency levels described in the ELD Standards.

ELPAC Levels	Level 1	Level 2	Level 3	Level 4
ELD Standard Proficiency Level	Emerging — requires substantial linguistic support	Expanding — requires moderate linguistic support	Bridging — requires light linguistic support	

How can I help my child?

- Read to your child, or have your child read to you, on a regular basis.
- Use pictures and ask your child to tell you what he or she sees in the picture or what is happening in the picture.
- Provide your child with opportunities to use language outside of school.
- Talk to your child's teacher about your child's Listening, Speaking, Reading, and Writing skills to help support your child's progress.

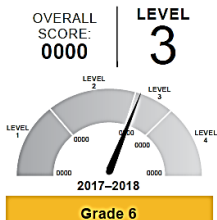
ELPAC Student Score Report (SSR)



STUDENT SCORE REPORT | 2017-2018
Anita C. Rocco
SUMMATIVE ASSESSMENT | GRADE 6

(SAMPLE REPORT FOR STUDENT'S FIRST-YEAR SCORES)
Anita's Grade 6 Results on the
English Language Proficiency Assessments for California

Anita's overall score of 0000 is in Level 3.
Students at this level have moderately developed English skills.



This was Anita's first time taking the ELPAC.
If Anita takes the test again next year, this area
will show the score history.

Oral Language Score



The Oral Language Score is a combination of Anita's Listening and Speaking performance, shown below.

	Beginning	Somewhat/Moderately	Well Developed
Listening		✓	
Speaking	✓		

Written Language Score



The Written Language Score is a combination of Anita's Reading and Writing performance, shown below.

	Beginning	Somewhat/Moderately	Well Developed
Reading		✓	
Writing			✓

For more information about this assessment, visit the California Department of Education ELPAC Web site at <https://www.cde.ca.gov/ta/tap/elpac/>.
If you have questions about your child's ELPAC results, please contact your school for more information.

A Parent's Guide to Anita's English Language Proficiency Assessments for California (ELPAC) Score Report

CALIFORNIA DEPARTMENT OF EDUCATION (CDE)

STUDENT #: 9999999999 DATE OF BIRTH: 12/26/2007
GRADE: 6 TEST DATE: Month Day, 2018

Dear Parent/Guardian of Anita Rocco:

This report shows Anita's results on the English Language Proficiency Assessments for California (ELPAC), the newly developed state test of English language proficiency. The ELPAC provides information about your child's annual progress toward English language proficiency. Because the ELPAC measures new English language development standards, your child's ELPAC results should not be compared to prior test results from the California English Language Development Test (CELDT).

Below is information to help you understand the ELPAC, as well as ideas to support your child's continued English language development.

FOR THE PARENT/GUARDIAN OF:
ANITA C. ROCCO
1234 MAIN STREET
YOUR CITY, CA 12345

SCHOOL: California Unified Charter
LEA: California Unified
CDS: 9999991999991-9999

Sincerely,

Tom Torlakson

Tom Torlakson
State Superintendent of Public Instruction



What Is the ELPAC?

The ELPAC Summative Assessment measures student progress toward meeting the California English Language Development Standards (ELD Standards), which describe the English language skills that students need to succeed in school.

The ELPAC Summative Assessment:

- Is given each spring to students who have been identified as English learners
- Includes questions about Listening, Speaking, Reading, and Writing

Your child's ELPAC results:

- Are one measure of English proficiency that should be viewed with other available information, such as classroom tests, assignments, and grades
- Can be used to help talk to your child's teacher about your child's progress in English language development
- Can be used to determine if a student is ready to be reclassified as fluent English proficient (RFEP)

ELPAC Levels	What Students Can Typically Do at Each Level
LEVEL 4 	Students at this level have well developed English skills. <ul style="list-style-type: none"> They can usually use English to learn new things in school and to interact in social situations. They may occasionally need help using English.
LEVEL 3 	Students at this level have moderately developed English skills. <ul style="list-style-type: none"> They can sometimes use English to learn new things in school and to interact in social situations. They may need help using English to communicate on less-familiar school topics and in less-familiar social situations.
LEVEL 2 	Students at this level have somewhat developed English skills. <ul style="list-style-type: none"> They usually need help using English to learn new things at school and to interact in social situations. They can often use English for simple communication.
LEVEL 1 	Students at this level are at a beginning stage of developing English skills. <ul style="list-style-type: none"> They usually need substantial help using English to learn new things at school and to interact in social situations. They may know some English words and phrases.

The four ELPAC levels shown above describe what students at each level on the ELPAC can typically do in English. The table below shows how these four ELPAC levels relate to the three proficiency levels described in the ELD Standards.

ELPAC Levels	Level 1	Level 2	Level 3	Level 4
ELD Standards Proficiency Level	Emerging — requires substantial linguistic support	Expanding — requires moderate linguistic support	Bridging — requires light linguistic support	

How can I help my child?

- Read to your child, or have your child read to you, on a regular basis.
- Use pictures and ask your child to tell you what he or she sees in the picture or what is happening in the picture.
- Provide your child with opportunities to use language outside of school.
- Talk to your child's teacher about your child's Listening, Speaking, Reading, and Writing skills to help support your child's progress.

Responsabilidad de la escuela: Apoyar a su hijo para que tengan éxito

- **El maestro de su hijo es el mejor recurso para comenzar si tiene alguna pregunta.**
- **Las escuelas le informarán sobre los programas que existen para ayudar a los estudiantes que están aprendiendo inglés.**

The School's Role:

Supporting Your Child's Success

- **Your child's teacher is the best place to start if you have any questions.**
- **Schools will inform you of the programs that are in place to help support English learner students.**

¿Cómo puede ayudar y apoyar el éxito de su hijo?

Pregúntele al maestro de su hijo:

- ¿En qué áreas está bien mi hijo?
- ¿En qué áreas podría mi hijo necesitar algo de apoyo adicional?
- ¿Cómo puedo ayudar a mi hijo en casa?
- ¿Cómo estás apoyando a mi hijo en la escuela?

How You Can Help Support Your Child's Success

- **Ask your child's teacher:**
 - In what areas is my child doing well?
 - In what areas might my child need some extra support?
 - How can I help support my child at home?
 - How are you supporting my child at school?

¿Cómo puede ayudar? Apoyando el éxito de su hijo (cont.)

- Léale a su hijo, o pídale a su hijo que le lea de manera regular.
- Use imágenes y pídale a su hijo que le diga lo que ve en la imagen o lo que está sucediendo en la imagen.
- Proporcione a su hijo oportunidades para usar el lenguaje fuera de la escuela.
- Anime a su hijo para que haga su mejor esfuerzo, porque las pruebas son importantes.

How You Can Help Support Your Child's Success

(cont.)

- Read to your child, or have your child read to you, on a regular basis.
- Use pictures and ask your child to tell you what he or she sees in the picture or what is happening in the picture.
- Provide your child with opportunities to use language outside of school.
- Encourage your child to try their best because the tests are important.

¿Cómo puedo obtener más información sobre las pruebas que mi hijo está tomando?

- Repase la guía para padres sobre el entendimiento;
- Realice una prueba de práctica ELPAC con su hijo;

How Can I Learn More About the Tests My Child is Taking?

- Review the Parent Guide to Understanding the ELPAC;
- Take an ELPAC Practice Test with your child;

Actualizaciones de LADD:

Las pruebas de todos los EL en PUSD comenzarán el 1 de febrero;

- Todas las escuelas están recibiendo entrenamiento y pueden acceder a las listas de EL desde [TOMS, la interfaz en línea](#), y [una lista física y los formularios que proporciona LADD](#);
- Se brindarán apoyos a las escuelas con mayor porcentaje;
- LADD ha reemplazado al Técnico del Centro de Evaluación jubilado con un nuevo empleado;
- ITS ha notificado al LADD de la llegada de 300 puntos críticos para EL / RFEP; hemos creado un sistema de verificación que debe ser aprobado por ITS;

LADD Updates:

- **Testing of all EL's in PUSD will begin on February 1st;**
 - **All schools are being trained and can access EL lists from TOMS, the online interface, as well as a physical list and forms that LADD provides;**
 - **Supports will be provided to schools with higher %;**
 - **LADD has replaced the Assessment Center Technician position with a new hire;**
 - **ITS has notified LADD of 300 hotspots arriving for ELs/RFEPs; we've created a system of checking out that needs to be approved by ITS;**

Gracias/Thank you

Questions?/ ¿preguntas?

- **Para obtener más información, póngase en contacto o visite nuestra oficina/For more information please contact or visit our office:**
 - **Departamento de Desarrollo y Evaluación del Lenguaje, LADD, #209**
351 S. Hudson Ave, Pasadena, California 91103
(626) 396-3600, extensión 88299