

# EARLY LEARNING

## 2024-25 Preschool Catalog

AFTON | COTTAGE GROVE | DENMARK | GREY CLOUD ISLAND | NEWPORT | ST. PAUL PARK | WOODBURY



Registration Begins  
Jan. 8-Feb. 9, 2024

Preschool classes  
begin the week of  
Sept. 16, 2024



**SoWashCo**  
COMMUNITY EDUCATION

Opportunities for preschool-aged children and their families.  
***Where families play, learn and grow together.***

# EARLY LEARNING PROGRAMS AND SERVICES

SoWashCo Schools Early Childhood Education programs are offered through Community Education. Our early learning programs offer engaging and personalized experiences for our earliest learners from birth to age five.

## TABLE OF CONTENTS

<b>Early Learning Programs and Services</b>	2
<b>Preschool Options</b>	
3s Preschool (Little Suns)	3
Multitage Preschool 3s-4s (Solar Sparks)	4
4s Preschool (Sunny Scholars)	5
<b>Registration Information</b>	
Online Registration	6
Tuition and Financial Assistance	6
<b>Other Important Preschool Information</b>	
Staff Qualifications	5
Curriculum and Assessment	5
Age Eligibility for Preschool	7
Toilet Skills Expected for Preschool	7
Arrival and Departure Procedures, Expectations and Protocols	7
Transportation	7
<b>Preschool Information Nights and Preschool Tours</b>	
	8
<b>Important Dates</b>	8

## Contacts

### Enrollment Questions

**All Sites** .....651-425-7160 or 651-425-7181

### Early Learning Contact Information

**Community Education Director**  
Bob Lawrence ..... 651-425-6601

**Early Childhood Family Services Supervisor**  
Joyce Beaird ..... 651-425-7169

**Liberty Ridge Site II Coordinator**  
Beth Quist ..... 651-425-7163

**District Program Center Site Coordinator**  
Ann Mockenhaupt ..... 651-425-6636

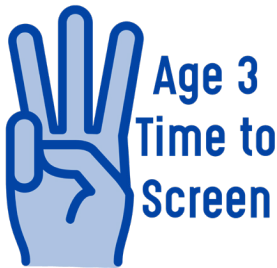
**Early Childhood Screening Appointments**  
..... [sowashco.org/screening](https://sowashco.org/screening)

### Early Childhood Family Education

Early Childhood Family Education (ECFE) is a family education program offered only through Minnesota school district Community Education programs like SoWashCo Community Education. ECFE’s goal is to support and enhance the ability of parents and other caregivers, through community and early school connection, to provide the best possible environment for their child’s learning and growth. For more information call 651-425-7181 or visit [sowashco.org/ecfe](https://sowashco.org/ecfe).

### Early Childhood Screening

Early Childhood Screening is required by the State of Minnesota for any child entering Kindergarten in a public school and in SoWashCo Schools required before enrollment in 4s Preschool (Sunny Scholars) program. Screening is recommended at age 3 and is a quick and simple check of how your child is growing and developing. If your child has not yet been screened and is between the ages of 3 and 4, please make an appointment at [sowashco.org/screening](https://sowashco.org/screening).



**Please note:** Early childhood developmental screening includes a vision screening that helps detect potential eye problems, but is not a substitute for a comprehensive eye exam.

### Early Childhood Special Education

Early Childhood Special Education (ECSE) provides programs and services for young children with disabilities from birth to age 5. Services are provided for children from birth to 2 years old in their home setting. Children aged 3 to 5 are provided with services in a preschool setting designed to meet their educational needs. A referral to early intervention services can be made through the ECSE Intake Coordinator for SoWashCo Schools at 651-425-1182. To learn more, visit [sowashco.org/ecse](https://sowashco.org/ecse).

To review developmental milestones, encourage healthy development, and learn about additional resources for your child, visit Help Me Grow at [www.helpmegrowmn.org](https://www.helpmegrowmn.org).



# PRESCHOOL IN SOWASHCO SCHOOLS



South Washington County Schools (SoWashCo Schools) Preschool program provides a high-quality preschool environment with a variety of options for families. Families can enroll at one of our Early Learning centralized locations or at an elementary site. Optional parent discussion groups are available with some classes at no additional charge with a child registration. The program provides classes for 3-year-olds, 4-year-olds and mixed age classes for 3 and 4-year-olds learning together.

## Preschool Site Locations

### Early Learning Centralized Sites:

**Liberty Ridge Site II (LR2)** -  
Early Learning Main Office  
11283 Eagle View Boulevard, Woodbury

**District Program Center (DPC)**  
8400 E. Point Douglas Road S,  
Cottage Grove

### Preschool Elementary Sites:

**Armstrong Elementary (AES)**  
8855 Inwood Avenue S, Cottage Grove

**Bailey Elementary (BES)**  
4125 Woodlane Drive, Woodbury

**Cottage Grove Elementary (CGES)**  
7447 65th Street, Cottage Grove

**Crestview Elementary (CES)**  
7830 80th Street, Cottage Grove

**Hillside Elementary (HES)**  
8177 Hillside Trails S, Cottage Grove

**Newport Elementary (NES)**  
851 6th Avenue, Newport

**Pullman Elementary (PES)**  
1260 Selby Avenue, St. Paul Park

**Royal Oaks Elementary (ROES)**  
7335 Steepleview Road, Woodbury

**Valley Crossing Elementary (VCES)**  
9900 Park Crossing, Woodbury

**Woodbury Elementary (WES)**  
1251 School Drive, Woodbury

## PRESCHOOL OPTIONS

### 3s Preschool (Little Suns)

For children turning 3 by Sept. 1, 2024. Child-only preschool class **with optional parent discussion group**. Learn more about the parent discussion groups on page 4.

AGE	DAYS	TIME	LOCATION	COST PER MONTH
3 by 9/1/24	M/W/F	9:15-11:45 a.m.	District Program Center	\$230
	<b>Optional Parent Discussion Group:</b> Wednesdays, 9:15-10:45 a.m., DPC			
3 by 9/1/24	T/TH	9:15-11:45 a.m.	District Program Center	\$195
	<b>Optional Parent Discussion Group:</b> Wednesdays, 9:15-10:45 a.m., DPC			
3 by 9/1/24	T/TH	1:15-3:45 p.m.	District Program Center	\$195
	<b>Optional Parent Discussion Group:</b> Wednesdays, 9:15-10:45 a.m., DPC			
3 by 9/1/24	T/TH	9:15-11:45 a.m.	Valley Crossing Elementary	\$195
	<b>Optional Parent Discussion Group:</b> Fridays, 9:15-10:45 a.m., VCES			



# PRESCHOOL OPTIONS



## Optional Parent Discussion Group

### 3s Preschool (Little Suns) and Multiage Preschool 3s-4s (Solar Sparks)

As part of the preschool registration some 3s Preschool (Little Suns) and Multiage Preschool 3s-4s (Solar Sparks) classes provide an opportunity to enroll in an optional preschool parent discussion group one day per week.

The parent discussion group is included in your child's registration fee, there is no additional charge. In this parent group, facilitated by a licensed ECFE parent educator, you will be able to meet other families and discuss a variety of topics related to parenting a 3 or 4-year-old.

There will be an option during the registration process to indicate that you would like to opt into the parent discussion group. Opting in will enroll you in the parent discussion group in addition to your preschool enrollment.

Registration for childcare is available for siblings who are 5 years old or younger. Childcare is also available for your preschooler if they do not attend preschool on the day of your parent discussion group.

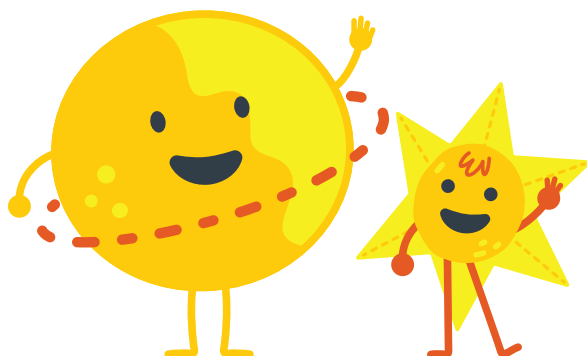
## Multiage Preschool 3s-4s (Solar Sparks)

For children turning 3 or 4 by Sept. 1, 2024. Child-only preschool class without a parent discussion option.

AGE	DAYS	TIME	LOCATION	COST PER MONTH
3 to 4 by 9/1/24	T/Th	1:15-3:45 p.m.	District Program Center	\$195
3 to 4 by 9/1/24	M/W/F	1:15-3:45 p.m.	District Program Center	\$230
3.5 to 4 by 9/1/24	M/W/F	1:15-3:45 p.m.	District Program Center	\$230
3.5 to 4 by 9/1/24	M/W/F	8:40-11:10 a.m.	Liberty Ridge Site II	\$230
3.5 to 4 by 9/1/24	T/TH	8:40-11:10 a.m.	Liberty Ridge Site II	\$195
3.5 to 4 by 9/1/24	M/W/F	8:40-11:10 a.m.	Hillside Elementary	\$230
3.5 to 4 by 9/1/24	T/TH	8:40-11:10 a.m.	Hillside Elementary	\$195
3.5 to 4 by 9/1/24	M/W/F	1:15-3:45 p.m.	Valley Crossing Elementary	\$230

For children turning 3 or 4 by Sept. 1, 2024. Child-only preschool class **with optional parent discussion group**.

AGE	DAYS	TIME	LOCATION	COST PER MONTH
3.5 to 4 by 9/1/24	M/W/F	9:15-11:45 a.m.	Valley Crossing Elementary	\$230
			<b>Optional Parent Discussion Group:</b> Fridays, 9:15-10:45 a.m., VCES	
3 to 4 by 9/1/24	M/W/F	9:15-11:45 a.m.	Valley Crossing Elementary	\$230
			<b>Optional Parent Discussion Group:</b> Fridays, 9:15-10:45 a.m., VCES	
3 to 4 by 9/1/24	M/W/F	9:15-11:45 a.m.	District Program Center	\$230
			<b>Optional Parent Discussion Group:</b> Wednesdays, 9:15-10:45 a.m., DPC	
3 to 4 by 9/1/24	T/TH	9:15-11:45 a.m.	Valley Crossing Elementary	\$195
			<b>Optional Parent Discussion Group:</b> Fridays, 9:15-10:45 a.m., DPC	



**Solar Sparks**  
3 and 4-year-olds  
learn and grow  
together

# PRESCHOOL OPTIONS

## 4s Preschool (Sunny Scholars)

For children turning 4 by Sept. 1, 2024. Child-only preschool class without a parent discussion option. **Please note:** Early Childhood Screening must be completed or an appointment made prior to enrollment.

AGE	DAYS	TIME	LOCATION	COST PER MONTH
4 by 9/1/24	M-F	8:40-11:10 a.m.	Armstrong Elementary	\$395
	M-F	12:40-3:10 p.m.		\$395
4 by 9/1/24	M-F	9:20-11:50 a.m.	Bailey Elementary	\$395
	M-F	1:20-3:50 p.m.		\$395
4 by 9/1/24	M-F	8:40-11:10 a.m.	Cottage Grove Elementary	\$395
	M-F	12:40-3:10 p.m.		\$395
4 by 9/1/24	M-F	7:55-10:25 a.m.	Crestview Elementary	\$395
	M-F	11:55 a.m.-2:25 p.m.		\$395
4 by 9/1/24	M-F	8:40-11:10 a.m.	Hillside Elementary	\$395
	M-F	12:40-3:10 p.m.		\$395
4 by 9/1/24	M-F	8:40-11:10 a.m.	Liberty Ridge Site II Early Learning Center	\$395
	M-F	9:20-11:50 a.m.		\$395
	M-F	12:40-3:10 p.m.		\$395
	M-F	1:20-3:50 p.m.		\$395
4 by 9/1/24	M-F	7:55-10:25 a.m.	Newport Elementary	\$395
	M-F	11:55 a.m.-2:25 p.m.		\$395
	*Transportation is provided for children living within the Newport Elementary school boundary and attending preschool at Newport Elementary.			
4 by 9/1/24	M-F	8:40-11:10 a.m.	Pullman Elementary	\$395
	M-F	12:40-3:10 p.m.		\$395
4 by 9/1/24	M-F	7:55-10:25 a.m.	Royal Oaks Elementary	\$395
	M-F	11:55 a.m.-2:25 p.m.		\$395
4 by 9/1/24	M-F	1:15-3:45 p.m.	Valley Crossing Elementary	\$395
4 by 9/1/24	M-F	8:40-11:10 a.m.	Woodbury Elementary	\$395
	M-F	12:40-3:10 p.m.		\$395



### Highly Qualified Staff

Preschool teachers in SoWashCo Schools possess specialized training in early childhood education and child development. Teachers hold a minimum of a 4-year college degree and are required to have State licensure for teaching preschool.

### Curriculum and Assessment

The curriculum and assessment utilized in the SoWashCo Schools Preschool program follows the Minnesota Department of Education guidelines and is required to align with Early Childhood State Standards or the Early Childhood Indicators of Progress. Learn more about at [education.mn.gov/MDE](http://education.mn.gov/MDE)





# REGISTRATION INFORMATION



## Registration Fee

A registration fee of \$85 is required at the time of enrollment. If you pay your registration fee by credit card, your charge card will not be processed until your child is placed into a class. All checks will be processed upon receipt. The registration fee is a one-time charge and is non-refundable once your child has been placed in a class.

## Tuition

- Nine monthly payments will be due on the 1st of each month, beginning Sept. 1, 2024 through May 1, 2025.
- Payments received after the 5th of each month will be charged a \$25 late fee.
- If your financial situation changes, please contact our office immediately to make arrangements for payment. Our program is primarily supported by fees, which are relied upon for operating expenses. Any nonpayment that becomes delinquent will be required to be sent to our collections when an alternative financial plan is not completed with the Early Learning Office.
- A two-week notice is required when withdrawing your child from class. Failure to do so may result in additional charges. All outstanding balances must be paid in full.
- No refunds will be made when classes are canceled due to emergency school closings.

## Financial Assistance

Financial assistance is available for families that meet certain State eligibility requirements. Financial assistance can be applied for online when you are registering for preschool. Families may be required to provide proof of income. Those qualifying for assistance will also be required to complete a State Pathways Scholarship application. Limited district scholarships are available.

## Online Registration

Preschool registration will take place online at [sowashco.ce.eleyo.com](https://sowashco.ce.eleyo.com) beginning on Jan. 8 through Feb. 9, 2024. After that time an initial lottery for placement based on enrollment choice(s) will take place. Registrations that are fully completed will be placed in the initial placement lottery. After Feb. 9, registrations will be taken on a first-come, first-served basis.

If your family does not have access to a computer or you're in need assistance, the Early Learning office staff will be happy to assist you by phone. If you have questions or need support with your registration, please contact our Early Learning Office at 651-425-7160.

## Selecting Your Class and Required Documents

Upon making class selections, indicate your first choice by selecting your first choice class at the beginning of the registration process. There will be an opportunity during the registration process to indicate your second choice. You will also need to provide a birth certificate, immunization records and proof of screening. If you have questions related to documents necessary for enrollment, please call our Early Learning Office at 651-425-7160. **Please note:** If you are registering for 4s Preschool (Sunny Scholars), your child will not be placed in a class until Early Childhood Screening has been completed. If your child has not completed Early Childhood Screening, please schedule an appointment at [sowashco.org/screening](https://sowashco.org/screening).

## How to Register

1. Go to [sowashco.ce.eleyo.com](https://sowashco.ce.eleyo.com)
2. Click "Sign in" or "Create an Account"
3. Select "Explore All Programs"
4. Select "Preschool"
5. Click "Learn More"
6. Select your first choice of class based on your child's age, time, and location and click "Enroll Now"
7. Select "Attending Child" and follow prompts
8. Mail, fax or drop off a copy of your child's birth certificate and immunization records to:  
Attention: Preschool Enrollment  
Liberty Ridge Site II Early Learning Center  
11283 Eagle View Blvd., Woodbury, MN 55129  
651-425-2720 Fax
9. If your child has already turned 3, schedule an Early Childhood Screening at [sowashco.org/screening](https://sowashco.org/screening)  
(Required for "4s Preschool (Sunny Scholars)" classes)

## Class Confirmations

Processing of your registration fee will be confirmation of your child's placement and you will receive an auto email response no later than March 29, 2024. Most children will be placed in either a first or second choice during the initial enrollment period.

# OTHER IMPORTANT PRESCHOOL INFORMATION



## Age Eligibility for the Preschool Program in SoWashCo Schools

In addition to parent fees, our preschool program is provided State funding for the purpose of providing service to age-eligible 3 and 4-year-olds. Age eligible means children who turn 3 or 4 years of age by Sept. 1. Because of this requirement and our current capacity, we are prioritizing our available seats for children who meet this age eligibility requirement.

Please note that in the 2024-25 program year, the South Washington County Preschool Program will no longer provide programming for children who are age five or older by Sept. 1 of the enrollment year. This is to ensure we are providing access as intended for children who are 3 and 4 years of age.

## Toilet Skills

Children attending preschool should be mostly bathroom independent, knowing when they need to use the bathroom, and are having few accidents. \*Special circumstances are accommodated due to medical needs.

## Transportation

Preschool is an optional program; therefore the district is not required to provide transportation for preschool programs.

Should your child qualify for transportation based on State funding requirements, it is important to know that preschool transportation is not always an "Early Childhood only route", students may be transported with older, non-preschool-aged students.

Students receive "home to school" pick-up and drop-off. An adult must make eye contact with the driver for both pick-up and drop-off.

## Hand to Hand Expectation

Parents, or another designated adult, must escort students to and from the designated location where staff will greet children each day. Preschool children will only be released to designated individuals.

## Late Pick-Up Procedure and Fees

Please arrive 5 minutes prior to the end of class to ensure prompt pick up of your child and to avoid late pick up fees.

Beginning in the fall of 2023, the Early Learning program has instituted a zero-tolerance protocol for late pick up of children in our preschool program. This change is due to a significant increase in late pick-ups over the last several years.

To meet contractual obligations of staff and to ensure prompt pick up, we will now assess a \$15 late fee (per each 15 minutes, or any portion thereof) for children picked up after the stated class ending time. This charge will be included on the following billing statement. Financial assistance will not be provided for late pick up fees. If you are receiving financial assistance, you will be responsible for any late fees that occur.

We understand that there could be an emergency or special circumstance that may arise that could cause a late pick up. In the event of an unavoidable situation that has arisen, and you must be late, please notify your teacher prior to school ending or as soon as possible (a late charge will still apply).

If a parent or authorized person does not arrive or call within 5 minutes of class ending, staff will begin to call emergency contacts for your child. If no emergency contact can be reached within 30 minutes of class ending, our staff may be directed to contact Washington County Dispatch who will send a police officer to the site. It is essential for our teachers and our Early Learning Office (651-425-7160) to have updated contact information.

Each late pickup will include a late charge as well as a parent notification recording the occurrence. Termination of your preschool program contract may result if there are 5 late pick-up occurrences. A fee will be assessed for each occurrence based on the time noted on the notification. Late pick up will be considered anything after one minute after class has ended. Fees will be applied within 15-minute increments, \$15 every 15 minutes.



**South Washington County Schools**  
District Program Center  
8400 E. Point Douglas Rd. S.  
Cottage Grove, MN 55016

## Stay Connected



@SoWashCoCE



Scan the QR code to  
learn more or visit  
[sowashco.org/preschool](https://sowashco.org/preschool)

# Register Online at [sowashco.ce.eleyo.com](https://sowashco.ce.eleyo.com)

## Important Dates

**Preschool Registration begins: Jan. 8, 2024**

2024–25 Preschool classes begin the week of  
Sept. 16, 2024

### No Class Dates

Sept. 30 .....Teacher Workday, no school  
Oct. 16 .....Teacher Workday, no school  
Oct. 17–18 .....MEA, no school  
Nov. 5 ..... Election day, no school  
Nov. 27 .....Teacher Workday, no school  
Nov. 28–29 ..... Holiday, no school  
Dec. 23–Jan. 1 .....Winter Break, no school  
Jan. 2–3 .....Teacher Workday, no school  
Jan. 20 .....Teacher Workday, no school  
Feb. 14 .....Teacher Workday, no school  
Feb. 17 ..... Presidents' Day, no school  
March 10–14 .....Spring Break, no school  
March 17 .....Teacher Workday, no school  
April 18 ..... Employee Holiday, no school  
April 21 .....Teacher Workday, no school  
May 23 .....Teacher Workday, no school  
May 26 ..... Memorial Day Holiday, no school  
June 4 ..... Last day of school

\*Dates are subject to change

## Preschool Information Nights and Preschool Tours

We invite you to learn more about our preschool program by attending an information night or tour. A short presentation will be made about our preschool programs and preschool representatives will be available to help answer questions and provide take home information.

**Pre-registration is required.** For more information or to register, please call 651-425-7160 or visit [sowashco.org/preschool](https://sowashco.org/preschool).

### Information Nights

#### District Program Center

6–7 p.m. on Monday, Jan. 22, 2024

#### Liberty Ridge Site II

6–7 p.m. on Thursday, Jan. 25, 2024



### Tours

#### District Program Center

11 a.m.–12 p.m. on the  
following Wednesdays:

- Feb. 14, 2024
- March 13, 2024
- April 10, 2024
- May 8, 2024

#### Liberty Ridge Site II

2:30–3:30 p.m. on the  
following Mondays:

- Feb. 26, 2024
- March 25, 2024
- April 15, 2024
- May 20, 2024

[sowashco.org/preschool](https://sowashco.org/preschool)