



Park Hill School District

Building Successful Futures • Each Student • Every Day

ADDENDUM No. 1

Park Hill School District

2024 Masonry Projects

March 27, 2024

You are instructed to read and note the following described changes, corrections, clarifications, omissions, deletions, additions, approvals and statements pertinent to the Construction Documents.

Addendum No. 1 is a part of the Contract Bid and Construction Documents and shall govern the performance of the Work.

I. General Information

- A. Attached are Google views of the buildings and outlined roof areas where roofing work will be taking place this summer.
- B. The brick replacement listed on separate lines in the Summary are included in the total brick count for each school.
 - 1. Park Hill High School 770 brick
 - 2. Plaza Middle Schools 50 brick
 - 3. Prairie Point Elem. School 100 brick
 - 4. Renner Elem. School 50 brick
 - 5. Union Chapel Elem. School 100 brick
- C. Do not remove any conduit attached to masonry walls unless needed to replace brick or repair movement cracks.

II. Clarifications

- A. Park Hill High School
 - 1. Remove and dispose of lightning rods and cables on chimney above Roof I, and extending vertically down the north elevation wall below Roof I.
 - 2. New metal cap for the chimney above Roof I shall include:
 - a. An exterior metal fascia that covers the existing concrete fascia and extends down onto the brick.
 - 3. Prior to installing the new metal wall panels at the east wall of courtyard/pit, north of Roof I;
 - a. Install a self-adhering air vapor control membrane to cover 100% of the wall.

- b. Include matching metal corner closures to properly terminate metal wall panels.
- 4. Remove obsolete light fixtures at the NE and NW corners of the north wall below Roof I.
 - a. Fill voids in brick with new brick and/or matching sealant.
- 5. Replace/install new, brick to wood sealant joint under wood fascia along top edge of north wall below Roof I.
- 6. Replace/install new, brick to soffit panel sealant joint on the walls below Roof P.
- 7. At the large courtyard, south elevation wall; remove two conduits at west end and fill voids with new brick and/or matching sealant.

B. Prairie Point Elementary School

- 1. Under the specification Summary section, item m., 3), j); states to replace the “Metal panel to metal panel joints below upper metal roofs”. These joints are where the blue vertical metal panels tie into the blue metal coping. Remove and replace these joints.
- 2. At Door #6 courtyard, install a cove joint at the cracked inside corner, extending from top to bottom.
- 3. At Door #11, include replacement of column to sidewalk joints.

C. Renner Elementary

- 1. There are two trash enclosure, only include the main enclosure closest to the school.
- 2. Clarification: The rectangular wall vents and associated PVC drain pipes extending through the north and south elevation walls below Roof D, ARE NOT included in this work. These vents and pipes will be removed and infilled by others during interior renovation this summer.
 - a) The wall vents and pipes on the north elevation wall below Roof B ARE included in this project and all sealant around these projections perimeters need to be remove and replaced.
- 3. Use Tremco’s Spectrum 800 for the asphalt to brick joints around the gym, Roof F.
- 4. Remove and dispose of lightning rods and cables on chimney above Roof B.
- 5. Install new 24-gauge pre-finished metal cap over the chimney above Roof B.
 - a. The exterior metal fascia shall cover the existing concrete fascia and extends down onto the brick.
 - b. Fascia shall be secured with a 22-gauge continuous cleat.
 - c. Add new wood as needed to provide proper attachment and slope to the new metal cap.
- 6. Under the specification Summary section, Delete item n., 3), f).

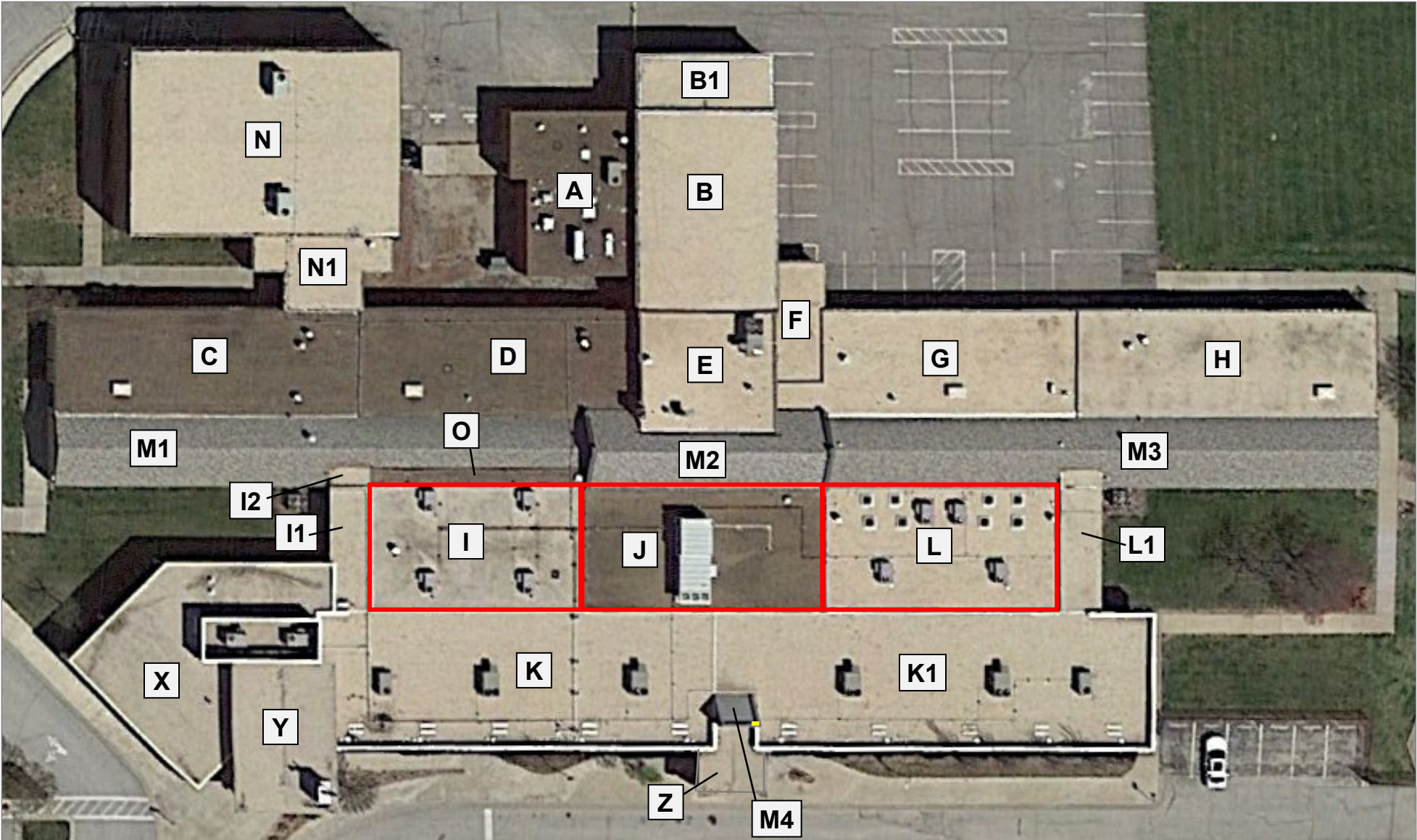
D. Union Chapel Elementary

- 1. At Door #5, do not include any brick to concrete caulking.

2. On west elevation, between Doors 2 & 3, remove old odd colored sealant and tuckpoint mortar joints.
3. At Door #2:
 - a. Remove paint on brick at west elevation.
 - b. Include replacing sealant at sidewalk to concrete footing joint.

ACKNOWLEDGEMENT: Each Bidder shall acknowledge receipt of Addendum No. 1 on the Bid Forms.

END OF ADDENDUM NO. 1



 Replace

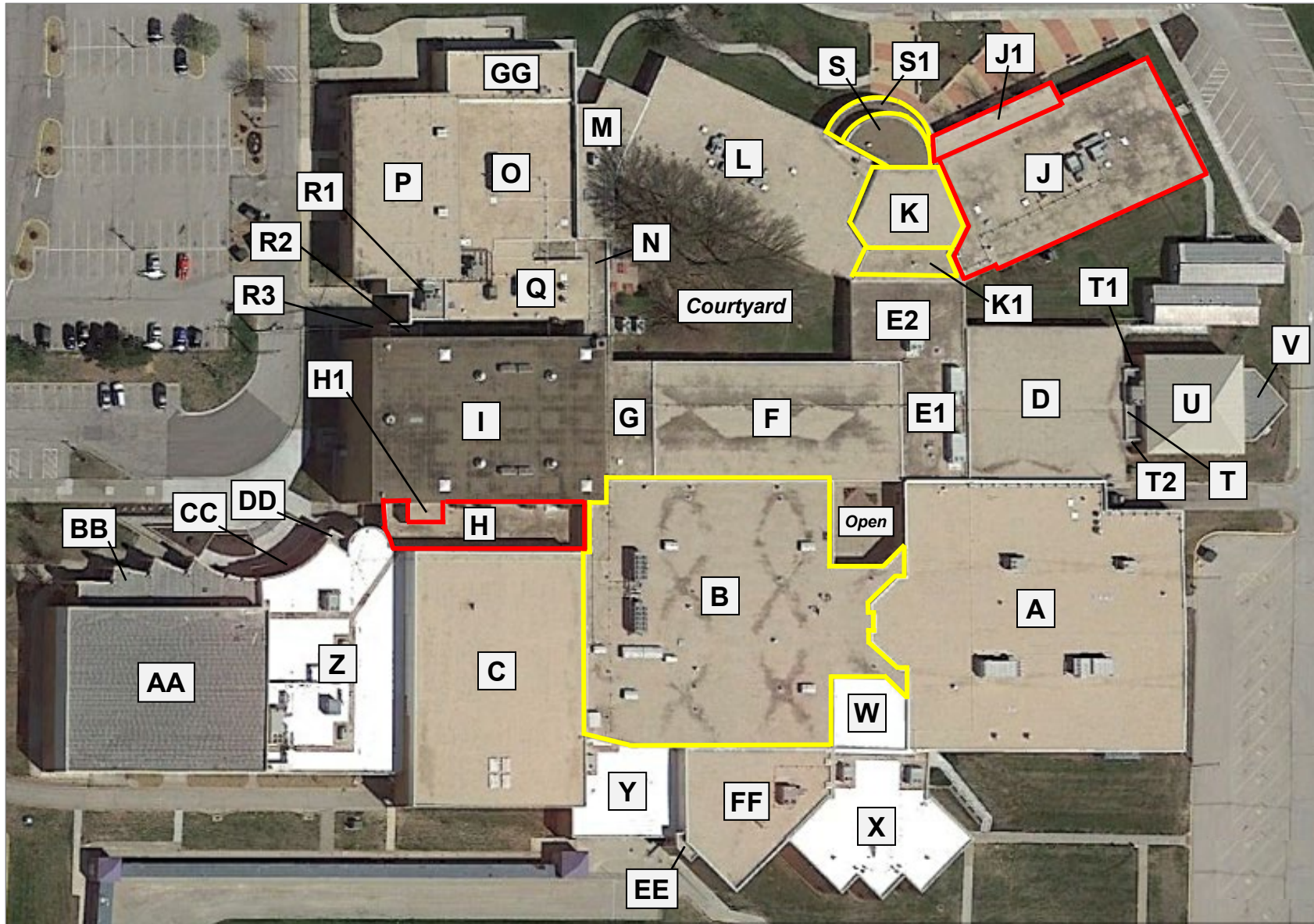


Park Hill High School

7701 NW Barry Road, Kansas City, MO 64153



Park Hill School District



Replace



Restore



Renner Elementary

7401 NW Barry Road, Kansas City, MO 64152



Park Hill School District



Elevator

A

C

B

D

G

F



Replace



Restore