

Legend for Areas of Construction –

A – 9th Grade B – Commons C – Admin D – Science E – Cafeteria/Dining F – Fine Arts G – Fine Arts/Aud
H – Kitchen J – Arena/Boys Athletics K – Girls Athletics L – Aux Gym/Storm Shelter M – Boys Athletics
N – Weight Room P – 12th Grade Q – Classrooms R – Chemistry Labs S – Science Labs
T – Open above Commons U – Fine Arts V – Upper Auditorium Classrooms W – Above Arena

WORK IN PROGRESS

For the period covering 11/11/23 through 11/17/23, the following significant site activities were observed:

- Resinous flooring in kitchen progressing
- Courtyard composite metal panel installation
- Science lab countertops
- Main commons and corridors light fixtures
- Miscellaneous soffit framing
- Floor polishing, painting finishes various areas continuing

LOOK A HEAD

The following activities are projected to be in progress over the next two weeks:

- Competition gym dry-fall paint
- Bistro coiling door installation
- Baseball and softball field layout
- Plastic laminate wall panels and trim
- Black Box pipe grid installation
- Toilet partition and accessory installation

SITE AERIAL

Available via Dropbox Link

<https://bartlettcocke.box.com/s/946fip3xxpg3t5r92kyzikbfnfujm0u0>

CONSTRUCTION UPDATE

WICHITA FALLS LEGACY HIGH SCHOOL

November 17, 2023



ACM Panels Main Entry



Main Commons Lighting



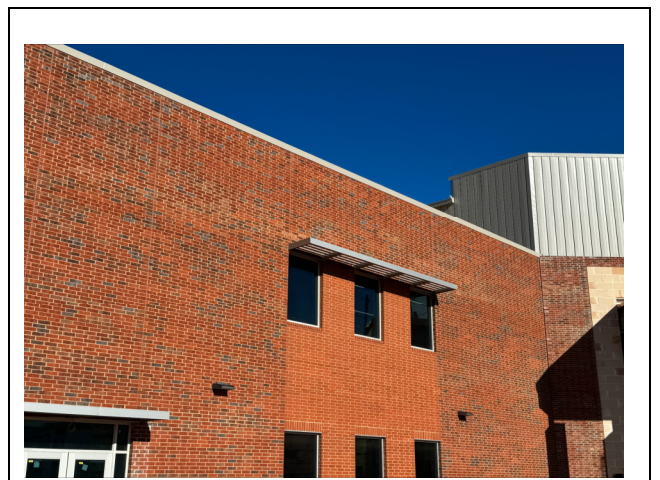
Area C/D Exterior



Science Lab Counters



Exterior Soffit Framing



Area D/E Brick Veneer



Looking North



Looking East