

NOTES:

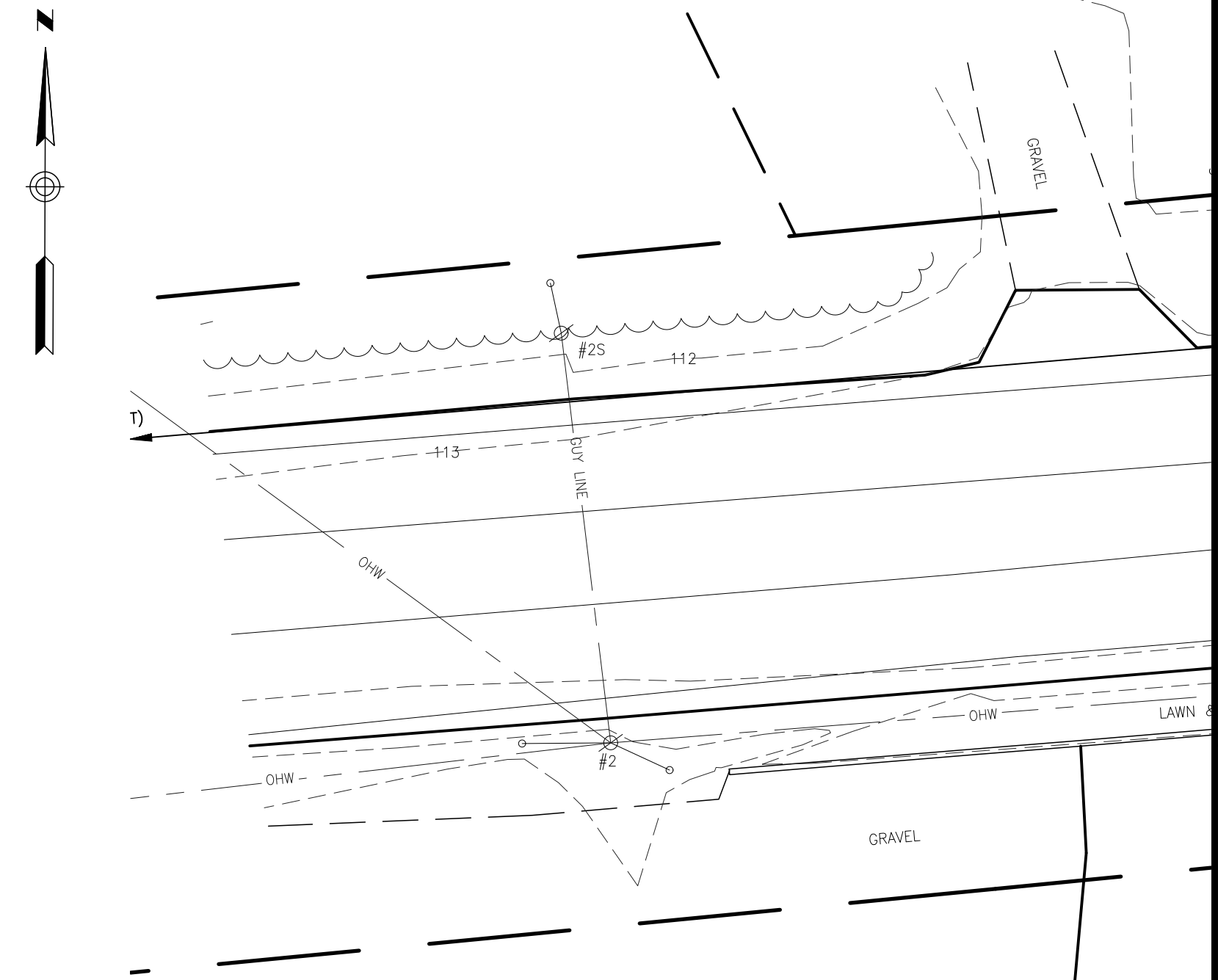
- BEARINGS ARE BASED ON MAINE WEST STATE PLANE COORDINATE SYSTEM NAD 83, DERIVED FROM POST PROCESSED STATIC GPS OBSERVATIONS.
- ELEVATIONS ARE BASED ON NAVD 88, DERIVED FROM POST PROCESSED STATIC GPS OBSERVATIONS.
- PORTIONS OF COUNTY ROAD (ROUTE 22), GORHAM ROAD (ROUTE 114), SACO STREET, AND BEECH RIDGE ROAD ARE BASED ON PLAN REFERENCE 1 AND FOUND MONUMENTS AS SHOWN ON SAID PLAN. FOR OTHER PORTIONS OF THESE ROADWAYS, THE RIGHT OF WAY LINES ARE ASSUMED AND ARE BASED ON RECORD PLANS, SURVEY MARKERS, AND OCCUPATION. THE DISTINCTION BETWEEN "ASSUMED" AND "PER PLAN" IS NOTED THROUGHOUT. THE WIDTH OF ROUTE 22 AND ROUTE 115 IN AREAS UNAFFECTED BY DOT TAKINGS IS 66 FEET. THE WIDTH OF SACO STREET AND BEECH RIDGE ROAD IN AREAS UNAFFECTED BY DOT TAKINGS IS 50 FEET.
- PARCEL LINES ARE BASED ON RECORD PLANS, TOWN GIS, AND FOUND SURVEY MARKERS. THESE LINES ARE APPROXIMATE AND ARE SHOWN FOR INFORMATION PURPOSES ONLY.
- THE UNDERGROUND UTILITIES SHOWN HAVE BEEN LOCATED FROM FIELD SURVEY INFORMATION AND EXISTING DRAWINGS. THE SURVEYOR MAKES NO GUARANTEES THAT THE UNDERGROUND UTILITIES SHOWN COMPRISE ALL SUCH UTILITIES IN THE AREA, EITHER IN SERVICE OR ABANDONED. THE SURVEYOR FURTHER DOES NOT WARRANT THAT THE UNDERGROUND UTILITIES SHOWN ARE IN THE EXACT LOCATION INDICATED ALTHOUGH HE DOES CERTIFY THAT THEY ARE LOCATED AS ACCURATELY AS POSSIBLE FROM INFORMATION AVAILABLE. THE SURVEYOR HAS NOT PHYSICALLY LOCATED THE UNDERGROUND UTILITIES. CALL 1-888-DIGSAFE AT LEAST THREE BUSINESS DAYS BEFORE PERFORMING ANY CONSTRUCTION. DUE TO OSHA CONFINED SPACE REQUIREMENTS, ALL INVERTS AND PIPE SIZES MUST BE VERIFIED PRIOR TO ANY CONSTRUCTION.

PLAN REFERENCES:

- "STATE OF MAINE DEPARTMENT OF TRANSPORTATION RIGHT OF WAY MAP, STATE HIGHWAY '120', SCARBOROUGH, CUMBERLAND COUNTY, FEDERAL AID PROJECT NO. S-0120(7)," DATED JANUARY 1973, D.O.T. FILE NO. 3-217.
- "STATE OF MAINE DEPARTMENT OF TRANSPORTATION RIGHT OF WAY MAP, STATE HIGHWAY '120', SCARBOROUGH, CUMBERLAND COUNTY, FEDERAL AID PROJECT NO. M-0915(1)," DATED AUGUST 1981, D.O.T. FILE NO. 3-301.
- "STANDARD BOUNDARY SURVEY, 88 COUNTY ROAD, SCARBOROUGH, MAINE PREPARED FOR S.C.S. FAMILY REALTY," BY LAND SERVICES INC., DATED OCT., 1997. RECORDED IN THE CUMBERLAND COUNTY REGISTRY OF DEEDS PLAN BOOK 198 PAGE 16.
- "PLAN OF NORTH SCARBOROUGH FIRE STATION LOT ON SACO ROAD AND ROUTE 22, SCARBOROUGH, MAINE FOR THE TOWN OF SCARBOROUGH," BY OWEN HASKELL, INC., DATED FEB. 10, 1988. OHI JOB# 7895 SC.
- "OTTAWA WOODS, BEECH RIDGE ROAD, SCARBOROUGH, MAINE FINAL SUBDIVISION PLAN FOR DOUGLAS A. TINSMAN AND DAVID W. PICKERING," BY LAND USE CONSULTANTS, DATED DEC. 11 1984 AND REVISED THROUGH 1/22/85. RECORDED IN THE CUMBERLAND COUNTY REGISTRY OF DEEDS PLAN BOOK 149 PAGE 26.

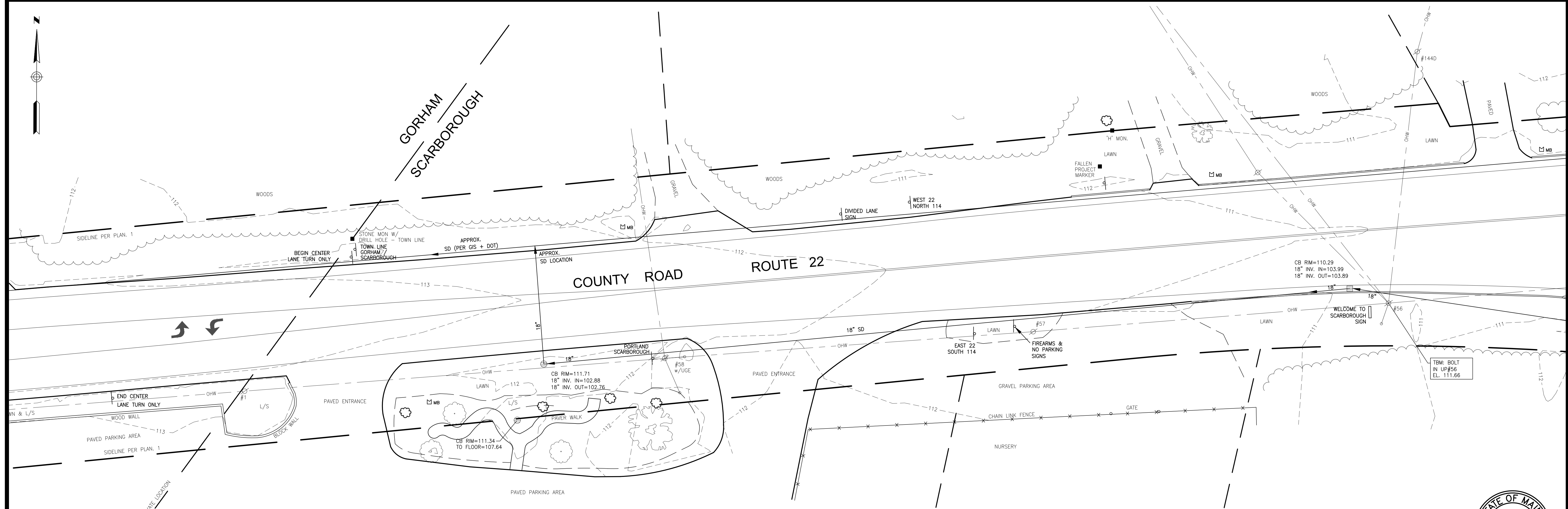
LEGEND:

- | | |
|--------------------------|--------------------------------|
| ● IRON PIPE OR ROD FOUND | —X—X— FENCE |
| ■ MONUMENT FOUND | —OHW— OVERHEAD WIRES |
| ○ UTILITY POLE | —SD— STORM DRAIN |
| ○ MANHOLE | —1.30— 1' CONTOUR |
| ○ SIGN | — — — PARCEL LINES |
| ▭ CATCH BASIN | IPF/IRF IRON PIPE OR ROD FOUND |
| ○ HYDRANT | CONC. CONCRETE |
| ○ WATER VALVE OR SHUTOFF | L/S LANDSCAPED AREA |
| ○ LIGHT POLE | RP REFLECTOR POST |
| ▭ MAILBOX | ○ DECIDUOUS TREE |
| ○ SHRUB | ○ CONIFEROUS TREE |



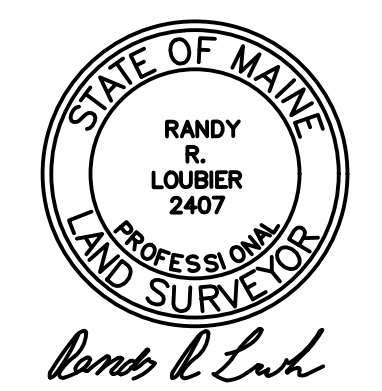
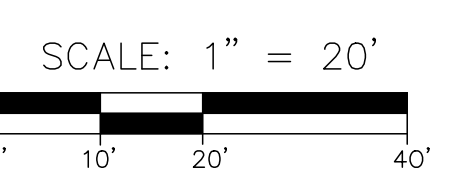
OWEN HASKELL, INC.
 PROFESSIONAL LAND SURVEYORS
 390 U.S. ROUTE ONE, UNIT #10, FALMOUTH, MAINE 04105
 Tel: (207) 774-0424
 www.owenhaskell.com

REV	DESCRIPTION	FIELD BOOK
1		1172
2		1172
3		1172
4		1172
5		1172
6		1172
7		1172
8		1172
9		1172
10		1172
11		1172
12		1172
13		1172
14		1172
15		1172
16		1172
17		1172
18		1172
19		1172
20		1172
21		1172
22		1172
23		1172
24		1172
25		1172
26		1172
27		1172
28		1172
29		1172
30		1172
31		1172
32		1172
33		1172
34		1172
35		1172
36		1172
37		1172
38		1172
39		1172
40		1172
41		1172
42		1172
43		1172
44		1172
45		1172
46		1172
47		1172
48		1172
49		1172
50		1172
51		1172
52		1172
53		1172
54		1172
55		1172
56		1172
57		1172
58		1172
59		1172
60		1172
61		1172
62		1172
63		1172
64		1172
65		1172
66		1172
67		1172
68		1172
69		1172
70		1172
71		1172
72		1172
73		1172
74		1172
75		1172
76		1172
77		1172
78		1172
79		1172
80		1172
81		1172
82		1172
83		1172
84		1172
85		1172
86		1172
87		1172
88		1172
89		1172
90		1172
91		1172
92		1172
93		1172
94		1172
95		1172
96		1172
97		1172
98		1172
99		1172
100		1172



EXISTING CONDITIONS SURVEY
 COUNTY ROAD - ROUTE 22
 GORHAM ROAD - ROUTE 114 &
 SACO STREET, SCARBOROUGH, MAINE

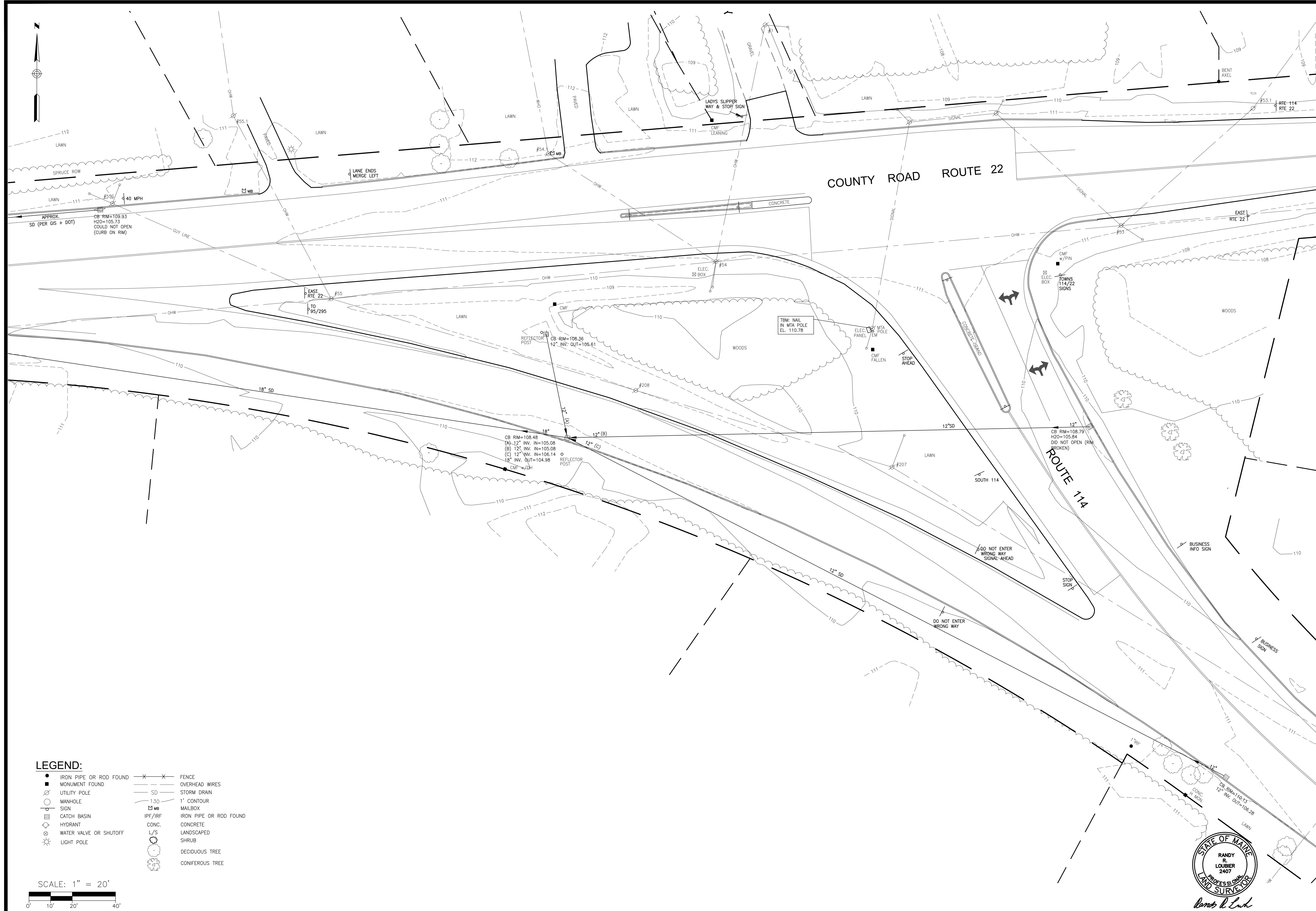
MADE FOR:
MILONE & MACBROOM, INC.
 121 MIDDLE STREET, #201
 PORTLAND, MAINE 04101



JOB NO. 2019-012 SC
 DATE: MAY 31, 2019
 SCALE: 1" = 20'

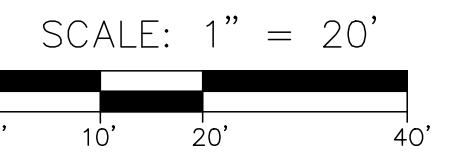
SHEET NUMBER

SV-101



LEGEND:

●	IRON PIPE OR ROD FOUND	—X—X—	FENCE
■	MONUMENT FOUND	—SD—	OVERHEAD WIRES
○	UTILITY POLE	---	STORM DRAIN
○	MANHOLE	---	1' CONTOUR
○	SIGN	MB	MAILBOX
□	CATCH BASIN	IPF/IRF	IRON PIPE OR ROD FOUND
○	HYDRANT	CONC.	CONCRETE
○	WATER VALVE OR SHUTOFF	L/S	LANDSCAPED
○	LIGHT POLE	○	SHRUB
		○	DECIDUOUS TREE
		○	CONIFEROUS TREE



OWEN HASKELL, INC.
 PROFESSIONAL LAND SURVEYORS
 390 U.S. ROUTE ONE, UNIT #10, FALMOUTH, MAINE 04105
 Tel: (207) 774-0424
 www.owenhaskell.com

REV.	DESCRIPTION	FIELD BOOK	DATE
1		2019-012.DWG	
2			
3			
4			
5			
6			
7			
8			
9			
10			

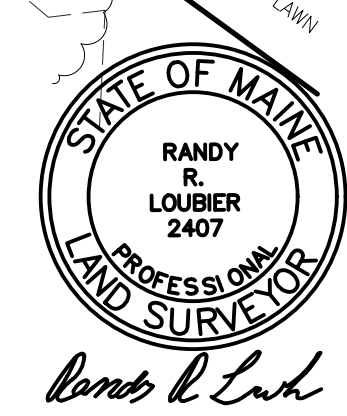
DRAWN BY: JLM/SDG
 CHECKED BY: SDG

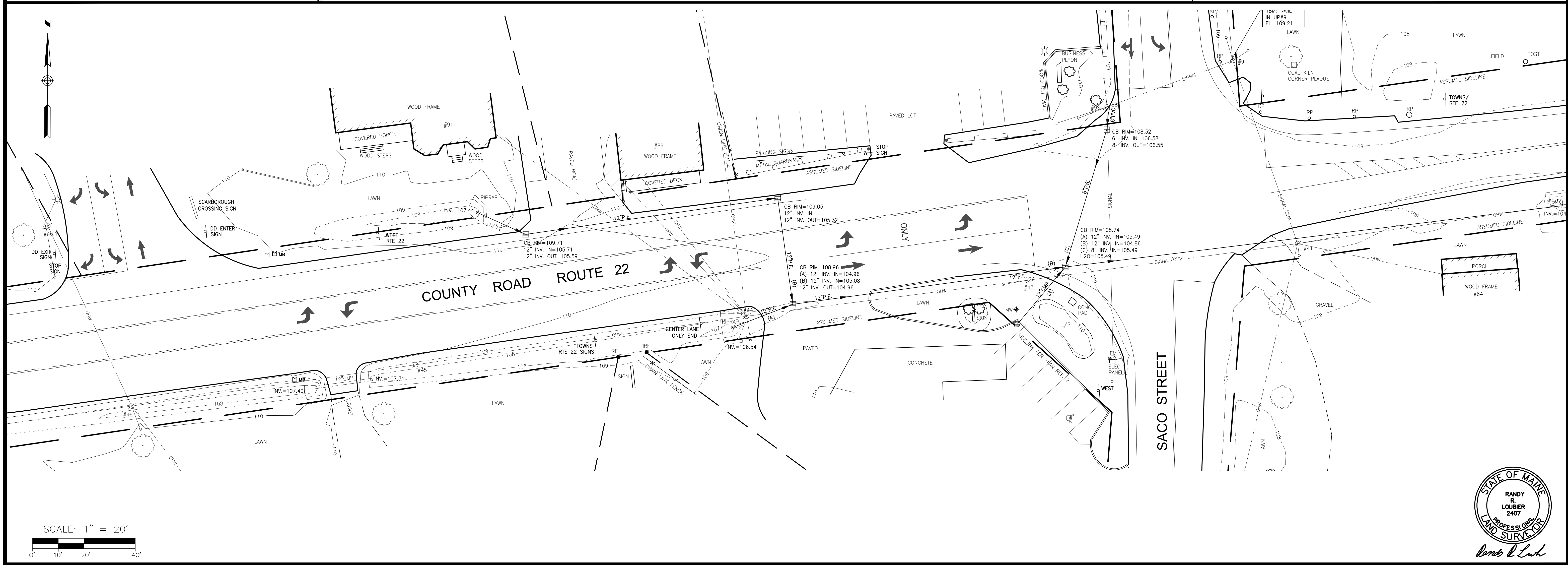
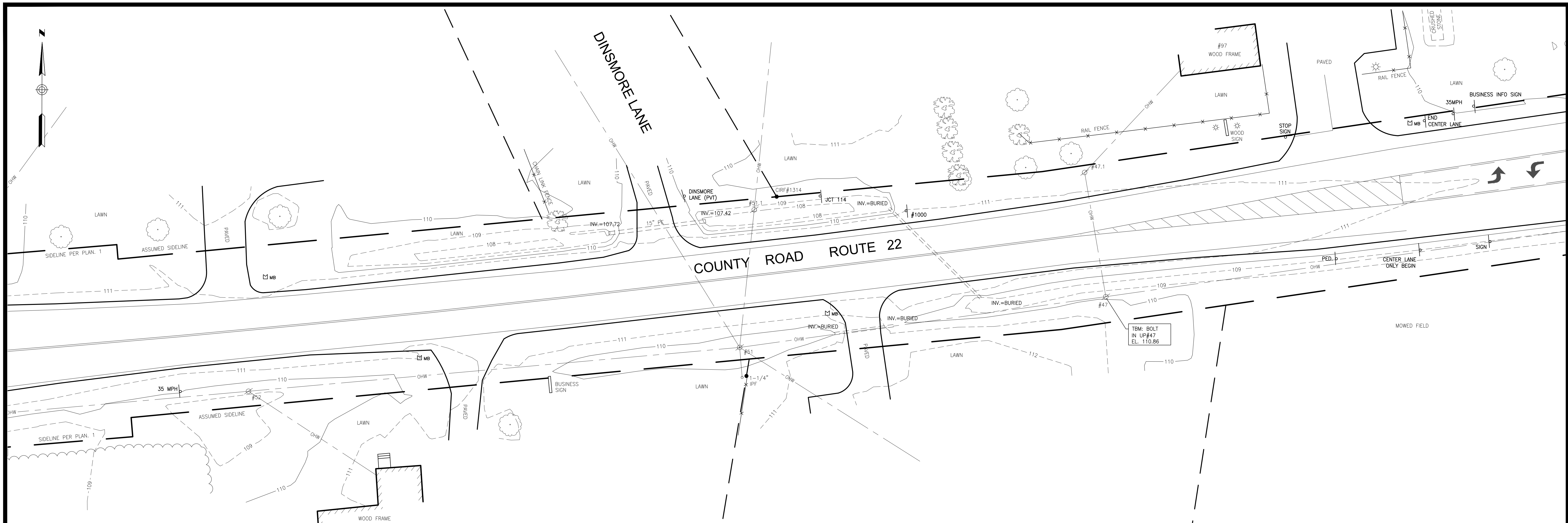
EXISTING CONDITIONS SURVEY
 COUNTY ROAD - ROUTE 22
 GORHAM ROAD - ROUTE 114 &
 SACO STREET, SCARBOROUGH, MAINE

MADE FOR:
MILONE & MACBROOM, INC.
 121 MIDDLE STREET, #201
 PORTLAND, MAINE 04101

JOB NO. 2019-012 SC
 DATE: MAY 31, 2019
 SCALE: 1" = 20'

SHEET NUMBER
SV-102





OWEN HASKELL, INC.
PROFESSIONAL LAND SURVEYORS
390 U.S. ROUTE ONE, UNIT #10, FALMOUTH, MAINE 04105
Tel: (207) 774-0424
www.owenhaskell.com

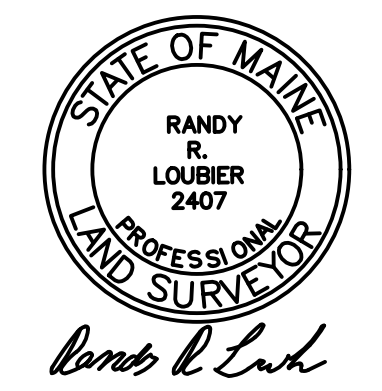
REV	DESCRIPTION	FIELD BOOK
1		1172
2		1172
3		1172
4		1172
5		1172
6		1172
7		1172
8		1172
9		1172
10		1172
11		1172
12		1172
13		1172
14		1172
15		1172
16		1172
17		1172
18		1172
19		1172
20		1172

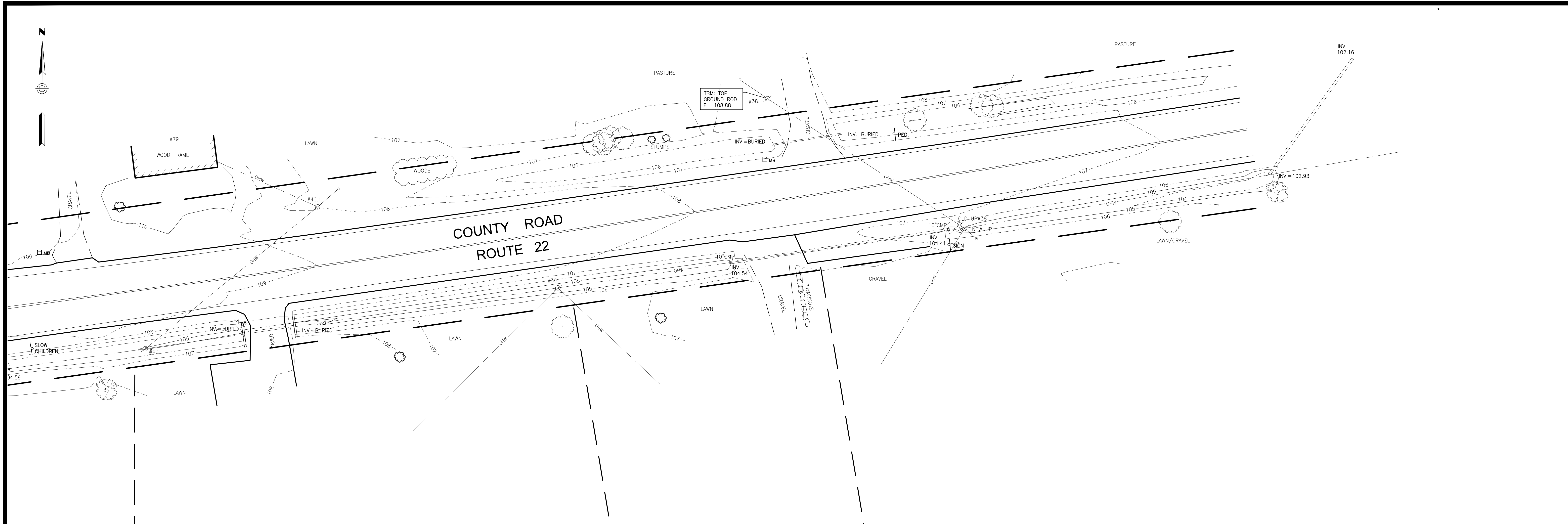
DRAWN BY: JLM/SDG
CHECKED BY: SDG

EXISTING CONDITIONS SURVEY
COUNTY ROAD - ROUTE 22
GORHAM ROAD - ROUTE 114 &
SACO STREET, SCARBOROUGH, MAINE

MADE FOR:
MILONE & MACBROOM, INC.
121 MIDDLE STREET, #201
PORTLAND, MAINE 04101

JOB NO. 2019-012 SC
DATE: MAY 31, 2019
SCALE: 1" = 20'
SHEET NUMBER
SV-103





OWEN HASKELL, INC.
 PROFESSIONAL LAND SURVEYORS
 390 U.S. ROUTE ONE, UNIT #10, FALMOUTH, MAINE 04105
 Tel. (207) 774-0424
 www.owenhaskell.com

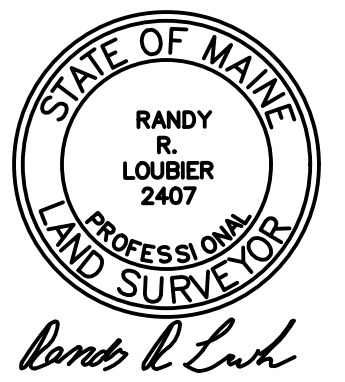
REV	DESCRIPTION	FIELD BOOK	DATE
1		1172	
DRAWN BY: JLM/SDG		2019-012.DWG	
CHECKED BY: SDG			

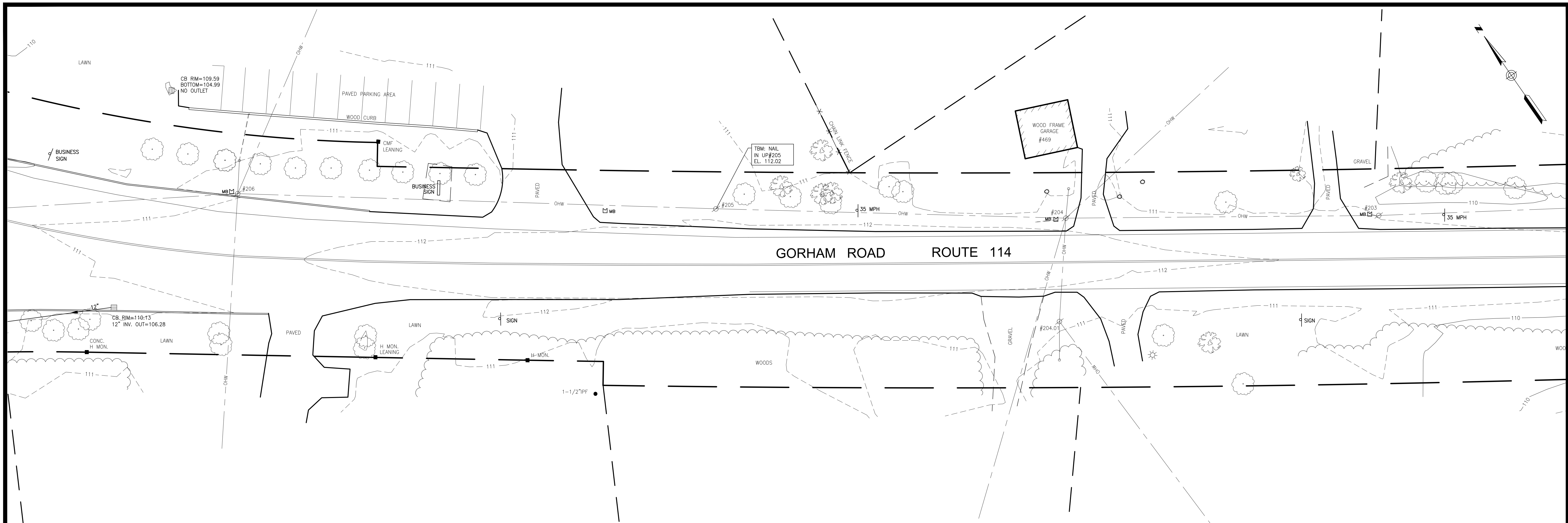
EXISTING CONDITIONS SURVEY
 COUNTY ROAD - ROUTE 22
 GORHAM ROAD - ROUTE 114 &
 SACO STREET, SCARBOROUGH, MAINE

MADE FOR:
MILONE & MACBROOM, INC.
 121 MIDDLE STREET, #201
 PORTLAND, MAINE 04101

JOB NO. 2019-012 SC
 DATE: MAY 31, 2019
 SCALE: 1" = 20'

SHEET NUMBER
SV-104





OWEN HASKELL, INC.
 PROFESSIONAL LAND SURVEYORS
 390 U.S. ROUTE ONE, UNIT #10, FALMOUTH, MAINE 04105
 Tel: (207) 774-0424
 www.owenhaskell.com

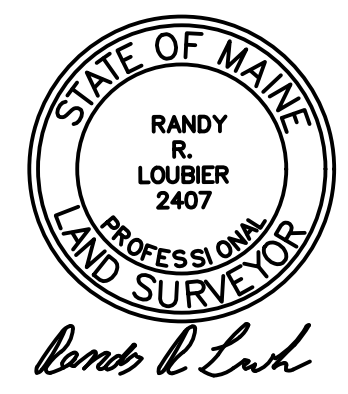
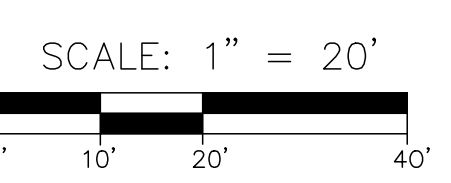
REV	DESCRIPTION	FIELD BOOK
		1172
		2019-012.DWG
		SDG

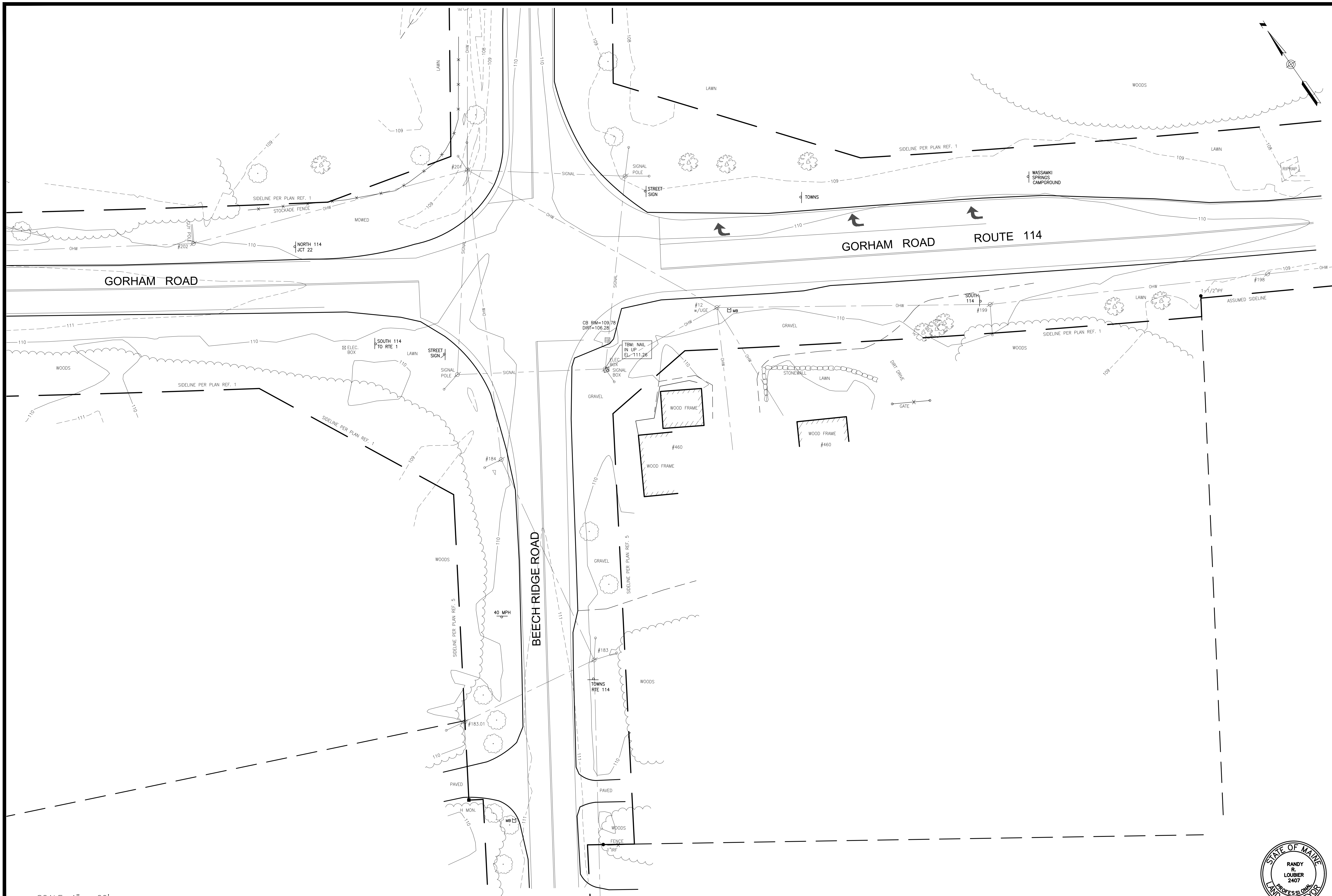
EXISTING CONDITIONS SURVEY
 COUNTY ROAD - ROUTE 22
 GORHAM ROAD - ROUTE 114 &
 SACO STREET, SCARBOROUGH, MAINE

MADE FOR:
 MILONE & MACBROOM, INC.
 121 MIDDLE STREET, #201
 PORTLAND, MAINE 04101

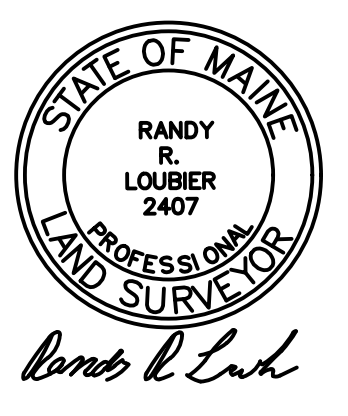
JOB NO. 2019-012 SC
 DATE: MAY 31, 2019
 SCALE: 1" = 20'

SHEET NUMBER
SV-105





SCALE: 1" = 20'



OWEN HASKELL, INC.
 PROFESSIONAL LAND SURVEYORS
 390 U.S. ROUTE ONE, UNIT #10, FALMOUTH, MAINE 04105
 Tel. (207) 774-0424
 www.owenhaskell.com

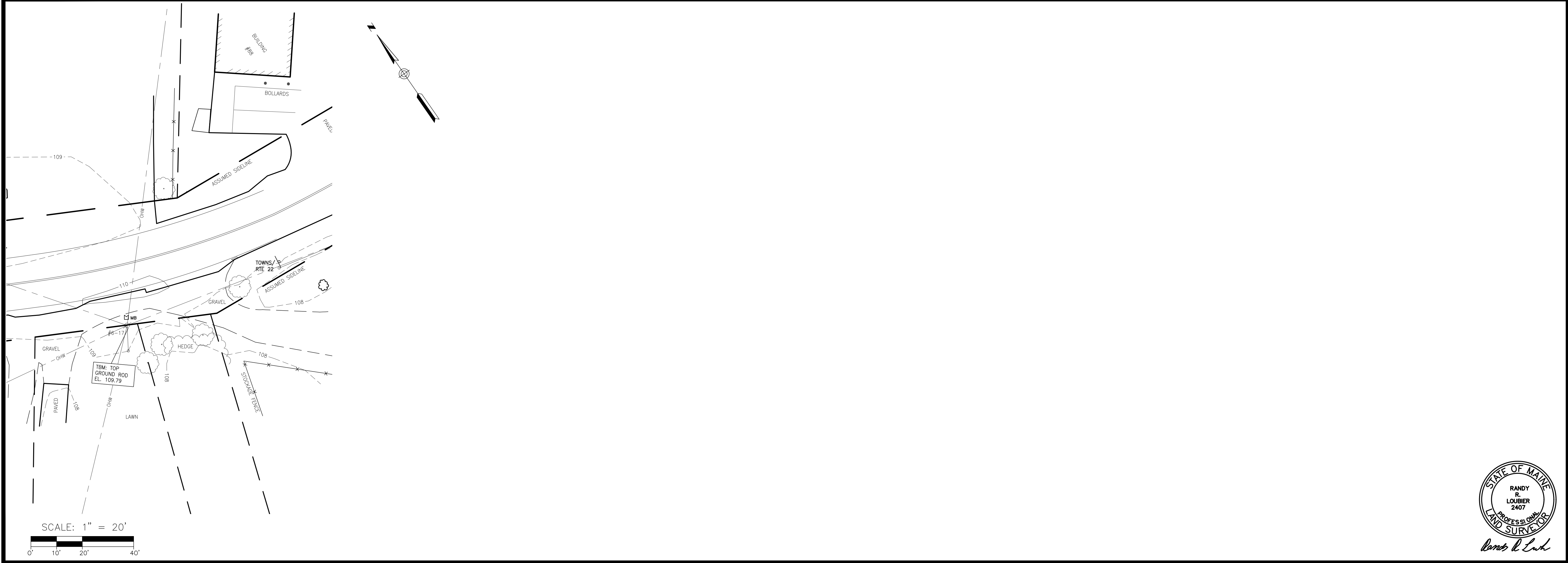
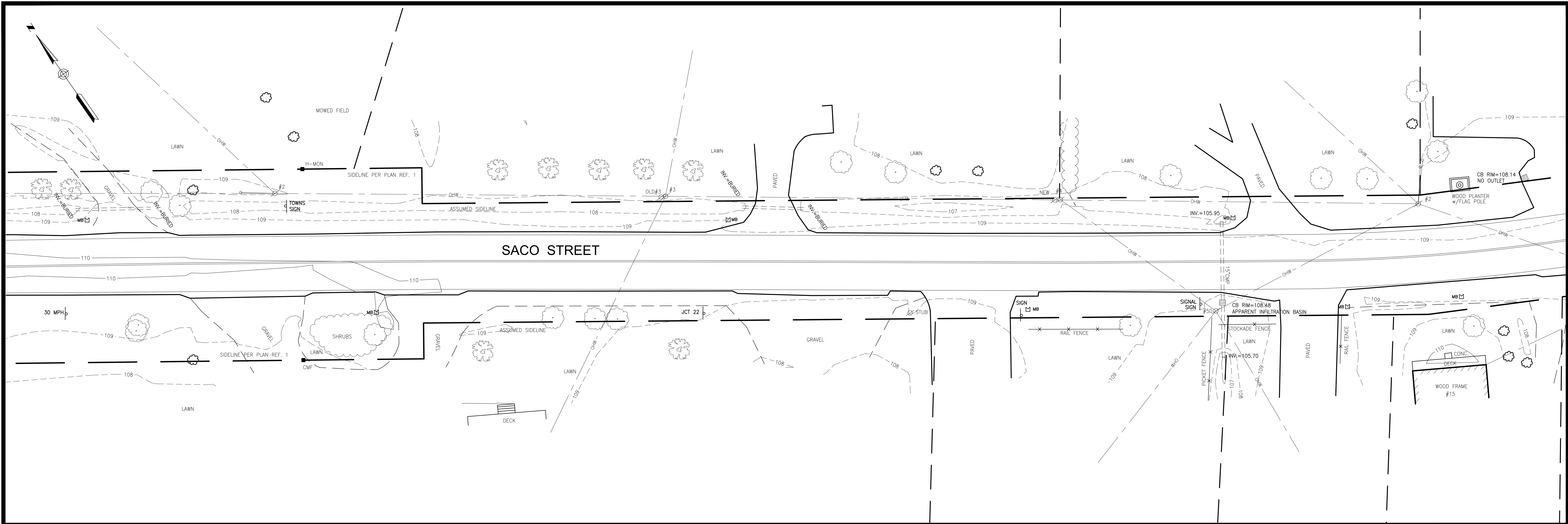
REV	DESCRIPTION	FIELD BOOK	DATE
1		1172	
2			
3			
4			
5			
6			
7			
8			
9			
10			
11			
12			
13			
14			
15			
16			
17			
18			
19			
20			
21			
22			
23			
24			
25			
26			
27			
28			
29			
30			
31			
32			
33			
34			
35			
36			
37			
38			
39			
40			
41			
42			
43			
44			
45			
46			
47			
48			
49			
50			
51			
52			
53			
54			
55			
56			
57			
58			
59			
60			
61			
62			
63			
64			
65			
66			
67			
68			
69			
70			
71			
72			
73			
74			
75			
76			
77			
78			
79			
80			
81			
82			
83			
84			
85			
86			
87			
88			
89			
90			
91			
92			
93			
94			
95			
96			
97			
98			
99			
100			

EXISTING CONDITIONS SURVEY
 COUNTY ROAD - ROUTE 22
 GORHAM ROAD - ROUTE 114 &
 SACO STREET, SCARBOROUGH, MAINE

MADE FOR:
 MILONE & MACBROOM, INC.
 121 MIDDLE STREET, #201
 PORTLAND, MAINE 04101

JOB NO. 2019-012 SC
 DATE: MAY 31, 2019
 SCALE: 1" = 20'

SHEET NUMBER
 SV-106



SCALE: 1" = 20'

OWEN HASKELL, INC.
 PROFESSIONAL LAND SURVEYORS
 390 U.S. ROUTE ONE, UNIT #10, FALMOUTH, MAINE 04105
 Tel: (207) 774-0424
 www.owenhaskell.com

REV	DESCRIPTION	FIELD BOOK
		1172
		2019-012.DWG

DRAWN BY: JLM/SDG
 CHECKED BY: SDG

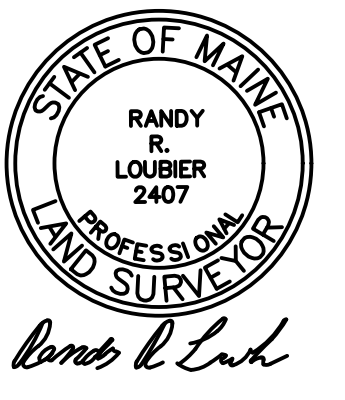
EXISTING CONDITIONS SURVEY
 COUNTY ROAD - ROUTE 22
 GORHAM ROAD - ROUTE 114 &
 SACO STREET, SCARBOROUGH, MAINE

MADE FOR:
MILONE & MACBROOM, INC.
 121 MIDDLE STREET, #201
 PORTLAND, MAINE 04101

JOB NO. 2019-012 SC
 DATE: MAY 31, 2019
 SCALE: 1" = 20'

SHEET NUMBER

SV-107



Randy R. Loubier