



Tippecanoe School Corporation

Furniture Standards

2023 - 2024

Furniture Catalog Procedures

The Furniture Catalog contains several options of standardized furniture and equipment that have been approved by the TSC Business Office. Vendors currently include: Lee Company, Sharp School Supplies, and Krueger International. Additional Vendors may be added at a later date. All furniture and equipment listed has been selected due to special pricing and standardizing across the district. By standardizing these furniture and equipment options, it will be easier to replace pieces in the future. There are pre-approved color selections for all items. Requests for any additional color options are not permitted.

*** If there are any issues in contacting the Vendor or obtaining the Quote, please contact:**

Karmen Redinbo

765-474-2481 x8231

kmredinbo@tsc.k12.in.us

Amanda Brackett

765-474-2481 x8218

ambrackett@tsc.k12.in.us

*** In the event of issues during shipping, installation, or any other issue, please make a note in the Purchase Order/Doc Inquiry AND email**

Invoices@tsc.k12.in.us

*** In the event you receive the Invoice directly, please forward to**

Invoices@tsc.k12.in.us

Procedure to order as follows:

1. Contact Vendor directly to obtain a Quote for your requested furniture/equipment.

You will need:

- Vendor name and number
- Furniture/Equipment item number
- Color Option (if applicable)
- Area Measurements (if applicable)

Vendor #:

- Lee Company Inc. #36100
765-586-9706
Shaun Dougherty
SDougherty@leecompanyinc.com

*** When obtaining the Quote, the Vendor may request to come take measurements. In the event that a Quote is given first, do NOT create a Requisition until you have the measurements checked by the Vendor to ensure the product will fit the desired location. ***

- Sharp School Supplies #57600
219-942-6903
Gary Allen
GAllen@sharpschoolservices.com

OR David Sharp
DSharp@sharpschoolservices.com

- Krueger International #783540
317-432-9990
Greg McDaniel
Greg.McDaniel@ki.com

2. Create a Requisition for the obtained Quote using the appropriate Vendor. In the description for the Requisition, be sure to include School Abbreviation and Room/Location Description where it will be located.

Examples: CO / Business Office / Brackett Office

HHS / Science / Smith Office

3. Each item line should include:

- New or Replacing old furniture/equipment
- Item name
- Item number
- Item color
- Item quantity (entered in FMS)

Examples: New / Brief Desk Name / #1234 / Mahogany

Replace / Brief Chair Name / #5678 / Black

4. Upload the obtained Quote to the Requisition Doc Inquiry.

2023-2024 TSC Furniture Standards - Pricing List

1 – Student Classroom Chairs – All Grade Levels	Price	Vendor
1A - Small 14" Seat Height	\$ 67.50	LEE
1B - Medium 16" Seat Height	\$ 76.68	LEE
1C - Large 18" Seat Height	\$ 81.08	LEE

2 – One/Two Student Classroom Tables – All Grades Levels	Price	Vendor
2A - 28"Wx21"D	\$ 197.00	SHARP
2B - 60"Wx24"D	\$ 248.00	SHARP
2C - 60"Wx20"D	\$ 245.00	SHARP
2D - Book Box	\$ 42.00	SHARP

3 –Two Student Classroom Tables – All Grades Levels	Price	Vendor
3 - 60"Wx24"D	\$ 312.00	SHARP

4- Admin and Office Side Chair	Price	Vendor
4A Glides	\$ 356.48	LEE
4B Casters	\$ 356.48	LEE

5 – Admin Guest Chair	Price	Vendor
5A-23"Wx24"DX33.5"H	\$ 366.15	LEE
5B -33"Wx25.5"DX35.75"H	\$ 1,038.89	LEE

6 -- Student Classroom Desks	Price	Vendor
6 - 24"Wx18.5"DX24"-31"H	\$ 154.00	SHARP

7 – Student Classroom Activity Tables	Price	Vendor
7A - 36"x72"	\$ 387.00	SHARP
7B - 48"x72"	\$ 402.00	SHARP
7C - 36"x84"	\$ 414.00	SHARP
7D - 48"x84"	\$ 427.00	SHARP

8 -- Student Classrooms Storage - K-5	Price	Vendor
8A - 30"Wx18"DX29"H	\$ 1,191.00	KI
8B - 30"Wx18"DX42"H	\$ 1,385.25	KI
8C - 44"Wx18"DX29"H"	\$ 1,488.00	KI
8D - 44"Wx18"DX42"H	\$ 1,722.75	KI

9 – Makers Space and Lab Type Work Tables	Price	Vendor
9A - 54"Wx30"DX36"H	\$ 1,380.00	KI
9B - 54"Wx48"DX36"H	\$ 2,268.00	KI
9C - 54"Wx30"DX36"H with doors	\$ 1,514.25	KI
9D - 54"Wx48"DX36"H with doors	\$ 2,479.50	KI

10 – Science Lab Tables	Price	Vendor
10A – 60"Wx24"Dx30"H	\$ 919.63	LEE
10B – 72"Wx24"Dx30"H	\$ 1,039.51	LEE

11 – Lab Stools	Price	Vendor
11A – 18"H Seat	\$ 53.75	SHARP
11B – Adjustable 24.5"-32.5"H	\$ 74.25	SHARP

12 – Teacher Sit-Stand Desks – All Grade Levels	Price	Vendor
12 A- 66"Wx24"D	\$ 761.90	LEE
12B - Pencil Tray	\$ 66.50	LEE

13 – Teacher Desk Storage – All Grade Levels	Price	Vendor
13 – 15"Wx19"Dx21"H	\$ 392.86	LEE

14 – Teacher Lecterns – All Grade Levels	Price	Vendor
14A – 36"Wx24"D	\$ 598.08	LEE
14B – Storage Basket	\$ 90.05	LEE
14C – 27"Wx20"D	\$ 553.31	LEE
14D – Storage Basket	\$ 90.05	LEE

15 – Teacher Classroom Chairs – All Grade Levels	Price	Vendor
15A - Armless	\$ 217.45	LEE
15B - With Arms	\$ 258.67	LEE

16 – Cafeteria Tables – All Grade Levels	Price	Vendor
16A - 60"x96" – Seats 8	\$ 1,817.45	LEE
16B - 60"x120" – Seats 12	\$ 1,926.26	LEE
16C - 60"x140" – Seats 16	\$ 2,228.80	LEE
16D - 60"x140" – Seats 12 - for high schools	\$ 2,228.80	LEE

17 – Administration - Office Desks	Price	Vendor
17A - Desk 60"x30"	\$ 892.01	LEE
17B - Desk 72"x30"	\$ 944.45	LEE
17C – Desk Return 48"x24" (For 72" desk with return – L shaped desk)	\$ 370.18	LEE
17D – Desk Return 36"x20" (For 60" desk with return – L shaped desk)	\$ 351.38	LEE
17E – Bridge 48"x24" (to connect desk to credenza)	\$ 263.98	LEE
17F – Bridge 36"x20" (to connect desk to credenza)	\$ 255.58	LEE
17H - Credenza 72"x24" (2) Lat Files (On R/L) and (2) Doors (R/L)	\$ 1,127.55	LEE
17I - Credenza Hutch 66"Wx16"Dx36"H with Solid Doors	\$ 669.03	LEE
17J - Credenza Hutch 72"Wx16"Dx36"H with Solid Doors	\$ 685.84	LEE

18 – Administration - Sit-Stand Desks	Price	Vendor
18A - 66"x24"	\$ 1,013.61	LEE
18B - 72"x24"	\$ 960.35	LEE

19 – Administration - Desk Storage	Price	Vendor
19 - 15"Wx19"Dx21"H	\$ 392.86	LEE

20 – Administration - Conference Table and Credenza	Price	Vendor
20A - 72"W x36" Boat shape	\$ 782.51	LEE
20B - 96"W x48" Boat shape	\$ 1,669.70	LEE
20C - 120"W x48" Boat shape	\$ 1,880.01	LEE
20D - 144"Wx48" Boat shape	\$ 2,052.69	LEE
20E - Power only	\$ 104.22	LEE
20F - Power and USB	\$ 133.13	LEE
20G - Grommet only	\$ 33.97	LEE

21 – Administration - Conference Credenza	Price	Vendor
21A- 36"X20"x29"H (2) Door	\$ 513.20	LEE
21B- 42"X20"x29"H (2) Door	\$ 1,143.17	LEE
21D- 57"X20"x36"H (3) Door	\$ 1,419.59	LEE

22 – Supplemental Tables - Office and Conference	Price	Vendor
22A - 60"Wx24"D	\$ 656.14	LEE

23 – Administrative/Conference Chairs	Price	Vendor
23A - Armless	\$ 217.45	LEE
23B - With Arms	\$ 258.67	LEE

24 – File Storage	Price	Vendor
24A - 36"W x 18"D x 28"H (2) Drawer Lateral	\$ 685.81	LEE
24B - 36"W x 18"D x 39"H (3) Drawer Lateral	\$ 905.24	LEE
24C - 36"W x 18"D x 52"H (4) Drawer Lateral	\$ 1,213.31	LEE

25 – Bookcases - Stationary	Price	Vendor
25A - 34"W x 29"H x 12"D (2) shelves total	\$ 196.14	LEE
25B - 34"W x 41"H x 12"D (3) shelves total	\$ 237.46	LEE
25C - 34"W x 59"H x 12"D (4) shelves total	\$ 347.44	LEE
25D - 34"W x 12"D extra shelf	\$ 68.53	LEE

26 – Bookcases - Mobile	Price	Vendor
26A - 42 Starter: 42"H x 37 3/16"W x 24"D	\$ 1,335.09	LEE
26B - 42 Starter/Adder: 42"H x 73 3/8"W x 24"D	\$ 2,264.95	LEE
26C - 48 Starter: 48"H x 37 3/16"W x 24"D	\$ 1,410.97	LEE
26D - 48 Starter/Adder: 48"H x 73 3/8"W x 24"D	\$ 2,405.29	LEE
26E - 60 Starter: 60 1/2"H x 37 3/16"W x 24"D	\$ 1,719.55	LEE
26F - 60 Starter/Adder: 60 1/2"H x 73 3/8"W x 24"D	\$ 2,958.90	LEE

27 -- Nurse Office Recovery Bed	Price	Vendor
27 – 24" x 72"	\$ 639.33	LEE

28 --Folding Tables	Price	Vendor
28A – 18" x 60"	\$ 613.73	LEE
28B – Storage Cart	\$ 603.54	LEE

29 – Administration Task Chair	Price	Vendor
29 - With Arms	\$ 484.36	LEE

1 - Student Classroom Chairs

Description

Flexible and ergonomically shaped seat with lumbar support for easy position changes, eliminating stagnant environments.



A.

Construction

- Heavy duty tubular steel
- Fully welded frame
- Nylon Swivel Glides
- Flexible reinforced poly shell without sharp edges

Size

1A. 14" seat height x 17.5" d x 25.5" h

1B. 16" seat height x 20.3" d x 31.8" h

1C. 18" seat height x 22" d x 33.5" h

Basis of Design

1A. Moore Co Hierarchy 4 Leg 14" Chair – 53314-1-XXXX-NA-PL

1B. Moore Co Hierarchy 4 Leg 16" Chair – 53316-1-XXXX-NA-PL

1C. Moore Co Hierarchy 4 Leg 18" Chair – 53318-1-XXXX-NA-PL

Colors

- Paint: Platinum



- Poly: Black



Vendor: Lee Company

2023 Furniture Standards

2A - One Student Classroom Tables

All Grade Levels

Description

Adjustable height tables from 23" to 32" for a single student. Sturdy steel, powder-coated legs with chrome-plated inserts. Edge banding matched to top or leg frame.

Construction

- **Table Top:** Particle board core is 1-1/8" with a 1/32" high pressured laminated surface. The edge of the work surface features a 1/4" T-mold edge band. The banding is hydraulically inserted.
- **Legs:** 2" round 18-gauge steel tube, welded to 12-gauge triangular steel plate with two steel open hairpin braces.
- **Insert Legs:** 1-7/8" round 16-gauge steel tube with holes in increments of 1" that allow height adjustability between 23"-32".
- **Glides:** Color coordinated polypropylene 2" stationary glides.

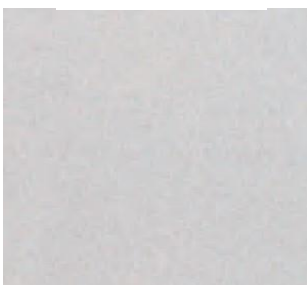
Sizes

2A • Grades K-12	Single Student	28"W x 21"D x 23"-32"H
2D • Bookbox		17"W x 11"D x 4"H

Colors

- Plastic Laminate Top: Grey Nebula
- Table Edge Color: Light Grey
- Frame Color: Light Grey
- Bookbox Color: Light Grey

Grey Nebula



Light Grey



*Actual desk will not have curve in front edge

Manufacturer

Academia Furniture Industries

Vendor

Sharp School Services, Inc.

2023 Furniture Standards

2B & 2C - Two Student Classroom Tables

All Grade Levels

Description

Adjustable height tables from 23" to 32" for two students. Sturdy steel, powder-coated legs with chrome-plated inserts. Edge banding matched to top or leg frame.

Construction

- **Table Top:** Particle board core is 1-1/8" with a 1/32" high pressured laminated surface. The edge of the work surface features a 1/4" T-mold edge band. The banding is hydraulically inserted.
- **Legs:** 2" round 18-gauge steel tube, welded to 12-gauge triangular steel plate with two steel open hairpin braces.
- **Insert Legs:** 1-7/8" round 16-gauge steel tube with holes in increments of 1" that allow height adjustability between 23"-32".
- **Glides:** Color coordinated polypropylene 2" stationary glides.

Sizes

2B • Grades K-12	2-Student	60"W x 24"D x 23"-32"H
2C • Grades K-12	2-Student	60"W x 20"D x 23"-32"H

Model# HL-2460

Colors

- Plastic Laminate Top: Grey Nebula
- Table Edge Color: Light Grey
- Frame Color: Light Grey

Grey Nebula



Light Grey



Manufacturer

Academia Furniture Industries

Vendor

Sharp School Services, Inc.



2023 Furniture Standards

3 - Two Student Classroom Tables

All Grade Levels

Description

Contemporary student table for 2 students. Sturdy T-leg design adjustable to heights from 22" to 33". Includes stretcher bar for added strength. Edge banding to match frame.



Construction

- **Table Top:** The desktop is 5/8" particleboard core with high pressured laminated surface. The edge of the work surface features a 1/8" PVC edge banding that is hydraulically inserted.
- **Frame:** The frame is fully unitized steel comprised of two 12-gauge steel L-brackets, two 2"x1" rectangular 16-gauge steel upper legs and one 16-gauge, 2"x1" steel stretcher bar that attaches the frame to the upper legs. The complete frame is smooth and finished before being powder coated.
- **Glides:** Height adjustable nylon glides are standard. Legs are outfitted with a custom adaptor to secure glides and insure wobble free use.

Sizes

3 • Grades K-12 2-Student Desk 60"W x 24"D x 23"-32"H Model# TL-2460

Colors

- Plastic Laminate Top: Grey Nebula
- Table Top Edge Color: Black
- Frame Color: Black

Grey Nebula



Black



Manufacturer

Academia Furniture Industries

Vendor

Sharp School Services, Inc.

4 - Administration and Office Side Chairs

Description

Four leg chairs with the option of casters or glides.



4A

Construction

- Tubular steel frame
- Powder-coat frame
- Nylon glides for multiple surfaces
- Fully upholstered back and seat
- Fully assembled.
- A. Weight Rating 300lb, B. Weight Rating 500lbs

Size

4a. and 4b. 25"w x 21.75"d x 33.5"h, 17.5" Seat Depth and 18." Seat Height

Basis of Design

4A. HON Ignition Multi-Purpose Stacking Guest Chair Glides HIGS6.F.E.OS.CU10.T

4B. HON Ignition Multi-Purpose Stacking Guest Chair Casters HIGS6.F.S.OS.CU10.T

Colors

- Frame: Black
- Fabric: Centurion Black

Vendor: Lee Company

5 - Administration Guest Chairs

Description

Four leg chairs guest chairs appropriate for an administration setting. Fully upholstered back and seat on a steel frame with glides.



5a.



5b.

Construction

- Tubular steel frame
- Powder-coat frame
- Nylon glides for multiple surfaces
- Fully upholstered back and seat
- Fully assembled.
- A. Weight Rating 300lb, B. Weight Rating 500lbs

Size

5A. 23"w x 24"d x 35.5"h, 18" Seat Depth and 18.5" Seat Height

5B. 33"w x 25.5"d x 35.75"h, 18.75" Seat Depth and 20" Seat Height

Basis of Design

5A. HON Ignition HIGL Guest Chair HIGCL.E.U.CU10.T

5B. HON Ignition HIB50 Bariatric Lounge HIB50.F.E.U.CU10.T

Colors

- Frame: Black
- Fabric: Centurion Black

Vendor: Lee Company

2023 Furniture Standards

6 - Student Classroom Desks

K-5 Classrooms

Description

Adjustable height open front student desk with a steel book box. Built with steel tubing and braces for strength. Self leveling, nylon glides standard.

Construction

- **Desk Top:** 5/8" thick hard plastic desktop with pencil groove.
- **Frame:** Chrome-plated 1-1/8" round 18-gauge steel legs. Inserts are 1" 18-gauge with two self-locking screws. Legs adjust in 1" increments from 24" to 31" in height.
- **Bookbox:** Open front powder-coated 20-gauge steel with pencil groove and rolled front edges. 21"W x 17"D x 4-1/2"H
- **Glides:** Self-adjusting nickel-plated casing with nylon inserts.



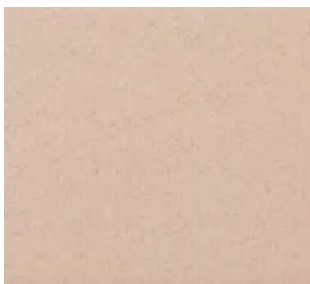
Sizes

6 • Grades K-5 1-Student Desk 24"W x 18-1/2"D x 24"-31"H Model# 1200HP

Colors

- Hard Plastic Top: Beige
- Frame Color: Chrome
- Bookbox Color: Black

Beige



Black



Chrome



Manufacturer

Academia Furniture Industries

Vendor

Sharp School Services, Inc.

2023 Furniture Standards

7 - Student Classroom Activity Tables

Grades K-5

Description

Adjustable height kidney shaped tables from 23" to 32" for multiple students. Sturdy steel, powder-coated legs with chrome-plated inserts. Edge banding matched to top or leg frame.



Construction

- **Table Top:** Kidney shaped table top that is 1-1/8" thick fiberboard with a high pressure laminate surface and PVC black edge banding.
- **Legs:** Powder-coated 2-1/8" round 18-gauge steel legs. Leg inserts are chrome-plated 2" round 16-gauge steel with two self-locking screws. Legs adjust in 1" increments to heights from 23" to 32".
- **Glides:** Color coordinated polypropylene 2" stationary glides.

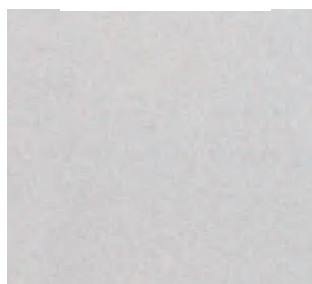
Sizes

7A • Grades K-5	Kidney Table	72"L x 36"W x 23"-32"H	Model# HL-3672K
7B • Grades K-5	Kidney Table	72"L x 48"W x 23"-32"H	Model# HL-4872K
7C • Grades K-5	Kidney Table	84"L x 36"W x 23"-32"H	Model# HL-3684K
7D • Grades K-5	Kidney Table	84"L x 48"W x 23"-32"H	Model# HL-4884K

Colors

- Plastic Laminate Top: Grey Nebula
- Table Edge Color: Light Grey
- Frame Color: Light Grey

Grey Nebula



Light Grey



Manufacturer

Academia Furniture Industries

Vendor

Sharp School Services, Inc.

8 - STUDENT CLASSROOM STORAGE

K-5 Classrooms

Description

Classroom open storage cabinets for bin storage including 3" and 6" high totes. Tested in compliance with ASTM E 84.

Construction

- Shell frames and panels durable steel construction in powder-coat paint.
- Bases and frame uprights with 18-gauge steel reinforcement members welded in for superior strength.
- High-pressure laminate top over a high-density particleboard core with (1-1/4" thick) 2mm flat polypropylene bonded edge band
- Tote storage unit system including totes
- Cabinets with glides - steel or nylon



Sizes

- 8A • Shells - 30"W x 18"D x 29"H- (2) Column of Totes 12"W x 17"D x (8) 3"H and (2) 6"H Totes
- 8B • Shells - 30"W x 18"D x 42"H- (2) Column of Totes 12"W x 17"D x (10) 3"H and (4) 6"H Totes
- 8C • Shells - 44"W x 18"D x 29"H- (3) Column of Totes 12"W x 17"D x (12) 3"H and (3) 6"H Totes
- 8D • Shells - 44"W x 18"D x 42"H- (3) Column of Totes 12"W x 17"D x (15) 3"H and (6) 6"H Totes

(Removeable Tote Sizes - OD 12.94"W x 16.75"D x 3.5"/5.5"H / ID 10.84"W x 14.25"D x 2.84"/5.85"H)

Basis of Design

KI, Ruckus Collection, Gratnells Tote Storage

Colors

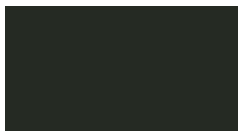
- Shell: Flannel
- Plastic Laminate Top: Satin Stainless Steel Laminate
- Table edge: Match table laminate

Top: Plastic Laminate



Satin Stainless Steel
Plastic Laminate

Shell: Steel



Shell: FN Flannel

Vendor: KI

9 - MAKER SPACE AND LAB TYPE WORK TABLES

Description

Classroom work tables with open removeable storage bins. Available with glides or casters. Tested in compliance with ASTM E 84.

Construction

- Shell frames and panels durable steel construction in powder-coat paint.
- Bases and frame uprights with 18-gauge steel reinforcement members welded in for superior strength
- Top options- 1 1/4" Laminate with 2mm flat polypropylene bonded edge band, 1 3/4" Butcher Block and 1" Phenolic Resin
- Tote storage included - 'Gratnells' type trays
- Glides - steel or nylon



Sizes

- 9A • Shell- Single Faced: 54"W x 30"D x 36"H, (2) 3" Totes and (6) 6" Totes
- 9B • Shell- Double Faced: 54"W x 48"D x 36"H, (2) 3" Totes and (6) 6" Totes, 2x2 Cubbies
- 9C • Shell - Single Faced: 54"W x 30"D x 36"H, with Doors
- 9D • Shell - Double Faced: 54"W x 48"D x 36"H, with Doors

(Removeable Tote Sizes - 12"W x 17"D x 3"H, 12"W x 17"D x 6"H)

Basis of Design

KI, Ruckus Collection Work Table

Colors

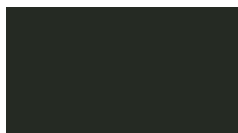
- Shell: Flannel
- Table Top: - Butcher Block - 1 3/4" thick- self edge

Top: Plastic Laminate



Satin Stainless Steel
Plastic Laminate

Shell: Steel



FN Flannel

10 – SCIENCE LAB TABLES

Description

Premium science table with a non-glare molded solid epoxy top that is impervious to normal lab chemicals, heat and moisture. Eco-friendly and chemical-resistant UV finish.



Construction

- Meets AWI Premium Grade Standard
- Top: 1" Epoxy – Black
- Solid red oak construction
- 2-1/4" square legs bolted to 4-1/2"H x 13/16" Thick plain apron
- 13 gauge steel corner braces
- Adjustable glides
- Black rubber leg boots

Size

10A. 60"W x 24"D x 30"H

10B. 72"W x 24"D x 30"H

Basis of Design

10A. Diversified Spaces Oak Science Table Plain Apron 60"W x 24"D x 30"H – P7606K30N

10B. Diversified Spaces Oak Science Table Plain Apron 72"W x 24"D x 30"H – P7606K30N

Colors

- Top: 1" Epoxy – Black
- Red Oak table, clear urethane finish

Vendor: Lee Company

2023 Furniture Standards

11A - Lab Stools

Description

Heavy-duty stools ideal for science and art rooms. Built with an 18-gauge steel tube frame and securely welded to a 14" diameter seat pan.

Construction

- **Frame:** 7/8" O.D. 18-gauge steel tubing.
- **Seat:** Full 14" diameter with 11-1/2 diameter masonite board recessed into the pan with 8 rivets and will not chip or crack.
- **Foot Ring:** 5/8" O.D. is welded to each leg by four contact points at each leg for added rigidity.
- **Glides:** Non-marring polypropylene glides.



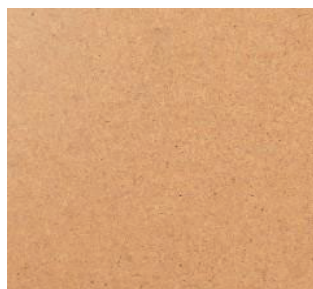
Sizes

11A • 18" Height Fixed Height 14" Diameter x 18"H Model# 6218-10

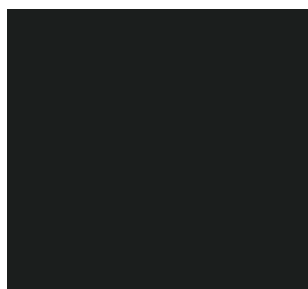
Colors

- Seat Color: Masonite
- Frame Color: Black

Masonite



Black



Manufacturer

National Public Seating

Vendor

Sharp School Services, Inc.

Tippecanoe School Corporation

2023 Furniture Standards

11B

11B - Adjustable Height Lab Stool

Description

Heavy-duty, adjustable height stool ideal for science and art rooms. Built with an 18-gauge steel tube frame and securely welded to a 14" diameter seat pan. Legs adjust from 24-1/2" to 32-1/2".

Construction

- **Frame:** 7/8" O.D. 18-gauge steel tubing.
- **Seat:** Full 14" diameter with 11-1/2" diameter masonite board recessed into the pan with 8 rivets and will not chip or crack.
- **Foot Ring:** 5/8" O.D. is welded to each leg by four contact points at each leg for added rigidity.
- **Glides:** Non-marring polypropylene glides.



Sizes

11B • 24.5" - 32.5" Adj. Height 14"Dia. x 24-1/2" - 32-1/2" H Model# 6224H-10

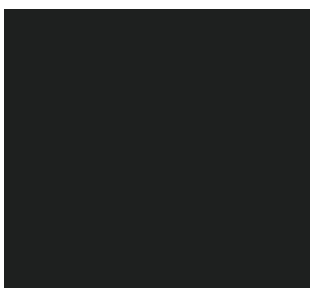
Colors

- Seat Color: Masonite
- Frame Color: Black

Masonite



Black



Manufacturer
National Public Seating

Vendor
Sharp School Services, Inc.

12 – Teacher Sit Stand Desks

All Levels

Description

Rectangular Sit Stand Tables with a T-Leg base. Standard electric switch with 2 buttons: One Raises, One lowers the surface height.



12a.



12b.

Construction

- 3 Stage height adjustable legs
- HPL Laminate Worksurface
- 3mm Edge Band

Size

12a. 24”d x 66”w x height adj height

12b. Shallow Pencil Drawer

Basis of Design

A. HON Coordinate Adjustable Height Table HHATW2466CT.LAHD.LOFT.X.P + HHATB3S2LT.P71.S.UD

Colors

- Leg Paint: Platinum
- Laminate: Handspun Dove
- Edge: LOFT

Vendor: Lee Company

13 — TEACHER DESK STORAGE

Description

Steel pedestal desk storage with box/file drawer configuration.



Construction

- Extra thick, low profile steel case
- Pedestal drawers with 9" (box) and 12" (file) drawers
- Standard linear or square pull options
- Designer white accessory tray
- Core removable lock

Size

13. 15"W x 19"D x 21"H

Basis of Design

Hon Fuse Storage Pedestals – HAPGBP199TFN.LPR6.P.P.DW.L

Colors

- Paint Color: Black



Black

- Accessory Tray: Designer White
- Linear Silver Pull

Vendor: Lee Company

14 – TEACHER LECTERN

All Grade Levels

Description

Teacher lectern with pneumatic height adjustment from 26-1/2" to 42-1/4". Steel base with four casters (two locking).



14a.



14b.

Construction

- High-pressure laminate top
- Single pneumatic lift column
- T-Mold edge band

Size

14A - 24"D x 36"W x 26-1/2"-42-1/4"H

14B – Storage Basket

Basis of Design

Moore Co Hierarchy Grow & Roll Desk – 59040-C-XXXX-XX

Colors

- Frame: Platinum
- HPL Top: North Sea
- T-Mold Edge: Platinum

Vendor: Lee Company

14 – TEACHER LECTERN - ALTERNATE

All Grade Levels

Description

Teacher lectern with pneumatic height adjustment from 26-1/2" to 42-1/4". Steel base with four casters (two locking).



14c.



14d.

Construction

- High-pressure laminate top
- Single pneumatic lift column
- T-Mold edge band

Size

14c 20"D x 27"W x 26"-41"H

14d – Storage Basket

Basis of Design

Smith System Silhouette Sit Stand Desk 01632 + Basket 76518

Colors

- Frame: Platinum
- Edge: Platinum
- HPL Top: North Sea

Vendor: Lee Company

15 – TEACHER CLASSROOM CHAIR

All Grade Levels

Description

Mid-back task chair with 3" thick seat cushion and mesh back. With arms and armless.



Construction

- Swivel-tilt control
- 5-Star poly base with hard casters
- Adjustable lumbar
- Height & Width adjustable arms
- Weight rating 275lbs

Size

15A Armless. 27-1/2"D x 27-3/4"W x 42"H, 19" seat depth and seat to floor height 15-3/4"-20"

15B With Arms. 27-1/2"D x 27-3/4"W x 42"H, 19" seat depth and seat to floor height 15-3/4"-20"

Basis of Design

HON Convergence Mid-Back Task Chair – 15a. HCT1MM.Z1.N.H.M.CU10.AL.SB.T (armless)

15b. HCT1MM.Z1.A.H.M.GR1.AL.SB.T (arms)

Colors

- Frame: Black
- Fabric: Centurion Black
- Mesh Back: Black

Vendor: Lee Company

16 – CAFETERIA TABLES

Description

One of the easiest lifting tables on the market. Torsion bars and torsion spring work together to provide long-lasting lift assistance. One of the easiest lifting tables on the market. Standard height for door clearance – Our table's easily clear standard 7' door frames. Center legs provide additional load bearing capacity. Holds up to the rigors of the school environment.



Construction

- The tabletop shall be constructed of 5/8" thick particleboard with average density of 45 P.C.F.
- .028" phenolic backer is bonded to the bottom of the table core for stability / moisture resistance.
- Self-supporting, MIG welded, unitized frame design uses 14-gauge 1" and 1-1/4" profile 2" high, 14-gauge "C"-shaped aprons provide maximum top clearance.
- Stool seats are molded from high-impact polypropylene and are a 13" quadrangular shape. Stools are mounted directly on a 6" square 11-gauge steel plate.

Size

16a. 60"w x 96"l x 29"h – 8 Stools

16b. 60"w x 120"l x 29" h – 12 Stools

16c. 60"w x 140"l x 29"h – 16 Stools

16d. 60"w x 140"l x 29"h – 12 Stools – stool spacing for high school

Basis of Design

Palmer Hamilton – 16a. 59TV13293008-08, 16b. 59TV13293010-12, 16c. 60T11293012-S16

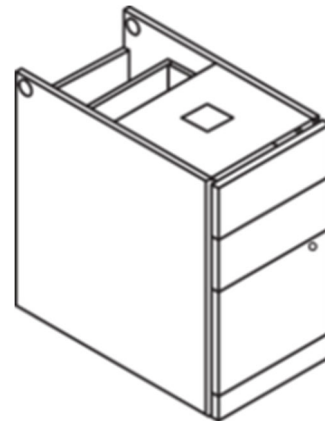
Colors

- Frame: Black
 - Edge: Black
 - Laminate Top: Shadow Zephyr 4857-60
- Vendor: Lee Company

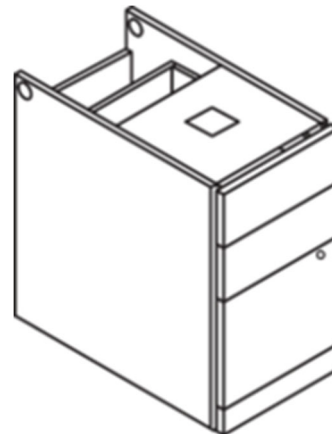
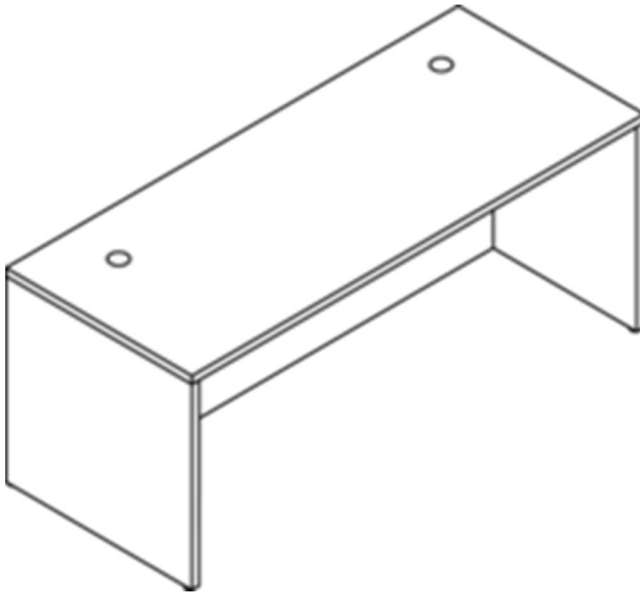
17 – ADMINISTRATION – OFFICE DESKS

Description

Sleek design with clean edges and solid construction. The HPL laminate top is surrounded by a 90 degree 3mm edge band for a long lasting use. Five-sided box drawers on ball bearing slides allow easy use.



17a.



17b.



17c.



17d.



17e.



17f.



17h.



17i.



17j.

Construction

- Scratch, stain and spill-resistant surface over durable 1 1/8" solid core high performance particleboard
- European-designed fastening system – Precision, metal-to-metal, fasteners eliminate need for external cleats or exposed screws; enables tops or end panels to be interchanged or replaced
- 5-sided drawer construction for added strength and easy alignment or replacement of drawer fronts
- Inner frame constructed using mortise and tenon joinery for superior structural strength and precisely positioning/
securing the pedestal to the modesty panel; endures frequent moving/handling; ensures a longer product life cycle

Size

- 17a. 30"w x 60l x 29"h
- 17b. 30"w x 72"l x 29"h
- 17c. 48"w x 24"d
- 17d. 36"w x 24"d
- 17e. 48"w x 24"d
- 17f. 36"w x 24"d
- 17h. 72"w x 24"d
- 17i. 66"w x 16"d x 36"h
- 17j. 72"w x 16"d x 36"h

Basis of Design

Manufacturer – HON 10500 Series

- 17a. H10578.COGN + H105062.COGN
- 17b. H10592.COGN + H105062.COGN
- 17c. H10561.COGN
- 17d. H105680.COGN
- 17e. H10570.COGN
- 17f. H105599.COGN
- 17h. H105492.COGN
- 17i. H10533.COGN
- 17j. H10534.COGN

Colors

- Laminate: Cognac COGN

Vendor: Lee Company

18 – ADMINISTRATION SIT-STAND DESKS

Description

Rectangular Sit Stand Tables with a T-Leg base. Standard electric switch with 2 buttons: One Raises, One lowers the surface height.



18A AND 18B.

Construction

- 3 Stage height adjustable legs
- HPL Laminate Worksurface
- 3mm Edge Band

Size

18A. 24" d x 66" w x height adj height + 48" x 14" MODESTY PANEL

18B. 24" d X 72" w X height adj height + 54" x 14" MODESTY PANEL

Basis of Design

18A. HON Coordinate Adjustable Height Table HHATW2466CT.COGN.COGN.S.P + HHATB3S2LT.P71.S.UD +HLS4814L.COGN

18B. HON Coordinate Adjustable Height Table HHATW2472CT.COGN.COGN.X.P + HHATB3S2LT.P71.S.UD + HL4814L

Colors

- Leg Paint: Black
- Laminate: Cognac COGN
- Edge: Cognac COGN

Vendor: Lee Company

19 — ADMINISTRATION DESK STORAGE

Description

Steel pedestal desk storage with box/file drawer configuration.



Construction

- Extra thick, low profile steel case
- Pedestal drawers with 9" (box) and 12" (file) drawers
- Standard linear or square pull options
- Designer white accessory tray
- Core removable lock

Size

19. 15"W x 19"D x 21"H

Basis of Design

Hon Fuse Storage Pedestals – HAPGBP199TFN.LPR6.P.P.DW.L

Colors

- Paint Color: Black



Black

- Accessory Tray: Designer White
- Linear Silver Pull

Vendor: Lee Company

20 – ADMINISTRATION – CONFERENCE TABLES

Description

Sleek design with clean edges and solid construction. The HPL laminate top is surrounded by a 90 degree 3mm edge band for a long lasting use. Five-sided box drawers on ball bearing slides allow easy use.



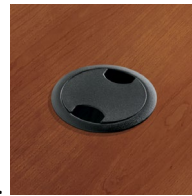
20A.



20E.



20F.



20G.

Construction

- Scratch, stain and spill-resistant surface over durable 1 1/8" solid core high performance particleboard
- European-designed fastening system – Precision, metal-to-metal, fasteners eliminate need for external cleats or exposed screws; enables tops or end panels to be interchanged or replaced

Size

20a. 72"l x 36"w x 30"h

20b. 96"l x 48"w x 30"h

20c. 120"l x 48"w x 30"h

20d. 144"l x 48"w x 30"h

20e. Power Only - HGRMTAC

20f. Power and USB - HGRMTUSB2

20g. Grommet Only - HFLDGRMT3

Colors

Laminate: Cognac COGN

Edge: Edge: Cognac COGN

Basis of Design

20a, 20b, 20c, 20d HON – Preside Conference Tables

Vendor: Lee Company

21 — ADMINISTRATION – CONFERENCE CREDENZAS

Description

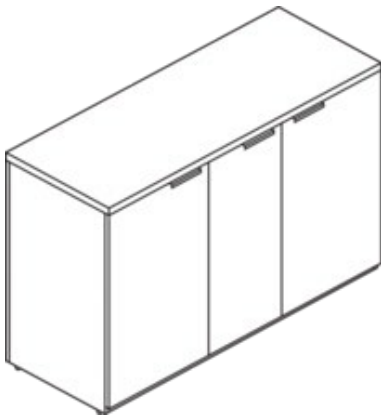
Sleek design with clean edges and solid construction. The HPL laminate top is surrounded by a 90 degree 3mm edge band for a long lasting use. Five-sided box drawers on ball bearing slides allow easy use.



21a.



21b.



21d.

Construction

- Scratch, stain and spill-resistant surface over durable 1 1/8" solid core high performance particleboard
- European-designed fastening system – Precision, metal-to-metal, fasteners eliminate need for external cleats or exposed screws; enables tops or end panels to be interchanged or replaced

Size

21a. 20"d x 36"w x 29"h

21b. 20"d x 42"w x 36"h

21d. 20"d x 57"w x 36"h

Colors

Laminate: Cognac COGN

Paint: Black

Basis of Design

HON – 10500 Preside Series

Vendor: Lee Company

22 – SUPPLEMENTAL TABLES – OFFICE AND CONFERENCE

Description

Flexible flip n nest tables. HPL Laminate tops with a 3mm edge band for durability. Caster for easy movement.



22.

Construction

- 1 1/8" thick solid core top is made from durable high-performance particleboard.
- Heavy-grade, warp-resistant particleboard tops and bases withstand heavy activity.
- Mobile nesting base option lets tables fold up and roll away until you need them

Size

22. 24"d x 60"w x 29"h

Basis of Design

HON Huddle Flip n Nest Table – 22. HMT2460G.N.COGN.COGN + HMBFLIP24L.C.P

Colors

- Laminate: Cognac COGN
- Paint: Black

Vendor: Lee Company

23 – Administration Conference Chair

Description

Mid-back task chair with 3" thick seat cushion and mesh back. With arms and armless.



Construction

- Swivel-tilt control
- 5-Star poly base with hard casters
- Adjustable lumbar
- Height & Width adjustable arms
- Weight rating 275lbs

Size

23A Armless. 27-1/2"D x 27-3/4"W x 42"H, 19" seat depth and seat to floor height 15-3/4"-20"

23B With Arms. 27-1/2"D x 27-3/4"W x 42"H, 19" seat depth and seat to floor height 15-3/4"-20"

Basis of Design

HON Convergence Mid-Back Task Chair – HCT1MM.Z1.N.H.M.CU10.AL.SB.T (armless) OR
HCT1MM.Z1.A.H.M.CU10.AL.SB.T (arms)

Colors

- Frame: Black
- Fabric: Centurion Black CU10
- Mesh Back: Black

Vendor: Lee Company

24 – FILE STORAGE

Description

Steel Lateral Filing Cabinet



24a.



24b.



24c.

Construction

- Heavy-duty steel ball-bearing drawer suspensions operate easily and quietly
- Built-in counterweight stabilizes the cabinet when a drawer is opened
- Double-walled base keeps the cabinet frame aligned for years of reliable service
- Full radius pull matches Flagship pedestals, file centers and towers
- Leveling glides compensate for uneven floors

Size

24a. 36" w x 18" d x 28" h

24b. 36" w x 18" d x 39" h

24c. 36" w x 18" d x 52" h

Basis of Design

HON Flagship Lateral Filing System

Color

Frame: Black

Vendor: Lee Company

25 – BOOKCASES STATIONARY

Description

Steel bookshelves.



25a.

Construction

- Welded construction far outlasts the build-it-yourself construction of most similar cabinets
- Clean, straightforward design complements panel-based workstations and metal desks
- Precision-formed steel for strength and durability
- Extra shelves available for added capacity

Size

25a. 34" w x 12" d x 29" h

25b. 34" w x 12" d x 41" h

25c. 34" w x 12" d x 59" h

25d. 34" w x 12" d extra shelf

Basis of Design

HON Brigade Steel Book Shelves

Colors

- Paint: Black

Vendor: Lee Company

26 — Mobile Bookcases

Description

Double sided wood bookshelves. Starter and adder units



Construction

- $\frac{3}{4}$ " thick 7 layer Northern-grown oak hardwood, Cornice tops with 2 1/8" fascia
- Tops - Individual high-pressure laminate banded to $\frac{3}{4}$ " 3-ply 45# density particleboard, Low-glare finish
- Shelves - $\frac{3}{4}$ " thick glued-up Northern-grown oak hardwood, adjustable shelves are grooved 11/32" dia half round on underside to set firmly on 1" long, 5/16" dia threaded shelf pins
- Mobility: Qty 4 reinforced 14ga corner brackets with 2 1/2" heavy duty swivel casters attached to the bottom of the end panel and the base facing
- Each unit will have a partition back made of 5-ply furniture grade veneered plywood

Size

26A. 42 Starter: 42"H x 37 3/16"W x 24"D

26B. 42 Starter/Adder: 42"H x 73 3/8"W x 24"D

26C. 48 Starter: 48"H x 37 3/16"W x 24"D

26D. 48 Starter/Adder: 48"H x 73 3/8"W x 24"D

26E. 60 Starter: 60 1/2"H x 37 3/16"W x 24"D

26F. 60 Starter/Adder: 60 1/2"H x 73 3/8"W x 24"D

Basis of Design

Brodart Furniture

Colors

Finish: Solar Oak

Vendor: Lee Company

27 — NURSE OFFICE RECOVERY BED

Description

Nurse office recovery bed.



27.

Construction

- Innerspring construction with 2" thick fire-retardant foam to reduce sagging
- Upholstered with Advanced BeautyGard which contains agents effective against bacterial and fungal micro-organism in a selection of 25 latex-free flame resistant *Naugahyde colors. Naugahyde is a product of Uniroyal Engineered Products, LLC.
- Mildew and oil resistant.

Size

27.72"l x 24"w x 19.5"h

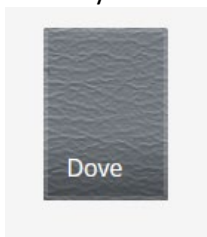
Basis of Design

WMC Products 8302 Recovery Couch with Fixed Headrest

Colors

Vinyl: Dove Grey

Vendor: Lee Company



28 – LGI Table and Cart

Description

A heavy duty ABS Plastic Training Table designed for durability but also being lightweight for flexibility.



28A.



28B.

Construction

- Tops are constructed of a honeycomb structural core. Exterior, top, and bottom are thermoformed ABS plastic permanently bonded to the honeycomb.
- PVS plastic molded edge is permanently bonded to the ABS exterior
- Legs are constructed of 14 gauge x 1 ¼" square tubing

Size

18'd x 60"w x 29"h

Basis of Design

28A. AMTAB TT185DL Dynalite ABS Plastic Training Table

28B. AMTAB TTC6 – ALTERNATE 60" Heavy Duty Table Cart for 8-10 Tables 60" width

Colors

Frame: Black

Plastic Top: Gray ABS

Vendor: Lee Company

29 – Administration Task Chair

Description

Low-back task chair with upholstered seat cushion and mesh back., with arms.



Construction

- Pneumatic
- Swivel tile
- Tilt back height adjustable
- Black mesh back
- Height & width adjustable arms
- Weight rating 300lbs

Basis of Design

HON Ignition Low-Back Task Chair – HITL1.A.H.M.CU10.T.SB

Colors

- Frame: Black
- Fabric: Centurion Black CU10
- Mesh Back: Black

Vendor: Lee Company