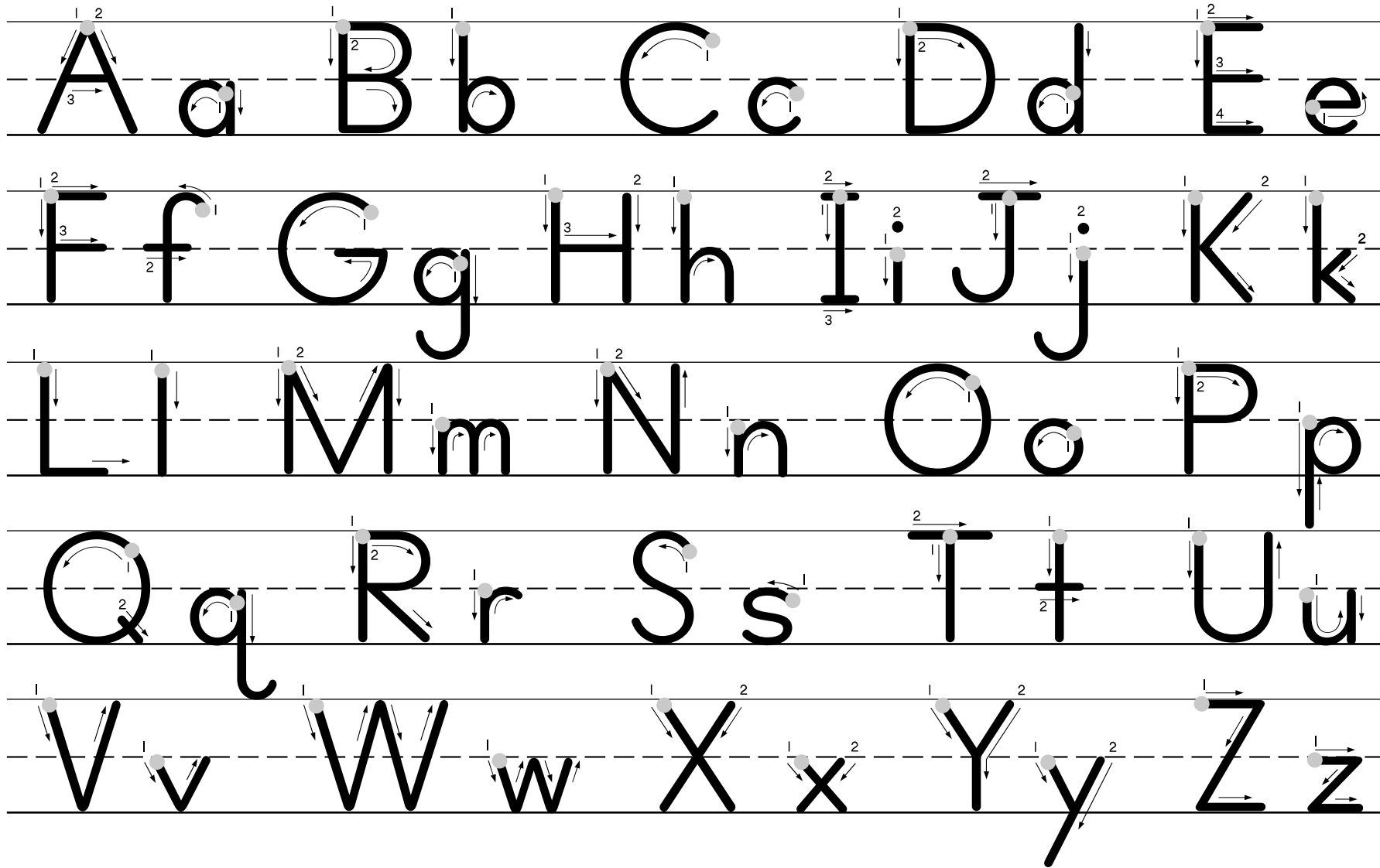
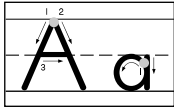


Name _____



© Macmillan/McGraw-Hill

Stroke Directions



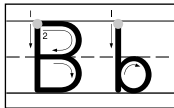
Capital A

- Begin at the top line.
- Slant left down to the bottom line. Lift.

- From the starting point, slant right down to the bottom line. Lift.
- Connect the slant lines at the middle line by moving across from left to right.

Small a

- Begin just below the middle line.
- Curve around left to the middle and bottom lines; continue up to the middle line.
- Move straight down to the bottom line.



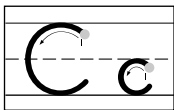
Capital B

- Begin at the top line and move straight down to the bottom line. Lift.

- From the starting point, curve around to the right and close at the middle line.
- Again, curve around to the right and close at the bottom line.

Small b

- Begin at the top line and move straight down to the bottom line.
- Retrace up, then curve around to the right, touching the middle and bottom lines as you make a small circle.



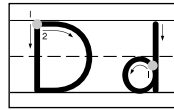
Capital C

- Begin just below the top line.
- Curve around to the left and down to the bottom line.

- Continue curving up right and stop short (just above the bottom line).

Small c

- Begin just below the middle line.
- Curve around to the left and down to the bottom line.
- Keep curving up right and stop short.



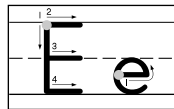
Capital D

- Begin at the top line and move straight down to the bottom line. Lift.

- From the starting point, curve around right and close at the bottom line.

Small d

- Begin just below the middle line.
- Curve around to the left touching the middle and bottom lines.
- Continue curving up right and move straight up to the top line.
- Retrace down to the bottom line.



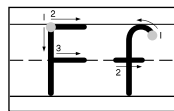
Capital E

- Begin at the top line and move straight down to the bottom line. Lift.

- Touch the starting point; move across to the right. Lift.
- Touch the middle; move across to the right. Lift.
- Touch the bottom; move across to the right.

Small e

- Begin halfway between the middle and bottom lines; move across from left to right.
- Curve up left, then around and down to the bottom line.
- Continue curving up right and stop short.



Capital F

- Begin at the top line and move straight down to the bottom line. Lift.

- Touch the starting point; move across to the right. Lift.
- Touch the middle; move across to the right.

Small f

- Begin just below the top line.
- Curve around left touching the top line, then move straight down to the bottom line. Lift.
- At the middle line, cross the letter by moving from left to right.



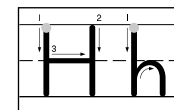
Capital G

- Begin just below the top line.
- Curve around to the left and down to the bottom line.
- Continue curving up right to the middle line.

- Move across to the left. Stop short.

Small g

- Begin just below the middle line.
- Curve around to the left, touching the middle and bottom lines as you make a small circle.
- From the middle line, pull down through the bottom line to the top of the next row.
- Curve left and stop short.



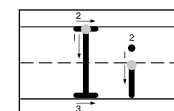
Capital H

- Begin at the top line and move straight down to the bottom line. Lift.

- To the right of the starting point, make another straight line from top to bottom. Lift.
- Connect the straight lines at the middle by moving across from left to right.

Small h

- Begin at the top line and move straight down to the bottom line.
- Retrace up, curve right, touching the middle line, then move down to the bottom line.



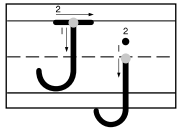
Capital I

- Begin at the top line and move straight down to the bottom line. Lift.

- At the top line, move across from the left of the starting point to the right. Lift.
- At the bottom line, move across left to right.

Small i

- Begin at the middle line and move straight down to the bottom line. Lift.
- Put a dot above the letter.



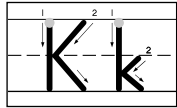
Capital J

- Begin at the top line, move straight down to the bottom line.
- Curve up left and stop short. Lift.

- At the top line, move across from left to right.

Small j

- Begin at the middle line and pull down through the bottom line to just above the next row.
- Curve left and stop short. Lift.
- Put a dot above the letter.



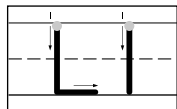
Capital K

- Begin at the top line and move straight down to the bottom line. Lift.

- From the right of the starting point, slant left down to the middle line.
- Continue from the middle line and slant right down to the bottom line.

Small k

- Begin at the top line and move straight down to the bottom line. Lift.
- From the middle line, slant left down to halfway between the middle and bottom lines.
- Slant right down to the bottom line.



Capital L

- Begin at the top line and move straight down to the bottom line.
- At the bottom line, move across from left to right.

Small l

- Begin at the top line.
- Move straight down to the bottom line.



Capital M

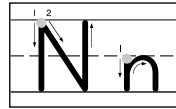
- Begin at the top line and move straight down to the bottom line. Lift.

- From the starting point, slant right down to the bottom line.
- Slant right up to the top line.

- Move straight down to the bottom line.

Small m

- Start at the middle line and move straight down to the bottom line.
- Retrace up, curve right, touching the middle line, then move down to the bottom line.
- Again, retrace up, curve right, touching the middle line, and move down to the bottom line.



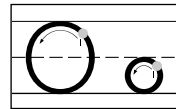
Capital N

- Begin at the top line and move down to the bottom line. Lift.
- From the starting point, slant right down to the bottom line.

- Move straight up to the top line.

Small n

- Begin at the middle line and move straight down to the bottom line.
- Retrace up, curve right, touching the middle line, then move down to the bottom line.



Capital O

- Begin just below the top line.
- Curve up around to the left and down to the bottom line.

- Continue curving up and close at the starting point.

Small o

- Begin just below the middle line.
- Curve up around to the left and down to the bottom line.
- Continue curving up and close at the starting point.



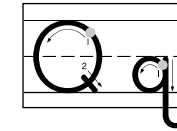
Capital P

- Begin at the top line and move straight down to the bottom line. Lift.
- From the starting point, curve around to the right.

- Close at the middle line.

Small p

- Begin at the middle line and pull down straight through the bottom line to the top of the next row.
- Retrace up and curve around to the right, touching the middle and bottom lines as you make a small circle.



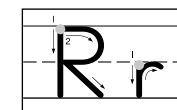
Capital Q

- Begin just below the top line and curve around to the left and down to the bottom line.
- Continue curving up and close at the starting point. Lift.

- From inside the circle just above the bottom line, slant right down to the bottom line.

Small q

- Begin just below the middle line; curve around to the left, touching the middle and bottom lines and continuing up to the middle line.
- Pull down through the bottom line to the top of the next row.
- Curve right and stop short.



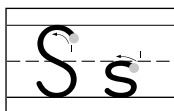
Capital R

- Begin at the top line and move straight down to the bottom line. Lift.

- From the starting point, curve around to the right and close at the middle line.
- Slant right down to the bottom line.

Small r

- Begin at the middle line and move straight down to the bottom line.
- Retrace up, curve right and touch the middle line.
- Stop just below the middle line.



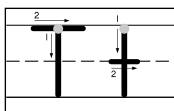
Capital S

- Begin just below the top line.
- Curve around left down to the middle line.

- Curve around right down to the bottom line.
- Curve up left and stop short.

Small s

- Begin just below the middle line.
- Curve around to the left down to halfway between the middle and bottom lines.
- Curve around right to the bottom line.
- Curve up left and stop short.



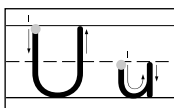
Capital T

- Begin at the top line and move straight down to the bottom line. Lift.

- At the top line, move across from the left of the starting point to the right.

Small t

- Begin at the top line and move straight down to the bottom line. Lift.
- At the middle line, cross the letter by moving across from left to right.



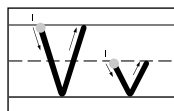
Capital U

- Start at the top line and move straight down.
- Curve right, touch the bottom

line, and continue up to the top line.

Small u

- Start at the middle line and move straight down.
- Curve right, touch the bottom line, and continue up to the middle line.
- Retrace down to the bottom line.



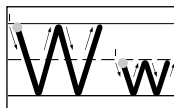
Capital V

- Begin at the top line.
- Slant right down to the bottom line.

- Slant right up to the top line.

Small v

- Begin at the middle line.
- Slant right down to the bottom line.
- Slant right up to the middle line.



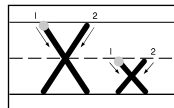
Capital W

- Begin at the top line; slant right down to the bottom line.
- Slant right up to the top line.

- Again, slant right down to the bottom line.
- Slant right and move up to the top line.

Small w

- Begin at the middle line; slant right down to the bottom line.
- Slant right up to the middle line.
- Again, slant right down to the bottom line.
- Slant right up to the middle line.



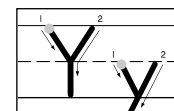
Capital X

- Begin at the top line.
- Slant right down to the bottom line. Lift.

- Touch the top line to the right of the starting point.
- Slant left and cross the letter by moving down to the bottom line.

Small x

- Start at the middle line; slant right down to the bottom line. Lift.
- Touch the middle line to the right of the starting point.
- Slant left and cross the letter by moving down to the bottom line.



Capital Y

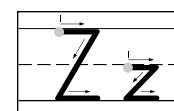
- Begin at the top line and slant right down to the middle line. Lift.

- From the right of the starting point, slant left down to the middle, touching the other line.

- Continue moving straight down to the bottom line.

Small y

- Begin at the middle line; slant right down to the bottom line. Lift.
- From the right of the starting point, slant left down through the top line of the next row, touching the other line as you pass.



Capital Z

- Begin at the top line and move across from left to right.

- Slant left down to the bottom line.

- At the bottom line, move across from left to right.

Small z

- Begin at the middle line and move across from left to right.
- Slant left down to the bottom line.
- At the bottom line, move across from left to right.