



**ROCKFORD BOARD OF EDUCATION  
INVITATION FOR BID ON SUPPLIES, MATERIALS, EQUIPMENT OR SERVICES  
FOR SCHOOL DISTRICT NO. 205  
ROCKFORD, ILLINOIS**

IFB No.        **24-39 CCEC Data Center Renovations**

DATE:         **March 27, 2024**

RE:            **ADDENDUM NO. 2**

---

To All Bidders:

Included are modifications, clarifications and/or corrections for the Project Manual and are hereby made a part of the contract documents. Please attach this addendum to the Project Manual(s) in your possession. Please note the receipt of this addendum on the bid form. Bidders shall review changes to all portions of this work as changes to one portion may affect the work of another.

**If you plan to hand deliver your IFB submission on the due date, please note you must check in on the 1st floor prior to coming to the bid opening. Please allow time for this as late submission will not be accepted.**

Refer all questions relative to the business aspect, Instructions to Bidders, Special Conditions, and questions concerning the technical aspect of the documents to the Director of Purchasing by email at [purchasingdeptstaff@rps205.com](mailto:purchasingdeptstaff@rps205.com).

ROCKFORD BOARD OF EDUCATION

By: Dane Youngblood  
Director of Purchasing

## **ADDENDUM TWO**

RLJA Project No.: **23-088**  
RPS Bid #: **24-39**

Date: **March 27, 2024**

Subject: **CHANGES to the BIDDING DOCUMENTS**

Project: **CCEC DATA CENTER RENOVATION PROJECT FOR  
ROCKFORD PUBLIC SCHOOL DISTRICT #205  
ROCKFORD, ILLINOIS**

Bids Due: **2:00PM, THURSDAY, APRIL 2, 2024**

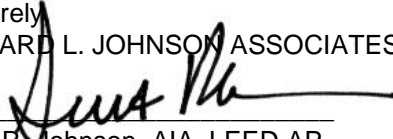
From: **ARCHITECT: RICHARD L. JOHNSON ASSOCIATES, INC.  
4703 CHARLES STREET  
ROCKFORD, IL 61108**

To: **ALL PROJECT DOCUMENT HOLDERS**

Please reproduce this Addendum as needed and attach to the Project Manuals for the above project.

Bidders shall indicate receipt of this and all Addenda in the space provided on the Bid Form. Failure to do so may be sufficient cause to reject the bid.

Sincerely,  
RICHARD L. JOHNSON ASSOCIATES, INC.

  
\_\_\_\_\_  
Scott R. Johnson, AIA, LEED AP

This Addendum consists of:  
Pages 1 thru 3.  
See Revised 24" x 36" Drawings T600.

**NOTE:** Wherein this Addendum conflicts with the original Project Manual and Drawings, this Addendum shall govern.

# **CHANGES to the PROJECT MANUAL**

## **SPECIFICATION SECTION 230900**

**ADD** 1.9 B as follows:

- 1.B.** Extend existing systems (compatible with Owner's existing control system):
- 1)
  - 2) Extend existing Niagara system for this project as required per building with JACE communicating to the District-wide system. Existing control components connected to the existing DDC control system that remain outside the scope of this project within the buildings shall be integrated into the new system. Contractor shall coordinate the integration of the JACE with the Owner for connection to the District system, as this will be performed by the Owner.
  - 3) All controllers and accessories shall interface with the existing Tridium platform.
  - 4)
  - 5) Renumber subsequent sections accordingly.

**ADD** 1.15 as follows:

### 1.15 PREINSTALLATION AND CONTROLS TURNOVER MEETINGS

- 2.A.** Contractor shall have a preinstallation meeting per building with the Owner and other contractors prior to the installation of controls. Contractor to coordinate agenda with the Owner 14 days in advance of the meeting.
- 3.B.** Contractor shall have a Controls turnover meeting per building with the Owner and other contractors after controls installation and programming to verify point names, point actions and sequence of operations. Contractor to coordinate agenda with the Owner 14 days in advance of the meeting. The meeting shall include schedule of the turnover and any owner action items needed for the turnover at a minimum. The is in addition to training and other requirements within the spec.
- 6)
  - 7) Renumber subsequent sections accordingly.
  - 8)

**ADD** 2.1 as follows.

### 2.1 MANUFACTURERS

- 9) A. BACnet Protocol:
  - 10) 1. Distech Controls (by Technical Solutions) Tridium
  - 11)
  - 12) Renumber subsequent sections accordingly.

## **SPECIFICATION SECTION 271500**

**REVISE** 2.1A.9.b.1) to read: No other manufacturers will be accepted.

**DELETE** line 2.1A.9b.2)

- 13) Renumber subsequent sections accordingly.

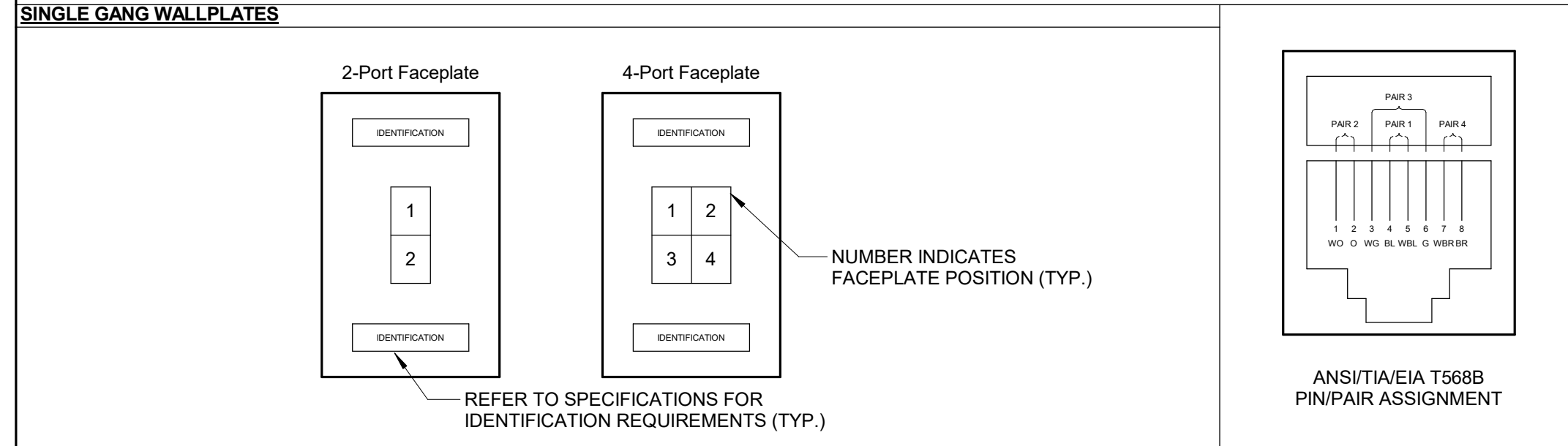
## **CHANGES to the DRAWINGS**

### **SHEET T600 – TECHNOLOGY SCHEDULES**

**REMOVE** alternate manufacturer information from Technology Equipment Schedule items SC-IO-C, SC-IO-W, AND SC-MPP-1 and add text NO SUBSTITUTION.

**END ADDENDUM NUMBER 2**

### INFORMATION OUTLET SCHEDULE



NOTES:  
 1. PROVIDE REMOVABLE BLANK INSERT(S) FOR ALL UNUSED PORTS.  
 2. REFER TO SPECIFICATIONS SECTION 27 05 53 FOR ADDITIONAL INFORMATION ON LABELING REQUIREMENTS.

SCHEDULE NOTES:  
 1. LOCATION OF FUTURE OR OWNER PROVIDED WIRELESS ACCESS POINT. PROVIDE A 20' SLACK COIL AT THE NEAREST CABLE SUPPORT FOR POSSIBLE RELOCATION AFTER WIRELESS SURVEY.

CONFIGURATION	FACEPLATE PORTS	FACEPLATE PORT IDENTIFICATION						NOTES
		POSITION 1 JACK TYPE	POSITION 2 JACK TYPE	POSITION 3 JACK TYPE	POSITION 4 JACK TYPE	POSITION 5 JACK TYPE	POSITION 6 JACK TYPE	
C1	2	DATA	BLANK					
C1-WAP	2	DATA	BLANK					1.
C4	4	DATA	DATA	DATA	DATA			

### TECHNOLOGY EQUIPMENT SCHEDULE

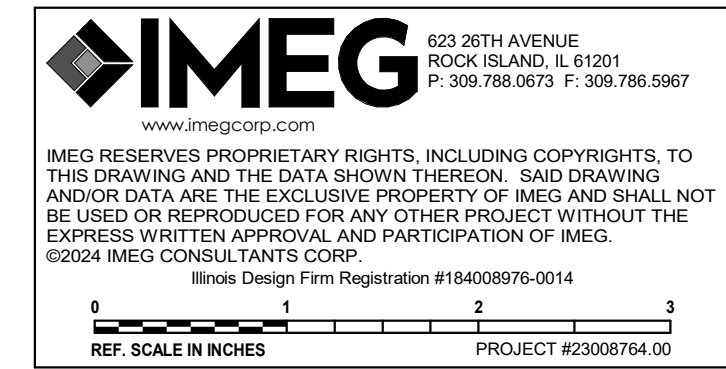
THE EQUIPMENT LIST ABBREVIATIONS AND THE TECHNOLOGY EQUIPMENT SCHEDULE ARE FOR THE CONVENIENCE OF THE CONTRACTOR. EACH CONTRACTOR SHALL BE RESPONSIBLE FOR VERIFICATION OF QUANTITIES AND SHALL FURNISH ALL MATERIAL REQUIRED, WHETHER SPECIFIED OR NOT, TO PRODUCE A SATISFACTORY WORKING SYSTEM.  
 CATALOG NUMBERS ARE NOT TO BE CONSIDERED COMPLETE BUT ARE GIVEN ONLY TO AID THE CONTRACTOR IN THE SEARCH FOR MATERIAL. NO MATERIAL SHALL BE ORDERED BY MANUFACTURER AND CATALOG NUMBER ONLY. EACH CONTRACTOR SHALL FIRST READ THE COMPLETE DESCRIPTION OF THE MATERIAL ON THESE DRAWINGS AND SPECIFICATIONS. THE FIRST MANUFACTURER LISTED IS THE BASIS OF DESIGN. "STANDARD COLOR" INDICATES FACTORY FINISH AVAILABLE AT NO ADDITIONAL CHARGE.

EQUIPMENT LIST ABBREVIATION	EQUIPMENT LIST DESCRIPTION	MANUFACTURER AND MODEL
AC-R1-W	CARD READER PROVIDED AS INTEGRAL PART OF SECURITY MANAGEMENT SYSTEM. REFER TO CONTROLLED SECURITY SCHEME (CSS) TYPE SCHEDULE ON T600 FOR ADDITIONAL INFORMATION. CARD READERS SHOWN ON PLANS TO IDENTIFY INTENDED MOUNTING LOCATION. REFER TO SPECIFICATION SECTION 28 13 00 FOR COMPLETE INFORMATION.	HID ICLASS SE RKL840 NO SUBSTITUTION
AC-SCP-1	SECURITY MANAGEMENT SYSTEM CONTROL PANEL. FOR USE WITH INTEGRATED SECURITY MANAGEMENT SYSTEM. REFER TO SPECIFICATION SECTION 28 13 00 FOR COMPLETE INFORMATION.	LENEL S2 NETBOX
IC-IS1-W	NETWORK VIDEO INTERCOM WITH SECURITY CAMERA, TWO-WAY COMMUNICATION AND REMOTE ENTRY CONTROL. ONVIF AND SIP COMPLIANT. PROVIDE INTEGRATION WITH ACCESS CONTROL SYSTEM. PROVIDE NETWORK CABLE. REFER TO COPPER RISER DIAGRAM 1/T500. COORDINATE INTERGRATION TO VIDEO SUREVILLANCE SYSTEM, ACCESS CONTROL SYSTEM, AND VoIP SYSTEM WITH OWENR.  PROVIDE WITH RECESSED MOUNT, WITH APPROPRIATE CABEL PATHWAY PER MANUFACTURES RECOMMENDATION, TO ABOVE ACCESSIBLE CEILING (AXIS T18202) AT +48" AFF. COORDINATE FINAL MOUNTING REQUIREMENTS AND LOCATION WITH ARCHITECT AND OWNER PRIOR TO PURCHASE AND INSTALLTION.	AXIS I8116E NO SUBSTITUTION
SC-HWM-1	SINGLE RACK UNIT HORIZONTAL WIRE MANAGER WITH COVER. PLASTIC MOLDED WITH PASS THROUGH HOLES, INTEGRAL BEND RADIUS CONTROL AND FINGERS WITH ROUND EDGES. HINGED COVER ALLOWING ACCESS TO CABLE PATHWAY. FITS 19" EIA RACK.	PANDUIT WMPLFSE COMMSCOPE BELDEN
SC-IO-C	INFORMATION OUTLET, WIRELESS ACCESS POINT, CEILING MOUNT, 2 PORT SURFACE MOUNT BOX AS INDICATED ON DRAWINGS.  *#* INDICATES INFORMATION OUTLET FACEPLATE CONFIGURATION AS INDICATED ON THE FLOOR PLANS. REFER TO SHEET T600 FOR INFORMATION OUTLET SCHEDULE FOR PIN CONFIGURATION. REFER TO 3/T400 FOR ABOVE CEILING INFORMATION OUTLE MOUNTING DETAIL.	COVERPLATE: PANDUIT CBX2WH-AY JACK: (CAT6A) C.JX88TGBU NO SUBSTITUTION
SC-IO-W	WALL MOUNTED INFORMATION OUTLET. INFORMATION OUTLET INCLUDES A FACEPLATE WITH JACKS IN A PREDEFINED CONFIGURATION.  *#* INDICATES INFORMATION OUTLET FACEPLATE CONFIGURATION AS INDICATED ON THE DRAWINGS AND THE INFORMATION OUTLET SCHEDULE ON T600.  INSTALL INFORMATION OUTLET IN A 4" SQUARE BACKBOX WITH A SINGLE GANG PLASTER RING. INSTALL 1.25" EMT CONDUIT TO ABOVE ACCESSIBLE CEILING. REFER TO 1/T400 FOR ROUGH-IN INFORMATION	COVERPLATE: PANDUIT CFPL2WHY JACK: (CAT6A) C.JX88TGBU NO SUBSTITUTION
SC-MPP-1	48-PORT MODULAR PATCH PANEL. INCLUDES PROVISIONS TO INSERT UP TO 48 MODULAR JACKS IN ANY CONFIGURATION WITH PORT IDENTIFICATION AND LABELING. MOUNTS DIRECTLY TO EIA/TIA STANDARD 19" RELAY RACK. PROVIDED WITH COLOR CODING AND LABEL HOLDER KITS. PROVIDE DATA JACKS FOR ALL UNUSED PORTS FOR FUTURE. REQUIRES (2) 1.75" RACK UNITS OF SPACE.	PANDUIT PANEL: CPPL48WBLY NO SUBSTITUTION
VS-CM-1	VIDEO SUREVILLANCE CAMERE, WALL MOUNT. IP BASED, 7MP RESOLUTIONM, 180-DEGREE FOV. 30FPS  INSTALL SINGLE-GANG BACKBOX WITH 1" CONDUIT STUBBED TO ABOVE ACCESSIBLE CEILING. PROVIDE MOUNTING BRACKETS, HARDWARE AND ACCESSORIES AS NEEDED FOR A COMPLETE INSTALLATION.	AXIS P3265-PVE NO SUBSTITUTION
VS-CM-2	VIDEO SURVEILLANCE CAMERA, CEILING MOUNT. IP BASED, 2 MP, VARIFOCAL.  INSTALL SINGEL-GANG BACK BOX WITH 1" CONDUIT STUBBED 6" BEYOND BACK BOX. PROVIDE MOUNTING BRACKETS, HARDWARE AND ACCESSORIES AS NEEDED FOR A COMPLETE INSTALLATION.	AXIS M4215-LV NO SUBSTITUTION

### CONTROLLED SECURITY SCHEME (CSS) TYPE SCHEDULE

1. ELECTRONIC DOOR HARDWARE SUCH AS ELECTRIC STRIKES, ELECTRIC LATCH RETRACTION, ETC. SHALL BE PROVIDED AND INSTALLED BY OTHERS.  
 2. REFER TO THE TECHNOLOGY EQUIPMENT SCHEDULE FOR CREDENTIAL READER TYPE INFORMATION.

DOOR #	ROUGH-IN ONLY	CREDENTIAL READER TYPE	CREDENTIAL READER OPERATES SINGLE DOOR	OPERATES MULTIPLE DOORS	AUTOMATIC DOOR OPERATOR	LOCKED BY EMERGENCY DURESS SEQUENCE	REMOTE UNLOCK VIA INTERCOM SYSTEM	REMOTE UNLOCK VIA PUSHBUTTON	INTRUSION DETECTION	REMOTE UNLOCK VIA FIRE COMMAND CENTER	VIDEO SURVEILLANCE	MOTION DETECTOR	LOCAL PUSHBUTTON DOOR HARDWARE OVERRIDE	INTERNAL ELECTRIFIED HARDWARE CONNECTION (BY OTHERS)	ELECTRONIC LOCKING HARDWARE (BY OTHERS)	MAG LOCK	LATCH STATUS DETECTION (BY OTHERS)	LOCAL ALARM HORN	MONITOR LATCH BOLT (BY OTHERS)	MONITOR DOOR POSITION SWITCH SPDT	MONITOR DOOR POSITION SWITCH DPDT	DELAYED EGRESS (BY OTHERS)	LOCAL 120VAC POWER SUPPLY	SCHEDULE BASED LOCKING	VISUAL STROBE/AUDIBLE ALARM	NOTES	
																											161A
161B	R1																										
163	R1																										
165A	R1																										
165B	R1																										
227	R1																										
228	R1																										



IMEG RESERVES PROPRIETARY RIGHTS, INCLUDING COPYRIGHTS, TO THIS DRAWING AND THE DATA SHOWN THEREON. SAID DRAWING AND/OR DATA ARE THE EXCLUSIVE PROPERTY OF IMEG AND SHALL NOT BE USED OR REPRODUCED FOR ANY OTHER PROJECT WITHOUT THE EXPRESS WRITTEN APPROVAL AND PARTICIPATION OF IMEG.  
 ©2024 IMEG CONSULTANTS CORP.  
 Illinois Design Firm Registration #184008976-0014  
 REF. SCALE IN INCHES PROJECT #23008764-00