

Student Transportation Plan Inclement Weather Days

March 26, 2024

Transportation Department

Agenda

- Transportation Operations
- Student Transportation Services
- Los Angeles County of Public Health Warnings
- Draft plan
- Considerations / Board Direction
- Questions



HLPUSD Transportation Operations as of 2023-24

- Board Approved Transportation Plan March 23, 2023
- Transportation Services Department
 - 19 School Bus Drivers, 4 Bus Attendants
 - 2 Transportation Dispatchers
 - 1 Secretary
 - 4 Heavy Line Mechanics
 - 1 Mechanic Supervisor
 - 1 Bus Driver Trainer
 - 1 Director of Transportation
- District Owned vehicle fleet
 - 38 School Buses, Average bus fleet age, 15 years
 - 4 Gasoline, 21 Diesel and 13 CNG
- 16 Daily Routes Supporting Students with IEP
- 3 Daily Routes Supporting General Education
- Approximately 455 Students with IEP enrolled
- Approximately 250 Students in General Education enrolled
 - Current Ride times range between 1 and 2 hours
- Additional Transportation support for Students in Foster Care and students who are Housing Insecure

110 White Fleet Support Vehicles



Student Transportation Services

- Transportation Services are provided as follows:
 - Transportation Services are provided for students with IEP, Foster Care, or who are Housing Insecure
 - Students in General Education shall be eligible for transportation service to and from school if the distance between their school-established bus stop and the school is beyond the minimum listed below:
 - **For elementary school students:**
 - Kinder: 1 mile
 - Grades 1-5: 1 ½ miles
 - **For middle school students:**
 - Grades 6-8: 2 miles
 - **For high school students:**
 - Grades 9-12: 3 miles



The Superintendent or designee may authorize transportation within the walking distance when safety problems or hazards exist.



Los Angeles County of Public Health Warnings

Inclement Weather Events in 2023 Data Provided by Student Family Services Dept.

- LA County of Public Health issues warnings when weather conditions are extreme and may affect outdoor activities
 - Excessive Heat Warnings
 - Flash Flood Warnings
- SFS reviews LA County of Public Health warnings and has issued 20 Excessive Heat Warnings for our district since July 1, 2023
- LA County has issued 7 flash flood warnings during the same period

- The Inclement Weather route plans on the following slides will focus primarily on our high school aged students as they have the longest recommended walk distance at 3 miles, during inclement weather events



DRAFT PLAN

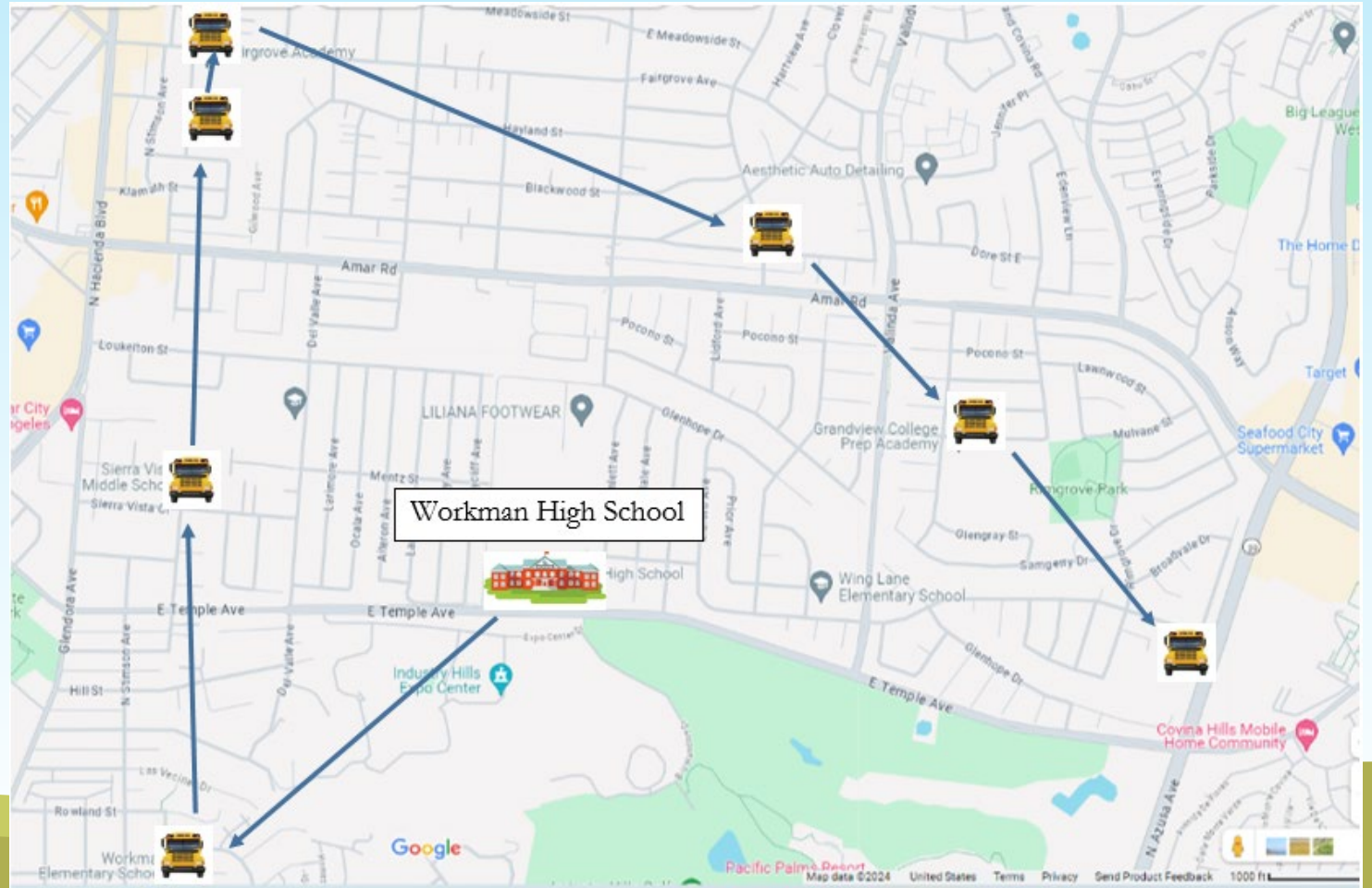
Workman High School

Bus Stops after Home-to-School Transportation



Workman High School (3:21 Bell)

- Workman High (4:00pm)
- Workman Elementary (4:05 pm)
- Sierra Vista (4:10pm)
- Fairgrove Academy (4:15pm)
- Baldwin (4:20pm)
- Valinda (4:30pm)
- Grandview(4:35pm)
- Wing Lane @ Azusa Ave. (4:40pm)



DRAFT PLAN

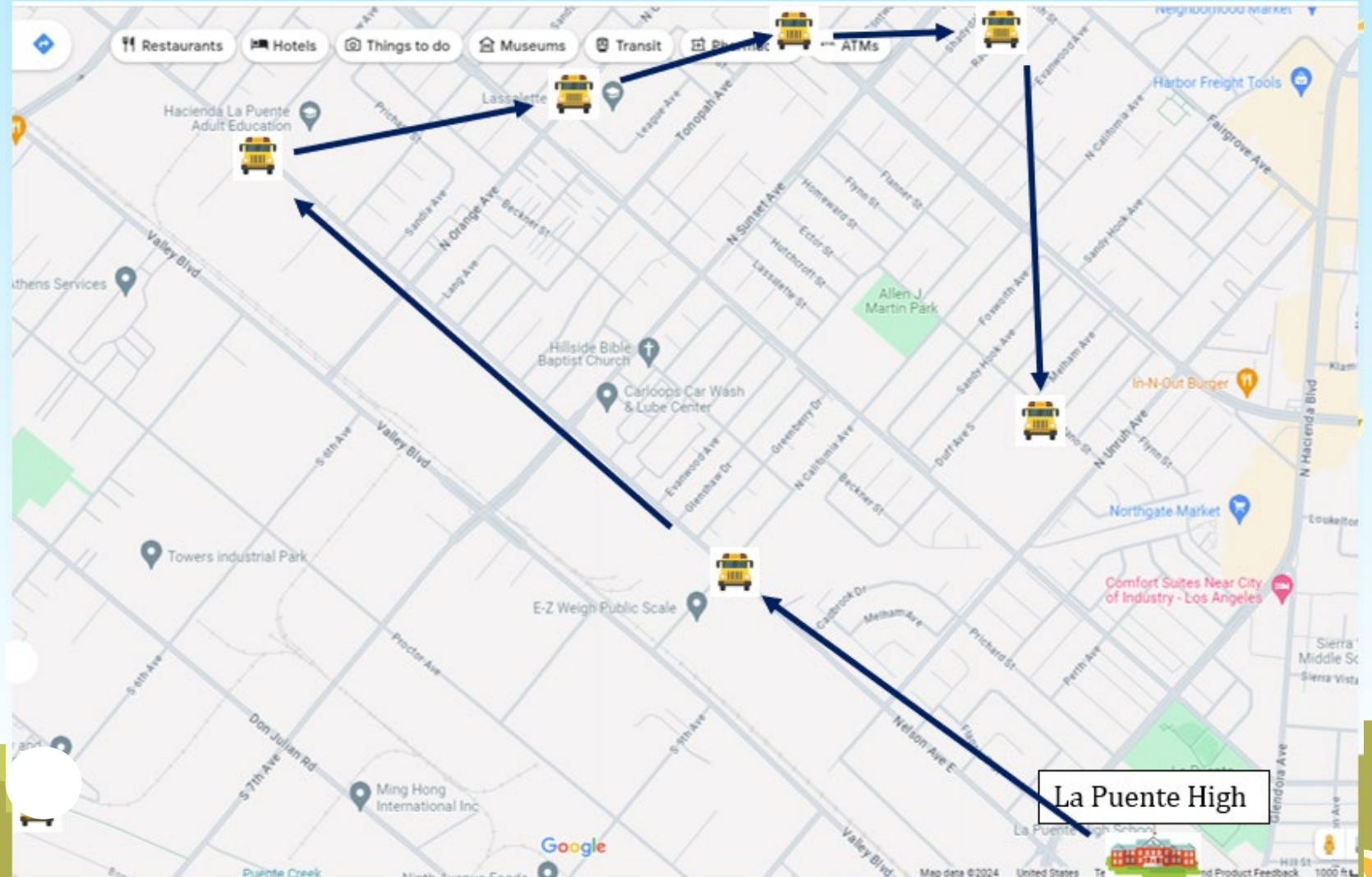
La Puente High School

Bus Stops after Home-to-School Transportation



La Puente High (3:30 Bell)

- La Puente High (4:00pm)
- Nelson (4:10pm)
- Willow (4:15 pm)
- Lassalette (4:20pm)
- California (4:25pm)
- California & Francisquito (4:30pm)
- Sparks Middle (4:40pm)



DRAFT PLAN

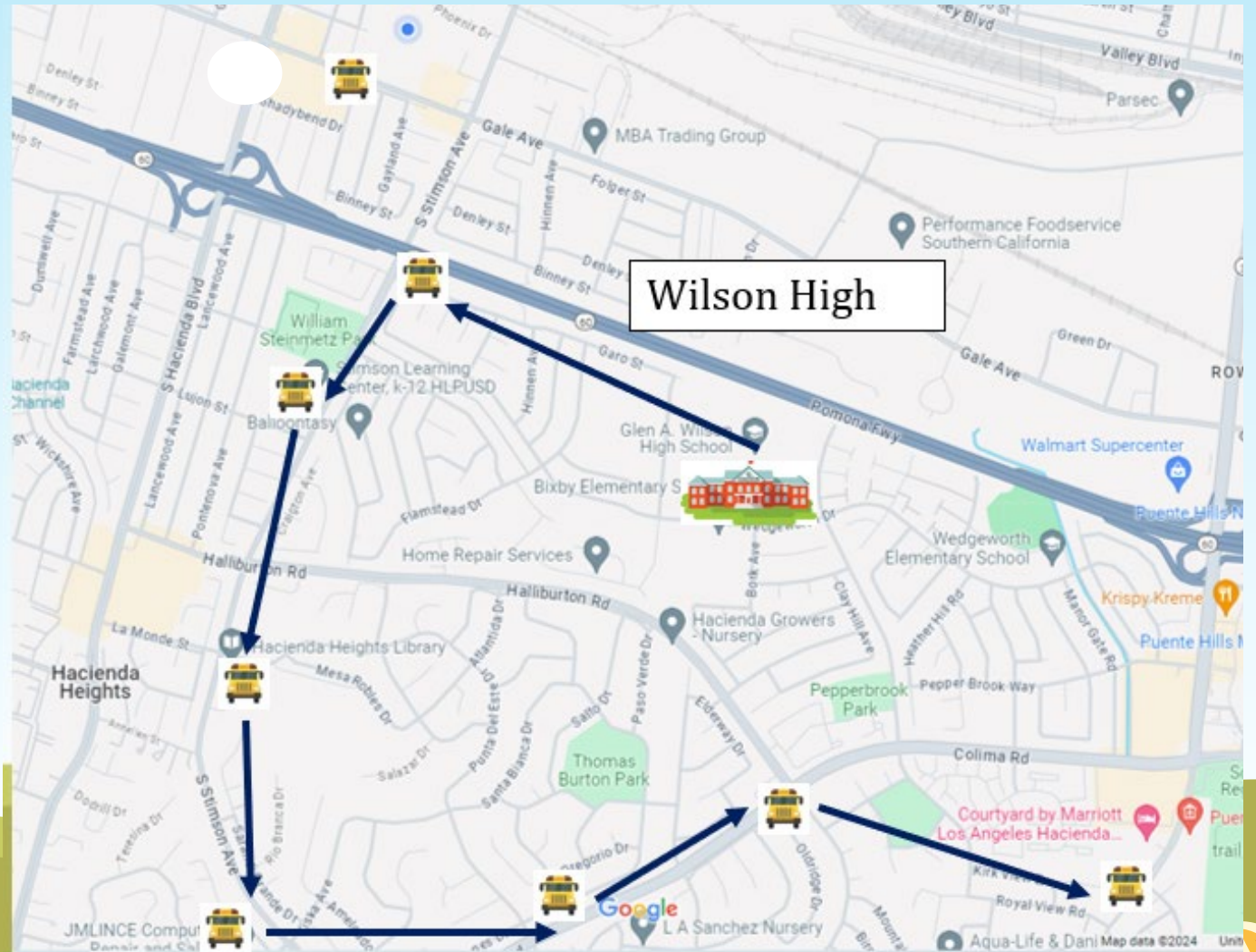
Wilson High School

Bus Stops after Home-to-School Transportation



Wilson High School (3:21 Bell)

- Wilson High (4:00pm)
- Glenelder Lot (4:10pm)
- Stimson (4:15pm)
- Mesa Robles (4:20pm)
- Grazide (4:25pm)
- Punta Del Este @ Rio Limpa (4:30pm)
- Dawn Haven @ Deertrail (4:35pm)
- Azusa @ Tomich RD (4:40pm)



DRAFT PLAN

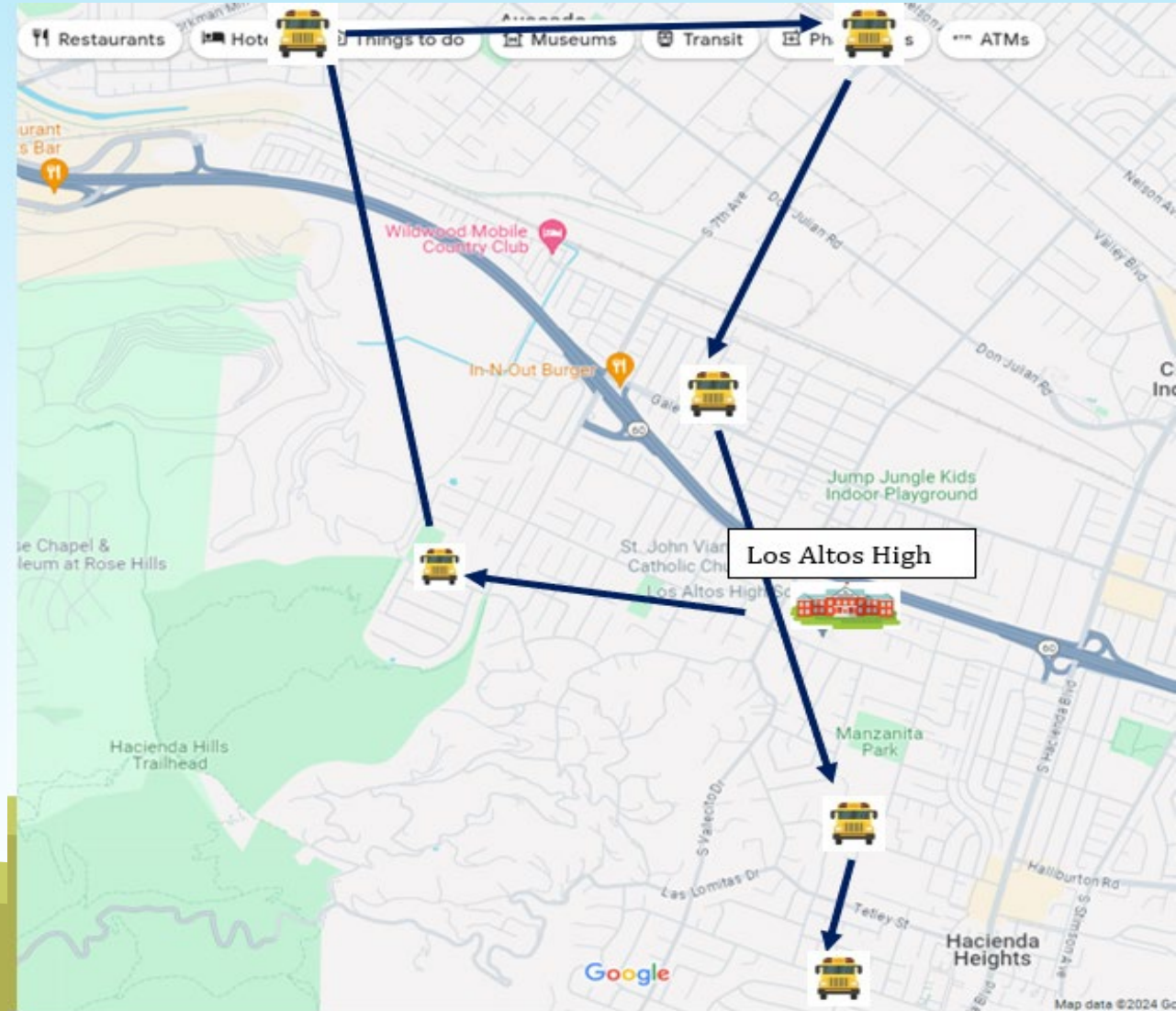
Los Altos High School

Bus Stops after Home-to-School Transportation



Los Altos High (3:21 Bell)

- Los Altos High (4:00pm)
- Orangegrove MS (4:10pm)
- 5th @ Lomitas (4:15pm)
- Valley Blvd @ 7th (4:20pm)
- Valley High School (4:25pm)
- Newton MS (4:35pm)
- Los Molinos (4:45pm)



Considerations/Direction

- Valley HS and Valley CDS currently receive daily school bus service to stops throughout the District
- This draft plan focuses on high school students. Younger age groups may require supervision at stops
- Student bus passes may be issued in the future to ensure accountability
- **Current Estimated Cost of this proposal:**
 - Approximately \$11 dollars per mile
 - Approximately \$130 per day, per bus, dependent on participation
 - Approximately \$15,000 per year based on 4 busses and 27 inclement weather days annually



Questions?

