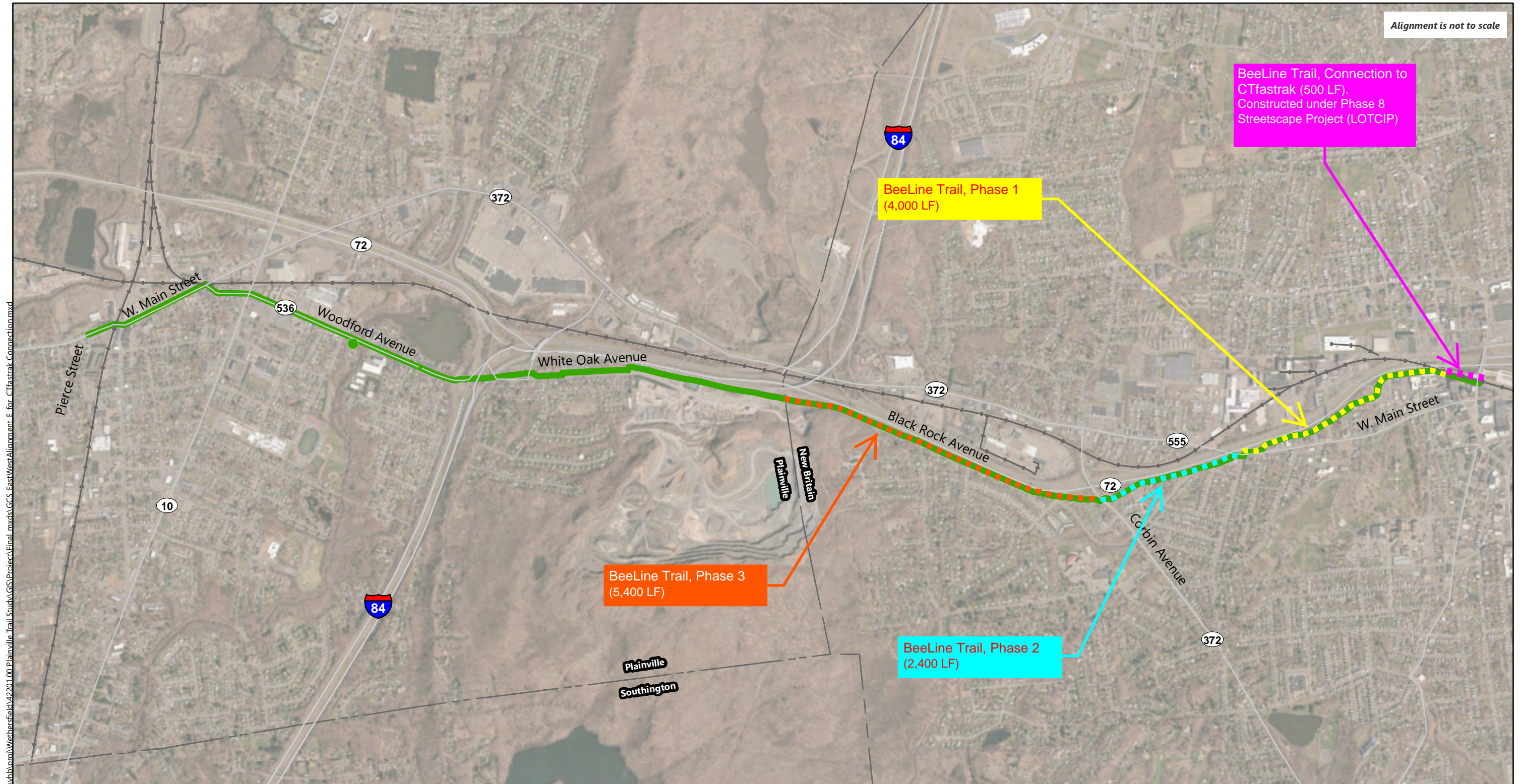
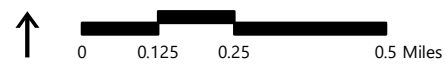


Alignment is not to scale



\\vhb\arc01\Weatherfield\42201.00.Plainville\_Trail\_Study\GIS\Project\Final\_mxd\GCS\_EastWest\Alignment E for CTfastrak\_Connection.mxd



- Town Boundary
- Active Rail
- Alignment E - 4.91 Miles - 92% Multi-Use

# LOCATION MAP

**Disclaimers:** The alignment shown is preliminary and not to scale. It is for planning purposes only. Alignments are subject to change as the planning study progresses. Labels represent potential options for the trail, should it be built. They do not represent a final design and are subject to change during the design process.

## Gap Closure Study

Hartford County, CT

### Project Statistics

- Alignment E is a proposed:
- 4.91 miles long,
- 10-12' wide,
- bituminous,
- 92% multi-use

### Alignment E - 4.91 Miles

Source Information: Map and Geographic Information Center - University of Connecticut, US Census Bureau  
 Service Layer Credits: Source: Esri, DigitalGlobe, GeoEye, Earthstar Geographics, CNES/Airbus DS, USDA, USGS, AeroGRID, IGN, and the GIS User Community