



INTRODUCTION to International School Basel



Mission

The Mission of the school is unique, perhaps the only school in the world that uses a student's voice to articulate its core values:

*“We all want to learn more;
We all do it in different ways;
We all have fun learning;
We all help.”*

- ISB STUDENT



Council of International
Schools



Authorized
International Baccalaureate
(IB) World School



IB Continuum



New England Association of
Schools and Colleges

11 Memberships

- Association for the Advancement of International Education
- Association for Music in International Schools
- College Board
- Duke of Edinburgh's International Award
- Educational Collaborative for International Schools
- Exam Board of the Royal Schools of Music
- International Schools Athletics Association
- International Schools Sports League
- Sports Council of International Schools
- Swiss Group of International Schools
- WIDA International School Consortium

Founded in
1979



1,380
students enrolled

3-19
age range of students

60+
nationalities represented

294
employees



Accessible
by tram



3 campuses located just a few minutes from
the city of Basel on the same tram line



3 Programme International
Baccalaureate School

325+

universities accepted ISB graduates since 2013

35

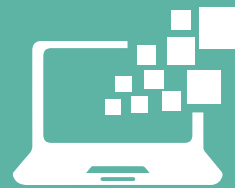
Average IB Diploma Programme Score

99%

IB Diploma Pass Rate

65+

IB courses offered



Learning Technology Department

8

Guidance and College Counsellors



English as an additional language



Intensive Needs Programme, Learning Support



> Students at ISB are encouraged to develop active, enquiring minds and effective lifelong learning skills in the context of a learning atmosphere grounded in mutual trust, dignity and respect.



> ISB embraces diversity, not only in race or culture, but in the learning profiles of our students.



> ISB understands that a curriculum must continue to evolve, respond and adapt to the changing world around us.



> An educational partnership exists between students, teachers and parents, ensuring that students enjoy an education beyond the purely academic and make full use of the opportunities created for them to develop emotionally, physically, creatively and socially.



20+

musical performances,
concerts and productions

10+

drama productions, plays,
performances



Visual Arts Exhibition,
artist workshops

37

Middle & Senior School
Athletic Teams

400+

students participating on an
athletics team each season

150+

ISBX Activities with 800+
students participating



Trips and Retreats:
Ski Camp, Charities, Cycle
Tour, Tanzania, South Africa,
Iceland, European trips



Supportive, active
parent groups



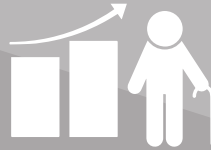
Partnerships and relationships
with local community, clubs,
activities and events



Average length
OF SERVICE 8yr



Professional Development opportunities, in-house, nationally and internationally



Generous pension plan contribution (75% ISB - 25% Employee)



Unemployment, Accident & Invalidity Insurance



Relocation Support



After-school child supervision free of charge



Tuition Benefit



Onsite fitness room



Staff sports & exercise classes



Social events

Supporting
German
lessons



- > Basel is located in the north-western part of the country, borders both France and Germany, and has access to both the Swiss Alps and the unique cultural regions found in this historically multilingual nation. The third largest city in Switzerland is a microcosm of the country as a whole.
- > Excellent continental and intercontinental travel links. The EuroAirport is accessible by car and bus, and provides easy access to international hubs located in Amsterdam, Frankfurt, London-Heathrow, Munich, Paris and Vienna.
- > Safe, reliable and comfortable integrated local public transport system.

- > Get involved in local community events: Fasnacht, Stadtlauf, Rhine swimming
- > Great for families with children: parks, playgrounds, zoos, indoor and outdoor swimming pools, extensive cycle routes, seasonal fairs and markets
- > Culture: historic centre
- > Culture: Museums and galleries. World-renowned art and commercial fairs
- > Cinemas, theatres, music venues
- > English-language widely spoken
- > Sports and recreation

*Interested in joining our inspirational team of educators?
Please contact our Human Resources department.*

ISB Human Resources

Fleischbachstrasse 2, 4153 Reinach BL, Switzerland

Email: recruitment@isbasel.ch

Phone: +41 61 715 33 33

www.isbasel.ch/work-at-isb

Directions

From Euroairport:

- > Take EuroAirport Bus 50 to the SBB (Basel Train Station)
- > Take BLT tram 11 towards Aesch
- > Exit at Reinacherhof stop

By train:

- > Take train to Basel SBB (Basel Train Station)
- > Walk to street level
- > Take BLT tram 11 towards Aesch
- > Exit at Reinacherhof stop