



# LOCKHART ISD Bond Oversight Committee

November 15, 2023



PowerPoint

# Agenda

Finance Update

Lockhart High School

Lockhart Elementary #6

Planning Update

Questions





# LOCKHART HIGH SCHOOL GROBREAKING

October 25<sup>th</sup>, 2023





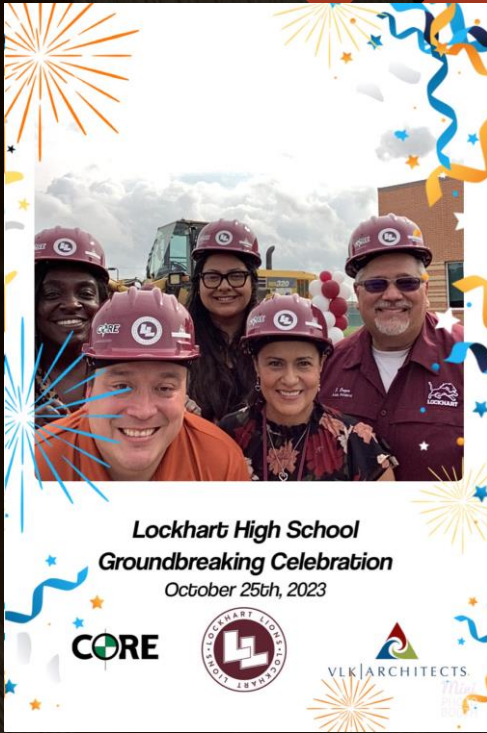
# Lockhart ISD Board of Trustees













# LHS Addition and Renovation Begins





# Project Schedules

## Lockhart HS Milestones:

Core Construction trade partner outreach — July 24, 2023  
Core Construction Bids Due — August 17<sup>th</sup>, 2023  
GMP Board Packet Due — August 22<sup>nd</sup>, 2023  
GMP Board Approval — August 28<sup>th</sup>, 2023  
Construction Substantial Completion — November 27<sup>th</sup>, 2024

## Lockhart ES #6 Milestones:

50% Construction Documents Due — August 23<sup>rd</sup>, 2023  
Early Equipment Purchasing Package Due — September 6<sup>th</sup>, 2023  
90% Construction Documents Due — September 29<sup>th</sup>, 2023  
100% CD Quality Control Review — October 11<sup>th</sup> thru October 20<sup>th</sup>, 2023  
100% Construction Documents Due — November 3<sup>rd</sup>, 2023  
Drymalla Bidding and Negotiations — November 4<sup>th</sup> thru December 6<sup>th</sup>, 2023  
Construction Substantial Completion — May 30<sup>th</sup>, 2025





# Lockhart Elementary #6

We went for Board approval on a early bid package on 10-23-2023

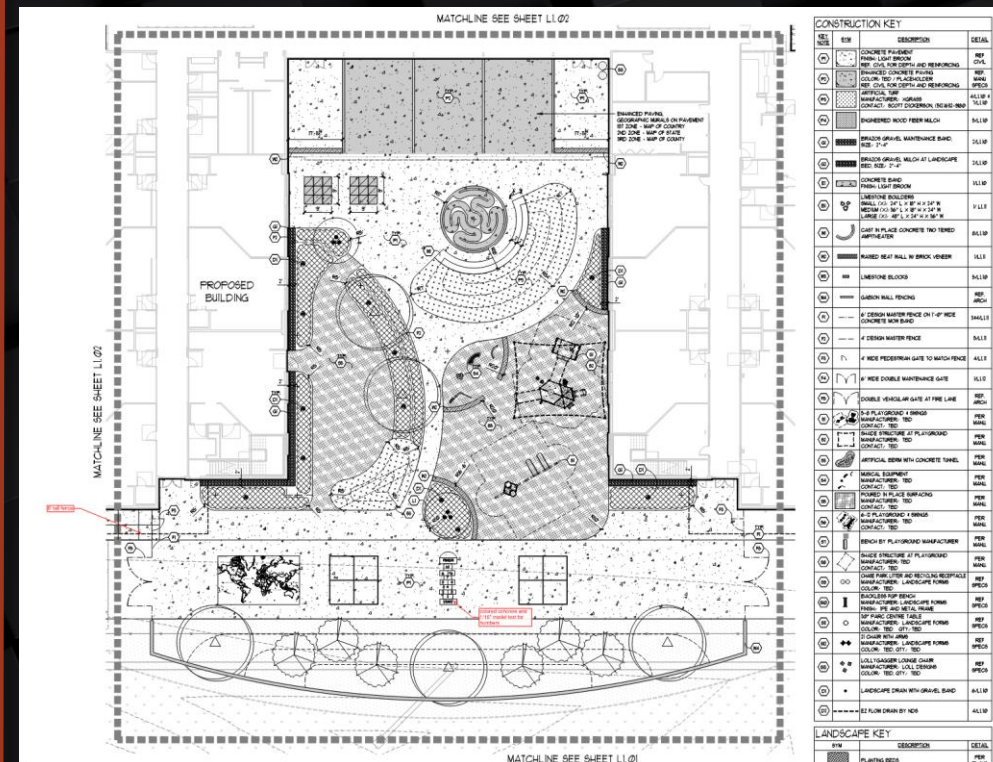
Lockhart Elementary School #6 Early Package 1 HVAC and Electrical	TOTAL VALUE BASE PROPOSAL
Itemized Statement of the Guaranteed Maximum Price	
September 25, 2023	\$ 1,095,492
Description	Value
Division 1 - General Requirements	\$ 16,646
Division 23 - HVAC Early Pkg 1 - Equipment Procurement	\$ 635,000
Division 26 - Electrical Early Pkg 1 - Equipment Procurement	\$ 51,450
Allowance - HVAC Equipment Upgrade	\$ 300,000
CM Contingency	\$ 21,910
Owner's Contingency	\$ 21,910
Total Cost of the Work	\$ 1,046,916
General Conditions	\$ 19,787
Construction Phase Fee	\$ 28,790
<b>Guaranteed Maximum Price</b>	<b>\$ 1,095,492</b>





# Lockhart Elementary #6

- The New Elementary #6 went out for bid on November 4<sup>th</sup> after a long process of plan review and engineering.
- Drymalla will be the General Contractor on this project. They will be looking to use local sub-contractors on this project too.
- Right now we are currently on track to be on budget with this project.







We are working through the budget for the New Elementary School #6. As we get closer to the final documents we will be doing some final adjustments.



### New Elementary School - 650 Students

Lockhart Independent School District

Tuesday Mar 7, 2023

#### OPINION OF PROBABLE COST

Description		2019 Unit Cost BASELINE	
<b>Construction Cost</b>			
Building Construction	90,623 SF \$	345 \$	31,264,935
Program Contingency		0.0% \$	-
On-Site Contingency		2.5% \$	781,623
Off-Site Contingency Cost		2.5% \$	801,164
<b>Subtotal</b>		<b>\$</b>	<b>32,847,722</b>
<b>Contingency/Allowance</b>			
Owner's Betterment		3.0% \$	985,432
Contractor's Contingency		2.0% \$	656,954
<b>Subtotal</b>		<b>\$</b>	<b>1,642,386</b>
<b>Jurisdictional &amp; Professional Fees</b>			
(Includes costs, fees, tests and studies required to satisfy all governing authorities and codes)			
Site Survey, Subsurface Utility Engineering, Due Dilligence / Property Evaluation, Geotechnical Engineering, Architectural Engineering, TDLR / TAS / ADA Review and Inspection, Food Service Design, On-Site Civil Engineering, Material Testing, HVAC Test and Balance, Building Permit / Review and Inspections			
<b>Subtotal</b>		11% \$	<b>3,793,912</b>
<b>Fixtures, Furniture &amp; Equipment (FF&amp;E)</b>		6% \$	<b>2,069,407</b>
<b>Technology</b>		4.5% \$	<b>1,552,055</b>
		<b>MARCH 2023</b>	<b>\$ 41,905,482</b>
Inflation @ 10% per year			\$ 2,793,671
<b>PROJECT COST</b>		<b>NOVEMBER 2023</b>	<b>\$ 44,699,153</b>



# New Elementary School #6

## ELEMENTARY SCHOOL NO. 6

### SITE PLAN

#### TOTAL PARKING SPOTS

##### 120 Spaces

- 10 Bus Spaces
- 116 Parent Queing
- 60 Visitor Parking
- 60 Staff Parking

#### FRONT PARKING LOT



##### 176 Spaces

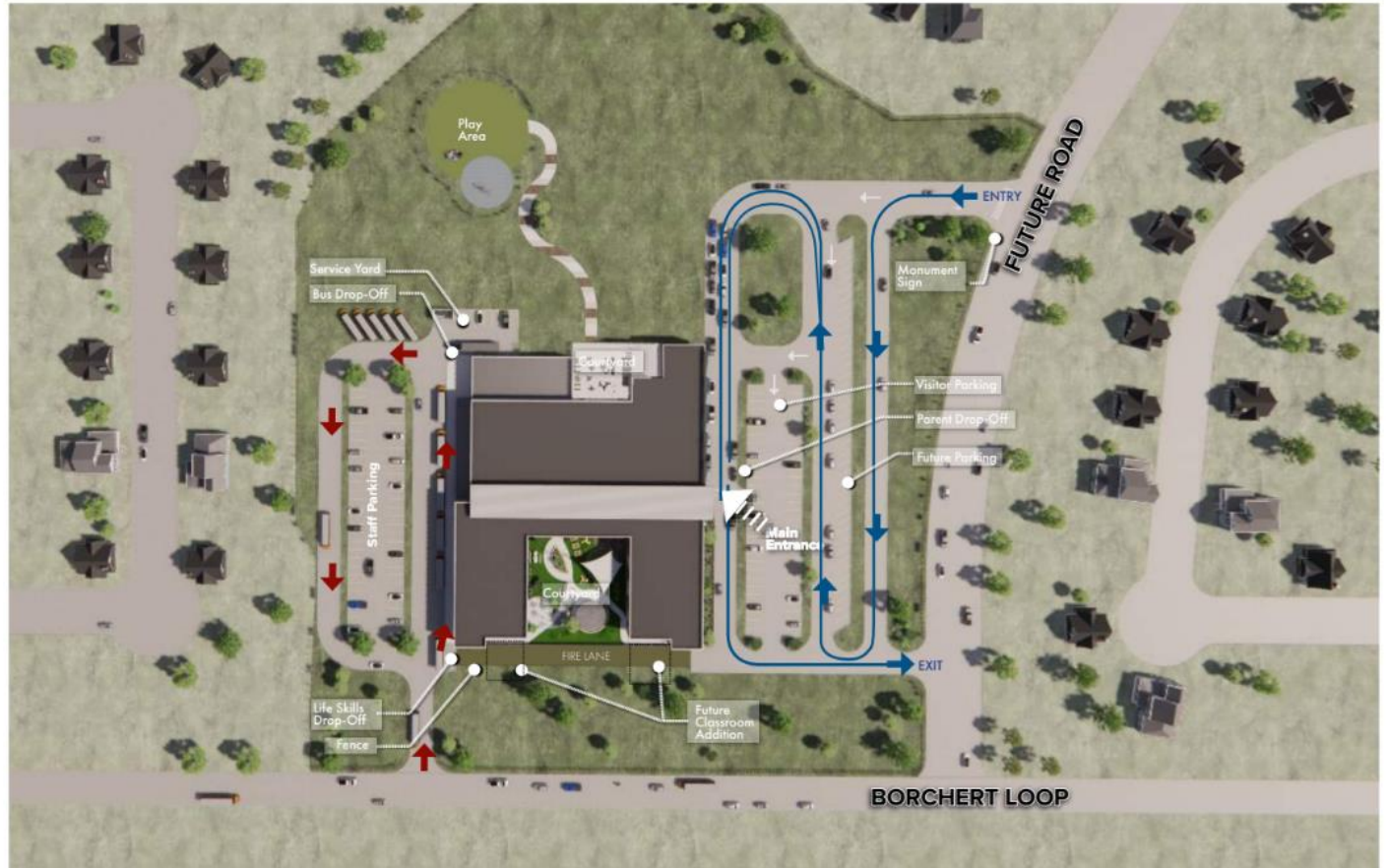
- 116 Parent Drop-Off
- 60 Parking Spots
- 40 Potential Parking

#### REAR PARKING LOT

##### 120 Spaces

- 120 Queing
- 60 Parking Spots
- 5 Bus Parking
- 5 Service Staff Parking

-  Bus Traffic Loop
-  Parent Traffic Loop

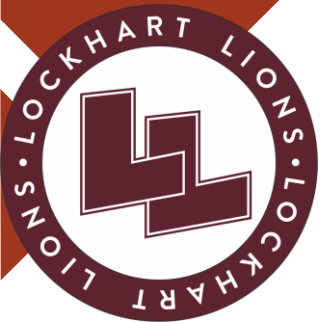




# New Elementary School #6 TCEQ Permitting

Update on the TCEQ issue:

- 11/8/2023 TCEQ Commissioners consider PFD at bi-monthly agenda meeting
- TCEQ Commissioners is to issue Final Order and Permit week of 11-13-2023





# New Elementary School #6

## ELEMENTARY SCHOOL NO. 6 FLOOR PLANS

### OVERALL BUILDING

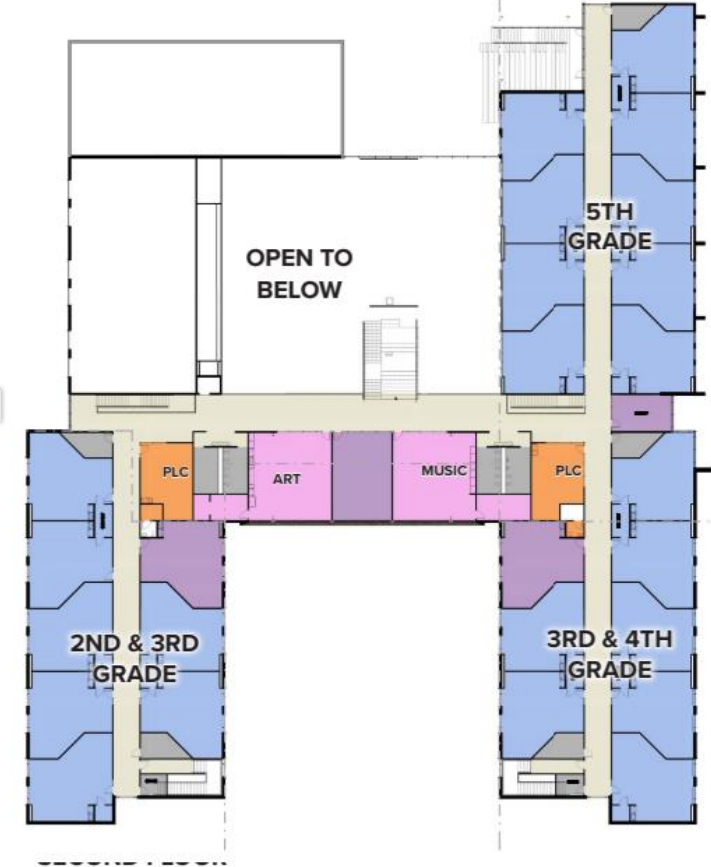
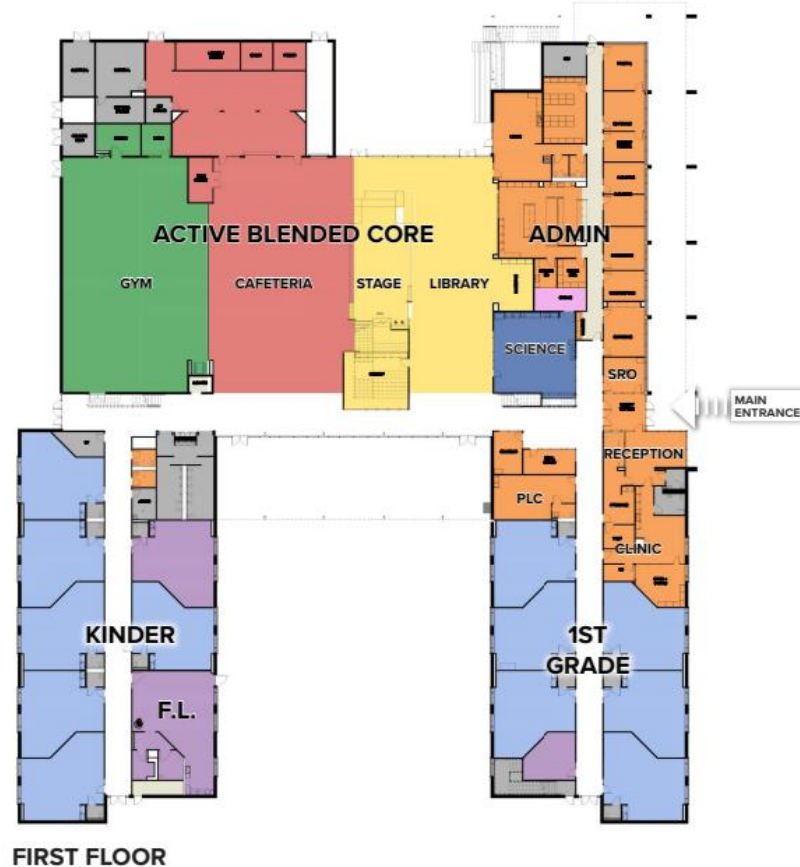
First Floor:  
**52,830 Sq. Ft.**

Second Floor:  
**38,060 Sq. Ft.**

Total Building:  
**90,890 Sq. Ft.**

### LEGEND

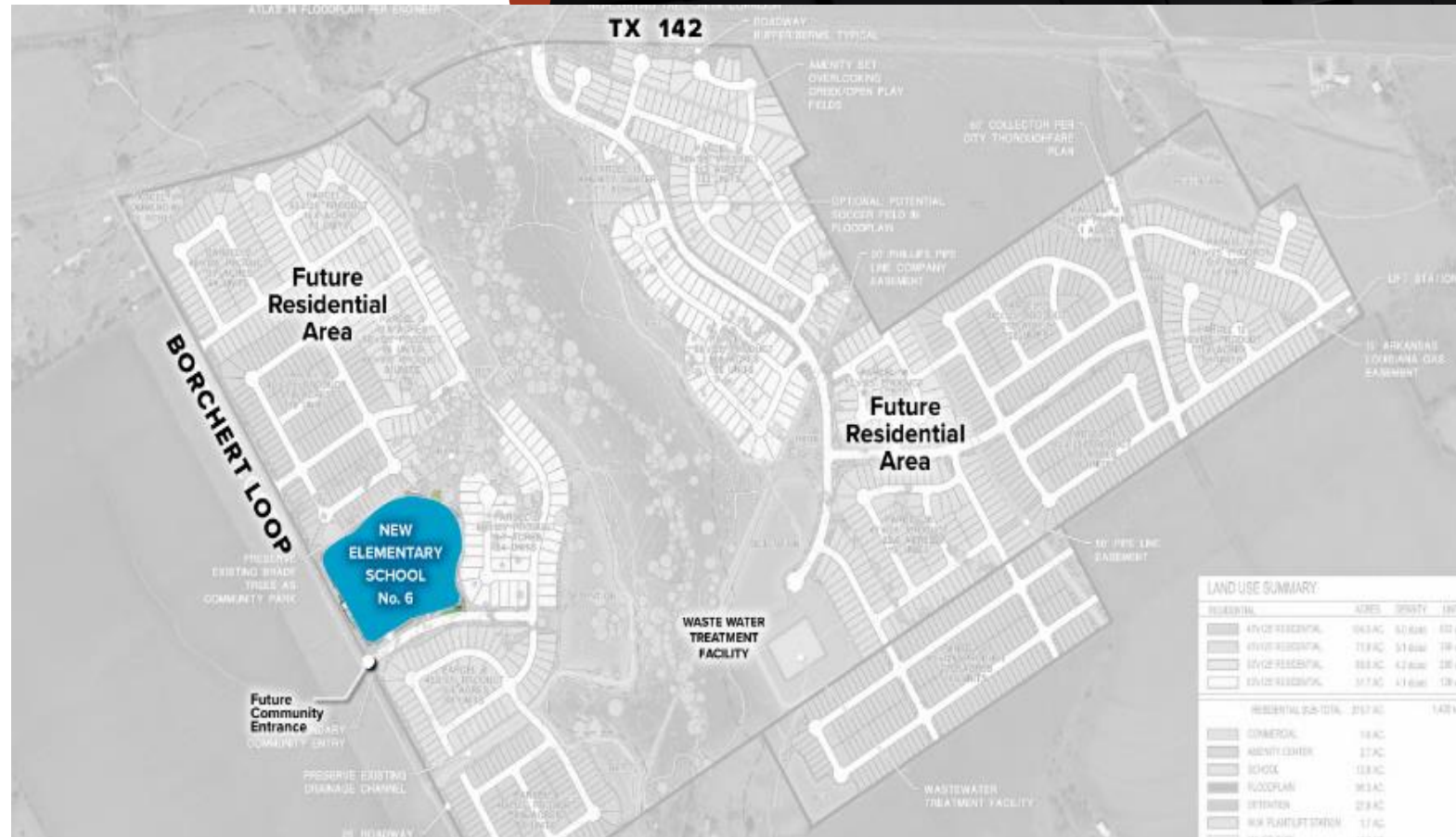
- ADMINISTRATION
- ATHLETICS
- CAFETERIA
- CIRCULATION
- CLASSROOMS
- FINE ARTS
- LIBRARY
- RESTROOMS AND SERVICE
- SCIENCE AND TECHNOLOGY
- SPECIAL EDUCATION



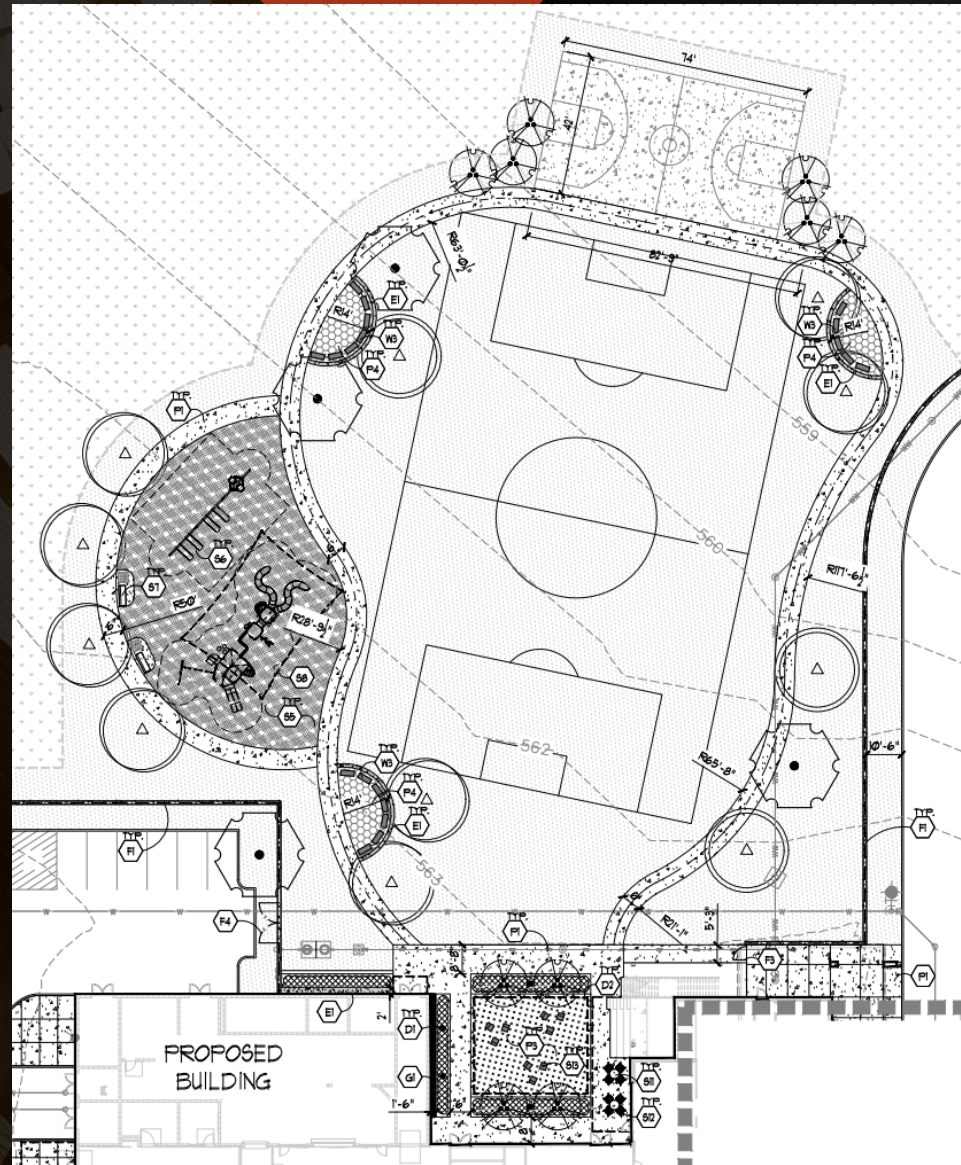


# New Elementary School #6

Design team has sent the TIA report and received comments. We will re-submit our reply to these commits and have a final plan by mid December.

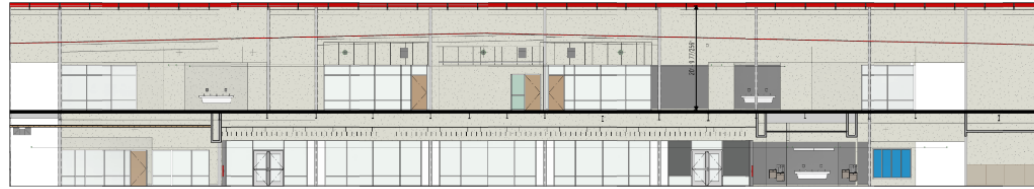




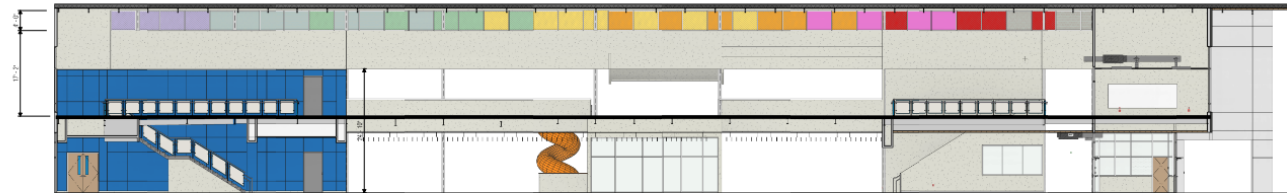




# New Elementary School #6



② Main Corridor - SOUTH  
SCALE: 1/8" = 1'-0"



① MAIN CORRIDOR - NORTH  
SCALE: 1/8" = 1'-0"



⑤ LIBRARY - EAST  
SCALE: 1/8" = 1'-0"



③ CAFETERIA/LIBRARY SOUTH  
SCALE: 1/8" = 1'-0"



④ CAFETERIA/LIBRARY - NORTH  
SCALE: 1/8" = 1'-0"



⑥ CAFETERIA - WEST  
SCALE: 1/8" = 1'-0"

