

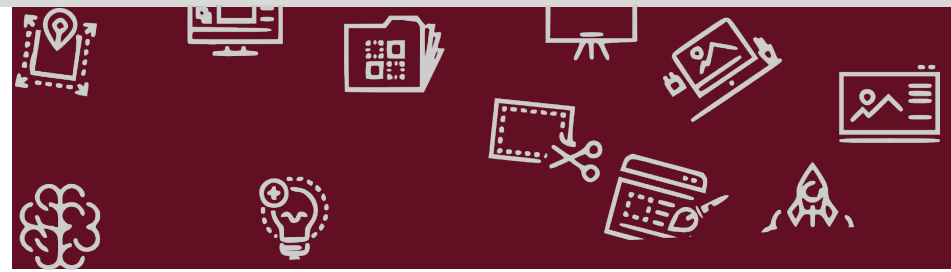
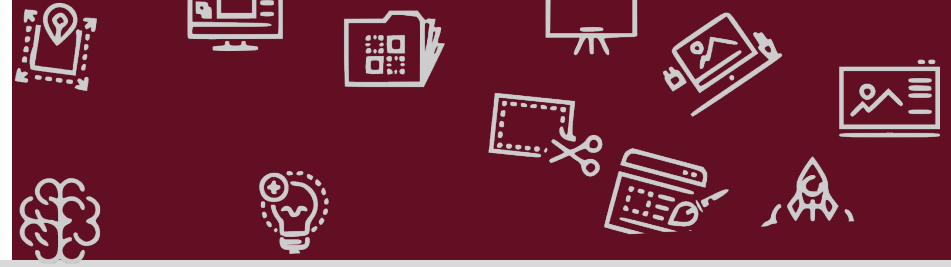


Data Presentation

Winter Update

Wednesday, February 21, 2024

Unlocking Potential. Creating Impact.



Definition Page

→ i-Ready Diagnostics Assessments:

- ◆ Computer-adaptive assessment that matches the difficulty of test questions to the proficiency level of each student.

→ Typical Median Growth:

- ◆ The median is calculated by ordering individual student growth percentiles from lowest to highest, and identifying the middle score, which is the median.
- ◆ The target is set from the results of the baseline Diagnostic assessment and remains the target for the school year.

→ WIN: (What I Need)

- ◆ A time for teachers to personalize instruction to further meet the unique needs of each learner in every classroom.

TESTING WINDOWS

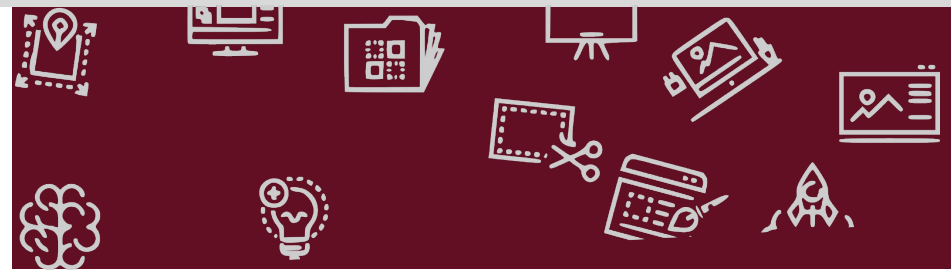
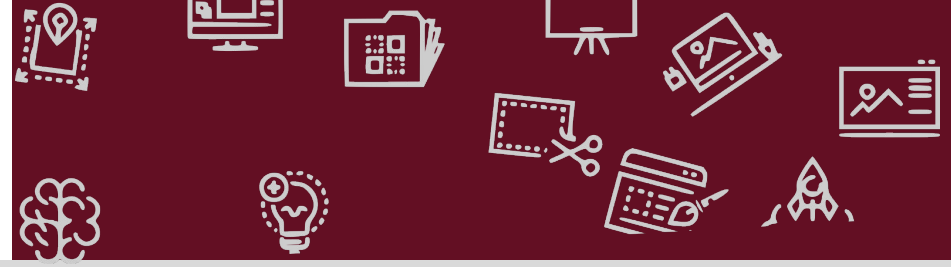
- ◆ Fall 2023: September 18-29
- ◆ Winter 2024: January 22 - February 2





i-Ready Language Arts 1-5

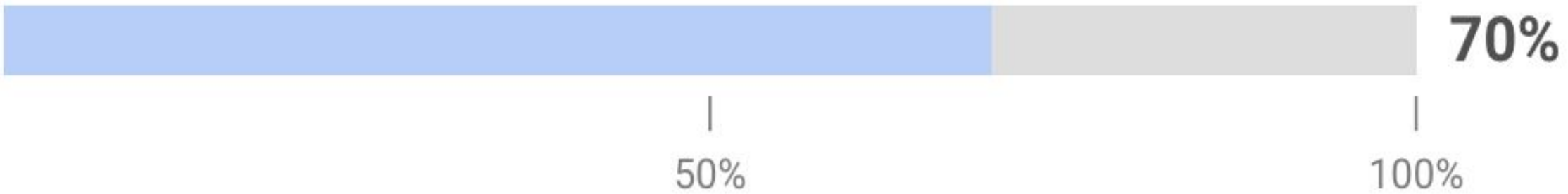
Unlocking Potential. Creating Impact.



Grades 1-5 Language Arts Literacy: i-Ready

→ 50% toward Typical Growth at mid-year is what we want to see.

Progress to Annual Typical Growth (Median)



Grades 1-5 Language Arts Literacy: i-Ready

→ 37% of our students already met **their full-year growth goal** by the mid-year point.



Grades 1-5 Reading Diagnostic Growth by Grade: i-Ready

Grade	Annual Typical Growth ⓘ	
	Progress (Median) ⌵	% Met ⌵
Grade K	—	—
Grade 1	55%	20%
Grade 2	69%	37%
Grade 3	76%	38%
Grade 4	90%	46%
Grade 5	79%	43%

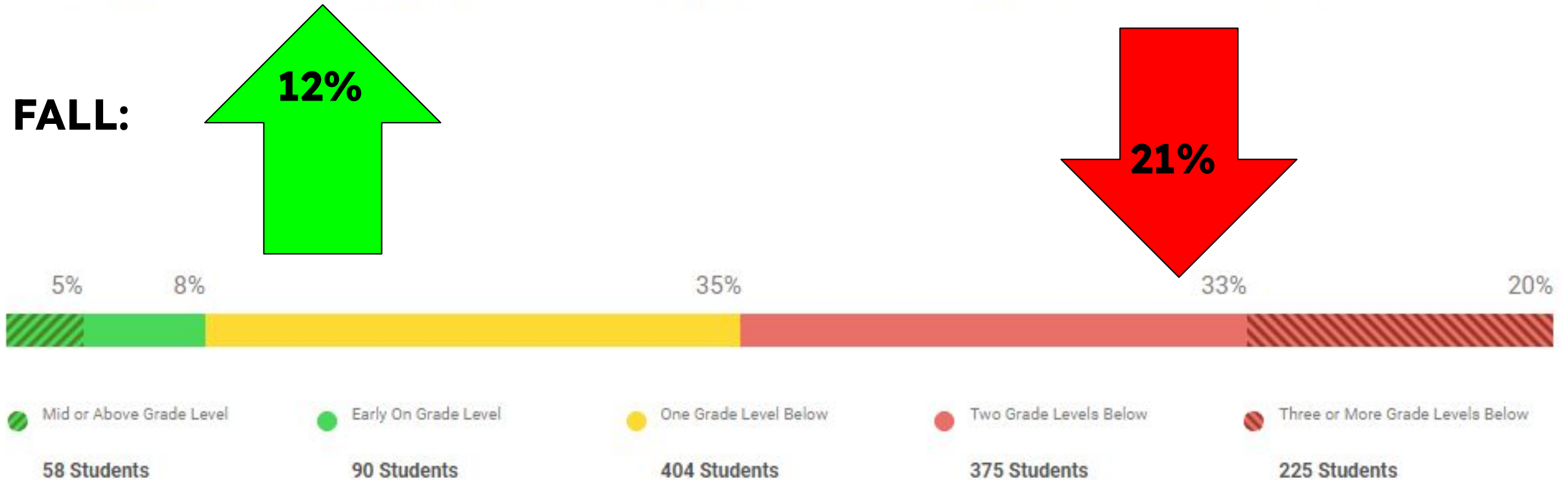


Grades 1-5 Language Arts Literacy i-Ready: Current Placement Distribution

WINTER:



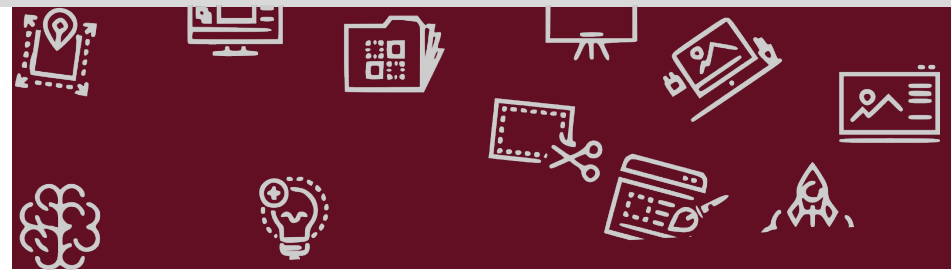
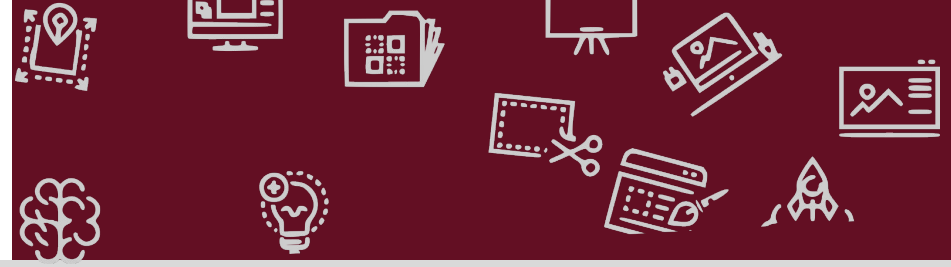
FALL:





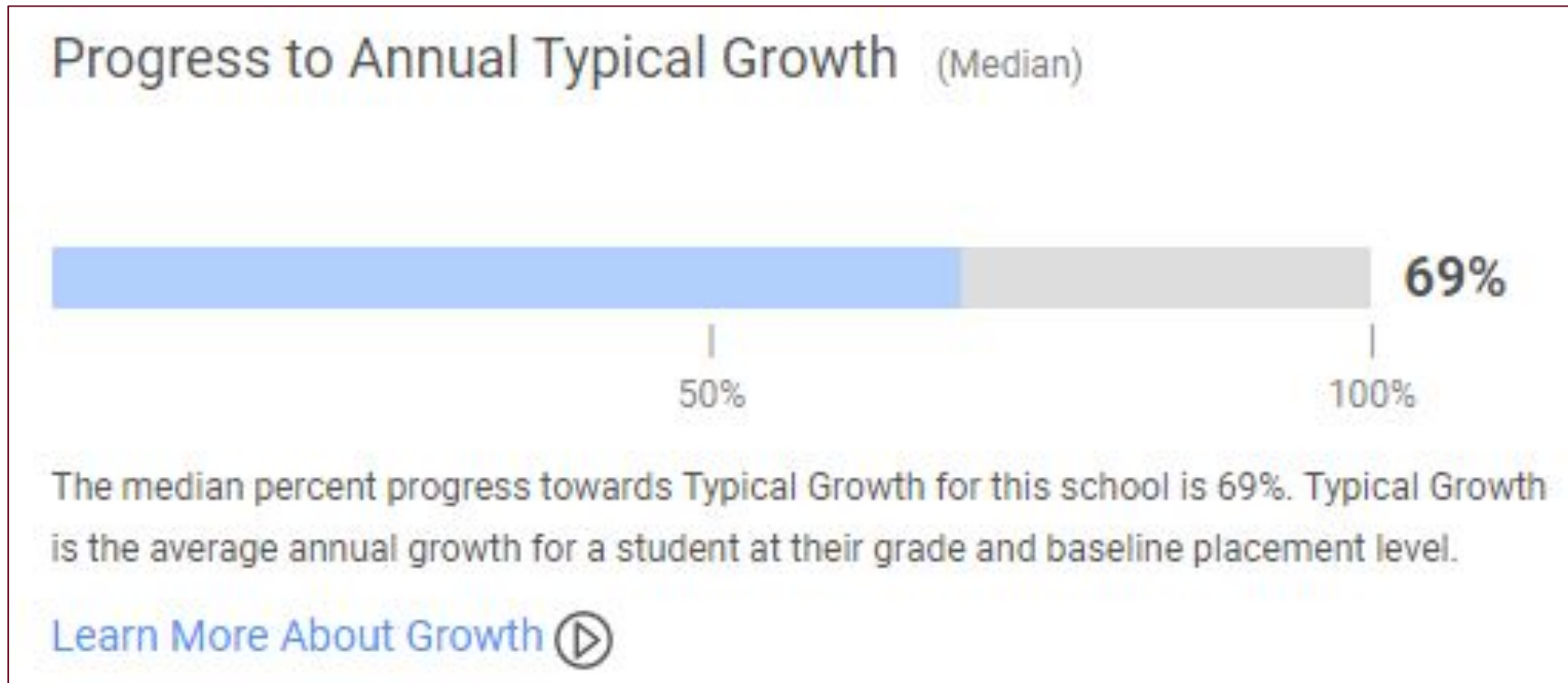
i-Ready Math 1-5

Unlocking Potential. Creating Impact.



Grade 1-5 Mathematics: i-Ready

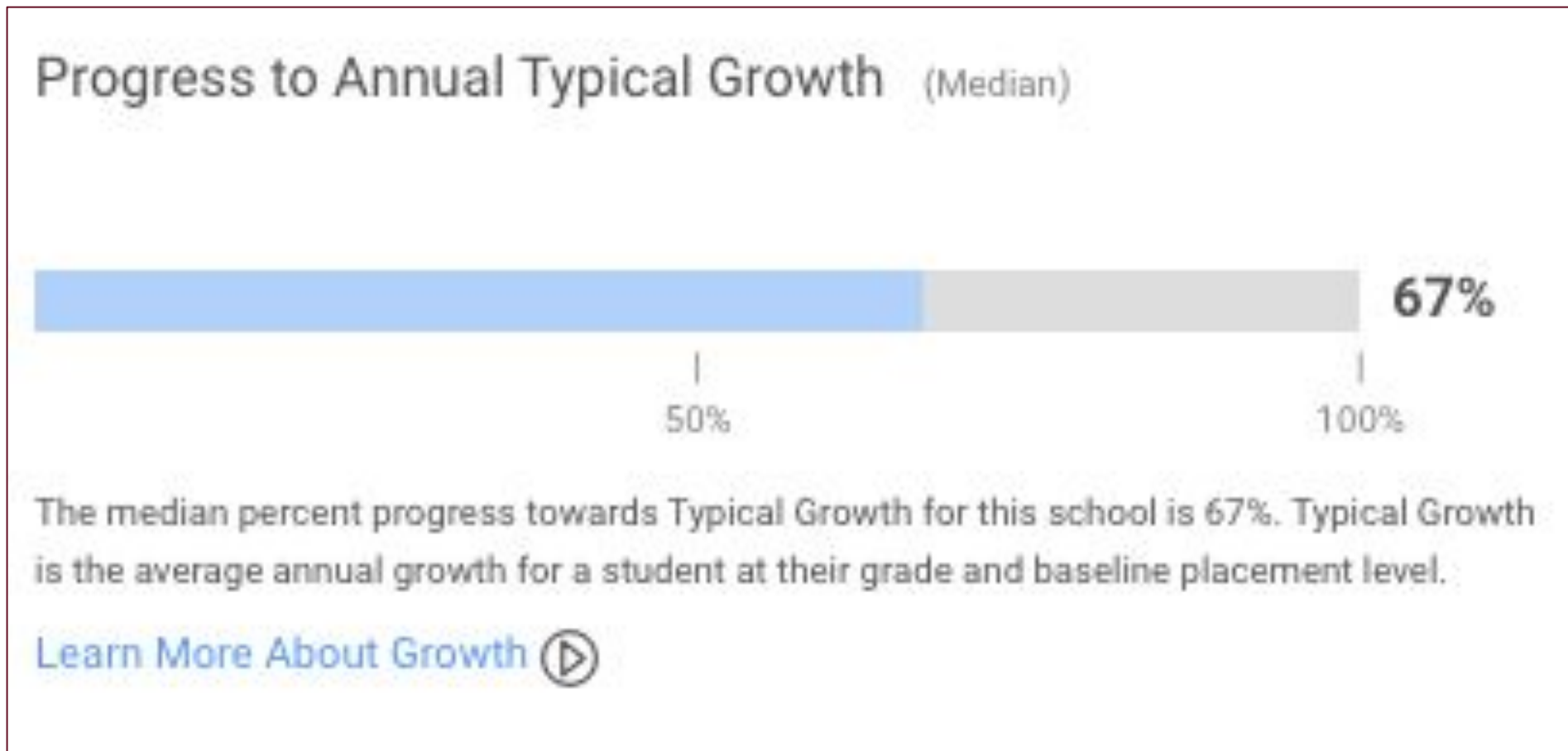
→ 50% towards Typical Growth at mid-year is what we want to see.



Grade 1-5 Mathematics: i-Ready

→ 50% towards Typical Growth at mid-year is the goal.

Spanish Math Winter Growth



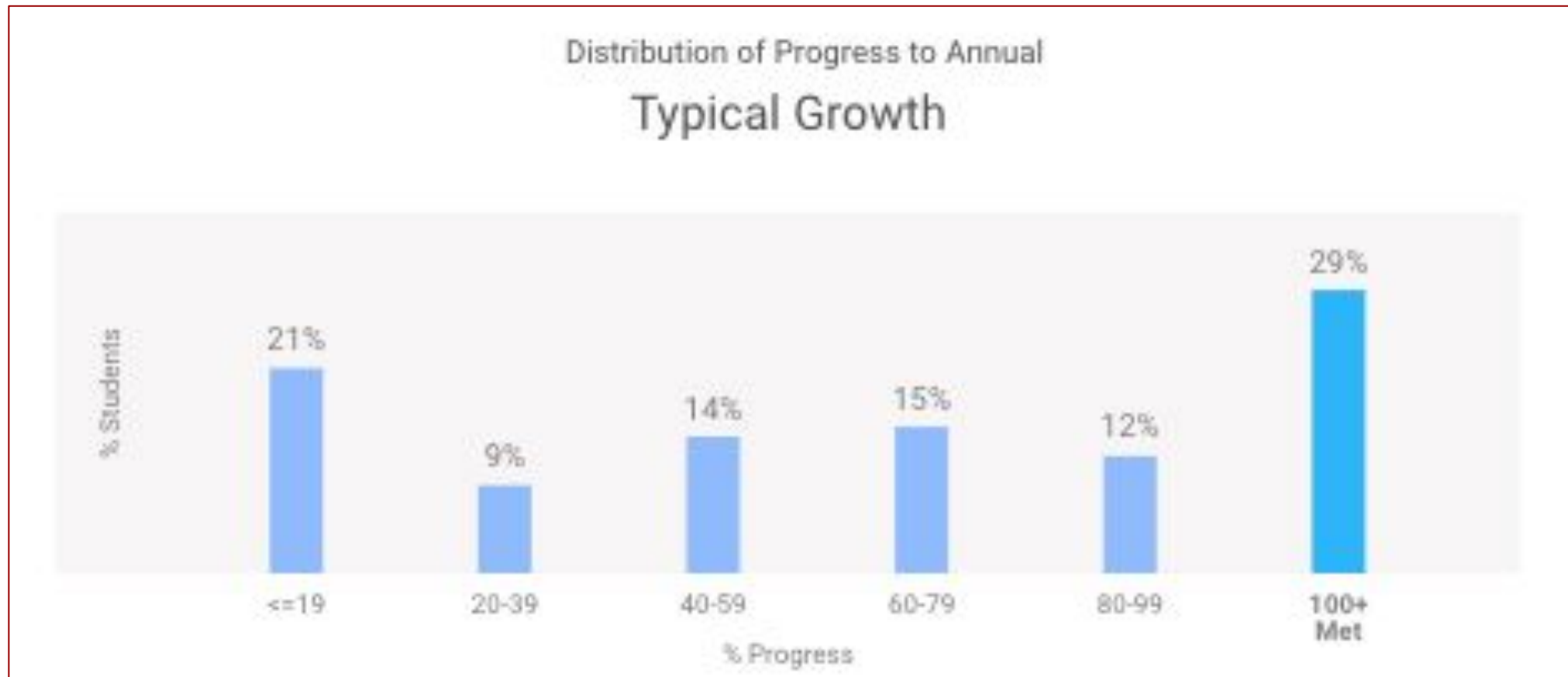
Grade 1-5 Mathematics: i-Ready

- 30% of our students already met **their full-year growth goal** by the mid-year point.













Grade 1-5 Mathematics: i-Ready

- 29% of our students already met **their full-year growth goal** by the mid-year point for dual Spanish Math.













Grade 1-5 Mathematics: i-Ready

Grade	Annual Typical Growth 	
	Progress (Median) 	% Met 
Grade K	–	–
Grade 1	 75%	29%
Grade 2	 79% 	33%
Grade 3	 65%	28%
Grade 4	 70%	31%
Grade 5	 45% 	28%



Grade 1-5 Mathematics: i-Ready

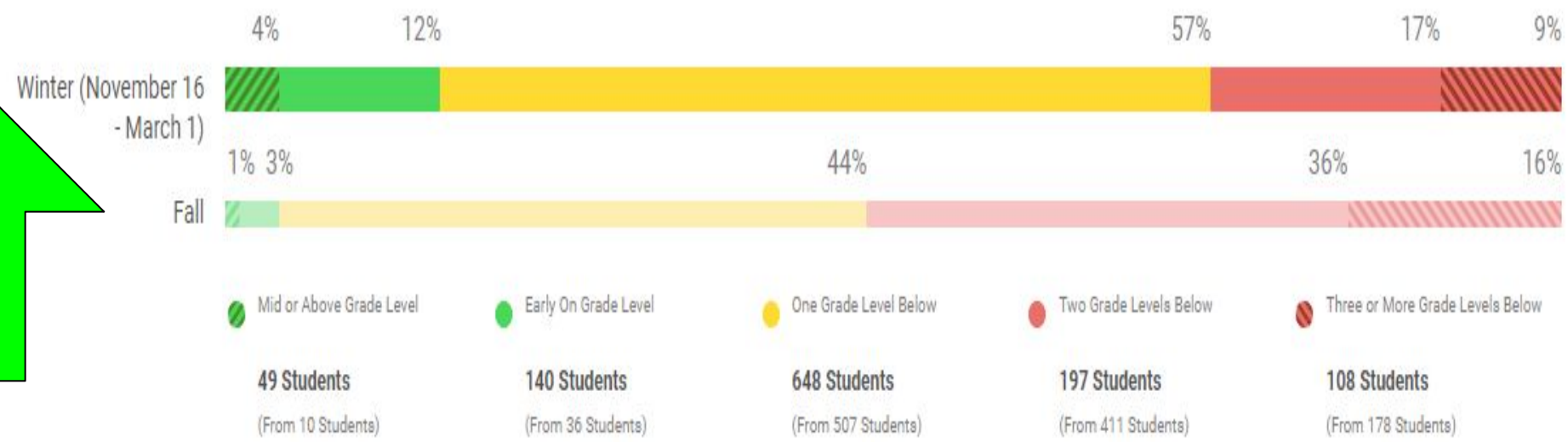
Spanish

Grade	Annual Typical Growth 	
	Progress (Median) 	% Met 
Grade K	-	-
Grade 1	 72%	26%
Grade 2	 76% 	34%
Grade 3	 63%	28%
Grade 4	 72%	32%
Grade 5	 39% 	25%



Grade 1-5 Mathematics

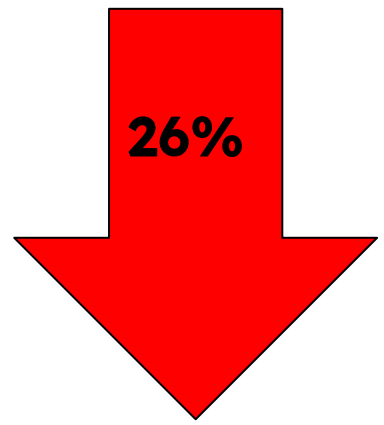
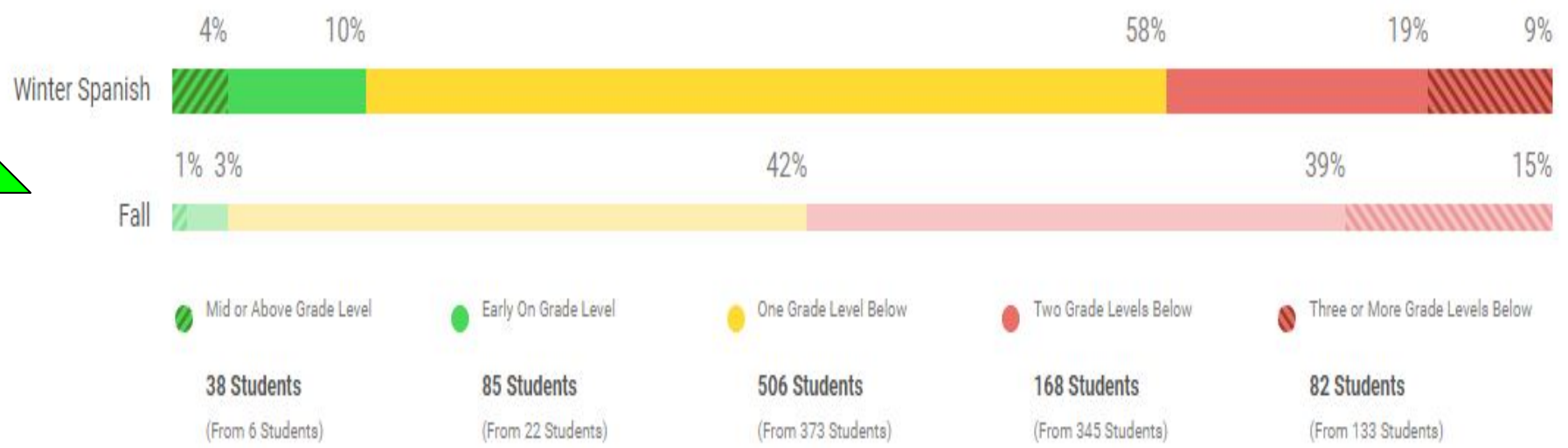
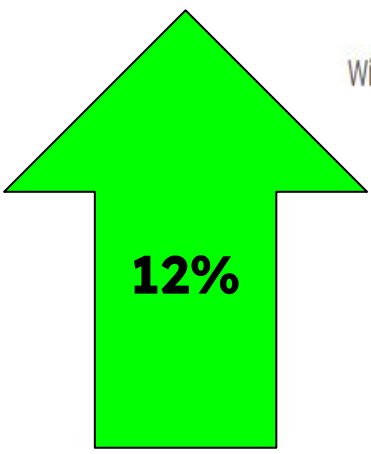
12%



26%



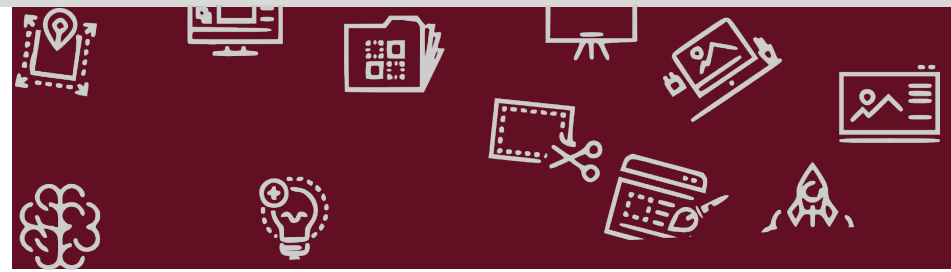
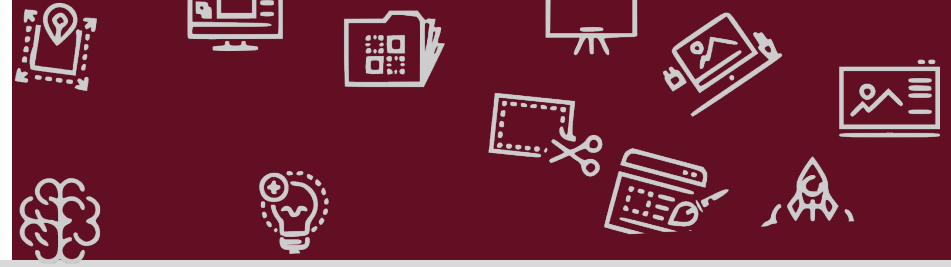
Dual Language





LinkIt Language Arts Grades 6-9

Unlocking Potential. Creating Impact.



LinkIt Information

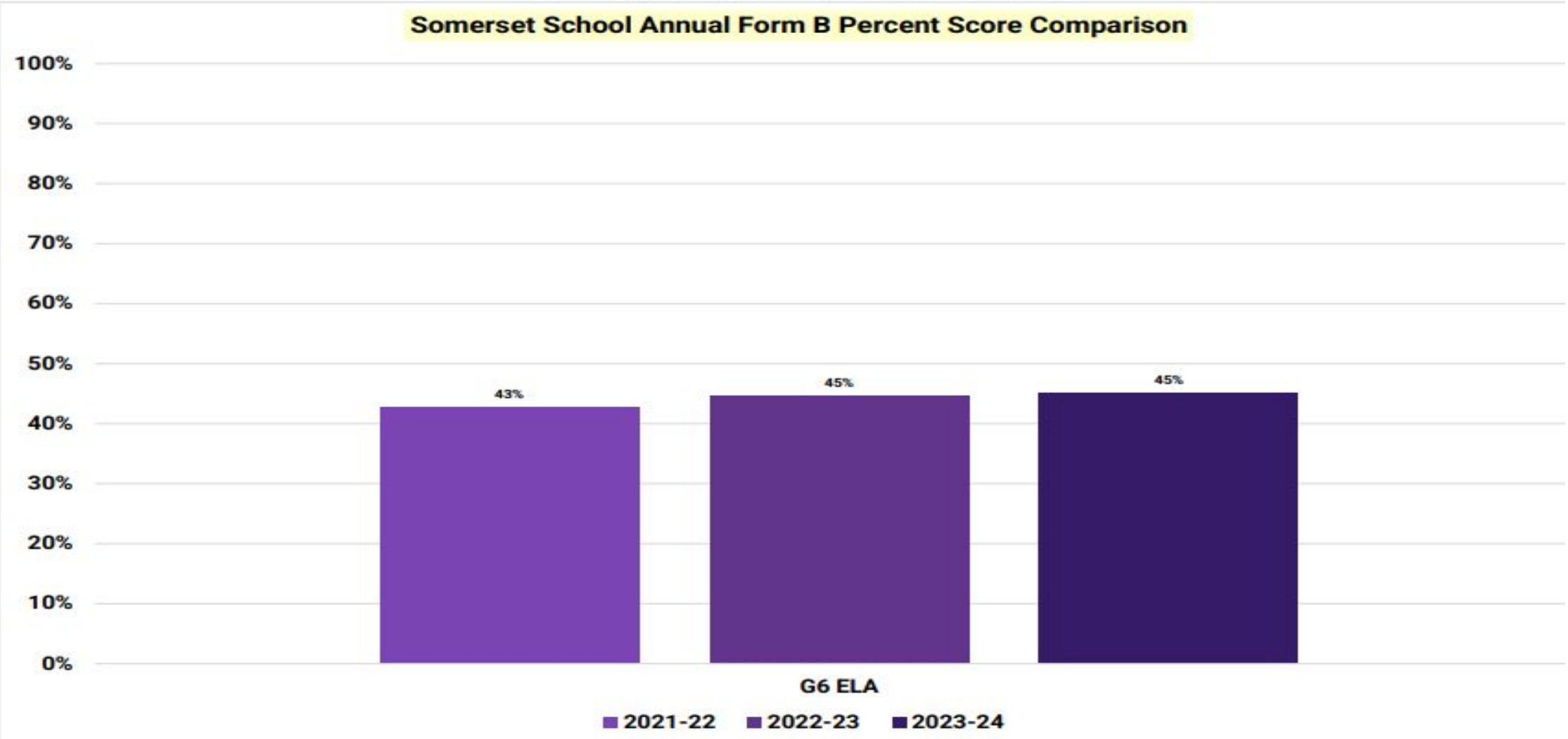
- LinkIt has cut scores for each subject and grade level.
 - Cut scores for mid year performance fall between 50%-60%.
- Testing Windows
 - December 4th-December 15th
 - Note: 23-24 was taken 6 weeks compared than 22-23



Longitudinal Summary

Same grade, different students

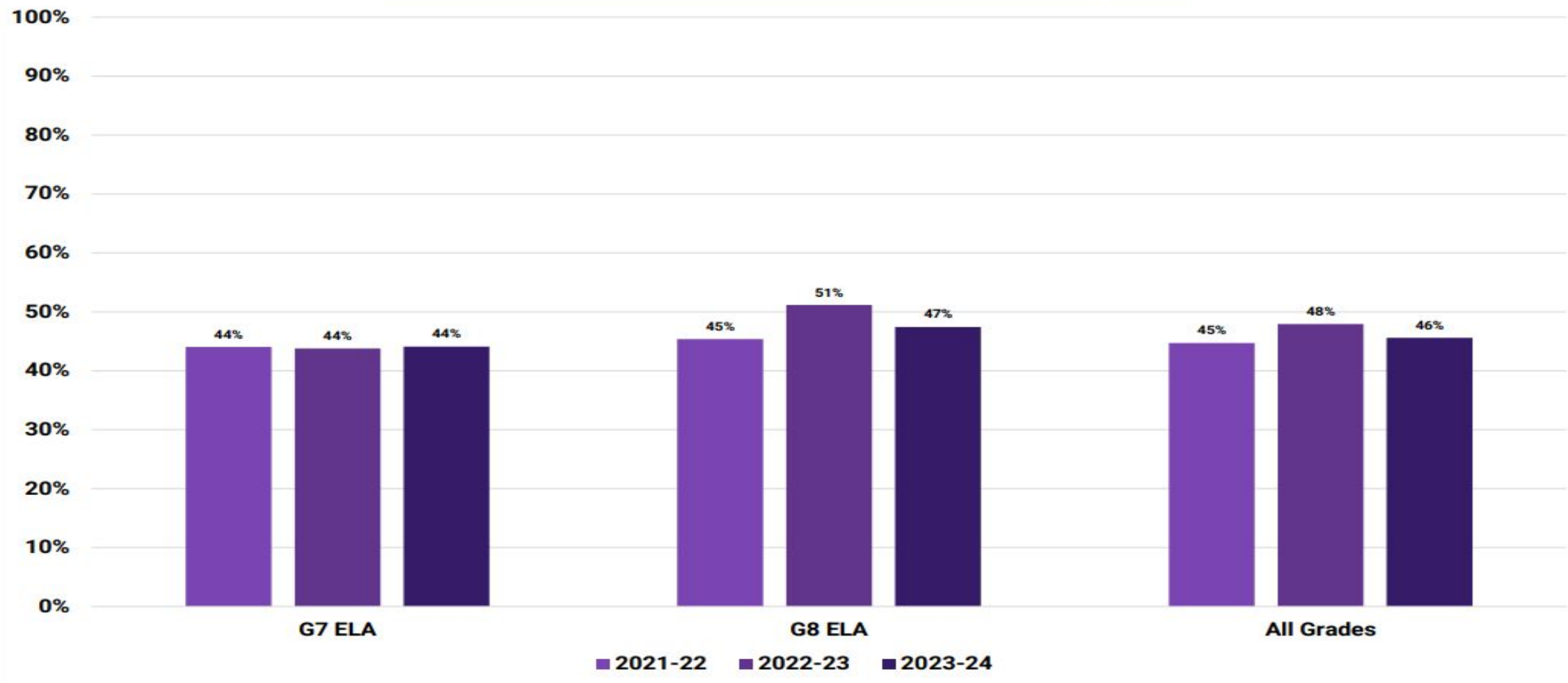
Somerset School Annual Form B Percent Score Comparison



Longitudinal Summary

Same grade, different students

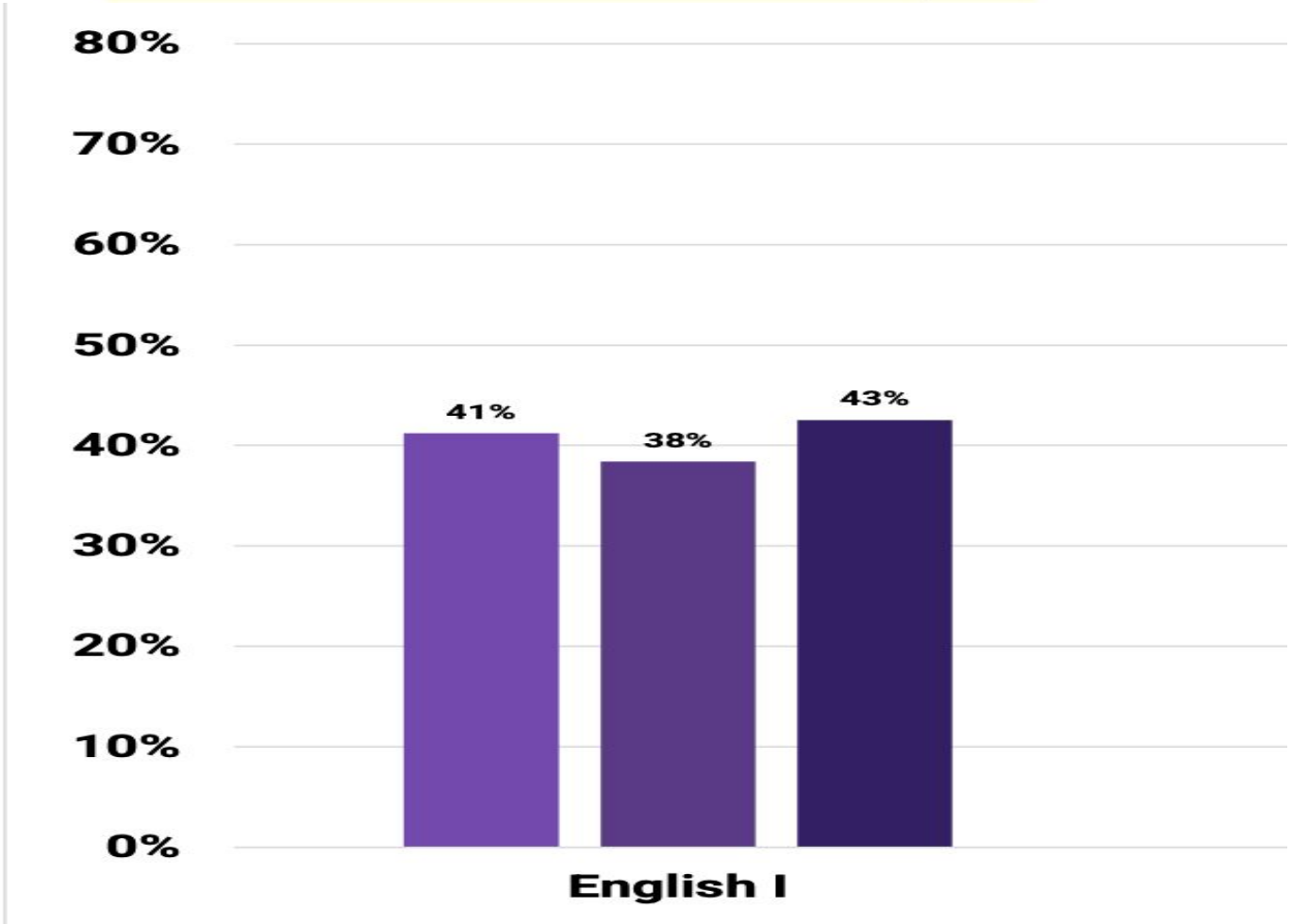
North Plainfield MS Annual Form B Percent Score Comparison



Longitudinal Summary

Same grade, different students

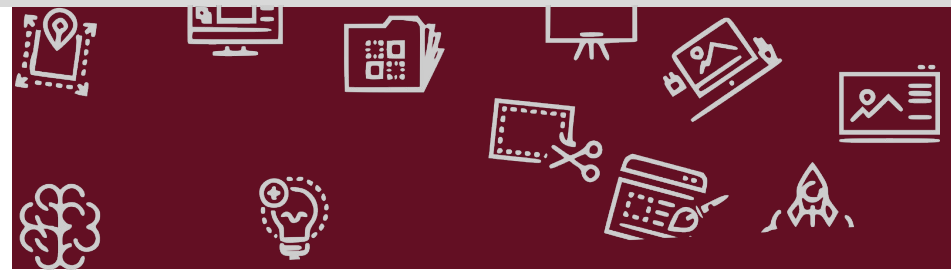
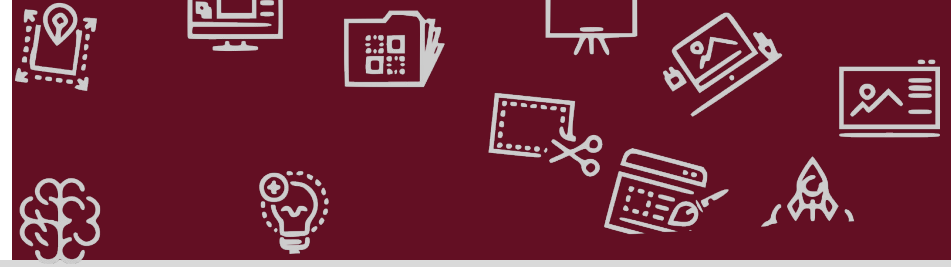
North Plainfield HS Annual Form B Percent Score Comparison





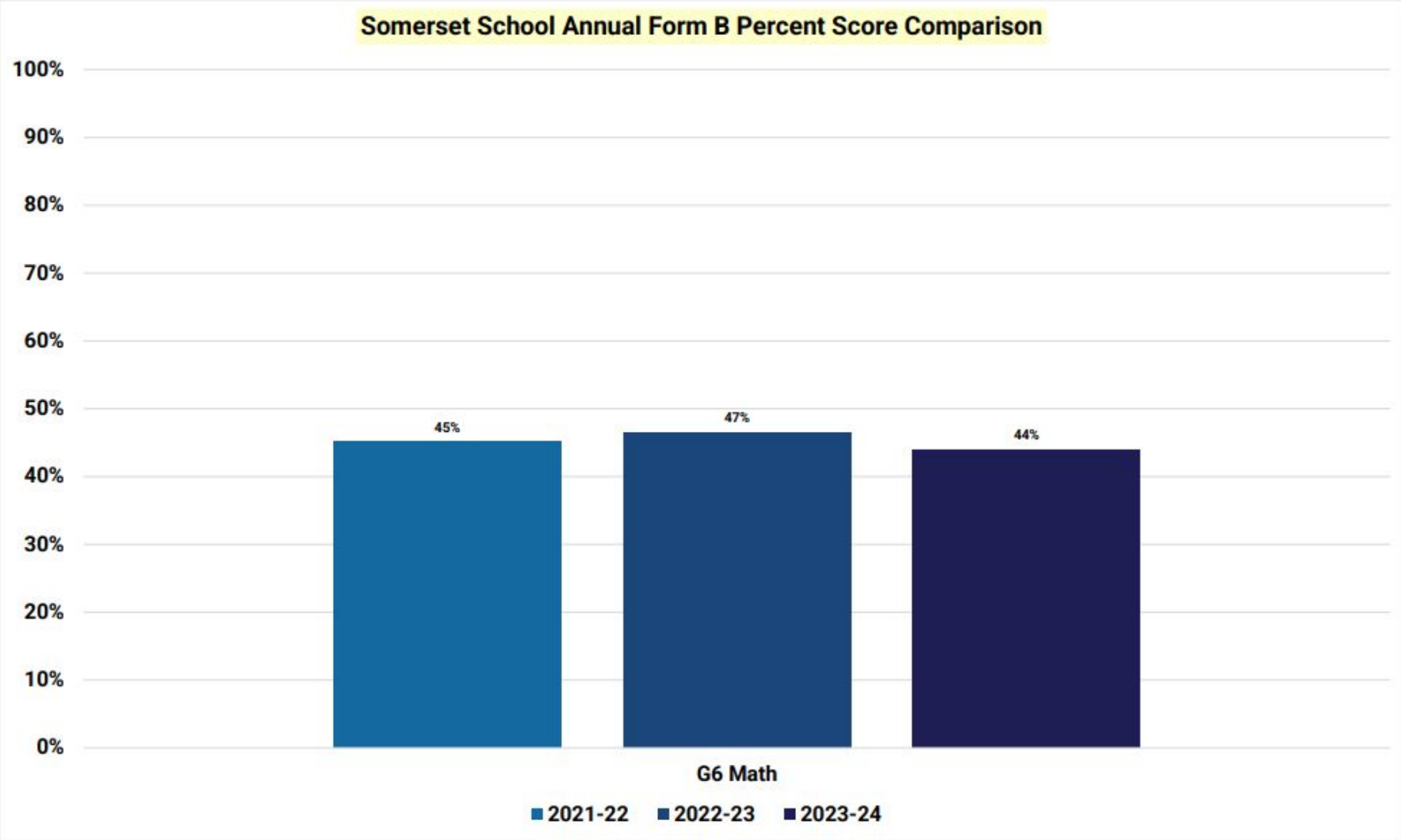
LinkIt Math Grades 6-9

Unlocking Potential. Creating Impact.



Longitudinal Summary

Same grade, different students

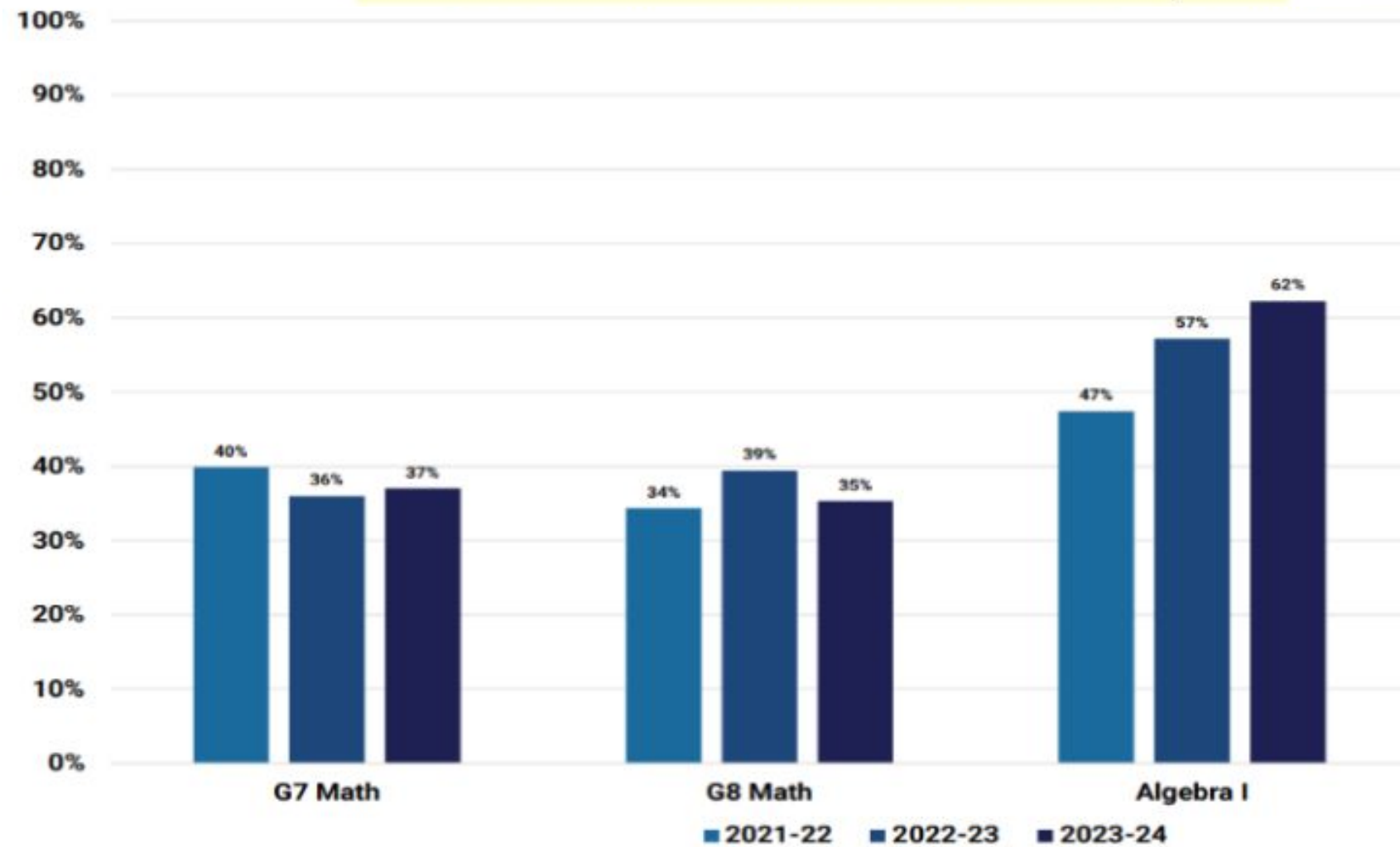


Longitudinal Summary

Same grade, different students

North Plainfield HS Annual Form B Percent Score Comparison

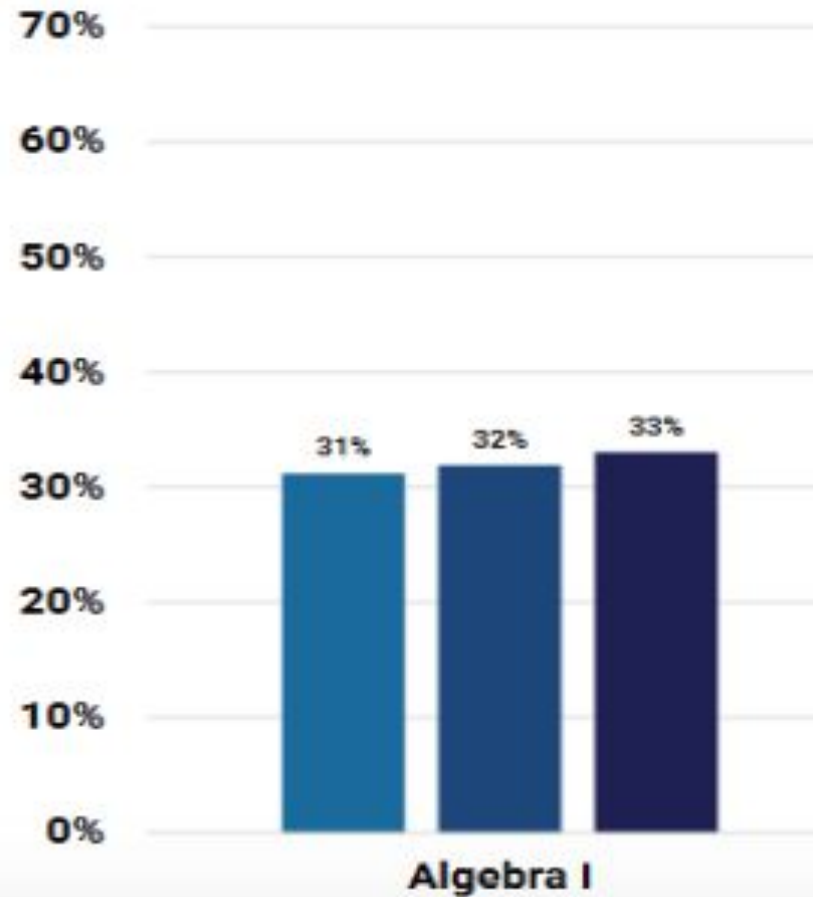
on



Longitudinal Summary

Same grade, different students

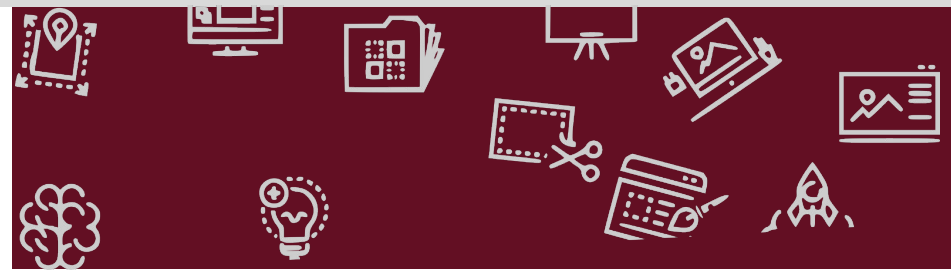
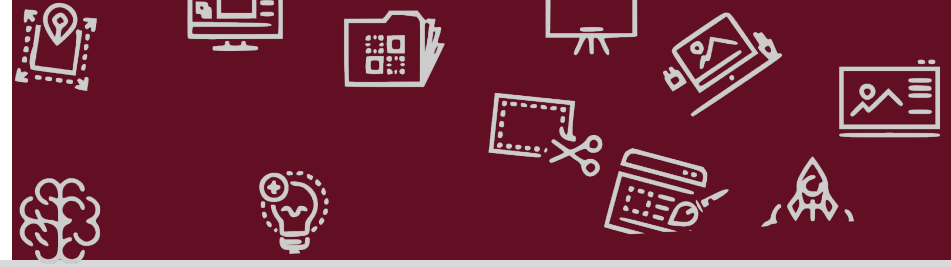
North Plainfield HS Annual Form B Percent Score Comparison





NEXT STEPS

Unlocking Potential. Creating Impact.



Moving Forward

→ **Grades K-5:**

- ◆ Continued evaluation of students' progress from Grade 4 Language Arts Literacy WIN period and MyPath pilot.
- ◆ Launch of Standards Mastery as Guided Practice in Grades 3 & 4 Language Arts Literacy periods.
- ◆ Development of targeted Tier 1 plans based on winter growth data by data teams.

→ **Grades 6-9:**

- ◆ Implementing targeted Tier 1 plans based on data team findings.
- ◆ Continued use of professional development to analyze and triangulate data across grade levels.
- ◆ Strengthening staff proficiency in data analysis for instructional purposes





Comments/Questions

Unlocking Potential. Creating Impact.

