



MAINTAINING QUALITY & *Reimagining*

2024-2025

NORTH PLAINFIELD SCHOOL DISTRICT
TENTATIVE PRELIMINARY BUDGET

MARCH 19, 2024

We strive to meet our students where they are, and grow them to be successful as people when they leave our doors.





North Plainfield is a community-oriented school district that celebrates diversity and honors individuality.



WHO WE ARE

Our district is committed to expanding and improving academic and extracurricular opportunities for student growth, while balancing the social emotional health of all.



We invest in staff, students and community to equip learners with skills and knowledge to unlock their potential and create impact.



NORTH PLAINFIELD SCHOOLS



East End School



Stony Brook School



West End School



Somerset School



Middle School



High School



Harrison School

1- Student Experience



To create an experience that allows for the full exploration of interests, life opportunities, and careers while prioritizing well-being

2- Facilities & Safety



To create innovative, safe, and expanded learning environments in a fiscally prudent manner

3- School Climate & Culture



Strengthen a climate of respect and inclusion so that all have a sense of belonging

4- Teacher Recruitment & Development



Improve student outcomes by strengthening our professional learning practices and staff recruitment/retainment through a data-informed mindset

STRATEGIC PLAN GOALS *Driving the Work!*

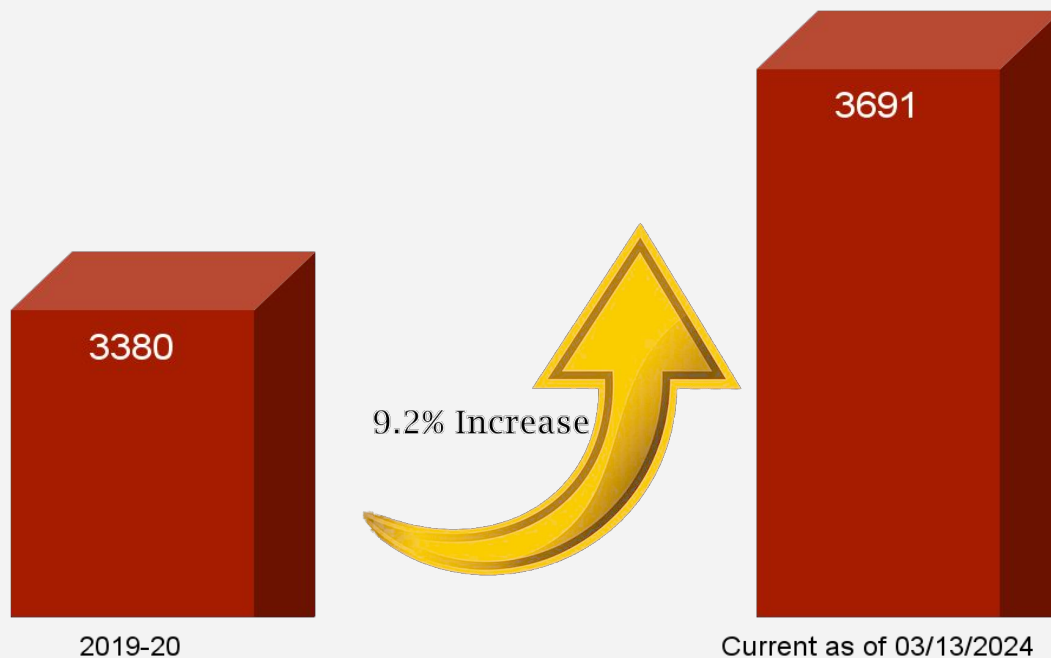


KEY BUDGET CONSIDERATIONS

- Reviewing and Analyzing Staffing Needs For All Programs Current and Proposed
- Increasing Enrollment
- Preparing For Negotiations – NPEA (Teachers, Secretaries, Custodians)
- Managing Health Benefits Renewals and Insurance Lines
- Maintaining Operational Efficiency/Aging Facilities
- Multi-Year Planning For Sustainability of Quality Program And Stabilization of Tax Impact
- Deletion of Essers Grant Funding
- Tax Impact On Our Community

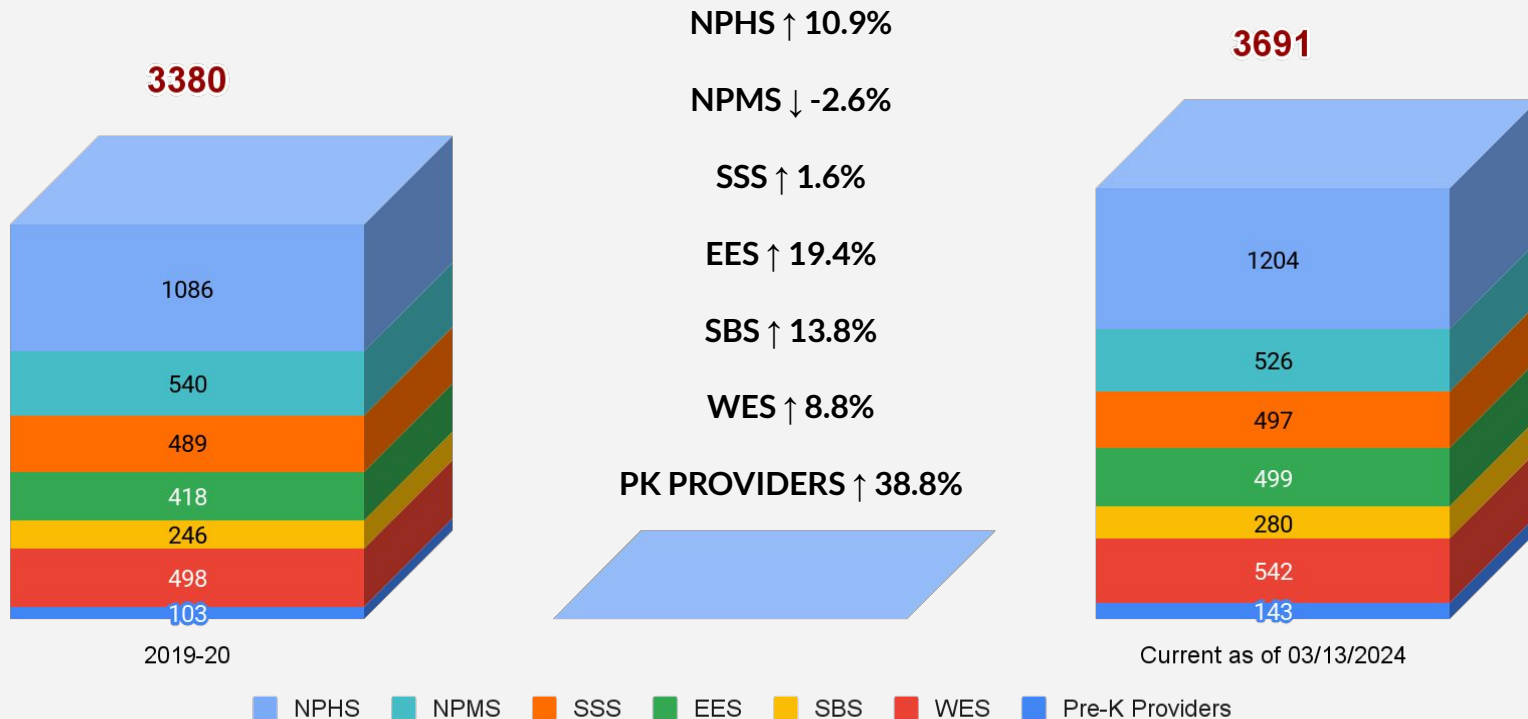


ENROLLMENT INCREASES





ENROLLMENT INCREASES CONT.





OPPORTUNITIES

Opportunity



16 Advanced Placement Courses
>>> Adding Env. Sci. in 2024-25



3 Career & Technical Education (CTE) Programs



Free Full Day PreK-3, PreK-4 & Kindergarten



Dual Language Immersion PreK-6
>>> PreK-7 in 2024-25



33 Clubs Offered (9-12) [34 next year]

11 Clubs Offered (7-8) [12 next year]

13 Clubs Offered (5-6) [14 next year]

7 Clubs Offered (K-4) [8 next year]

20 HS Sports Offered [21 next year]

10 MS Sports Offered [11 next year]



Teaching & Learning

Opportunity

World Class
Teaching Force

BUDGET GUIDING PRINCIPLES

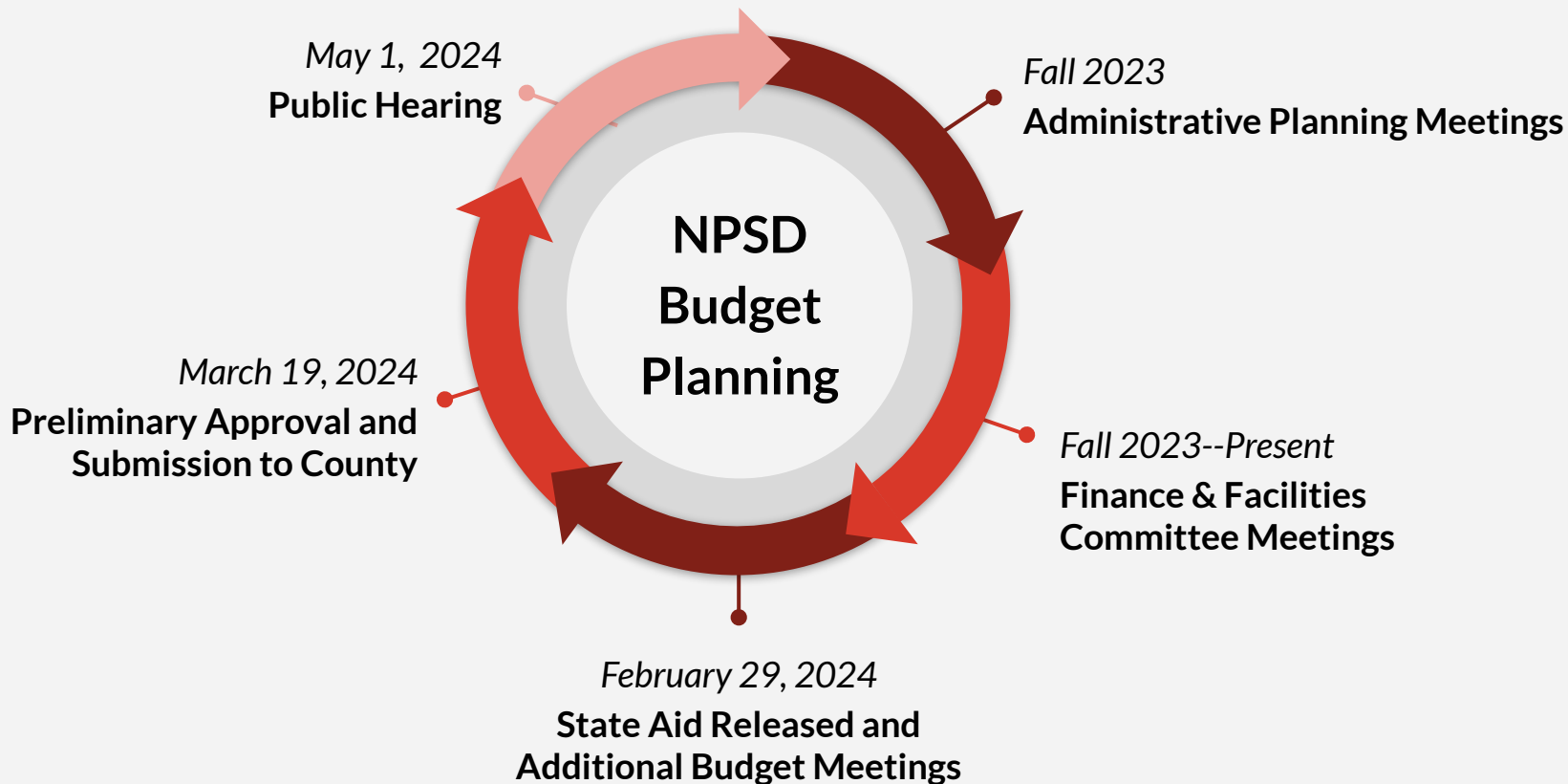
Fiscal
Responsibility

High
Expectations

Safe & Secure Schools







DELIBERATE, PURPOSEFUL & COLLABORATIVE





STAFFING UNDER CONSIDERATION

- 
- 
- HS Assistant Principal
 - HS Nurse
 - Elementary ESL
 - SS Special Education
 - Residency and Truancy Officer

- 
- 
- 2 Custodians at the Complex
 - 17 Full-Time Paraprofessionals
 - EE Interventionist
 - 4 Full-Time Teachers to Reduce Stipends & Create Teacher Time
 - Special Education Coach



CELEBRATIONS

46%

increase in Spanish
speaking staff since 2019

91%

of staff have rated
professional learning as
CONDUCTIVE to their
professional growth

Approx 90%

reduction in teacher
coverages due to
increased substitutes

86%

of new teachers offered
re-employment have
been **RETAINED** in the
last 4 years



OPPORTUNITIES FOR STAFF

- **KEANetwork**
- **Mentors** for all new staff regardless of certification status
- 50% **reimbursement** for college credits
- TCNJ partnership for **ESL/Bilingual certification**

- **Stipend** for paraprofessionals in self contained ABA classrooms
- **Paid** summer **training** and **paid** after-school **professional learning**
- **Compensate** staff for **curricular events**
- **For NP, by NP**

STUDENT ACTIVITIES

New Clubs & Activities 24-25

- **NPHS** Flag Football
- **NPMS** Football
- **NPMS** Dance Club
- **SOM** Jazz Club
- **EE** Strategic Games Club
- **WE** Musical Theatre Club





CURRICULUM & PROFESSIONAL LEARNING... *Student Experience*

Language Arts Literacy

- Pilot Language Arts Program (Gr. K-2)
- Language Arts Merge (Gr. 7)
- New Literacy Courses/Curriculum (Gr. 12)

Math

- GoMath (Gr. K-5)
- Enhance AP materials

Science

- OpenSciEd(Grades 5-8)
- Course updates (Grades 5-12)
- Students 2 Science partnership continues

Social Studies

- Common resources (Grades K-4)
- Additional electives (Grades 9-12)

Fine, Practical & Performing Arts (FPPA)

- Course updates (Grades 9-12)
- **Foundations of Education**
- **Business Program**

Diversity & Equity Focus

- **JEDI:** Ongoing diversity initiatives to foster inclusive excellence
- **Restorative Practice:** Build Community & Manage Conflict

Focused Instructional Techniques

- **What I Need (WIN) Period** (Gr. K-4)
- **Small Group Instruction** (Gr. 5-12)
- **Sheltered Instruction** (Gr. 7-12)



CURRICULUM & PROFESSIONAL LEARNING... *Teacher Development & Support*



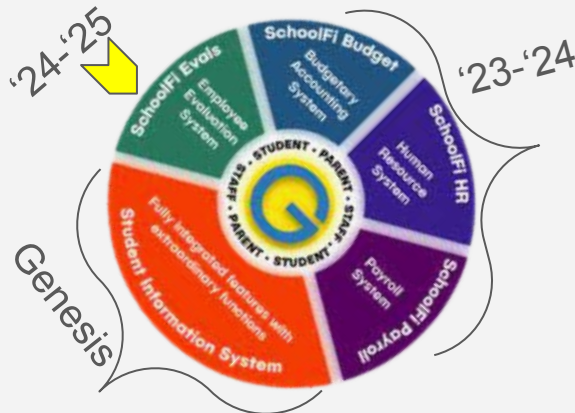
Multi-year initiative including Professional Learning, planning and implementation



Atlas

One unified Curriculum Planning, Development & Management Platform

SchoolFi Evaluation (District)



Continued Tier 2 & 3 identification data teams and progress monitoring

Additional training & equity in materials



i-Ready Benchmark assessments (Gr. K-8)



Data Warehouse (District)

Introduce common assessments (Gr. 6-12)



BILINGUAL/SPECIAL ED UPDATES



Bilingual/ESL Program

- Program structure shifts



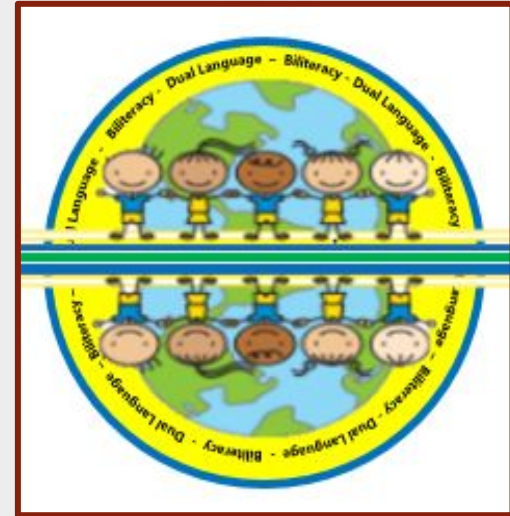
Dual Language

- PK-7
- Grade 7 - Hispanic Heritage Course



Special Education

- Co-teaching models
- Least restrictive environment
- n2y - Self-contained classroom program





CAPITAL PROJECTS



Health & Safety

- Roof Replacement/Repair- High School, East End, Stony Brook- **Rod Grant Application**
- Continued HVAC Replacements- HS Completion as well as Somerset School and Stony Brook School, East End

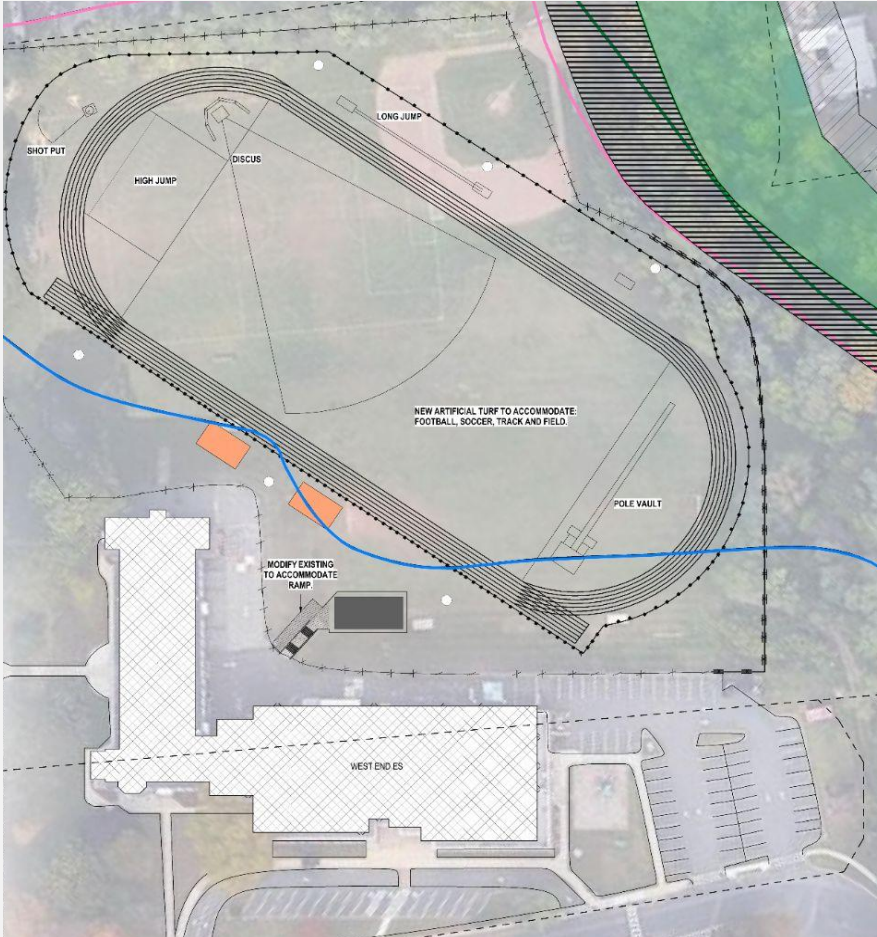


Enrollment/Space

- High School Room. 127 Woodshop to 3 Classroom Conversion
- East End Preschool Expansion
- Planning of HS Media Center Reimagination



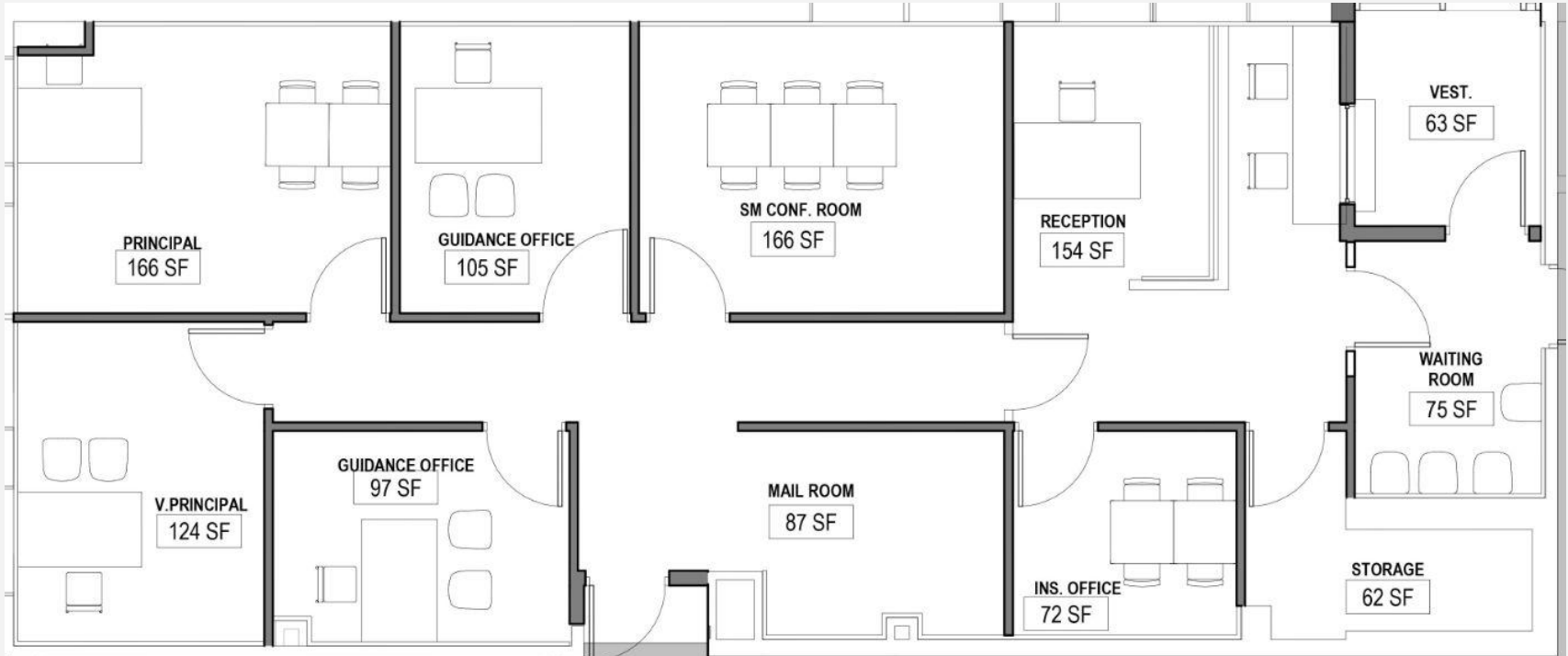
WEST END TRACK



spent better
current public years hs play
west accessible people open
classes budget many sports good taxes
field children flooding new turf
space high great idea kids track project
important end community utilize
fix athletes exercise
baseball money



NPMS MAIN OFFICE





NPHS ROOM 127 - STEM LAB



Being Reimagined Into STEM Flex Space

- High School Technology and Engineering curricular programming
- Middle School Technology and Engineering rotations
- FIRST Robotics Team practice arena
- Future Esports Arena
- Hosting local and regional competitions



Four Total Laboratory Spaces Divided by Retractable Glass Partitions

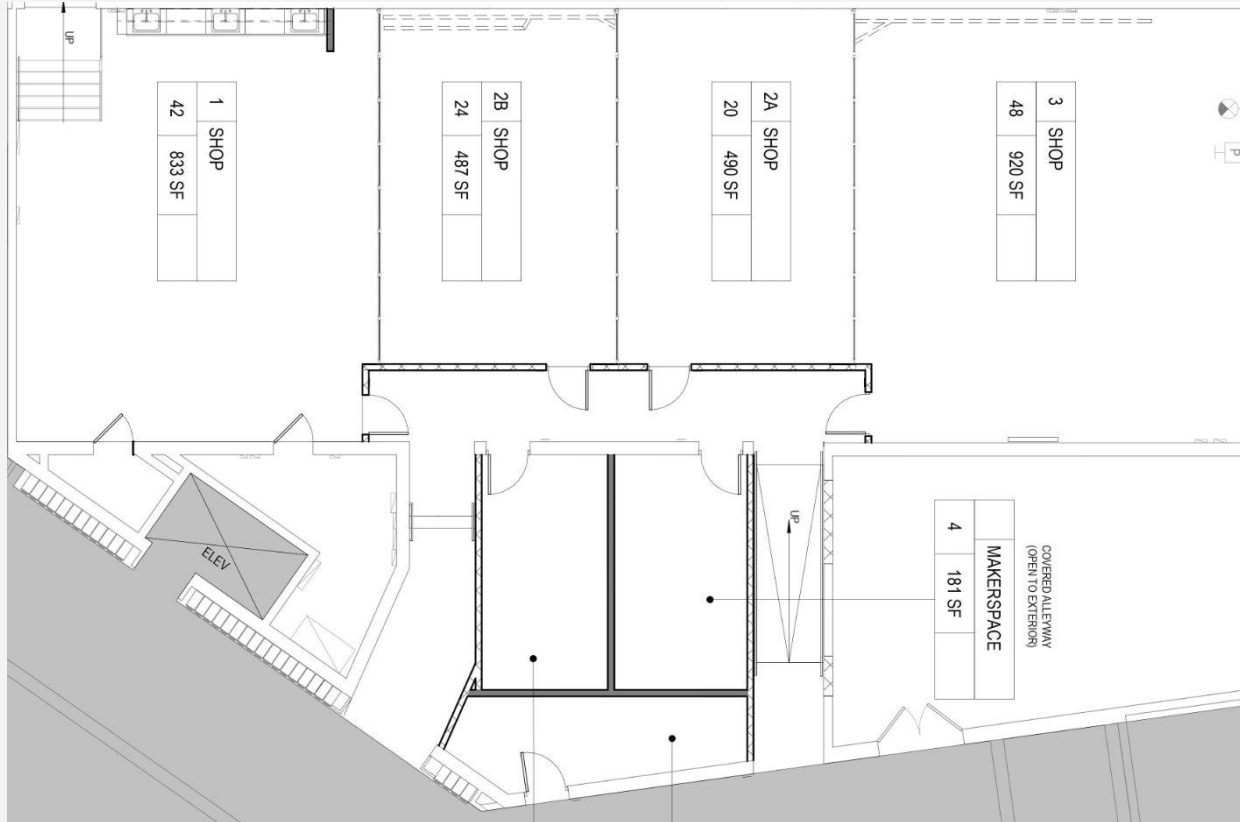
- Multiple possible configurations
- Durable, flexible furniture facilitates space transformation



First Phase in Long-Term STEM/Science Lab Reimaginings



NPHS ROOM 127 - STEM LAB





ROD GRANT - HVAC/ROOF

ROD Grant Allocations: **65%** State Funded and 35% LEA funded

Roof	State Funding	District Funding	Total
High School	\$770,737.08	\$421,333.92	\$1,192,071
East End	\$198,874.53	\$128,717.47	\$307,592
Stony Brook	\$251,920.97	\$136,716.03	\$389,637

HVAC	State Funding	District Funding	Total
High School	\$1,207,253.46	\$659,961.54	\$1,867,215
Somerset	\$315,647.17	\$172,552.83	\$488,200
Stony Brook	\$1,548,238.40	\$846,365.60	\$2,394,604



ROD GRANT SLIDE - East End Addition

ROD Grant Allocations: **65%** State Funded and 35% LEA funded

East End Addition	State Funding	District Funding	Total
3 Classrooms & Elevator	\$2,549,830.46	\$1,393,899.54	\$3,943,730.00





Year 2 HVAC
Replacement-June 2025

NPHS Gym
Bleachers

High School Weight Room
Reimagination- Equipment
Replacement

West End Track

Year 2 Roof
Replacement
Plan-Summer 2024

**COMMITMENT
TO IMPROVED
FACILITIES**

MS Gym Audio
System

Drop Ceiling and
Floor Replacement
Multi-Year Plan

High School Painting-
Tiles and Gymnasium
Foyer



District Wide Burglar
Alarm Improvements

Bus Cameras/Continued
School Camera
Installations

Door Security Wiring
Complex & Somerset

2 Replacement School
Buses

**COMMITMENT
TO IMPROVED
HEALTH, SAFETY,
& SECURITY**

LED Light
Pedestrian
Crossing Signs

Residency/Security
Vehicle

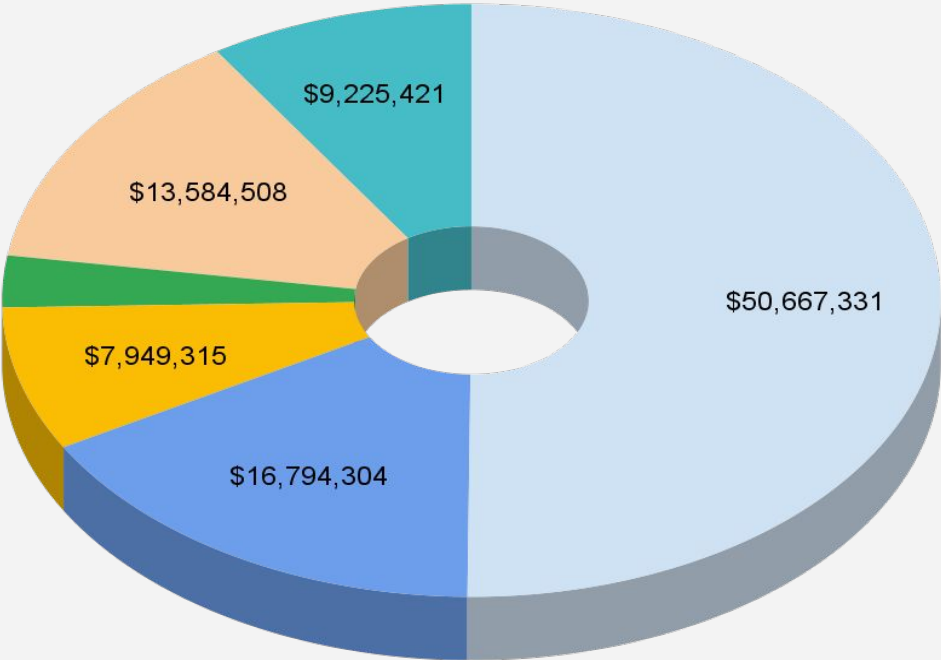
2 Community Room
Audio/
Visual Systems

District Wide New
Phone System





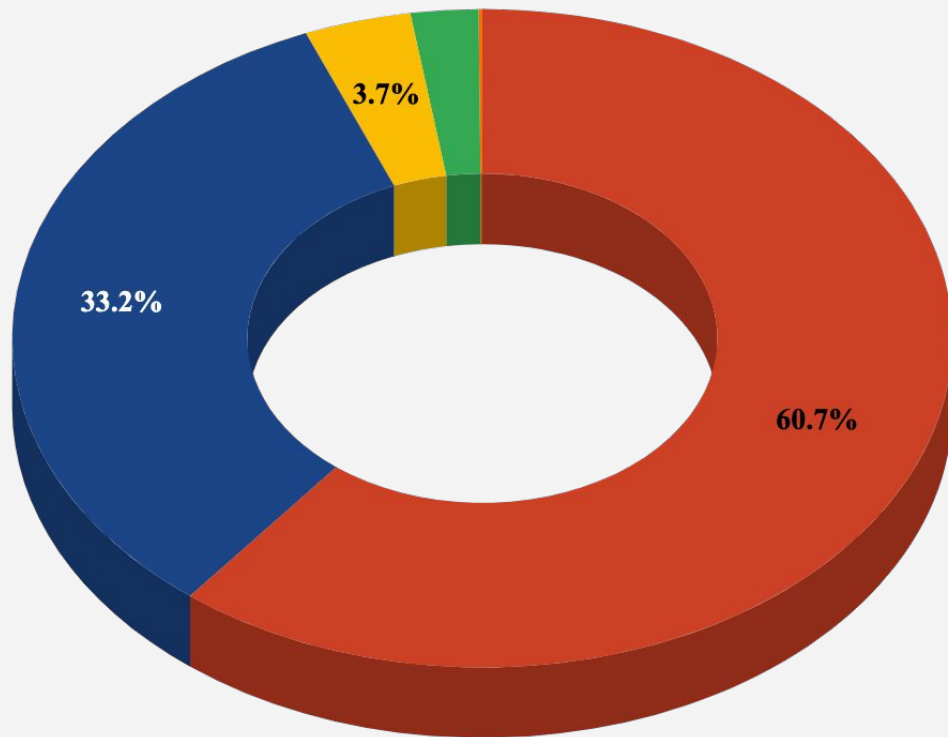
APPROPRIATIONS - *How is the Money Spent?*



- SALARIES
\$50,667,331
- BENEFITS
\$16,794,304
- BUILDINGS & GROUNDS
\$7,949,315
- TRANSPORTATION
\$2,839,670
- CAPITAL
\$13,584,508
- SUPPORT & OTHER
\$9,225,421



WHERE DOES YOUR SCHOOL BUDGET REVENUE COME FROM?



STATE AID:

\$58,649,072.00 (60.7%)

LOCAL TAXES:

\$32,084,894.00 (33.2%)

PRESCHOOL AID:

\$3,542,252.00 (3.7%)

FEDERAL AID:

\$2,256,521.00 (2.3%)

MISCELLANEOUS REVENUE

\$121,000.00 (0.1%)



BUDGET COMPARISON YEAR TO YEAR

	Budget 2024-2025	Budget 2023-2024	\$ Change	% Change
Tax Levy	\$32,726,592	\$32,084,894	\$641,697	2%
State Aid	\$68,322,958	\$58,649,072	\$9,673,886	16.5%
Debt Service	\$1,010,200	\$1,057,200	-\$47,000	-4.4%
Special Revenue	\$5,429,969	\$7,991,826	-\$2,561,857	-32.055%
Total Budgeted Expenditures	\$107,489,718	\$93,074,506	\$14,415,212	15.49%



THANK YOU!

Questions?

Public Budget Presentation

May 1, 2024

We strive to meet our students where they are, and grow them to be successful as people when they leave our doors.

