

Vacancy

Director of Drama



Prior Park
College



Contents

- Message from the Head
- The School
- Prior Park Schools
- The Person
- The Department
- The Position
- The Benefits
- The Process

“ Prior Park College overlooks the UNESCO World Heritage City of Bath and is listed by the Oxford Royale Academy as one of the most beautiful boarding schools in the UK. ”



Message from the Headmaster

Thank you for taking an interest in the role of Director of Drama at Prior Park College. We are excited to see how the successful applicant for this role will bring forward their ideas and energy to support our Drama Department.

We hope that you find this brochure helpful and informative, but, should you require any further guidance, please do contact our HR team who will be happy to assist further.

We look forward to receiving your application.

Ben Horan, Head, Prior Park College, Bath

Mission Statement:

To steward a thriving family of communities with love for the young people they serve at their heart: communities which cultivate creativity, foster integrity, and transform lives.

Our Values:

Curiosity • Generosity • Courage



The School

With over 600 students, Prior Park College is led by Mr Ben Horan. It overlooks the historic city of Bath and is one of the largest independent co-educational, Catholic boarding and day schools in the UK. Whilst retaining full-time boarding at its heart, the College caters for day and weekly boarding students, offering stimulating opportunities for them to contribute to a vibrant and creative community. The College aims to inspire and challenge every one of its students to prepare them for the next stage of their lives.

Great schools, like Prior Park, help our students to explore who they are and find the adult they wish to be.

“ At Prior Park, our exceptional teaching , our staff who know every student personally, and our broad academic provision allow every learner to find their individual gifts, talents and passions, and make the very best of them. We encourage our students to embrace all the opportunities on offer - acting and singing in first class productions, competing for their team, producing impressive works of art and design, leading our charities work, participating in co-curricular clubs and activities, and taking a full role in House activities. ”

“ Prior is very much a community, where students look out for each other and after each other. ”



Prior Park Schools

Prior Park Schools is a family of Christian schools based in Bath and Gibraltar. Together, the Schools offer education for pupils aged between 3 and 18. Since the establishment of Prior Park College in 1830, the family has grown, with The Paragon School joining in 2006, and Prior Park School Gibraltar being opened by Prior Park Schools in 2016.

The Schools' Mission is to steward a thriving family of communities with love for the young people they serve at their heart. These vibrant communities cultivate creativity, foster integrity, and transform lives.

Across three sites, the Schools educate over 1100 young people of all faiths and none. The values underpinning the Mission and the Schools' educational offerings are Curiosity, Generosity, and Courage. The Schools believe that quality education changes lives and that outstanding schools are engines for positive social transformation.

Our Schools provide excellent teaching, equipping our young people to leave for a variety of exciting destinations. The success of what the Schools do in the classroom is intertwined with their co-curricular offerings. The young people undertake a wide variety of activities, which, in addition to being fun, challenge them to persevere to succeed. We work together imaginatively and courageously to hone the skills our young people need to forge their place in the world.

Prior Park Schools (PPS) have long been renowned for the quality of their pastoral care. Grounded in the love that sits at the centre of our Mission, our pastoral ethos allows young people to feel safe and secure to challenge themselves, to learn who they want to be, and to discover the difference they want to make.

Each of the Schools' Heads are supported by a Leadership Team, who together lead the day-to-day educational business of their respective schools. The Board of Trustees provides governance and support for the Heads and their schools via a number of Advisory Committees which include Local Boards for each of the schools, the Finance, Audit, Investment & Risk Committee (FAIR), an Education Committee and Safeguarding.

The Executive management of the schools is devolved to the Prior Executive Board (PEB) which comprises the Heads of each constituent school, The Director of Operations & Finance, the Director of Development, and the Head of Compliance. The PEB drives the strategic development of PPS, ensuring that it is on track to deliver its Vision and thereby remains a market leader in independent education.

More information about our schools can be found at www.priorparkschools.com



The Person

We are looking for an inspiring, engaging, and talented teacher to join our experienced, friendly team, who has the relevant skills to teach Drama across the key stages including A level. The successful candidate will be passionate about their subject, dedicated to providing exceptional learning experiences within and beyond the classroom, and keen to contribute to the wider aspects of the school life. We welcome applications from people of all faiths and none but an understanding of and support for the school's Catholic/Christian ethos is important for all staff. All teachers are expected to play a full part in the wider extra-curricular life of this busy boarding and day school.

Skills

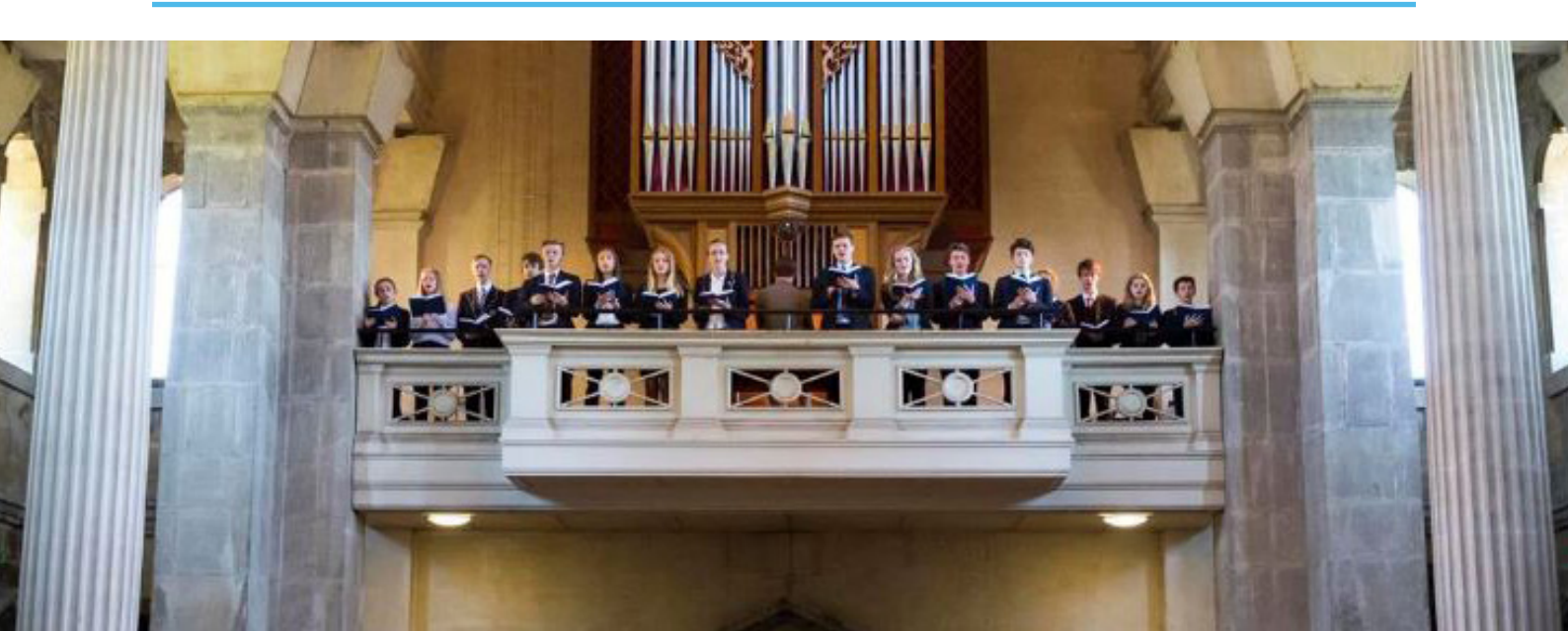
- Be an outstanding teacher, with exceptional subject knowledge
- Excellent communication skills and the ability to build relationships with students, parents and colleagues
- Excellent planning, administration, and time management skills
- The ability to work to deadlines

Experience

- Educated to degree level with Qualified Teacher Status
- Evidence of a commitment to continuing professional development

Personal Qualities

- Leading by example with honesty and integrity
- Be able to take the initiative
- Have a good sense of humour and be flexible and adaptable



The Department

Curriculum and Programmes

Drama is a compelling part of our school curriculum, taught across all Key Stages to ensure a thorough and immersive experience in the performing arts. At Key Stage 3, Drama is compulsory for Year 7 and Year 8 students, fostering foundational skills and a passion for performance from an early age. By Year 9, students have the option to continue their Drama education, a choice many embrace with enthusiasm.

For those with a deep interest in the subject, we offer GCSE and A-Level Drama courses following the Edexcel specification, allowing students to delve into both the theoretical and practical aspects of the discipline. Beyond the curriculum, we provide LAMDA tuition across all gradings (1 to 5, Bronze, Silver, Gold), facilitating individual growth and achievement in acting and communication.

Our department is also instrumental in bringing to life various productions and showcases, including the Key Stage 4 show "The IT," LAMDA Showcases, and compelling one-act pieces such as "Julie" and "Swallow." This year, our Senior School Production was the acclaimed "House of Bernada Alba." Furthermore, the Drama Department plays a crucial role in the whole school Musical, Inter-house Music, and other co-curricular activities, demonstrating our commitment to the wider school community.

Facilities

The Director of Drama will have the privilege of working within outstanding facilities. Our professional, 160-seater Julian Slade Theatre, complete with green room and changing facilities, provides an exceptional environment for student performances. Additionally, a fully equipped semi-sprung dance studio and a well-resourced Drama library support the diverse needs of our curriculum and productions.



The Position

This post would ideally suit either an existing Director of Drama, or equally an impressive Teacher of Drama looking to move up to a leadership role.

Main Responsibilities and Tasks

Teaching and Learning

- Plan, deliver and review academically challenging and inspirational lessons
- Contribute significantly to the development of the Drama provision at Prior Park
- Ensure lessons meet the needs of individual students in accordance with advice from the SENCO Medical team, and House staff
- Assessing, recording, and reporting on the development and attainment of students in line with department policy
- Organising and participating in subject focused extra-curricular activities

Continuing Professional Development

- To ensure up to date knowledge of educational issues and trends
- To identify training needs in consultation with the Head of Department
- To participate in the induction programme as required by the Deputy Head

Parents

- To prepare academic reports, provide subject information to parents, attendance at Parents' Evenings and response to subject related parental enquiries

General Duties

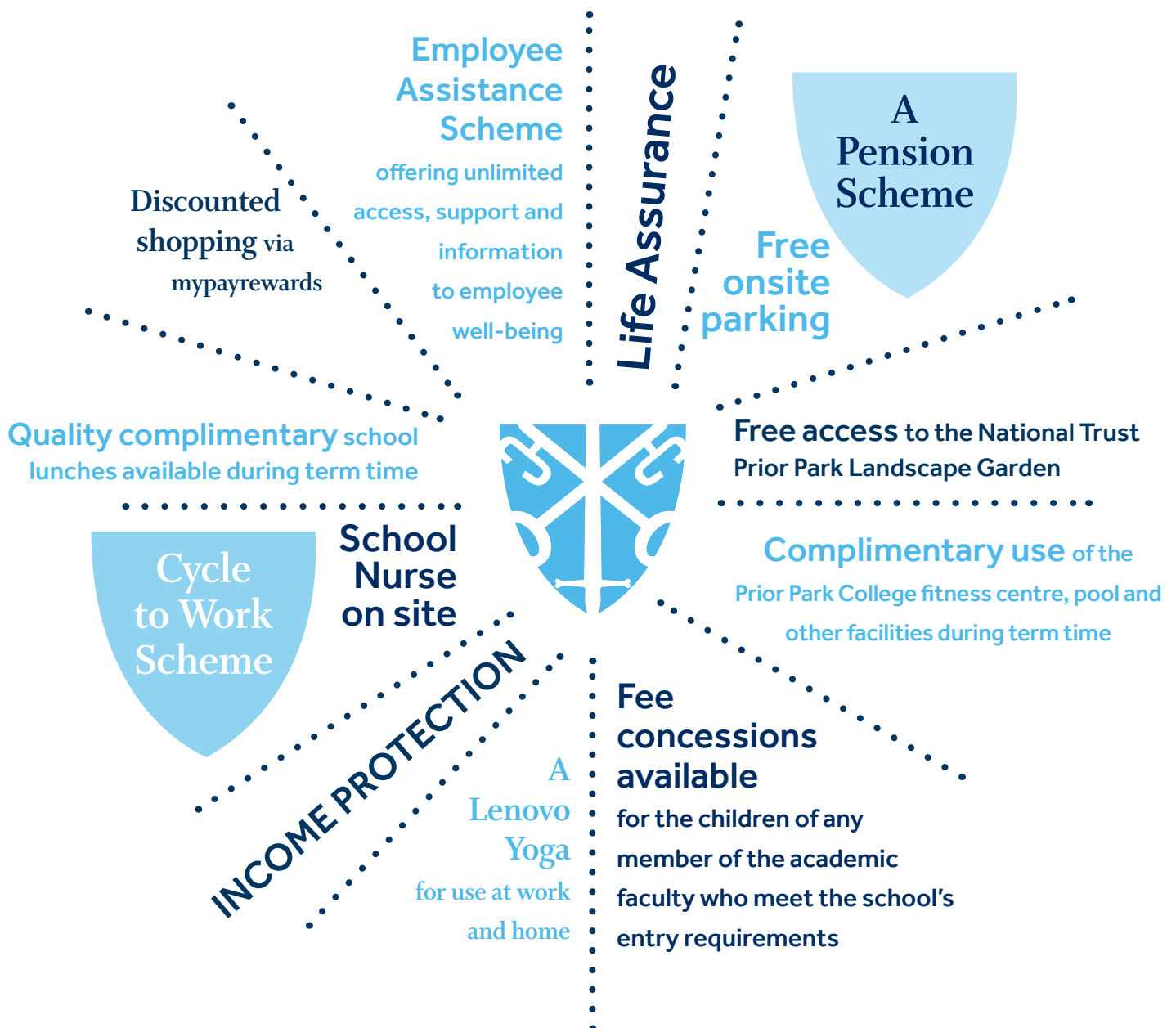
- To contribute to the extra-curricular programme of the school, which may include evenings and weekends
- To act as a House tutor in being part of a team reporting to a Housemaster/ Housemistress and making a full contribution to House associated events
- To adhere to and implement the school's behaviour policy
- Participate in the system of cover for absent colleagues
- To be familiar with the Common Room Handbook and school guidance policies
- To ensure that Health and Safety procedures are followed

Please note this list is not exhaustive and other additional, reasonable tasks falling within the capabilities of the post holder may be required, depending on the needs of the College.



The Benefits - Why Prior Park College?

There is an extensive induction programme for all new colleagues and we encourage ongoing professional development through generous CPD provision at a school, department and individual level. Individual support and coaching for career progression, internally and externally, is provided by members of the Senior Management Team. Apart from working in an inspiring environment and making an important contribution to our School community, we also offer a range of personal benefits, these include:



The Benefits - Why Bath?

Reasons why it's great to live and work in Bath

Local Economy

Bath has many strengths to support economic growth; an enviable quality of life; a World Heritage city; two high quality Universities; a strong Further Education sector and a well-qualified workforce. Forecasts suggest continued confidence in the area with ongoing growth and investments for the next few years.

Culture

For its size, Bath is a vibrant and cosmopolitan city with plenty of independent shops, restaurants and cultural attractions. Start your day with brunch in an artisan bakery, take a dip in Bath's natural thermal waters at the Spa and finish with a show at the Theatre Royal. It is also the only UK city to be designated a UNESCO World Heritage Site.

Quality of life

Bath has been voted the UK's most family friendly City in which to live (moneysupermarket) and offers a lifestyle to rival any of the UK's big cities. It has an incredible range of leisure and cultural activities. Employment rates are above average and public services and transport links are excellent. Surrounded by beautiful Georgian architecture and stunning countryside, it has something for everyone, making Bath one of the most desirable places to live and work.



Transport

With Bath city centre being fairly compact and largely pedestrianised, it's easy to walk around the city to visit its most popular attractions. However, it is also fully equipped with a series of bus services available along with the Bath Spa railway station located in the city centre, with plenty of trains that connect the city to the rest of the district and beyond. You can be in London in an hour and a half and Bristol in 15 minutes. But it is the little villages and towns surrounding Bath that make great day trips.

Surrounded by nature

With an array of parks, Notably Victoria Park, Henrietta Park and Alexandra Park – the latter with its magnificent panoramic views of the city, and hills accompanying the famous Georgian landscape, Bath makes for a very attractive, green city.

Sustainability

Bath practises and promote sustainable management, understanding the World Heritage Site's unique qualities and its world-wide significance.

The Process

To apply for this role, please complete our application form which can be downloaded from the school website <https://www.priorparkcollege.com/pps-vacancies>

Applications should be emailed to the HR Department: recruitment@priorparkschools.com

Closing date for applications is midday on Monday 22 April 2024

Interview date - TBC

References of those invited to interview will be taken up.

For an informal chat or to answer any questions relating to this position, please contact:

recruitment@priorparkschools.com or 01225 835353 (HR – option 4)

Child Protection

Prior Park Schools is committed to safeguarding and promoting the welfare of children. Applicants must be willing to undergo child protection screening appropriate to the post, including checks with past employers and the Disclosure and Barring Service.

This post is exempt from the Rehabilitation of Offenders Act 1974 and the school is therefore permitted to ask job applicants to declare all convictions and cautions (including those which are "spent" unless they are "protected" under the DBS filtering rules) in order to assess their suitability to work with children.

Data Protection

In the course of employment at Prior Park Educational Trust, staff may have access to confidential information relating to pupils and their families and are required to exercise due consideration in the way they use such information. Staff should not act in any way which might be prejudicial to the School's interest. Information which may be included in the category covers both the general business of the school and information regarding specific individuals. A strict code of confidentiality must be adhered to at all times. The School is registered under the Data Protection Act 2018 and operates under policies that meet General Data Protection Regulations (GDPR). Staff must not at any time use the personal data held by the school or disclose such data to a third person.





Prior Park College



Ralph Allen Drive, Bath BA2 5AH
Tel: +44 (0)1225 835 353
Email: office.ppc@priorparkschools.com
priorparkcollege.com