

PASADENA UNIFIED SCHOOL DISTRICT

MASTER PLANNING COMMITTEE MEETING

July 29, 2019 at 3:30

Conference Room 229  
351 S. Hudson Avenue  
Pasadena, CA 91101

Teleconference Location:  
Seattle, Washington

NOTICE AND AGENDA

**Committee Purpose:**

In order to provide robust, quality programs at each of our schools, in a fiscally stable manner in spite of a declining enrollment environment, the Master Planning and Boundaries committee will review existing site programs and capacities and future expected enrollment and bring to the board recommendations on the number and location of school sites to maintain for the next 5 to 10 years.

	<b>Topic/Subject</b>	<b>Who (leader)</b>	<b>Time</b>	<b>Outcome</b>
1.	<b>Call to Order/Welcome/Agenda Review</b>	Chair	1 min.	
2.	<b>Public Comment</b>	Members of the Public	5 min.	Views of the public are heard.
3.	<b>Approval of Minutes from 7/2/19</b>	Chair	5 min.	Approved minutes with any corrections needed.
4.	<b>Scenario Viability – Narrow down choices</b>	Committee	30 min.	Using capacity and enrollment projections, confirm which scenarios are viable and eliminate others.
5.	<b>Elementary Sites – Start discussion of approach to use</b>	Committee	20 min.	Determine target range for number of sites and how to approach developing scenarios.
6.	<b>Discuss process and steps for August and September</b>	Committee and Dr. Barnes	20 min.	Determine next steps in process, who is responsible and timeline.
7.	<b>Next Meeting dates: 8/12 and 8/26</b>			Reaffirm next two meeting dates
	<b>Adjournment</b>			

Master Planning - Work Plan- DRAFT

<b>Task</b>	<b>Responsible</b>	<b>Start/End Date</b>	<b>Notes/Comments</b>
Determine purpose of committee	Committee/Brd	12/10/18-2/7/19	
<b>Build case for fewer schools that will lead to better quality education</b>			
Create core program document	?		
Create cost savings document	?		
Create list of programs by school document	?		
<b>Factors/Criteria</b>			
Committee selection of factors	Committee	4/22/19	
Board consensus on factors	Board	5/23/19	
Input from ELT on factors	ELT	5/23/19 to 6/3/19	
Board approval of final factors	Board	6/27/19	
<b>Scenarios</b>			
Publish list of standard scenarios	Committee	2/25/19 – 4/8/19	
Add initial pros and cons to scenarios for HS	ELT		
Narrow down secondary scenarios using space viability			
Add pros/cons (based on factors) to MS list			
Narrow down both MS and HS lists to 4 to 5 options for the committee			
Committee reviews 4-5 options for secondary and selects 2-3 to take to full board			
Create scenario list for elementary and fill in pros/cons			
Narrow down elementary scenario list to 4 or 5 options for committee to consider			
Committee reviews 4-5 options for elementary and selects 2-3 to take to full board			
<b>Community Engagement</b>			
Set up email for community feedback/ideas	ITS	5/10 – 5/25/19	
Publish email in community announcement			
<b>Transition Planning</b>			

**July 2, 2019**

**Master Plan/Boundary Subcommittee Minutes**

**Board Members Present:** Chair Kim Kenne, Michelle Bailey (Patrick Cahalan: Absent)

**Staff:** Dr. Leslie Barnes

**Call to Order:** Chair Kim Kenne at 3:41 pm

**Public Comment:** Beverly Rodriguez, Muir teacher – academy program award recipient

**Approval of Minutes:** The minutes of June 3, 2019, were approved. Ms. Bailey moved and Ms. Kenne seconded.

**DISCUSSION:**

Brief Updates:

- ***Factors Update***  
The full board approved five primary and two secondary factors at its June 27 meeting.
- ***Secondary Principal Meeting Update***  
Ms. Bailey stated that the meeting was productive and the group was able to list programs at each secondary school.
- ***Executive Leadership Team (ELT) Meeting Update***  
Ms. Kenne stated that the group discussed the various scenarios and viability charts, using projections and capacity.

Scenario Viability

With regard to secondary, projections from Davis Demographics were reviewed using five years as seven years were felt to be too far out. Capacity numbers were arrived at using WLC and staff. The target capacity percentage being used in the viability process is 85%. The PCC room usage at Muir was not included in Muir's capacity. Negative viability was marked with an "N" after discussions with ELT. Ms. Bailey requested that all backup documents be posted with final documents. Ms. Kenne suggested placing this task on the work plan. Ms. Kenne stated that projections done in 2014-15 for the 2018-19 school year were off by only 200 students. Scenarios will be narrowed down by factors/pros-cons.

Elementary Sites

Ms. Bailey requested that elementary principals be allowed to provide input, similar to the secondary process. With regard to the viability chart, how many schools should be kept open considering the total student population? There is a broad range. A heat map was presented, depicting PUSD students in TK-5 in 2018-19 by residence. Ms. Bailey asked for a similar heat map for secondary students. Ms. Kenne explained that it is important to review elementary as transportation is more of an issue for those young students versus older students. A member of public asked about a similar map showing all school age students, not just PUSD. Discussion ensued about attracting more students to the district. Ms. Kenne stated that quality schools with more resources through consolidation would attract more students. Member of the public, Felita Kealing, asked about progression maps. Ms. Kenne will look into this request. Ms. Bailey would like a positive approach with regard to changes, showing viable programs. Ms. Kenne stated that the district is already making cuts without being in a recession and realizing that right-sizing is

unavoidable. A member of the public asked what the growth plan is; do we continue to retreat or improve with cuts? How do other school districts plan without cuts? Ms. Kenne stated that by right-sizing, monies realized can fund better services and programs. CBO Barnes stated that we are currently in a silent recession, still recovering from the previous real recession. A member of the public suggested that we need a resource density category in order to be attractive to parents. Member of the public Zella Knight stated that LCFF monies are not new monies; the housing issue should be reviewed with the City of Pasadena. Member of the public Beverly Rodriguez stated that promotion of the district is being done by teachers; the district should do more with banners, commercials, etc. Ms. Bailey asked how the district will benefit with the work done, since only negativity gets out to the public. A member of the public asked if any PUSD property was currently not in use and will be offered for sale. Ms. Kenne stated that we are currently leasing schools to private schools and charters and are considering a property swap for the district office building. CBO Barnes stated that sale of district property is complicated; any monies received must be used for construction. Funds from leased property can go directly into the general fund. Member of the public Joe Auch reiterated the need for better marketing of the district; property owners who send their children to private schools should know they're paying double for education. Ms. Kenne stated that 45% of all students in the district do not attend PUSD.

Ms. Kenne provided a work plan which included task name and responsible party to get future work done, with a timetable. Ms. Bailey would like to know staff recommendations for consolidation. CBO Barnes will take the work plan back to ELT for implementation. Ms. Kenne would like ELT to narrow down the list, followed by this subcommittee's further narrowing. Member of the public Felita Kealing asked for further research into why private school students are transferring to public schools; this information should be captured. Member of the public Natasha Mahone stated that the reason is usually financial; there are not enough students transferring for a case study. Staff may be able to vet this request. Member of the public Felita Kealing suggesting the creation of a slogan. Muir principal Lawton Gray stated again that folks are in disarray about high schools, and now elementary schools are being looked at; it might be more beneficial to finish secondary high schools first. Member of the public Nancy Dufford observed that the meeting was for public observing only with less interaction with the public; the agenda should be adhered to. Member of the public Judy McKinley suggested that librarians be included in the subcommittee's conversations. Ms. Kenne stated the goal is to get a handle on secondary in four to five weeks (by the end of July) with elementary options narrowed down by the end of August. Options/scenarios being eliminated should have the reasons documented.

#### Next Meetings

The next meetings will be on July 29, August 12 (which may move to August 13<sup>th</sup> since the 12<sup>th</sup> is first day of school) and August 26.

Member of the public Natasha Mahone stated that the district should have a K-12 plan for pathways, complementing programs. This could be a positive marketing tool. Member of the public Steve Cole suggested that all grade levels be looked at holistically, not separate conversations. Ms. Kenne stated that all recommendations will go to the full board as a package.

#### Adjournment

The meeting was adjourned at 6:02 p.m.

PUSD School Capacity Summary - Secondary  
 (Excludes McKinley, Focus Point, CIS and Rose City spaces)

MS Capacity -

	Perm CR	Port CR	Vacant/		Use-		Total Capacity	90% Capacity	Enroll 18-19	Excess/ (Shortage)	% Capacity Usage	Assume all regular use (no SDC)	
			In Use	Other use	Reg.	SDC						Total Capacity	85% Capacity
Blair MS	23	0	17	6	23	0	690	621	450	171	65.2%	690	587
Eliot	46	0	19	27	42	4	1320	1188	513	675	38.9%	1380	1173
Sierra Madre	29	0	17	12	25	4	810	729	554	175	68.4%	870	740
Washington	43	0	22	21	40	3	1245	1121	450	671	36.1%	1290	1097
Wilson	51	0	19	32	48	3	1485	1337	458	879	30.8%	1530	1301
<b>Total</b>	<b>169</b>	<b>0</b>	<b>77</b>	<b>92</b>	<b>155</b>	<b>14</b>	<b>4860</b>	<b>4374</b>	<b>1975</b>	<b>2399</b>	<b>40.6%</b>	<b>5760</b>	<b>4896</b>

HS Capacity -

	Perm CR	Port CR	Vacant/		Use-		Total Capacity	90% Capacity	Enroll 18-19	Excess/ (Shortage)	% Capacity Usage	Assume all regular use (no SDC)	
			In Use	Other use	Reg.	SDC						Total Capacity	85% Capacity
Blair HS	31	0	29	2	31	0	930	837	527	310	56.7%	930	791
Marshall 6-12	75	0	61	14	71	4	2190	1971	1971	0	90.0%	2250	1913
Muir	55	7	36	26	58	4	1800	1620	876	744	48.7%	1860	1581
PHS	107	3	90	20	109	1	3285	2957	1736	1221	58.7%	3300	2805
<b>Total</b>	<b>268</b>	<b>10</b>	<b>216</b>	<b>62</b>	<b>269</b>	<b>9</b>	<b>8205</b>	<b>7384.5</b>	<b>5110</b>	<b>2275</b>	<b>62.3%</b>	<b>8340</b>	<b>7089</b>

Total 437 10 293 154 424 23 13,065 11,759 7085 4674 54.2%

Capacity taken from revised capacity sheets with vacant/other use added in (using loading factor of 26 for K-5, 30 for 6-12 and 15 for SDC)

All vacant/other use rooms are included in capacity until staff/committee determines which are not available for classroom usage.

Note: Analysis of capacity based on non-classroom shared spaces has not been done yet.

## Enrollment Projection by Grade Span for Master Planning

### Total Student Enrollment Projections

	Current 18-19	1 yr 19-20	5 yr 23-24	7 yr 25-26	Current to 7 year Change % Change	
<b>TK-5</b>						
Resident	7,180	6,916	6,270	6,284	-896	-12.5%
Out Distr.	460	460	460	460	0	0.0%
SPED SDC	195	188	170	171	-24	-12.3%
Unmatched	9	9	9	9	0	0.0%
<b>Total TK-5</b>	<b>7,844</b>	<b>7,573</b>	<b>6,909</b>	<b>6,924</b>	<b>-920</b>	<b>-11.7%</b>
<b>6-8</b>						
Resident	3324	3299	2962	2715	-609	-18.3%
Out Distr.	162	162	162	162	0	0.0%
SPED SDC	177	176	158	145	-32	-18.1%
Unmatched	4	4	4	4	0	0.0%
<b>Total 6-8</b>	<b>3667</b>	<b>3641</b>	<b>3286</b>	<b>3026</b>	<b>-641</b>	<b>-17.5%</b>
<b>9-12</b>						
Resident	4039	3979	3828	3671	-368	-9.1%
Out Distr.	135	135	135	135	0	0.0%
SPED SDC	244	240	231	222	-22	-9.0%
Ind. Study	230	227	218	209	-21	-9.1%
Unmatched	4	4	4	4	0	0.0%
<b>Total 9-12</b>	<b>4652</b>	<b>4585</b>	<b>4416</b>	<b>4241</b>	<b>-411</b>	<b>-8.8%</b>
<b>TK-12</b>						
Resident	14543	14193	13060	12670	-1,873	-12.9%
Out Distr.	757	757	757	757	0	0.0%
SPED SDC	616	604	559	537	-79	-12.8%
Ind. Study	230	227	218	209	-21	-9.1%
Unmatched	17	17	17	17	0	0.0%
<b>Total TK-12</b>	<b>16163</b>	<b>15798</b>	<b>14611</b>	<b>14190</b>	<b>-1,973</b>	<b>-12.2%</b>
	Current 18-19	1 yr 19-20	5 yr 23-24	7 yr 25-26	Current to 7 year Change % Change	
HS - Less Alternative School students (Rose City and CIS)						
9-12 total	4652	4585	4416	4241		
CIS	205	205	205	205		
RCHS	176	180	180	180		
Non-alt HS	4271	4200	4031	3856		

Source: Davis Demo Draft Report - May 7, 2019

Master Planning Scenario Viability Check - High School								
				Using 2023-24 Proj				
Scenario		Proj Students 19-20	Proj Students 23-24	Est Capacity	Over/Under	Over/Under %	Viability?	Notes
1A	Current 4 HS with 6-12/9-12	4200	4031	6239	2208	35.4%		Assumes just Blair HS campus and room for 850 MS at Marshall
1B	4 HS - all 6/12	7841	7317	7676	359	4.7%		Assumes all 6-12 at the 4 schools
2A	3 HS - PHS, Muir, Marshall	4200	4031	6299	2268	36.0%		Assumes Marsall 100% HS
2A	3 HS - PHS, Muir, Marshall	4200	4031	5449	1418	26.0%		Assumes room for 850 MS at Marshall
2B	3 HS - PHS, Muir, Blair	4200	4031	5177	1146	22.1%		Assumes just Blair HS campus included
2B	3 HS - PHS, Muir, Blair	4200	4031	5763	1732	30.1%		Assumes both Blair HS and MS campus included
2C	3 HS - PHS, Marshall, Blair	4200	4031	6095	2064	33.9%		Assumes Blair and Marshall 100% HS
2C	3 HS - PHS, Marshall, Blair	4200	4031	5508	1477	26.8%		Assumes only Blair HS and Marshall 100% HS
2C	3 HS - PHS, Marshall, Blair	4200	4031	4658	627	13.5%		Assumes only Blair HS and room for 850 MS at Marshall
2C	3 HS - PHS, Marshall, Blair	4200	4031	5245	1214	23.1%		Assumes Blair 100% HS and room for 850 MS at Marshall
2D	3 HS - Marshall, Muir, Blair	4200	4031	4871	840	17.2%		Assumes Blair and Marshall 100% HS
2D	3 HS - Marshall, Muir, Blair	4200	4031	4284	253	5.9%		Assumes only Blair HS and Marshall 100% HS
2D	3 HS - Marshall, Muir, Blair	4200	4031	4021	-11	-0.3%	N	Assumes Blair 100% HS and room for 850 MS at Marshall
3A	2 HS - PHS and Muir	4200	4031	4386	355	8.1%		
3B	2 HS - Marshall and Muir	4200	4031	3494	-538	-15.4%	N	Assumes Marsall 100% HS
3C	2 HS - Marshall and PHS	4200	4031	4718	687	14.6%		Assumes Marsall 100% HS
3D	2 HS - PHS and Blair	4200	4031	4182	151	3.6%		Assumes Blair 100% HS
3E	2 HS - Blair and Marshall	4200	4031	3290	-742	-22.5%	N	Assumes Blair and Marshall 100% HS
3F	2 HS - Blair and Muir	4200	4031	2958	-1073	-36.3%	N	Assumes Blair 100% HS
4A	1 HS - PHS	4200	4031	2805	-1226	-43.7%	N	
4B	1 HS - Muir	4200	4031	1581	-2450	-155.0%	N	

PUSD School Capacity Summary

Elementary Capacity - TK-5

	Perm CR	Port CR	In Use	Vacant/ Other use	Total Capacity	90% Capacity	Enroll 18-19	Excess/ (Shortage)	% Capacity Usage	85% Capacity
Altadena	20	0	12	8	520	468	225	295	43.3%	442
Cleveland	22	0	10	12	572	515	97	475	17.0%	486
Don Benito	24	12	25	11	936	842	554	382	59.2%	796
Field	24	5	24	5	754	679	489	265	64.9%	641
Franklin	20	2	12	10	572	515	182	390	31.8%	486
Hamilton	23	3	25	1	676	608	605	71	89.5%	575
Jackson	25	7	27	5	832	749	634	198	76.2%	707
Jefferson	34	8	17	25	1092	983	383	709	35.1%	928
Longfellow	30	0	19	11	780	702	437	343	56.0%	663
Madison	32	0	20	12	832	749	401	431	48.2%	707
McKinley TK-8	51	0	37	14	1326	1193	973	353	73.4%	1127
NCAS	22	4	20	6	676	608	382	294	56.5%	575
Roosevelt	20	2	16	6	572	515	281	291	49.1%	486
San Rafael	18	5	19	4	598	538	440	158	73.6%	508
Sierra Madre	32	1	30	3	858	772	689	169	80.3%	729
Wash Acc	44	2	25	21	1196	1076	494	702	41.3%	1017
Webster	27	3	18	12	780	702	345	435	44.2%	663
Willard	34	2	28	8	936	842	634	302	67.7%	796
<b>Total</b>	<b>502</b>	<b>56</b>	<b>384</b>	<b>174</b>	<b>14508</b>	<b>13057</b>	<b>8245</b>	<b>6263</b>	<b>56.8%</b>	<b>12332</b>

Capacity taken from revised capacity sheets with vacant/other use added in (using loading factor of 26 for K-5, 30 for 6-12 and 15 for SDC)  
 All vacant/other use rooms are included in capacity until staff/committee determines which are not available for classroom usage.

Note: Analysis of capacity based on non-classroom shared spaces has not been done yet.



Master Planning Scenario Viability Check - Elementary School

Scenario	Using 2023-24 Proj					Viable?	Notes
	Proj Students 19-20	Proj Students 23-24	Est Capacity	Over/ Under	Over/ Under %		
Current - 18 schools	7,573	6,909	11932	5023	42.1%		All 18 schools (incl. Cleveland)-assume 40 MS at Mck.
With 13 schools	7,573	6,909	7669	760	9.9%		Removed 5 largest (Includes McKinley)
With 10 schools	7,573	6,909	7733	824	10.7%		Removed 8 smallest (assume 400 MS at McKinley)

Master Planning Scenario Viability Check - Middle School								
				Using 2023-24 Proj				
Scenario	Proj Students 19-20	Proj Students 23-24	Est Capacity	Over/Under	Over/Under %	Viability?	Notes	
1A	Current - 7 options	3641	3286	6146	2860	46.5%	Assumes 850 MS at Marshall and 400 at McKinley	
2A	4 Stand Alone MS	3641	3286	4310	1024	23.7%	No McKinley, Marshall or Blair MS	
3A	3 MS - Eliot, Wash MS, Wilson	3641	3286	3570	284	8.0%	No McKinley, Marshall or Blair MS	
3B	3 MS - Eliot, Wash MS, SMMS	3641	3286	3009	-277	-9.2%	N No McKinley, Marshall or Blair MS	
3C	3 MS - Wash MS, Wilson, SMMS	3641	3286	3137	-150	-4.8%	N No McKinley, Marshall or Blair MS	
3D	3 MS - Wilson, SMMS, Eliot	3641	3286	3213	-73	-2.3%	N No McKinley, Marshall or Blair MS	
4A	2 MS - Wash MS, Wilson	3641	3286	2397	-889	-37.1%	N No McKinley, Marshall or Blair MS	
4B	2 MS - Wash MS, SMMS	3641	3286	1836	-1450	-79.0%	N No McKinley, Marshall or Blair MS	
4C	2 MS - Wilson, SMMS	3641	3286	2040	-1246	-61.1%	N No McKinley, Marshall or Blair MS	
4D	2 MS - Eliot, SMMS	3641	3286	1913	-1374	-71.8%	N No McKinley, Marshall or Blair MS	
4E	2 MS - Eliot, Wilson	3641	3286	2474	-813	-32.8%	N No McKinley, Marshall or Blair MS	
4F	2 MS - Eliot, Wash MS	3641	3286	2270	-1017	-44.8%	N No McKinley, Marshall or Blair MS	
5A	4 MS, 2 6-12	3641	3286	5746	2460	42.8%	No McKinley, 850 at Marshall, Blair MS only	
6A	2 6-12, 3 MS-Eliot, Wash, Wilson	3641	3286	5007	1721	34.4%	No McKinley, 850 at Marshall, Blair MS only	
6B	2 6-12, 3 MS-Eliot, Wash, SMMS	3641	3286	4446	1160	26.1%	No McKinley, 850 at Marshall, Blair MS only	
6C	2 6-12, 3 MS-SMMS, Wash, Wilson	3641	3286	4573	1287	28.1%	No McKinley, 850 at Marshall, Blair MS only	
6D	2 6-12, 3 MS-Eliot, SMMS, Wilson	3641	3286	4650	1364	29.3%	No McKinley, 850 at Marshall, Blair MS only	
7A	2 6-12, 2 MS - Wash, Wilson	3641	3286	3834	548	14.3%	No McKinley, 850 at Marshall, Blair MS only	
7B	2 6-12, 2 MS - Wash, SMMS	3641	3286	3273	-14	-0.4%	N No McKinley, 850 at Marshall, Blair MS only	
7C	2 6-12, 2 MS - SMMS, Wilson	3641	3286	3477	191	5.5%	No McKinley, 850 at Marshall, Blair MS only	
7D	2 6-12, 2 MS - Eliot, SMMS	3641	3286	3349	63	1.9%	N No McKinley, 850 at Marshall, Blair MS only	
7E	2 6-12, 2 MS - Eliot, Wilson	3641	3286	3910	624	16.0%	No McKinley, 850 at Marshall, Blair MS only	
7F	2 6-12, 2 MS - Wash, Eliot	3641	3286	3706	420	11.3%	No McKinley, 850 at Marshall, Blair MS only	
8A	Blair 6-12, 4 MS	3641	3286	4896	1610	32.9%	Blair MS only	

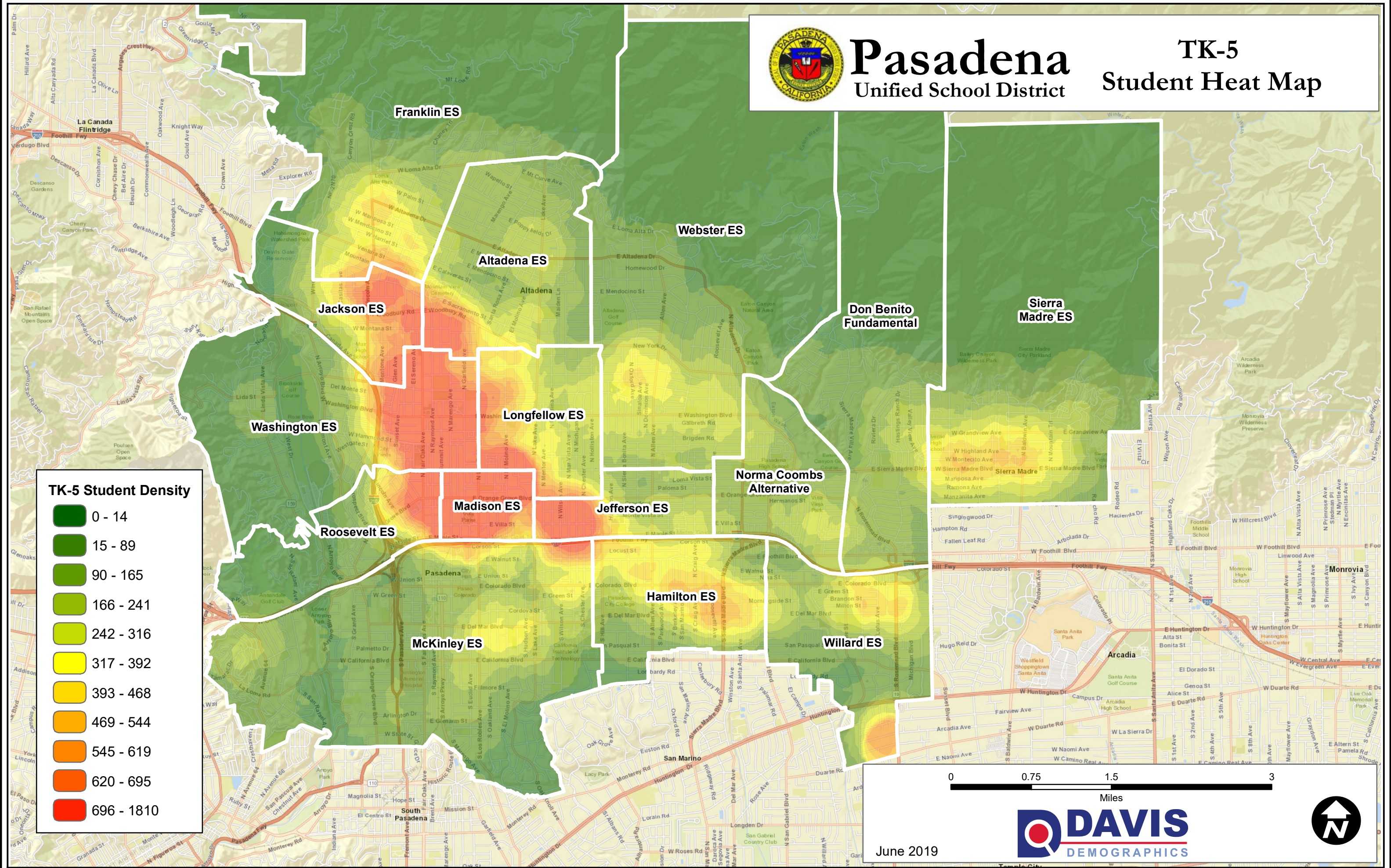
Master Planning Scenario Viability Check - Middle School								
				Using 2023-24 Proj				
Scenario		Proj Students 19-20	Proj Students 23-24	Est Capacity	Over/Under	Over/Under %	Viability?	Notes
8B	Marshall 6-12, 4 MS	3641	3286	5160	1874	36.3%		Assumes 850 MS at Marshall
9A	Blair 6-12, 3 MS-Eliot,Wash, Wilson	3641	3286	4157	871	20.9%		Blair MS only
9B	Blair 6-12, 3 MS-Eliot,Wash, SMMS	3641	3286	3596	310	8.6%		Blair MS only
9C	Blair 6-12, 3 MS-SMMS,Wash, Wilson	3641	3286	3723	437	11.7%		Blair MS only
9D	Blair 6-12, 3 MS-Eliot,SMMS, Wilson	3641	3286	3800	514	13.5%		Blair MS only
9E	Marshall 6-12, 3 MS-Eliot,Wash, Wilson	3641	3286	4420	1134	25.7%		Assumes 850 MS at Marshall
9F	Marshall 6-12, 3 MS-Eliot,Wash, SMMS	3641	3286	3859	573	14.8%		Assumes 850 MS at Marshall
9G	Marshall 6-12, 3 MS-SMMS,Wash, Wilson	3641	3286	3987	701	17.6%		Assumes 850 MS at Marshall
9H	Marshall 6-12, 3 MS-Eliot,SMMS, Wilson	3641	3286	4063	777	19.1%		Assumes 850 MS at Marshall
10A	Blair 6-12, 2 MS - Wash MS, Wilson	3641	3286	2984	-303	-10.1%	N	Blair MS only
10B	Blair 6-12, 2 MS - Wash MS, SMMS	3641	3286	2423	-864	-35.6%	N	Blair MS only
10C	Blair 6-12, 2 MS - Wilson, SMMS	3641	3286	2627	-660	-25.1%	N	Blair MS only
10D	Blair 6-12, 2 MS - Eliot, SMMS	3641	3286	2499	-787	-31.5%	N	Blair MS only
10E	Blair 6-12, 2 MS - Eliot, Wilson	3641	3286	3060	-226	-7.4%	N	Blair MS only
10F	Blair 6-12, 2 MS - Eliot, Wash MS	3641	3286	2856	-430	-15.1%	N	Blair MS only
10G	Marshall 6-12, 2 MS - Wash MS, Wilson	3641	3286	3247	-39	-1.2%	N	Assumes 850 MS at Marshall
10H	Marshall 6-12, 2 MS - Wash MS, SMMS	3641	3286	2686	-600	-22.3%	N	Assumes 850 MS at Marshall
10I	Marshall 6-12, 2 MS - Wilson, SMMS	3641	3286	2890	-396	-13.7%	N	Assumes 850 MS at Marshall
10J	Marshall 6-12, 2 MS - Eliot, SMMS	3641	3286	2763	-524	-19.0%	N	Assumes 850 MS at Marshall
10K	Marshall 6-12, 2 MS - Eliot, Wilson	3641	3286	3324	38	1.1%	N	Assumes 850 MS at Marshall
10L	Marshall 6-12, 2 MS - Eliot, Wash MS	3641	3286	3120	-167	-5.3%	N	Assumes 850 MS at Marshall



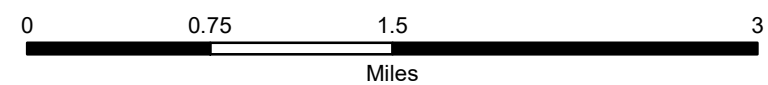
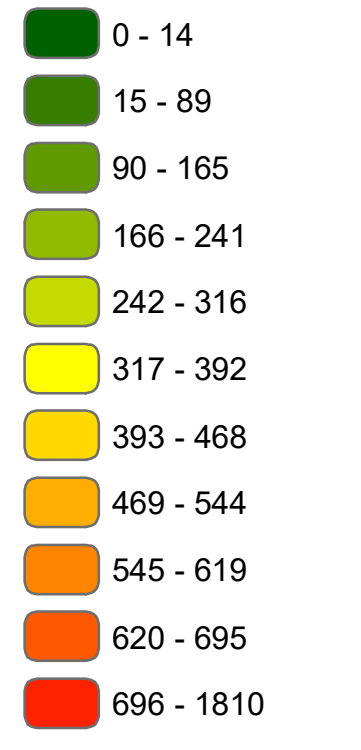


# Pasadena Unified School District

## TK-5 Student Heat Map



### TK-5 Student Density



June 2019

