

PASADENA UNIFIED SCHOOL DISTRICT
 MASTER PLANNING COMMITTEE MEETING

September 3, 2019 at 3:30

Conference Room 229
 351 S. Hudson Avenue
 Pasadena, CA 91101

NOTICE AND AGENDA

Committee Purpose:

In order to provide robust, quality programs at each of our schools, in a fiscally stable manner in spite of a declining enrollment environment, the Master Planning and Boundaries committee will review existing site programs and capacities and future expected enrollment and bring to the board recommendations on the number and location of school sites to maintain for the next 5 to 10 years.

	Topic/Subject	Who (leader)	Time	Outcome
1.	Call to Order/Welcome/Agenda Review	Chair	1 min.	
2.	Approval of Minutes from 7/29/19	Chair	5 min.	Approved minutes with any corrections needed.
3.	Introduction by Dr. Verdugo	Dr. Verdugo	10 min	Understanding of staff perspective and commitment to this process
4.	Brief Updates <ul style="list-style-type: none"> - Final Davis Demographic Report - Communications Update 	Committee	15 min.	Updated understanding of status of each area and next steps, in any.
5.	Format for presenting alternatives	Committee	15 min.	Agree on format for staff to fill in so that alternatives can be presented
6.	Elementary Alternatives	Committee	40 min.	Looking at capacity and enrollment and school characteristics, select elementary options for staff to flesh out and to be taken to the full board on September 19 th
7.	Next Meeting dates:	Committee		Discuss options for next meeting date
8.	Public Comment	Members of the Public	5 min.	Views of the public are heard.
	Adjournment			

July 29, 2019

Master Plan/Boundary Subcommittee Minutes

Board Members Present: Chair Kim Kenne, Michelle Bailey, Patrick Cahalan

Staff: Dr. Leslie Barnes

Call to Order: Chair Kim Kenne at 3:36 pm

Public Comment: None

Approval of Minutes: The minutes of July 2, 2019, were approved. Mr. Cahalan moved and Ms. Bailey seconded.

DISCUSSION:

Scenario Viability

Ms. Kenne suggesting using the five factors approach to narrow down the subcommittee choices for consolidation to two to three sites. Mr. Cahalan suggested removal of any sites with over/under capacity under 10% to further narrow down the choices – these would include 3D, 2D and 3A. He also requested the following language “capacity number assumes no other middle school” be included on the chart. Ms. Bailey asked when the subcommittee would be receiving staff recommendations and what the subcommittee timing is now. Dr. Barnes stated that the subcommittee should meet again with the Executive Leadership Team to share ELT’s recommendations. Ms. Bailey stated concern about the subcommittee recommendations not being in line with ELT’s recommendations; she reiterated that both groups need to work together. Members of the subcommittee then provided each member’s recommendations.

With regard to high schools, Ms. Kenne stated that keeping all four high schools open (1A) is doable provided everyone understands the tradeoffs – lack of athletics and staffing issues at some of the sites. She prefers 3A (two high schools only - PHS and Muir). Ms. Bailey and Mr. Cahalan prefer 2B-1 (three high schools – PHS, Muir and Blair). All subcommittee members discarded closure of PHS as a possibility. Mr. Cahalan stated that the high schools must be spread out across the district or there would be a need for better transportation and those costs must be considered before any action. Dr. Barnes will provide a ballpark figure to the subcommittee for the cost per 100 students – both for a 2 tier system and a 3 tier system. Mr. Cahalan suggested the possibility of all four high schools maintaining grades 6-8; however, Ms. Bailey was not in agreement, stating that neither PHS nor Muir should have these easily influenced students on a high school campus. The final recommendations are as follows: 1A (status quo), 1B (all four high schools would be 6-12), 2B-1 (three high schools only – PHS, Muir, Blair), and 3A (two high schools only – PHS and Muir).

With regard to middle schools, Ms. Kenne prefers 2A (four standalone middle schools) and 8A (Blair 6-12 plus 4 stand alone middle schools). Mr. Cahalan and Ms. Bailey are also in favor of 8A. Ms. Bailey is also in favor of 9A (Blair 6-12 plus Eliot, Washington and Wilson standalone middle schools). The committee members will continue to consider other options on the list.

With regard to elementary sites, Mr. Cahalan reviewed capacity by district sections (split up into 3 vertical sections) and traffic patterns and suggesting the closure of Don Benito with students directed to Norma Coombs. He also suggested the merging of Webster and Jefferson.

All justifications for decisions must be in writing by the end of August. The current timeline is to provide secondary school recommendations to the board at its August 29 meeting and elementary recommendations at a September 12 special meeting. The subcommittee will meet with the Executive Leadership Team on August 13 to hear ELT's recommendations.

Next Meeting

The next meeting will be on August 16 at 11 a.m.

Public Comment:

Bryant Mathew – Additional scenario: Close Marshall 9-12, close 2-3 middle schools, make Marshall a neighborhood school.

Amin Oria – Jefferson's capacity numbers are out of date; suggested subcommittee visits all sites under consideration.

Ms. Bailey suggested including elementary principals in review of capacity figures, similar to what was done with secondary principals.

Adjournment

The meeting was adjourned at 5:41 p.m.

<p>Master Planning Scenario #999-A Description:</p>	
<p>Rationale (based on Pros/Cons – see page 2)</p>	<p>Boundary Changes</p>
<p>Impact on Capacity</p>	<p>Feeder Pattern Changes</p>
<p>Program changes (including equity changes)</p>	<p>Transportation or Bell Schedule Changes</p>
<p>Impact on integration</p>	<p>Alternative uses for any non-school sites</p>

Pros	Cons
------	------

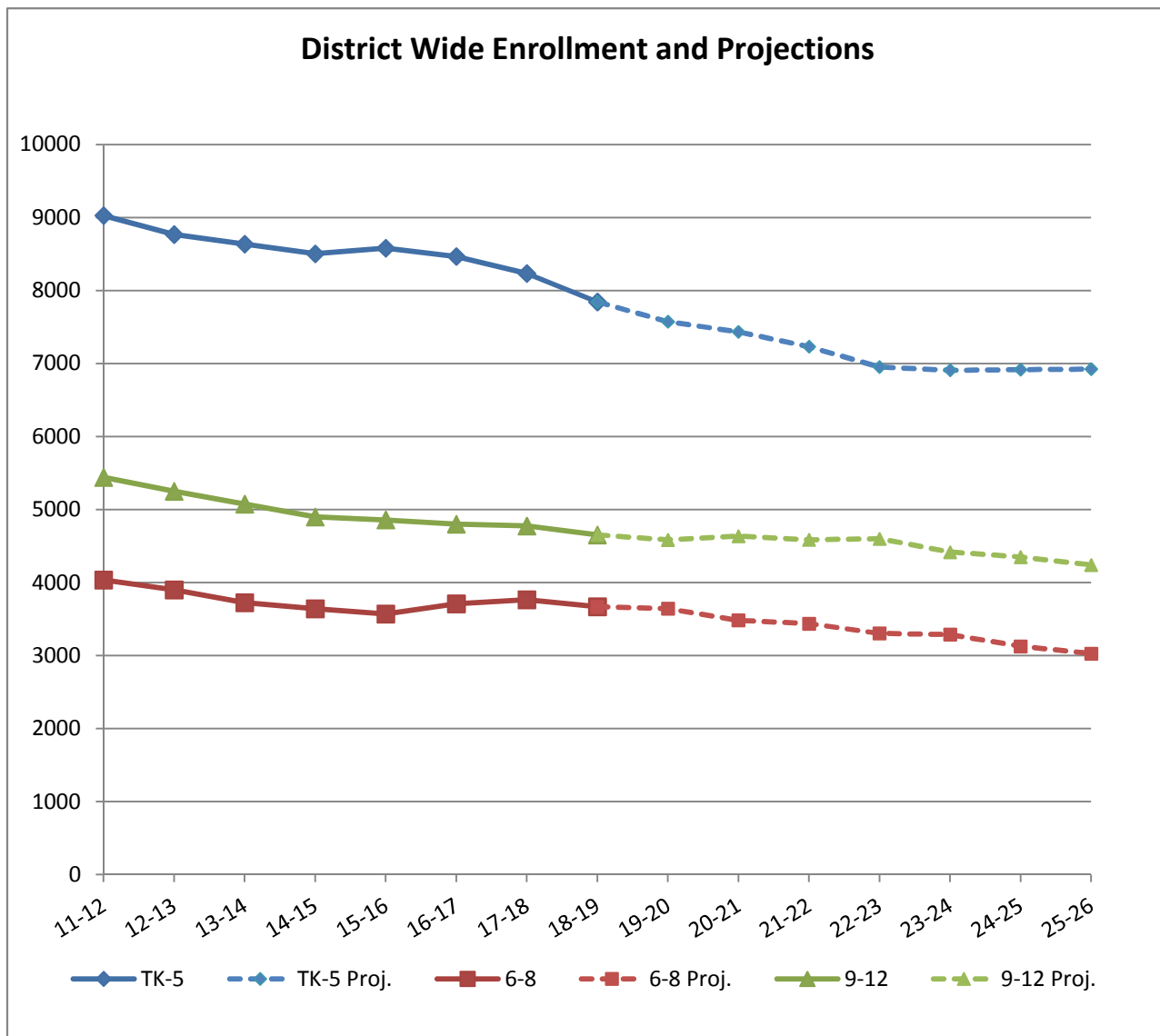
Master Planning Scenario Viability Check - Elementary School

Scenario	Using 2023-24 Proj					Viable?	Notes
	Proj Students 19-20	Proj Students 23-24	Est Capacity	Over/ Under	Over/ Under %		
Current - 18 schools	7,573	6,909	11932	5023	42.1%		All 18 schools (incl. Cleveland)-assume 40 MS at Mck.
With 13 schools	7,573	6,909	7669	760	9.9%		Removed 5 largest (Includes McKinley)
With 10 schools	7,573	6,909	7733	824	10.7%		Removed 8 smallest (assume 400 MS at McKinley)

Enrollment Projection by Grade Span for Master Planning

Total Student Enrollment Projections

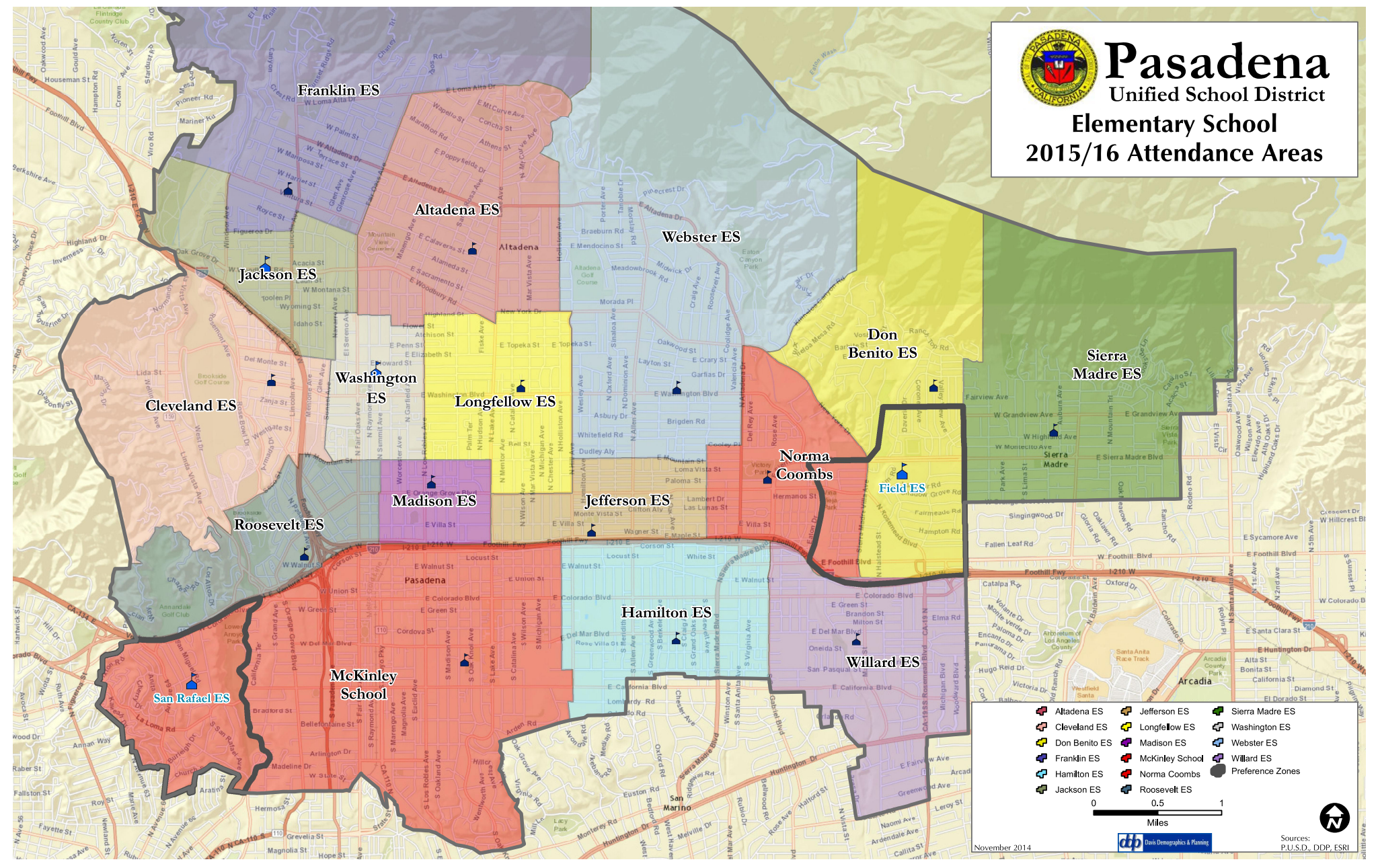
	Current	1 yr	5 yr	7 yr	Current to 7 year	
	18-19	19-20	23-24	25-26	Change	% Change
TK-5	7,844	7,573	6,909	6,924	-920	-11.7%
6-8	3,667	3,641	3,286	3,026	-641	-17.5%
9-12	4,652	4,584	4,416	4,240	-412	-8.9%
TK-12	16,163	15,798	14,611	14,190	-1,973	-12.2%



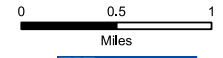


Pasadena

Unified School District
Elementary School
2015/16 Attendance Areas



- Altadena ES
- Cleveland ES
- Franklin ES
- Hamilton ES
- Jackson ES
- Jefferson ES
- McKinley School
- Madison ES
- Norma Coombs
- Roosevelt ES
- Sierra Madre ES
- Washington ES
- Webster ES
- Willard ES
- Preference Zones



November 2014

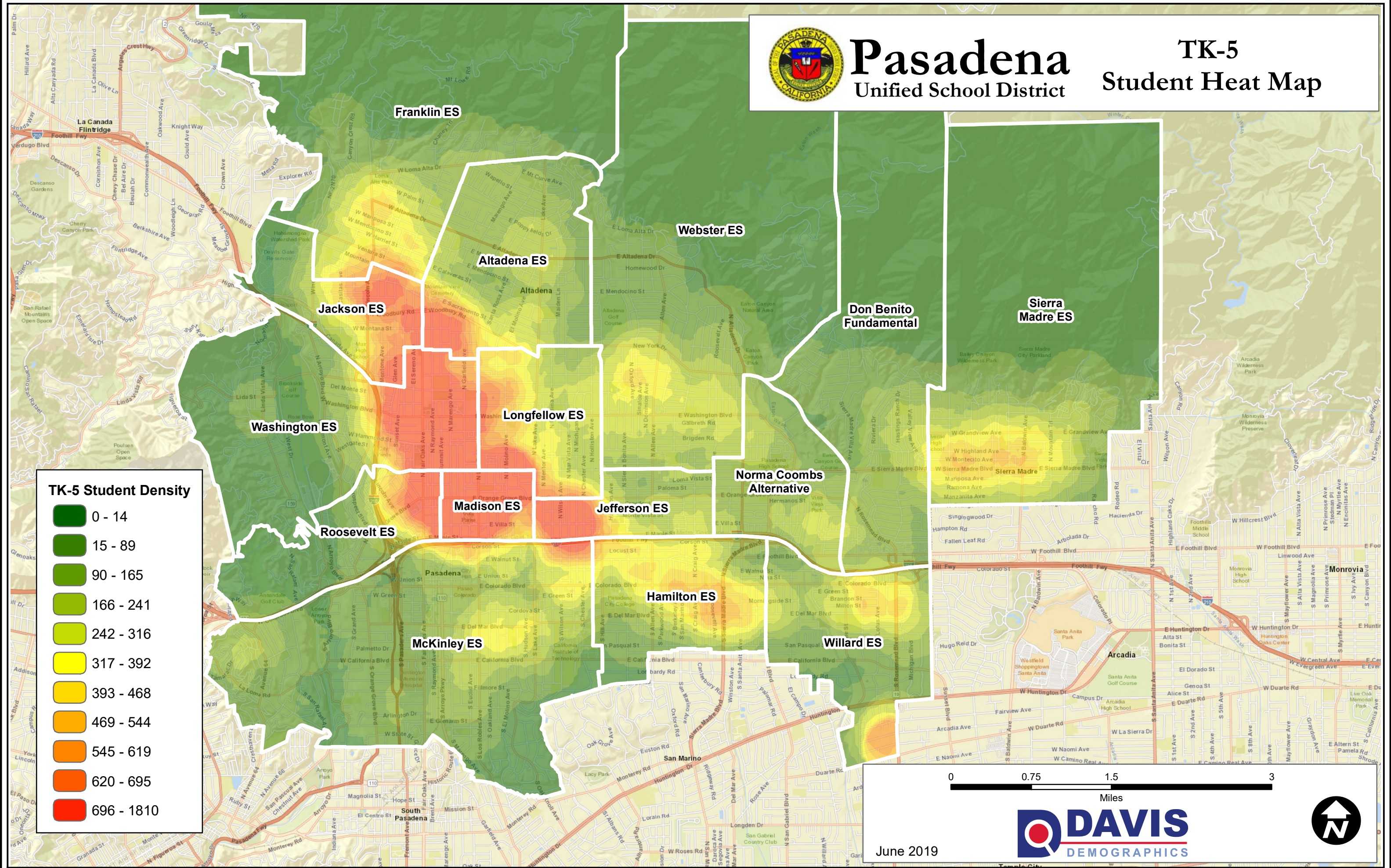


Sources:
P.U.S.D., DDP, ESKI

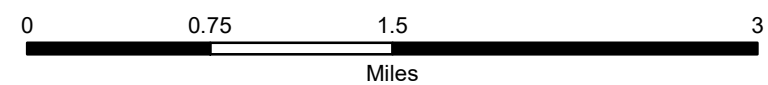
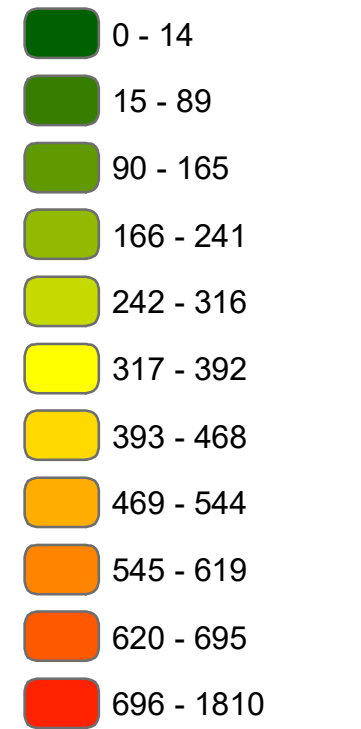


Pasadena Unified School District

TK-5 Student Heat Map



TK-5 Student Density



June 2019



PUSD School Capacity Summary
 Revised - 9/3/19

Elementary Capacity - TK-5

Using 85% Capacity:

	Perm CR	Port CR	CR In Use	Vacant/Other use	100% Capacity	Enroll 19-20	85% Capacity	Excess/ (Shortage)	% Capacity Usage	# of rms in 15% (non-CR)		Adjusted 85% Capacity	Adjusted % Capacity Usage	Current Pgm-Adjustment Reason
Altadena	23	0	12	11	575	259	489	230	53.0%	3	**	439	59.0%	2 PK
Don Benito	24	12	23	13	900	498	765	267	65.1%	5		739	67.4%	2 SDC
Field	24	5	23	6	725	483	616	133	78.4%	4		616	78.4%	No change
Franklin	20	2	11	11	550	165	468	303	35.3%	3	**	455	36.3%	1 SDC-Thp
Hamilton	23	3	25	1	650	560	553	(8)	101.4%	3	**	528	106.2%	1 PK
Jackson	25	7	27	5	800	655	680	25	96.3%	4		655	100.0%	1 PK
Jefferson	35	0	19	16	875	410	744	334	55.1%	5		719	57.0%	1 PK
Longfellow	36	0	17	19	900	395	765	370	51.6%	5		765	51.6%	No change
Madison	28	0	17	11	700	391	595	204	65.7%	4		595	65.7%	No change
McKinley TK-8	51	0	35	16	1364	554	1160	606	47.8%	8		1142	48.5%	1 SDC-Thp
Norma Coombs	22	3	17	8	625	359	531	172	67.6%	3	**	480	74.8%	1 PK, 2 SDC
Roosevelt	20	0	12	8	500	275	425	150	64.7%	3	**	323	85.1%	2 SDC PK, 4 SDC
San Rafael	18	5	18	5	575	407	489	82	83.3%	3	**	464	87.8%	1 PK
Sierra Madre	32	1	29	4	825	694	701	7	99.0%	4		663	104.6%	1 PK, 1 SDC
Wash Acc	41	1	19	23	1050	464	893	429	52.0%	6		868	53.5%	1 PK
Webster	28	3	18	13	775	324	659	335	49.2%	4		608	53.3%	1 PK, 2 SDC
Willard	33	2	28	7	875	592	744	152	79.6%	5		693	85.5%	1 PK, 2 SDC
Total	483	44	350	177	13,264	7,485	11,275	3,790	66.4%			10,750	69.6%	

Capacity taken from revised capacity sheets with vacant/other use added in (using loading factor of 25 for K-5, 30 for 6-12)

All vacant/other use rooms are included in capacity until staff/committee determines which are not available for classroom usage.

19-20 enrollment is preliminary - Day 6 Headcount

** Is three rooms for alternate purposes sufficient for a small school?

Note: if any information is missing or incorrect, please email masterplan19@pusd.us with the correction.

Pasadena Unified Elementary Schools - Programs and Enrollment														
as of August 2019														
School Name	PK	PK CC	TK	Special Ed Programs	Signature/Magnet/Special Programs	18-19 Enroll- Info Day	19-20 Enroll - Day 6	1 year change in enroll	5 year change in enroll	Of School Attendance:			18-19 neigh- borhood enroll	7 yr. Proj. neigh-bor hood growth
										18-19 % at home schl	18-19 % txfer in	18-19 % out of district		
Altadena	Y			SDC-PK, K-5 Inclusion	DLIP-French (SiS), Magnet Arts	225	259	34	(6)	67%	33%	4%	152	0.0%
Don Benito				SDC K-5 (2)		554	498	(56)	(135)	18%	82%	3%	101	5.2%
Field	Y				DLIP - Mandarin (WtW)	489	483	(6)	10	9%	91%	29%		N/A
Franklin			Y	ThP 3-5	Code to Future	182	165	(17)	(107)	61%	39%	2%	107	-28.9%
Hamilton	Y			SDC 1-5 (2)		605	560	(45)	(41)	53%	47%	1%	317	6.6%
Jackson	Y				DLIP - Spanish (SiS), STEM	634	655	21	236	41%	59%	8%	258	-27.0%
Jefferson	Y	Y	Y		DLIP - Spanish (SiS), Music	383	410	27	9	45%	55%	3%	170	-14.6%
Longfellow		Y	Y			437	395	(42)	(117)	43%	57%	2%	193	-16.5%
Madison	Y		Y	SDC-PK, K-5 Inclusion?	Music (?)	401	391	(10)	(68)	75%	25%	2%	305	-18.8%
McKinley			Y	ThP6-8	Arts Focus	577	554	(23)	(119)	44%	56%	4%	254	8.2%
Norma Coombs			Y	SDC PK-5 (3)	Code to Future	382	359	(23)	(81)	14%	86%	6%	53	-18.2%
Roosevelt	Y			SDC K-5 (?)		281	275	(6)	(31)	45%	55%	4%	124	-24.0%
San Rafael	Y				DLIP - Spanish (WtW)	440	407	(33)	(28)	17%	83%	12%		N/A
Sierra Madre	Y			SDC 3-5	Code to Future	689	694	5	(17)	66%	34%	2%	453	11.8%
Washington	Y	Y			STEM	494	464	(30)	(157)	66%	34%	2%	324	-24.4%
Webster	Y			SDC K-5 (?) Inclusion?		345	324	(21)	(150)	55%	45%	2%	189	-29.9%
Willard	Y	Y	Y	SDC 3-5 (1?)	Intl Bacc.	634	592	(42)	(57)	55%	45%	9%	347	-13.2%
Cleveland	Y			Odyssey South Charter School		97	0	(97)	(210)					
						7849	7485	(364)	(1069)					
Allendale	Temporary home of Adult Education													
Audubon	Odyssey Charter School													
Burbank	Stratford Private School													
Edison	Alma Fuerte Charter, Focus Point Academy, Renaissance Academy (Private)													
Linda Vista	Empty - Surplussed													
Loma Alta	Rosebud Charter, Montessori (Private?)													
Noyes	Aveson Charter													
	Field and San Rafael home school = preference zone only													
	SiS = School in School, WtW = Wall to Wall													
	Below 300 enrollment													
	Below or near 400 enrollment													
Note: if any information is missing or incorrect, please email masterplan19@pusd.us with the correction.														

Enrollment Projection by Grade Span for Master Planning

Resident Student Enrollment Projections

	Current	1 yr	5 yr	7 yr	Current to 7 year	
	18-19	19-20	23-24	25-26	Change	% Change
TK-5	7,180	6,916	6,270	6,284	-896	-12.5%
6-8	3,324	3,299	2,962	2,715	-609	-18.3%
9-12	4,039	3,978	3,828	3,671	-368	-9.1%
TK-12	14,543	14,193	13,060	12,670	-1,873	-12.9%

Residence Area and Changes sorted largest to smallest

Elementary Residence Area Change

	Current	25-26	Change	% Change
SMES	517	578	61	11.8%
McKinley	631	683	52	8.2%
Hamilton	473	504	31	6.6%
Don Benito	191	201	10	5.2%
Altadena	532	532	0	0.0%
Willard	463	402	-61	-13.2%
Jefferson	391	334	-57	-14.6%
Longfellow	491	410	-81	-16.5%
Norma C.	214	175	-39	-18.2%
Madison	743	603	-140	-18.8%
Roosevelt	296	225	-71	-24.0%
Wash ES	931	704	-227	-24.4%
Jackson	478	349	-129	-27.0%
Franklin	377	268	-109	-28.9%
Webster	452	317	-135	-29.9%

Middle School Residence Area Change

	Current	25-26	Change	% Change
Blair	233	277	44	18.9%
Wilson	548	581	33	6.0%
SMMS	265	270	5	1.9%
Eliot	1109	819	-290	-26.1%
Wash MS	1169	769	-400	-34.2%

High School Residence Area Change

	Current	25-26	Change	% Change
Blair	227	264	37	16.3%
PHS	1587	1539	-48	-3.0%
Muir	2225	1867	-358	-16.1%