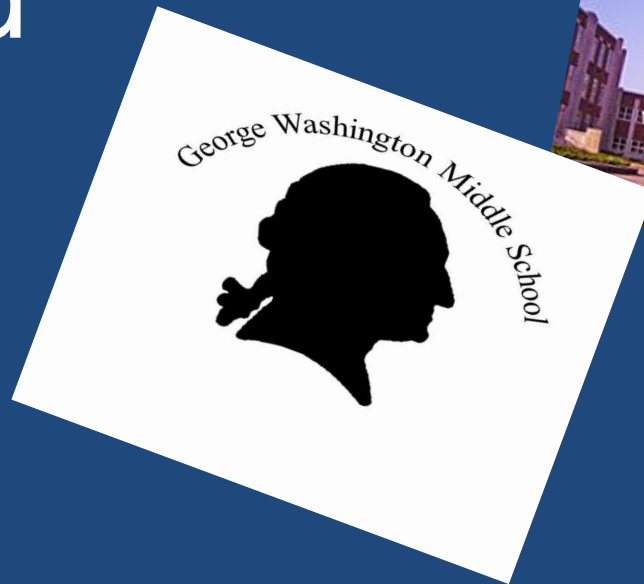


# Welcome Future George Washington Parents and Caregivers!



# 2024-2025 Administrative Team - Principals



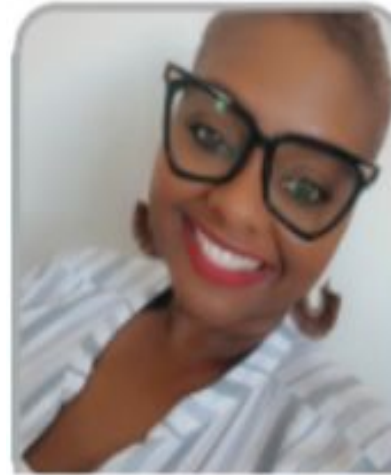
School  
Principal

Ms. Vinson



6<sup>th</sup> Grade  
Academic  
Principal

Ms. Ortiz



7<sup>th</sup> Grade  
Academic  
Principal

Ms. Muse



8<sup>th</sup> Grade  
Academic  
Principal

Ms. Gullette

# GWMS Deans & Director of Counseling



Dean of  
Students  
Mr. Perkins



Dean of  
Students  
Mr. Malone



Director of  
Counseling  
Mr. Forbes

# Audience Check-in



High Energy  
Unpleasant



High Energy  
Pleasant



Low Energy  
Unpleasant



Low Energy  
Pleasant

# School Facts and Structure

- 1,361 student attend G.W.
- Student Body Diversity
  - 40% Hispanic
  - 35% White
  - 19% African American
  - 6% other
- Complete State Accreditation in SOL tested areas
- Each grade level occupies its own space- 6th grade is on the 3rd floor
- Elective Wing (2nd floor) and Electives are 6th and 7th periods at the end of the school day.
- 6th graders eat lunch first and together
- Organized by 4 randomly assigned teams (6-1, 6-2, 6-3 and 6-4)
  - 1 Academic Principal per grade (travel)
  - 2 School Counselors (travel)

# Bell Schedule- A and B Day

Advisory 8:30-9:00 (30 min)		
<b>6th Grade</b>	<b>7th Grade</b> <b>Advisory 8:30-9:06</b> (30 min + 6 min movement)	<b>8th Grade</b>
1st/2nd Period 9:03 - 10:33 (90 min)	1st/2nd Period <b>9:09 - 10:39</b> (90 min)	1st Period elective 9:03 - 9:48 (45 min)
		2nd Period elective 9:51 - 10:36 (45 min)
<b>Anchor (5th) Period</b> 10:36 - 11:32 (50 min + 6 min movement)	3rd Period elective <b>10:42-11:27</b> (45 min)	3rd/4th Period 10:39-12:09 (90 min)
	4th Period elective <b>11:30-12:15</b> (45 min)	
Lunch: 11:35 - 12:05 (30 min)		
3rd/4th Period 12:09 - 1:39 (90 min)	Lunch: 12:18 - 12:48 (30 min)	<b>Anchor (5th) Period</b> 12:12-1:02 (50 min)
	<b>Anchor (5th) Period</b> 12:52-1:42 (50 min)	Lunch: 1:05-1:35 (30 min)
6th Period elective 1:42 - 2:27 (45 min)	6th/7th Period 1:45-3:15 (90 min)	6th/7th Period 1:39-3:15 (90 min + 6 min movement)
7th Period elective 2:30 - 3:15 (45 min)		

- GW is on a modified block schedule (A and B day) and Anchor period and Electives meets daily.
- A day- 1st, Anchor, Lunch, 3rd, and 6th and 7th periods
- B Day- 2nd, Anchor, Lunch, 4th, and 6th and 7th periods
- Rotates EVERYDAY

# Course Selection Process



- How do I select courses for my child?- 5th Grade School Counselor will hold a conference with your child.
- What does the timeline for course selection look like?- January 29 to March 14 is the window. Your current School Counselor will have specific dates.
- How are Electives chosen?
- Which Electives are High School Credit Courses?
- What if I don't get my first choice of Electives?

# How Credit-Bearing Languages Work

6<sup>th</sup> grade □ World Language IA → .5 credit

7<sup>th</sup> grade □ World Language IB → .5 credit

8<sup>th</sup> grade □ World Language II → 1 credit

3 years of credit-bearing  
language classes → **2 total  
credits**

# 2023-2024 –Dual Language Program Course Offerings

## 6<sup>th</sup> Grade

Spanish Language  
Arts 1

Spanish U.S.  
History 1

6<sup>th</sup> Grade English  
Language Arts

## 7<sup>th</sup> Grade

Spanish Language  
Arts 2

Spanish U.S.  
History 2

7<sup>th</sup> Grade English  
Language Arts

## 8<sup>th</sup> Grade

Spanish Language  
Arts 3

Spanish Civics  
and Economics

8<sup>th</sup> Grade English  
Language Arts

# Spanish Dual Language

- ▣ Students are required to be enrolled in Spanish Language Arts AND the Spanish Social Studies course for their grade level.
- ▣ Students will receive a 1.0 high school credit for successfully completing the Spanish Language Arts course (in total students can earn up to 3 high school credits in grades 6-8)
- ▣ There are no high school credits for the social studies courses.

# Advanced Academic Services (AAS) at GWMS

- Current rising 6<sup>th</sup> graders identified for AAS in Math will take Honors Math 7 with other 6<sup>th</sup> grade identified AAS Math students.
  - Prerequisite for Honors Math 7 is successful completion of Math 6.
- Rising 6<sup>th</sup> graders identified for AAS in Language Arts, Science, and/or History will enroll in Honors sections.
- The middle school advanced academic service (AAS) for Language Arts, Science, and/or History is a DEP (differentiated educational plan).
- Students identified for AAS will complete a DEP (differentiated educational plan) each quarter for each subject that they are identified in.
  - The DEP highlights how the teacher will differentiate for the student to meet their educational needs. DEPs are located on the teacher's Canvas page.

AAS Resource Teacher & Screening Lead- Ms. Stacy Palmer

[stacy.palmer@acps.k12.va.us](mailto:stacy.palmer@acps.k12.va.us)

# Honors Courses

- Honors courses provide a challenging curriculum to motivated students with strong interests in particular subject areas.
- Honors course are accelerated in both pace and content, is rigorous and relevant, assumes a mastery of the basic skills related to the subject area and has the expectation of high-quality student work.
- Students enrolled in one or more Honors courses should:
  - Be highly motivated, independent learners
  - Demonstrate intellectual curiosity and a willingness to accept higher levels of challenge
  - Have a strong interest in the subject area
  - Demonstrate the ability to link new knowledge to prior knowledge quickly
  - Use the time management and task commitment skills to perform consistently at an advanced level
- Entrance Expectations:
  - Students should have passed previous SOL tests in the required content area for which they are seeking Honors placement.
  - For rising sixth graders, a recommended 3 or 4 in the Honors content area is advisable.
  - Strong Writing skills and ability

# AVID and AVID Excel

## Advancement Via Individual Determination: AVID/AVID EXCEL

The mission of AVID is to ensure that ALL students, and most especially the least served students who are in the middle, will succeed in rigorous courses that will prepare them for a four year college

### Some Requirements to be Accepted Into AVID:

- An Average of “3” on the Standards Based Report Card
- Must be a motivated hard worker, have a positive attitude, and be collaborative in nature.
- Must be enrolled in an honors or a high school credit bearing course
- Typically underserved in a four year college, usually first in family to attend college

*\* AVID EXCEL is designed for long term language learners\**

# Special Education Services at GWMS

- Rising 6th grade families are introduced to their students Case Manager in August
- Rising 6th grade families invited to attend WEB Orientation in August
- Student schedules are developed according to what's specified in their IEP
- Some students may attend their Advisory period with their case manager (organization skills, etc)
- Some students may be assigned an intervention reading or math class as one of their electives depending on services written in their IEP

# Academic Advisement Tips

- Students will choose a total of 7 full year classes.
- Make sure to pick alternative electives.
- Must take German, Latin or Chinese in 6th grade if interested.
- Can't request certain teams or teachers.
- Schedules will be available in PowerSchool and mailed home mid-August.

Program of Studies can be found here:

HOME > ACADEMICS > PROGRAM OF STUDIES & GRADUATION PLANNING

## Program of Studies & Graduation Planning

### ACPS program of studies course catalog and other information

Planning your child's middle and high school program of studies is essential to ensure your child's success in meeting graduation requirements under Virginia's Standards of Learning, preparing for the future, and exploring his/her talents, abilities, and interests. Alexandria City Public Schools (ACPS) planning guides are designed to provide you and your child with information about academic requirements and options to assist in the planning process.

#### 2024-25 Program of Studies

Translations coming soon.

 [DOWNLOAD PROGRAM OF STUDIES](#)

TEACHING & LEARNING

EARLY CHILDHOOD (PRE-K)

FAMILY LIFE EDUCATION

HOME SCHOOLING

PROGRAM OF STUDIES & GRADUATION PLANNING

ADVANCEMENT VIA INDIVIDUAL DETERMINATION (AVID)

PROGRESS REPORTS

PROMOTION, RETENTION & REMEDIATION

STUDENT ASSIGNMENTS

# 5 Required Courses for 6th Graders

<b>Language Arts</b>	Language Arts 6 Honors Language Arts 6 *Language Arts- Dual Language
<b>Math</b>	Math 6 Honors Math 6 Math 7 (Advanced Math Concepts- AAS Math Students)
<b>Science</b>	General Science Honors General Science
<b>Social Studies</b>	US History I Honors US History I *U.S. History- Dual Language
<b>Health/PE</b>	Physical Development & Family Life

# Choose Equivalent to 2 Full Year Elective Courses

## **Full Year Courses**

- World Languages
  - Spanish
  - German
  - French
  - Chinese
  - Latin
- Literacy Enrichment
- Math Enrichment
- Band
- Orchestra
- Choir
- AVID and AVID Excel

## **Semester Courses**

- Visual Art
- Speech and Drama
- Family and Consumer Science
- Make it Your Business
- Intro to Technology

# Your GW Middle School Student Support Team (SST)



	<b>Mr. Greg Forbes</b> Director of School Counseling Email: gregory.forbes (703) 706-4500 Main Office: B100		<b>Mr. Robert Cook</b> Rising Higher School Counselor Email: robert.cook (703) 706-4500 Room/Office: A201
	<b>Mrs. Ansley Shackelford</b> 6 <sup>th</sup> Grade School Counselor Student Last Names A-L Email: ansley.shackelford (703) 706-4515		<b>Mr. Delano Green</b> 6 <sup>th</sup> Grade School Counselor Student Last Names M-Z Email: delano.green (703) 706-4515
	<b>Ms. LaShawn Ricks</b> 7 <sup>th</sup> Grade School Counselor Student Last Names A-L Email: lashawn.ricks (703) 706-4534		<b>Mrs. Verline Jackson</b> 7 <sup>th</sup> Grade School Counselor Student Last Names M-Z Email: verline.jackson (703) 706-4534
	<b>Ms. Amanda Najjar</b> 8 <sup>th</sup> Grade School Counselor Student Last Names A-L Email: amanda.najjar (703) 706-4518		<b>Ms. Stacey Thomas</b> 8 <sup>th</sup> Grade School Counselor Student Last Names M-Z Email: sthomas (703) 706-4518
	<b>Ms. Shawna Hampton</b> Social Worker Student Last Names A-L Email: shawna.hampton (703) 706-4562 Room/Office: A215		<b>Ms. Tania Ferran</b> Social Worker Student Last Names M-Z Email: tania.ferran (703) 706-4527 Room/Office: A215
	<b>Mr. Andrew Sabinash</b> School Psychologist Email: andrew.sabinash (703) 706-4500 Room/Office: A215		<b>Mrs. Shannon Mertsock</b> School Nurse Email: shannon.mertsock (703) 706-4516 FAX (703) 706-4554 Main Office: B100

# What Do Counselors Do?

- Focus on Academic, Social/Emotional Health, and Career/Post-Secondary Planning so that *every student achieves to his or her potential.*
- Help students evaluate their abilities, interests, talents, and personality characteristics in order to develop realistic academic, behavioral/social, and career goals.
- Provides classroom guidance lessons, small group, and individual counseling.



# Achieving Academic Success

- Academic Supports: All GW Counselors meet with students to:
  - Review student data: attendance, discipline, SOL testing history, MAP and other benchmark data, current academic performance, and GPA.
  - Develop an academic, behavioral/social goal for the school year.
  - Identify current interventions or supports needed to support goal attainment and student success.
- Counselors also...
  - Monitor student progress and meet as necessary.
  - Meet with all students for Academic Advisement from January-April.
  - Attend team meetings to discuss student academic concerns
  - Connect students to after school academic support

# Social & Emotional Health

- Counselors...

- Help students develop strong decision-making abilities and self confidence in order to encourage students to make positive decisions.
- Work with students who are dealing with tragedy or exceptional stress to develop coping strategies.
- Work with students to resolve conflicts and create positive peer relationships.
- Help students with behavioral issues find success in the classroom by working on strategies with the students, teachers and parents.
- Help students develop positive character traits.

# Counseling Groups

- Organizational/Study Skills
- Social Skills
- Decision Making
- Communication Skills
- Self-Esteem,
- Problem Solving/Conflict Resolution
- Emotional Regulation
- Anger Management
- Leadership Development



## Individual Counseling:

- Social/Emotional Health
- Grief & Loss
- Divorce
- LGBTQ+
- Peer Mediation,
- Executive Functioning
- Coping Skills
- Healthy Relationships.

# SST Role in Advisory

Mindfulness Monday	<a href="#">Mindfulness Matters</a>
	<a href="#">Clearing Cache and Cookies - English</a>
Technology Tuesday	<a href="#">Clearing Cache and Cookies - Spanish</a>
Wellness Wednesday	<a href="#">Bullying Prevention</a> <a href="#">Mood Meter</a>
AVID & College/Career Thursday	<a href="#">Qtr. 1 Interim Reflection &amp; Goal Setting</a>
Prexie Pride Friday (PBIS) with Community Circle	<a href="#">1) Secure the Building</a> <a href="#">Deans Lesson + Harvest Festival</a>
Mindfulness Monday	<b>NO SCHOOL</b>
	<a href="#">My Digital Values- Lesson Plan</a> <a href="#">Link to Form</a> <a href="#">Student Slides- English</a> <a href="#">Student Slides- Spanish</a>
Technology Tuesday	
Wellness Wednesday	<a href="#">Self-Care</a>
AVID & College/Career Thursday	<a href="#">AVID WICOR - Organization</a>
	7th Grade Teachers: Please sign on to this zoom for your class to see at 8:40
Prexie Pride Friday (PBIS) with Community Circle	<a href="#">Deans (Malone and Perkins) Lesson Here</a>
Mindfulness Monday	<a href="#">UPSTANDER or BYSTANDER</a> <a href="#">Mood Meter</a>
Technology Tuesday	<a href="#">Teen Voices- Pressure to Stay Connected- English</a> <a href="#">Teen Voices- Pressure to Stay Connected- Spanish</a>
Wellness Wednesday	<a href="#">Is it CYBERBULLYING?</a> <a href="#">Mood Meter</a>
AVID & College/Career Thursday	<a href="#">Preparing for the end of 1st quarter</a>
Prexie Pride Friday (PBIS) with Community Circle	<a href="#">Self-Awareness Student Survey- REQUIRED</a>
Mindfulness Monday	<a href="#">FRIENDSHIP BULLYING</a> <a href="#">Mood Meter</a>
	<a href="#">7th Grade Only: Please play this message from Ms. Gullette before the rest of the SEAL lesson</a> <a href="#">Positive Tech Habits- English</a> <a href="#">Positive Tech Habits- Spanish</a>
Technology Tuesday	

Mindfulness Monday	<b>NO SCHOOL</b>
	Please share this presentation first about accessing Zoom- <a href="#">English</a> <a href="#">Spanish</a>
Technology Tuesday	<a href="#">Online Tutoring - English - Spanish</a>
Wellness Wednesday	<a href="#">6th Grade Naviance Career Interest Profiler</a> <a href="#">7th Grade Naviance Career Cluster Finder</a> <a href="#">8th grade Naviance Strengths Exploration</a>
AVID & College/Career Thursday	<a href="#">Preparing for the end of second quarter</a>
Prexie Pride Friday (PBIS) with Community Circle	
Mindfulness Monday	<a href="#">Setting Goals for 2024</a> <a href="#">Mood Meter</a>
	"Please share this presentation first about accessing Zoom- <a href="#">English</a> <a href="#">Spanish</a>
Technology Tuesday	<a href="#">Searching in Canvas - English - Spanish</a>
Wellness Wednesday	<a href="#">Got Body Odor?</a> <a href="#">Mood Meter</a> <a href="#">WIDA Assembly List</a> (see email from Ms. Gullette)
AVID & College/Career Thursday	<a href="#">Bellwork &amp; Growth Mindset</a>
Prexie Pride Friday (PBIS) with Community Circle	<a href="#">Mid Year Reset Lesson</a>
Mindfulness Monday	<b>NO SCHOOL</b>
Technology Tuesday	<a href="#">Creating a Drawing App with Scratch</a>
Wellness Wednesday	<a href="#">H.A.L.T.</a> <a href="#">Mood Meter</a>
AVID & College/Career Thursday	<a href="#">Preparing for the end of second quarter</a>
	View your S2 Course <a href="#">English</a> <a href="#">Spanish</a>



# Academic Supports

- Access to your counselors
  - Academic and Organizational goals
  - Self Advocacy
- ASPIRE Academy
- LINK Club
  - academic tutoring and engaging project-based learning activities
- After school office hours
  - With **ANY** teacher
- ACPS 24 hour tutoring - Access through Canvas
- Intervention Course
  - Reading and Math
- Stay connected with CANVAS, PowerSchool and CLEVER, Securly, ParentSquare, Informational Parent Facebook Group (all for parents/caregivers)



# Parent Quick Links

## 2023-2024 GWMS PARENT QUICK LINKS

Technology	
Parent Square Parent Power School Account Support Family Technology Guide	<a href="#">Parent Square</a> <a href="#">Parent Power School Account Support</a> <a href="#">Family Technology Guide</a>
Open House 2023-2024	
Open House Presentation	<a href="#">6th Grade Open House PowerPoint</a> <a href="#">Kick-Off to an Excellent Year</a> (IEP/504 Event)
Staff Directory 2023-2024	
Staff Contact Information Student Support Team Directory ( <b>use to contact Counselors, Social Workers and the Nurse</b> ) Grade Level Office Contact Information ( <b>use for early release, reporting absences and more</b> )	<a href="#">Staff Contact Information-all staff members</a> <a href="#">Student Support Team Directory</a> <a href="#">GWMS Grade Level Office Contact List</a>
Student Conduct	
ACPS Student Code of Conduct Cell Phone Policy Dismissal Procedure GWMS is a Closed Campus	<a href="#">ACPS Student Code of Conduct</a> <a href="#">Cell Phone Policy</a> <a href="#">Dismissal Procedure</a> <a href="#">GWMS is a Closed Campus</a>
GW Bell Schedule/Calendars	

Daily Bell Schedule GWMS Bell Schedule GWMS A-day/B-Day Calendar GWMS Advisory Lesson Calendar	<a href="#">Student Template Block Schedule</a> <a href="#">GWMS Bell Schedule</a> <a href="#">GWMS A-day/B-Day Calendar</a> <a href="#">GWMS Advisory Lesson Calendar</a>
ACPS Academic Calendar	<a href="#">ACPS Academic Calendar SY 2023-2024</a>
Back to School Forms	<a href="#">Back to School Forms</a>

Academic Support Resources	
Teacher Academic Support Hours (before, during and afterschool)	<a href="#">Academic Support Offerings</a>
24/7 Online Tutoring	Free 24/7 Online Tutoring for students in grades 6-12 is available <a href="#">Linked here is more information</a> related to how students access free online tutoring and which subjects are available.
Middle School Orientation & Transition Events	
Middle School Orientation & Transition Events	<a href="#">Orientation &amp; Transition Events 2024</a>
Monthly Parent Newsletters	
Prexie News	<a href="#">January Prexie News</a> <a href="#">November Prexie News</a> <a href="#">October Prexie News</a> <a href="#">September Prexie News</a>

Parent Teacher Association	
Parent Teacher Association	<a href="#">Join the PTA</a> , read the <a href="#">GWMS PTA Newsletter</a> , and <a href="#">purchase GWMS Spirit Wear</a> sponsored by the PTA

# What are your extra-curricular, intramural, and high school sports offerings?

## Sports – Intramural/High School

### • Fall Season:

Rugby, Softball and Soccer

### Winter Season:

Basketball and Floor Hockey

### Spring Season:

Flag Football, Volleyball, and Track & Field



# Get involved in YOUR School!

## Example Clubs and Activities

- Fall and Spring Plays
- Drama Club
- Debate Team
- Harry Potter Club
- Yoga Club
- Prexie Aviators
- Legend of Zelda
- Grammar & Writing Club
- Sewing Club
- Homework Help
- Dungeons and Dragons

## Late bus Monday-Thursday at 4:15 p.m.

- After School Soccer
- Line Dancing Club
- Latin Club
- STEM Club
- Robotics Team
- Book Club
- Arts & Crafts Club
- Underwater Robotics
- Screen FREE Board Games
- History Club

# Opportunities for Student Voice and Student Choice

- Students need to shape their educational experience
- Dean's Leadership Council (Student Government)
- WEB Leader
- Student Ambassadors
- Service Learning

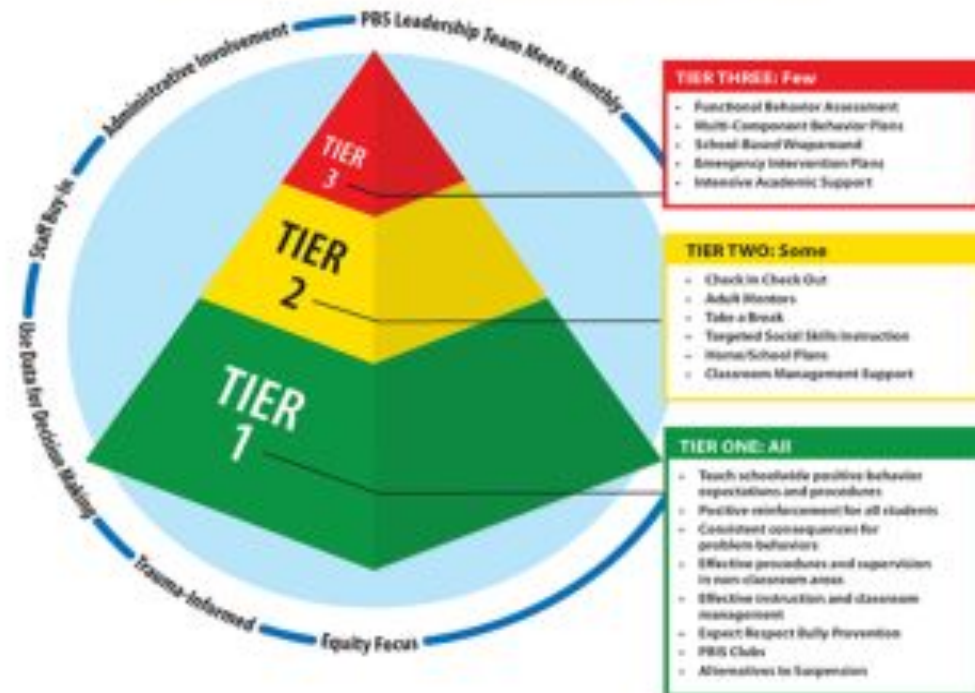
# Positive Behavior Interventions and Supports (PBIS)

## PBIS includes School Wide Procedures and Processes Used for:

- All students, All staff and in All settings
- Non-classroom settings within the school environment (e.g., hallways, cafeteria, bathrooms)
- Individual classrooms and teachers
- Small group interventions for the approximated 5-15% of students that require a more specialized approach to social skills and behavior instruction
- Individual student supports for the estimated 1-5% of students who present the most challenging behaviors




### Three-Tiered Model of Positive Behavioral Interventions and Support



# Prexie Pride



## George Washington Middle School Prexie PRIDE

EXPECTATION		SETTING						
	Classroom	Hallways/ Stairs	Bathroom	Cafeteria	Auditorium	Gym/ Field	Library	
	<b>Preparation</b>	<ul style="list-style-type: none"><li>- Arrive on time</li><li>- Have all materials ready</li><li>- Follow directions</li><li>- Be ready to learn w/ an open mind</li><li>- Keep all electronic devices silent and out of sight</li></ul>	<ul style="list-style-type: none"><li>- Move efficiently to destination</li><li>- Walk with purpose</li><li>- Stay to the right</li><li>- Keep all electronic devices silent and out of sight</li></ul>	<ul style="list-style-type: none"><li>- Have a pass</li><li>- Get in and get out quickly</li><li>- Keep all electronic devices silent and out of sight</li></ul>	<ul style="list-style-type: none"><li>- Walk at all times</li><li>- Sit at table and wait to be called</li><li>- Keep all electronic devices silent and out of sight</li></ul>	<ul style="list-style-type: none"><li>- Keep food and drink out of auditorium</li><li>- Enter and exit in proper manner</li><li>- Keep all electronic devices silent and out of sight</li></ul>	<ul style="list-style-type: none"><li>- Arrive on time</li><li>- Bring and wear uniform</li><li>- Keep all electronic devices silent and out of sight</li></ul>	<ul style="list-style-type: none"><li>- Enter quietly</li><li>- Have a pass or signed agenda</li><li>- Bring materials needed</li><li>- Come w/ staff permission only</li><li>- Keep all electronic devices silent and out of sight</li></ul>
	<b>Respect</b>	<ul style="list-style-type: none"><li>- Use inside voice</li><li>- Listen to others</li><li>- Use polite language (please, thank you, etc.)</li><li>- Be kind</li><li>- Keep food and drinks out of classroom</li></ul>	<ul style="list-style-type: none"><li>- Use inside voice</li><li>- Use kind words</li><li>- Keep hands and feet to self</li></ul>	<ul style="list-style-type: none"><li>- Clean up behind yourself</li><li>- Dispose of personal items appropriately</li><li>- Take pride in clean walls and dry stalls</li></ul>	<ul style="list-style-type: none"><li>- Follow adult directions</li><li>- Show kindness to others (including all adults and peers)</li><li>- Honor personal boundaries</li></ul>	<ul style="list-style-type: none"><li>- Follow adult directions</li><li>- Honor personal boundaries</li><li>- Keep remarks and gestures positive and appropriate</li></ul>	<ul style="list-style-type: none"><li>- Follow adult directions</li><li>- Honor personal boundaries</li><li>- Cooperate with others</li></ul>	<ul style="list-style-type: none"><li>- Treat books and materials with care</li><li>- Keep food and drinks out of library</li><li>- Maintain a quiet atmosphere</li></ul>
	<b>Integrity</b>	<ul style="list-style-type: none"><li>- Complete all assignments with honesty</li><li>- Make good choices</li></ul>	<ul style="list-style-type: none"><li>- Go directly to your assigned location</li><li>- Respond appropriately to adult requests</li></ul>	<ul style="list-style-type: none"><li>- Avoid horseplay and socialization</li><li>- Keep clean walls and dry stalls</li><li>- Use nearest bathroom</li></ul>	<ul style="list-style-type: none"><li>- Use good manners</li><li>- Touch your food/ tray only</li><li>- Sit in your seat only</li></ul>	<ul style="list-style-type: none"><li>- Be an active listener (eyes and ears open, mouths closed)</li></ul>	<ul style="list-style-type: none"><li>- Use equipment safely and appropriately</li></ul>	<ul style="list-style-type: none"><li>- Remain on task</li><li>- Practice academic honesty</li><li>- Cite and use all resources appropriately</li></ul>
	<b>Dedication</b>	<ul style="list-style-type: none"><li>- Be an active participant</li><li>- Be cooperative</li><li>- Challenge yourself</li></ul>	<ul style="list-style-type: none"><li>- Keep hallways, floors and walls clean</li><li>- Admire displays with eyes only</li></ul>	<ul style="list-style-type: none"><li>- Take care of business and return to class promptly</li><li>- Report any problems quickly</li></ul>	<ul style="list-style-type: none"><li>- Clean up after yourself</li><li>- Keep food on your tray</li></ul>	<ul style="list-style-type: none"><li>- Show appreciation by clapping appropriately</li></ul>	<ul style="list-style-type: none"><li>- Display good sportsmanship</li><li>- Participate to the best of your ability</li><li>- Try to learn new activities</li><li>- Return equipment</li></ul>	<ul style="list-style-type: none"><li>- Ask for assistance</li><li>- Challenge yourself</li><li>- Read new books</li></ul>
<b>Excellence</b>	<ul style="list-style-type: none"><li>- Support and encourage others</li><li>- Follow school dress code</li><li>- Always do your best and never give up</li><li>- Use class time efficiently</li></ul>	<ul style="list-style-type: none"><li>- Use the quickest route to destination</li></ul>	<ul style="list-style-type: none"><li>- Wash hands thoroughly</li><li>- Use hall pass at all times</li></ul>	<ul style="list-style-type: none"><li>- Invite others to your table</li><li>- Exit at appropriate door</li><li>- Recycle when possible</li></ul>	<ul style="list-style-type: none"><li>- Be seated in appropriate manner</li></ul>	<ul style="list-style-type: none"><li>- Include others</li><li>- Encourage peers</li><li>- Be fair</li><li>- Work as a team</li></ul>	<ul style="list-style-type: none"><li>- Return books in timely manner</li><li>- Return materials and furniture to proper place</li></ul>	

# Recognizing Positive Behavior

- Students Receive Prexie Pride Bucks for Displaying Positive Behavior
- Weekly PBIS Raffles
- Monthly Prexie Pride Store
- Quarterly School Wide PBIS Events

The image shows a blue rectangular form titled "PREXIES...GROW" at the top. The form is divided into several sections. On the left, there is a list of five items: 1. Preparation, 2. Respect, 3. Integrity, 4. Dedication, and 5. Excellence. In the center, there is a circular logo with a silhouette of a person's head and the text "Using Technology to Make a Difference". Below the logo, the name "Jesse Mazur" is handwritten in cursive. To the right of the logo, there is a section for "Student Name" with a line for a signature. Below that, there is a section for "Staff Name" with a line for a signature. At the bottom, there is a section for "Date" with a line for a date. The form is placed on a wooden surface.

# General Supply List

- Backpack
- Notebooks for each class (or AM or PM)
- Pens, Pencil, Erasers and Highlighters
- Pencil sharpener, Ruler, Glue Stick, Post-it Notes
- Earbuds for instructional purposes
- 3-4 Composition Notebooks
- 1 1/2" Binder for AVID (if applicable)
- 1 package of dividers
- Loose-lead paper
- Chromebook (provided by ACPS)

# Other Helpful Tips

- Practice with a lock over summer for hallway assigned locker. Locker is assigned near advisory teacher.
- Gym fee is \$20.00 (lock rental fee and purchase of gym uniform).
- Lunch pin is the same all throughout ACPS. Lunch is currently \$2.35 a day.
- Student arrive at Door 8 before 8:25 a.m. Students who arrive after 8:25 a.m. enter through Door 1.
- Students report to the cafeteria (where breakfast is served).
- Students have abatement screening (BLUE- Binder, Laptop, Umbrella, and Eyeglass case)

# Upcoming Academic Advisement Dates

- ❖ **Open Houses-** February 2, February 23 and March 8 at 9:00 a.m.- Only need to attend one Open House.
- ❖ **Electives Fair and Curriculum Night-** Monday, February 5, 2024 at 5:30 p.m.- Learn about all of our various elective offerings and core course offerings and settings (Honors vs. General Education).
- ❖ **GW Open House for Rising 6th grade Spanish speaking families-** February 21, 2024 at 5:30.
- ❖ **A GW Glimpse!** Students from the following schools will attend a virtual program at 9:00 a.m. to discuss middle school life! A student panel will also take place.
  - February 6th- MacArthur and Barrett
  - February 7th- George Mason, Lyles Crouch, Cora Kelly, and Naomi Brooks
  - February 9th- Mount Vernon and Jefferson Houston

# Start of the Year Programs- Dates TBD



## WEB



### 6th Grade

and New to Alexandria City Public Schools 7th and 8th Grade Students

## Orientation Party

(also known as Middle School Orientation)

### What is WEB?

WEB, *Where Everybody Belongs*, is a program that welcomes the sixth grade class to our middle schools. Every sixth grader will be assigned an eighth grade WEB Leader who will continue to support him or her throughout the first year of middle school. The WEB Leaders have been identified as students on campus who are positive role models, responsible, possess leadership qualities, are kind, and, most importantly, have the desire to give back to their school community.

### Welcome GWMS Students and Families

## Kick-Off to an Excellent Year



# Thank you attending!

## Questions???

