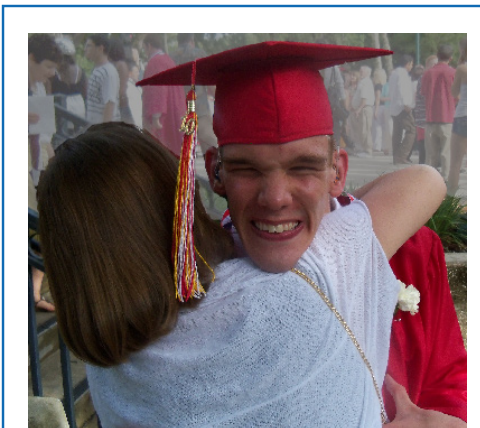


Topics Addressed

- Educational Policy, Procedures, & Initiatives
- Florida's Communication Plan
- Specially Designed Instruction
- Instructional/Teaching Strategies
- Assistive and Instructional Technologies
- Accessible Instructional / Educational Materials (AIM / AEM)
- Family Involvement
- Florida State Performance Plan (SPP) Indicators
 - SPP 1 - Graduation Rate
 - SPP 3 - Performance on Statewide Assessments
 - SPP 5 - Least Restrictive Environment (ages 6-21)
 - SPP 6 - Least Restrictive Environment (ages 3-5)
 - SPP 7 - Pre-school Outcomes
 - SPP 8 - Parent Involvement
 - SPP 12 - Part C to Part B Transition
 - SPP 14 - Postsecondary Outcomes



Contact Us

RMTC-DHH



info@rmtcdhh.org



facebook.com/rmtcdhh



twitter.com/rmtcdhh

Visit our website to view upcoming events at:

www.rmtcdhh.org

or to access the Center's free loan media library go to:

<http://dhh.materials.florida-ese.org/>

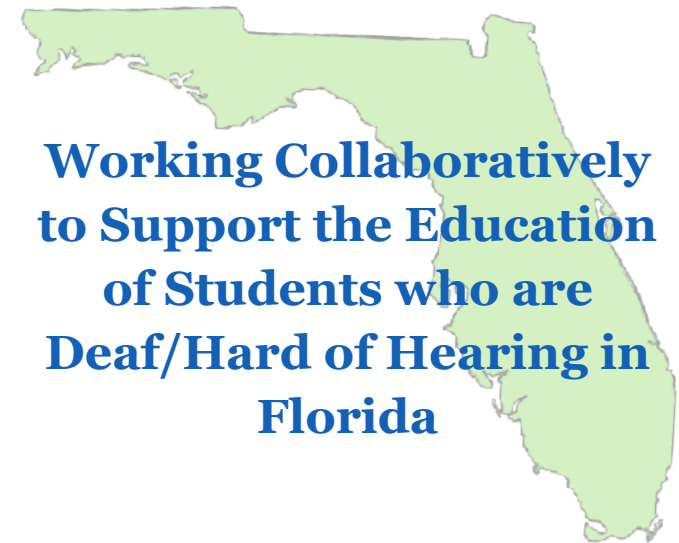
This document was developed by the Resource Materials and Technology Center for the Deaf/Hard of Hearing, a special project funded by the State of Florida, Department of Education (FDOE), division of Public Schools and Community Education, Bureau of Exceptional Education and Student Services (BEESS) through federal assistance under the Individuals with Disabilities Education Act (IDEA), Part B and IDEA Part B Trust funds and through an agreement with the Florida School for the Deaf and the Blind.

Revised 03/2024

RMTC-DHH



Resource Materials and Technology Center
for the Deaf/Hard of Hearing



**Working Collaboratively
to Support the Education
of Students who are
Deaf/Hard of Hearing in
Florida**

rmtcdhh.org

**207 N. San Marco Avenue
St. Augustine, FL 32084**
Located on the Campus of FSDB

About Us

Established in 1978 by the Florida Legislature, the Resource Materials and Technology Center for the Deaf/Hard of Hearing (RMTC-DHH) is a statewide discretionary project of the Florida Department of Education, Bureau of Exceptional Education and Student Services (BEESS). RMTC-DHH functions as a statewide specialized center within the Florida Diagnostic & Learning Resource System (FDLRS) network.

RMTC-DHH staff members provide training, technical assistance, and resources to school districts, agencies, associations, families, and other state and federal discretionary projects working with students who are deaf or hard of hearing in Florida.

Services from RMTC-DHH are provided by request and at no charge to the school, district, or organization.

RMTC-DHH works collaboratively with all Florida stakeholders to positively influence outcomes of students who are deaf or hard of hearing in preparation for college, career, and life.

RMTC-DHH Trainings

Training & Professional Learning

- Working With the Experts: Deaf/Hard of Hearing (WWE: DHH)
- Language Reading Connection: Deaf/Hard of Hearing (LRC: DHH)
- Functional Listening Evaluation: Why and How
- How to Screen for Usher Syndrome
- DeafEd Express
- Professional Learning Communities
- Regional, District, & In-Classroom Training
- Webinars
- Online Training Modules

Materials

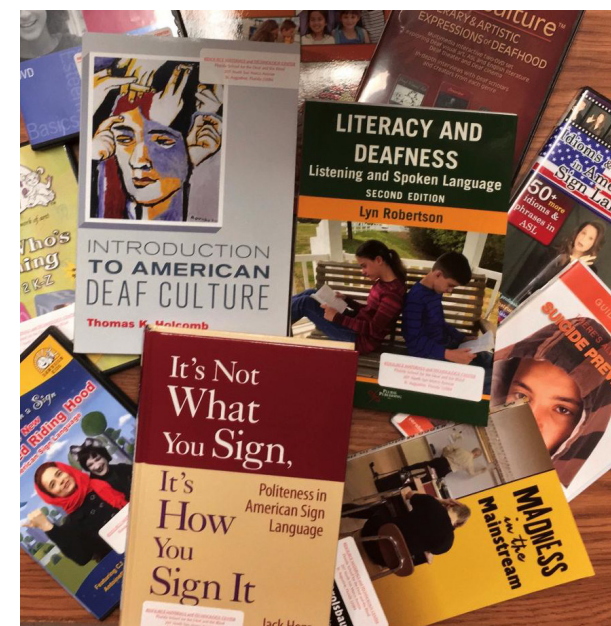
- Tech Notes & E-newsletters
- RMTC-DHH Website
- Upcoming Events Calendar



RMTC-DHH Services

Services

- Instructional Materials
- Technical Assistance
- Professional Learning
- Media and Materials Loan Library
- Information and Resources



To borrow materials go to:

dhh.materials.florida-ese.org