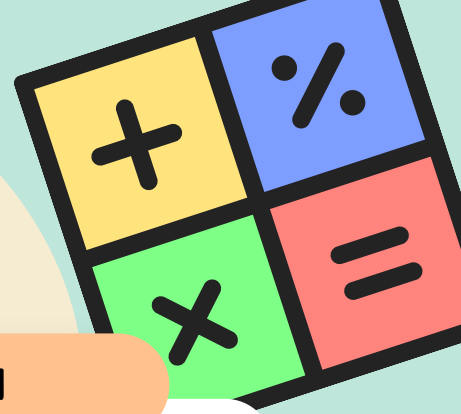
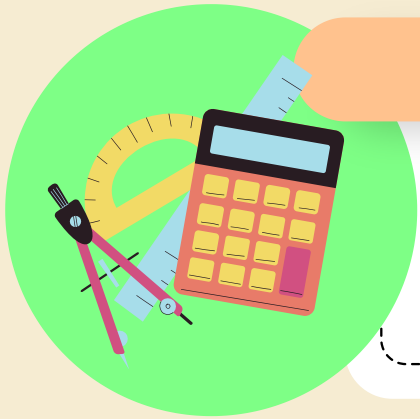


International Baccalaureate Mathematics Grades 11 and 12



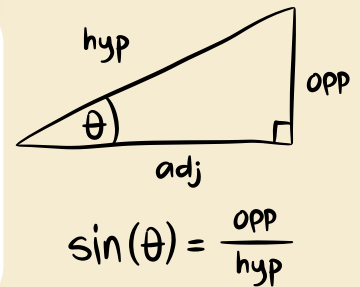
11th Grade IBDP Analysis HL 1



Students who complete IM3 as a 10th grader with Cs or better can enroll in the 2 year IB math pathway. This course builds on the algebra and trigonometry concepts that are covered in IM3.

12th Grade IBDP Analysis HL 2

Upon successful completion of Analysis HL 1 students can continue into college level calculus, advanced statistics, and high level math theory. This pathway is ideal for students interested in STEM after high school. High performance on IB exams can earn college credits.



12th Grade IBDP Applications HL 2



12th Graders who have completed Analysis HL year 1 can choose HL 2 Applications which focuses more on math applications, using technology to solve problems, and statistics.

12th Grade IBDP Applications SL 1 year Course

Students who complete IM3 in the 11th grade can complete this one year IB math course which will emphasize statistics but also introduce calculus and college math concepts.

