



South Whidbey School District

Design Steering Committee

Meeting #5



02.21.2024

INTEGRUS

A COLLABORATION OF YGH & INTEGRUS ARCHITECTURE

AGENDA

Sustainability

Elementary School

Playground

Administration

Middle & High School

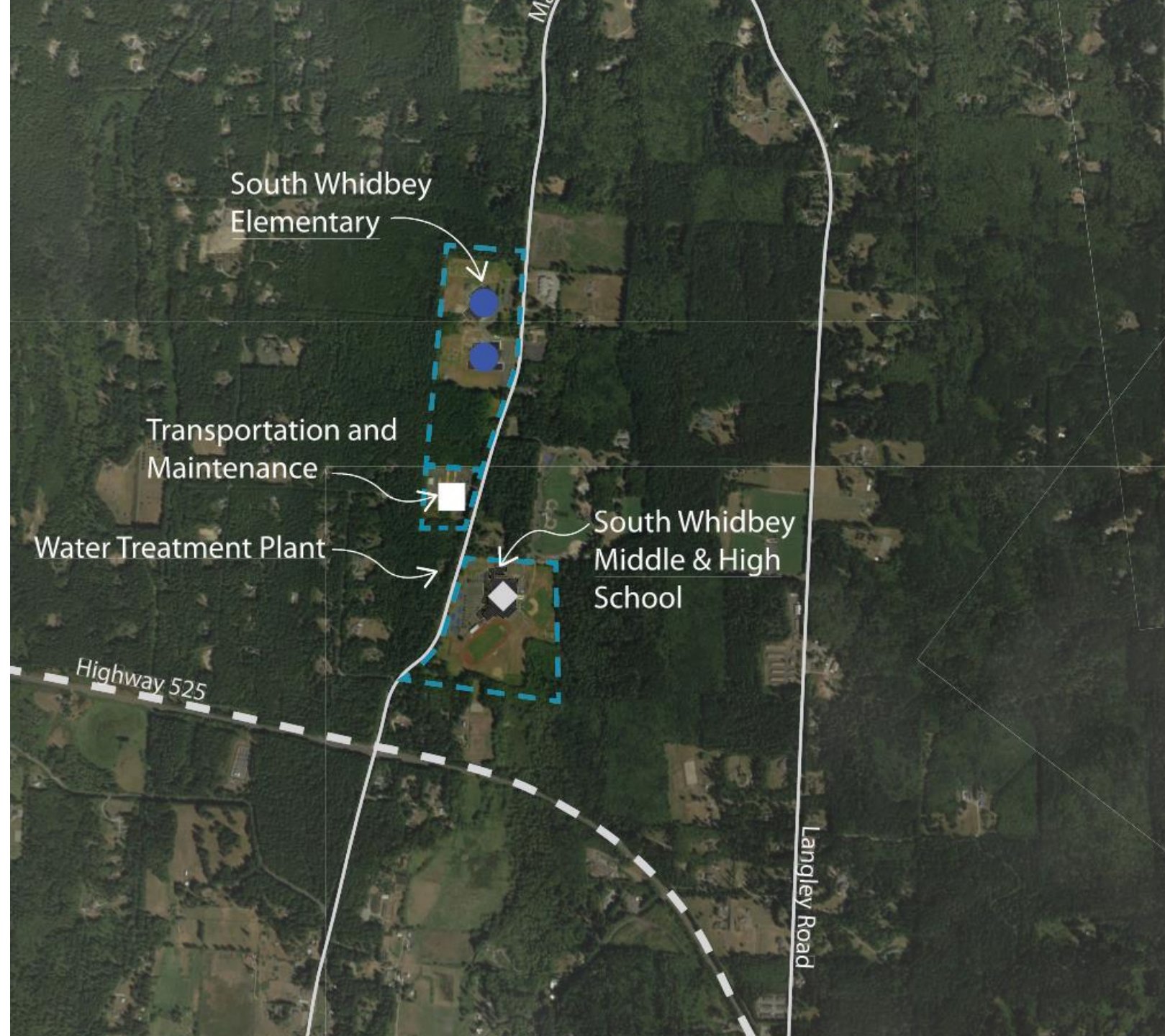
Administration +

Entries

Middle School Stair

Stadium and Fields

Next Steps



Sustainability

Approach



SUSTAINABILITY ACTION PLAN



- Decarbonization
- Health and Wellbeing
- Place

Sustainability Action Plan - Our Goals

- Decarbonization
 - Reduction in projects
 - Reporting performance



Embodied Carbon

+



Operational Carbon

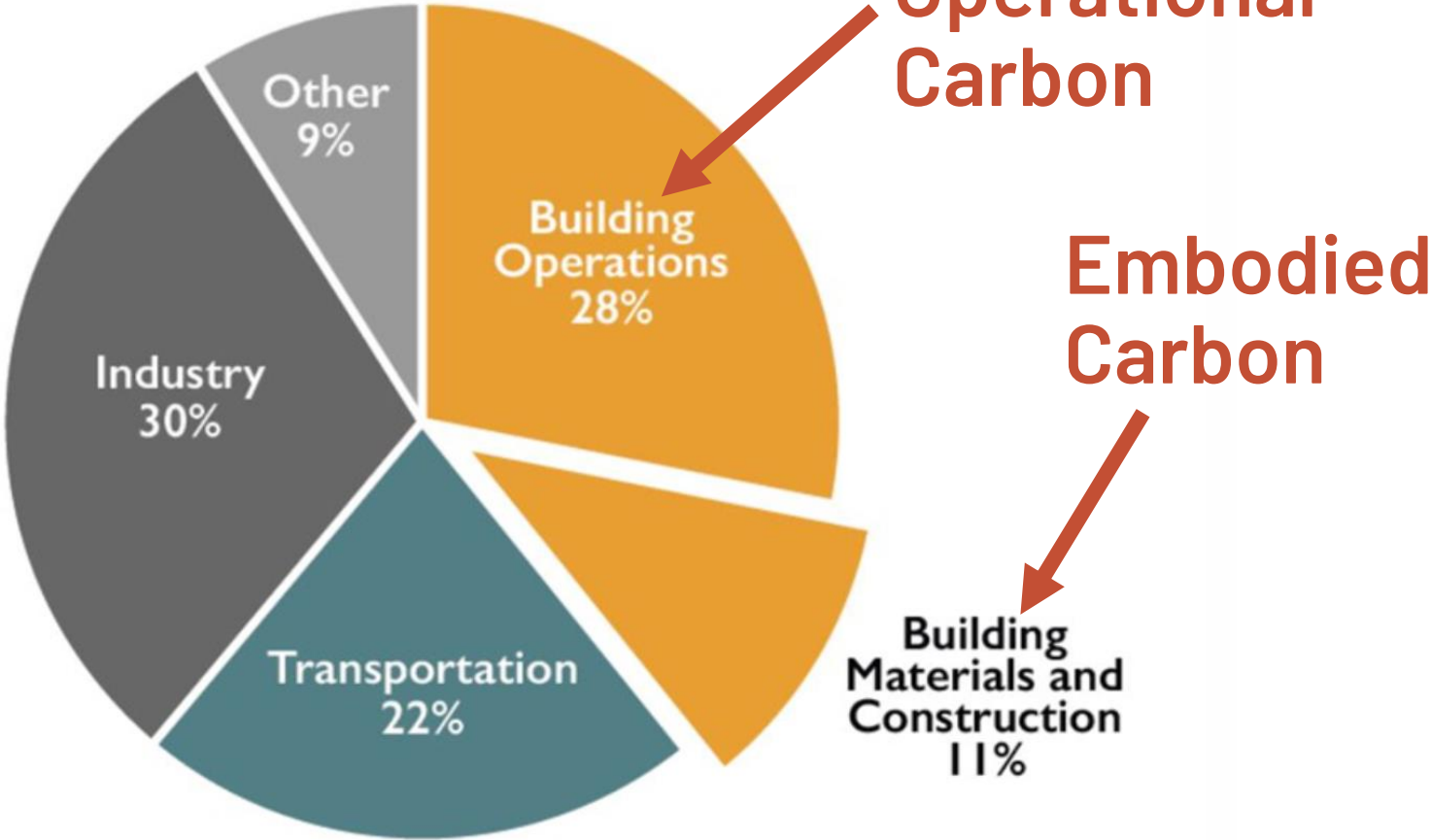
=



Total Carbon

Carbon & the Built Environment

Global CO₂ Emissions by Sector



Sustainability Action Plan – Our Goals

• Health and Wellbeing: Healthy Materials Framework

DIVISION 9

09 65 00 RESILIENT FLOORING

GOOD: Select products that have one or more of the following;

- Formaldehyde Free
- Low VOC
- Declare Label
- EPD
- HPD
- Antimicrobial Free

BETTER: Select products that meet one or more of the following;

- LBC Red List Approved
- USA made/sources

BEST: Select products that meet one or more of the following;

- Take back program available
- LBC Red List Free
- Carbon Neutral Product
- Product sourced (extracted, manufactured and purchased) within 100 mile of the project site. (LEED)



support **human health** by preferring products that support and foster life throughout their life cycles and seek to eliminate the use of hazardous substances



support **social health** & equity by preferring products from manufacturers that secure human rights in their own operations and in their supply chains, positively impacting their workers and the communities where they operate



support **ecosystem health** by preferring products that support and regenerate the natural air, water, and biological cycles of life through thoughtful supply chain management and restorative company practices



support **climate health** by preferring products that reduce carbon emissions and ultimately sequester more carbon than emitted.



support a **circular economy** by reusing and improving buildings and by designing for resiliency, adaptability, disassembly, and reuse, aspiring to a zero-waste goal for global construction activities.

Sustainability Action Plan - Our Goals

- **Place**
 - **Community**
 - Fostering Community Connections
 - Inclusive Spaces
 - Connecting people to their environment
 - **Life**
 - Restore predevelopment conditions
 - Support regional habitats
 - **Water**
 - Prioritize natural stormwater management
 - Incorporate water saving measures



Design Process

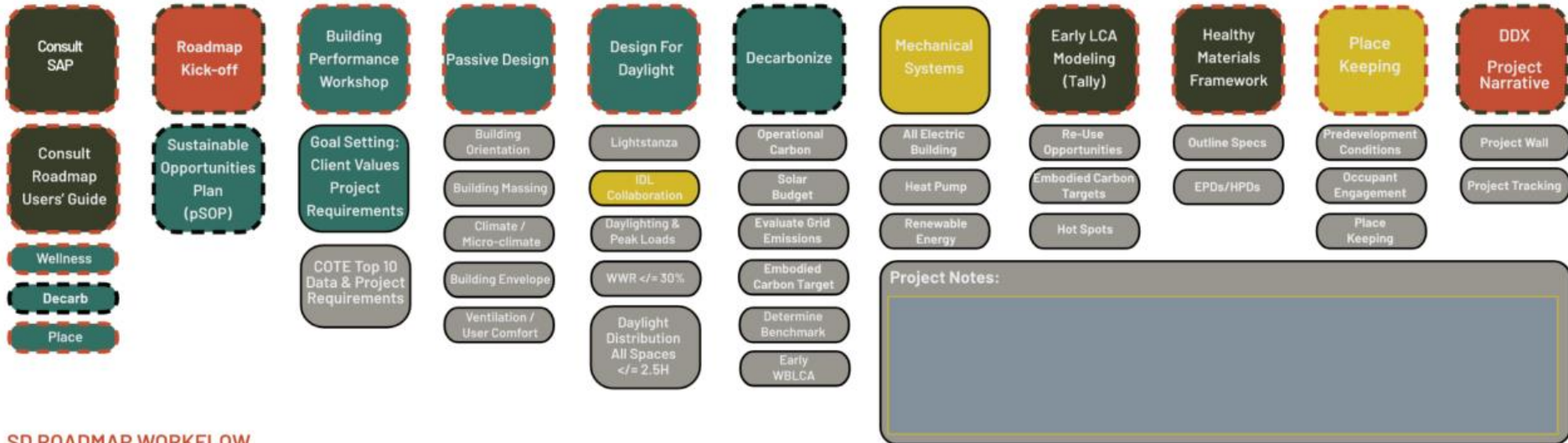
The Roadmap

MILEPOSTS

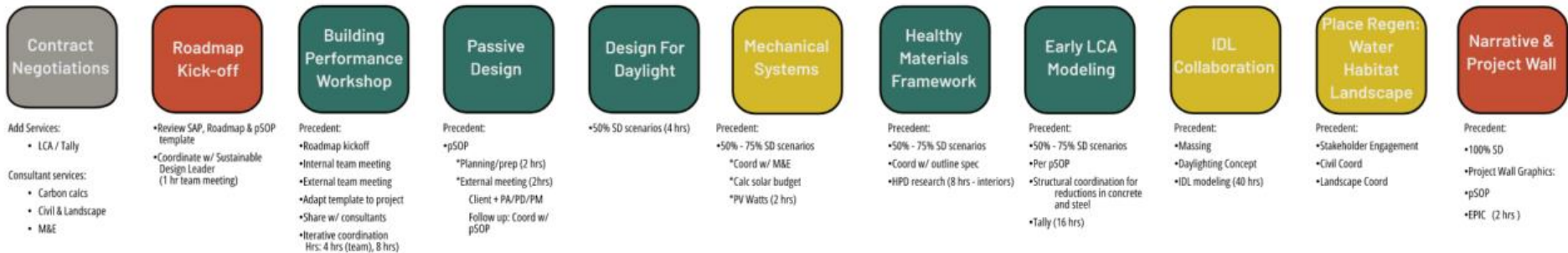
project name:



PREDESIGN / SCHEMATIC DESIGN



SD ROADMAP WORKFLOW



Elementary School

Process + Survey


Inclusive Playground

Administration + Main Entry



SURVEY RESULTS ARE IN!

47	Kindergarten
54	1st Grade
67	2nd Grade
49	3rd Grade
80	4th Grade
91	5th Grade
24	Teacher Staff
10	Other
422	Total Responses




Playground Survey

Help us design your NEW South Whidbey Elementary School inclusive playground!


Please complete the survey below by Sunday, March 3rd.

* Indicates required question

What are your top three favorite activities on your current playground? *



 Slides



 Monkey Bars

SURVEY RESULTS ARE IN!

What are your top three favorite activities on your current playground?

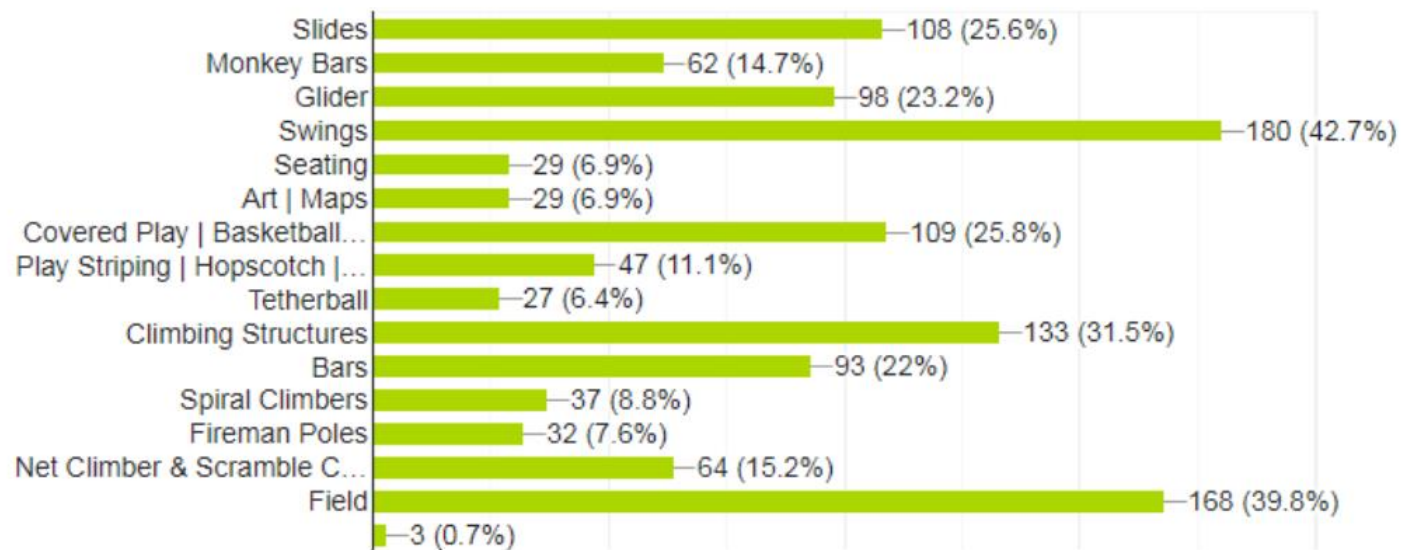
1 Swings



2 Field



3 Climbing Structures



SURVEY RESULTS ARE IN!

What are your top three favorite activities on your current playground?

- Other:**
- The brick place that is next to the white building
 - Football (3)
 - Volleyball (2)
 - Running around
 - Sitting under cover (4)
 - Other basketball court on the other end of the playground



SURVEY RESULTS ARE IN!

What NEW pieces of play equipment would you like to see? Select your top three!

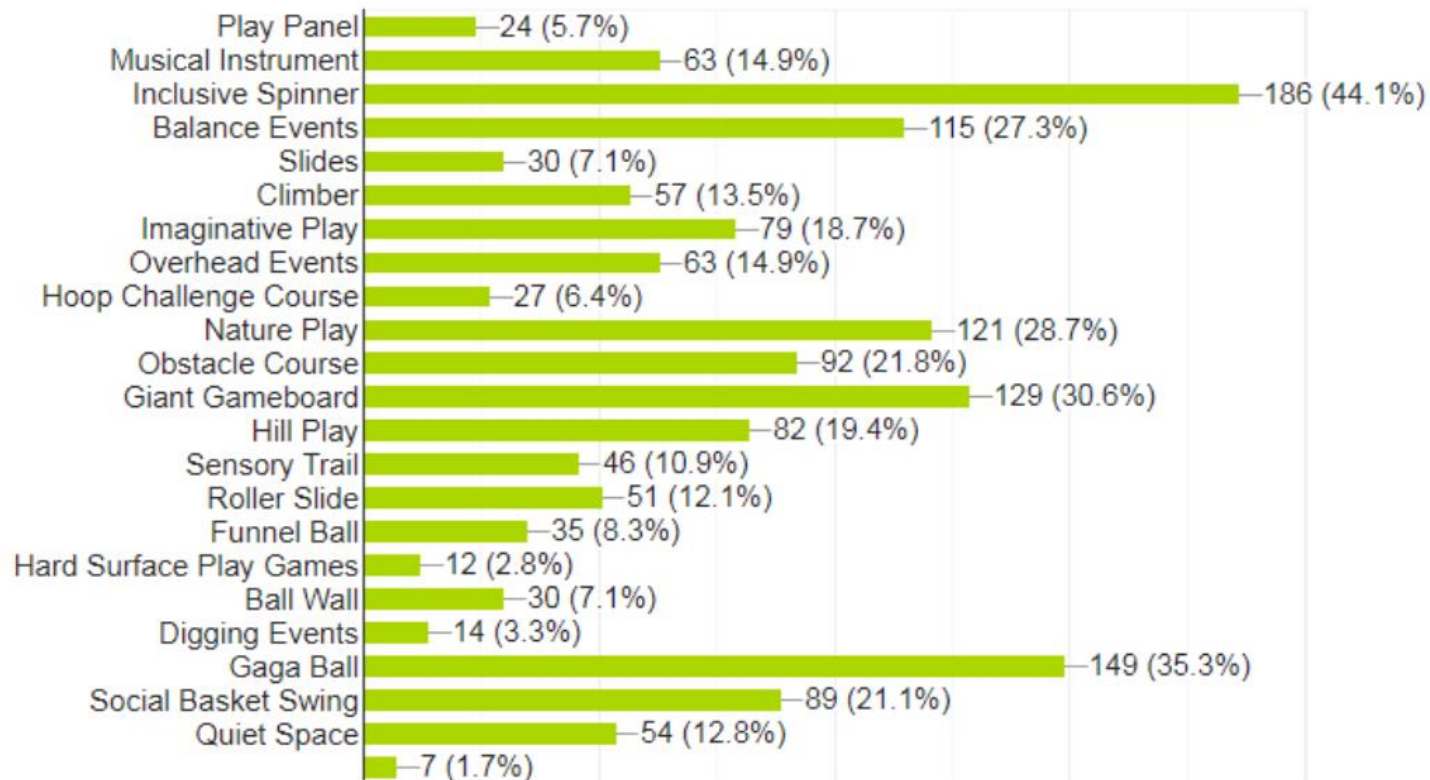
1 Inclusive Spinner



2 Gaga Ball



3 Giant Gameboard



SURVEY RESULTS ARE IN!

What NEW pieces of play equipment would you like to see? Select your top three!

- Other:**
- A big tunnel (2)
 - New gymnastics bars & mats (2)
 - Football field (4)
 - Climbing wall
 - Purple dinosaur
 - Volleyball court
 - Baseball diamond
 - Video games
 - More swings
 - Tire swing
 - Bench
 - Zipline (2)
 - Other (1)



Site Plan

INCLUSIVE PLAYGROUND



Play Structures



INCLUSIVE PLAYGROUND

Play Structures



INCLUSIVE PLAYGROUND

Play Structures

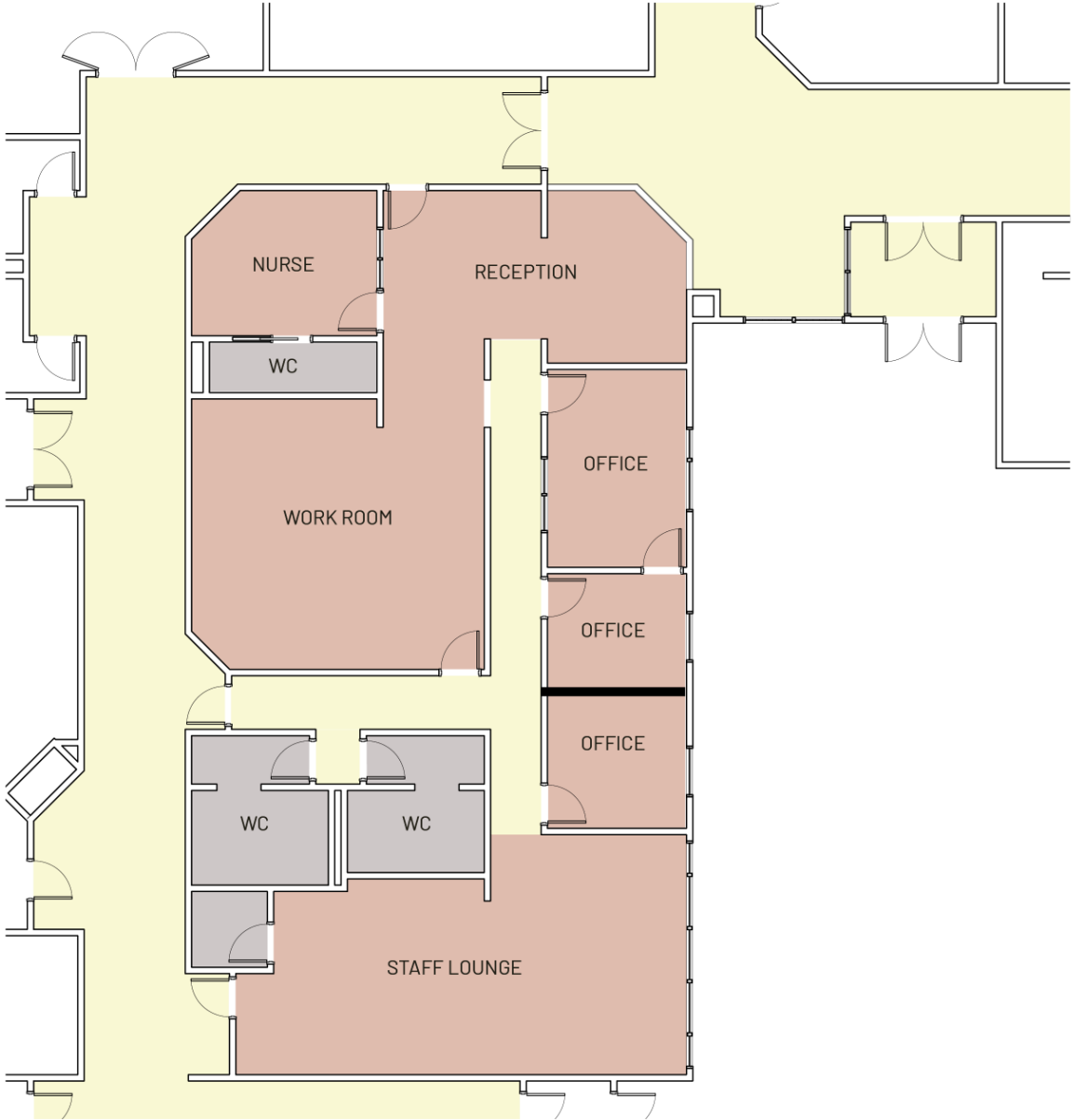


INCLUSIVE PLAYGROUND

https://youtu.be/YQhYB_wxqi8

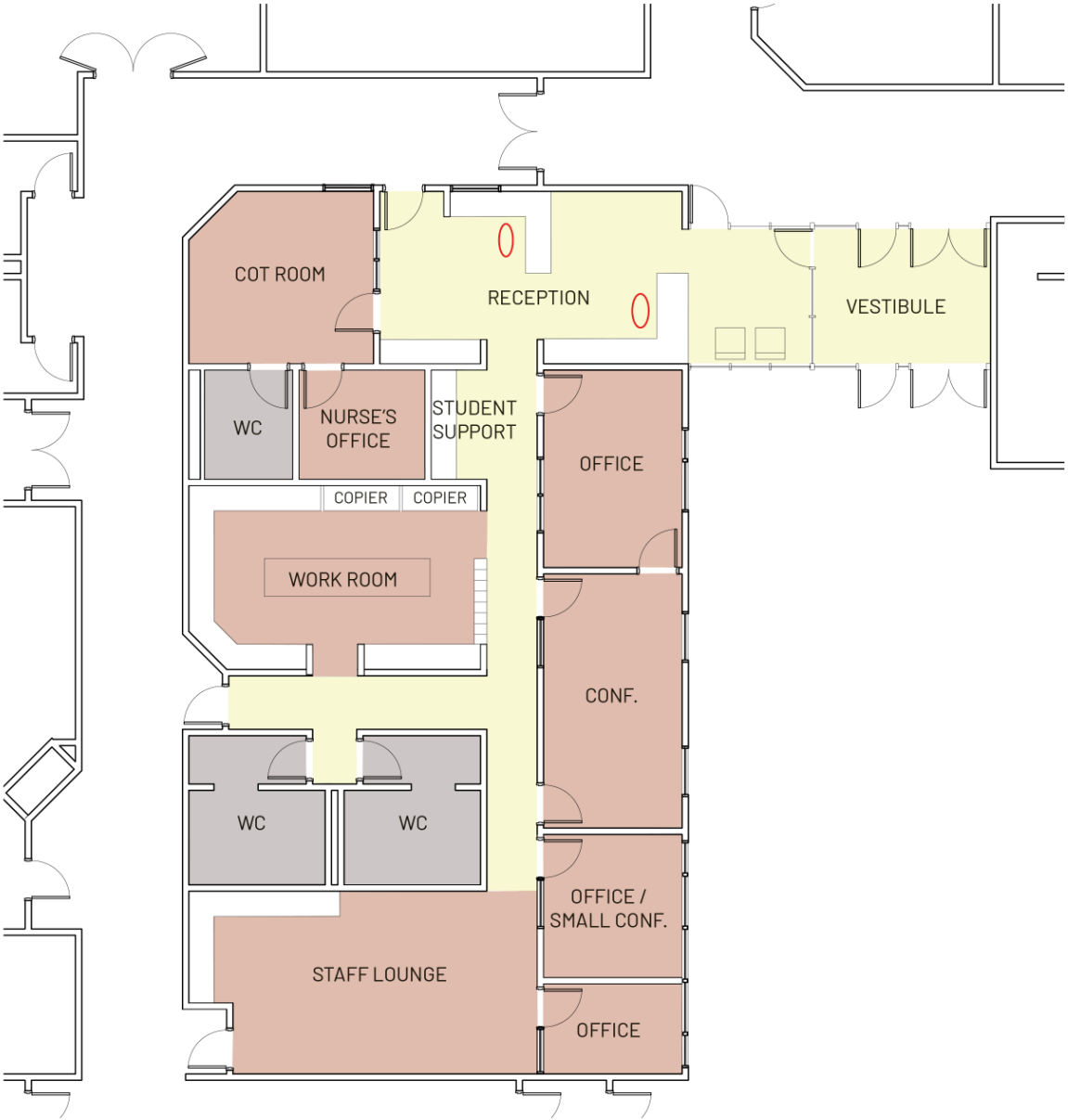
EXISTING PLAN

ADMINISTRATION + MAIN ENTRY



PROPOSED PLAN

ADMINISTRATION + MAIN ENTRY



Middle & High School

Administration + Entries

Middle School Stair

Stadium and Fields





FIRST FLOOR PLAN

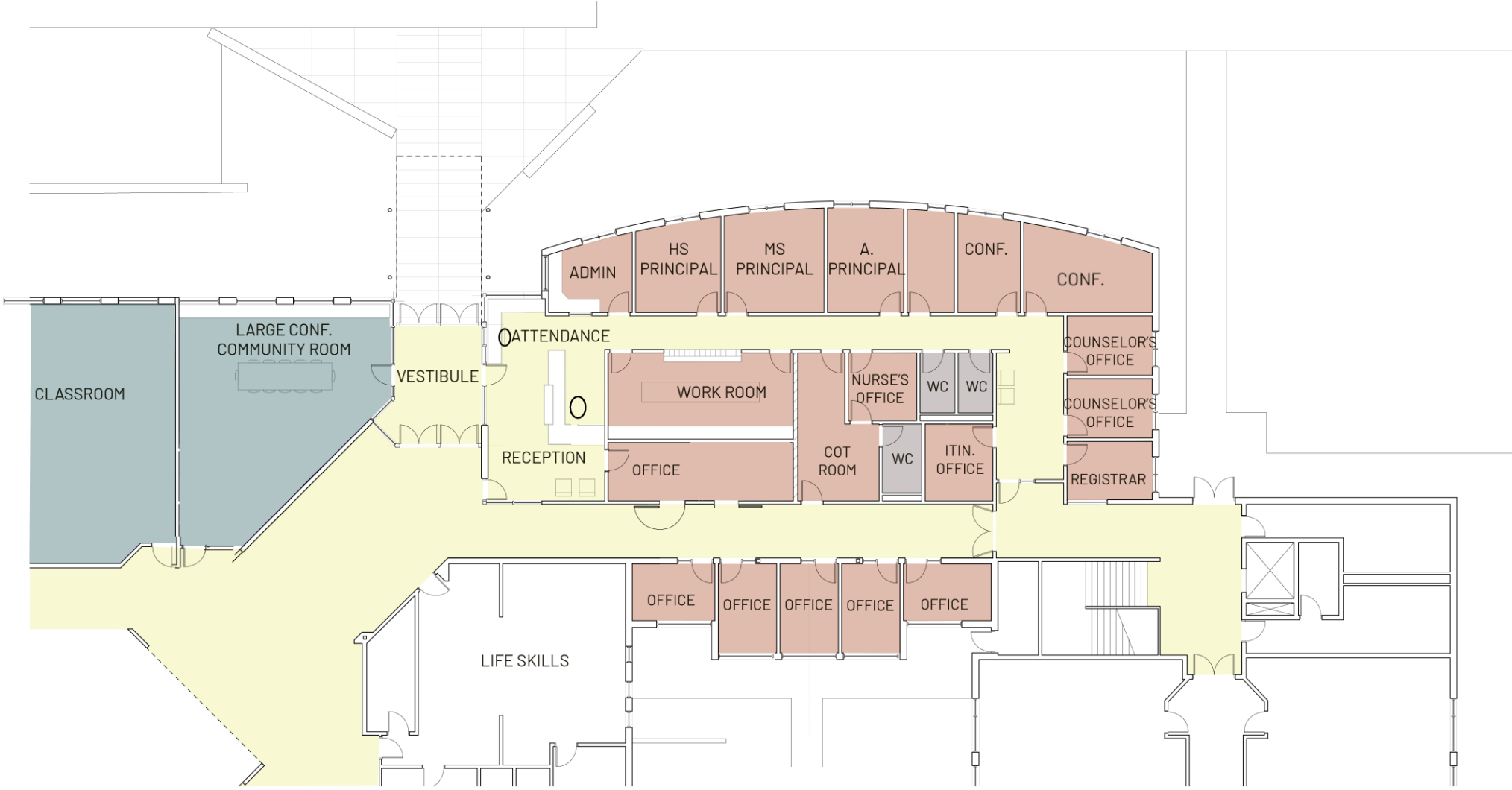


EXISTING PLAN

ADMINISTRATION AND ENTRIES



PROPOSED FLOOR PLAN



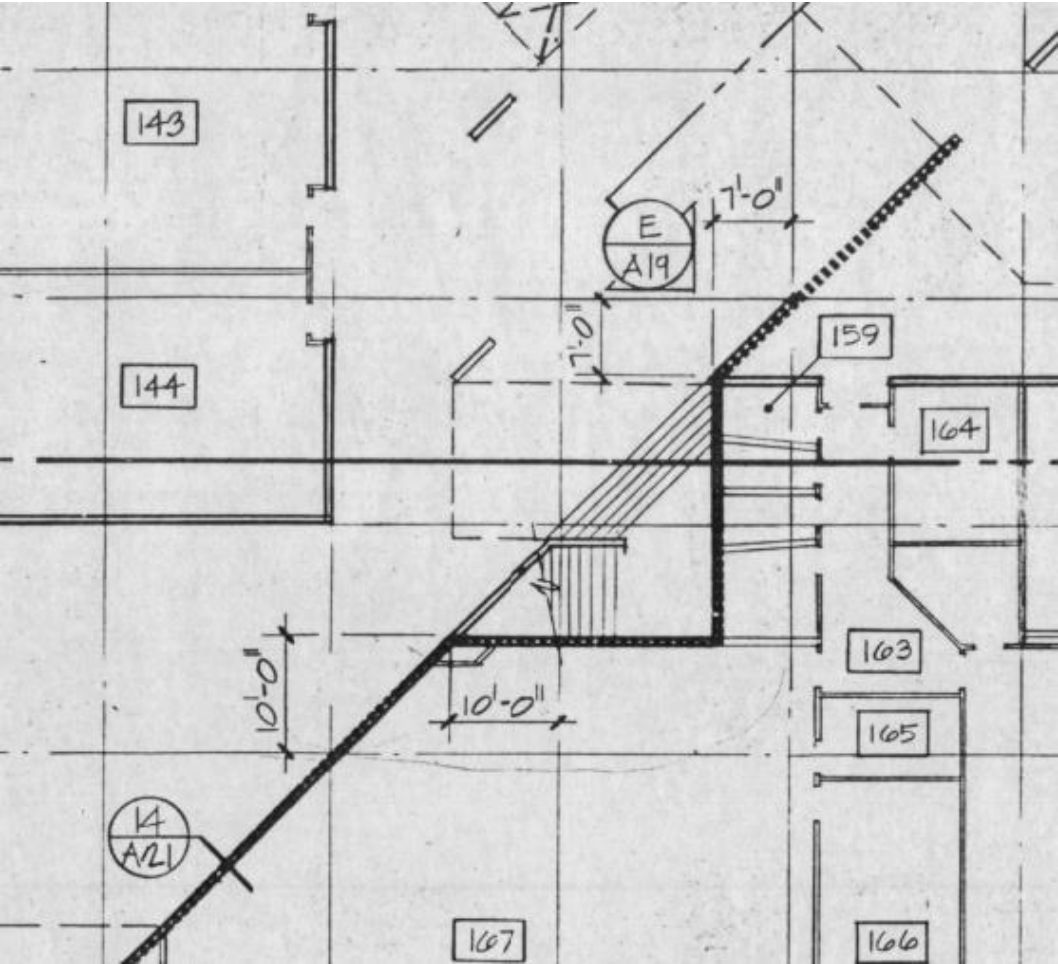
ADMINISTRATION AND ENTRIES

EXISTING STAIR

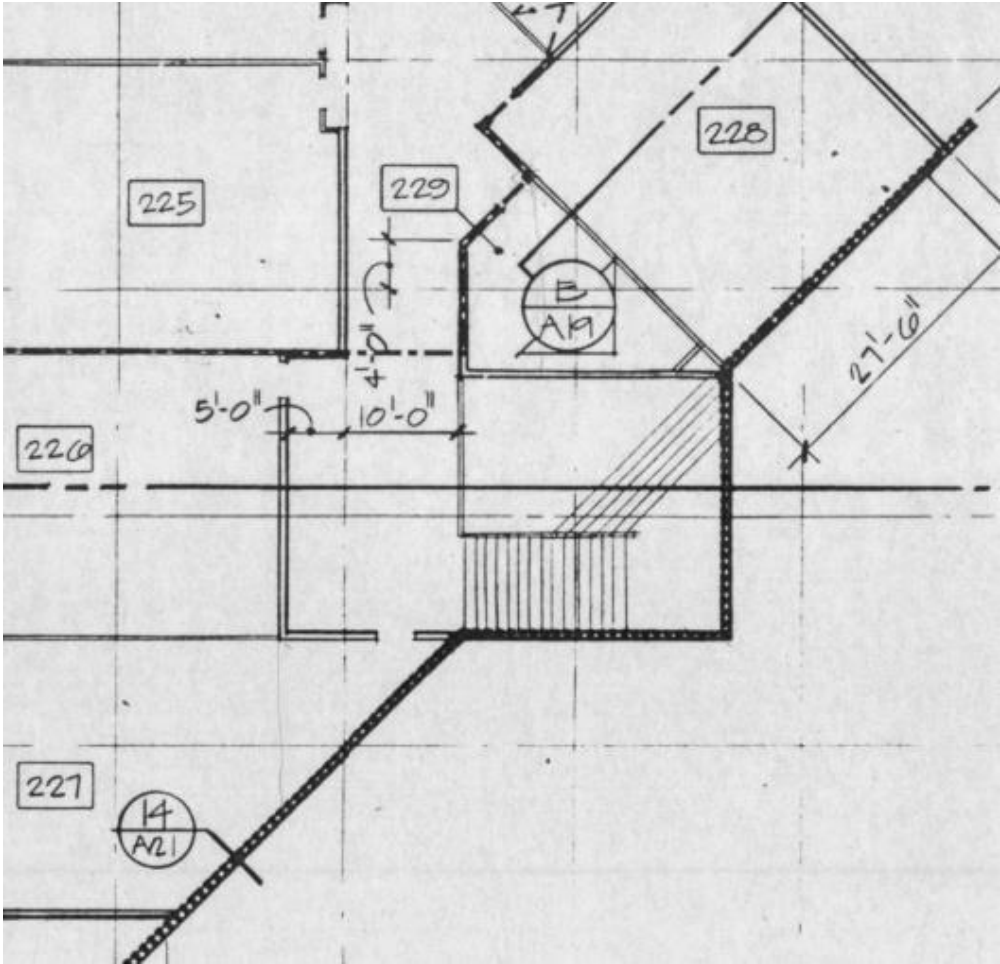
MIDDLE SCHOOL STAIR



EXISTING STAIR PLAN

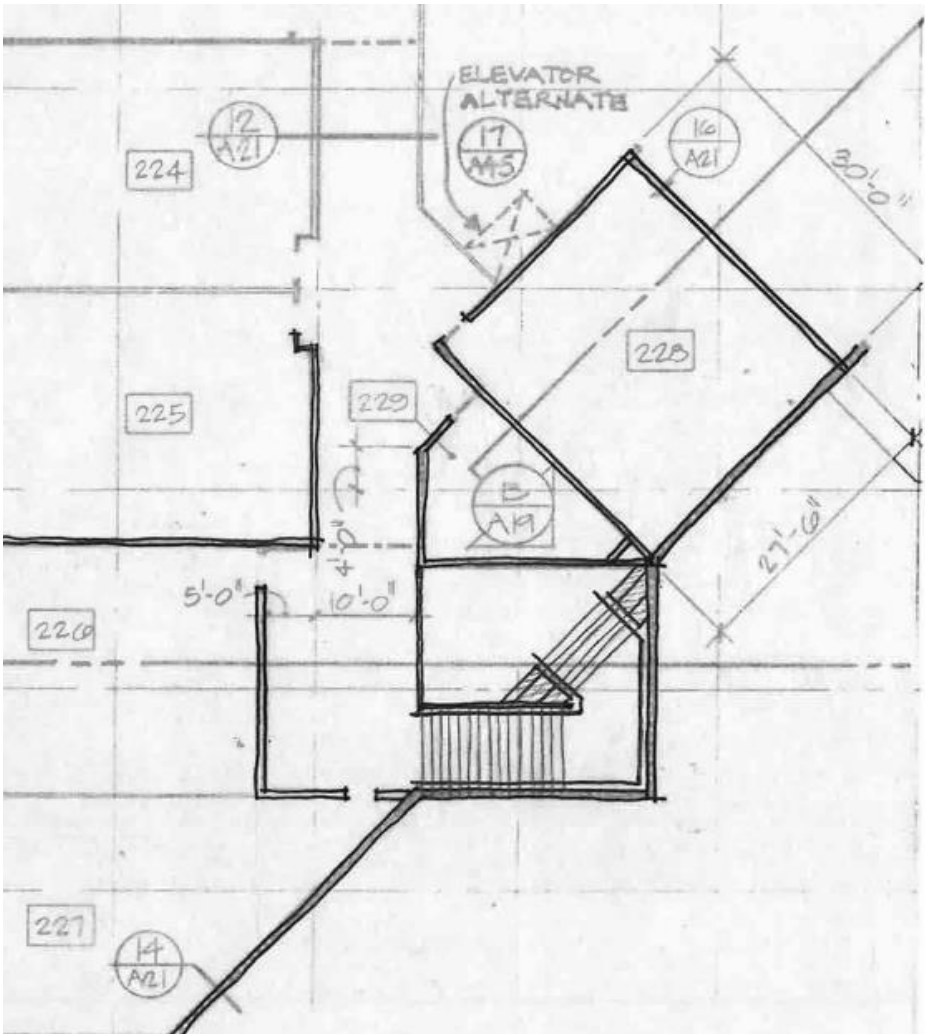


LEVEL 1



LEVEL 2

OPTION A



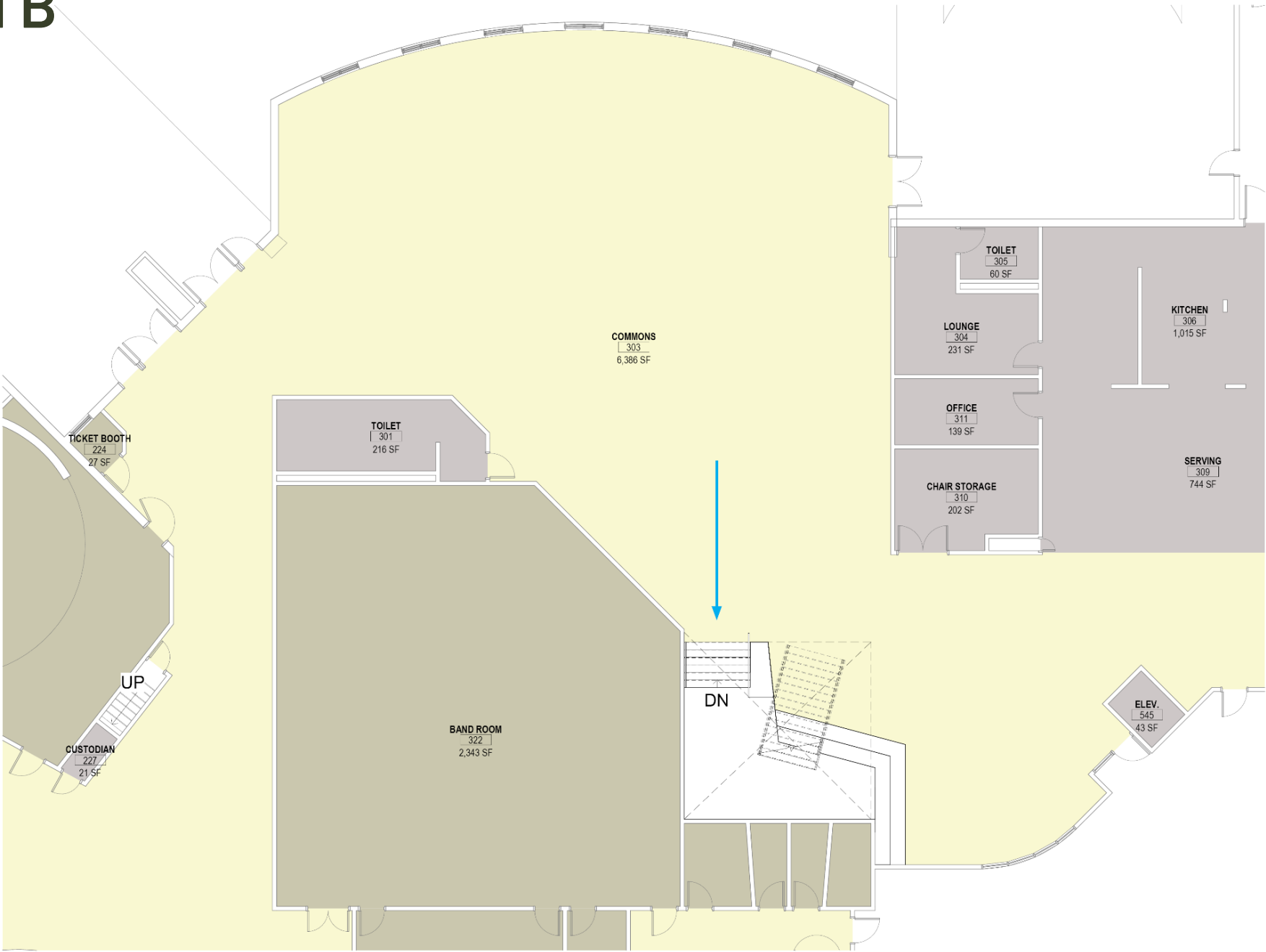
LEVEL 2



MIDDLE SCHOOL STAIR

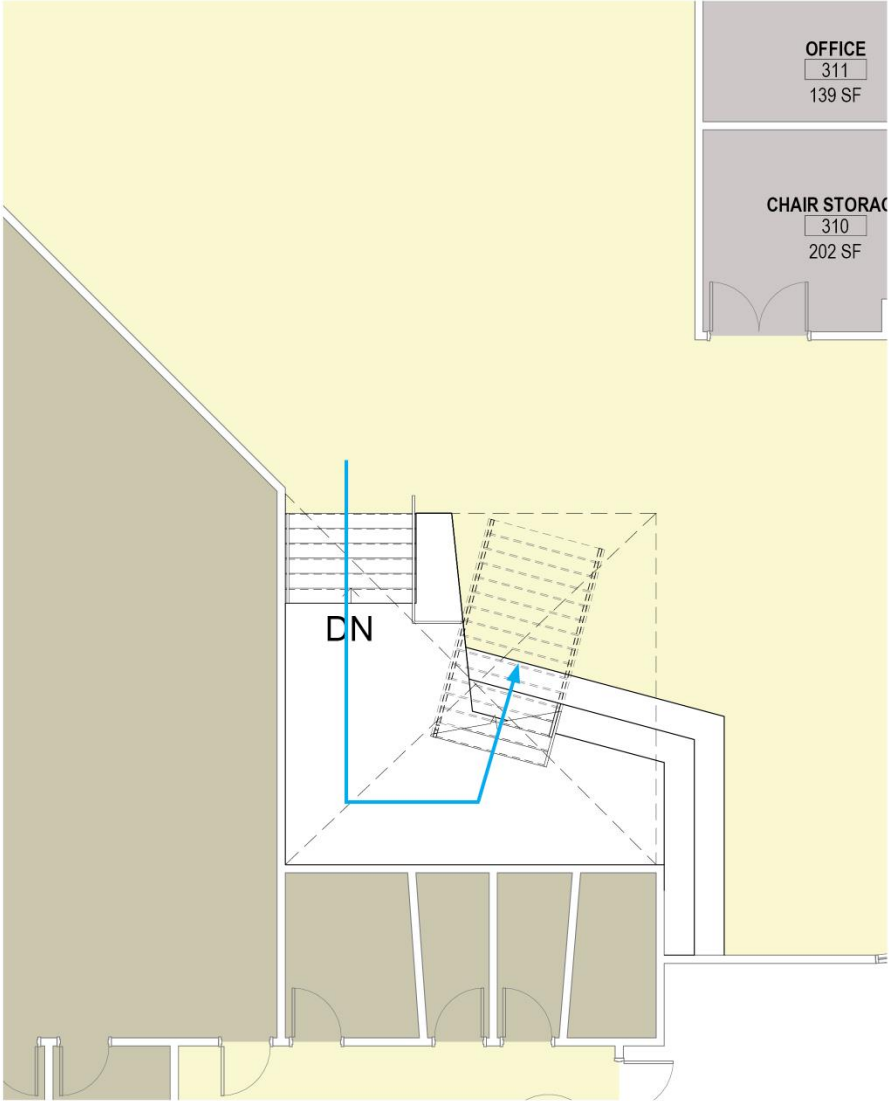
EXIST

OPTION B



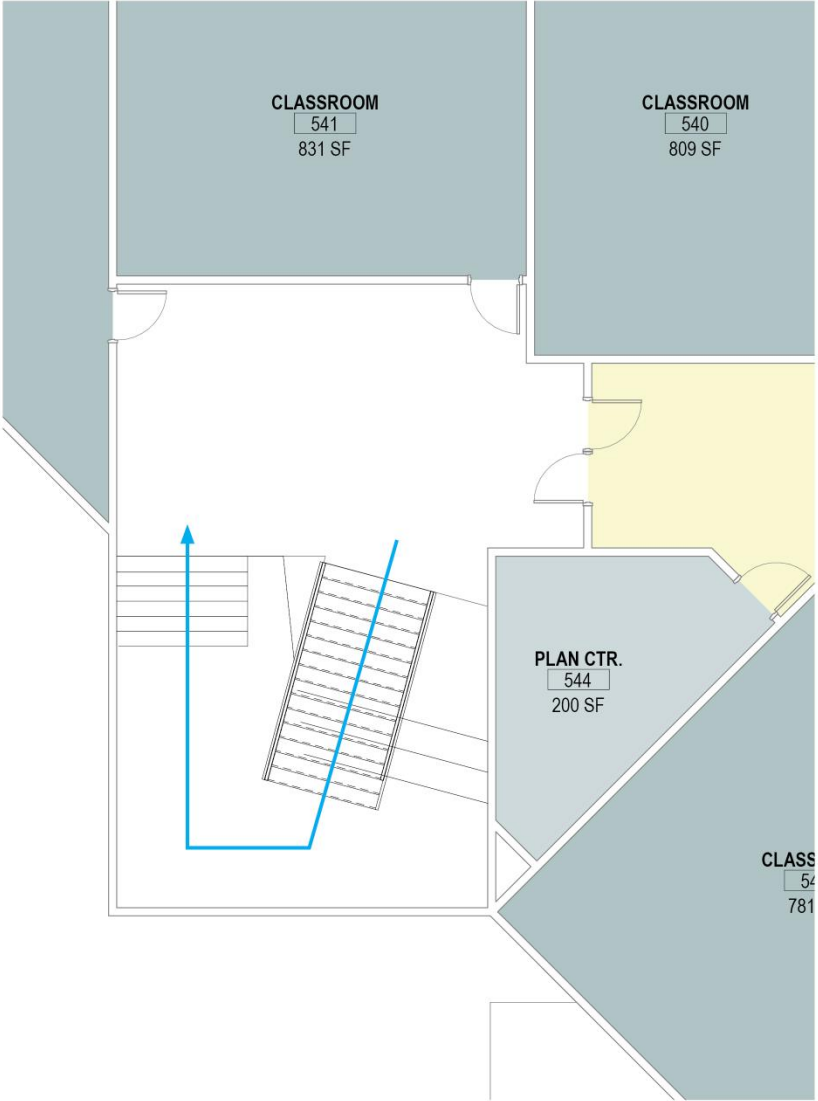
OPTION B

Middle School Stair



Lower Level

1/8" = 1'-0"



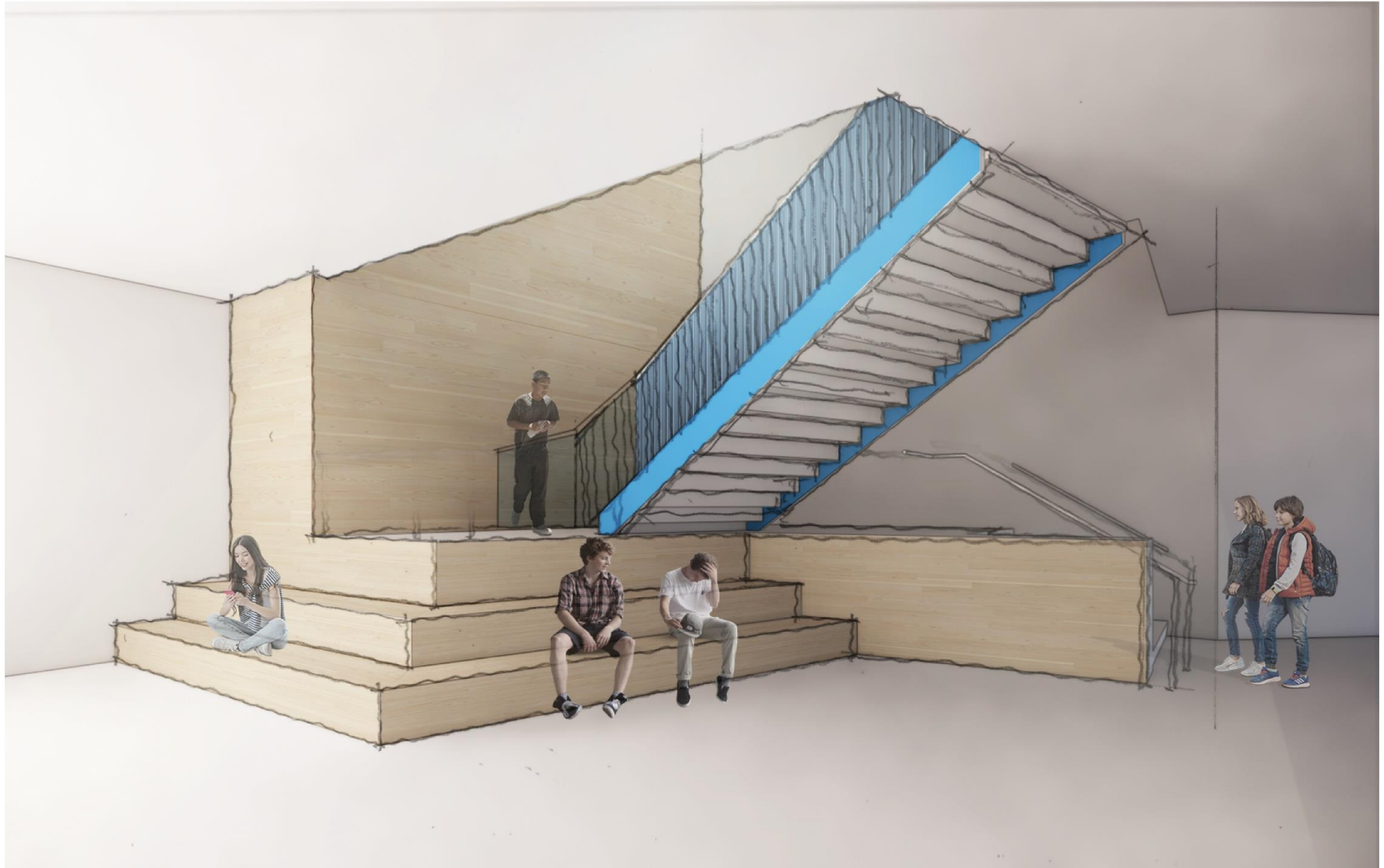
Upper Level

1/8" = 1'-0"

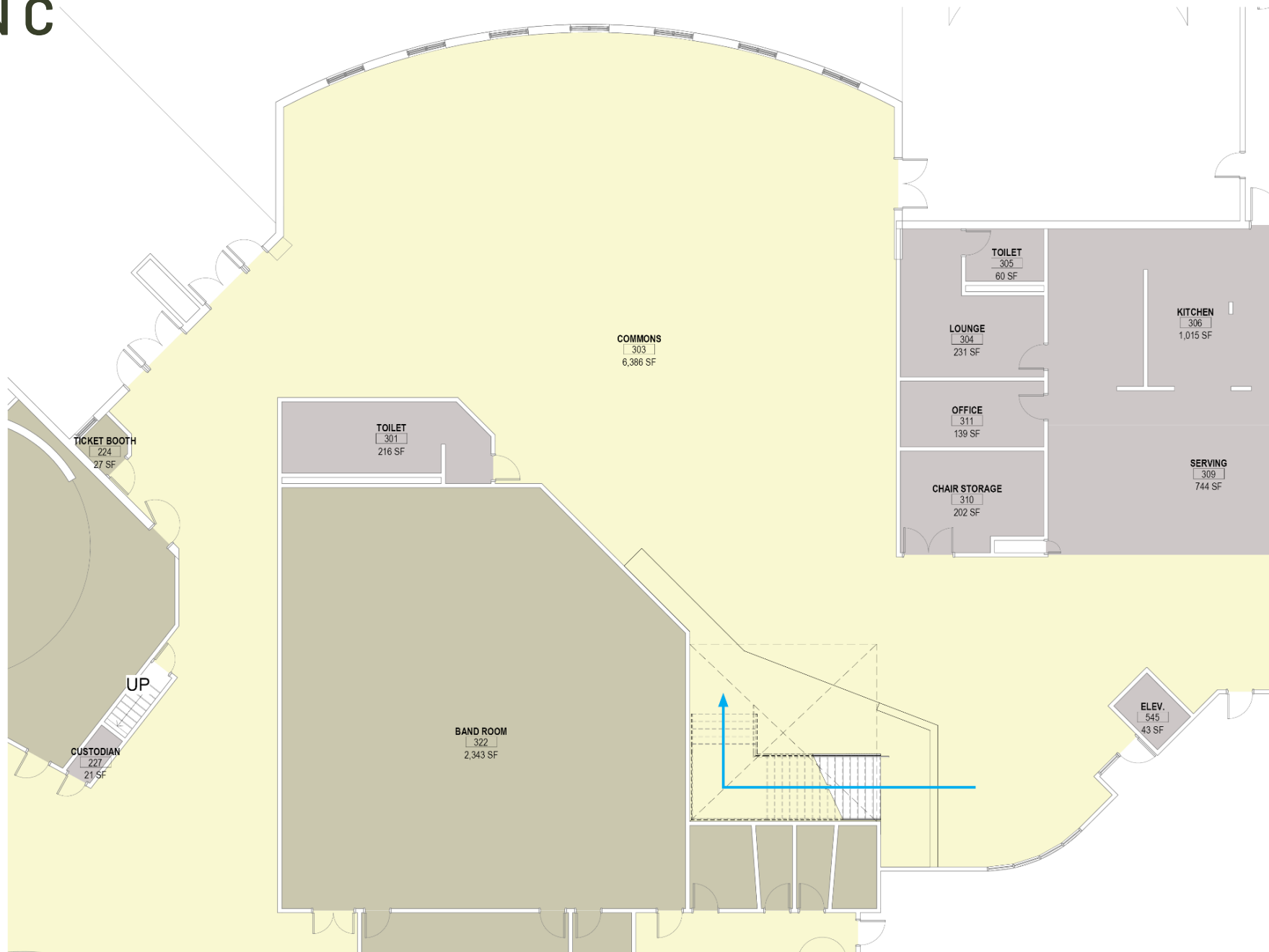
OPTION B - Switchback



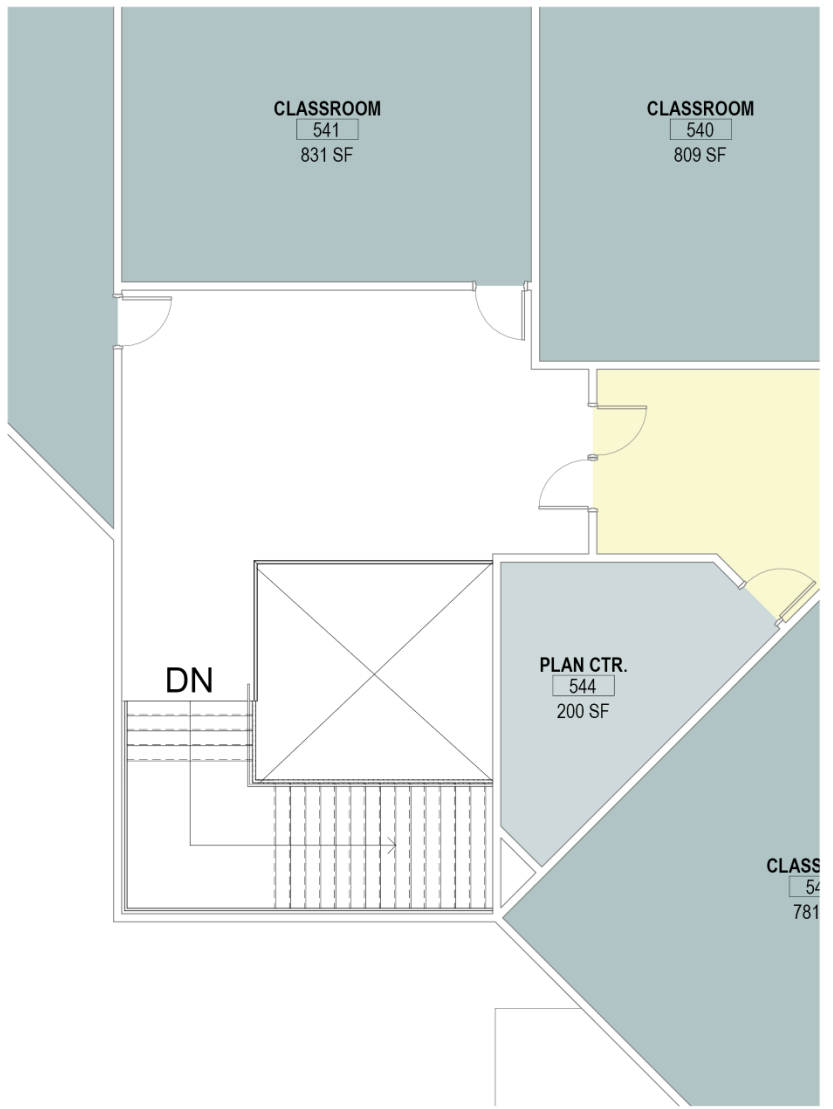
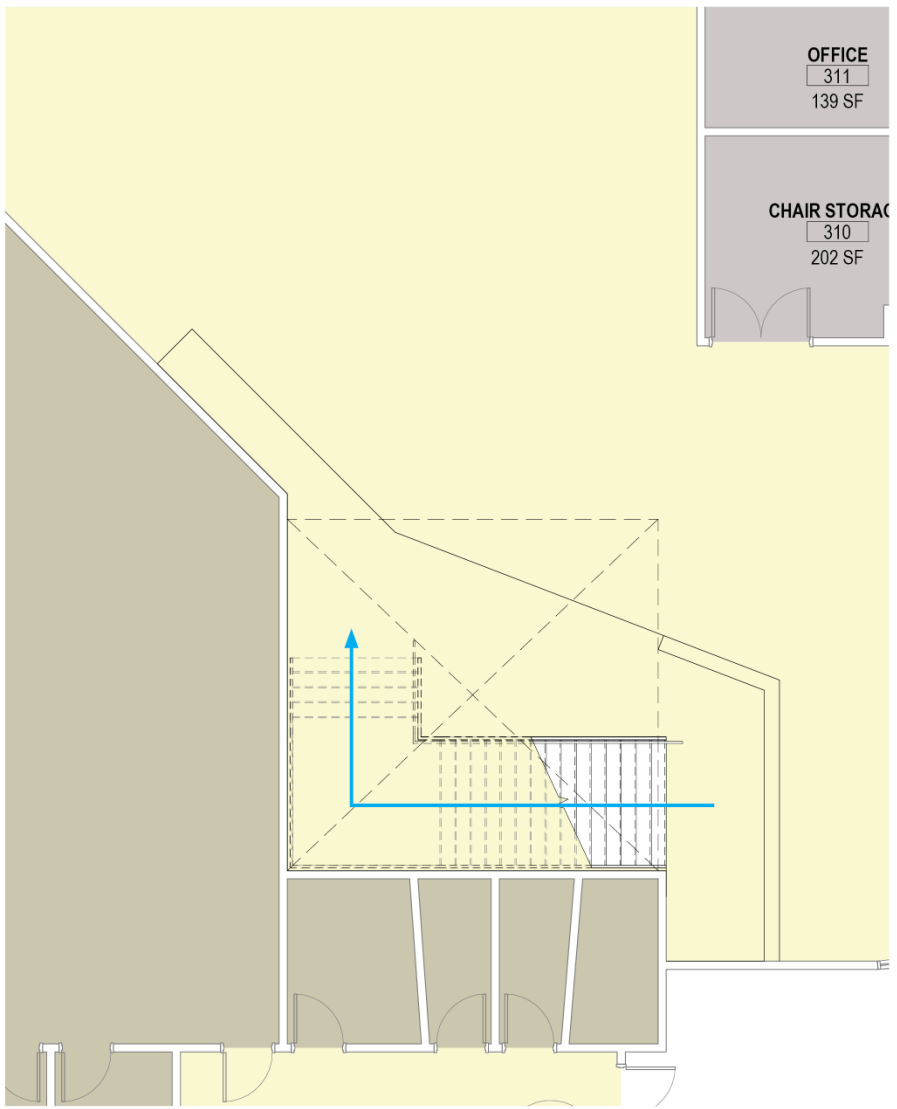
OPTION B - Switchback



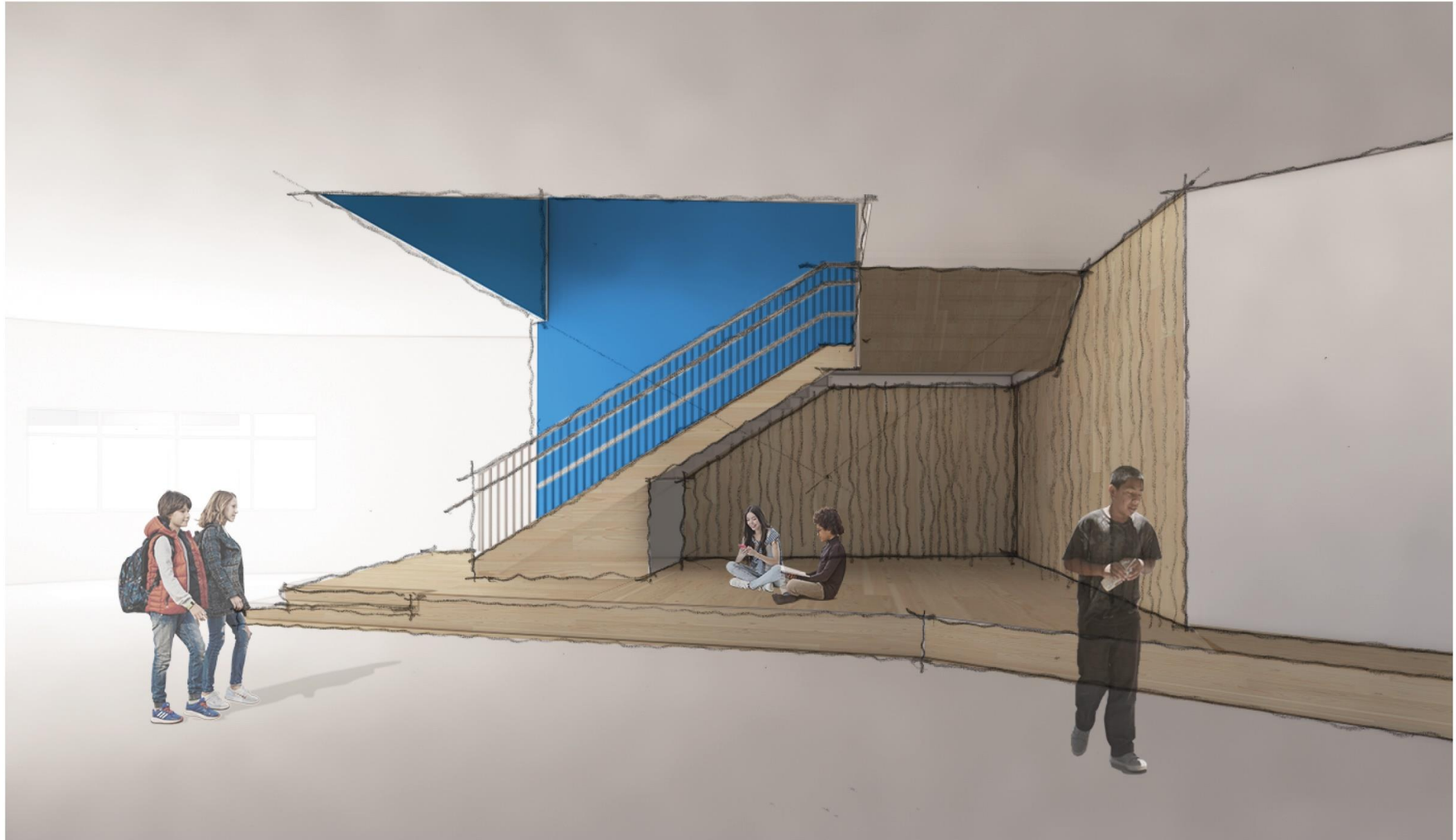
OPTION C



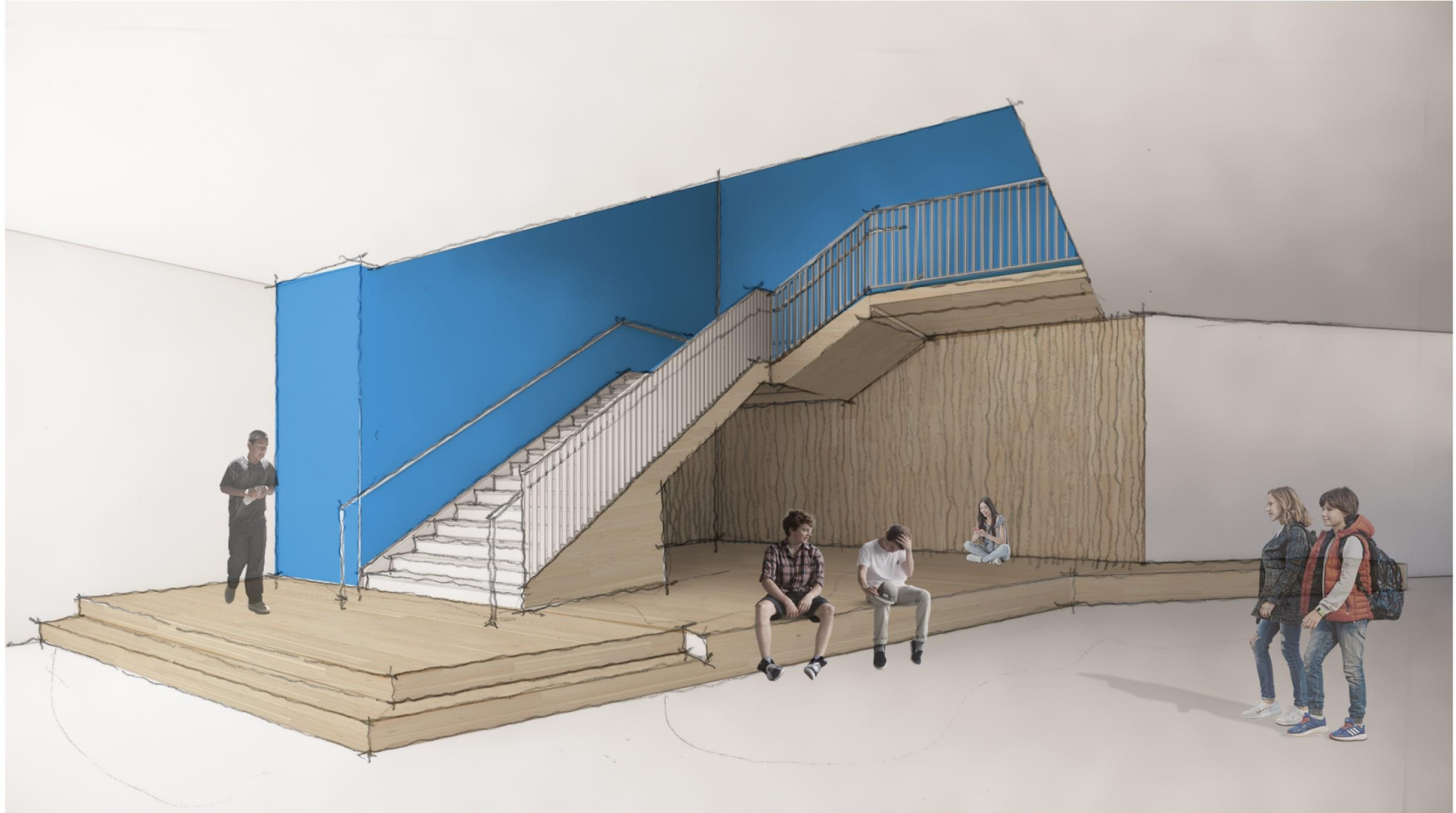
OPTION C



OPTION C - 90 Degree



OPTION C - 90 Degree



EXISTING ATHLETIC STADIUM



General Conditions

- Update entry points incl. ticket booths, gates
- Need better lighting at entries & grandstands
- Restroom updates for ADA & capacity
- Softball Fields improvements,
- ADA compliant access path
- Pavement updates

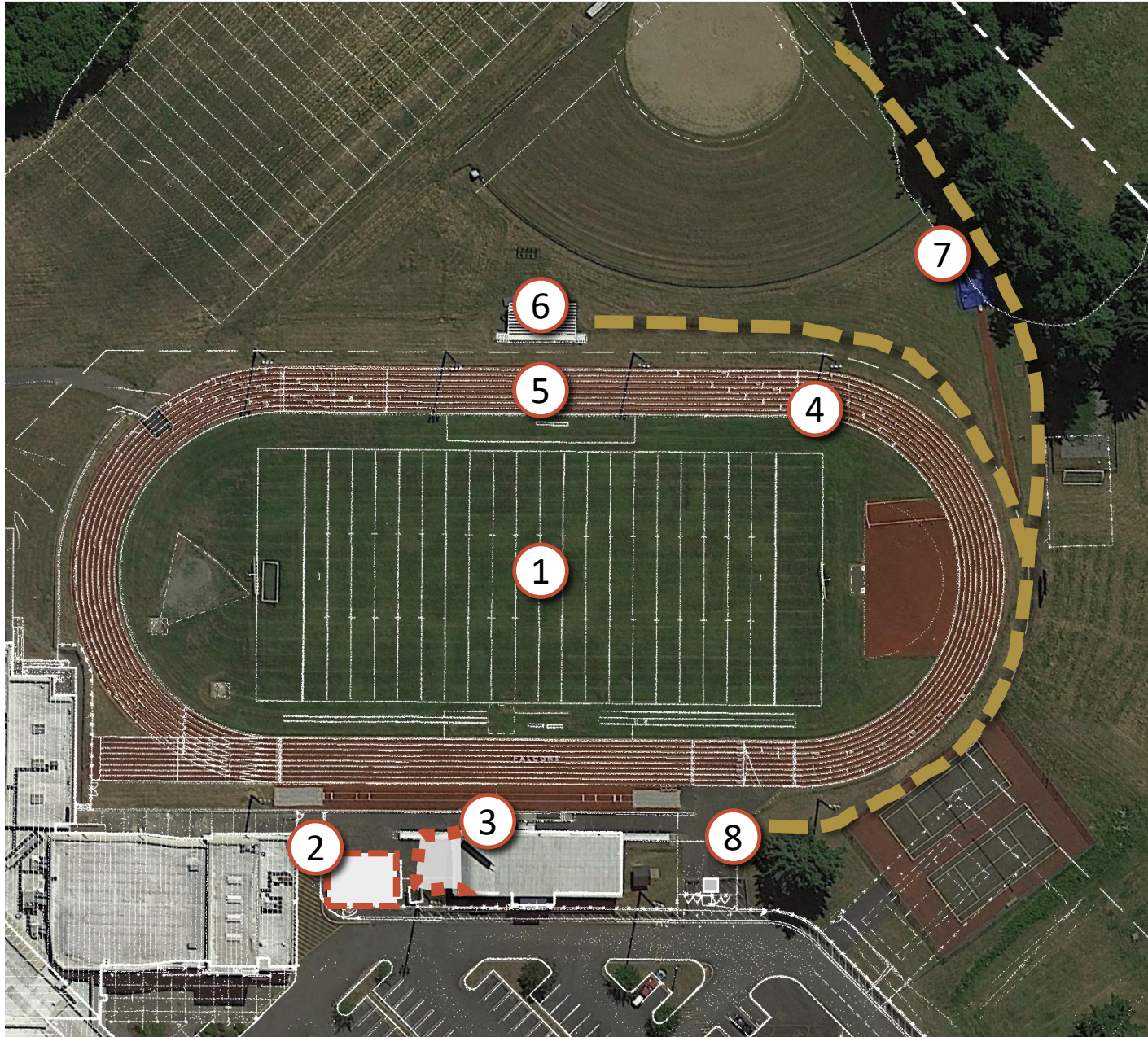
Grandstands

- Increase capacity
- Create additional storage under
- Press box improvements

Track and Field

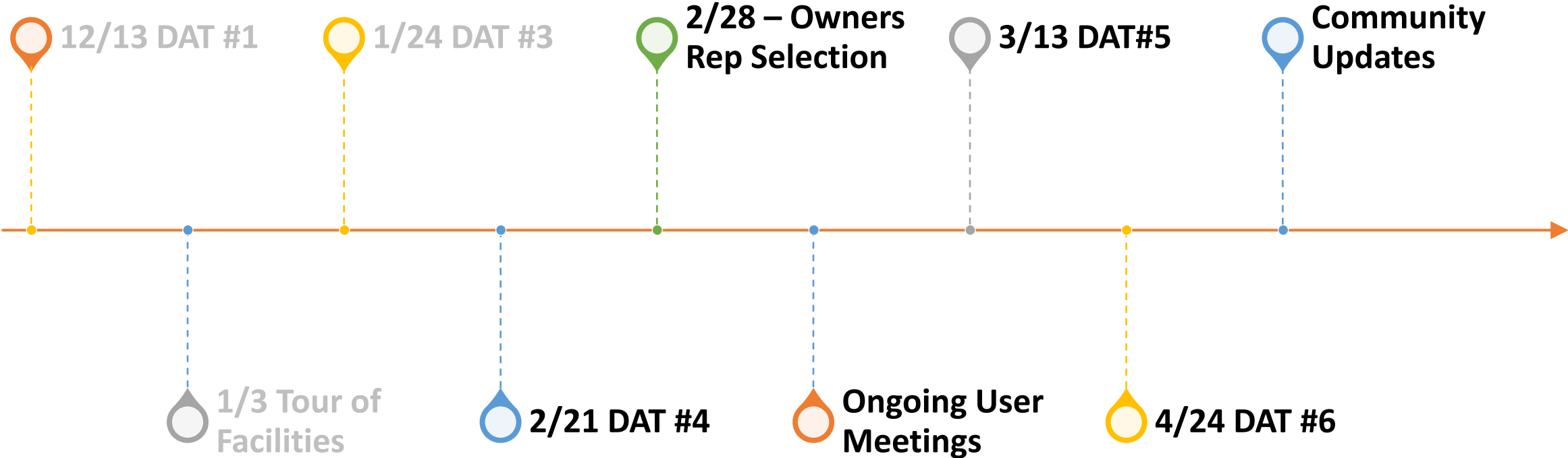
- New field surfacing
- Infrastructure for track meets (electrical)
- Update field lights

PROPOSED IMPROVEMENTS



- ① New field surfacing
- ② Update/Replace restrooms
- ③ Grandstand expansion and press box improvements
- ④ Update field lighting and add electrical for track meets
- ⑤ Repair/replace track surface
- ⑥ Create storage under visitor seating
- ⑦ Paved pathways to softball field and visitor seating
- ⑧ General improvements:
 - Lighting upgrades
 - Pavement repair/replace
 - Ticket booth updates

SCHEDULE



NEXT STEPS



Future Topics

- Wayfinding & graphics
- Interior design
- Exterior Materials

Upcoming User Meetings

- Security
- Maintenance & Operations



- Please share any items that you would like to discuss further.

THANK YOU!



INTEGRUS

A COLLABORATION OF YGH & INTEGRUS ARCHITECTURE