



SUBMITTAL

Project

Lawndale District Office Data Center

Date

Wednesday, March 6, 2024

Table Of Contents

Project: Lawndale District Office Data Center
Prepared By:

03/08/2024
10:54AM

5 Ton HP 208-230-1	3
Unit Report.....	4
Certified Drawing.....	5
Performance Summary.....	6

5 Ton HP 208-230-1

Project: Lawndale District Office Data Center
Prepared By:

03/08/2024
10:54AM

5 Ton HP 208-230-1

**Tag Cover Sheet
Unit Report
Certified Drawing
Performance Report**

Unit Report For 5 Ton HP 208-230-1

Project: Lawndale District Office Data Center
Prepared By:

03/08/2024
10:54AM

Unit Parameters

Unit Model:.....50VT-K60---3
Unit Size:.....60 (5 Tons)
Volts-Phase-Hertz:.....208-1-60
Heating Type:.....Heat Pump
Duct Cfg:.....Horizontal/Horizontal

Dimensions (ft. in.) & Weight (lb.) ***

Unit Length:.....4' 0.25"
Unit Width:.....3' 8.1875"
Unit Height:.....4' 0.75"

*** Weights and Dimensions are approximate. Weight does not include roof curbs, unit packaging, field installed accessories or factory installed options. Approximate dimensions are provided primarily for shipping purposes. For exact dimensions and weights, refer to appropriate product data catalog.

Base Unit Weight (Does not include any accessories):
496.....lb

Warranty Information

1 year warranty on parts
5 year warranty on compressor

No optional warranties were selected.

NOTE: Please see Warranty Catalog 500-089 for explanation of policies and ordering methods.

Ordering Information

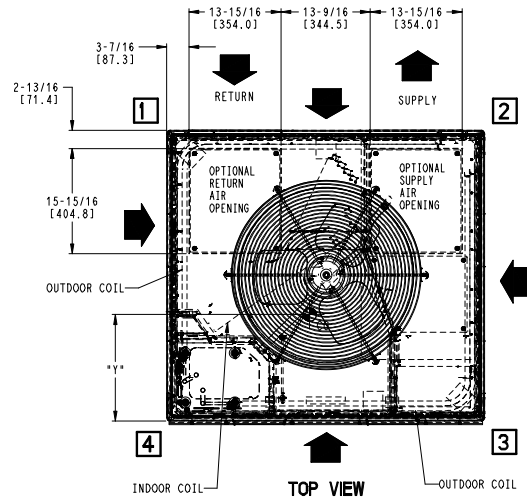
Part Number	Description	Quantity
50VT-K60---3	Rooftop Unit	1

Certified Drawing for 5 Ton HP 208-230-1

Project: Lawndale District Office Data Center
Prepared By:

03/08/2024
10:54AM

CARRIER / BRYANT HP (LARGE CHASSIS)



COOLING CAPACITY	UNIT WT.		UNIT HEIGHT IN/MM		CENTER OF GRAVITY IN/MM					
	LB	KG	"A"	"A"	X	Y	Z	X	Y	Z
36	406	184.2	54-3/4	1391	20-1/2	521	17-1/2	445	17-3/8	441
42	426	193.3	54-3/4	1391	20-1/2	521	17-1/2	445	17-3/8	448
48	426	193.3	44-3/4	1137	20-1/2	521	17-1/2	445	17-3/8	448
60	496	225.0	48-3/4	1238	20-1/2	521	17-1/2	445	18	451

UNIT	CORNER WEIGHT LB/KG			
	"1"	"2"	"3"	"4"
36	88.6	40.2	78.4	35.6
42	92.9	42.2	82.4	37.4
48	92.6	42.0	82.5	37.4
60	107.5	48.8	95.5	43.3

REQUIRED CLEARANCES TO COMBUSTIBLE MATL.

	INCHES	MM
TOP OF UNIT.....	14	[355.6]
DUCT SIDE OF UNIT.....	2	[50.8]
SIDE OPPOSITE DUCTS.....	14	[355.6]
BOTTOM OF UNIT.....	0	[0.0]
ELECTRICAL PANEL.....	36	[914.4]

NEC REQUIRED CLEARANCES:

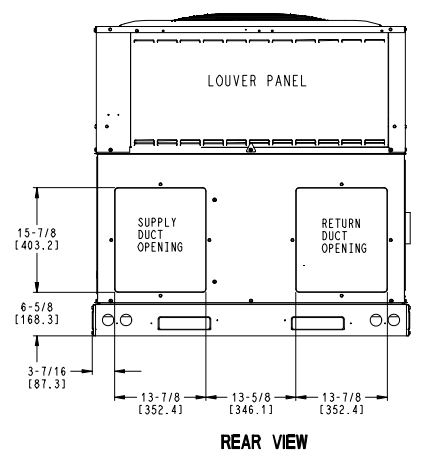
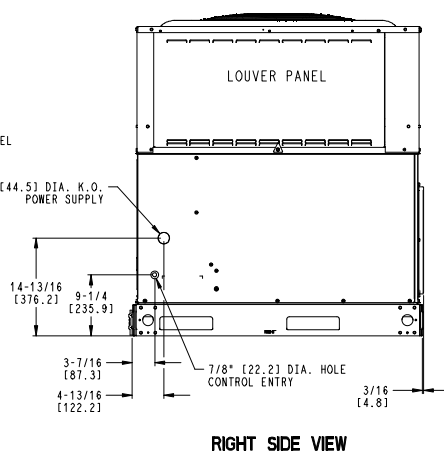
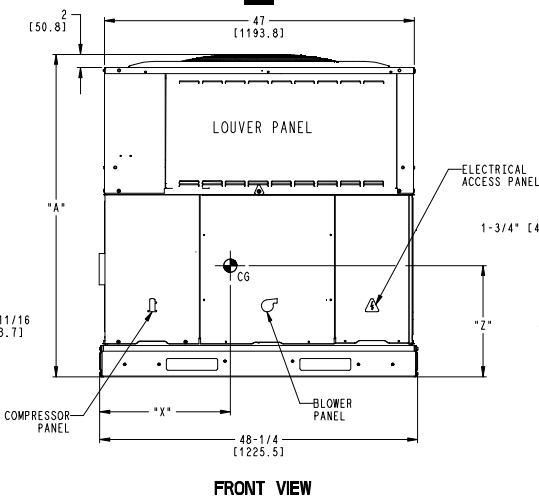
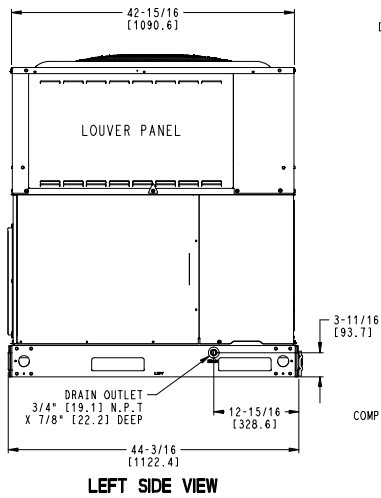
	INCHES	MM
BETWEEN UNITS, POWER ENTRY SIDE.....	42	[1066.8]
UNIT AND UNGROUNDED SURFACES, POWER ENTRY SIDE.....	36	[914.0]
UNIT AND BLOCK OR CONCRETE WALLS AND OTHER GROUNDED SURFACES, POWER ENTRY SIDE.....	42	[1066.8]

REQUIRED CLEARANCE FOR OPERATION AND SERVICING

	INCHES	MM
EVAP. COIL ACCESS SIDE.....	36	[914.0]
POWER ENTRY SIDE.....	42	[1066.8]
(EXCEPT FOR NEC REQUIREMENTS)		
UNIT TOP.....	48	[1219.2]
SIDE OPPOSITE DUCTS.....	36	[914.0]
DUCT PANEL.....	12	[304.8]

*MINIMUM DISTANCES-IF UNIT IS PLACED LESS THAN 12 [304.8] FROM WALL SYSTEM, THEN SYSTEM PERFORMANCE MAYBE COMPROMISED.

DIMENSIONS IN [] ARE IN MILLIMETERS



10/19/22	UPDATED TABLE DIMS.	SINGLE ZONE ELECTRIC COOLING & HEAT(LG)	SD5770-4	A
----------	---------------------	---	----------	---

Performance Summary For 5 Ton HP 208-230-1

Project: Lawndale District Office Data Center
Prepared By:

03/08/2024
10:54AM

Part Number:50VT-K60---3

ARI SEER2:.....13.40

Base Unit Dimensions

Unit Length:.....48.3 in
Unit Width:.....44.2 in
Unit Height:.....48.8 in

Base Unit Weight (Does not include any accessories):.....496 lb

Unit

Unit Voltage-Phase-Hertz:.....208-1-60
Air Discharge:.....Horizontal
Fan Drive Type:.....Direct
Actual Airflow:.....1998 CFM
Site Altitude:.....0 ft

Cooling Performance

Condenser Entering Air DB:.....95.0 F
Evaporator Entering Air DB:.....80.0 F
Evaporator Entering Air WB:.....67.0 F
Entering Air Enthalpy:.....31.44 BTU/lb
Evaporator Leaving Air DB:.....59.5 F
Evaporator Leaving Air WB:.....58.0 F
Evaporator Leaving Air Enthalpy:.....25.01 BTU/lb
Net Cooling Capacity:.....57.81 MBH
Net Sensible Capacity:.....44.27 MBH
Total Unit Power Input:.....5.00 kW
Coil Bypass Factor:.....0.000

Heating Performance

Outdoor Ambient Temperature:.....47.0 F
Entering Air Indoor Coil DB:.....70.0 F
Leaving Air Indoor Coil DB:.....96.4 F
Total Heating Capacity:.....56.90 MBH
Integrated Heating Capacity:.....57.37 MBH
Heating Power Input:.....4.74 kW
High Temperature COP:.....3.50
Low Temperature COP:.....2.42
HSPF2:.....6.7

Supply Fan

External Static Pressure:.....0.38 in wg
Options / Accessories Static Pressure
Wet Coil:.....0.09 in wg
Application External Static (ESP + Unit Opts/Acc.):.....0.47 in wg
Fan Power:.....0.96 BHP
Fan Motor Size, hp:.....1
NOTE:.....High Motor Speed, Horz

Selection includes construction throwaway filter into the base fan curve. This filter is not MERV Rated.

Electrical Data

Minimum Voltage:.....197
Maximum Voltage:.....253
Compressor RLA:.....27.7
Compressor LRA:.....124.5
Outdoor Fan FLA (ea):.....1.1
Indoor Fan Motor FLA (Total):.....6.9
Power Supply MCA:.....42.6

Performance Summary For 5 Ton HP 208-230-1

Project: Lawndale District Office Data Center
 Prepared By:

03/08/2024
 10:54AM

Power Supply MOCP (Fuse or HACR):..... **60**

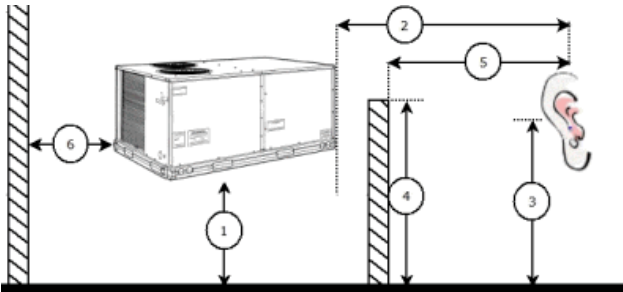
Control Panel SCCR: 5kA RMS at Rated Symmetrical Voltage

Acoustics

Sound Rating:..... **74.7 db**
 Sound Power Levels, db re 10E-12 Watts

	Discharge	Inlet	Outdoor
63 Hz	NA	NA	NA
125 Hz	NA	NA	60.0
250 Hz	NA	NA	61.6
500 Hz	NA	NA	63.8
1000 Hz	NA	NA	63.5
2000 Hz	NA	NA	62.0
4000 Hz	NA	NA	59.3
8000 Hz	NA	NA	50.3

Advanced Acoustics



Advanced Acoustics Parameters

- 1. Unit height above ground:..... **30.0** ft
- 2. Horizontal distance from unit to receiver:..... **50.0** ft
- 3. Receiver height above ground:..... **5.7** ft
- 4. Height of obstruction:..... **0.0** ft
- 5. Horizontal distance from obstruction to receiver:..... **0.0** ft
- 6. Horizontal distance from unit to obstruction:..... **0.0** ft

Detailed Acoustics Information

Octave Band Center Freq. Hz	63	125	250	500	1k	2k	4k	8k	Overall
A	0.0	60.0	61.6	63.8	63.5	62.0	59.3	50.3	69.8 Lw
B	- 26.2	43.9	53.0	60.6	63.5	63.2	60.3	49.2	68.4 LwA
C	0.0	27.6	29.2	31.4	31.1	29.6	26.9	17.9	37.4 Lp
D	- 26.2	11.5	20.6	28.2	31.1	30.8	27.9	16.8	36.0 LpA

Legend

- A Sound Power Levels at Unit's Acoustic Center, Lw
- B A-Weighted Sound Power Levels at Unit's Acoustic Center, LwA
- C Sound Pressure Levels at Specific Distance from Unit, Lp
- D A-Weighted Sound Pressure Levels at Specific Distance from Unit, LpA

Performance Summary For 5 Ton HP 208-230-1

Project: Lawndale District Office Data Center
Prepared By:

03/08/2024
10:54AM

Calculation methods used in this program are patterned after the ASHRAE Guide; other ASHRAE Publications and the AHRI Acoustical Standards. While a very significant effort has been made to insure the technical accuracy of this program, it is assumed that the user is knowledgeable in the art of system sound estimation and is aware of the tolerances involved in real world acoustical estimation. This program makes certain assumptions as to the dominant sound sources and sound paths which may not always be appropriate to the real system being estimated. Because of this, no assurances can be offered that this software will always generate an accurate sound prediction from user supplied input data. If in doubt about the estimation of expected sound levels in a space, an Acoustical Engineer or a person with sound prediction expertise should be consulted.